

BBK ENGLISH CHINESE TRANSLATOR AM101™ User Guide

Please read this guide carefully before using this product!

BBK Electronics USA owns copyrights in a wide range of works of authorship, including software, web content, product packaging, product and training documentation, and marketing collateral. Other than as allowed by law, no part of this document or any other copyrighted material owned by BBK Electronics USA may be reproduced or transmitted in any form or by any means, electronic or mechanical, including photocopying, recording, or information storage or retrieval systems, for any purpose, without the express written permission of BBK Electronics USA.

The hardware, software and database described in this document are furnished under a license agreement or nondisclosure agreement. It is against the law to copy the software onto any medium except as specifically allowed in the license.

Information in this *User Guide* is believed to be correct at the time of printing, but is subject to change without notice. Contents of this guide are provided “as is.”

Except as required by law, no warranties of any kind, express or implied, including, but not limited to, implied warranties of merchantability and fitness for a particular purpose, are made in relation to accuracy, reliability, or contents of this guide.

Please backup your data in another location! Under no circumstances shall BBK Electronics USA be responsible for any loss of data or income or any special, incidental, and consequential or indirect damages howsoever caused.

Caution: Changes or modifications of the BBK ENGLISH CHINESE TRANSLATOR AM101™ will void all warranties, and the user's authorization to use this device.

Table of Contents

Welcome	06
Features	06
About this Guide	07
 Getting started	 08
What's Included	08
Installing the Batteries	08
Opening and Closing the Dictionary	09
Turning the Dictionary On and Off	09
Turning the Lights On and Off	10
Using Keys and Menus	10
Menu Buttons	11
Hot Buttons	11
Input Keys	11
Navigation Keys	11
Function Keys	11
About Menus and Dialogs	12
Getting Help	13
 Translator	 14
English to Chinese	14
Linking Chinese Characters	15
Chinese to English	15
Pin-Yin	15
Chinese Characters	16
Linking English Words	16
 Dictionary	 16
Open a Dictionary	17
Find English Entries	17

Create a Word Collection	18
Add Entries to a Word Collection.....	18
Move an Entry to Another Collection	18
Delete an Entry from a Collection	19
Find Chinese Entries.....	19
Vocabulary Dictionary.....	19

Study ----- 19

Chinese Restaurant Menu	20
Browse	20
Search	20
Telephone Chinese Conversation.....	20
Find Specific Lines of Conversations	21
Daily Chinese Conversation	21
Conversation Controls	22
English Phonics	22
Chinese Pin-Yin	22
Chinese Radicals	22

Travel Features ----- 22

China Information	23
MP3 Player/Recorder	23
MP3 Player	23
Transfer MP3 Files.....	23
Play MP3 Files	24
Set Play Order	25
Set Equalizer.....	25
Set Player Skin	25
Player Controls	25
Recorder.....	25
Playback existing recordings	25
Playback Controls	25
Record from Microphone.....	26

Recorder Controls	26
Games	26
Tools	26
Calendar	27
World Clock	27
Calculator	28
Scientific Calculator	28
Currency Conversion	29
Unit Conversion	29

System Settings -----29

Power Management	30
LCD Contrast	30
Key Tone	30
Volume setting	30
Interface Language	31
Simplified/Traditional Chinese	31
Auto-Sound	31
Battery Power	31
USB Disk	31

Troubleshooting-----32

Dictionary won't turn on.	32
LCD screen is dim or dark.	32
Menu is in Chinese	32
Pronunciation can't be heard or is too loud.	32
Pressing keys has no effect in the Chinese-English Dictionary	32
Dictionary turns itself off	32
MP3 does not play	32
AM101™ not visible in Windows Explorer when connected with a computer	33

AM101™ fails to connect with Windows® computer.....	33
"Please recover system with the disk."	33

Specifications -----	34
-----------------------------	----

Warranty -----	35
-----------------------	----

Welcome

Congratulations on purchasing your BBK AM101™ English Chinese Translator. Whether tourist, businessman, or student, the AM101™ is an indispensable tool for communicating in Chinese.

Features

The pocket-sized AM101™ includes a reference library of useful tools:

- Full English and Chinese sentence translation with pronunciation.
- English-Chinese and Chinese-English bi-directional dictionaries with pronunciation.
- Specialty Dictionaries for Business, Computers, both Western and Chinese Medicine, Law, and the Military.
- Chinese and English Idiom Dictionaries.
- Grouped Vocabularies of categorized words, including Chinese restaurant menu items.
- Categorized telephone and daily conversations.
- Supplemental word information includes examples and illustrations, related phrases, usage, and antonyms.
- Find entries across all dictionaries alphabetically, by category or context, or by full-text search using English, Pin-Yin, or Chinese characters.
- Both Pin-Yin and phonetic spelling of Chinese translations.
- Both English and Mandarin Chinese pronunciation.
- Bookmark frequently viewed entries.
- Retain most-recently viewed entries for quick reference and review.
- Change interface language to English, or Traditional or Simplified Chinese.
- Travel functions include an MP3 Player and Memo Recorder, Calendar, Triple-city World Clock, Basic and Scientific Calculators, Currency and Unit Converters, a collection of articles about China, its people and culture, and five Games
- Reference information about using Pin-Yin to represent Chinese characters, and using Chinese radicals to index Chinese words.

About this Guide

Read *Getting Started* for general information about how to use your AM101™ Translator. Specific features are described in their own sections.

Use *Troubleshooting* to find solutions to common problems.

This guide uses the following typographical conventions:

- **Boldfaced** words and phrases represent items that may be selected or pressed such as screen controls, buttons, and keys.
- *Italicized* words and phrases represent non-interactive items such as the names of screen dialogs, or chapters in this guide.
- ***Boldfaced italicized*** words represent *Hot Menu* buttons.

Getting started

Read this section to get started using your Translator quickly.

What's Included

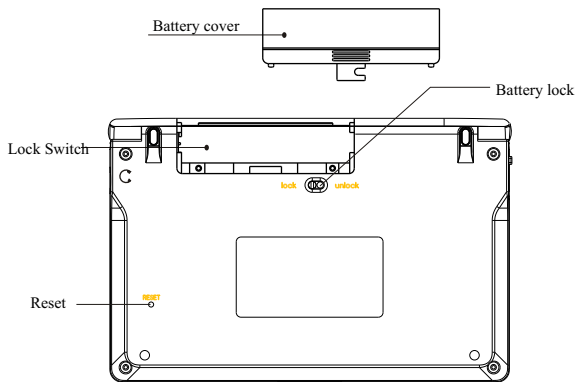
The AM101™ English Chinese pronouncing Translator includes:

- AM101™ English Chinese Translator
- Two 1.5V alkaline AAA batteries
- USB interface cable
- Earbuds
- Carrying case
- *User Guide*

If any of these items are missing, contact your reseller immediately.

Installing the Batteries

On the back of the Translator



1. Move the lock switch to **UNLOCK**.
2. Push the battery cover open.
3. Insert two 1.5V alkaline AAA batteries as marked.
4. Replace the battery cover.
5. Move the lock switch to **LOCK**.

Note: When you turn-on the Dictionary after installing batteries for the first time, or taking longer than 30 seconds to replace old batteries, a message alerts you to reset the date and time. Press **Enter**, or from the *Main Menu*, choose **Tools > Calendar**, to set the current date and time.

Opening and Closing the Dictionary

To open the Translator:

1. At the front, press and hold the clasp with one hand.
2. Lift the lid with the other hand.

To close the Translator:

1. Close the lid until it clicks into the clasp.

Note: If you do not turn-off the Dictionary before closing the lid, it will turn itself off 10 minutes after the number of minutes set in **System > Settings > Power Management**.

Turning the Dictionary On and Off

To turn-on the Dictionary, press the **Power** button. After the Translator finishes loading, the *Main Menu* displays.

To turn-off the Dictionary, press the **Power** button. After a brief delay, the Translator shuts down.

Note: When idle, the LCD screen will blank after the number of minutes set in **System > Settings > Power Management**. The Translator will turn itself off 10 minutes later.

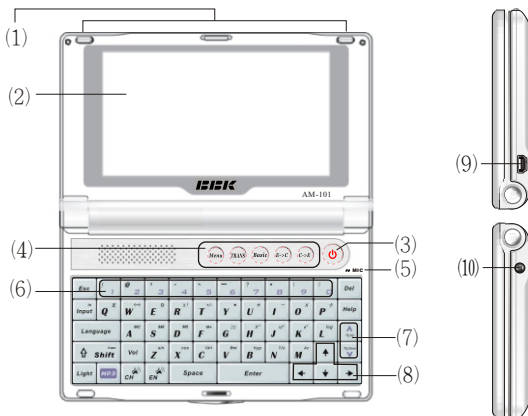
Turning the Lights On and Off

When the Translator is on, press the **Light** key to cycle between lighting conditions:

- LCD Screen backlighting only.
- Both LCD screen backlighting and keyboard lights.
- No lighting

Using Keys and Menus

The Translator's keyboard resembles a standard computer keyboard, with some additional features.



1. Background Light

3. On/Off

5. MIC

7. Page Up/Down

9. USB Connector

2. LCD Screen

4. Functional Hot Keys

6. Number/Symbol Keys

8. Up/Down/Left/Right

10. Earphone

Menu Buttons

Power: Turn Translator on or off.

Hot Buttons

- **Menu:** Return to the *Main Menu*.
- **TRANS:** Open *English to Chinese Translator*.
- **Basic:** Open *Basic English to Chinese Dictionary*.
- **E -> C:** Open *Extended English to Chinese Dictionary*.
- **C -> E:** Open *Extended Chinese to English Dictionary*.

Input Keys

- **Numbers and Letters:** Input numbers and letters.
- **Shift:** capitalize letters, or select alternate symbols and functions.
- **Space:** Input space between characters.
- **Enter:** Create new line when inputting numbers and Letters; select highlighted items.
- **Del:** Delete character to the left of the cursor.

Navigation Keys

- **Esc:** Cancel current action; return to previous dialog or menu.
- **PgUp** and **PgDown:** Scroll up or down an entire screen at a time.
- **Arrows:** Move cursor or selection vertically or horizontally one line or character at a time.

Function Keys

- **Input:** Cycle between methods for inputting Chinese characters.
- **Language:** Cycle between English, Traditional And Simplified Chinese interface.
- **Vol:** Open audio volume control.
- **Light:** Cycle between LCD screen lighting options.
- **MP3:** Open MP3 Player.
- **CH:** Pronounce highlighted Chinese character(s).
- **EN:** Pronounce highlighted English word(s).
- **Help:** Open context-sensitive help.

Note: Most keys have alternate functions in different contexts. For example, pressing **1** with the *Main Menu* displayed, opens the *Translator* menu. These alternate functions are described within their specific contexts throughout this *User Guide*.

About Menus and Dialogs

There is usually more than one way to do something. For example, if you wanted to open the *English to Chinese Extended Dictionary*, you could repeatedly press **Esc** until the *Main Menu* appeared, then repeatedly press **PgUp** or **PgDown** until the **Dictionary** tab was selected, press **Enter**, then **Down-arrow** once, then press **Enter** again.

Or, you could press the *E -> C* hot button.

This *User Guide*, does not document all the ways to do things. Instead, it tries to describe the least number of steps to accomplish tasks. Here are some general principles that will help you become familiar with how menus and dialogs work in your AM101™:

- **Highlight for action:** You will often highlight an interface object such as a tab, or menu choice, or character, before doing some action such as pressing **Enter**. Use the **Arrow** keys to highlight objects, or move the highlight to another object.
- **Enter triggers action:** Pressing **Enter** generally activates the highlighted action. It is the equivalent of A mouse click.
- **Esc to exit:** To exit a dialog, or return to the parent menu or dialog, press **Esc**.
- **Shortcut keys:** Most interface objects menu choices, buttons, and so on have numbers, letters or other characters associated with them. Press the associated character to activate that object. For example, from the *Main Menu*, press **2** to open the *Dictionary* menu.

Note: Numbers and letters associated with scrolling menu items often do not scroll with the menu items themselves. In the *Dictionary* menu for example, pressing **F** always opens the last menu item, which can be **Medical**, **Law**, **Chinese Idiom**, or **Vocabulary**.

Getting Help

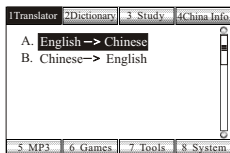
There are several ways to get help using your AM101 Translator:

- Press **Help**.
- Read this *User Guide*.
- Go to http://www.bbkusa.com/am101_support.html

Translator

Use the Translator to translate between English and Chinese, and pronounce the translation. From the *Main Menu*:

- Press **1** to highlight the **Translator** tab.
- Press **A** or **B** to open the **English→Chinese** or **Chinese→English** translators.



English to Chinese

Note: Press the **TRANS** hot button to immediately open the *English to Chinese* translator at any time.

1. Use the keyboard to enter an English word, phrase, or one or more sentences.

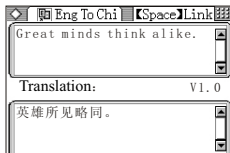
It is not necessary to capitalize the first word of a sentence. If there is no more than one sentence, terminate it with a period. Otherwise, for proper translation, end multiple sentences each with a period, end questions with question mark, and separate phrases with commas as necessary for meaning. For example:

- *how is the fish I don't like salmon* will not be translated the same as *how is the fish? I don't like salmon.*
- *how good is the fish* will not be translated the same as *how good is the fish?*
- *what's this thing called love?* will not be translated the same as *what's this thing called, love?*

Punctuation keys:

- **Shift+1**: Exclamation mark (!)
- **Shift+3**: Comma (,)
- **Shift+4**: Period (.)
- **Shift+5**: Apostrophe (')
- **Shift+7**: Question mark (?)

2. Press **Enter** to translate the English into Chinese.
3. Press the **CH** key to hear the Chinese translation pronounced.
4. Press **Esc** to clear the English input box.
(Press **Esc** again to exit the *English to Chinese* translator.)



Linking Chinese Characters

You can get additional information about each Chinese character in the translation.

1. Press **Shift+Down-arrow** to switch from the English input box to the Chinese translation box.
2. Press **Space** to select the first Chinese character.
3. Use **Arrow** keys to move the selection to the desired Chinese character.
4. Press **Enter** to list Chinese words and phrases beginning with that character.
5. Use **Down-** or **Up-arrow** to select a word or phrase in the list.
6. Press **Enter** to open the *Chinese to English* definition of that character.
The English definition begins playing.
 - Press **Esc** to stop playback, or press the **EN** key to restart definition playback.
 - When the definition finishes playing, press **Esc** to return to the *English to Chinese* translator.

To switch back from the Chinese translation box to the English input box, press **Shift+Up-arrow**.

Chinese to English

In the Chinese input box, enter a word, phrase, or one or more sentences using Pin-Yin or Chinese characters.

Note: For information about using Pin-Yin or Chinese radicals to enter Chinese, from the *Main Menu*, press **3** to highlight the **Study** tab, then press **E** or **F** to open the **Chinese Pin-Yin** or **Chinese Radicals** sections.

Pin-Yin

1. Press **Input** until the *Pin(-Yin)* label [拼] appears at the bottom left corner of the *Chinese to English* translator.
2. Use letter keys to type a Pin-Yin word.
What you type appears to the right of the Pin label. Further to the right, the list of corresponding Chinese characters changes as you type.
3. When finished, find the desired Chinese character in the list.
If the list is longer than one line, an arrowhead (►) appears. Use **Right-** or **Left-arrow** to move to the next or previous row.
4. When a row contains the desired character, press the number key corresponding to it.
The character then appears in the Chinese input box.
5. Repeat until the word, phrase, or sentence you want to translate is complete, and then press **Enter**.
The English translation will appear in the English translation box.
6. Press the **EN** key to hear the English translation pronounced.
7. Press **Esc** to clear the Chinese input box. (Press **Esc** again to exit the *Chinese to English* translator.)

Chinese Characters

1. Press **Input** until the *bu(shou)* [部] or *wu(bi)* [五] label appears at the bottom left corner of the *Chinese to English* translator.
2. Find the desired Chinese character in the list to the right of the label.
If the list is longer than one line, an arrowhead (►) appears. Use **Right-** or **Left-arrow** to move to the next or previous row.
3. When a row contains the desired character, press the number key corresponding to it.
The character then appears in the Chinese input box.
4. Repeat until the word, phrase, or sentence you want to translate is complete, then press **Enter**.
The English translation will appear in the English translation box.
5. Press the **EN** key to hear the English translation pronounced.
6. Press **Esc** to clear the Chinese input box. (Press **Esc** again to exit the *Chinese to English* translator.)

To enter punctuation, press **Input** until the punctuation label appears, and then enters the desired symbol in the same manner as described above.

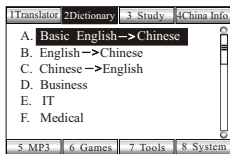
Linking English Words

As with the English to Chinese translator, you can get additional information about each English word in the translation. (See *English to Chinese: Linking Chinese Characters*.)

Dictionary

The AM101™ includes several dictionaries:

- Basic English to Chinese Dictionary.
- Extended English to Chinese and Chinese to English dictionaries.
- Specialty English to Chinese dictionaries for business, computers, both Western and Chinese Medicine, law, and the military.
- English to Chinese and Chinese to English idiom dictionaries
- Grouped vocabularies of English words organized by subject, and their Chinese equivalents.



Open a Dictionary

From the *Main Menu*:

1. Press **2** to highlight the **Dictionary** tab.
2. Press the letter corresponding to the desired dictionary.

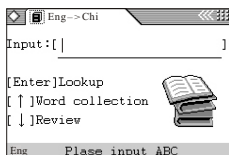
Note: To see all dictionary choices, use Down-arrow to scroll through the menu.

You can also open three of the dictionaries directly, by pressing the following hot buttons at any time:

- **Basic:** Open *Basic English to Chinese Dictionary*.
- **E -> C:** Open *Extended English to Chinese Dictionary*.
- **C -> E:** Open *Extended Chinese to English Dictionary*.

Find English Entries

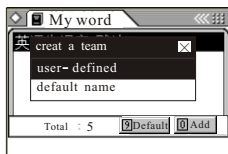
With the exception of the Grouped Vocabulary, each dictionary's menu offers three choices to find an entry:



- **Input:** Enter word
 1. Begin typing and *Basic Dictionary* lists entries having those letters.
 2. Highlight the desired entry, and then press **Enter**.
- **Word Collection:** List collected entries.
 1. Press **Up-arrow** to open the *My Word* dialog.
 2. Use **Down-** or **Up-arrow** to highlight a word collection.
 3. Press **Enter** to list entries in that collection.
 4. Use **Down-** or **Up-arrow** to highlight an entry.
 5. Press **Enter**.
- **Review:** List most-recently viewed entries.
 1. Press **Down-arrow** to open a list of most-recently viewed entries.
 2. Use **Down-** or **Up-arrow** to highlight an entry
 3. Press **Enter**.

Create a Word Collection

Frequently used entries can be stored in a word collection for quick access. To create a word collection:



1. Open a dictionary.
2. Press **Up-arrow** to open the *My Word* dialog, listing existing word collections.
3. Press **0**, then choose **user-defined**.
4. In the *Input term name* box, type a name (10 letters or less) for the new word collection.
5. Press **Enter**.
6. To make any word collection the default, highlight it, and then press **0**.
Default word collections are automatically highlighted when adding a word to a word collection
7. Press **Esc** to return to the dictionary.

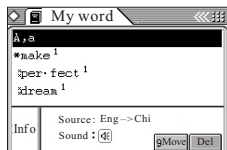
Add Entries to a Word Collection.

1. Open a dictionary and find an entry as previously described.
 2. Press **0** to open the *Choose term* dialog.
 3. Highlight the desired word collection.
 4. Press **Enter**.
- The new word will be added at the bottom of the selected word collection.



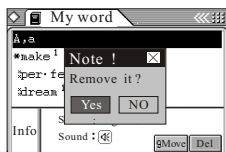
Move an Entry to another Collection

1. Open the word collection containing that entry.
2. Highlight the entry to move.
3. Press **9** to list available word collections.
4. Highlight the desired collection.
5. Press **Enter** to move the entry into the selected collection.



Delete an Entry from a Collection

1. Open the word collection containing that entry.
2. Highlight the entry to move.
3. Press **Del** to delete the highlighted entry.



Find Chinese Entries

Procedures to find entries and create word collections are essentially the same for Chinese entries in the Extended Chinese to English, and Chinese Idiom dictionaries, as they are for English to Chinese dictionaries. They differ only in how Chinese characters are inputted. Rather than typing Chinese characters, they are selected as described for the *Chinese to English* translator above.

Vocabulary Dictionary

The Vocabulary dictionary differs from other dictionaries in that its entries are not listed alphabetically. Instead, they are grouped into common categories. For example, opening the Vocabulary dictionary lists choices such as Clothing, Food, and Residence. Choosing Clothing lists additional choices such as Women Clothes, Men Clothes, and so on. Choosing Women Clothes yields 18 entries, the first being *qí pào*, a "close-fitting Chinese woman's dress with a high neck and a slit skirt." Other entries in this category include suit (*tào zhuāng*), and miniskirt (*mí nǚ qún*).

The total number of entries in a category is indicated at the bottom right corner of each entry. For example, for *qí pào* 1/18 indicates it is the first of 18 entries for Women's Clothes. Use **Right-** or **Left-arrow** to view the other entries in this category.

Study

1. Press **3** to highlight the **Study** tab.
2. Press the letter corresponding to the desired study module:
 - **Chinese Restaurant Menu**: Foods categorized and listed by type and preparation.
 - **Telephone Chinese** Conversation: Categorized telephone conversations (interactive).



- **English Phonics:** English phonics for native Chinese speakers.
- **Daily Chinese Conversation:** Categorized daily conversations (interactive).
- **Chinese Pin-Yin:** Information about the Pin-Yin method of representing Chinese characters.
- **Chinese Radicals:** Information using the 214 basic Chinese characters.

Chinese Restaurant Menu

1. Use **Down-** or **Up-arrow** to highlight **Browse** or **Search**.
2. Press **Enter**.

Browse

Restaurant menu items are categorized by type, such as Pork, Chicken, and Fish.

1. Use **Down-** or **Up-arrow** to highlight a category.
2. Press **Enter** to open either a subcategory, or a list of foods of that type.

Note: Although types are numbered, pressing the corresponding numbered keys will *not* open that subcategory or list. Instead, press **Enter**.

3. Use **Down-** or **Up-arrow** to scroll through food lists.

Search

Restaurant menu items are categorized by preparation, such as boiled, cold, or crisp.

1. Use **Arrow** keys to highlight a category.
2. Press **Enter** to open a list of foods of that type.
3. Use **Down-** or **Up-arrow** to scroll through food lists.

Telephone Chinese Conversation

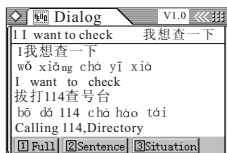
1. Use **Down-** or **Up-arrow** to highlight **Communication on Telephone** or **Telephone Consulting**.
2. Press **Enter** to open a list of conversations.
 - Use **Down-** or **Up-arrow** to highlight a conversation.
 - Use **Right-** or **Left-arrow** to scroll horizontally.
3. Press **1** to open the highlighted conversation.

The highlighted conversation displays with each part in Chinese characters, Pin-Yin, and English.

Note: Although conversations are numbered, pressing the corresponding numbered keys will *not* open that conversation. Instead, press **1** or **Enter**.

The unnumbered item... [DIR] refers to the list's parent. Highlighting it, then pressing **1** or **Enter** is the same as pressing **2** or **Esc**. It returns to the previous menu.

4. Use **Down-** or **Up-arrow** to scroll through the conversation, line-by-line.
 - Press **1** to hear the entire conversation in Chinese.
 - Press **2** to hear the highlighted line in Chinese.
 - Press **3** to speak one part of the entire conversation.
5. Press **Esc** to quit the conversation.



Find Specific Lines of Conversations

To find lines of conversations that contain a specific word:

1. From either of the *Telephone Chinese Conversation* menus, press **3 (Find)**.
2. In the input box, type a single word from a conversation.
3. Press **Enter** to list lines of conversations containing that word.
4. Use **Down-** or **Up-arrow** to highlight the desired line.
5. Press **Enter** to display that line.

Daily Chinese Conversation

Daily Chinese Conversation functions the same as *Telephone Chinese Conversation*, but with slightly different controls

1. Use **Down-** or **Up-arrow** to highlight **Functional Expressions** or **Situational Expressions**.
2. Press **Enter** to open either a subcategory, or a list of conversations.
 - Use **Down-** or **Up-arrow** to highlight a conversation.
 - Use **Right-** or **Left-arrow** to scroll horizontally.
3. Press **Enter** to open the highlighted conversation.

The highlighted conversation displays with each part in Chinese characters, Pin-Yin, and English.

Note: Although conversations are numbered, pressing the corresponding numbered keys will *not* open that conversation. Instead, press **Enter**.

The unnumbered item... [DIR] refers to the list's directory. Highlighting it, then pressing **Enter** is the same as pressing **Esc**. It returns to the previous menu.

Conversation Controls

1. Press **P** to play the conversation from the beginning.
2. Press **S** to stop playback, returning to beginning of conversation.
3. Press **A** to pause or continue playing the conversation.
4. Press **1** to repeat the conversation played thus far.
5. Press **2** to play the next line.
6. Press **3** to repeatedly play the last two lines.
7. Press **Esc** to deselect lines of conversation.



English Phonics

This section provides information on pronouncing English for native Chinese speakers.

Chinese Pin-Yin

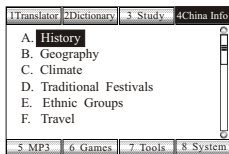
This section provides information on the Pin-Yin method of representing the Chinese language, and how to pronounce it. It uses the same playback controls as the *Daily Chinese Conversation* section above.

Chinese Radicals

This section provides information about the 214 Chinese characters that are used to modify the meaning of other characters, and are also used to organize lists of Chinese characters.

Travel Features

The AM101™ includes an MP3 player/recorder and keyboard-based games, as well as calendar, time, calculator, and conversion functions, and general information about life and travel in China.



China Information

The **China Info** tab provides useful information about China, its people and culture. From the *Main Menu*:

1. Press **4** to highlight the **China Info** tab.
2. Press the letter corresponding to the desired general topic:
 - **History**: Chinese history from prehistoric times through 1919.
 - **Geography**: Facts about the land, resources, plants and animals of China.
 - **Climate**: Yearly weather experienced throughout China.
 - **Traditional Festivals**: History and meaning of annual festivals in China.
 - **Ethnic Groups**: Description of the 56 ethnic groups in China.
 - **Travel**: Useful information and places to visit while visiting China.
 - **Culture**: Cultural events and activities.
3. Use **Down-** and **Up-arrow** to highlight a specific topic.
4. Press **Enter** to read that topic.

MP3 Player/Recorder

To play MP3 files, or make WAV file microphone recordings:

- Press **5** to highlight the **MP3** tab.



MP3 Player

You can play MP3 and WAV audio files on your AM101™.



Transfer Mp3 Files

Before you can play MP3 files, these files must be transferred from a Windows® XP computer to the AM101™ MP3 directory:

1. Attach the supplied interface cable's USB terminal to a USB port on the computer.

2. Open the AM101™ digital port, and attach the other end of the cable to the AM101™ digital port.

After a brief moment, the computer may play the connection sound.

If this is the first time the AM101™ is being connected, a series of dialogs will display indicating Windows has found a new device. It will eventually identify the device as BBK DICT USB Device.

The computer displays a dialog. Unless Chinese characters are installed on the computer, the dialog's title will be **AM101**.

3. Select **Take no action**, and then click **OK**.
4. Open Windows Explorer (**Windows+E**).

Beneath My Computer will be a device named **AM101**.

Note: There is at least one file and two directories in the root of this device: kernel.bin, and mp3 and (if Chinese characters are not installed) **AM101**. **DO NOT** delete or otherwise modify kernel.bin or **AM101**. (See also, *Troubleshooting: "Please recover system with the disk."*)

5. Select and open the mp3 directory.
6. Transfer MP3 files from the computer to the AM101™ mp3 directory.

Note: There is usually no more than 50 MB of free space available enough for about 20 normal songs.

While in Windows Explorer, you can create new directories, rename and delete files, and so on. **DO NOT** however, delete or otherwise modify kernel.bin or **AM101**.

When finished transferring files, disconnect the AM101™:

1. From the Windows® System Toolbar, click the **Safely Remove Hardware** icon.
2. Select **Safely remove USB Mass Storage Device Drive (letter:)**
3. When it's safe to remove the device, a message displays that fact.
4. Remove the supplied interface cable from the AM101™, and from the computer if desired.

Play MP3 Files

To play an MP3 file:

- From the **MP3** menu, press **A** to open the **MP3 Player**.

Note: Press the **MP3** key to immediately open the **MP3 Player** at any time.

Create a playlist:

1. Press **0** to list MP3 files in the MP3 directory.
 - Press **A** to select or deselect all files in the list.
 - Use **Down-** or **Up-arrow** to highlight files in the list, and then press **B** to select or deselect that file.
Selected files now display in the Player's playlist.
2. Use **Down-** or **Up-arrow** to select the starting song.
3. Press **Enter** to begin playing songs.

To select files, including WAV files, in other directories:

1. Press **F** to display the current directory.

The directory path displays at the bottom of the screen, for example, as A:\MP3\.

2. Use **Down-** or **Up-arrow** to highlight a file (.MP3 or .wav) or directory ([DIR]).
3. Press **Enter** to select the highlighted file or directory.

If a valid audio file is selected, it begins playing in the Player.

Set Play Order

1. Press **R** to open the play order dropdown list.
2. Use **Down-** or **Up-arrow** to highlight a play order:
 - **Single**: Play selected song only.
 - **All**: Play all songs in playlist.
 - **Shuffle**: Play all songs in playlist in random order.
 - **Sequence**: Play all songs in playlist in order listed.
3. Press **Enter** to select the highlighted option.

Set Equalizer

1. Press **M** to open the equalizer dropdown list.
2. Use **Down-** or **Up-arrow** to highlight an equalizer setting.
3. Press **Enter** to select the highlighted option.

Set Player Skin

- Press **S** to cycle between different Player skins.

Player Controls

- Press **1** to play or pause playback.
- Press **2** to stop playback, returning to beginning of song.
- Press **3** or **4** to play previous or next song in playlist.
- Press **5** or **6** to move backward or forward in current song.
- Press **7** or **8** to decrease or increase playback volume.

Note: Press the **Vol** key at any time to open the *Volume* dialog, then use **Left-** or **Right-arrow** to decrease or increase playback volume.

- Press **9** to display current song's lyrics if the song has lyrics file associated with it.

Recorder

To record WAV audio files:

- From the *MP3* menu, press **B** to display the *MP3 Recorder*.

Playback existing recordings:

1. Use **Down-** or **Up-arrow** to highlight a WAV file or directory ([DIR]).
2. Press **Enter** to select the highlighted file or directory.

If a valid audio file is selected, it begins playing in the Recorder.

Playback Controls

- Press **1** to play or pause selected recording.
- Press **2** to stop playback, returning to beginning of recording.

- Press **3** to start *Recorder*.
- Press **4** to delete selected recording.
- Press **5** or **6** to move to beginning or end of selected recording.
- Press **7** or **8** to decrease or increase playback volume.

Record from Microphone

Set recording volume:

- Press **7** or **8** to decrease or increase recording volume.

Note: Recording volume is also affected by the source's loudness and how close it is to the MICrophone.

Select directory to store recording:

1. Use **Down-** or **Up-arrow** to highlight a WAV file or directory ([DIR]).
2. Press **Enter** to select the highlighted file or directory.

Start recording:

- Press **3** to record from MICrophone.

Recorder Controls

- Press **1** to play or pause unsaved recording.
- Press **2** to stop recording.
- Press **3** to save (and name) recording.
- Press **4** to exit recorder *without saving*.
- Press **5** to save recording with default name (Recnnnnn.wav) in the current directory.

Games

The **Games** tab provides keyboard-based games. To play a game, from the *Main Menu*:

1. Press **6** to highlight the **Games** tab.
2. Press the letter corresponding to the desired game.
3. Press **Help** for instructions on how to play the game.

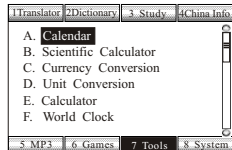
To quit a game:

1. Press **Esc**.
2. Press **Right-** or **Left-arrow** to highlight **No** or **Yes**.
3. Press **Enter** to select the highlighted choice.

Tools

The **Tools** tab provides calendar, time, calculator, and conversion functions. From the *Main Menu*:

1. Press **7** to highlight the **Tools** tab.
2. Press the letter corresponding to the desired tool.



Calendar

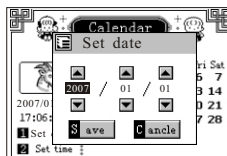
To change the displayed date:

1. Press **Right-** or **Left-arrow** to change day.
2. Press **Up-** or **Down-arrow** to change month.
3. Press **PgUp** or **PgDown** to change year.



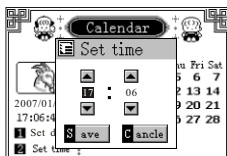
To set the date:

1. Press **1** to select *Set date*.
2. Use **Right-** or **Left-arrow** to select year, month or day.
3. Use **Up-** or **Down-arrow** to change selection.
4. When finished, press **S** to save changes, or **C** to close *Set date* without saving changes.



To set the time:

1. Press **2** to select *Set time*.
2. Use **Right-** or **Left-arrow** to select hour or minute.
3. Use **Up-** or **Down-arrow** to change selection.
4. When finished, press **S** to save changes, or **C** to close *Set time* without saving changes.



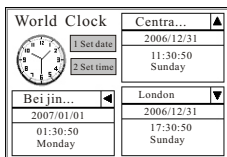
Note: Date and time set for Calendar is the same as date and time set for World Clock's current location.

World Clock

To display date and time at two locations based on date and time in current location:

Set current location:

1. Press **Left-arrow** to open current location list.
2. Press **Down-** or **Up-arrow** to highlight current location.
3. Press **Enter** to select highlighted location.



Set current location's date and time:

- Press **1** to set date, or **2** to set time. (See *Tools: Calendar.*)

Note: Date and time set for **World Clock**'s current location is the same as date and time set for **Calendar**.

Set other locations:

1. Press **Up-** or **Down-arrow** to open other location list.
2. Press **Down-** or **Up-arrow** to highlight desired location.
3. Press **Enter** to select highlighted location.

Calculator

To perform basic calculations:

1. Input numbers, operators, and memory functions sequentially, left-to-right (*not* RPN).
2. When finished, press **Enter** for results.
 - Press **Shift+Y** to input a decimal point.
 - Press **Shift+M (Ac)** to clear input.

Available input keys:

- *Numbers:*
Number keys **1** through **0**.
- *Operators:*
Shift+U (+): Add.
Shift+I (-): Subtract.
Shift+O (x): Multiply.
Shift+P (÷): Divide.
- *Memory Functions:*
Shift+A (MC): Memory Clear.
Shift+S (MR): Memory Recall.
Shift+D (MS): Substitute input for memory contents.
Shift+F (M+): Add input to memory contents.

Scientific Calculator

The Scientific Calculator operates the same as the previously described basic Calculator. It also includes additional functions accessed by pressing the **Shift** key and a letter key.

- Press **Shift+Y** to input a decimal point.
- Press **Shift+M (Ac)** to clear input.

To change the input number base:

- Press **Shift+W (↔)** to cycle between **Hex**(idecimal), **Dec**(imal), **Oct**(al), or **Bin**(ary).
Unavailable alphanumeric keys are shaded.

To change angle units:

- Press **Shift+E (°)** to cycle between **Deg**(rees), **Rad**(ians), or **Gra**(dians).

To toggle Inverse or Hyperbolic functions on or off:

- Press **Shift+V (Inv)** or **Shift+B (hyp)**.

Currency Conversion

To convert the value of currency A to the corresponding value of currency B at a specified exchange rate:

Select currencies:

1. Press **A** or **B** to open a **currency** dropdown list.
2. Use **Down-** or **Up-arrow** to highlight a desired currency.
3. Press **Enter** to select the highlighted currency.

Input currency exchange rate:

1. Press **H** to select the **exchange rate** input box.
 - Use **Left-** or **Right-arrow** to move the exchange rate cursor.
 - Edit the exchange rate with the number, **Del**, and **Shift+Y** (.) keys.
Selected files now display in the Player's playlist.
2. When finished, press **Enter**.

Convert currency:

1. In the **input sum** box, type the value of currency A to be converted to currency B.
 - Press **Shift+Y** to input a decimal point.
 - Press **R**(enew) to clear the input value.
2. Press **Enter** to display the corresponding value of currency B in the **answer** box.

Unit Conversion

To convert a value of units A to the corresponding value of units B using standard conversions:

Select units:

1. Press **A** or **B** to open a **unit** dropdown list.
2. Use **Down-** or **Up-arrow** to highlight a desired unit.
3. Press **Enter** to select the highlighted unit

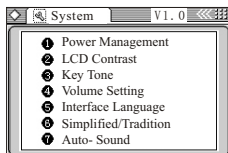
Convert units:

1. Use **Down-** or **Up-arrow** to select the **value A** or **value B** input box.
2. Input the value to be converted.
3. Press **Enter** for results.

System Settings

The **System** tab controls the Dictionary's appearance, and how it operates. From the *Main Menu*:

1. Press **8** to highlight the **System** tab.
2. Press **A** to choose the *Settings* menu.
3. Press the **Number** corresponding to the desired setting.

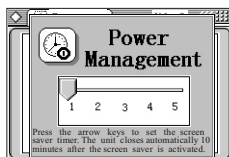


Power Management

To set the time before the LCD screen blanks:

1. Use **Left-** or **Right-arrow** to decrease or increase time from 1 to 5 minutes.
2. When finished, press **Enter**.

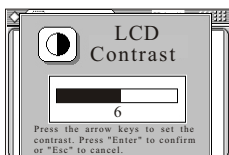
The LCD screen will blank when there has been no keyboard activity for the specified time. The Translator will then turn itself off 10 minutes after the screen blanks. Until the Translator turns itself off, press any key to restore the LCD display.



LCD Contrast

To adjust the LCD screen contrast:

1. Use **Left-** or **Right-arrow** to decrease or increase contrast,
2. When finished, press **Enter**.



Key Tone

To turn tone on or off when keys are pressed:

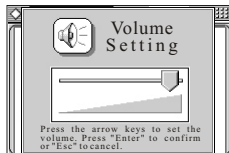
1. Use **Left-** or **Right-arrow** to highlight **Open** (on) or **Closed** (off).
2. When finished, press **Enter**.



Volume Setting

To set volume for speech, music, alarms, and key tone:

1. Use **Left-** or **Right-arrow** to decrease or increase volume.
2. When finished, press **Enter**.



Interface Language

To change the language used for on-screen displays:

1. Use **Down-** or **Up-arrow** to cycle between **English**, **Simplified** (Chinese), and **Traditional** (Chinese).
2. Press **Enter**.

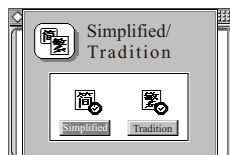
You can also use the **Language** key to change the interface language.



Simplified/Traditional Chinese

To change characters used for Chinese translations and dictionary definitions:

1. Use **Left-** or **Right-arrow** to highlight **Simplified** (Chinese) or **Traditional** (Chinese).
2. When finished, press **Enter**.



Auto-Sound

To turn on / off automatically pronunciation for the definition in Chinese

1. Use **Left-** or **Right-arrow** to highlight **Open** or **Close**
2. When finished, press **Enter**.



Battery Power

To display battery status:

1. Press **8** to highlight the **System** tab.
2. Press **B** to choose **Battery Power**.

The *Battery State* screen displays the current battery output in volts (V), and a graphic indicating remaining battery power. (See *Installing the Batteries* in *Getting Started* above.)

USB Disk

To display general information about using the AM101™ as a storage device:

1. Press **8** to highlight the **System** tab.
2. Press **C** to choose **USB Disk**.

For more detailed instructions, see *Travel Features: Transfer MP3 Files*.

Troubleshooting

Before contacting Technical Support, review the following for answers to your question.

Dictionary won't turn on.

Pressing the **Power** button should turn-on the Dictionary to the *Main Menu*. If it does not:

- Make certain batteries are installed. (See *Getting Started: Installing the Batteries.*)
- If batteries are installed, exchange them for new, fully-charged ones.
- If the batteries are fully-charged, use an unfolded paperclip to depress **Reset** on the back of the Translator.

LCD screen is dim or dark.

By default, LCD screen contrast is set at 30 (50%). Adjust it by choosing **System > Settings > LCD Contrast**. (See *System Settings: LCD Contrast.*)

Menu is in Chinese.

By default, the menus are in English. If this setting has been changed, reset it by choosing **System > Settings > Interface Language**. (See *System Settings: Interface Language.*) You can also cycle menus through English, Simplified Chinese, and Traditional Chinese by pressing **Language**. (See *Getting Started: Using Menus and Keys: Function Keys.*)

Pronunciation can't be heard or is too loud.

By default, pronunciation audio is set at 50%. Adjust it by choosing **System > Settings > Volume Setting**. (See *System Settings: Volume Setting.*)

Pressing keys has no effect in the Chinese-English Dictionary.

Letters keys only function to enter Pinyin. Number keys only function to select Chinese characters. To toggle between these modes, press the **Input** key. (See *Translator: Chinese to English.*)

Dictionary turns itself off.

By default, the LCD screen will blank when there has been no keyboard activity for the specified time. The Dictionary will then turn itself off 10 minutes after the screen blanks. Until the Dictionary turns itself off, press any key to restore the LCD display. To adjust this time, choose **System > Settings > Power Management**. (See *System Settings: Power Management.*)

MP3 does not play

Check file format. The AM101™ only supports MP3 and WAV files. Other formats such as MP2, AIFF, and so on, are *not* supported.

AM101™ not show up as USB mass storage device in Windows Explorer when connected to a computer.

Find U Disk from “My Computer” -> “Characteristics”-> “Management”-> “Disk Management”, click U Disk with the right key-> “Change Disk Drive Name and Route”-> “Edit”-> “Allocate a Drive Letter” to change the drive letter.

AM101™ fails to connect with Windows® computer.

- Make certain the interface cable is correctly connected at both ends.
- If using a secondary USB port on the front of the computer, use a USB port at the back of the computer.
- Do not use a USB extension line. Use the supplied USB interface cable.
- For Windows® operating systems older than Windows® 2000, install the USB driver.

"Please recover system with the disk."

When this message displays, the AM101™ system data has been lost, and must be reinstalled. Connect the AM-101™ to your Windows® XP computer (see *Travel Features: MP3 Player: Transfer MP3 Files*). Download the AM101_System.exe from <http://www.bbkusa.com> and run the file.

Specifications

Version: AM101™

Batteries: Two 1.5V alkaline AAA Batteries

LCD Screen: 240×160 pixels

FLASH Chip: 256M

Keyboard: 61 keys

Size: $126.0 \times 85.5 \times 15.8$ mm ($5 \times 3.4 \times 0.6$ inches)

Byte Database: Consistent with Gb2312

Type: Consistent with GB5199

Warranty

BBK Electronics USA

To register your purchase, go to www.bbkusa.com/registration.

LIMITED WARRANTY AND SERVICE

BBK Electronics USA warrants this product to be free from defective materials or factory workmanship and will replace or repair this unit or any part thereof, except batteries, if it proves to be defective in normal use or service within 180 days from date of original purchase. Our obligation under this warranty is the repair or replacement of the defective instrument or any part thereof, except batteries, when it is returned, transportation pre-paid, to BBK Electronics USA. This warranty will be considered void if the unit is tampered with, improperly serviced, or subjected to misuse, negligence or accidental damages, or the label "DO NOT OPEN" is removed or broken. There are no other express warranties other than those stated herein.

This warranty gives you specific legal rights. You may also have other rights that vary from state to state.

TO OBTAIN WARRANTY SERVICE write to service@bbkusa.com to obtain a RMA number for return authorization and return instructions. Please include a description of the defect and the date of the purchase so that we may establish your eligibility for warranty service and repair of the unit without cost. If the unit is returned within the warranty period shown above, please return the unit, marked with the RMA number.

IF THE UNIT IS OUTSIDE THE WARRANTY PERIOD, please check our website www.bbkusa.com for repair fees.

We are committed to continuously improving quality, improving features and updating software functions. Functions introduced in the guide should be consistent with factory default. Therefore, we will not accept any compensation claim based on data, pictures or word accuracy.

BBK Electronics USA
email: service@bbkusa.com