

DESCRIPTION ■ DESCRIPCIÓN

A Control lever with HIGH-LIFT position	A Levier de commande avec fonction HI-LIFT	A Palanca de mando con función HI-LIFT
B Browning selection knob, 7 positions (1 to 6 and DEFROST)	B Bouton de réglage 7 positions (1 à 6 et DEFROST)	B Botón de ajuste 7 posiciones (1 a 6 y DEFROST)
C STOP button	C Touche STOP	C Tecla STOP
D BAGEL button	D Touche BAGEL	D Tecla BAGEL
E Removable crumb tray	E Tiroir ramasse miettes amovible	E Bandeja recoge-migas extraíble

IMPORTANT SAFEGUARDS

When using electrical appliances, basic safety precautions should always be followed :

DO

- Read all instructions.
- The toaster must always be used in the upright position (not on its side or tilted forward or back).
- Before each use, make sure that the crumb tray is in its proper location.
- Regularly remove crumbs from crumb tray.
- The control lever must be in the "Up" position before attaching or disconnecting the plug from wall outlet.
- Unplug from outlet when not in use and before cleaning. Allow to cool down before cleaning and before putting on or taking off parts.
- This appliance is equipped with a polarized plug (one blade is wider than the other). To reduce the risk of electric shock, this plug is intended to fit into a polarized outlet only one way. If the plug does not fit fully into the outlet, reverse the plug. If it still does not fit, contact the KRUPS Consumer Service Department. Do not attempt to modify the plug in any way.
- If bread jams in the slots after toasting, the unit will automatically shut off. Disconnect the plug immediately from the wall outlet and wait for the appliance to cool before attempting to remove the bread.
- Disconnect the appliance if it shows any working abnormalities.

DO NOT

- Do not leave the appliance within the reach of children.
- The appliance is not intended for use by young children or inept persons without close supervision.
- Young children should be supervised to ensure they do not play with the appliance.
- Never leave the toaster unattended during operation, particularly when toasting for the first time or when changing settings.
- Do not use appliance for other than its intended use.
- Do not touch the metal parts or hot surfaces of the appliance when it is working.
- Oversized foods, metal foil packages, or utensils must not be inserted in a toaster as they may cause an electric shock or fire.
- The use of accessory attachments are not recommended by the appliance manufacturer as it may cause injuries.
- To protect against electrical shock do not immerse cord, plugs, or appliance in water or other liquids.
- Do not try to toast bread that may melt (with icing) or drip in the toaster and do not toast crusts as this may damage the appliance or cause a fire.
- Do not try to toast very thick slices of bread that could block the toasting mechanism.
- Do not operate any appliance :
 - with a damaged cord or plug ;
 - after the appliance malfunctions, or has been damaged in any manner. Please contact an authorized KRUPS service center for examination, repair, or adjustment, in order to avoid any risk of danger.
- Do not let the cord hang over the edge of countertop or come in contact with hot surfaces.
- Do not use outdoors. Avoid humid environments.
- Do not place on or near a gas or electric burner or near a heated oven.
- Bread can burn; do not cover this appliance while in use and do not use this appliance near any flammable materials such as curtains, under shelving or wall cupboards, etc. It should be attended when in use.
- Do not put paper towels, cardboard or plastic in, on or under the toaster.
- If flames were to arise from parts of the toaster, never attempt to extinguish them with water. Unplug the appliance and smother the flames with a damp cloth.
- Do not attempt to dislodge food when toaster is plugged in.
- Do not use this appliance as source of heating or drying.
- Do not use the toaster for cooking, grilling or defrosting frozen food other than bread products.

This product has been designed for household use only. Any professional use, inappropriate use or failure to comply with the instructions will void the warranty.

SAVE THESE INSTRUCTIONS

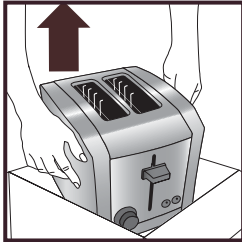
SAFETY INSTRUCTIONS

- For your safety, this appliance complies with applicable technical rules and norms.
- Check that the main voltage corresponds to the voltage indicated on the appliance (alternating voltage only).
- Because of the diversity of applicable norms, if this appliance is used in a country other than the country it was bought in, please contact the an authorized KRUPS service center.
- Use a stable work surface, away from any contact with water and never in a built-in kitchen alcove.
- Do not move the appliance when working.
- Do not disconnect the appliance by pulling on the cord.

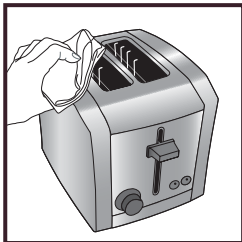
SHORT CORD

- a** A short power cord is provided to reduce risks resulting from becoming entangled in or tripping over a longer cord.
- b** Extension cords are available and may be used if care is exercised in their use.
- c** If an extension cord is absolutely necessary :
 - The marked electrical rating of the extension cord should be at least as great as the electrical rating of the appliance.
 - The cord should be arranged so that it will not drape over the countertop or tabletop where it can be pulled on by children or tripped over unintentionally.
- d** Do not unplug appliance by pulling on cord. Instead grasp plug and pull to disconnect.
- e** Never wrap cord around toaster. Use cord storage on the underside of unit.

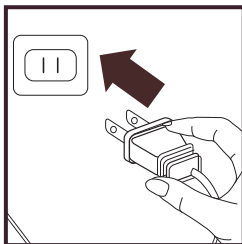
BEFORE FIRST USE



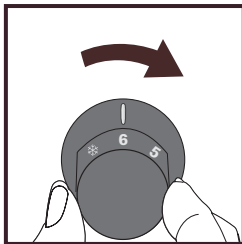
- Remove toaster from packaging.



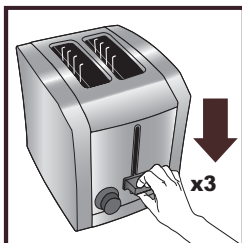
- Clean the toaster with a damp cloth.



- Unwind the power cord completely. Never operate with cord partially unrolled. Plug the toaster into the wall outlet.



- Turn dial to maximum browning setting without inserting any bread.



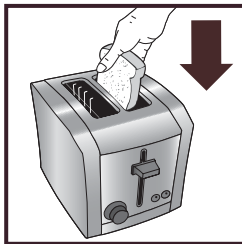
- Press lever for 3 sequential toasting sessions to remove "new" smell.

TOASTING BREAD

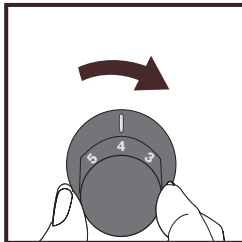
Helpful hints

Differences in moisture levels from one bread to another can result in varying toasting times and browning levels. Below are some general recommendations:

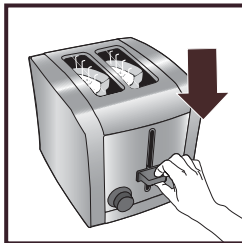
- Slightly dry bread should be toasted on a lower setting.
- Very fresh bread or whole wheat bread should be toasted on a slightly darker setting. Breads with uneven surfaces, such as English muffins, may require a darker setting.
- When toasting items with fruit, such as raisin bread or teacakes, remove any loose fruit before toasting (raisins may fall into the appliance and create a fire hazard).
- When toasting bagels, slice the bagel into two equal halves before toasting.
- If you are toasting one slice of bread, set the browning control to a lower setting.
- Use caution when warming or toasting sugar coated or filled items (such as toaster pastries). Always set the browning control to the lowest setting.



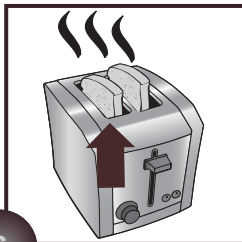
- Insert bread.



- Select browning level using the browning selection knob.

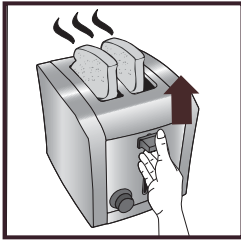


- Press down lever to start toasting. The toasting begins.
Note: The lever can only lock in the down position when plugged in.



- The toasting chamber automatically lifts the toast once the toasting cycle is complete. Never leave toaster unattended when in use.

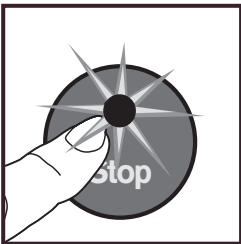
HI-LIFT



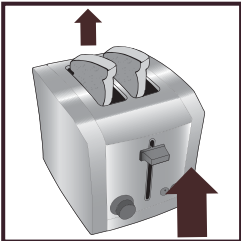
To remove smaller-sized breads after the toasting cycle.

- Push lever up in the high position and remove toast. Never insert anything into toaster especially when plugged in.

STOP/EJECT

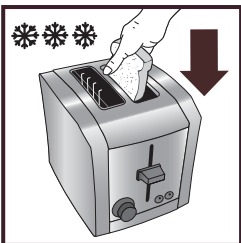


- Press the stop button at any time to stop the toasting cycle.



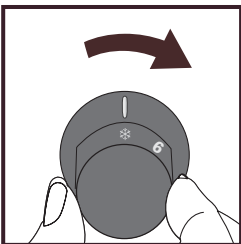
- The toasting chamber automatically lifts the toast and lever. Do not try to force lever up.

DEFROST

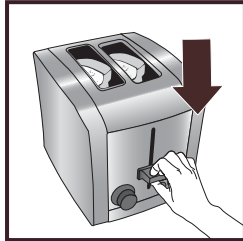


To toast frozen breads, use the Defrost setting.

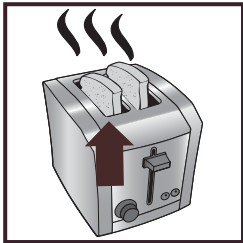
- Insert frozen bread.



- Select DEFROST position. Press down the lever to start toasting.

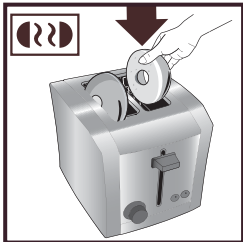


- The defrost function will take longer to toast than settings 1-6 as the toaster will automatically defrost the bread before toasting.



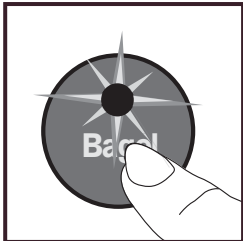
- The toasting chamber automatically lifts the toast and lever once the toasting cycle is complete.

BAGEL



To toast the bagel on the inside and warm it on the outside, use the Bagel button.

- Insert the bagel as shown, with the cut sides facing in and press the lever down to start toasting.



- Press the BAGEL button.

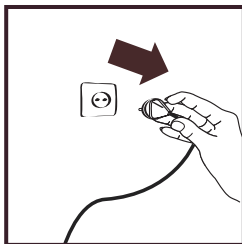


- The heating elements will turn on. Your bagel will toast on the cut sides and will be warm on the outside.



- The toasting chamber automatically lifts once toasting cycle is complete.

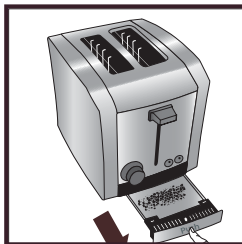
CLEANING



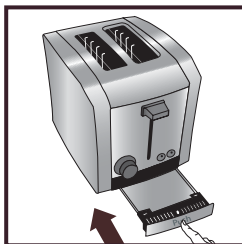
- Unplug the toaster from the wall outlet and allow the toaster to cool completely, approximately 10 minutes.



- Clean the toaster with a damp cloth.

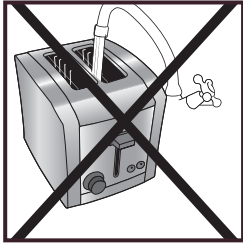


- A removable crumb tray is provided for easy cleaning. To open crumb tray, press on it once and remove. Press back again to close.

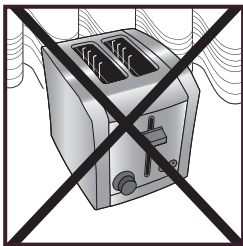


- Replace the crumb tray after cleaning.

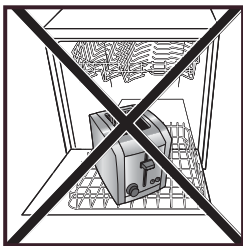
DO NOT



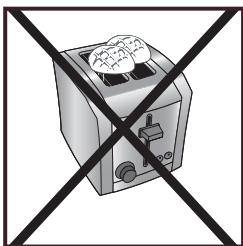
- Do not immerse toaster in water or run water into the toaster.



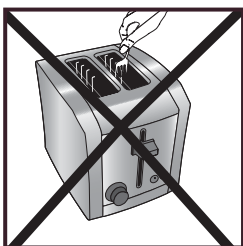
- Do not operate toaster under or around any flammable materials.



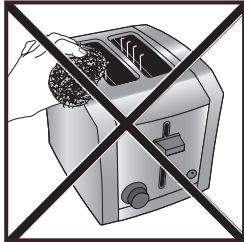
- Do not place the toaster in the dishwasher.



- Do not cover toast chambers when in use.



- Do not insert objects into the toaster.



- Do not use abrasive cleaners, metallic utensils or scouring pads.

LIMITED WARRANTY

This Krups product is warranted for 1 year from the date of purchase against defects in material and workmanship. During this period, the Krups product that, upon inspection by Krups, is proved defective, will be repaired or replaced, at Krups' option, without charge to the customer. If a replacement product is sent, it will carry the remaining warranty of the original product. This warranty does not apply to any defect arising from a buyer's or user's misuse of the product, negligence, failure to follow Krups' instructions, use on current or voltage other than that stamped on the product, wear and tear, alteration or repair not authorized by Krups, or use for commercial purposes.

THE WARRANTIES SET FORTH HEREIN ARE EXCLUSIVE AND NO OTHER WARRANTIES, EXPRESS OR IMPLIED, INCLUDING BUT NOT LIMITED TO ANY WARRANTY OF MERCHANTABILITY OR FITNESS FOR A PARTICULAR PURPOSE OR USE, ARE MADE BY KRUPS OR ARE AUTHORIZED TO BE MADE WITH RESPECT TO THE PRODUCT.

Some states do not allow limitation on how long an implied warranty lasts or do not allow the exclusion of incidental or consequential damages, so the above limitations may not apply to you. This warranty gives you specific legal rights, and you may also have other rights, which vary from state to state.

If you believe your product is defective, bring the product (or send it, postage prepaid) along with proof of purchase to the nearest authorized Krups Service Center. (Please contact your respective countries customer service department, indicated below, for the address of the nearest authorized Krups Service Center.)

If you send the product, please include a letter explaining the nature of the claimed defect.

If you have additional questions, please call our Consumer Service Department:

USA: 1-800-526-5377;

Mon – Fri 8:30 a.m. – 7:00 p.m. (EST).

www.KrupsUSA.com

Canada: 1-800-418-3325;

Mon – Fri 8:30 a.m. – 4:30 p.m. (EST)

www.Krups.ca

Please note hours are subject to change.

Before calling the Consumer Service Department, please have the type number of your KRUPS appliance available. You must have this information before calling our Consumer Service Department so that we may better answer your questions. The type number can be located by looking at the bottom of your appliance.

Any general correspondence can be addressed to:

USA:

KRUPS

196 Boston Avenue

Medford MA 02155

Only letters can be accepted at this address.

Shipments and packages that do not have a return authorization number will be refused.

Canada:

Groupe SEB Canada Inc.

455 Finchdene Square

Scarborough, Ontario M1X 1B7

ENVIRONMENTAL PROTECTION

- The packaging of your product is made of recyclable materials. Do not throw it out with your usual garbage; take advantage of your local recycling program.