

# VENTA AIRWASHER

## User Manual

FOR MODELS LW 15/25/45



**LW 15**

**QUESTIONS?**  
Service Hotline  
888-333-8218



**LW 25**



**LW 45**

**READ AND SAVE THESE  
IMPORTANT INSTRUCTIONS**

**venta®**  
**AIRWASHER**  
*Das Original*

**To Buy:** Visit [www.sylvane.com](http://www.sylvane.com) or call (800) 934-9194  
**For Product Support:** Contact VentaCare at (888) 333 8218

# VENTA AIRWASHER

## User Manual

**FOR MODELS LW 15/25/45**

### CONTENTS:

Important Safeguards-----	3
Letter from Venta -----	4
Unpacking your Airwasher -----	5
Before First Use-----	6
Operator panel-----	7
Daily Use and Operation-----	7
Main Components of the Venta Airwasher – Easy Access for Cleaning -----	8
Maintenance and Cleaning -----	9
Venta Water Treatment Additive (WTA)-----	10
Venta Cleaner -----	11
Venta Fragrances-----	12
Helpful Hints -----	12
Automatic shut-off / Troubleshooting -----	13
Frequently Asked Questions -----	14
Servicing your Venta Airwasher-----	16
Two (2) Year Limited Warranty -----	18



READ ALL INSTRUCTIONS:

## IMPORTANT SAFEGUARDS

---

### WARNING!

It is important that you read, fully understand, and observe the following safety precautions and warnings. Read these instructions periodically. Careless or improper use of your Venta Airwasher may cause serious or even fatal injury. Keep this User Manual with your Airwasher. Be sure anyone using your Airwasher understands the information contained in this manual.

---

- Children should not be allowed to operate the Airwasher.
- Always switch the motor off and unplug the switching power supply from the AC outlet before refilling it with water, adding Venta Water Treatment additive, Venta Cleaner or Venta Fragrances, or before moving, or handling the unit.
- Plug into 110-120V AC outlet only. Do not use your Airwasher if the switching power supply or plug is damaged. Do not replace a damaged switching power supply or plug. Only Venta may replace the switching power supply or plug.
- The Airwasher can only be operated with the "Model No. BI13-240050-CdU" switching power supply (included).
- Do not attempt any repair work. Maintenance or servicing the Venta Airwasher, other than described in this user manual, should only be done by Venta. Any modification to your Venta Airwasher is extremely dangerous and voids your warranty.
- Do not insert any objects into the air intake of the unit. It may damage the fan blades or cause injuries. After the motor is switched off, the fan continues to rotate for a short period of time.
- Do not use or store this product where it can fall or be pulled into a bath tub, sink, water, or other liquid. Do not reach for a unit that has fallen into water or other liquid. Do not immerse in water or other liquid, even when the unit is unplugged at that time. Moisture can cause an electric shock hazard when the unit is again plugged into the AC outlet. Wipe moisture off the unit with a dry cloth. Do not handle the switching power supply or the unit with wet hands.
- Use only genuine Venta fragrances.

*Read and follow separate instructions and Warnings for Venta Water Treatment Additive, Venta Cleaner, and Venta Fragrances.*

**Please contact Venta Airwasher Inc. at (888) 333 8218 or [www.venta-airwasher.com](http://www.venta-airwasher.com) for additional information.**

## **DEAR CUSTOMER,**

Thank you for choosing the Venta Airwasher humidifier and purifier. The Venta Airwasher does away with the inconvenience of filters. With its humidification and purification system, Venta represents a revolutionary and worldwide unique technology. There are no filters to become contaminated. Water is the filter which is renewed daily. If maintained properly, the Venta Airwasher will consistently provide high humidifying and purifying performance for many years.

## **WHY IS THE VENTA HUMIDIFICATION AND PURIFICATION SYSTEM A REVOLUTIONARY, UNIQUE TECHNOLOGY?**

- 1** It cleans and improves dry indoor air by washing it with water. No filters, no vaporization, no ions, no ozone, and no problems with white dust.
- 2** It automatically adds vital humidity through cold evaporation, recognized as the best method.
- 3** No endless cost of replacing dirty filters. Water is the filter, fresh every day, cleans consistently and always with the same high efficiency.

## **WHY IS HUMIDIFICATION PLUS PURIFICATION A SUPERIOR METHOD TO CLEAN THE AIR?**

Dry air is difficult to clean. Humidification plus purification is far more effective. Many airborne particles fall to the floor when moistened. Impurities of the air and odors are trapped in the water and eliminated while pure water evaporates.

Your investment in the Venta Airwasher humidifier will certainly prove worthwhile. Dry mucous membranes cannot intercept bacteria and stale tobacco smoke imposes a strain on the respiratory tract. Not only will you be protecting yourself and your family from these common ailments but it will also prove beneficial to your plants and pets. It can help preserve the beauty of precious antiques, musical instruments, and wooden floors and furnishings by maintaining a level of humidity between 40-55 % in your home or office.

Over half of all Venta Airwashers are sold on the basis of recommendations by satisfied customers. Our goal is that you are completely satisfied and that you recommend the Venta Airwasher to your family and friends. If you have any questions or concerns, please contact us at (888) 333 8218 or [www.venta-airwasher.com](http://www.venta-airwasher.com).

## UNPACKING YOUR AIRWASHER

- 1 Gently remove the Venta Airwasher from its shipping carton. Keep the packaging if you plan to safely store your Venta Airwasher during the summer months, or in case of warranty repair.
- 2 Lift the upper housing and remove the protective shipping cardboard from the gear.
- 3 Note the serial # here: \_\_\_\_\_ and on the Warranty card included with this User Manual. The serial # is located at the inside of the upper housing under the bar code.



LW 15/25

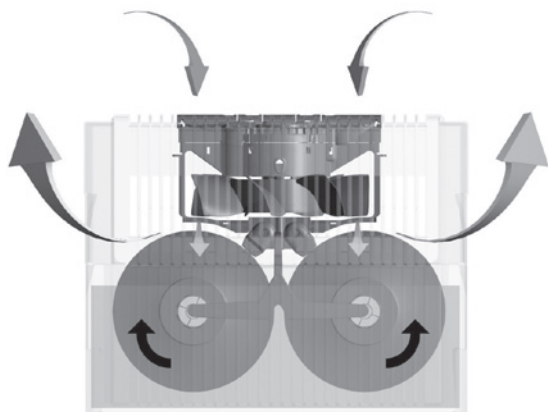


LW 45

- 4 Lift the disk stack(s) from the lower housing and remove the protective shipping cardboard.
- 5 Remove trial package containing 2 bottles of Venta Water Treatment Additive from Styrofoam packaging (LW 15/25: 1 package, LW 45: 2 packages).

## HOW DOES THE VENTA AIRWASHER IMPROVE YOUR DRY INDOOR AIR?

Dry air is drawn in through the top of the Venta Airwasher and passes over a rotating disk stack(s). Dirt and dust particles become heavy and sink to the bottom of the lower housing. Only humidified purified air will evaporate through the two (2) vented sides of the Venta Airwasher.



PATENT NO. 5,894,001

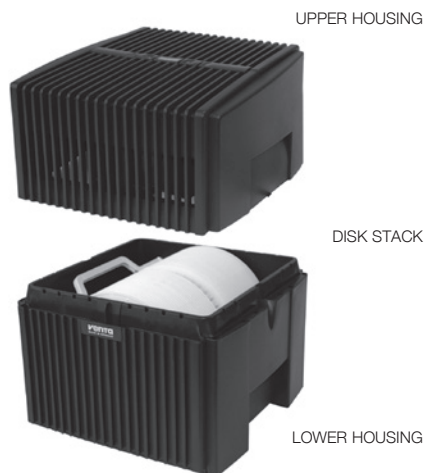
## BEFORE FIRST USE

- 1 Place the unit upright on a firm, flat surface. For proper air circulation make sure the vented sides are at least 18-20" clear of any wall. Do not block airflow inlets and outlets. Unrestricted airflow will result in the best efficiency and performance of your Venta Airwasher.
- 2 Inspect the switching power supply to insure it is free of damages.
- 3 Make sure the upper housing is removed from the lower housing.
- 4 Place disk stack(s) into lower housing.

- 5 Add fresh tap water. Fill water to the fill line located approximately one (1) inch below the top on the inside of the lower housing. You can transport the lower housing to your sink or tub – or you may fill the lower housing by carrying the water in a pitcher or watering can to the lower housing. Be careful when filling, cleaning, or moving the Venta Airwasher to avoid water spills.

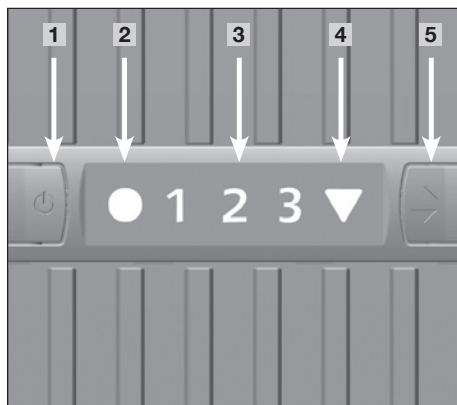
**Do not fill your Venta through the air intake holes on top of the upper housing.**

- 6 LW 15/25: Add the entire contents of one sample bottle of Water Treatment Additive.  
LW 45: Add the entire contents of both sample bottles of Water Treatment Additive.



- 7 Place upper housing properly on top of lower housing.
- 8 Plug switching power supply into standard 110-120 V AC outlet.
- 9 See "Daily Use and Operation" on page 7.

## OPERATOR PANEL



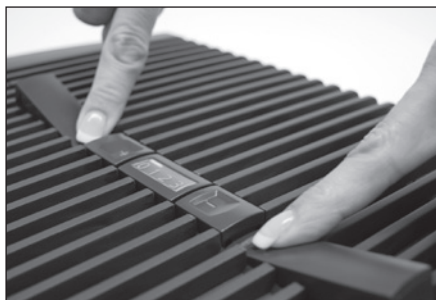
- 1** ON / OFF button
- 2** Operation indication ON / OFF  
Continuous lighting: ON  
No lighting: OFF  
Flashing: Fault (see Eliminating faults)
- 3** Fan stage display 1/2 (LW 15),  
1/2/3 (LW 25/45)
- 4** Automatic shut-off display  
(see "Automatic shut-off")
- 5** Fan stage selector button  
1/2 (LW 15), 1/2/3 (LW 25/45)

## DAILY USE AND OPERATION

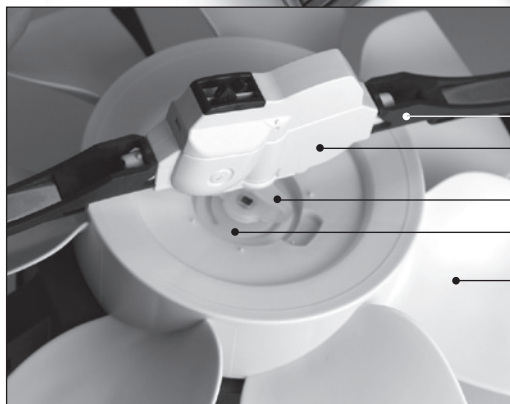
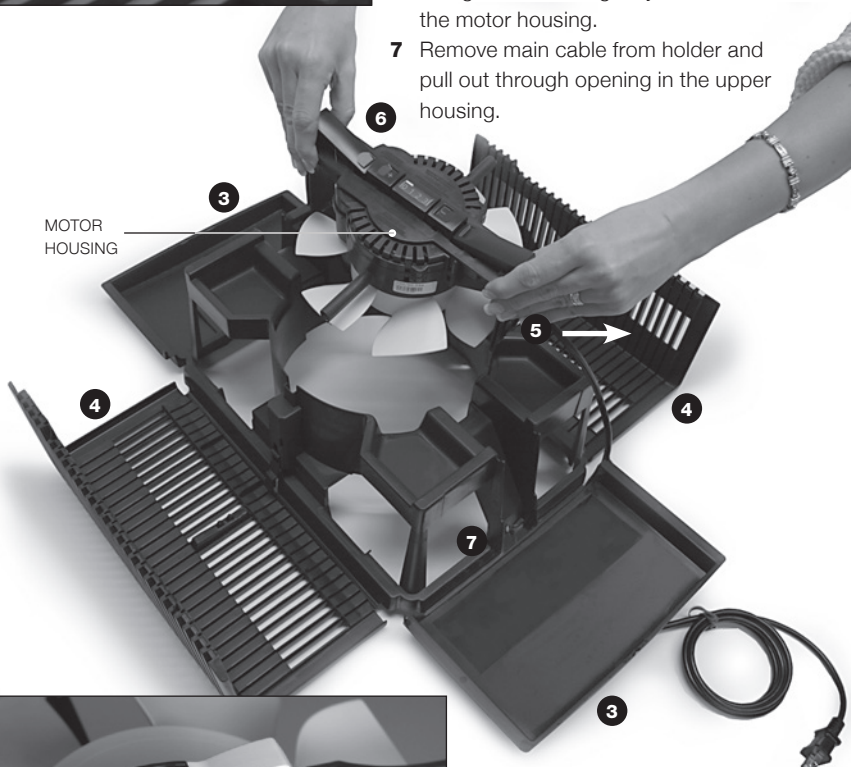
- Switch on the appliance with button **1**. The operation display **2** lights up. The fan rotates on its lowest setting.
- Select required fan stage 1/2 (LW 15), 1/2/3 (LW 25/45) with selector button **5**.
- To switch the appliance off press the button **1**. The operation display **2** stops lighting. Although the motor is shut off, the fan blades may continue to rotate for a short period of time.
- The Venta Airwasher has a built in, automatic safety shut off switch that is indicated by displaying **4**. As soon as the upper housing is lifted off the lower housing the motor shuts off even though the fan blades may continue to rotate for a short period of time.

## MAIN COMPONENTS OF THE VENTA AIRWASHER

### – EASY ACCESS FOR CLEANING



- 1 Switch the motor off and unplug the switching power supply.
- 2 To open upper housing unit for easy access to components, simultaneously press both tabs next to the speed controls; “One-Click Technology” unlocks the upper housing.
- 3 Lower the 2 short (solid) sides.
- 4 Lower the 2 long (vented) sides.
- 5 Remove main cable connector from drive unit.
- 6 Using both hands, gently lift out the motor housing.
- 7 Remove main cable from holder and pull out through opening in the upper housing.



- MOTOR HOUSING ARMS
- GEAR (SLIGHTLY DIFFERENT FOR LW 44 Plus)
- COUPLING
- LOCKING RING
- FAN BLADE



## MAINTENANCE AND CLEANING

### DAILY

FILL with fresh tap water.

### EVERY 10-14 DAYS

RINSE lower housing and disk stack(s) with warm water. Wipe lower housing and fan blade with soft cloth. RECHARGE with the recommended dose of Venta Water Treatment Additive and fresh tap water.

### TWICE A YEAR

CLEAN with ease. Use the Venta Cleaner periodically and the "one-click" technology to thoroughly clean the Venta Airwasher. See page 11 for instructions.

Or if you prefer, Venta Airwasher offers a professional factory cleaning service. Call us toll-free (888) 333 8218 for details.

### ANYTIME

Add 2-4 capfuls of our specially formulated fragrances to provide aromatherapy.

### TRANSPORTATION

**WARNING!** Always switch off the motor and unplug the switching power supply from the A/C outlet before moving the Venta Airwasher.

### STORAGE

We recommend a thorough cleaning of your Venta Airwasher before storing the unit. Please make sure that all components are clean and dry prior to storing. Do not leave water in the lower housing when storing. Water left in the Venta Airwasher may leave mineral deposits and allow microorganisms to grow. Repack your Venta Airwasher in its original packaging and store in a cool dry place.



TECHNICAL DATA	LW15	LW25	LW45
For rooms up to	200sq.ft. (10'x20')	400sq.ft. (20'x20')	800sq.ft.
Mains voltage	100-240V/50-60Hz	100-240V/50-60Hz	100-240V/50-60Hz
Disk surface	15.3 sq.ft.	22.5 sq. ft.	45 sq. ft.
Speeds	2	3	3
Sound level	22/32 dBA	24/34/44 dBA	24/35/45 dBA
Dimensions	10.2x11x12.2 in	11.8x11.8x13 in	17.7x11.8x13 in
Weight (empty)	approx. 7 lb.	approx. 8.5 lb.	approx. 13 lb.
Energy consumption (Speed 1 - 2 - 3)	approx. 3 - 4 watts	approx. 3 - 5 - 8 watts	approx. 3 - 5 - 8 watts
Water reservoir	1.4 gallons	2 gallons	3 gallons
Warranty	2 years	2 years	2 years

Extremely low power consumption. Above square feet is based off eight foot ceilings.

## VENTA WATER TREATMENT ADDITIVE (WTA)

### APPLICATIONS

Venta Water Treatment Additive is designed to maintain hygienic conditions in the lower housing and to improve the evaporation process. The use of WTA is recommended for the best performance and efficiency of your Venta Airwasher. Proper usage will help prevent the formation of hard calcium deposits. Simply rinse and wipe out any sediment when changing the water. WTA serves three (3) purposes:

- It improves Airwasher performance by creating a sheeting action on the disks with the effect of increasing the amount of surface area.
- It helps prevent calcium and lime build-up.

### DIRECTIONS

Fill lower housing with water daily. Approximately every 10-14 days (depending on individual air and water quality) add a dose of WTA. The lower housing should be periodically rinsed and cleaned approximately every 10-14 days. One dose of Water Treatment Additive is 3.5 fl. oz. equal to one black marking on the left hand side of the label.

### CAUTION! KEEP OUT OF REACH OF CHILDREN.

*EMERGENCY FIRST AID TREATMENT:* Eye and skin irritant. In the event of contact with eyes flush thoroughly with water. In the event of skin contact, rinse with water. Harmful if swallowed. Do not induce vomiting. Seek medical attention.

Venta Water Treatment Additive is recommended for use with Venta Airwasher humidifiers only. Shelf life when stored cool and away from sunlight: 2 years. After opening, use within 12 months.

WTA is not suitable for ultrasonic, heat vaporizing or atomizing type vaporizer humidifiers.

*CONTAINS:* Water, wetting agents, softening agents, and preservatives.

**WARNING!** Venta Water Treatment Additive is not intended to be used with detergents, cleaning agents and other chemicals. This will deactivate the additive. In the case where all water has evaporated, Venta Water Treatment Additive remains in the lower housing – it does not evaporate (like salt in sea water). Simply add more tap water and the WTA will activate.

## VENTA CLEANER

*Use every six (6) months or more frequently as needed.*

- 1** For thorough cleaning, fill lower housing with water, add the entire contents of the bottle and run the appliance on the lowest setting for approximately two (2) hours.
- 2** Empty lower housing and rinse disk stack(s) and lower housing with warm water.
- 3** Fill lower housing with water and add one dose of WTA.



### CAUTION! KEEP OUT OF REACH OF CHILDREN.

EMERGENCY FIRST AID TREATMENT: In the event of contact with eyes flush thoroughly with water. In the event of skin contact, rinse with water.

CONTAINS: Water and citric acid.

**WARNING!** Venta Cleaner is recommended for use with the Venta Airwasher only. Shelf life when stored cool and away from sunlight: 2 years. After opening, use within 12 months. Venta Cleaner is not suitable for ultrasonic, heat vaporizing or atomizing type vaporizer humidifiers.

Venta Cleaner is not intended to be used with detergents, cleaning agents, and other chemicals.

---

To purchase Venta Cleaner directly from Venta please shop online at [www.venta-airwasher.com](http://www.venta-airwasher.com) or call toll-free 1 (888) 333 8218. You may also contact us by email: [info@venta-usa.com](mailto:info@venta-usa.com)

## VENTA FRAGRANCES

Distinctive fragrance blends are specially formulated for your Venta Airwasher and are water soluble.

### DIRECTIONS:

Add 2-4 capfuls of fragrance directly to the water in the lower housing.

Effectiveness: Depending on room size, about 2-4 hours.



### CAUTION! KEEP OUT OF REACH OF CHILDREN.

### CAUTION!

**COMBUSTIBLE.** Keep away from flame or heat.

**EYE AND SKIN IRRITANT:** Avoid contact with eyes, skin, and clothing. Prolonged contact with skin may cause allergic reaction.

**DO NOT** ingest.

**FIRST AID TREATMENT:** If in eyes, immediately flush eyes with water; seek medical attention. If on skin, wash with soap and water. If swallowed, **DO NOT** induce vomiting. Rinse mouth with water and call physician or poison control center immediately.

**CONTAINS:** fragrance oils. Wash hands after handling.

---

To learn more about the fragrances or to purchase Venta Fragrances directly from Venta please shop online at [www.venta-airwasher.com](http://www.venta-airwasher.com) or call toll-free 1 (888) 333 8218. You may also contact us by email: [info@venta-usa.com](mailto:info@venta-usa.com).

### HELPFUL HINTS

- **Serial #:** You will find the serial number on the inside of the upper housing just below the bar code.
  - **Dishwashers:** The Venta Airwasher lower housing, disk stack(s) and upper housing (first remove motor housing from upper housing) can go into a dishwasher on the cool or rinse cycle. It is recommended that it not be washed with dishes. The motor housing cannot be submerged in water or placed in a dishwasher.
- DO NOT USE:** Detergent, mild soap, bleach, household cleaners.

- Cleaning of disk stacks – Soaking the disk stacks in hot water with Venta Cleaner or white vinegar for approx. 30 minutes will help loosen any buildup of calcium or lime. Always rinse with warm tap water after cleaning.
- Vinegar and Water Solution – either a 50:50 or a 3:1 ratio of white vinegar and water can be used instead of the Venta Cleaning Solution.
- Do not use the appliance in an environment with temperatures consistently over 95 degrees Fahrenheit.

## AUTOMATIC SHUT-OFF

The appliance has an automatic shut-off feature that is indicated by displaying **4**.

The appliance will shut off automatically if:	What to do
there is too little water in the lower housing.	Switch off appliance, disconnect switching power supply, top up with water and start operation again with button <b>1</b> . See also „Maintenance and cleaning“, „Daily“
the upper housing has been opened.	Close top cover again by pressing on the external ends of the latches. Switch the appliance on and off with button <b>1</b> .
the upper housing is not installed or is not properly fitted to the lower housing	Place top cover onto lower container. Switch the appliance on and off with button <b>1</b> .

## TROUBLESHOOTING

Problem	Possible causes	What to do
Appliance does not function	1. Switching power supply not connected 2. Mains cable connector not plugged and latched into drive unit.	1. Connect switching power supply to mains socket, switch on appliance with button <b>1</b> 2. Plug mains cable connector into drive unit until it latches.
Operation indication <b>2</b> flashes	Motor/Gearing malfunction	Please get in touch with Customer Service Tel. 1-888-333-8218

### PROBLEM: CLICKING NOISE

- Make sure the rubber coupling is inserted all the way into the gear.
- If a mineral deposit has formed inside the gear, this could cause a clicking sound during operation. Call our customer service department toll-free at (888) 333 8218 for a replacement.

### PROBLEM: WETNESS AROUND THE APPLIANCE

- Turn the empty lower housing upside down to dry. This will allow any excess water that collected between the double walls to empty out the weep holes. Allow at least 24 hours to dry.

### PROBLEM: DISK STACK NOT TURNING

- Check that the rubber coupling is properly inserted into the bottom of the gear.

## FREQUENTLY ASKED QUESTIONS

### **Dear Venta Airwasher Customer:**

We thank you for the confidence you have placed in the Venta Airwasher. We are convinced that you will appreciate your Venta Airwasher's trouble-free operation, its ease of cleaning and sturdy, simple technology. The following questions and answers will help you to fully understand the unique Venta Airwasher technology.

### **HOW DOES THE VENTA AIRWASHER HUMIDIFY?**

The Venta Airwasher operates by the process of cold evaporation; you will not see any white residue, vapors or mists. The disk stack rotates in the water creating a surface area of over 45 sq. ft. (LW 45). When dry air meets the surface area of the disk stack, the water evaporates and is sent out into the room. By using the cold evaporation process, any excess humidity can be virtually ruled out.

### **HOW DOES THE VENTA AIRWASHER PURIFY?**

Airborne particles, such as dust, pollen, and smoke are drawn in and passed over the rotating disk stack. The particles adhere to the wet disk stack and are pulled down into the water. Water evaporates; dirt and dust do not evaporate. The collected particles remain on the bottom of the lower housing and can be rinsed/wiped out at your convenience.

### **WHEN IS THE BEST TIME TO RUN THE VENTA AIRWASHER?**

That depends on individual needs. Because the Venta Airwasher is very energy efficient, operating costs are very low even when used all the time. For consistent results, it should be run continuously.

### **WHAT LEVEL OF HUMIDITY CAN BE EXPECTED AND HOW OFTEN SHOULD THE LOWER HOUSING BE FILLED?**

Under ideal conditions, a humidity level of 40-55% can be expected. Some factors effecting humidity level are: heating/cooling, home insulation, layout of the home, air circulation and amount of water in the appliance. For severely dry areas or during the first days of use, you may notice the water evaporates more quickly and/or a lower humidity level will be reached. The water level of the lower housing should be checked and topped off daily.

### **WHERE IS THE BEST PLACE FOR THE VENTA AIRWASHER?**

If possible the Venta Airwasher should be placed in the center of the room, or along a wall away from windows and a heat source. When using your Venta Airwasher for multiple rooms (larger model Venta-Airwashers) it should be placed centrally between rooms. Allow 18-20 inches above and on either side of the Venta Airwasher to allow air circulation.

### **WILL OPENING OUTSIDE DOORS AND WINDOWS AFFECT THE EFFICIENCY OF THE VENTA AIRWASHER?**

The appliance works best in closed rooms to maintain a consistent level of humidity – just as windows and outside doors are closed when the air conditioning is running! Doors between rooms may be left open to allow for air circulation.

### **IS IT NECESSARY TO USE THE VENTA WATER TREATMENT ADDITIVE?**

The water treatment additive helps prevent mineral deposits from becoming hard and difficult to remove – any sediment can be easily rinsed out. In addition, the water treatment additive helps improve the efficiency of the Venta Airwasher by allowing the water to sheet on the disk stack instead of “beading” up – allowing maximum use of every square inch of the disk stack. The water treatment additive also helps prevent odors and improves the performance of the Venta Airwasher.

## FREQUENTLY ASKED QUESTIONS

### WHAT HAPPENS IF THE WATER EVAPORATES AND THE APPLIANCE CONTINUES TO RUN?

First and foremost, the Venta Airwasher is only humidifying and purifying when water is in the appliance. However, the water treatment additive holds dirt and dust particles down on the bottom of the lower housing. The LW 15/25/45 will shut off automatically as soon as there is insufficient water in the lower housing.

### SHOULD MORE WATER TREATMENT ADDITIVE BE ADDED WHEN THE APPLIANCE HAS RUN DRY?

No, because the ingredients of the water treatment additive do not evaporate. Simply add fresh water to reactivate the water treatment additive. One dose will help keep the Venta Airwasher from scaling up with mineral deposits for 10 – 14 days.

### WHAT HAPPENS WHEN THE VENTA AIRWASHER HAS NOT BEEN RUN FOR AN EXTENDED PERIOD OF TIME?

Simply give the appliance a general cleaning with the Venta Cleaner before using the Venta Airwasher again. Tip: Use of the Venta Cleaner is recommended before storing the appliance for an extended period of time to remove any mineral deposits that can harden over time. Or take advantage of Venta Airwasher's Sonic Cleaning Services, call 1-888-333-8218 for details.

### WHAT IS THE BEST WAY TO CLEAN THE VENTA AIRWASHER?

Every 10 – 14 days the lower housing should be rinsed/wiped out with a damp sponge. The disk stack should be rinsed off and/or brushed off with a soft brush or sponge. Periodically, the Venta Cleaner can be used for a thorough cleaning. At all times care should be taken to keep water away from the motor. Please see user manual for more information.

### WHICH VENTA AIRWASHER IS RIGHT FOR ME?

Measure your room (length X width) and choose the corresponding Venta Airwasher (see technical data on brochure). For factors such as vaulted ceilings, rooms with fireplaces, desert conditions, higher heating temperatures, musical instruments, exotic plants or pets, we suggest going up one size to maintain ideal conditions.

### THE VENTA WATER TREATMENT ADDITIVE:

Designed to maintain conditions to improve the evaporation process. One bottle of 35 fl.oz. is sufficient for approximately five months. Recommended usage: every 10 - 14 days.

### THE VENTA CLEANER:

Designed to thoroughly clean the disk stack of your Venta Airwasher. Each bottle contains 8 fl. oz. and is sufficient for one cleaning. Recommended usage: once every six months.

### WHERE CAN I PURCHASE MORE VENTA WATER TREATMENT ADDITIVE AND OTHER VENTA PRODUCTS?

Venta products are available through participating retailers or directly from Venta Airwasher. Venta Airwasher Inc., US Headquarters, 300 N Elizabeth St., Suite 220B, Chicago, IL 60607. Toll Free: 1-888-333-8218, [www.venta-airwasher.com](http://www.venta-airwasher.com), e-mail: [info@venta-usa.com](mailto:info@venta-usa.com)

## MY VENTA AIRWASHER APPEARS TO NOT BE HUMIDIFYING MY ROOM AS DESIRED?

Our goal is to achieve 100% customer satisfaction. Initial product performance is largely based on room size and the overall humidity level of the contents within a room. Dry furnishings (textiles, leather, wood, books, etc.) will require a longer period of time to absorb moisture until their humidity level is increased to a satisfactory level. Therefore, we highly recommend that you take this into consideration when evaluating the performance of your product. Dry rooms can take up to one week of continuous adding of humidity to achieve an optimal humidity level. Important is that you are adding water to your unit regularly. In the event that you are dissatisfied with the performance of your product, please call us.

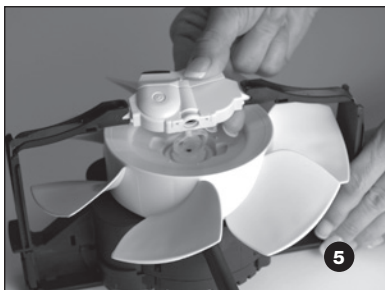
## SERVICING YOUR VENTA AIRWASHER

### CLEANING THE GEAR

Do not submerge the gear in water. To clean any buildup of calcium or lime from the gear "teeth", brush with a soft bristled brush. The gear teeth should be pointed toward the floor while brushing, otherwise deposits will fall into the gear and cause it to malfunction.

### REMOVAL OF GEAR AND COUPLING

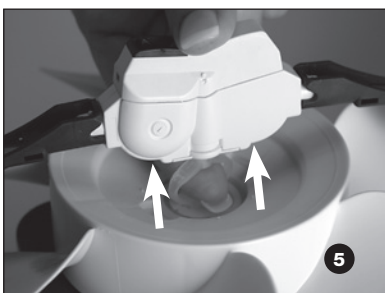
- 1 Switch the unit off.
- 2 Unplug the switching power supply from the A/C outlet.
- 3 Remove the motor housing from the upper housing.
- 4 Remove the coupling from the gear by pushing the coupling down toward the fan and away from the gear.
- 5 Pivot (turn) the gear 90 degrees so it is laying on its side.
- 6 Gently pull one of the two motor housing arms approximately 1/8 of an inch away from the gear and remove the gear from the motor housing.
- 7 Remove the locking ring from the center shaft of the fan by prying it up using a small screwdriver.





## REPLACEMENT OF GEAR AND COUPLING

- 1 Place the rubber coupling into the locking ring so the rubber feet from the coupling hang below the ring. When placing the coupling and ring on the center shaft of the fan the rubber feet should line up with the notch marks on the fan.
- 2 Snap the ring and coupling into place.
- 3 With the gear laying on its side place it between the motor housing arms that suspend it above the fan.
- 4 While placing the palms of your hands against the motor housing arms, apply slight pressure, and pivot the gear to the operating (upright) position. **Check that the locking knob (flange) is properly seated.** The locking knob, on either side of the gear, should fit tightly behind the ridge of the motor housing suspension arm.
- 5 Insert the rubber coupling into the bottom of the gear and push it up into the gear until it fits tight. On models with a small white pin, first insert the pin through the rubber coupling and then push both up into the gear until it fits tight. Check that this is properly seated by spinning the fan with your hand. The teeth in the gear should slowly move in and out.



## SERVICE OPTION: VENTA AIRWASHER

In case you prefer the factory to handle your concern, for warranty repair, or if you wish to utilize the factory cleaning service for your Venta Airwasher, please call our customer service department toll free at 1 (888) 333-8218 to obtain a Return Merchandise Authorization (RMA) number. Attach a tag to the product that includes your name, address, daytime phone number, and description of the problem. Include a copy of the original sales receipt and warranty card if not yet submitted. For products purchased in the United States, carefully package the product in its original packaging and send it either by UPS or Parcel Post with shipping and insurance prepaid to: Venta Airwasher Inc., US Headquarters, 300 N Elizabeth St., Suite 220B, Chicago, IL 60607.

## TWO (2) YEAR LIMITED WARRANTY



**CALL VENTA CUSTOMER SERVICE TO TROUBLESHOOT ANY ISSUES,  
BEFORE ATTEMPTING TO RETURN PRODUCT TO RETAILER.**

If you have any questions regarding this warranty please call 1-888-333-8218 or write to:

**Venta Airwasher Inc.**

US Headquarters  
300 N Elizabeth St.  
Suite 220B  
Chicago, IL 60607

For product registration please return the enclosed Warranty Card.

Venta warrants that for a period of two (2) years from the date of purchase, this product will be free from defects in material and workmanship. Venta, at its option will repair or replace this product or any component of the product found to be defective during the warranty period. Replacement will be made with a new or remanufactured product or component. If the product is no longer available, replacement may be made with a similar product of equal or greater value. This is your exclusive warranty. This warranty is valid for the original retail purchaser from the date of initial retail purchase and is not transferable. **Your warranty card must be completed and returned to activate your warranty. Also, keep the original sales receipt – proof of purchase is required to obtain warranty performance.**

This warranty does not cover normal wear of parts or damage resulting from any of the following: Negligent use or misuse of the product, use on improper voltage or current, use contrary to the operating instructions, disassembly, repair, or alteration by anyone other than Venta. Further, the warranty does not cover Acts of God, such as fire, flood, hurricanes, and tornadoes.

Venta shall not be liable for any incidental or consequential damages caused by the breach of any express or implied warranty. Except to the extent prohibited by applicable law, any implied warranty of merchantability or fitness for a particular purpose is limited in duration to the duration of the above warranty. Some states, provinces, or jurisdictions do not allow the exclusion or limitation of incidental or consequential damages or limitations on how long an implied warranty lasts, so the above limitations or exclusions may not apply to you. This warranty gives you specific legal rights, and you may also have other rights that vary from state to state.



## **CUSTOMER SERVICE:**

Venta Airwasher Inc.

US Headquarters

300 N Elizabeth St.

Suite 220B

Chicago, IL 60607

Toll Free: 1-888-333-8218

[www.venta-airwasher.com](http://www.venta-airwasher.com)

e-mail: [info@venta-usa.com](mailto:info@venta-usa.com)

**venta**<sup>®</sup>  
**AIRWASHER**  
*Das Original*