

What's New - SHOTS V4.6

Release Date: October, 2008

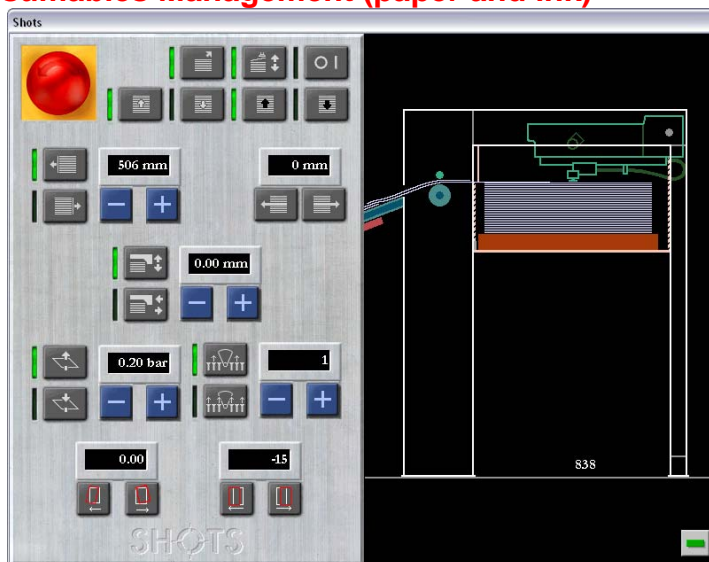
Version numbers and availability for operating systems

Product	Version	Win2000	WinXP	Vista*
SHOTS	4.6	X	X	X
SHOTS Connected	4.6_C	X	X	X

* VISTA SP1 required

New features

Consumables Management (paper and ink)



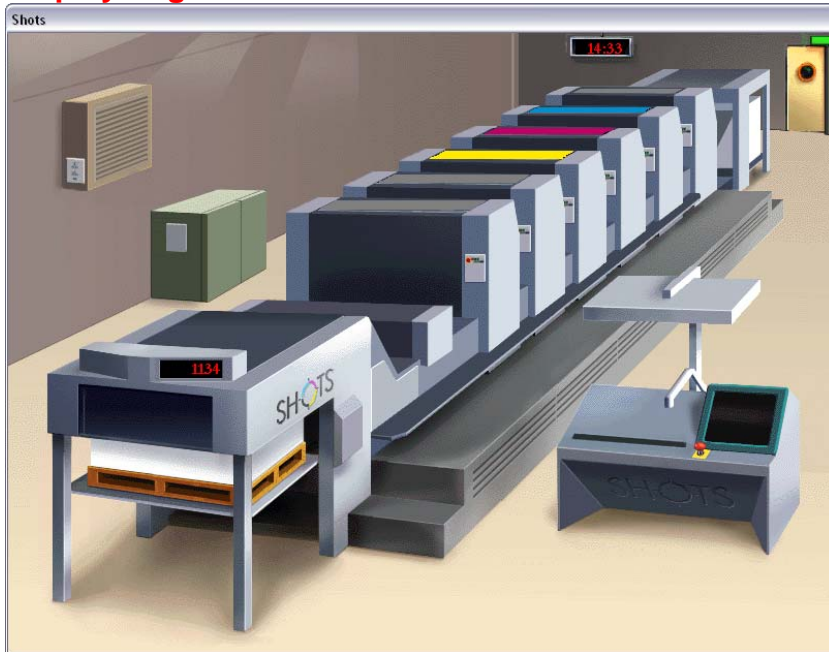
The counter indicates 838 sheets left in the input stack

Note : see how to add paper in the feeder in the user manual (manual or semi-automatic method).

When ink management is activated, it may be necessary to add ink with spatula to get the correct ink level and a good inking of the copy.

It's now possible to manage paper and ink in the press on a real time basis. These options can be set up in the Trainer module, in Context, Press Configuration (see the Trainer Manual for more details). A counter shows the number of sheets at the feeder and at the delivery unit.

Display of good and bad sheets



The counter at the delivery unit that used to show the press speed has been modified. It now displays the number of good copies (when in green) or the number of bad copies (when in red).

Here the press has run 1134 bad copies and is still not producing good ones

A new print fault: gloss problem

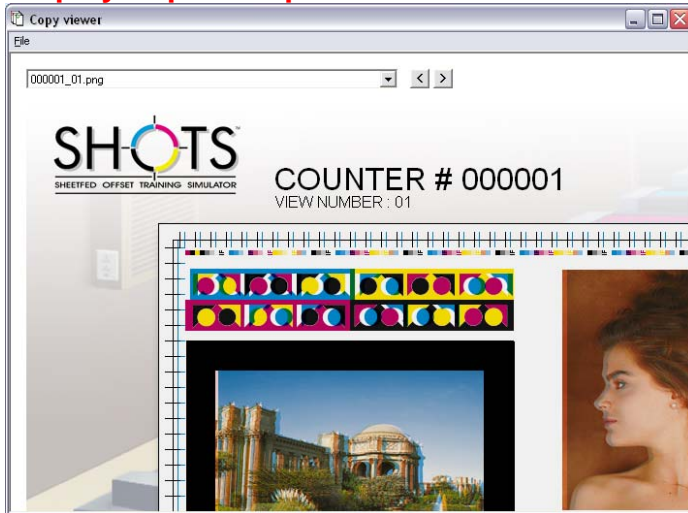
The gloss problems are now taken into account in the simulator as a fault. In case of a gloss problem, users are warned by the message: « PAY ATTENTION. Your print copy is bad... ». Remember that a Gloss meter is available in the SHOTS diagnostic toolbox!

New option for the Spectrophotometer

The spectrophotometer can now be used for synchronized or free measurements. In the first case (by default), the points measured on the current copy and the proof are identical. One click is enough to measure both.

When you select the free mode, the 2 points to be measured are defined by the user. They thus can be located on the same sheet.

Display of print copies off line



Example of a sheet in the Copy Viewer

From the Trace Editor, at the end of a session, you can see each copy taken by the student and go through it step by step. These copies can be printed out in A4 or A3 format depending on the printing machine used.

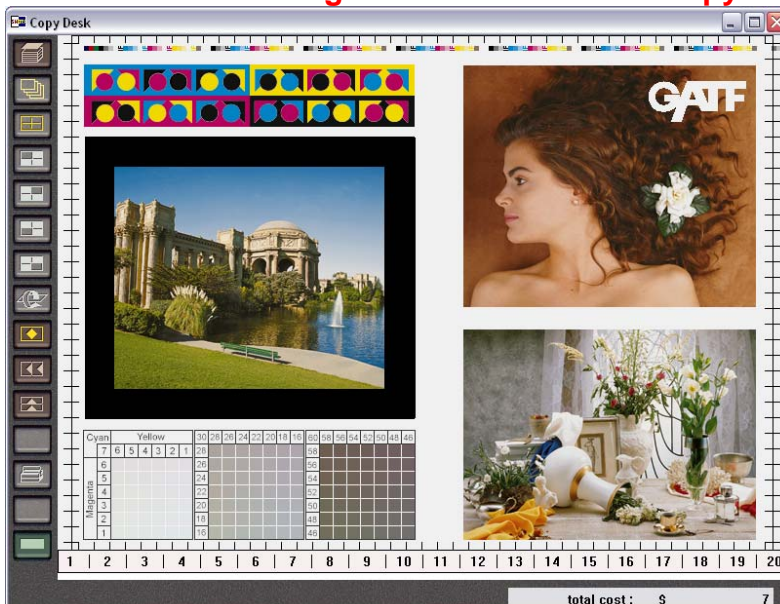
Deleting Student Traces

A password is now necessary to delete student traces in the Trace Editor.

Limiting the time spent on an exercise

In the Trainer Module, you can now determine a time span to do an exercise. You can decide the maximum time that can be spent on solving a problem.

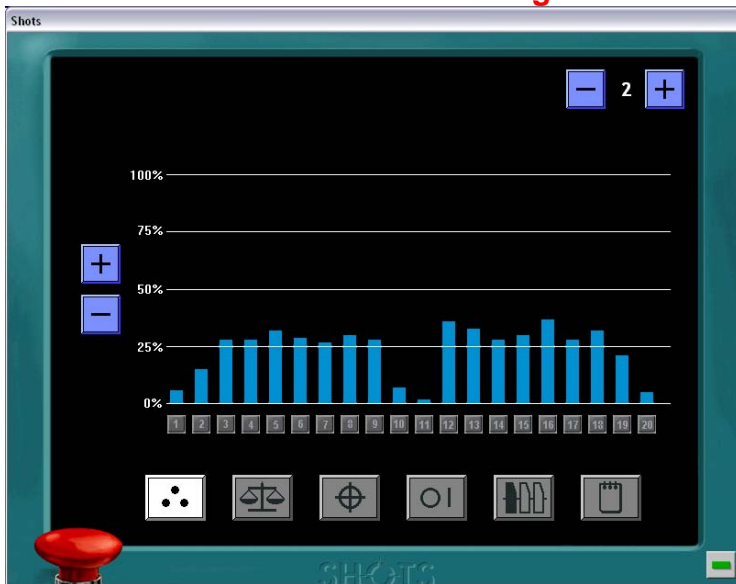
Ink screws numbering now visible on the « copydesk »



Ink screws numbers as seen in the « copydesk »

Ink screws numbering is now visible on the « copydesk » at all times whether in full or quarter views. It is thus easier to locate the ink screws to be adjusted when you deal with an inking problem

New interface for ink screws settings

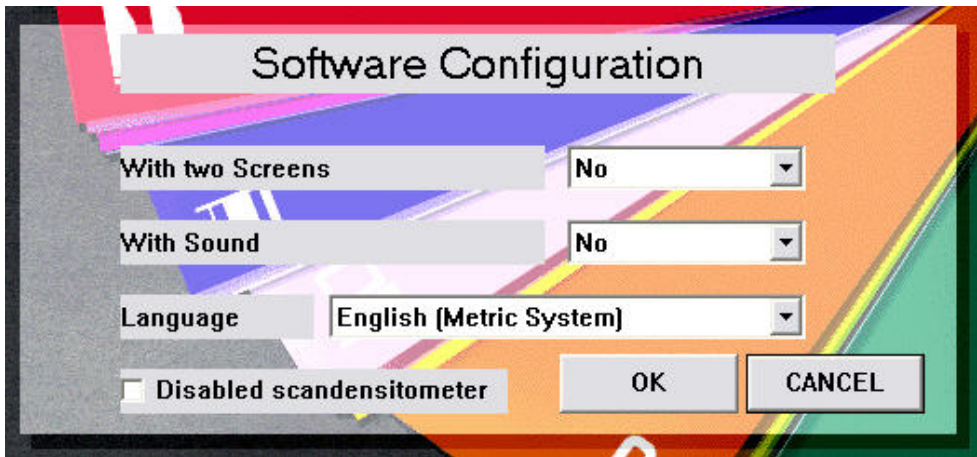


Ink screws settings have been simplified. You just need to select the ink screws and to click on + or – to make the ink levels adjustments.

New ink screw panel

Limiting the use of the scan densitometer

As requested by users, it's now possible to allow or forbid the use of the scan densitometer. This option is available when launching the software in Software Configuration.



Update of measure units for ink, dampening solution and varnish

Dampening Solution: change of conductivity unit (Micro Siemens instead of Micro ohms)

- Varnish: use of a 4 mm Ford cut to measure varnish viscosity. Reference value is between 30 and 60 seconds at 25°C.
- Standard ink: change of the viscosity reference value (150/300 poise- but keeping the same measure unit)
- Standard ink: change of the tack unit: grams/meter instead of TOS that was previously used.

Anomalies resolved in version 4.6

- Missing of information of production counter in trace report
- Shots used to crash when an exception was created using "emergency stop"
- Wrong tack "unit".
- Wrong ink viscosity unit
- The varnish viscosity was too high
- Wrong unit for conductivity
- No confirmation and password before deleting a trace file
- Print copy history not deleted with the trace report
- Simulator loses the connection with the copydesk
- The usage of the ink screw was too complex
- Begin time and End time had no effect on the SHOTS session
- Virtual time was using more copies than set
- Gloss problem print fault was not diagnosed by the simulator
- No value for the dampening level in the 6th unit
- No management of ink and paper
- Ink screw numbering not present on the copydesk
- No information about spectrophotometer or scanning densitometer activity in trace report
- Copydesk used to crash when you got a new copy while the manual densitometer was open