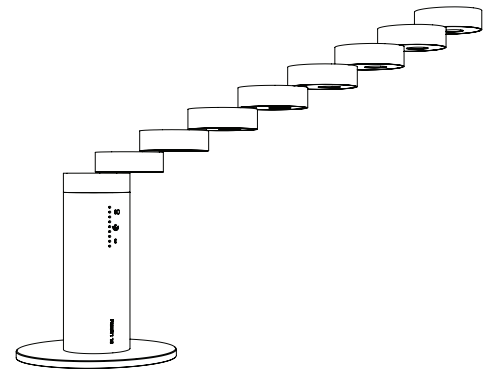
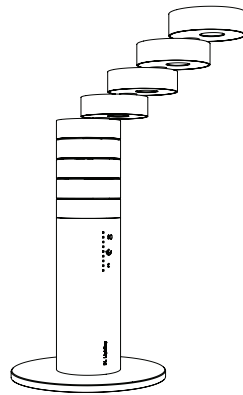
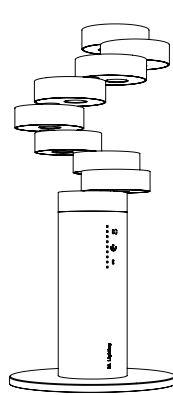
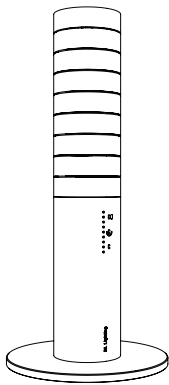


# slices™

LED DESK LAMP

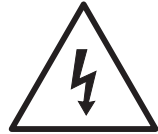


USER MANUAL

## Caution

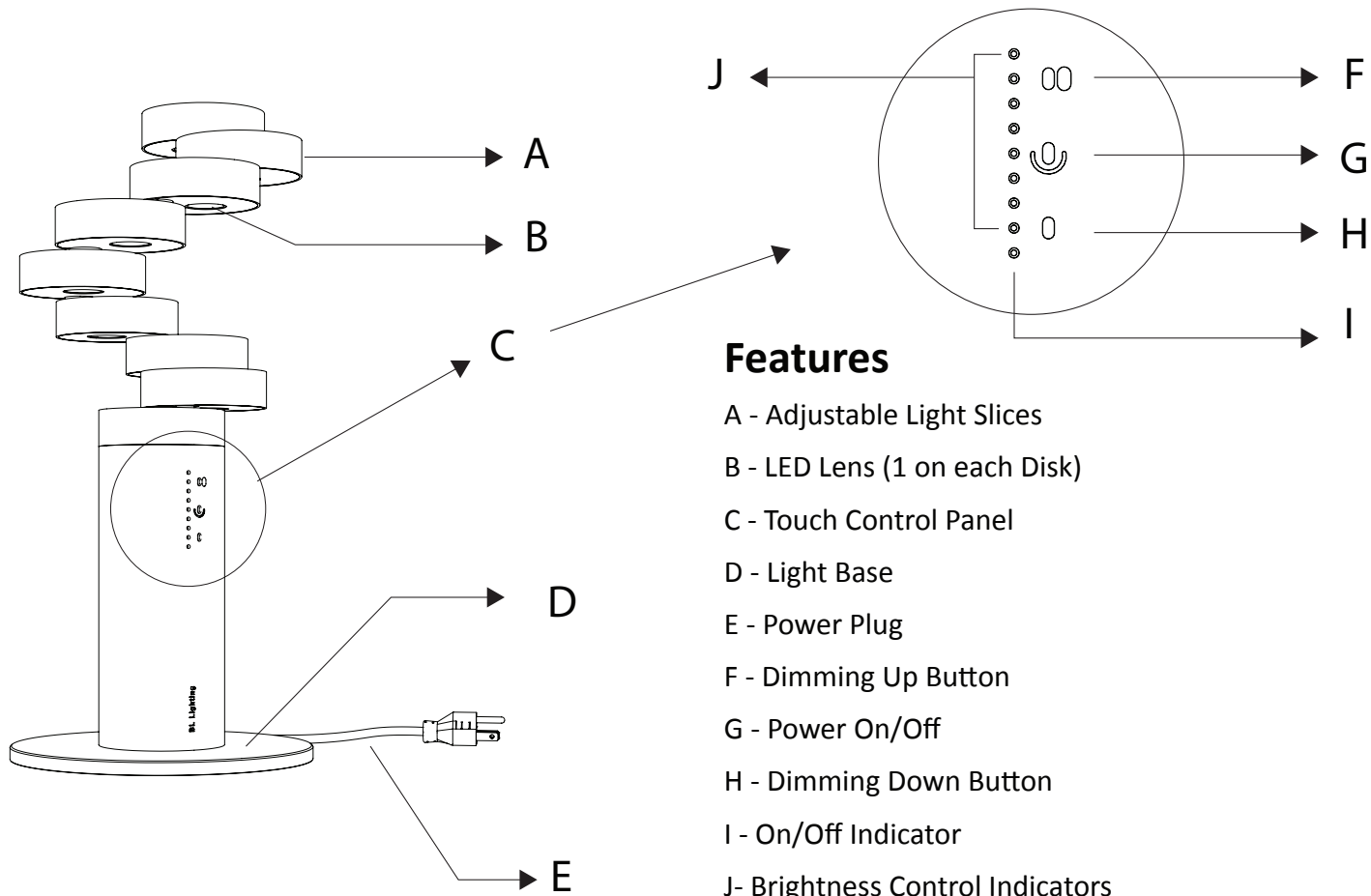


- Read these instructions carefully before using this lamp.
- For indoor use only.
- Do not handle the plug or appliance with wet hands.
- Be sure to keep the lamp in a dry area.
- Place the lamp on flat and secure surface.
- Protect the power cord from being walked on or pinched, particularly at plugs and the point where the power cord exits the lamp.
- Be sure to keep lamp away from any heat sources.
- Do not repair, disassemble or modify under any circumstances.
- Do not use solvents or cleaning solutions. Clean only with a soft damp cloth.



# Warning

- Be sure to turn off lamp and unplug before cleaning.
- Avoid looking directly at the lighted LED, as the bright light may cause eye damage.
- Never cover the lamp when it is on.
- Never use the lamp with frayed or damaged electrical cord.
- Carefully lift the lamp by holding it at the base and never at the upper slices. Slices™ is a pivoting lamp and the pivoting mechanics would be damaged if used for lifting. Lifting the wrong way could cause Slices™ to break apart and cause injury.



### Features

- A - Adjustable Light Slices
- B - LED Lens (1 on each Disk)
- C - Touch Control Panel
- D - Light Base
- E - Power Plug
- F - Dimming Up Button
- G - Power On/Off
- H - Dimming Down Button
- I - On/Off Indicator
- J- Brightness Control Indicators

## Specifications

Product	Slices™ LED Task/Desk Lamp
Model #	FP-DSLC-PA-0000-01-AL
Luminous Flux	1000-2100
Lumen per Watt	min. 60 LPW
CRI	min. 80
Input Voltage	120-277 VAC
Watt	25 W
CCT	3000-4000 K available in this range

Operating Temp.	5°- 40° C
Life Expectancy	50,000 hours
Dimension	Base ø: 8.34", Body ø: 3.5", Height: 18.15"
Weight	8 pounds
Patent Pending #	29455252
Designed and Manufactured in Portland, Oregon USA, by Beyond Limitations Lighting 5414 NE 148th Ave. Portland, OR, USA 97230 Tel: 503-408 3027 info@bl-lights.com   www.bl-lights.com	

# Operation

Slices™ is an adjustable, multi-pivoting lamp, offering custom lighting for any task. The multiple disks swivel to provide a natural interaction between the fixture and the user. Each LED disk has its own pivot point for rotation on lower disk when being outstretched or rotated.

1- Be sure to plug the lamp into a surge protector, as variations in voltage could damage the lamp's electrical components.

2- There are three sensors in the body of the lamp, used for controlling the brightness and initial programming. The lamp lights up when it is plugged in; and the top three On/Off indicators start blinking.

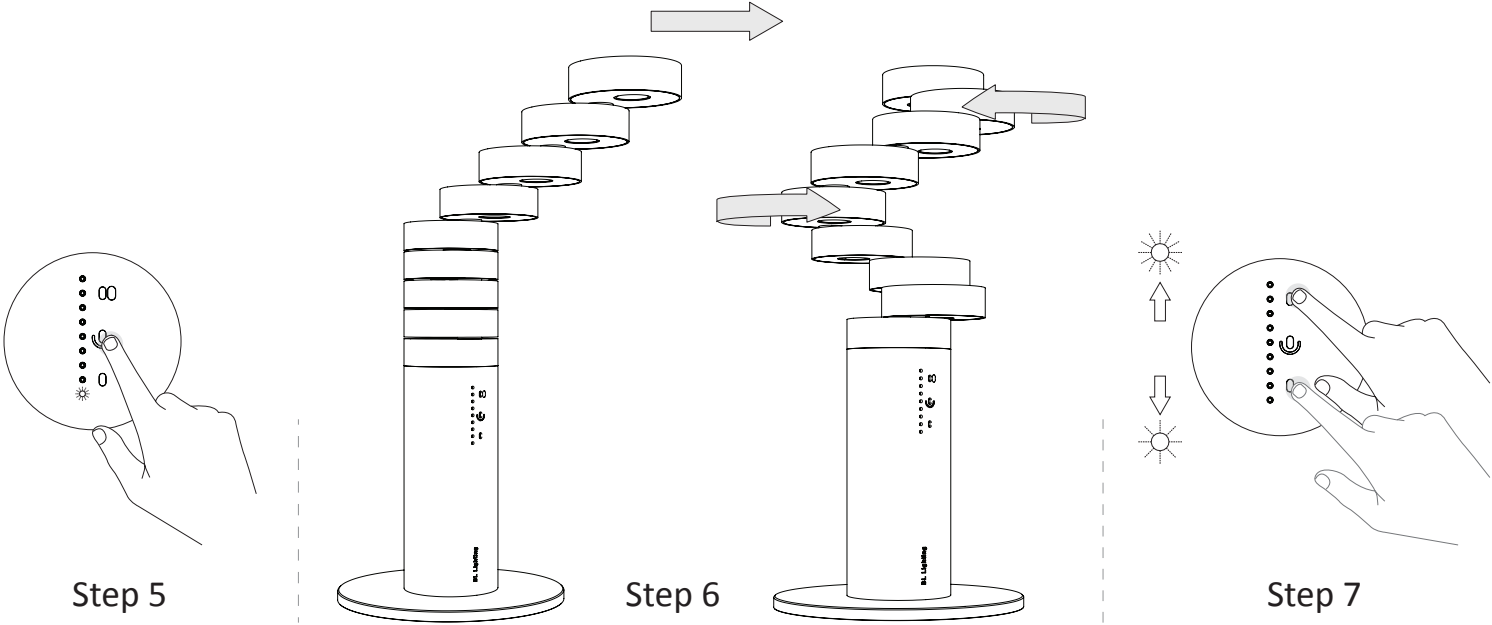
3- Place your finger on the dimming up button to stop the first blinking indicators. The next three indicators start blinking. Place your finger on the power On/Off button to stop the next three blinking indicators. The last three indicators start blinking. Place your finger on the dimming up button to stop the third blinking indicators.

4- The lamp is programmed. It is off now and all indicators are steady red. (In case you need to re-initiate the programming, place three fingers on all sensors to active programming mode)

5- Touch the On/Off power button to turn on the lamp. The On/Off indicator turns to green.

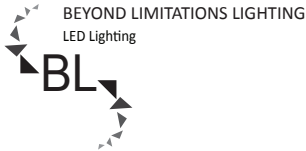
6- To adjust the shape of the lamp, pull out the upper disk to move the lower disks.

7- To adjust the brightness, simply touch the dimming levels button up/down. High and low brightness can be controlled by 8-step brightness indicators. With high brightness, indicators turn green, with low brightness, they turn amber.



## 3 Year Limited Warranty

This product is warranted by Beyond Limitations Lighting for defects in material and workmanship for a period of three years from date of purchase. Contact Beyond Limitations Lighting for return directions. Product must be returned to the manufacturing facility for repair and/or replacement along with proof of purchase. BL-Lights will repair or replace the original light with replacement parts if needed and return the lamp back to you. In case the lamp is not repairable, a replacement lamp will be shipped to you; this may be a refurbished lamp or a new lamp. This limited warranty does not cover postage, freight, handling, insurance or delivery fees. This warranty does not cover damage, defect or failure caused by/or resulting from accident, external destruction, alteration, modifications, abuse, misuse or misapplication of the product including fluctuating power levels.



BEYOND LIMITATIONS LIGHTING  
5414 NE 148th Ave. Portland, OR, USA 97230  
+1-503-408-3027  
info@bl-lights.com | www.bl-lights.com

Designed and Printed in USA.  
Copyright 2014 BL Lighting. All rights reserved.