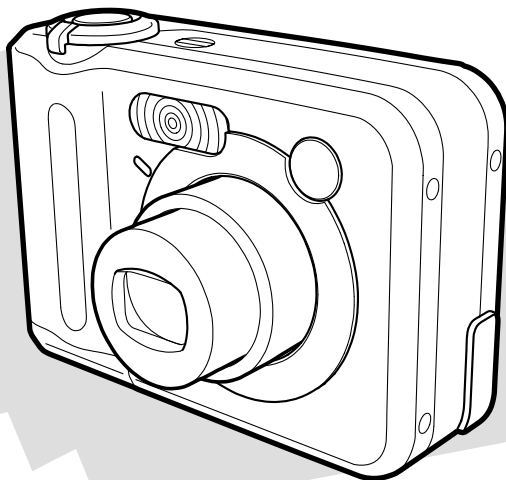


Digital Camera

E

QV-R40

User's Guide



Thank you for purchasing this CASIO Product. Before using it, be sure to read the precautions contained in this User's Guide, and keep the User's Guide in a safe place for future reference.

B
K864PCM1DKX

CASIO[®]

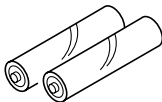
INTRODUCTION

Unpacking

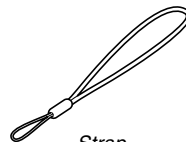
Check to make sure that all of the items shown below are included with your camera. If something is missing, contact your dealer as soon as possible.



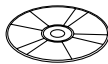
Camera



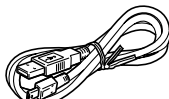
2 AA-size rechargeable
nickel-metal hydride
batteries (HR-3UA)



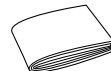
Strap



CD-ROM

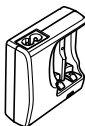


USB Cable

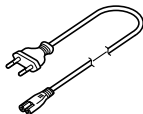


Basic Reference

- Note that the shape of the charger unit depends on the area where you purchased the camera.

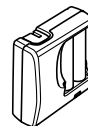


Charger Unit
(Inlet Type)



AC power cord *

* The shape of the AC
power cord plug varies
according to country or
geographic area.



Charger Unit
(Plug-in Type)

Contents

2 INTRODUCTION

| | |
|------------------------------|----|
| Unpacking | 2 |
| Features | 9 |
| Precautions | 11 |
| General Precautions | 11 |
| Data Error Precautions | 18 |
| Operating conditions | 18 |
| Condensation | 19 |
| Lens | 19 |
| Other | 20 |

21 QUICK START GUIDE

| | |
|--|----|
| First, charge the batteries! | 21 |
| To configure display language and clock settings | 22 |
| To record an image | 23 |
| To view a recorded image | 23 |
| To delete an image | 24 |

25 GETTING READY

| | |
|--|----|
| About This Manual | 25 |
| General Guide | 26 |
| Monitor Screen Contents | 28 |
| REC mode | 28 |
| PLAY mode | 30 |
| Changing the Contents of the Monitor Screen | 31 |
| Indicator Lamps | 31 |
| Attaching the Strap | 32 |
| Power Requirements | 32 |
| Charging Batteries | 33 |
| To load batteries | 37 |
| To remove the batteries from the camera | 38 |
| Using AC Power | 41 |
| Turning the Camera On and Off | 43 |
| Configuring Power Saving Settings | 44 |
| Using the On-screen Menu | 45 |
| Configuring Display Language and Clock Settings ... | 47 |
| To configure display language and clock settings | 48 |

INTRODUCTION

51 BASIC IMAGE RECORDING

| | |
|--|----|
| Recording an Image | 51 |
| Recording Precautions | 53 |
| About Auto Focus | 54 |
| About the REC Mode Monitor Screen | 54 |
| Using the Optical Viewfinder | 55 |
| Using Zoom | 55 |
| Optical Zoom | 55 |
| Digital Zoom | 56 |
| Using the Flash | 58 |
| Flash Unit Status | 59 |
| Changing the Flash Intensity Setting | 60 |
| Flash Precautions | 60 |
| Using the Self-timer | 61 |
| Specifying Image Size and Quality | 63 |
| To specify the image size | 63 |
| To specify image quality | 64 |

65 OTHER RECORDING FUNCTIONS

| | |
|--------------------------------|----|
| Selecting the Focus Mode | 65 |
| Using Auto Focus | 65 |
| Using the Macro Mode | 67 |
| Using the Infinity Mode | 67 |
| Using Manual Focus | 68 |
| Using Focus Lock | 69 |

| | |
|--|----|
| Exposure Compensation (EV Shift) | 70 |
| Adjusting White Balance | 71 |
| Adjusting White Balance Manually | 72 |
| Using the Best Shot Mode | 73 |
| Creating Your Own Best Shot Setup | 75 |
| Combining Shots of Two People into a Single Image (Coupling Shot) | 77 |
| Recording a Subject onto an Existing Background Image (Pre-shot) | 79 |
| Using the Movie Mode | 81 |
| Using the Histogram | 82 |
| REC Mode Camera Settings | 84 |
| Specifying ISO Sensitivity | 84 |
| Selecting the Metering Mode | 85 |
| Using the Filter Function | 86 |
| Specifying Color Saturation | 86 |
| Specifying Contrast | 87 |
| Specifying Outline Sharpness | 87 |
| Turning the On-screen Grid On and Off | 88 |
| Turning Image Review On and Off | 88 |
| Assigning Functions to the [◀] and [▶] Keys | 89 |
| Specifying Power On Default Settings | 90 |
| Resetting the Camera | 91 |

92 PLAYBACK

| | |
|--|-----|
| Basic Playback Operation | 92 |
| Zooming the Display Image | 93 |
| Resizing an Image | 94 |
| Cropping an Image | 95 |
| Playing a Movie | 96 |
| Displaying the 9-image View | 97 |
| Selecting a Specific Image in the 9-image View | 98 |
| Displaying the Calendar Screen | 98 |
| Rotating the Display Image | 99 |
| Using Image Roulette | 100 |

102 DELETING FILES

| | |
|------------------------------|-----|
| Deleting a Single File | 102 |
| Deleting All Files | 103 |

104 FILE MANAGEMENT

| | |
|--|-----|
| Folders | 104 |
| Memory Folders and Files | 104 |
| Protecting Files | 105 |
| To protect a single file | 105 |
| To protect all files in memory | 106 |
| DPOF | 106 |
| To configure print settings for a single image | 107 |
| To configure print settings for all images | 108 |
| PRINT Image Matching II | 109 |
| Exif Print | 109 |
| Using USB DIRECT-PRINT | 110 |
| Using the FAVORITE Folder | 112 |
| To copy a file to the FAVORITE folder | 112 |
| To display a file in the FAVORITE folder | 114 |
| To delete a file from the FAVORITE folder | 115 |
| To delete all files from the FAVORITE folder | 116 |

117 OTHER SETTINGS

| | |
|---|-----|
| Specifying the File Name Serial Number Generation Method | 117 |
| Turning the Key Tone On and Off | 118 |
| Specifying an Image for the Startup Screen | 118 |
| Configuring Power Down Image Settings | 119 |
| Using the Alarm | 121 |
| To set an alarm | 121 |
| Stopping the Alarm | 122 |
| Setting the Clock | 123 |
| To select your Home Time zone | 123 |
| To set the current time and date | 124 |
| Changing the Date Format | 124 |
| Using World Time | 125 |
| To display the World Time screen | 125 |
| To configure World Time settings | 125 |
| To configure summer time (DST) settings | 126 |
| Changing the Display Language | 127 |
| Formatting Built-in Memory | 128 |

129 USING A MEMORY CARD

| | |
|--|-----|
| Using a Memory Card | 130 |
| To insert a memory card into the camera | 130 |
| To remove a memory card from the camera | 130 |
| Formatting a Memory Card | 131 |
| Memory Card Precautions | 132 |
| Copying Files | 133 |
| To copy all the files in built-in memory to a memory card | 133 |
| To copy a file from a memory card to built-in memory | 134 |

135 VIEWING IMAGES ON A COMPUTER

| | |
|---|-----|
| Using the Camera with a Windows Computer | 135 |
| USB Connection Precautions | 140 |
| Using the Camera with a Macintosh Computer | 140 |
| USB Connection Precautions | 143 |
| Operations You Can Perform from Your Computer .. | 144 |
| Using a Memory Card to Transfer Images to a Computer | 144 |
| Memory Data | 145 |
| DCF Protocol | 145 |
| Memory Directory Structure | 146 |
| Image Files Supported by the Camera | 147 |
| Built-in Memory and Memory Card Precautions | 147 |

148 USING THE CAMERA WITH A COMPUTER

| | |
|---|-----|
| Using the Album Feature | 148 |
| Creating an album | 148 |
| Selecting an Album Layout | 149 |
| Configuring Detailed Album Settings | 150 |
| Viewing Album Files | 152 |
| Saving an Album | 155 |
| Installing the Software from the CD-ROM | 155 |
| About the bundled CD-ROM | 155 |
| Computer System Requirements | 156 |
| Installing Software from the CD-ROM in Windows ... | 157 |
| Getting Started | 157 |
| Selecting a Language | 157 |
| Viewing the Contents of the "Read me" File | 158 |
| Installing an Application | 158 |
| Viewing User Documentation (PDF Files) | 159 |
| User Registration | 159 |
| Exiting the Menu Application | 159 |
| Installing Software from the CD-ROM on a Macintosh | 160 |
| Installing Software | 160 |
| Viewing User Documentation (PDF Files) | 161 |

162 APPENDIX

| | |
|--------------------------------|-----|
| Menu Reference | 162 |
| Indicator Lamp Reference | 164 |
| REC mode | 165 |
| PLAY mode | 166 |
| Charger Unit | 166 |
| Troubleshooting Guide | 167 |
| Display Messages | 170 |
| Specifications | 171 |
| Main Specifications | 171 |

»» IMPORTANT! ««

- The contents of this manual are subject to change without notice.
- CASIO COMPUTER CO., LTD. assumes no responsibility for any damage or loss resulting from the use of this manual.
- CASIO COMPUTER CO., LTD. assumes no responsibility for any loss or claims by third parties which may arise through the use of the QV-R40.
- CASIO COMPUTER CO., LTD. shall not be held liable for any damages or losses suffered by you or any third party due to the use of Photo Loader and/or Photohands.
- CASIO COMPUTER CO., LTD. assumes no responsibility for any damage or loss caused by deletion of data as a result of malfunction, repairs, or battery replacement. Be sure to back up all important data on other media to protect against its loss.
- *The SD logo is a registered trademark.*
- *Windows, Internet Explorer, and DirectX are registered trademarks of Microsoft Corporation.*
- *Macintosh is a registered trademark of Apple Computer, Inc.*
- *MultiMediaCard is a trademark of Infineon Technologies AG of Germany, and licensed to the MultiMediaCard Association (MMCA).*
- *Acrobat and Acrobat Reader are trademarks of Adobe Systems Incorporated.*

- *The USB driver (mass storage) uses Phoenix Technologies Ltd. software.
Compatibility Software Copyright © 1997
Phoenix Technologies Ltd., All Rights Reserved.*
- *Other company, product and service names used herein may also be trademarks or service marks of others.*
- *Photo Loader and Photohands are the property of CASIO COMPUTER CO., LTD. Except as stipulated above, all copyrights and other related rights to these applications revert to CASIO COMPUTER CO., LTD.*

■ Copyright Restrictions

Except for the purposes of your own personal enjoyment, unauthorized copying of snapshot files and movie files violates copyright laws and international contracts. Distribution to third parties of such files over the Internet without permission of the copyright holder, whether for profit or for free, violates copyright laws and international contracts.

Features

- **4.0 million Effective Pixels**
A high-resolution megapixel CCD provides 4.0 million effective pixels (4.13 million total pixels) for images that print beautifully.
- **1.6-inch TFT color LCD monitor screen**
- **9.6X seamless zoom**
3X optical zoom, 3.2X digital zoom
- **10MB Flash memory**
Images can be recorded without using a memory card.
- **Support for SD memory cards and MMC (MultiMedia Cards) for memory expansion**
- **Easy Image Transfer**
Transfer images to a computer simply by connecting the camera with a USB cable.
- **Best Shot**
Simply select the sample scene that matches the type of image you are trying to record and the camera performs troublesome setups automatically for beautiful pictures every time.
- **Coupling Shot and Pre-shot**
Coupling Shot lets you combine two subjects into a single image, while Pre-shot lets you add a subject to a previously recorded background image. This means you can create images that include you and your friend, even if you are the only two people around. You can use Coupling Shot and Pre-shot by selecting the applicable sample images in the Best Shot mode.
- **Image Roulette Feature**
Images cycle like a slot machine on the display until one of them remains.
- **Triple Self-timer mode**
The self-timer can be set up to repeat three times, automatically.
- **Real-time histogram**
An on-screen histogram lets you adjust exposure as you view the effect on overall image brightness, which makes shooting under difficult lighting conditions easier than ever before.
- **World Time**
A simple operation sets the current time for your current location. You can select from among 162 cities in 32 time zones.

INTRODUCTION

- **Alarm**
A built-in alarm helps to keep you on time for important events, and even can be used in place of an alarm clock. You can also have a specific image appear on the monitor screen when the alarm time is reached.
- **Album Function**
HTML files are generated automatically to create an album of recorded images. Album contents can be viewed and printed using a standard Web browser. Images can also be incorporated into Web pages quickly and easily.
- **Calendar screen**
A simple operation displays a full-month calendar on the camera's monitor screen. Each day of the full-month calendar shows a thumbnail of the first image recorded for that date, which helps to make searching for a particular image quicker and easier.
- **DCF Data Storage**
DCF (Design rule for Camera File system) data storage protocol provides image inter-compatibility between the digital camera and printers.
- **Digital Print Order Format (DPOF)**
Images can be printed easily in the sequence you want using a DPOF compatible printer. DPOF can also be used when specifying images and quantities for printing by professional print services.
- **PRINT Image Matching II Compatible**
Images include PRINT Image Matching II data (mode setting and other camera setup information). A printer that supports PRINT Image Matching II reads this data and adjusts the printed image accordingly, so your images come out just the way you intended when you recorded them.
- **USB DIRECT-PRINT support**
Your camera supports USB DIRECT-PRINT, which was developed by Seiko Epson Corporation. When connected directly to a printer that supports USB DIRECT-PRINT, you can select images to print and start the print operation directly from the camera.
- **Bundled with Photo Loader and Photohands**
Your camera comes bundled with Photo Loader, the popular application that automatically loads images from your camera to your PC. It also comes with Photohands, and application that makes image retouching quick and easy.

Precautions

General Precautions

Be sure to observe the following important precautions whenever using the QV-R40. All references in this manual to “this camera” and “the camera” refer to the CASIO QV-R40 Digital Camera.

■ Avoid Use While In Motion

- Never use the camera to record or play back images while operating an automobile or other vehicle, or while walking. Looking at the monitor while in motion creates the risk of serious accident.

■ Directly Viewing the Sun or Bright Light

- Never look at the sun or any other bright light through the camera’s viewfinder. Doing so can damage your eyesight.

■ Flash

- Never use the flash unit in areas where flammable or explosive gas may be present. Such conditions create the risk of fire and explosion.
- Never fire the flash in the direction of a person operating a motor vehicle. Doing so can interfere with the driver’s vision and creates the risk of accident.
- Never fire the flash too close to the eyes of the subject. Doing so creates the risk of loss of eyesight.

■ Display Panel

- Do not apply strong pressure to the LCD panel surface or subject it to strong impact. Doing so can cause the display panel glass to crack.
- Should the display panel ever become cracked, never touch any of the liquid inside the panel. Doing so creates the risk of skin inflammation.
- Should display panel liquid ever get into your mouth, immediately rinse your mouth out and contact your physician.
- Should display panel liquid ever get into your eyes or onto your skin, immediately rinse with clean water for at least 15 minutes and contact your physician.

■ Connections

- Never plug any devices that are not specified for use with this camera into connectors. Connecting a non-specified device creates the risk of fire and electric shock.

■ Transport

- Never operate the camera inside of an aircraft or anywhere else where operation of such devices is restricted. Improper use creates the risk of serious accident.

■ Smoke, abnormal odor, overheating, and other abnormalities

- Continued use of the camera while it is emitting smoke or strange odor, or overheating creates the risk of fire and electric shock. Immediately perform the following steps whenever any of the above symptoms are present.
 1. Turn off the camera.
 2. If you are using the AC adaptor to power the camera, unplug it from the wall outlet. If you are using battery power, remove the batteries from the camera, taking care to protect yourself against burn injury.
 3. Contact your dealer or nearest CASIO authorized service center.

■ Water and Foreign Matter

- Water, other liquids, or foreign matter (especially metal) getting inside the camera creates the risk of fire and electric shock. Immediately perform the following steps whenever any of the above symptoms are present. Particular care is required when using the camera where it is raining or snowing, near the ocean or other body of water, or in a bathroom.
 1. Turn off the camera.
 2. If you are using the AC adaptor to power the camera, unplug it from the wall outlet. If you are using battery power, remove the batteries from the camera.
 3. Contact your dealer or nearest CASIO authorized service center.

■ Dropping and Rough Treatment

- Continued use of the camera after it is damaged by dropping or other rough treatment creates the risk of fire and electric shock. Immediately perform the following steps whenever any of the above symptoms are present.
 1. Turn off the camera.
 2. If you are using the AC adaptor to power the camera, unplug it from the wall outlet. If you are using battery power, remove the batteries from the camera.
 3. Contact your dealer or nearest CASIO authorized service center.

■ Keep Away From Fire

- Never expose the camera to fire, which can cause it to explode and creates the risk of fire and electric shock.

■ Disassembly and Modification

- Never try to take the camera apart or modify it in any way. Doing so creates the risk of electric shock, burn injury, and other personal injury. Be sure to leave all internal inspection, maintenance, and repair up to your dealer or nearest CASIO authorized service center.

■ Locations To Be Avoided

- Never leave the camera in any of the following types of locations. Doing so creates the risk of fire and electric shock.
 - Areas subject to large amounts of humidity or dust
 - Food preparation areas or other locations where oil smoke is present
 - Near heaters, on a heated carpet, in areas exposed to direct sunlight, in a closed vehicle parked in the sun, or other areas subject to very high temperatures
- Never place the camera on an unstable surface, on a high shelf, etc. Doing so can cause the camera to fall, creating the risk of personal injury.

■ Backing Up Important Data

- Always keep backup copies of important data in camera memory by transferring it to a computer or other storage device. Note that data can be deleted in the case of camera malfunction, repair, etc.

■ Memory Protection

- Whenever replacing batteries, be sure to follow the correct procedure as described in the documentation that comes with the camera. Incorrectly replacing batteries can result in corruption or loss of data in camera memory.

■ Batteries

- Misuse of batteries can cause them to leak, which damages and corrodes the area around the batteries and creates the danger of fire and personal injury. Make sure you observe the following precautions when using batteries.
 - Never try to take batteries apart and never allow them to become shorted.
 - Do not expose batteries to heat or fire.
 - Never mix new batteries with old ones.
 - Never mix batteries of different types.
 - Do not charge non-rechargeable batteries.
 - When loading batteries, make sure their positive (+) and negative (–) ends are facing correctly.
 - When using rechargeable batteries, be sure to read the Safety Precautions section of the user documentation that comes with them.
 - Use only the batteries that are specified for this camera.
 - If you do not plan to use the camera for a long time, remove its batteries.

■ Alkaline Batteries

- Should liquid from an alkaline battery ever get into your eyes, take the following steps.
 1. Immediately rinse your eyes with clean water. Do not rub!
 2. See a physician as soon as possible.

Failure to clean alkaline battery fluid from the eyes creates the risk of loss of sight.

■ Rechargeable Batteries

- Should you ever notice leakage, strange odor, heat generation, discoloration, deformation, or any other abnormal condition while using, charging, or storing batteries, immediately remove them from the camera or the battery charger unit and keep them away from open flame.
- The term “battery” in this manual refers to the rechargeable nickel-metal hydride batteries.
- The term “charger unit” in the following precautions refers to the CASIO BC-5H Charger Unit.

INTRODUCTION

- Failure to observe any of the following precautions while using batteries creates the risk of overheating, fire, and explosion.
 - Never use any other type of charger unit except the one specified for the batteries.
 - Never try to use batteries to power any other device other than this camera.
 - Never use or leave batteries near open flame.
 - Never place batteries in a microwave oven, throw it into fire, or otherwise expose it to intense heat.
 - Make sure batteries are oriented correctly when you load them into the camera or attach them to the charger unit.
 - Never carry or store batteries together with items that can conduct electricity (necklaces, pencil lead, etc.).
 - Never try to take batteries apart, modify them in any way, or expose them to strong impact.
 - Do not immerse batteries in fresh water or salt water.
 - Do not use or leave batteries under direct sunlight, in an automobile parked in the sun, or in any other area subject to high temperatures.
- If the batteries do not achieve full charge after the normal charging time has passed, stop charging. Continued charging creates the risk of overheating, fire, and explosion.
- Battery fluid can damage your eyes. Should battery fluid get into your eyes accidentally, immediately rinse them with clean tap water and then consult a physician.
- If batteries are to be used by young children, make sure that a responsible adult makes them aware of the precautions and proper handling instructions, and make sure that they handle batteries correctly.
- Should fluid from batteries accidentally get onto clothing or your skin, immediately rinse it off with clean tap water. Prolonged contact with battery fluid can cause skin irritation.

■ Charger Unit

- Never plug the charger unit into an outlet whose voltage rating is different from that marked on the charger unit. Doing so creates the risk of fire, malfunction, and electric shock.
- Never plug in or unplug the charger unit while your hands are wet. Doing so creates the risk of electric shock.
- Do not plug the charger unit into an outlet or extension cord that is shared by other devices. Doing so creates the risk of fire, malfunction, and electric shock.
- The charger unit becomes slightly warm during charging. This is normal and does not indicate malfunction.
- Unplug the charger unit from the power outlet whenever you are not using it.

■ AC Adaptor (Option)

- Misuse of the optional AC adaptor creates the risk of fire and electric shock. Make sure you observe the following precautions when using the AC adaptor.
 - Use only the optional AC adaptor specified for this camera.
 - Use a 100 to 240V AC (50/60Hz) wall outlet as a power source.
 - Never plug the power cord into a wall outlet that is shared by other devices, or into a shared extension cord.
- Misuse of the AC adaptor can cause it to become damaged, creating the risk of fire and electric shock. Make sure you observe the following precautions when using the AC adaptor.
 - Never place heavy objects on the AC adaptor or subject it to direct heat.
 - Never try to modify the AC adaptor or subject it to bending.
 - Do not twist or pull on the power cord.
 - Should the power cord or plug ever become damaged, contact your dealer or nearest CASIO authorized service center.
- Use the AC adaptor where it will not be splashed with water. Water creates the risk of fire and electric shock.
- Do not place a vase or any other container filled with liquid on top of the AC adaptor. Water creates the risk of fire and electric shock.

INTRODUCTION

- Never touch the AC adaptor while your hands are wet. Doing so creates the risk of electric shock.
- Misuse of the optional AC adaptor creates the risk of fire and electric shock. Make sure you observe the following precautions when using the AC adaptor.
 - Never locate the power cord near a stove or other heating device.
 - When unplugging from the wall outlet, grasp the plug on the AC adaptor power cord. Never pull on the power cord.
 - Insert the plug into the wall outlet as far as it will go.
 - Unplug the AC adaptor from the wall outlet before leaving the camera unattended for long periods, such as when leaving on a trip, etc.
 - At least once a year, unplug the AC adaptor from the wall outlet and clean off any dust built up around the prongs.

»» IMPORTANT! ««

■ Battery Life

- The battery lives noted in the User's Guide are approximate values until power fails, based on use of batteries of recommended brands at normal temperature (23°C (73°F)), and do not guarantee you will be able to achieve operation for the life noted. Actual battery life is greatly affected by the battery brand, battery production date, and ambient temperature.
- Leaving the camera on can run down batteries and cause the low battery warning to appear. Turn off the camera whenever you are not using it.
- Sometimes, the camera may shutdown after the low battery warning appears. If this happens, immediately replace both of the batteries. Leaving low or dead batteries in the camera can lead to battery leakage and data corruption.
- Though you could use alkaline batteries when there are no other types of batteries available, note that the life of alkaline batteries will be very short. Use of rechargeable nickel-metal hydride batteries or lithium batteries is recommended.

Data Error Precautions

- Your digital camera is manufactured using precision digital components. Any of the following creates the risk of corruption of data in file memory.
 - Removing the batteries or memory card from the camera, or connecting the USB cable to the camera while the camera is performing a record or memory access operation
 - Removing the batteries or memory card from the camera, or connecting the USB cable to the camera while the operation lamp is still flashing after you turn off the camera
 - Disconnecting the USB cable or disconnecting the AC adaptor from the camera while a USB data communication operation is being performed
 - Low battery power
 - * Note that continued use of weak batteries can lead to malfunction of the camera. Charge the batteries or replace the batteries with new ones as soon as possible after signs of low power appear.
 - Other abnormal operations

Any of the above conditions can cause an error message to appear on the monitor screen (page 170). Follow the instructions provided by the message to eliminate the cause of the error.

Operating conditions

- This camera is designed for use in temperatures ranging from 0°C to 40°C (32°F to 104°F).
- Do not use or keep the camera in the following areas.
 - In areas subject to direct sunlight
 - In areas subject to high humidity or dust
 - Near air conditioners, heaters, or other areas subject to temperature extremes
 - Inside of a closed vehicle, especially one parked in the sun
 - In areas subject to strong vibration

Condensation

- When you bring the camera indoors on a cold day or otherwise expose it to a sudden change of temperature, there is the possibility that condensation can form on the exterior or on interior components. Condensation can cause malfunction of the camera, so you should avoid exposing it to conditions that might cause condensation.
- To keep condensation from forming, place the camera into a plastic bag before moving it into a location that is much warmer or colder than your current location. Leave it in the plastic bag until the air inside the bag has a chance to reach the same temperature as the new location. If condensation does form, remove the batteries from the camera and leave the battery compartment cover open for a few hours.

Lens

- Never apply too much force when cleaning the surface of the lens. Doing so can scratch the lens surface and cause malfunction.
- Fingerprints, dust, or any other soiling of the lens can interfere with proper image recording. Never touch the lens with your fingers. You can remove dust particles from the lens surface by using a lens blower to blow them off. Next, wipe the surface of the lens with a soft lens cloth.

Other

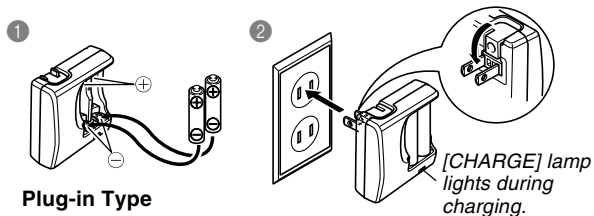
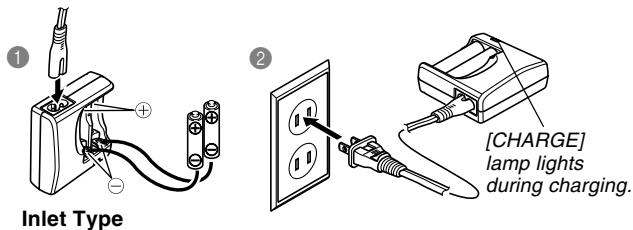
- The camera may become slightly warm during use. This does not indicate malfunction.
- If the exterior of the camera needs cleaning, wipe it with a soft, dry cloth.

QUICK START GUIDE

First, charge the batteries!

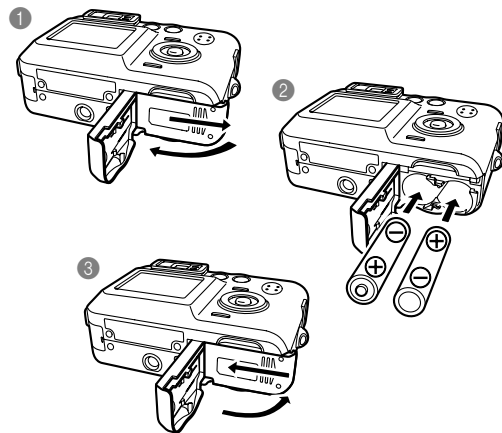
1. Charge the rechargeable nickel-metal hydride batteries (HR-3UA) that come with the camera (page 33).

- Note that the shape of the charger unit depends on the area where you purchased the camera.
- It takes about four hours to achieve a full charge.



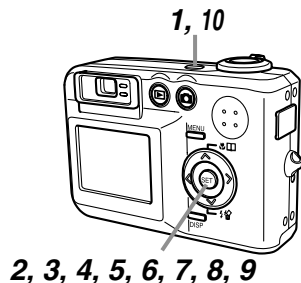
2. Load the batteries (page 37).

- Note that you can also power the camera using commercially available AA-size alkaline batteries. Note, however, that the life of alkaline batteries is relatively short, and that alkaline batteries cannot be recharged.



To configure display language and clock settings

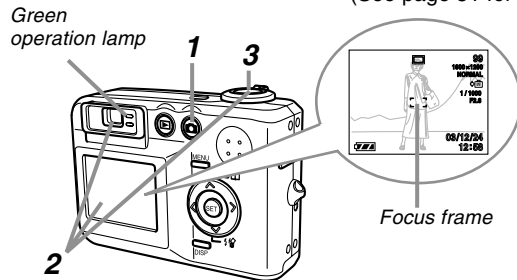
- Be sure to configure the following settings before using the camera to record images.
(See page 47 for details.)



1. Press the power button to turn on the camera.
2. Use [▲], [▼], [◀], and [▶] to select the language you want.
3. Press [SET] to register the language setting.
4. Use [▲], [▼], [◀], and [▶] to select the geographical area you want, and then press [SET].
5. Use [▲] and [▼] to select the city you want, and then press [SET].
6. Use [▲] and [▼] to select the summer time (DST) setting you want, and then press [SET].
7. Use [▲] and [▼] to select the date format setting you want, and then press [SET].
8. Set the date and the time.
9. Press [SET] to register the clock settings and exit the setting screen.
10. Press the power button to turn off the camera.

To record an image

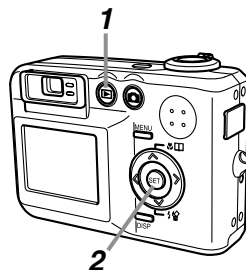
(See page 51 for details.)



1. Press [RECORD] (REC).
2. Point the camera at the subject, use the monitor screen or viewfinder to compose the image, and then press the shutter release button half way.
 - When proper focus is achieved, the focus frame turns green and the green operation lamp lights.
3. Holding the camera still, gently press the shutter release button.

To view a recorded image

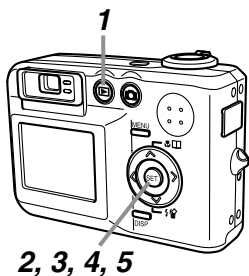
(See page 92 for details.)



1. Press [PLAY] (PLAY).
2. Use [LEFT] and [RIGHT] to scroll through the images.

To delete an image

(See page 102 for details.)



1. Press [▶] (PLAY).
2. Press [▼] (🗑).
3. Use [◀] and [▶] to display the image you want to delete.
4. Use [▲] and [▼] to select “Delete”.
 - To exit the image delete operation without deleting anything, select “Cancel”.
5. Press [SET] to delete the image.