



US008541983B2

(12) **United States Patent**
Veselic et al.

(10) **Patent No.:** **US 8,541,983 B2**
(45) **Date of Patent:** **Sep. 24, 2013**

(54) **CIRCUIT AND METHOD OF OPERATION FOR AN ELECTRICAL POWER SUPPLY**

(75) Inventors: **Dusan Veselic**, Oakville (CA); **Martin George Albert Guthrie**, Moffat (CA)

(73) Assignee: **BlackBerry Limited**, Waterloo, Ontario (CA)

(*) Notice: Subject to any disclaimer, the term of this patent is extended or adjusted under 35 U.S.C. 154(b) by 271 days.

(21) Appl. No.: **13/175,541**

(22) Filed: **Jul. 1, 2011**

(65) **Prior Publication Data**

US 2011/0260680 A1 Oct. 27, 2011

Related U.S. Application Data

(63) Continuation of application No. 13/028,361, filed on Feb. 16, 2011, now Pat. No. 7,999,514, which is a continuation of application No. 12/860,591, filed on Aug. 20, 2010, now Pat. No. 7,906,940, which is a continuation of application No. 10/372,180, filed on Feb. 21, 2003, now Pat. No. 7,791,319.

(51) **Int. Cl.**
H02J 7/00 (2006.01)
H02J 7/16 (2006.01)
G01R 19/12 (2006.01)

(52) **U.S. Cl.**
USPC **320/134**; 320/156; 320/132; 320/159;
320/160; 320/114; 307/32; 307/152

(58) **Field of Classification Search**
USPC 320/112, 113, 114, 115, 152, 157,
320/155, 134, 132, 156, 165, 158, 159, 160;
307/32, 34, 38, 39, 152, 159

See application file for complete search history.

(56) **References Cited**

U.S. PATENT DOCUMENTS

3,775,659 A 11/1973 Carlsen, II
4,433,251 A 2/1984 Banks et al.

(Continued)

FOREIGN PATENT DOCUMENTS

DE 201 16 332 1/2002
WO PCT/CA2004/000249 9/2004

OTHER PUBLICATIONS

“Notice Requesting Submission of Opinion,” issued in corresponding Korean Patent Application No. 10-2005-7015376, dated Oct. 27, 2010, pp. 1-6.

Charging Big Supercaps, Portable Design, p. 26, Mar. 1997.

(Continued)

Primary Examiner — Edward Tso

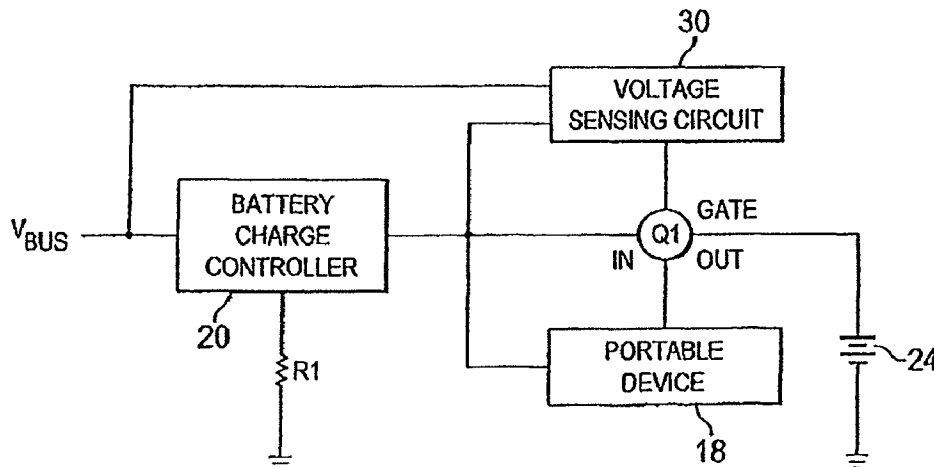
Assistant Examiner — Alexis Boateng

(74) *Attorney, Agent, or Firm* — Finnegan, Henderson, Farabow, Garrett & Dunner, LLP

(57) **ABSTRACT**

A battery charging circuit comprising: a semiconductor switch having an output connected to a rechargeable battery; a battery charge controller for receiving power from an external source, and supplying output power to a portable device and the input of the semiconductor switch, the current output of the battery charge controller being controllable; and a voltage sensing circuit for: measuring the voltage drop across the battery charge controller; and responding to the voltage drop across the battery charge controller by modulating the semiconductor switch to reduce the quantity of current supplied to the rechargeable battery when the voltage drop is too great; whereby the total power dissipated by the battery charge controller is controlled, the portable device receiving the power it needs to operate and the rechargeable battery receiving any additional available power.

26 Claims, 8 Drawing Sheets



(56)

References Cited

U.S. PATENT DOCUMENTS

4,510,431 A 4/1985 Winkler
 4,755,816 A 7/1988 DeLuca
 5,173,855 A 12/1992 Nielsen et al.
 5,179,335 A 1/1993 Nor
 5,229,649 A 7/1993 Nielsen et al.
 5,272,475 A 12/1993 Eaton et al.
 5,444,378 A 8/1995 Rogers
 5,631,503 A 5/1997 Cioffi
 5,638,540 A 6/1997 Aldous
 5,651,057 A 7/1997 Blood et al.
 5,721,481 A 2/1998 Narita et al.
 5,734,254 A 3/1998 Stephens
 5,769,877 A 6/1998 Barreras, Sr.
 5,804,894 A 9/1998 Leeson et al.
 5,814,972 A 9/1998 Shimada et al.
 5,850,113 A 12/1998 Weimer et al.
 5,898,290 A * 4/1999 Beard et al. 307/150
 5,898,293 A * 4/1999 Tamai et al. 320/136
 5,926,006 A 7/1999 Burroughs et al.
 5,939,860 A 8/1999 William
 6,100,664 A 8/2000 Oglesbee et al.
 6,104,162 A 8/2000 Sainsbury et al.
 6,104,759 A 8/2000 Carkner et al.
 6,118,254 A 9/2000 Faulk
 6,130,518 A 10/2000 Gabehart et al.
 6,140,801 A * 10/2000 Aoki et al. 320/132
 6,157,169 A 12/2000 Lee
 6,157,173 A * 12/2000 Baranowski et al. 320/152
 6,172,478 B1 1/2001 Leppo et al.
 6,184,652 B1 2/2001 Yang

6,191,552 B1 * 2/2001 Kates et al. 320/112
 6,211,649 B1 4/2001 Matsuda
 6,252,375 B1 6/2001 Richter et al.
 6,300,744 B1 10/2001 Shum
 6,346,794 B1 2/2002 Odaohhara
 6,362,610 B1 3/2002 Yang
 6,373,229 B1 4/2002 Slusky
 6,437,541 B1 8/2002 Sakurai
 6,437,543 B1 8/2002 Oler et al.
 6,498,458 B1 12/2002 Chen
 6,801,967 B2 10/2004 Nakamura et al.
 6,936,936 B2 * 8/2005 Fischer et al. 307/151
 2001/0004310 A1 6/2001 Kono
 2001/0015635 A1 * 8/2001 Leppo et al. 320/116
 2002/0079866 A1 * 6/2002 Odaohhara 320/150
 2003/0052547 A1 3/2003 Fischer et al.
 2003/0076138 A1 4/2003 Hwang
 2003/0146736 A1 * 8/2003 Kosuda et al. 320/132
 2003/0155892 A1 8/2003 Poletti
 2003/0204708 A1 10/2003 Hulme et al.
 2004/0042138 A1 3/2004 Saito et al.
 2004/0100226 A1 * 5/2004 Sakurai 320/136

OTHER PUBLICATIONS

Examiner's report on European Patent Application No. 04712979.6
 mailed Dec. 15, 2010, from the EPO (4 pgs.).
 Supercapacitor: User's Manual, vol. 2 (Japan, Tokin Corp., date
 unknown).
 China Office Action issued Nov. 17, 2011, in Application No.
 2004800047271 and English Translation (4 pages).

* cited by examiner

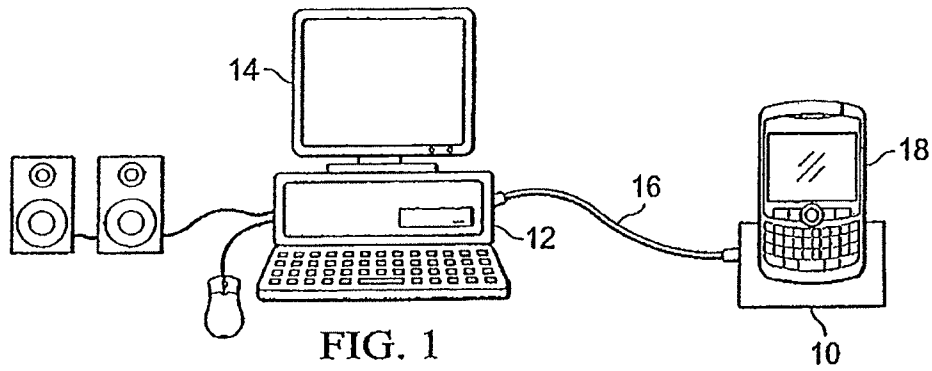


FIG. 1
(Prior Art)

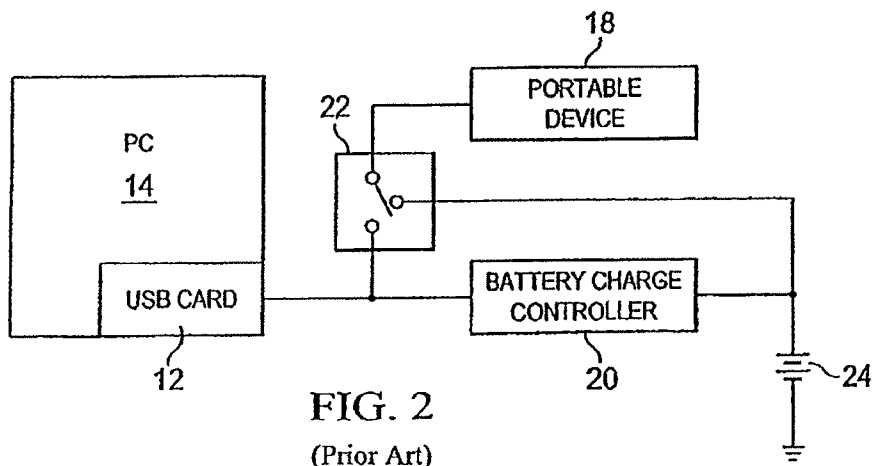
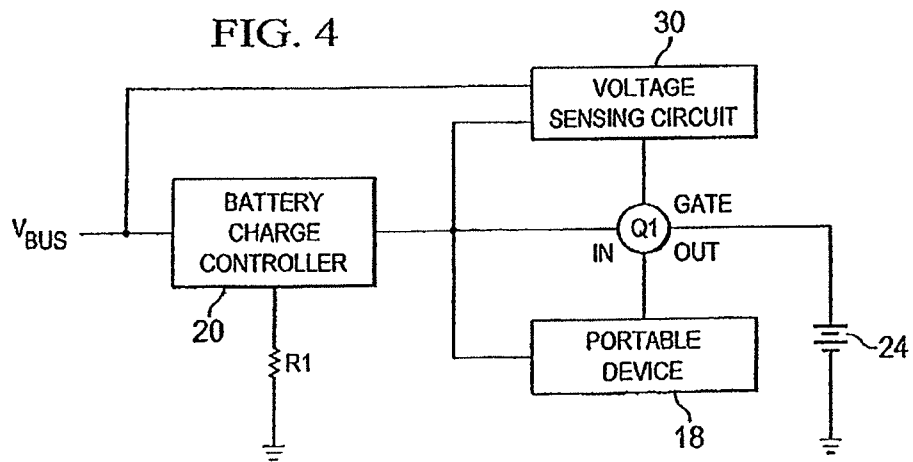
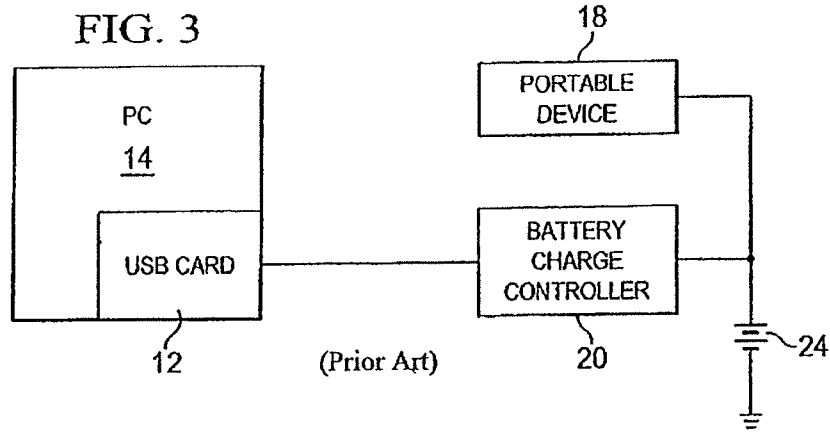


FIG. 2
(Prior Art)



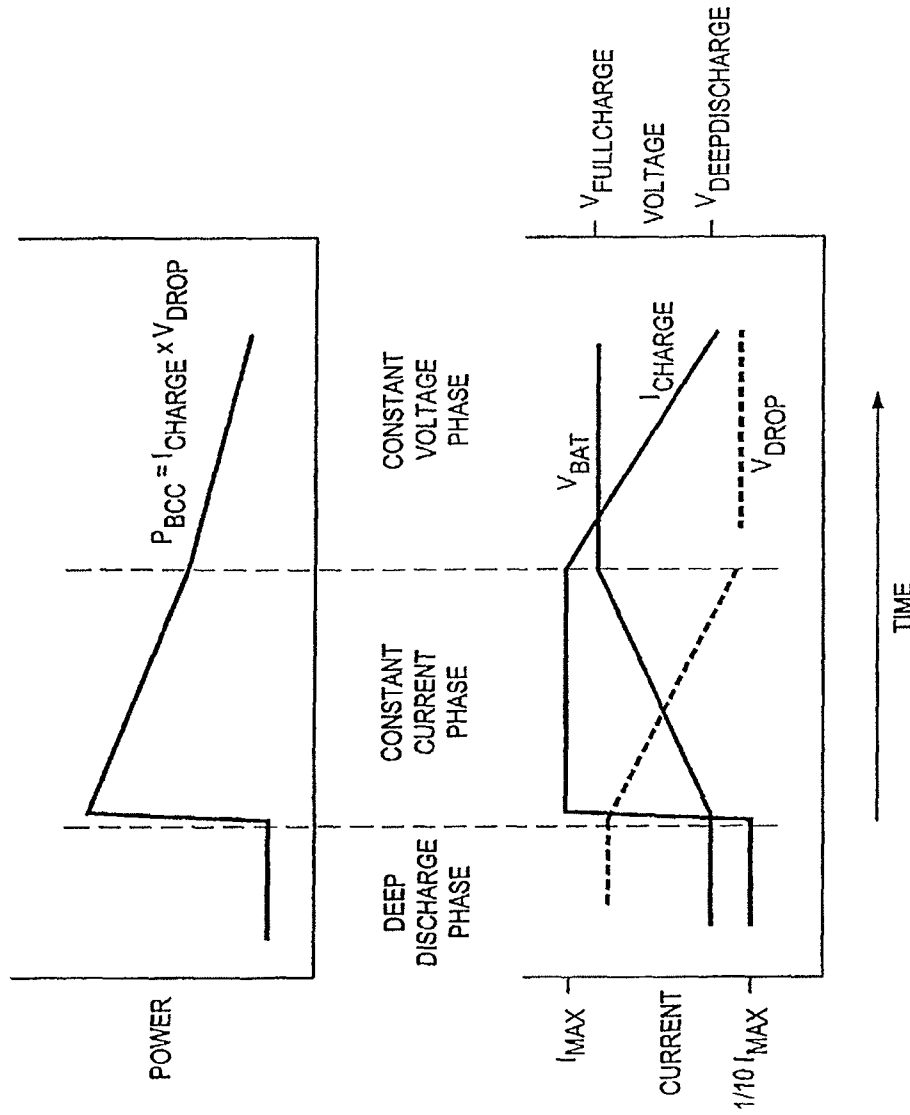


FIG. 5

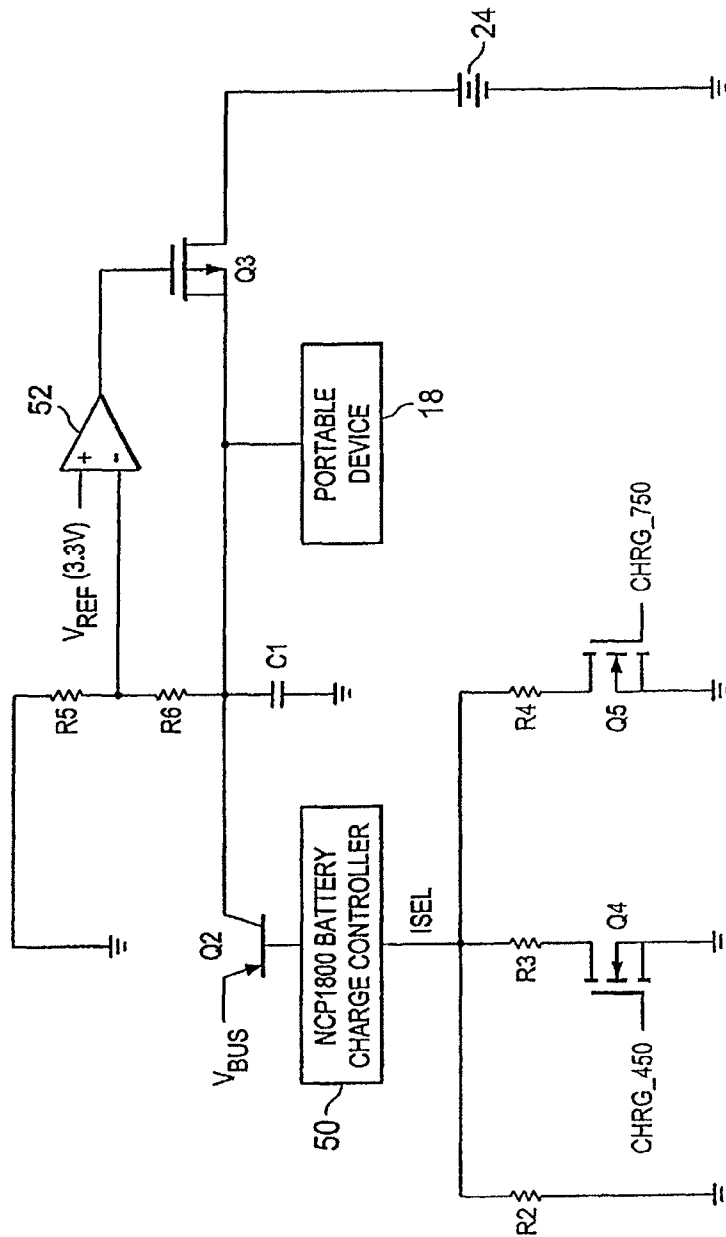


FIG. 6

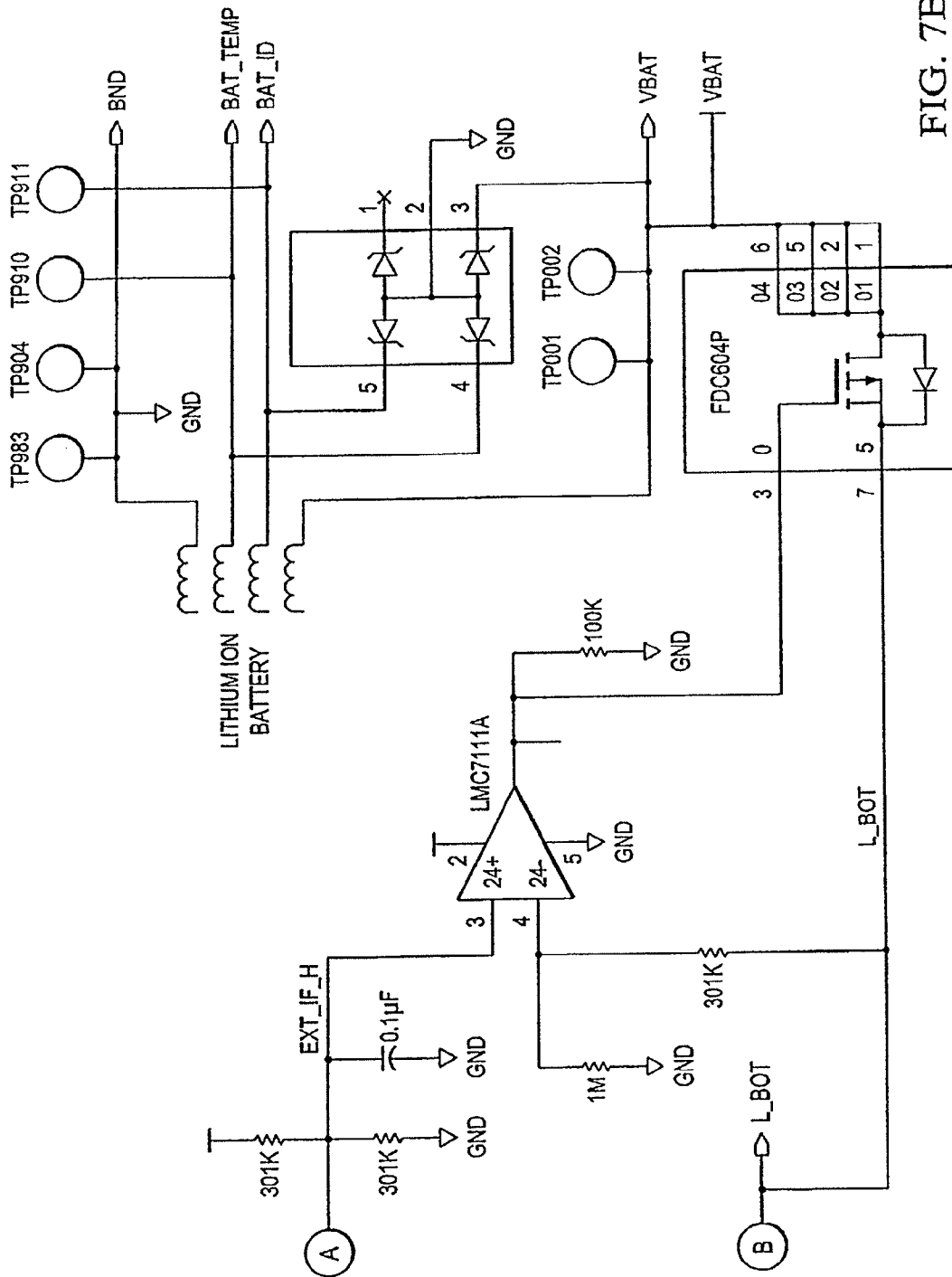


FIG. 7B

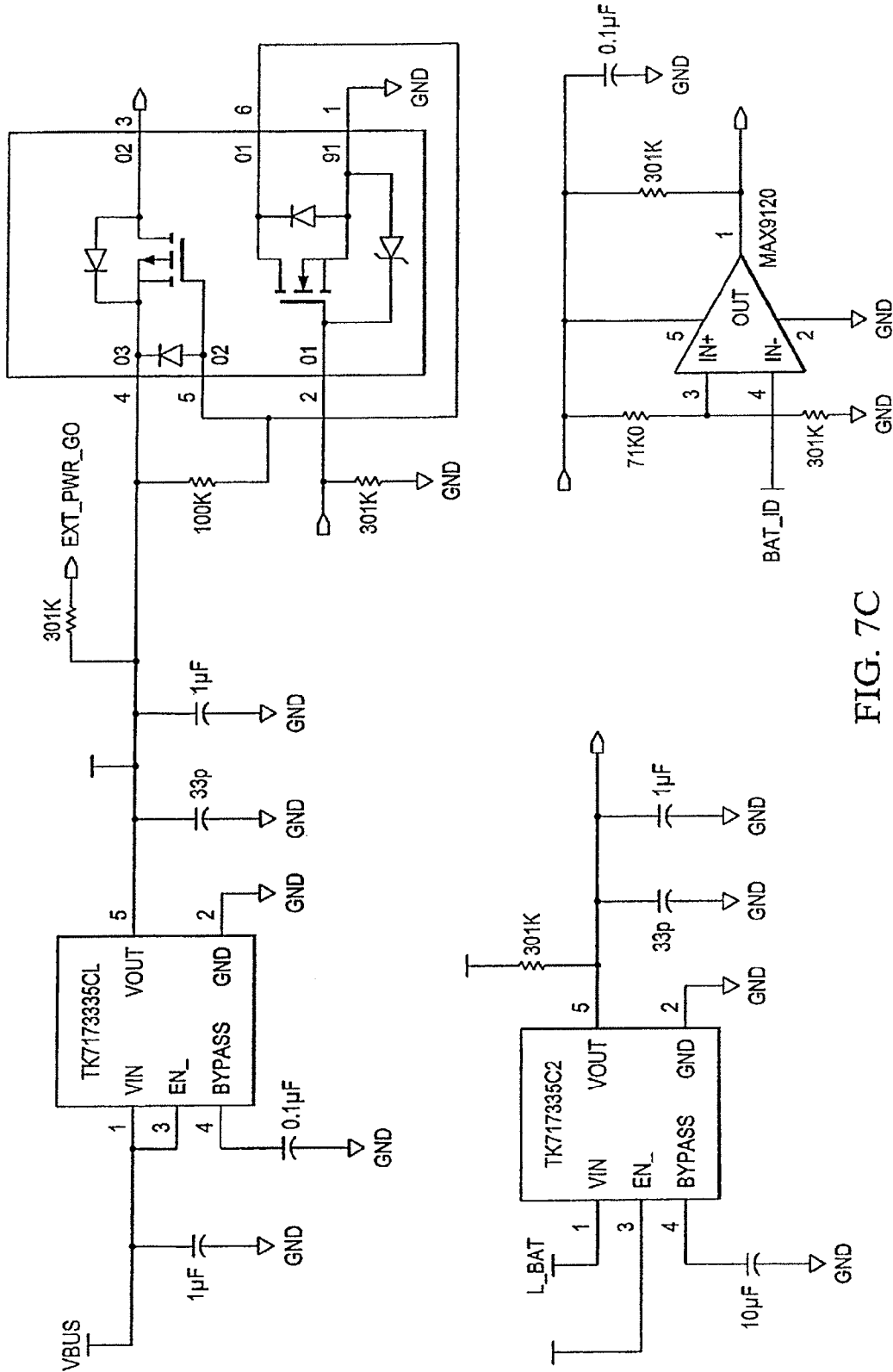


FIG. 7C

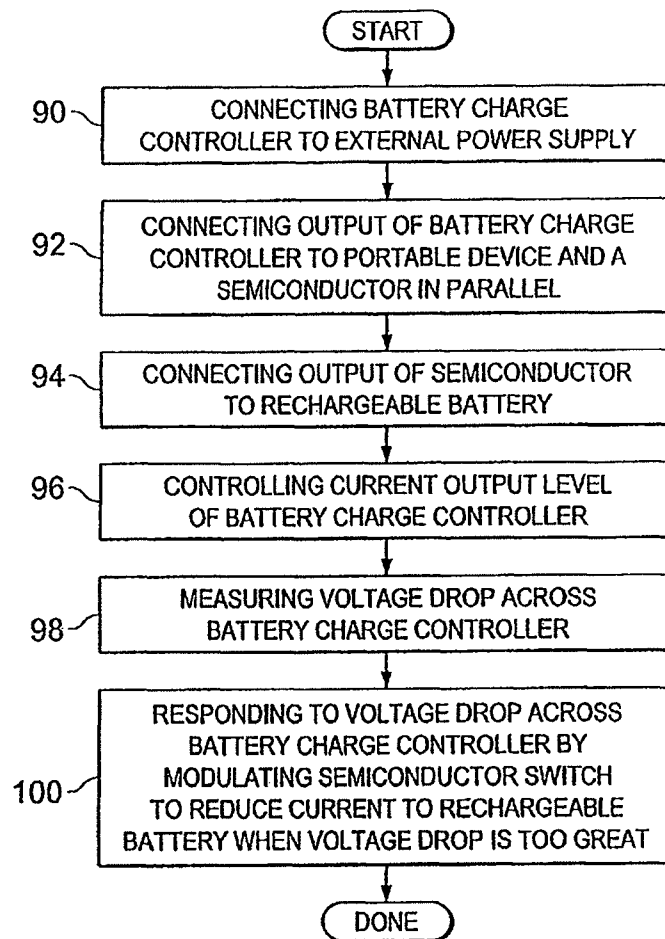


FIG. 8

CIRCUIT AND METHOD OF OPERATION FOR AN ELECTRICAL POWER SUPPLY

This is a continuation of U.S. application Ser. No. 13/028, 361, filed Feb. 16, 2011, which is a continuation of U.S. application Ser. No. 12/860,591, filed Aug. 20, 2010, (now U.S. Pat. No. 7,906,940), which is a continuation of U.S. application Ser. No. 10/372,180, filed Feb. 21, 2003, (now U.S. Pat. No. 7,791,319), all of which are incorporated herein by reference.

This invention relates in general to battery chargers, and more specifically to a method and apparatus for charging a battery in a portable communication device from a variety of power sources, including limited capacity sources such as an integral power node of a computer data bus. One such computer data bus would be a USB (universal serial bus) port.

BACKGROUND OF THE INVENTION

With the current computing and information revolution, portable electronic devices such as cellular telephones, personal digital assistants (PDAs), digital pagers and wireless email devices, are becoming very common. These portable devices are typically powered by internal batteries which must be recharged periodically by an external power source, using a battery charger. Battery chargers generally receive power from a standard AC electrical outlet and convert the AC power into a low DC voltage for recharging a battery.

The battery chargers of these portable devices also generally employ a "battery charge controller" to manage the charging of the battery. Such battery charge controllers offer functionality such as:

- regulating the voltage and current levels to the rechargeable battery;
- providing status signals to the main processor of the portable device, or operating one or more status LEDs (light emitting diodes);
- providing protection circuits such as overcurrent, undervoltage, reverse polarity and overtemperature protection; and
- shutting themselves off when the charging source has been removed, to minimize battery drain.

Lithium ion battery packs, for example, must be charged according to a relatively strict algorithm so that they can be fully charged, be charged and re-charged many times, and be safely operated. This charging algorithm generally proceeds as follows:

1. at the first stage, any severe undervoltage or deep discharge conditions are addressed. During this pre-charging stage, the battery voltage is gently brought up from a very low or dead state, usually at a rate of $\frac{1}{10}$ of the regular charge current;
2. next, the battery is charged at a constant current level, until the voltage across the battery reaches its design level (say, 4.2 VDC). At this point the battery will only be at 40 to 70% of full capacity; and then
3. charging of the battery continues at a constant voltage level (again, say 4.2 VDC) until it is fully charged. In this mode, the current drawn by the battery will drop over time. When the charge current has dropped to 10% of the initial charge rate, or some other limit determined by the battery manufacturer, charging is stopped.

Charging must stop at this point because trickle charging is not acceptable for lithium batteries; an overcharge will damage the cells, possibly plating out lithium metal and becoming hazardous.

Hence, lithium batteries are almost invariably used with battery charge controllers designed to their particular charging parameters.

Unfortunately, most battery charge controllers are designed to draw from a high capacity power supply with a steady voltage that will not sag appreciably under its current demands. This is a problem when one attempts to use a power supply with limited capacity. Some computer data buses such as USB (universal serial bus) buses can be used to provide power to external devices, but while such power supplies are very convenient, they have limited capacity.

The majority of personal computers (PCs) and laptop computers available today, are provided with one or more USB ports as standard components. USB ports are designed to support data communication at speeds of 12 megabits and 1.5 megabits per second, support PnP (Plug and Play) installation software, and support hot plugging (i.e. devices can be connected and disconnected while the PC is running). Thus, USB ports are often used as interfaces to connect keyboards, mice, game controllers, printers and scanners to PCs.

As well, USB ports are operable to supply limited power to connected external devices. The standard USB specification requires that "high-power" USB ports be operable to provide a supply voltage of 4.75-5.25 VDC and a supply current of at least 500 mA (often referred to as "five units"). The specification for "low-power" USB ports requires a supply voltage of 4.40-5.25 VDC and current of 100 mA (referred to as "one unit").

USB ports would seem to be a very logical choice as a power supply for portable devices for a number of reasons. To begin with, USB ports supply a low DC voltage supply which is often very close to, or just above, the voltage of the battery being charged (many portable devices having battery voltages in the range of 2.5-4.5 VDC). As well, many portable devices may be operable to upload and download data or software, to and from a personal computer or a laptop computer (often referred to as "syncing"). Thus, many portable devices are supplied with docking cradles as shown in the system diagram of FIG. 1. This is quite a straightforward system, as the docking cradle **10** is connected to a USB port **12** of a personal computer (PC) **14**, via a simple USB cable and connectors **16**. The portable device **18** need only be set down in the docking cradle **10** and an electronic connection to the PC **14**, is made.

If the USB port **12** has sufficient power, it makes much more sense to use the USB port **12** to supply charging power to the portable device **18**, rather than using a separate AC charger. For example:

1. a USB power supply will have less electrical noise than an AC charger, unless the AC charger incorporates large DC capacitors or inductors;
2. an AC charger requires either a heavy transformer or an expensive switching power supply, neither of which would be required if USB power is used;
3. in the USB power supply implementation, the cable and connectors **16** used to connect the docking cradle **10** to the PC **14** could be used to carry both power and data, so no extra physical components would be required at all. In contrast, an AC power supply would have to be provided as a separate physical component from a USB data cable; and
4. there are no universal standards for AC power supplies; a given AC power supply may require 120VAC or 240VAC as an input, and may provide 3, 4.5, 6, 7.5 or 9 VDC out, with one of large number of different possible connectors and polarities. A traveller who forgets his AC power supply at home, may not be able to find a suitable replacement.

In contrast, the USB standard is widely accepted, so that a traveller whose mobile device is equipped with a USB connector will have a much greater chance of finding a charging source.

Thus, it would clearly be desirable to use USB power to charge portable devices. Unfortunately though, as noted above, USB ports can only provide limited power. The problem becomes clear when considering the block diagram of FIG. 2. In this scenario, the portable device **18** and the battery charge controller **20** are connected to the USB port **12** in parallel, as under charging conditions the control switch **22** will be toggled so that the portable device **18** draws power from the USB port **12**. When the battery **24** has become fully charged by the battery charge controller **20** and the USB port **12** power removed, the control switch **22** is then toggled so that the portable device **18** draws power from the battery **24**. This type of circuit may work in some circumstances, but it is not acceptable where the power source has limited capacity.

If one attempts to power the portable device **18** and battery charge controller **20** simultaneously from the USB card **12**, it is quite likely that too great a load would be placed on the USB card **12**. The excessive load on the USB card **12** may result in an undervoltage or low current condition that could result in a number of undesirable problems such as: the battery **24** not becoming properly charged or becoming permanently damaged, or the portable device **18** operating erratically or becoming damaged.

As an alternative, the battery **24** and portable device **18** could be arranged as shown in FIG. 3 so that they are both fed by the battery charge controller **20**. While such a design would reduce the total power drawn by the portable device **18** and battery **24** in combination, there are a number of other problems:

1. most importantly, there is still no control over the total power that is drawn from the USB port **12**;
2. the power drawn by the portable device **18** could disturb the carefully designed protection and charging mechanisms of the battery charge controller **26**;
3. the portable device **18** and battery **24** compete arbitrarily for the available power, so they may adversely affect the operation of one another. If the available voltage drops too low, or insufficient current is available, either device may operate erratically, or fail all together;
4. if the battery **24** is in a deep-discharge state when power is turned on, the voltage to the portable device **18** will be dragged down to the level of the deep-discharged battery. Typically, portable devices **18** will not be operable at such a low voltage level; and
5. the current that must be supplied to the battery **24** and the portable device **18** must be dissipated by the battery charge controller **20** or an external semiconductor in some way. The more power that is dissipated, the larger the battery charge controller **20** (or the external semiconductor driven by the battery charge controller **20**) must be. Generally, a semiconductor's ability to dissipate power varies with its surface area, thus, if the power dissipation is doubled, the semiconductor must increase by four times the surface area.

New, dedicated battery charge controllers could be developed which are designed to operate with a USB power supply and a portable device **18**, but that would be an expensive and complicated solution. Each battery charge controller would have to be designed to suit a particular pairing of a portable device **18** and battery **24** because it would have to take the power consumption requirements of both components into account.

There is therefore a need for a method and apparatus which allows standard computer data busses such as USB ports to simultaneously power portable devices **18** and their associated battery charge circuits **20** without having to design new battery charge controllers with very specific applications. This design must be provided with consideration for the tight operating parameters of battery charging circuits, the limited physical board area in portable devices, and the reliability and complexity of the design.

SUMMARY OF THE INVENTION

It is therefore an object of the invention to provide a novel method and apparatus which allows standard battery charge controllers to be supplied from standard computer data ports and other power sources, which obviates or mitigates at least one of the disadvantages of the prior art.

One aspect of the invention is broadly defined as a battery charging circuit comprising: a semiconductor switch having an output connected to a rechargeable battery; a battery charge controller for receiving power from an external source, and supplying output power to a portable device and the input of the semiconductor switch, the current output of the battery charge controller being controllable; and a voltage sensing circuit for: measuring the voltage drop across the battery charge controller; and responding to the voltage drop across the battery charge controller by modulating the semiconductor switch to reduce the quantity of current supplied to the rechargeable battery when the voltage drop is too great; whereby the total power dissipated by the battery charge controller is controlled, the portable device receiving the power it needs to operate and the rechargeable battery receiving any additional available power.

Another aspect of the invention is defined as a battery charging circuit comprising: a battery charge controller connected to the external power supply and electrifying a battery and a portable device, and having a maximum current setting; and a regulating circuit for sensing the voltage drop across the battery charge controller, and modulating the current to the battery to keep the power dissipated by the battery charge controller below a predetermined level.

An additional aspect of the invention is defined as a method for charging a battery of a portable device via an external power supply, the method comprising the steps of: connecting the input of a battery charge controller to the external power supply; connecting the output of the battery charge controller, in parallel, to the portable device and the input of a semiconductor switch; connecting the output of the semiconductor switch to the battery; controlling the current output of the battery charge controller; measuring the voltage drop across the battery charge controller; and responding to the voltage drop across the battery charge controller by modulating the semiconductor switch to reduce the quantity of current supplied to the rechargeable battery when the voltage drop is too great; whereby the total power dissipated by the battery charge controller is controlled, the portable device receiving the power it needs to operate and the rechargeable battery receiving any additional available power.

A further aspect of the invention is defined as a power supply circuit comprising: means for measuring the voltage drop across a battery charge controller providing power to a portable device and the input of a semiconductor switch in parallel; means for controlling the current output of the battery charge controller; and means for responding to the voltage drop across the battery charge controller by modulating the semiconductor switch to reduce the quantity of current supplied to the rechargeable battery when the voltage drop is

too great; whereby the total power dissipated by the battery charge controller is controlled, the portable device receiving the power it needs to operate and the rechargeable battery receiving any additional available power.

BRIEF DESCRIPTION OF THE DRAWINGS

These and other features of the invention will become more apparent from the following description in which reference is made to the appended drawings in which:

FIG. 1 presents a physical layout of a personal computer connected to a portable electronic device in a manner known in the art;

FIG. 2 presents an electrical block diagram of a battery charging circuit and portable device being powered in parallel;

FIG. 3 presents an electrical block diagram of a battery and portable device both being powered by a battery charge controller;

FIG. 4 presents an electrical schematic diagram of a battery charging circuit in a broad embodiment of the invention;

FIG. 5 presents a timing diagram of voltage, current and power curves for the charging of a lithium ion battery in an embodiment of the invention;

FIG. 6 presents an electrical schematic diagram of a battery charging circuit in a simple embodiment of the invention;

FIGS. 7A, 7B and 7C present an electrical schematic diagram of a battery charging circuit in a comprehensive embodiment of the invention;

FIG. 8 presents a flow chart of a method of operating a battery charging circuit in an embodiment of the invention.

DESCRIPTION OF THE INVENTION

As explained above, there is currently no effective design which is capable of powering both a portable device and a rechargeable battery from a power supply with limited capacity.

A circuit which overcomes a number of the problems in the art, is presented as a block diagram in FIG. 4. This figure presents a battery charging circuit build around a standard battery charge controller 20. In this embodiment of the invention, the battery charge controller 20 receives power from an external source (V_{BUS}) and feeds a portable device 18 and rechargeable battery or batteries 24 in parallel, but the feed to the battery 24 is made via a semiconductor switch Q1. Control of the current flow through the semiconductor switch Q1 is modulated by a voltage sensing circuit 30 which measures the voltage drop across the battery charge controller 20 and reduces the current flow through the semiconductor switch Q1 to the battery 24 when the voltage drop is too great.

The voltage sensing circuit 30 allows the total power consumption of the circuit to be inferred because the current output of the battery charge controller 20 is controllable, and power is the product of voltage drop and current. Most battery charge controllers 20 known in the art are provided with some sort of maximum current control. In the exemplary embodiments described hereinafter, for example, the maximum current output of battery charge controller 20 is simply set via an external resistor R1, though of course, the current output could also be controlled in many other ways (for example, being programmable, application specific, or set via some form of analogue or digital input signal).

Also in the embodiments described hereinafter, the voltage sensing circuit 30 itself is provided via an operational amplifier (op amp). Thus, the voltage drop across the battery charge controller 20 could simply be measured by comparing the

voltage at the input and output of the battery charge controller 20, as shown in FIG. 4. Alternatively, one input to the op amp could be taken from the output of the battery charge controller 20, while the other could be some reference voltage V_{REF} ; either emulating the V_{BUS} input to the battery charge controller 20, or being scaled in some manner.

Thus, by monitoring the voltage drop across the battery charge controller 20 and knowing the maximum current that it may provide, the total power is known. Using this information to modulate the power to the battery 24, the total power dissipated by the battery charge controller 20 may be controlled.

Also, because this circuit modulates the power available to the battery 24, this circuit can be designed to ensure that the portable device 18 receives the power it requires for operation, while the rechargeable battery 24 only receives power when surplus capacity is available.

The total power consumed may therefore be modulated to stay within the limits of the power available from the USB port 12, and within the range of power that the battery charge controller 20 is able to dissipate. This allows battery charge controllers 20 to be used "off the shelf", rather than having to design new and larger battery charge controllers 20 which can dissipate enough power to supply both the portable device 18 and battery 24. It also allows the battery charge controller 20 or external driving element to be kept physically small.

With this power modulation mechanism, there is no longer power competition between the portable device 18 and the battery 24. The battery 24 receives power only if there is more power available than the portable device 18 requires. This may seem inconsistent with the charging requirements of batteries such as lithium cells, but the parameters of the circuit may easily be designed to accommodate them.

As noted above, battery charge controllers are usually designed to suit a particular battery or family of batteries. For example, lithium batteries are charged in three phases:

1. resolving deep discharge conditions;
2. constant current charging until the battery reaches a certain voltage level; and then
3. constant voltage charging until the charging current drops to a certain point.

During the initial handling of deep discharge conditions, comparatively little current is provided to the battery (typically $\frac{1}{10}$ of the charge current). The circuit of the invention is therefore designed so that the battery will rarely be denied this very modest power demand.

The constant current charging phase draws the greatest amount of power, but lithium cells do not suffer if the charging current is modulated or cycled during this phase. Thus, it is this phase that is altered the greatest by the circuit of the invention. If the portable device 18 is used a great deal during this phase, the only negative impact will be that the charging of the battery 24 takes much longer.

During the constant voltage charging phase, the maximum current is less than that of the constant current phase and drops continuously as the battery 24 becomes fully charged. More important, the battery 24 voltage stays at a constant, and maximum, level during this phase, so the total power dissipated by the battery charge controller 20 will be lower during the constant voltage phase, than it was during the constant current phase.

As will be described in greater detail hereinafter, the voltage sensing circuit 30 is designed to saturate the semiconductor switch Q1 when the full charge voltage level is reached (i.e. the semiconductor switch Q1 does not restrict current flow at all at this point).

The change in power dissipation over time is shown in FIG. 5. Four curves are shown in this figure: the voltage of the battery 24, labelled V_{BAT} , the charge current, labelled I_{CHARGE} , the voltage drop across the battery charge controller 20, labelled V_{DROP} , and the total power dissipated, labelled PBCC. Note that V_{DROP} varies inversely with V_{BAT} , and that the power dissipated by the battery charge controller 20, is the product of I_{CHARGE} and V_{DROP} .

Clearly, during the conditioning phase, the battery voltage V_{BAT} is low, so V_{DROP} will be high. However, I_{CHARGE} is also low during this phase (about $1/10$ of $I_{MAXCHARGE}$, the maximum charging current) so the total power dissipated is modest.

During the constant current phase, the charge current rises to $I_{MAXCHARGE}$, but the voltage of the battery, V_{BAT} , drops as the battery becomes charged, so the power dissipated by the battery charge controller 20 drops over the course of this phase.

As the constant voltage phase begins, the battery voltage has reached its fully charged level, $V_{FULLCHARGE}$, so V_{DROP} is at a minimum. As I_{CHARGE} drops over the course of this phase, the power dissipated also continues to drop (noting again, that the power dissipated is the product of I_{CHARGE} and V_{DROP}).

Clearly then, the greatest power level is drawn during the constant current phase. As noted above, the charging of the battery 24 can be safely cycled during this phase, so the restriction in current to the battery 24 during this phase, is allowable.

This circuit also allows the user to boot his portable device 18 very quickly because it isolates the battery 24 from the portable device 18. If the battery 24 and portable device 18 were connected when the battery charge controller 20 attempted to condition a deep discharged battery 24, the voltage at the portable device 18 would be drawn down to the level of the deep-discharged battery 24. Typically, this would be too low for proper operation of the portable device 18. With the circuit of the invention, the battery 24 and portable device 18 are isolated by Q1. Even if the battery 24 is in a deep-discharge state, the portable device 18 will still see a voltage that is high enough for proper operation.

The time for the portable device 18 to boot up is therefore only limited by the enabling time of the battery charge controller 20 itself. A typical figure for this ramp-up is 1 mS-4 mS, though it could vary from one battery charge controller 201 to another.

Thus, the use of the circuit in FIG. 4 allows computer data busses and similar power supplies with limited capacity, to supply power to portable devices and discharged batteries simultaneously.

A number of different embodiments of the invention will now be described. Each embodiment uses a very small number of simple, reliable components. Thus, as a whole, the invention provides an effective solution which is inexpensive, reliable and consumes minimal board space in a portable device.

Basic Implementation

FIG. 6 presents an electrical schematic diagram of a charging circuit which employs four main components: an NCP1800 battery charge controller 50, a semiconductor Q2, which serves as external driving element for the battery charge controller 50, an operational amplifier (opamp) 52, and a MOSFET (metal oxide silicon field effect transistor) Q3, which controls the current to the rechargeable battery 24.

The NCP1800 battery charge controller 50 is a standard, single-cell, Lithium ion battery charge controller as known in the art. The maximum current that this device will provide is

regulated by the resistance between pin ISEL and ground. In this case, three resistors R2, R3 and R4 are used to set the maximum current levels for different operating conditions. The default condition is that only 100 mA is available (low-power. USB), which establishes the value for resistor R2. If it is detected that the device is plugged into a high-powered USB source, then the gate of MOSFET Q4 will be energized, and the resistance between ISEL and ground will be set by the resistance of R2 and R3 in parallel.

Similarly, if it is detected that the source of power for the circuit has even more power available (an AC plug-in or car adapter, for example), then MOSFET Q5 will be energized so that the resistance between ISEL and ground will be set by the resistance of R2 and R5 in parallel. The circuit of FIG. 6 will typically be included in the portable device 18 itself, or in a docking cradle 10, thus it should also be operable with such larger capacity power supplies.

Application notes from the manufacturer of the NCP1800 battery charge controller 50 are available which will assist the designer in establishing the specific parameters and values for resistors R2, R3 and R4 and the driving transistor Q2.

The voltage sensing portion of this circuit is provided by op amp 52, along with resistors R5 and R6, and capacitor C1. This circuit monitors the voltage on the collector side of Q2 (via voltage divider R5 and R6), and compares it to a reference level (in this case, $V_{REF}=+3.3V$). If the voltage on the collector side of Q2 drops, then the voltage drop across Q2 rises and the power it must dissipate rises. To reduce the power that must be dissipated, the op amp 52 restricts the current through Q3 increasing its drain source resistance.

Note that V_{REF} may simply be provided from V_{BUS} and a voltage regulator. V_{REF} is used as an input to the op amp 52 rather than V_{BUS} because the regulator will provide a constant output voltage, whereas V_{BUS} has a wide range making the design more difficult. The values of resistors R5 and R6 are established simply by the need to scale the V_{BUS} value to the V_{REF} value.

Also, note that capacitor C1 is included in the circuit to smooth out fluctuations and to prevent oscillation.

As described above, this circuit allows the portable device 18 to draw power via Q2, without causing the combined draws of the portable device 18 and the battery 24 to exceed the power capacity of Q2. As the portable device 18 draws power, the voltage on the collector side of Q2 drops and the current via Q3 is throttled in a linear mode.

Power dissipation must be designed for the worst-case scenario. For example, if the maximum design parameters are as follows:

- up to 0.85 A is available;
- an input voltage could be as high as 6V; and
- pre-charging of the battery 24 is complete at 3.0V (that is where the highest charge current is delivered to battery, as shown in FIG. 5);

then $(6V-3V)*0.85 A=2.55 W$ of power that would be dissipated by the external drive element Q2 (note that in circuits which do not use such an element, all of this power would be dissipated by the battery charge controller 50).

This external drive element Q2 must dissipate heat generated by the current that flows through it. The more power that is dissipated, the larger physical size this pass element must be; generally, the surface area that a device requires, rises with the square of the power to be dissipated. That is, if the power is doubled, a transistor with four times the surface area is required. The sizes of transistors are standardized, so the preferred embodiment of this circuit is designed to employ SOT-23 (or superSOT-6) packages, which are capable of dis-

sipating up to 1.6 W. The next size is SOT-223, which is considerably larger with twice the power dissipation.

As noted above, throttling of power to the battery **24** is done so that the current always satisfies the needs of the portable device **18** and any current left over (difference between the input current and the current to the portable device **18**) is delivered to the battery **24**. For example, suppose that the circuit is connected to a high power USB port (500 mA is available) and a portable device **18** such as portable Blackberry™ handheld device. When the Blackberry goes to sleep, it may only require 0.3 mA-0.7 mA so the balance of the available current (499.3 mA-499.7 mA) may be provided to battery **24**. Once the Blackberry wakes-up, which it does periodically to perform house keeping jobs, it draws say 30 mA-70 mA, depending on what it does. At this point, the battery **24** receives 430 mA-470 mA. The analysis occurs when the Blackberry is to receive or transmit some data, or perform some other task. In each case, the power to the battery **24** is dynamically auto-adjusted.

When limited power is available, it is also desirable to cut off high-power consuming components, preserving power only for the processor. This is easily done by connecting only the processor and memory of the portable device **18**, to Q2 as shown in FIG. 6, and connecting other high power consumers to the battery side of Q3. As a result, if we are operating with a limited current source (such as low-powered USB of 100 mA) and an excessive current component such as a vibrator (typically 120 mA) or a back-light (typically 150 mA) is turned on, the voltage output from Q2 would start to drop, causing Q3 to increase its Rds resistance and preserve the current needed by the processor.

Comprehensive Implementation

The design presented in FIGS. 7A through 7C uses the same basic circuitry as in FIG. 6, but adds several elements which provide further advantages. These advantages include the following:

- the battery can be charged with an input voltage being just above the battery level;
- the start-up of the portable device **18** when battery is dead or not present, is different from that of FIG. 6;
- the handling of input glitches from the external power supply is improved; and
- contrary to the instructions of the manufacturer of the battery charge controller used in this implementation, the VCC and IN pins are fed separately, to avoid back voltage leakage and potential latch-up problems in the battery charge controller.

The specific design parameters for this embodiment of the invention can be summarized as follows:

1. constant current, constant voltage charging capabilities (as required for charging of Lithium Ion batteries);
2. current selection for 100 mA, 500 mA and 750 mA power supplies;
3. operation of the portable device **18** when the rechargeable battery **24** is low, dead, or not present;
4. start-up and operation of the portable device **18** within less than 100 mS, in the cases the battery **24** is not present or it is dead;
5. compliance with USB suspend mode of operation (system should draw less than 500 uA);
6. over voltage protection above 5.8V up to minimum of 10V;
7. protection against a short circuit on the battery connector;
8. allow charging with the input voltage as low as the portable device **18** needs for its safe operation;
9. voltage in the range of 3.3V-3.6V for pull-up resistor on D+ line;

10. provide means to connect and disconnect the voltage to pull-up resistor on D+line;
11. battery presence indication; and
12. providing status of the battery charge controller.

The general description of this comprehensive implementation of the invention follows:

The circuit of FIGS. 7A-7C centres around a Texas Instruments bq24020 Lithium Ion battery charge controller, labelled as U909 in FIG. 7C. This battery charge controller provides the constant current and constant voltage modes required to charge Lithium Ion cells, and supports externally programmable current limits. Its UVLO (under voltage lock-out threshold) is provided by the PFI/PFO (U908) comparator (Texas Instruments TPS3103E15) with reference, and its threshold is set by the resistor dividers of the VBUS input. U908 is also used to guarantee initial start-up operation of U909 with minimum of 100 mS. This provides means to enumerate when operating with low/dead or without battery. Overvoltage protection (OVP) is provided by the U912 which is set to ~5.8V. Charging status is provided by the battery charge controller U909, which indicates whether or not the controller is delivering current to the system. Voltage for the D+ pull-up resistor is provided by U901 (a low voltage dropout regulator, Toko TK71733SCL) and its switching capability via Q907. The same voltage is also used to power-up the components that are used only when the external power is available via VBUS (U906, U905, etc).

A comparator U905 (LMC7111A) and a MOSFET Q908 are used to boost the system voltage when operating with low/dead battery or without the battery. This closed loop also “throttles” current to the system under no battery, and low battery conditions. This occurs because when the L_BAT voltage drops (due to the system load) U905 acts to turn off Q908, directing more current to the system (away from battery).

Comparator U907 provides the battery presence status indicator.

Battery connector short circuit protection is NAND’ed (U906) with the charger enable functionality, thus automatically disabling the battery charge controller U909 when a short is present. The battery charge controller U909 automatically re-starts the charge if the battery voltage falls below an internal threshold, and automatically enters sleep mode when VCC supply is removed.

Theory of Operation

Note that the inputs and outputs of the circuit in FIGS. 7A-7C can be summarized as follows:

Signal	Connection	Description
VBUS	To Power source (USB or charger)	Power input to the device, used for battery charging or device operation
CHRG_EN	System Control Signal	enables/disables charger and current delivery to the system; Reset State: HIZ (pull-down resistor makes RST = LOW, charger is OFF)
CHRG_A	System Control Signal	enables 450 mA current limit for the charger; reset state: LOW
CHRG_B	System Control Signal	enables 750 mA current limit for the charger; reset state: LOW
USB_CD	System Control Signal	goes HIGH every time the VBUS is above ~2.1 V
CHRG_FLG	System Control Signal	charger status flag; reset state: LOW
VBAT	To rechargeable battery	main power source for the rechargeable battery, reset state: battery voltage value

-continued

Signal	Connection	Description
L_BAT	To portable device	provides system power, reset state: battery voltage level

VBUS, the input voltage, is presented via **Q904a** to the USB input pin of the battery charge controller **U909**. **Q904** is used for OVP and is controlled by **U912** (3.0V under voltage detector, National Semiconductor LMS33460) whose input voltage is provided via resistor divider **R937** and **R925+R926**. Its open drain output keeps **Q904** in saturation while $VBUS/(R937+R925+R926) \cdot (R925+R926) < 3.0V$, which provides OVP above $-5.8V$.

While USB input to the battery charge controller **U909** is present, 100 mA and 500 mA current limit could be selected via **CHRG_B** (**CHRG_B**=LOW provides 100 mA, and **CHRG_B**=HIGH provides 500 mA). Resistor **R941** sets default LOW logic level to the **ISET2** input of **U909**, thus allowing a 100 mA default current limit. This is important as it makes the system compliant with the USB specification when operating with low/dead or without battery. A USB device is limited to 100 mA operation, until the device enumerates to 500 mA (if the host USB supports this).

Resistor **R940** provides a default LOW input level to the gate of **Q905a**, which keeps it out of saturation (OFF) while in reset mode and therefore sets the gate voltage of **Q904b** at its source level (at the level of VBUS voltage) which disallows the VBUS presence at AC input of the battery charge controller **U909** controller. Resistors **R932** and **R936** are pull-up resistors for **Q904**.

Charging current of 750 mA (used for non-USB power sources) could be selected by setting **CHRG_A**=HIGH, which sets **Q905a** in saturation (ON) and in turn puts **Q904b** in saturation (ON) as well, presenting VBUS voltage at AC input of the battery charge controller **U909**. As an AC input to **U909** provides override over the USB input (if voltage on the AC input exceeds 1.5V charging input-output path is defaulted to AC input) charging current is now programmed by the value of **R939** resistor.

Capacitor **C925** is used to prevent **Q904b** from conducting because of its gate-to-drain parasitic (gate-to-drain capacitance would charge the gate, if pulled up to its source, at RC time) capacitance during the fast transient responses of VBUS voltage, and allows the gate to rapidly charge at the VBUS level keeping the **Q904b** in saturation. Resistor **R935** is used to limit the discharge current of **C925** so that **Q905a** does not exceed its specified limits. **R933** is a pull-down resistor that prevents an AC input to the battery charge controller **U909** from floating. **C926** and **C927** are input bypass capacitors. It is important to keep the total input capacitance below 10 uF to comply with the USB inrush current specification.

The total current that the system draws from VBUS, should not exceed 500 uA when in suspend mode. This is mainly accomplished by the very low operating current of the battery charge controller **U909** (typically <100 uA) in the OFF mode of operation. **Q905b** is used to disable the LBAT voltage booster when the battery charge controller **U909** is not delivering any current to the battery **24** and/or portable device **18**. It does this by shorting the positive input of the **U905** which makes its output to drive **Q908** into saturation (ON).

U906b is used as an inverter of the **CHRG_FLG** flag, simply to make it compatible with the software and hardware the rest of the system. **R931** is a pull-up resistor for **CHRG_FLG** open drain output.

Processor supervisor **U908** has dual functionality. Its PFI (power fail input) input level is set by the resistor divider **R937+R925** and **R926** so it matches the **U908** internal reference when VBUS drops down to 3.3V (or the value of LBAT voltage set by the **U905** and **Q908** when operating with low/dead or without battery), causing its open drain output (power fail output—PFO) to go to GND. This would force the positive input node of **U905** to go to GND and put **Q908** in saturation (ON). This set of circuitry creates an Under Voltage Lock Out (UVLO) threshold for the L_BAT boost circuit. This is important as the **U909** can operate down to 2.5V, causing its status flag to indicate current delivery to the system even though it really does not (the battery **24** internally disconnects below 2.5V). Such a condition would cause the system to reset (for battery voltage levels lower than the preset minimum LBAT value) as the **U905/Q908** would try to keep the LBAT voltage, at the preset value, by disconnecting the battery **24** and thinking that the battery charge controller **U909** is delivering enough current.

The second functionality of **U908** is the start-up override on the **U909**-CE input pin, which provides power to the system for a minimum of 100 mS to initiate and properly enumerate on the USB-BUS. This is accomplished by the keeping its RESET open drain output at GND before the VBUS reaches 2.5V and than 100 mS after. This keeps the battery charge controller **U909** enabled during that time.

U906a provides NAND'ed functionality of **CHRG_EN** and presence of the short on the battery connector. A shorted battery disables the battery charge controller **U909** in hardware. By having the voltage on the VBAT, **CHRG_EN** control line could enable or disable the battery charge controller **U909** (**CHRG_EN**=HIGH would enable the battery charge controller **U909** by pulling low the MR input pin of **U908**). **R921** provides isolation from the battery and input of **U906a** so that the current drain is limited to maximum of 42 uA even though the **U906** creates HIZ (high impedance) inputs and outputs when power is not present at its VCC.

R924 provides default LOW input level for **U906a** during the host processor reset. **R920** is pull-up resistor for **CHRG_FLG** making it valid only during the time the battery charge controller **U909** is enabled.

U907 produces battery presence indicator by monitoring **BAT_ID** input from the battery pack. Its output would be at HIGH logic level any time the **BAT_ID** resistor is present and its pull-up is provided by **BAT_CHK** signal.

Low drop out voltage regulator **U901** (TOKO TK71733SCL) provides a regulated 3.3V supply for the USB data line pull up resistors, as well as a 3.3V supply for various components in the charger circuit and as an indicator that an external source is attached (**EXT_PWR_CD**). **U901** has reverse bias and overcurrent protection, built-in thermal shut-down and short circuit protection.

U901 provides power for **U906**, **U908**, and **U905** as well as the 3.3V voltage for pull-up resistor. It is also used to provide the indication of VBUS presence to the system (**EXT_PWR_CD**). **R904** is used to limit the current to the input pin of the system. **C915** is input bypass capacitor and **C922** is output filtering capacitor. **C910** is used to filter RF noise coming from the RF circuitry, and **C912** is bypass capacitor for internal reference.

Q907 is used to switch USB_VPU voltage and allow soft enumeration on the USB bus. **R909** provides default OFF condition for P-FET and **R905** provides fast discharge of the USB_SFTCN control line (during the RST or suspend initiation without battery presence).

U904 provides supply voltage for USB transceiver chip (it is a standard voltage regulator as known in the art). It is

enabled when VBUS is present and automatically shuts down the power when VBUS goes OFF. C921 and C913 are output filter capacitors. U904 can optionally be removed to save cost; R942 should then be populated to supply power to the USB transceiver chip. U904 should only be required if the transceiver chip does not meet USB suspend current requirements (and our device can wake-up from suspend by looking at only D+/D- line responses).

U905 and Q908 are mainly used to maintain L_BAT=VBAT, when VBUS is not present, and to keep L_BAT to at least 3.6V when VBUS is present (while charger is delivering current to the system) and battery voltage is less than 3.6V. It is also used to split total power dissipation into two (between the battery charge controller's main pass element and Q908) to allow for higher charging currents at all battery voltage levels.

Another important functionality of this circuitry is to allow proper USB enumeration when battery is low/dead or not present, by allowing the system to wake up within 15 mS when battery not present, or dead. Once the U909 delivers the whole programmed current, U905/Q908 will maintain the minimum preprogrammed voltage at L_BAT (3.5V in our case) by varying the drain-to-source resistance of Q908.

U905's positive input is used as a reference and is set by R934 and R913. C924 allows a slow ramp-up of LBAT so that the battery charge controller U909 can deliver full programmed current until Q908 requests voltage increase on L_BAT (if needed). Resistor dividers R916 and R915 are used to set the "minimum voltage" at L_BAT, while the R914 provides a pull-down resistor for the gate of Q908.

U907 provides the system with indication of battery presence. R927 and R929 are used to set the reference and R928 is pull-up resistor to open drain output of U907. BAT_ID is than presented to its negative input and NO_BAT_N is set accordingly.

The preferred values for the components in this circuit are as shown in FIGS. 7A-7C. These values will, of course, vary with the application and design parameters.

Software Embodiments

Rather than using only electronic hardware as shown above, the invention may also be implemented using a combination a hardware and software components, including programmable devices such as digital signal processors (DSPs), micro-controllers, field programmable gate arrays (FPGAs), application specific integrated circuits (ASICs) and the like. Such an embodiment could be implemented as shown in the flow chart of FIG. 8.

Like the embodiments described above, this method could be used to charge any rechargeable battery in a portable or similar electronic device. Any external power supply could be used, though the invention is most useful with power supplies of limited capacity.

As shown in FIG. 8, the method of the invention begins at step 90 by connecting the input of a battery charge controller 20 to the external power supply, preferably via a USB cable and connectors 16, and a cradle 10 to hold the portable device 18. The output of the battery charge controller 20 is connected in parallel, to the portable device 18 and the input of the semiconductor switch Q1, per step 92, and the output of said semiconductor switch Q1 is connected to the rechargeable battery 24 per step 94.

Next, the current output of the battery charge controller 20 is controlled in some manner, at step 96. As noted above this may be done in many ways, for example, a DAC (digital to analogue converter) output of a micro-controller could be used to send an appropriate signal to the current control input of the battery charge controller 20.

The voltage drop across the battery charge controller 20 is then measured at step 98. This task could also be performed in many ways. For example, many micro-controllers provided with integral ADCs (analogue to digital converters) which could be used to perform this function.

Because the current is controlled at step 96, and the voltage drop across the battery charge controller 20 is measured at step 98, this methodology can deduce what the power dissipation is for the battery charge controller 20. The method of the invention is therefore able to control the power dissipation by modulating the semiconductor switch Q1 in response to the voltage drop across the battery charge controller 20 at step 100, reducing the quantity of current supplied to the rechargeable battery 24 when the voltage drop is too great.

In this way, the total power dissipated by the battery charge controller 20 is controlled; the portable device 18 receiving the power it needs to operate and the rechargeable battery 24 receiving any additional available power.

The balance of the software code needed to perform this algorithm would be straightforward to one skilled in the art.

The method steps of the invention may be embodiment in sets of executable machine code stored in a variety of formats such as object code or source code, integrated with the code of other programs, implemented as subroutines, by external program calls or by other techniques as known in the art.

Even the hardware embodiments of the invention could be encoded in a software form such as the hardware development languages (HDL code) used to fabricate integrated circuits. This HDL or similar code could be stored on any electronic memory means such computer diskettes, CD-Roms, Random Access Memory (RAM) and Read Only Memory (ROM). As well, electronic signals representing this software code may also be transmitted via a communication network.

Options and Alternatives

While particular embodiments of the present invention have been shown and described, it is clear that changes and modifications may be made to such embodiments without departing from the true scope and spirit of the invention. For example:

1. the circuit of the invention could be used with any manner of power source including: conventional AC power supplies (often referred to as "bricks"), computer data busses such as USB ports, external battery packs, laptop power supplies, and DC outlets in automobiles and on aircraft;
2. any manner of electrical appliance could be charged with such a circuit including portable laptop computers, personal digital assistants (PDAs), cellular telephones, wireless email and paging devices; and
3. any manner of rechargeable battery could be used including single or multiple lithium-ion, nickel-cadmium, or other types of cells.

Again, such implementations would be clear to one skilled in the art from the teachings herein, and do not take away from the invention.

What is claimed is:

1. A portable electronic device, comprising:
 - a switch configured to control a supply of power to a rechargeable battery;
 - a controller configured to receive USB power from an external source and supply power to the portable electronic device; and
 - a sensing circuit configured to determine power supplied to the portable electronic device, the controller responsive to the sensing circuit and configured to control the switch to limit battery charging

15

from the external source such that sufficient power is provided for operation of the portable electronic device.

2. The portable electronic device of claim 1, wherein sufficient power is power required to meet the dynamic needs of the portable electronic device.

3. The portable electronic device of claim 1, wherein the supply of power is limited by limiting current.

4. The portable electronic device of claim 1, wherein the supply of power is limited by limiting voltage.

5. The portable electronic device of claim 1, wherein total power consumed by the device is provided by the USB source.

6. The portable electronic device of claim 1, wherein the controller comprises an external driving semiconductor for carrying supply current to the device and the switch, whereby load current passes through the external driving semiconductor in lieu of the controller.

7. The portable electronic device of claim 1, wherein the voltage sensing circuit comprises:

an operational amplifier for receiving a voltage signal from an output of the controller and a reference signal, and responds to the voltage signal being less than the reference voltage by reducing flow through the switch.

8. The portable electronic device of claim 1, wherein the voltage sensing circuit comprises an operational amplifier for comparing a voltage on an output of the controller to a reference value.

9. A portable electronic device including a graphical user interface and an interface for communicating with a communications network, comprising:

a switch configured to control a supply of power to a rechargeable battery;

a controller configured to receive USB power from an external source and supply power to the portable electronic device; and

a sensing circuit configured to determine power supplied to the portable electronic device,

the controller responsive to the sensing circuit and configured to control the switch to limit battery charging from the external source such that sufficient power is provided for operation of the portable electronic device.

10. The portable electronic device of claim 9, wherein the controller is configured to control the switch in response to the voltage drop to provide sufficient power for operation of the device.

11. The portable electronic device of claim 9, wherein the supply of power is limited by limiting current.

12. The portable electric device of claim 9, wherein the supply of power is limited by limiting voltage.

13. The portable electronic device of claim 9, wherein total power consumed by the device is provided by the USB source.

16

14. The portable electronic device of claim 9, wherein the controller comprises an external driving semiconductor for carrying supply current to the device and the switch, whereby load current passes through the external driving semiconductor in lieu of the controller.

15. The portable electronic device of claim 9, wherein the voltage sensing circuit comprises an operational amplifier.

16. The portable electronic device of claim 9, wherein the voltage sensing circuit comprises: an operational amplifier for receiving a voltage signal from an output of the controller and a reference signal, and responds to the voltage signal being less than the reference voltage by reducing the flow through the switch.

17. The portable electronic device of claim 9, wherein the voltage sensing circuit comprises an operational amplifier for comparing a voltage on an output of the controller to a reference value.

18. A circuit for a portable electronic device comprising: a switch configured to control a supply of power to a rechargeable battery;

a controller configured to receive USB power from an external source and supply power to the portable electronic device; and

a sensing circuit configured to determine power supplied to the portable electronic device,

the controller responsive to the sensing circuit and configured to control the switch to limit battery charging from the external source such that sufficient power is provided for operation of the portable electronic device.

19. The circuit of claim 18, wherein the controller limits power consumption by the device and is configured to control the switch in response to the voltage drop to provide sufficient power for operation of the device.

20. The circuit of claim 18, wherein the supply of power is limited by limiting current.

21. The circuit of claim 18, wherein the supply of power is limited by limiting voltage.

22. A method for controlling a USB power supply to a rechargeable battery, comprising the steps of:

sensing a voltage drop across a controller; and

responsive to the voltage drop, limiting battery charging from the USB power supply such that sufficient power is provided for operation of a device by modulating a switch to control a quantity of power to the rechargeable battery.

23. The method of claim 22, wherein the power is limited by limiting current.

24. The method of claim 22, wherein the power is limited by limiting voltage.

25. The method of claim 22, wherein total power consumed by the device is provided by the USB source.

26. The method of claim 22, wherein the rechargeable battery is associated with a portable electronic device.

* * * * *

UNITED STATES PATENT AND TRADEMARK OFFICE
CERTIFICATE OF CORRECTION

PATENT NO. : 8,541,983 B2
APPLICATION NO. : 13/175541
DATED : September 24, 2013
INVENTOR(S) : Dusan Veselic et al.

Page 1 of 2

It is certified that error appears in the above-identified patent and that said Letters Patent is hereby corrected as shown below:

In the Specification

In column 1, lines 4-5, delete the line break between “13/028,” and “361,” should read --13/028,361,--.

In column 2, lines 31-32, “To being with,” should read --To begin with,--.

In column 2, line 65, “one of large number” should read --one of a large number--.

In column 3, line 39, “battery charge controller 26;” should read --battery charge controller 20;--.

In column 3, line 44, “fail all together;” should read --fail altogether;--.

In column 4, line 4, “battery charge circuits 20” should read --battery charge controllers 20--.

In column 5, line 41, “build around” should read --built around--.

In column 7, lines 45-46, “battery charge controller 201” should read --battery charge controller 20--.

In column 7, line 61, “serves as external driving element” should read --serves as an external driving element--.

In column 8, lines 4-5, “(low-power. USB),” should read --(low-power USB),--.

In column 8, line 32, “ V_{Bus} ” should read -- V_{BUS} --.

In column 9, line 40, “when battery is dead” should read --when the battery is dead--.

In column 11, line 11, “LMS33460) Whose” should read --LMS33460) whose--.

Signed and Sealed this
Eighteenth Day of February, 2014



Michelle K. Lee
Deputy Director of the United States Patent and Trademark Office

U.S. Pat. No. 8,541,983 B2

In column 11, line 15, “-5.8V.” should read --~5.8V.--.

In column 11, lines 65-66, “hardware the rest of the system.” should read --hardware of the rest of the system.--.

In column 12, lines 23-24, “accomplished by the keeping” should read --accomplished by keeping--.

In column 12, line 25, “and than 100 mS” should read --and then 100 mS--.

In column 12, line 39, “R920 is pull-up resistor” should read --R920 is a pull-up resistor--.

In column 12, line 42, “U907 produces battery presence indicator” should read --U907 produces a battery presence indicator--.

In column 12, lines 57-58, “C915 is input bypass capacitor and C922 is output filtering capacitor.” should read --C915 is an input bypass capacitor and C922 is an output filtering capacitor.--.

In column 12, line 59, “C912 is bypass capacitor” should read --C912 is a bypass capacitor--.

In column 12, line 66, “voltage for USB transceiver chip” should read --voltage for a USB transceiver chip--.

In column 13, line 18, “when battery is low/dead” should read --when the battery is low/dead--.

In column 13, lines 19-20, “by allowing the system to the wake up within 15 mS when battery not present, or dead.” should read --by allowing the system to wake up within 15 mS when the battery is not present or dead.--.

In column 13, line 31, “with indication” should read --with an indication--.

In column 13, lines 32-33, “R928 is pull-up resistor” should read --R928 is a pull-up resistor--.

In column 13, lines 41-42, “combination a hardware” should read --combination of hardware--.

In column 14, lines 4-5, “converters) which could be used” should read --converters) could be used--.

In column 14, line 22, “invention may be embodiment” should read --invention may be embodied--.

In column 14, line 31, “such computer diskettes,” should read --such as computer diskettes,--.