

Electrolux air-o-chill

Blast Chiller/Freezers 100kg 20GN1/1

Chilling means bringing the temperature of cooked food from +90°C to +3°C in a short time lap which does not allow bacterial growth. Electrolux Blast Chillers/Freezers reduce temperature from +90°C to +3°C at food core in less than 90 minutes and down to -18°C in less than four hours: the model detailed on this sheet performs this cycle up to a 100 kg full load. After the Blast Chilling/freezing process a holding cycle starts automatically to respectively maintain food at +3 and -18 °C. Blast frozen food has a solid 6 months/1 year shelf life without loss of flavour, nutritional values and weight. The opportunity to prepare in a single shot the food to be used in different times during the week enables a better work scheduling and therefore a sensible reduction in labour costs.



OPERATING MODES

- Cruise: the chiller automatically sets the parameters for the quickest and best chilling (it works by probe).
- Soft Chilling (Air temperature -2°C).
- Hard Chilling (Air temperature -20°C).
- Shock freezing (Air temperature -35 °C.)
- Holding at +3°C or -18°C (automatically activated at the end of each cycle).
- All the probe-driven cycles feature ARTE (Algorithm for Remaining Time Estimation) to make planning the activities easier.
- Holding at +3°C (automatically activated at the end of each cycle).
- Turbo cooling: the chiller works continuously at the desired temperature. Ideal for continuous production.
- It is possible to operate by time or

by probe.

- The control unit provides several operating settings: time/core temperature according to NF and UK regulations, time/air temperature/probe personalised according to national regulations, sterilizing cycle: UV lamps built-in (on request), 3 single sensor core temperature probes (as accessory), ideal for meats, automatic defrosting and manual defrosting. All parameters are programmable.
- 3-sensor core probe as standard.
- The control unit provides two large displays to read out: time, core temperature, cycle countdown, alarms, service information.
- Two customizable cycles (P1 & P2) for each operating mode, allowing to set the time and air temperature. These programs can be converted into ice-cream specialized cycles (shape maintenance and holding).

- All information related to the different operating models are recorded: date, time, cycle, core temperature, holding temperature, HACCP accordance.
- An audible alarm starts when the cycle ends or terminates abnormally.

PERFORMANCE

- Blast Chilling cycle: 100 kg from +90°C up to + 3°C in less than 90 minutes.
- Blast Freezing cycle : 85 kg from 90°C up to -18 °C in less than four hours.
- Chilling and freezing times can vary according to food quantity, density, moisture contents and type of containers. Chilling capacity according to NF regulations is 72 kg.



Electrolux

**Electrolux air-o-chill
Blast Chiller/Freezers 100kg 20GN1/1**

CONSTRUCTION

- Automatic heated door frame.
- Internal and external finishing in 304 AISI stainless steel and back panel in stainless steel.
- High density polyurethane insulation, 60 mm thickness, HCFC free.
- Environmentally friendly: R404a as refrigerant fluid.
- Developed and produced in ISO 9001 and ISO 14001 certified factory.
- Inner cell with fully rounded corners.
- Door equipped with removable magnetic gasket with hygienic design.
- All motors and fan waterproof protected IP20.
- Evaporator with anti rust protection.

- Ventilator (fan) swinging hinged panel for access to the evaporator for cleaning.
- Hot gas defrosting system.
- Solenoid valves.
- 1 thermostatic expansion valve.
- Feet 200 mm high.
- Stand alone printer as optional, built in on request.
- PC connection on request, gate RS 485.

INSTALLATION

- No water connections required.
- Waste can be plumbed into drain, but can also be collected in optional waste container.

Installation diagram:

- C - Water drain
- I - Electrical connection
- Y - Connection for appliance lifting
- L - Remote electrical connection
- N - Cooling water inlet
- O - Cooling water outlet

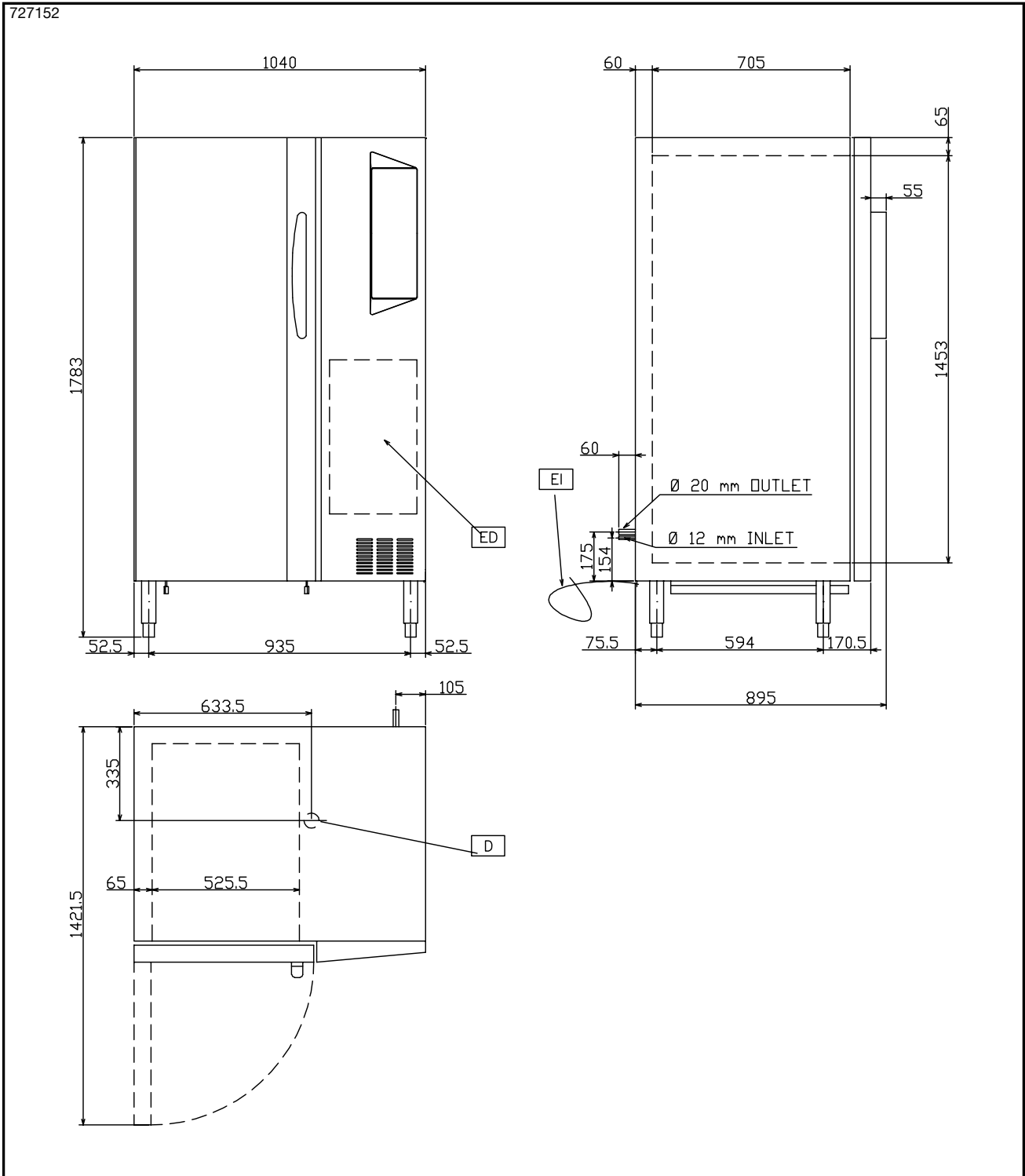
TECHNICAL DATA	
Type	AOFP201CRR 727152
Productivity per cycle - kg.	Blast freezer - 100 kg
NF Regulations - chilling / freezing	72, 72
UK Guide lines - chilling / freezing	100, 85
Cooling unit	Remote
Control type	Electronic
Thermostat	Electronic
Thermometers	Digital
External dimensions - mm	
width	1040
depth/with open doors	895, 1422
height	1783
N° and type of door	1
Door hinges	Left
Trays type	GN 1/1; 600x400
Max load capacity - trays h 65 mm - n°	20
N° defrost in 24 hrs.	6
Refrigerant type	R404a
Refrigeration power - W	5350
Refrigerant power at evaporation temperature - °C	-30
Power - kW	
installed-electric	0.88
Net weight - kg.	200
INCLUDED ACCESSORIES	
3-SENSOR PROBE FOR CHILLER+C/FREEZER	1
ACCESSORIES	
1 SINGLE SENSOR PROBE CHILLER+C/FREEZER	880089
2 SINGLE SENSOR PROBES CHILLER+C/FREEZER	880096
AIR REMOTE UNIT CHILL+C/FREEZER CW 100KG	880031
AIR/WATER REMOTE UNIT F.BC+BCF LW 100KG	880059
BANQ.TROLLEY-54PLATES-74MM PITCH-20GN1/1	922016
KIT 3 SINGLE SENSOR PROBES FOR BC/BCF	880269
KIT HACCP ADVANCED CONNECT. BC/BCF LW+CW	880183
KIT HACCP EKIS	922166
PAIR OF 1/1 GN AISI 304 S/S GRIDS	921101
PASTRY TROLLEY 16(400X600)80MM-20 1/1 LW	922068
PRINTER FOR HACCP BASIC VERSION	881532
RILSAN COATED GRID	881061
TROLLEY TRAY RACK F. 20X1/1GN,63MM PITCH	922007
TROLLEY TRAY RACK F.16X1/1GN,80MM PITCH	922010
WATER REMOTE UNIT FOR C/FREEZER CW 100KG	880035

HDBB030

2009-10-06

Subject to change without notice

**Electrolux air-o-chill
Blast Chiller/Freezers 100kg 20GN1/1**



LEGEND	D - Water drain	AOFP201CRR 727152	
	ED - Remote electrical connection	1/2"	
	EI - Electrical connection	●	
	RI - Remote refrigeration connection	400 V, 3N, 50	

HDBB030

2009-10-06

Subject to change without notice