

**Dometic** ■ The Satisfaction Network.

**HiPro**



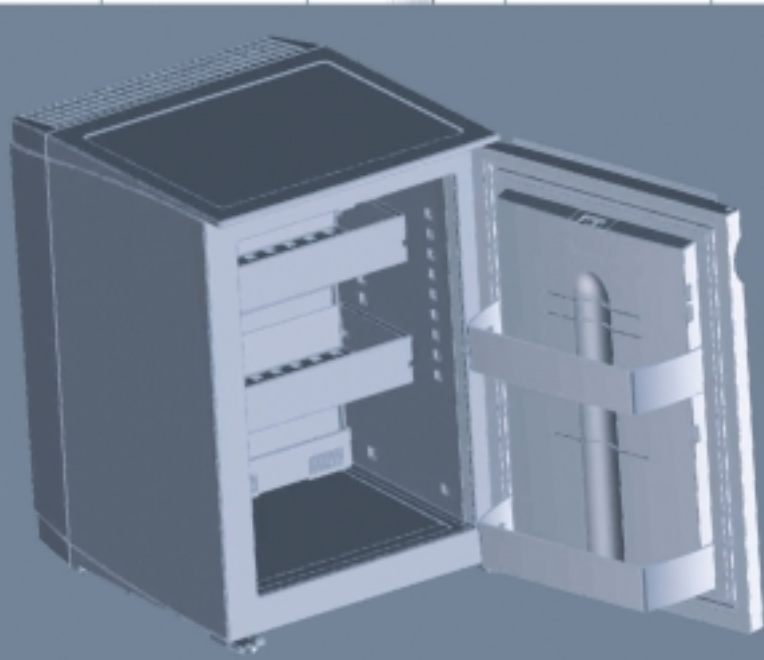
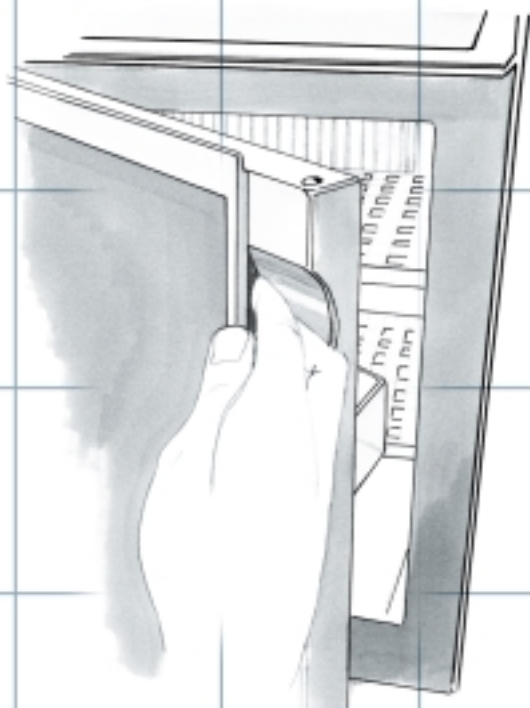
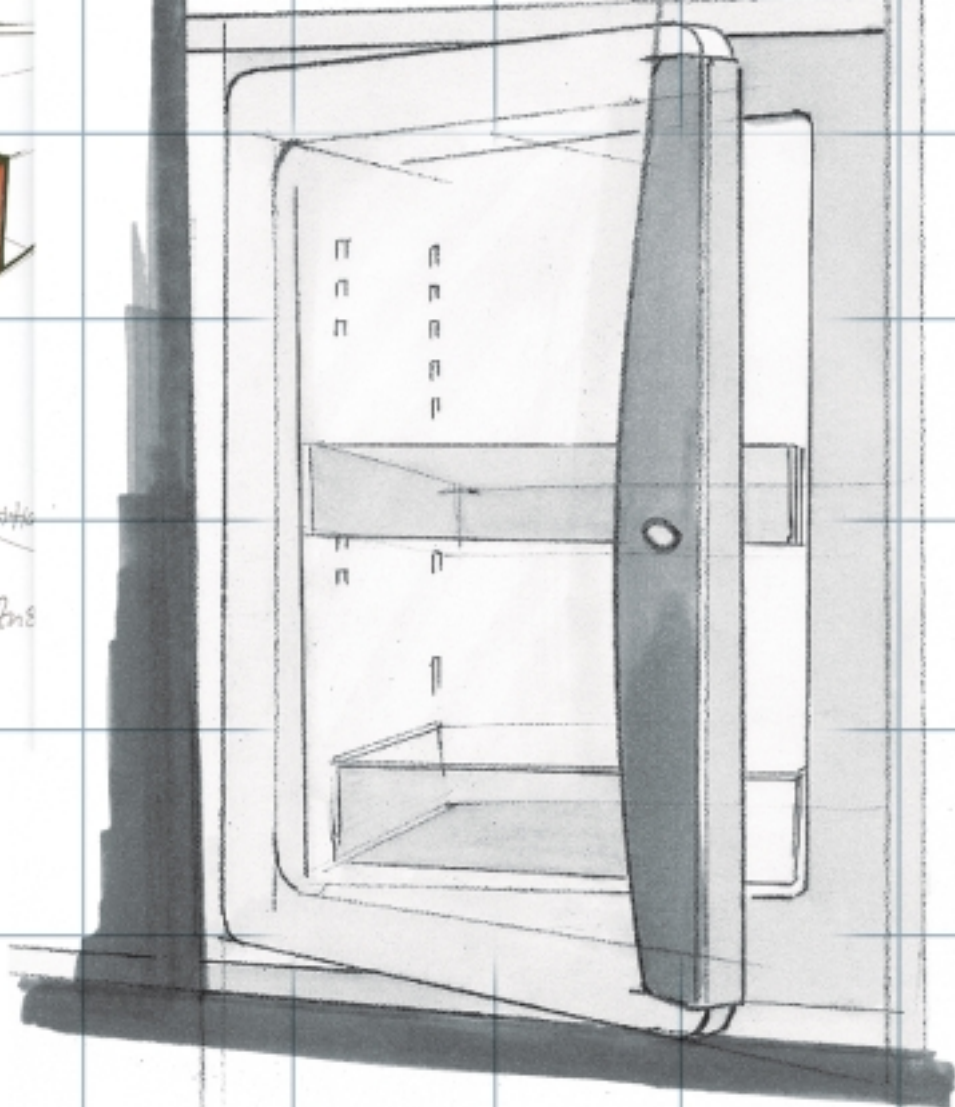
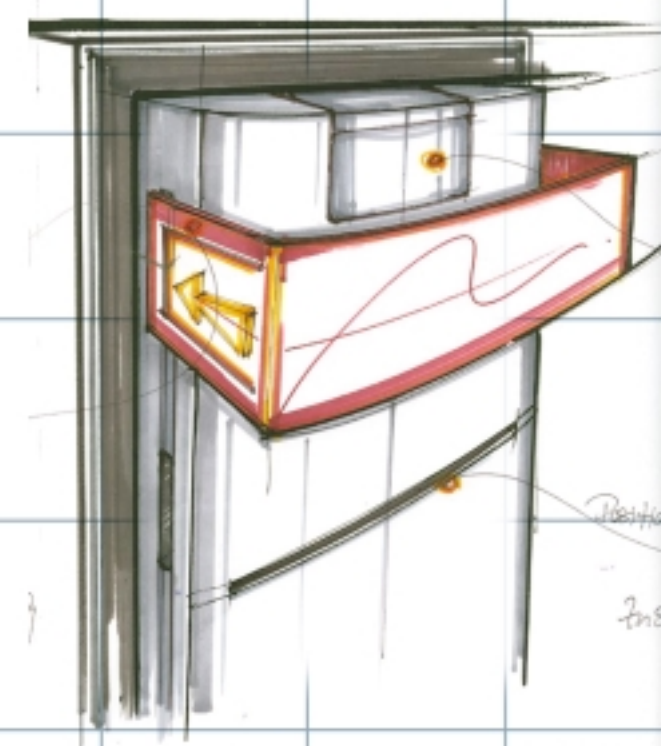
**D**

**ometic HiPro Refreshment Centers**

The Original has just been reinvented.



 **Dometic**® The Sign of Comfort



## **Dometic. HiPro Refreshment Centers.**

# ■ The only Refreshment Center featuring HiPro technology

HiPro is Dometic's new generation of in-room refreshment centers – the outcome of more than eighty years of continuous research and development. In order to carry innovative thinking forward into practice and achieve the highest level of customer satisfaction, it is necessary to gain a full understanding of user expectations – and then exceed them.

THE PROGRESSIVE HiPro DESIGN uniquely combines a variety of innovative technological features which do exactly that. In fact, they are so unique that we gave them a new name: HiPro technology.

**HiPro technology evokes a whole new quality dimension – something you can only expect from Dometic.**



- Innovative design
- Modular system for drawers, shelves and interior door racks
- Inner door in the “Bottle Body” design
- Fuzzy Logic II Energy Control
- Set-up diagnosis via LED
- Unique, sensor-controlled surveillance of the cooling unit (CUC System)
- Certified lowest energy consumption
- Sensor-controlled LED interior light
- Door opening control system
- Door lock



## ■ The Satisfaction Network

Hotel managers worldwide consider Dometic as their partner in professional in-room refreshment marketing. With more than 4 million units installed, Dometic is the undisputed industry leader. Our service network covers more than 180 countries and provides total support, from the planning and installation stages including expert on-site advice, to comprehensive after-sales assistance.

As system suppliers, we are committed to providing the maximum possible satisfaction to your guests, your managers and your investors. The expertise accumulated in the eight decades since Dometic's invention of absorption technology cannot be duplicated; but it can work to your benefit for greater profitability.

# HiPro

## Absorption

A highly efficient, noiseless cooling technology that uses no compressor or other moving parts, making it ideal for hotel rooms.



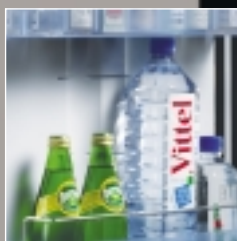
## Modular system for drawers and shelves

For optimal product presentation and convenient service; you choose the interior layout that's ideal for your specific assortment of beverages.



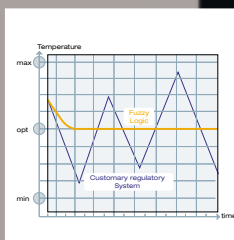
## Inner door featuring "Bottle Body" design

Ideal for 1.5-liter bottles.



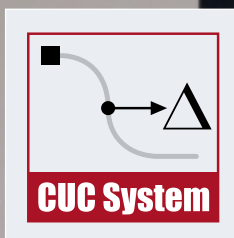
## Fuzzy Logic II

Our further improved, patented software regulates energy consumption and monitors the refreshment center's functions.



## CUC System

Unique, sensor-controlled monitoring of the cooling unit guarantees reliability with a continuous check of all functions.

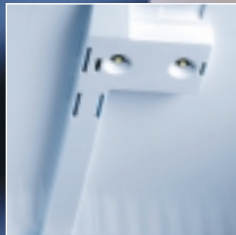




ISO 7371

**Certified lowest energy consumption**

Guaranteed best results for absorption-type refreshment centers (independently tested in compliance with ISO 7371 at 77° (25° C) outside temperature and 45° (7° C) cooling temperature).



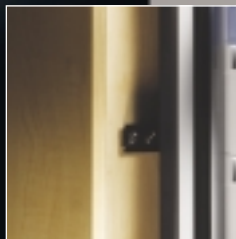
**Sensor-controlled LED interior light**

State-of-the-art illumination for a tempting presentation of goods.



**LED door opening control system**

Helps save costs by signalling at a glance whether a refreshment center needs to be checked or replenished.



**Sliding hinge**

A flexible connection of both refreshment center and furniture door to allow easy opening.



**Interchangeable door decor panel**

A variety of design themes for perfect integration into any room's interior.



**ISO 9001 and ISO 14001**

Superior quality and eco-friendliness, from production through operation, as certified by EMAS, as well as Eco Audit.





*The HiPro 3000 always makes a good impression when built in.*

## HiPro 3000

**An extremely compact refreshment center** with a sensationally low energy consumption – unique in the 30-liter class.

HiPro 3000 is available in Basic and Standard versions.

**Capacity** cu. ft. (liters)  
**Facings** (in 0.33 l cans)  
**Dimensions** H x W x D (mm)  
 - Built-in:

- Freestanding

**Consumption** (kWh/24hrs)

1.1 (30)  
 14

20<sup>3</sup>/<sub>4</sub> x 15<sup>5</sup>/<sub>16</sub> x 16<sup>7</sup>/<sub>16</sub>  
 (527 x 388 x 418)  
 22<sup>13</sup>/<sub>32</sub> x 15<sup>9</sup>/<sub>32</sub> x 16<sup>7</sup>/<sub>16</sub>  
 (569 x 388 x 418)

0.6

### OPTIONS

- Variable door hinge “clip & click”
- Infrared remote control
- Sliding hinge
- Choice of door decor panels

*The HiPro 3000 is available in two models: Basic and Standard.*





For freestanding installation, a back cover is available as an option for HiPro 4000.



For built-in use, the optional sliding hinge enables convenient, simultaneous door opening.

HiPro 4000

#### Dometic HiPro 4000

The mega star in the 40-liter class, Dometic's HiPro 4000 sets the standards of comfort and ensures maximum satisfaction.

It is available in Basic, Standard, Deluxe and Premium versions as well as in the "Vision" version.

<b>Capacity</b> cu. ft. (liters)	1.4 (40)
<b>Facings</b> (in 0.33 l cans)	24
<b>Dimensions</b> H x W x D (mm)	
- Built-in:	22 x 15 <sup>15/16</sup> x 17 <sup>13/16</sup> (559 x 405 x 452)
- Freestanding	23 <sup>5/8</sup> x 15 <sup>15/16</sup> x 18 <sup>9/16</sup> (601 x 405 x 472)
<b>Consumption</b> (kWh/24hrs)	0.7

#### OPTIONS

- Variable door hinge "clip & click"
- Infrared remote control
- Back cover
- Vision glass door
- Sliding hinge
- Choice of door decor panels

The HiPro 4000 is available in five models: Basic, Standard, Deluxe, Premium and Vision.



Space for 30 facings means a high degree of flexibility to attractively present your selection of products.

## HiPro 6000

### Dometic HiPro 6000

Providing lots of space to effectively present a comprehensive assortment of beverages and snacks, the HiPro 6000 is available in Basic and Standard versions.

**Capacity** cu. ft. (liters) 2.1 (60)  
**Facings** (in 0.33 l cans) 30  
**Dimensions** H x W x D (mm)

- Built-in: 22<sup>3</sup>/<sub>8</sub> x 19<sup>5</sup>/<sub>16</sub> x 18<sup>11</sup>/<sub>16</sub>  
 (568 x 491 x 475)  
 - Freestanding: 24<sup>1</sup>/<sub>32</sub> x 19<sup>5</sup>/<sub>16</sub> x 18<sup>11</sup>/<sub>16</sub>  
 (610 x 490 x 474.5)

**Consumption** (kWh/24hrs) 0.9

### OPTIONS

- Variable door hinge "clip & click"
- Infrared remote control
- Sliding hinge
- Choice of door decor panels

The HiPro 6000 is available in two models: Basic and Standard.





*Dometic's HiPro "Vision" can be harmoniously integrated into the interior decoration of any hotel room – simply a great design!*

HiPro Vision

**Great design from every angle:** With its unique clear view door, this HiPro 4000 refreshment center version puts a particular spotlight on the displayed goods.

HiPro "Vision" is available with pull-out shelves or drawers.

**Capacity** cu. ft. (liters) 1.4 (40)  
**Facings** (in 0.33 l cans) 12  
**Dimensions** H x W x D (mm)  
 - Built-in: 22 x 15<sup>15</sup>/<sub>16</sub> x 18<sup>5</sup>/<sub>16</sub>  
 (559 x 405 x 465)  
 - Freestanding with back cover and feet 23<sup>11</sup>/<sub>16</sub> x 15<sup>15</sup>/<sub>16</sub> x 19<sup>3</sup>/<sub>32</sub>  
 (601 x 405 x 485)

**OPTIONS**

- Variable door hinge "clip & click"
- Infrared remote control
- Back cover

## ■ Modular system to meet individual preferences

### BASIC

Equipped with 2 long pull-out shelves and a flat inner door.



### STANDARD

Equipped with 2 short pull-out shelves and an inner door with 2 multi-functional racks – one of them equipped with a bottle holder for large bottles, the other is for miniature bottles. Inner door features “Bottle Body” design for 1.5-liter bottles.



### DELUXE

Equipped with 2 long pull-out drawers and a flat inner door.  
Only available for HiPro 4000.



### PREMIUM

Equipped with 2 short pull-out drawers and an inner door with 2 multi-functional racks – one of them equipped with a bottle holder for large bottles, the other is for miniature bottles. Inner door features “Bottle Body” design for 1.5-liter bottles. Only available for HiPro 4000.

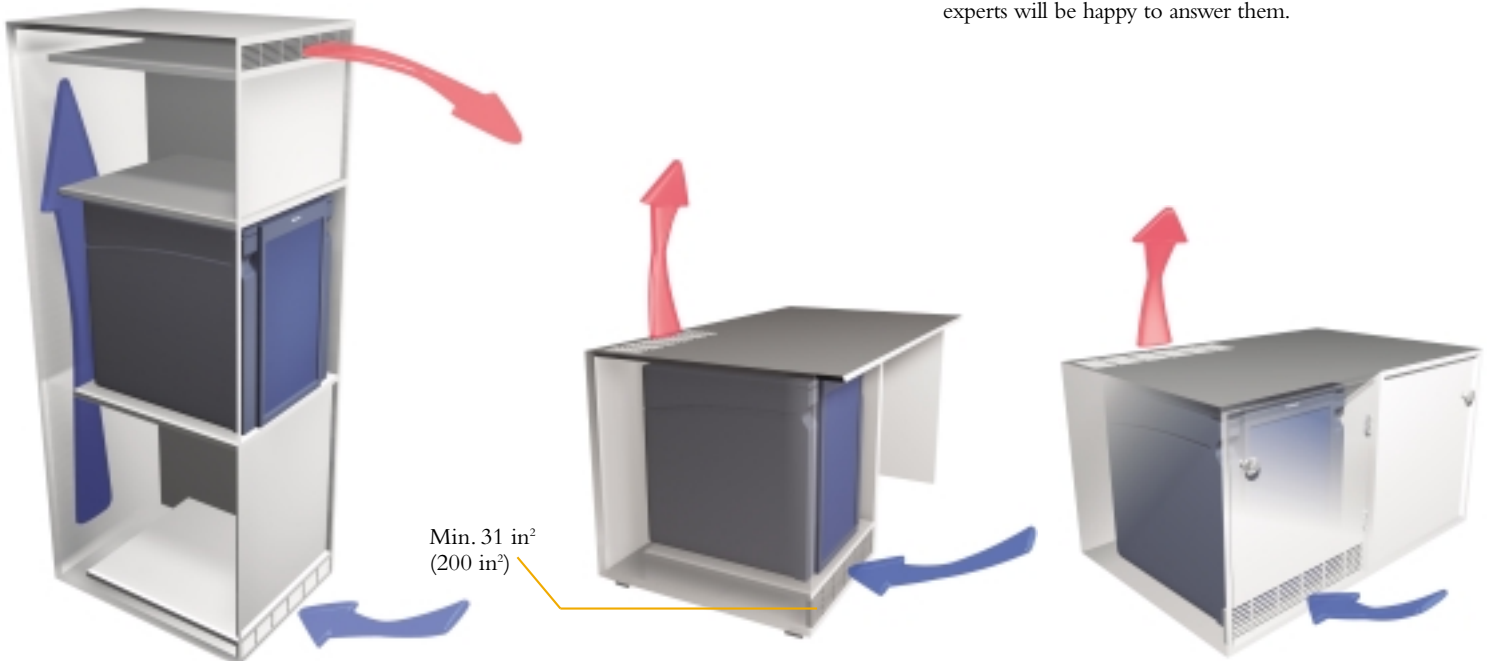




## ■ Ventilation

If you are considering integrating a Dometic refreshment center into the furniture, don't forget that the cooling unit needs fresh air! These sketches show various ways to integrate and ventilate a unit. The

open cross-section for fresh air supply and extracted air must be at least 31 square inches (200 cm<sup>2</sup>), and the air flow around the cooling unit should be unrestricted. If you have any questions, Dometic's experts will be happy to answer them.



■ Sufficient ventilation can be accomplished even in taller furniture. For proper cooling, the air needs to flow freely around the cooling unit and exit freely at the top.

■ The opening for supply air can also be built into the furniture base, but the footprint must not prevent the air from passing the cooling unit freely.

■ Should you want to place the unit on the floor panel of your furniture, be sure to use the optional 1-5/8" (42 mm) feet. These and an air grille integrated in the furniture door ensure sufficient ventilation. Both doors can be connected with a slide hinge which compensates for the different pivot points.



## ■ Dometic.

### Your system supplier.

DOMETIC is a leading international supplier of special refrigerators as well as other systems and products designed to meet the specific needs of discerning users for increased comfort away from home. They are developed and manufactured for use in leisure applications such as recreational vehicles and pleasure boats, but Dometic also supplies special refrigeration for medical and hospital applications.

Dometic is organized in two business areas, RV and Pleasure Boat Systems, and Special Refrigeration Systems. Dometic has production facilities in 10 countries, its own sales and marketing operations in 35 countries, plus 65 distributors globally. In 2002 approximately 4,000 people were employed by Dometic.



**Dometic** ■ The Satisfaction Network.  
1-800-301-8118 • [www.minibar.com](http://www.minibar.com)



[www.dometic.com](http://www.dometic.com)

 **Dometic**® *The Sign of Comfort*

*In U.S.A.*

**Dometic**

P.O. Box 490, Elkhart, IN 46515

Phone: (574) 294-8665 • Fax: (574) 294-3369

*In Canada:*

**Dometic**

46 Zatonski - Unit 2, Brantford, ON N3T 5L8

Phone: (519) 720-9578 • Fax: (519) 720-9590