

MATSUSHITA Compressor

MODEL# S30C50KAU6

Single Phase
R-134a

115 V
60 Hz

Voltage Range 103 Volts to 127 Volts @ 60 Hz
Application Low Back Pressure
Compressor Cooling Static Cooling

Refrigerant Control . . . Capillary Tube
Evaporator
Temp. Range -31°F to 23°F / -35°C to -5°C

Rated Performance Data

Capacity 238 Btu/h $\pm 10\%$ *
E.E.R. 2.94 Btu/Wh $\pm 10\%$ *
Current 1.17 Amps *

Nominal Motor Data Motor Input 81 Watts*
 Rated Current . . . 1.17 Amps
 Type RSIR, PTC relay

Locked Rotor 6.12 Amps
Start Current 11.50 Amps
Coil Resistances Run 8.16 Ohms
 @ 68°F (20°C) Start . . . 10.52 Ohms

*Test Conditions for Performance Specifications

Test Oil Freol α 22
Shell Temp 170.0°F / 76.0°C
Condensing Temp 130.0°F / 54.4°C
Evaporating Temp -10.0°F / -23.3°C
Ambient Temp 90.0°F / 32.2°C
Gas Superheat 90.0°F / 32.2°C
Liquid Sub-Cooling 90.0°F / 32.2°C

Electrical Accessories

Overload Protector
Nominal Operating Characteristics

Model Name T145AH4-1
Manufacturer Matsushita
Temperature To Open: 293°F $\pm 9^\circ$ F / 145°C $\pm 5^\circ$ C
 Close: 176°F $\pm 27^\circ$ F / 80°C $\pm 15^\circ$ C
Trip Current @212°F (100°C) 2.2 to 3.2 Amps
 @77°F (25°C) 8.5 Amps @ 13 sec. max.

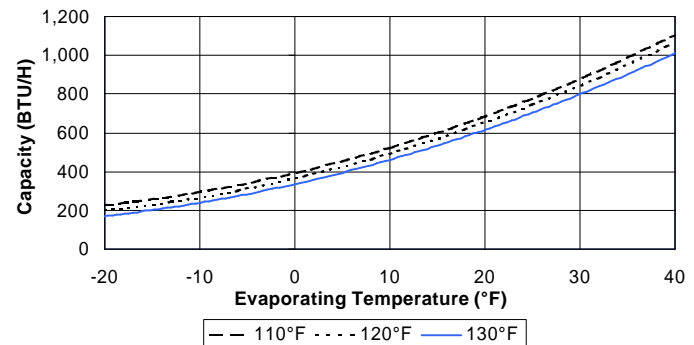
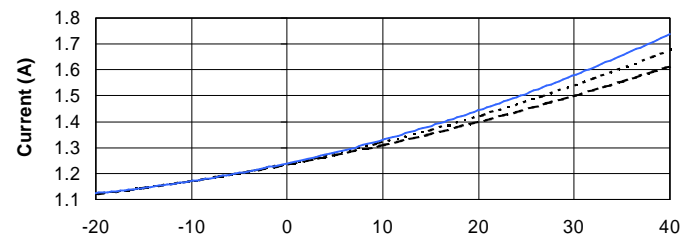
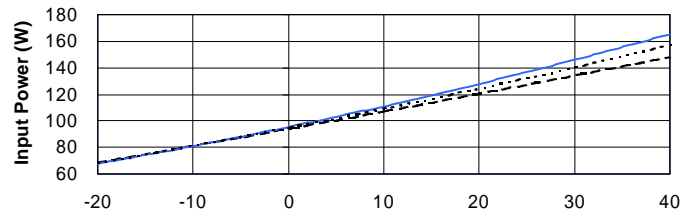
P.T.C. Starting Device[†]
Nominal Operating Characteristics

Model Name PTH490C-AS4R7
Manufacturer Murata Mfg.
Base resistance
@ 77°F(25°C) $\pm 20\%$ 4.7 Ohms
Power Consumption (max) 3.3 Watts
Operation time 1.3 to 3.0 seconds
Recovery time (max) 65 seconds

Run Capacitor — μ F — V

[†]Although these accessories are listed by UL/CSA for use with this compressor, Matsushita assumes no responsibility whatsoever for these or any other components sourced by the refrigeration system manufacturer from third parties.

Performance Curves



9 - Point Data

Condensing Temp.	Rating	Evaporating Temp.		
		-10°F	+10°F	+30°F
130°F	Btu/h	238	461	799
	Watts	81	111	146
	Amps	1.17	1.33	1.58
	E.E.R.	2.94	4.15	5.47
120°F	Btu/h	266	492	843
	Watts	81	109	140
	Amps	1.17	1.32	1.54
	E.E.R.	3.28	4.51	6.02
110°F	Btu/h	294	522	877
	Watts	81	107	134
	Amps	1.17	1.31	1.50
	E.E.R.	3.63	4.88	6.54



Panasonic Industrial Company
Refrigeration Products Department
Tel: 201 - 392 - 4249
Fax: 201 - 392 - 4315

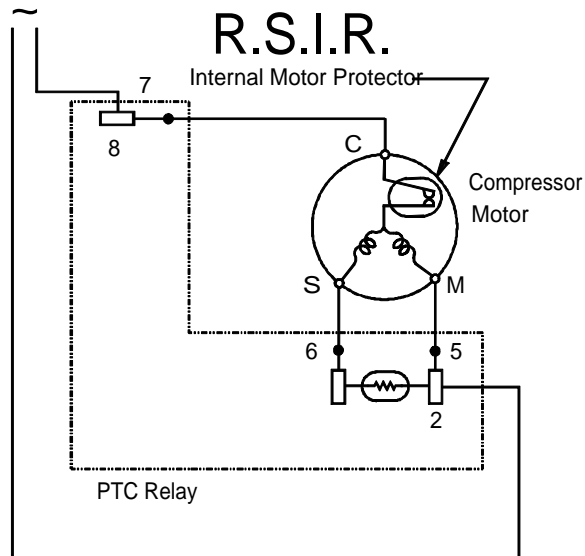
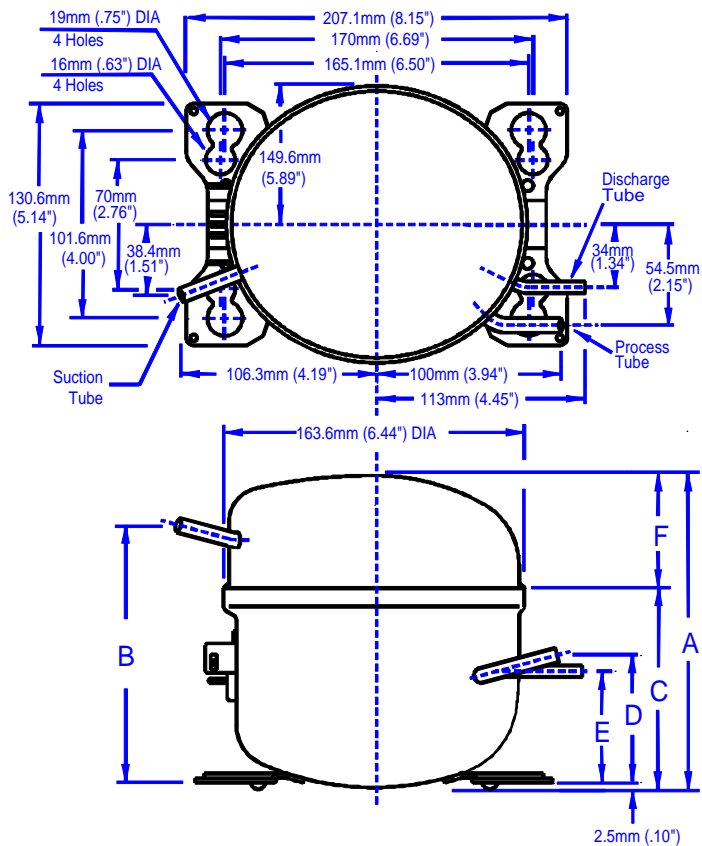
Rev#1-5/9

MATSUSHITA Compressor

MODEL# S30C50KAU6

Single Phase
R-134a

115 V
60 Hz



Dimensions*

	mm	inches
A	158.6	6.24
B	55.8	2.20
C	102.8	4.05
D	64.1	2.52
E	55.3	2.18
F	134.3	5.29

* All dimensions are for reference only

This document sets forth certain operational parameters and conditions for operation of this product. If this product is operated outside of the parameters and conditions stated herein, buyer assumes sole and full responsibility and shall indemnify seller with respect to all product failures and all consequences thereof. Operation of the product outside of the parameters and conditions specified herein shall serve to invalidate all seller warranties, if any, with respect to the product. This document is for reference only. For specifications, please contact Panasonic's engineering department.

Tubes	Tube O.D.	Wall	Material
Suction	0.33 in. / 8.3 mm	0.035 in. / 0.9 mm	Copper
Process	0.3125 in. / 7.94 mm	0.028 in. / 0.7 mm	Copper
Discharge	0.25 in. / 6.35 mm	0.028 in. / 0.7 mm	Steel

U.L. File # SA 4615
C.S.A. File #'s LR - 36593

General Data	Oil Charge	Net Weight With Oil	Approved Oils	Residual Moisture	Impurities	Displacement
	215 cc ± 5 cc / 13.1 cu.in. ± 0.3 cu.in.	13.2 lbs, 6.0 kg	FREOL α 22, FREOL α 22E	120 mg max.	7 mg max.	3.01 cc. / 0.184 cu. in.

Panasonic®

Panasonic Industrial Company
Refrigeration Products Department
Tel: 201 - 392 - 4249
Fax: 201 - 392 - 4315

Rev#1-5/9