

# MATSUSHITA Compressor

## MODEL# S43C77JAU6

Single Phase  
R-134a

115 V  
60 Hz

Voltage Range . . . . . 103 Volts to 127 Volts @ 60 Hz  
Application . . . . . Low Back Pressure  
Compressor Cooling . . . . Static Cooling

Refrigerant Control . . . Capillary Tube  
Evaporator  
Temp. Range . . . . . -31°F to 23°F / -35°C to -5°C

### Rated Performance Data

Capacity . . . . . 410 Btu/h  $\pm 10\%$  \*  
E.E.R. . . . . 3.90 Btu/Wh  $\pm 10\%$  \*  
Current . . . . . 0.94 Amps \*

Nominal Motor Data      Motor Input . . . . . 105 Watts\*  
   Rated Current . . . . 0.86 Amps  
   Type . . . . . RSCR, PTC relay

Locked Rotor . . . . . 7.50 Amps  
Start Current . . . . . 12.50 Amps  
Coil Resistances            Run . . . . 5.10 Ohms  
@ 68°F (20°C)                Start . . . 11.39 Ohms

### \*Test Conditions for Performance Specifications

Test Oil . . . . . Freol  $\alpha$  22  
Shell Temp . . . . . 170.0°F / 76.0°C  
Condensing Temp . . . . . 130.0°F / 54.4°C  
Evaporating Temp . . . . . -10.0°F / -23.3°C  
Ambient Temp . . . . . 90.0°F / 32.2°C  
Gas Superheat . . . . . 90.0°F / 32.2°C  
Liquid Sub-Cooling . . . . . 90.0°F / 32.2°C

### Electrical Accessories

Overload Protector  
Nominal Operating Characteristics

Model Name                    T135AH3-1  
Manufacturer                 Matsushita  
Temperature To . . . . . Open: 275°F  $\pm$  9°F / 135°C  $\pm$  5°C  
   Close: 176°F  $\pm$  27°F / 80°C  $\pm$  15°C  
Trip Current . . . . . @212°F (100°C) 3.5 to 4.5 Amps  
   @77°F (25°C) 11.7 Amps @ 13 sec. max.

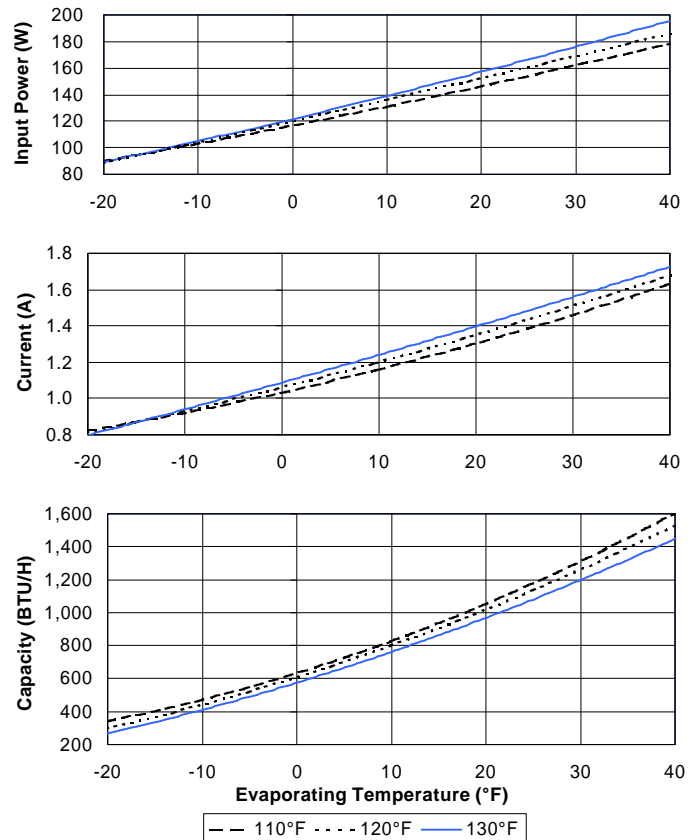
P.T.C. Starting Device<sup>†</sup>  
Nominal Operating Characteristics

| Model Name              | PTH490D-AS4R7 | PTH7M4R7MD2 |         |
|-------------------------|---------------|-------------|---------|
| Manufacturer            | Murata Mfg.   | Murata Mfg. |         |
| Base resistance         |               |             |         |
| @ 77°F(25°C) $\pm 20\%$ | 4.7           | 4.7         | Ohms    |
| Power Consumption (max) | 3.3           | 3.0         | Watts   |
| Operation time          | 1.3 to 3.0    | 0.7 to 2.2  | seconds |
| Recovery time (max)     | 65            | 70          | seconds |

Run Capacitor                    12  $\mu$ F 180 V (min.)

<sup>†</sup>Although these accessories are listed by UL/CSA for use with this compressor, Matsushita assumes no responsibility whatsoever for these or any other components sourced by the refrigeration system manufacturer from third parties.

### Performance Curves



### 9 - Point Data

| Condensing Temp. | Rating | Evaporating Temp. |       |       |
|------------------|--------|-------------------|-------|-------|
|                  |        | -10°F             | +10°F | +30°F |
| 130°F            | Btu/h  | 410               | 761   | 1,198 |
|                  | Watts  | 105               | 139   | 176   |
|                  | Amps   | 0.94              | 1.24  | 1.56  |
|                  | E.E.R. | 3.90              | 5.47  | 6.81  |
| 120°F            | Btu/h  | 440               | 799   | 1,260 |
|                  | Watts  | 104               | 136   | 169   |
|                  | Amps   | 0.93              | 1.20  | 1.51  |
|                  | E.E.R. | 4.23              | 5.88  | 7.46  |
| 110°F            | Btu/h  | 471               | 826   | 1,311 |
|                  | Watts  | 103               | 131   | 162   |
|                  | Amps   | 0.92              | 1.16  | 1.46  |
|                  | E.E.R. | 4.57              | 6.31  | 8.09  |



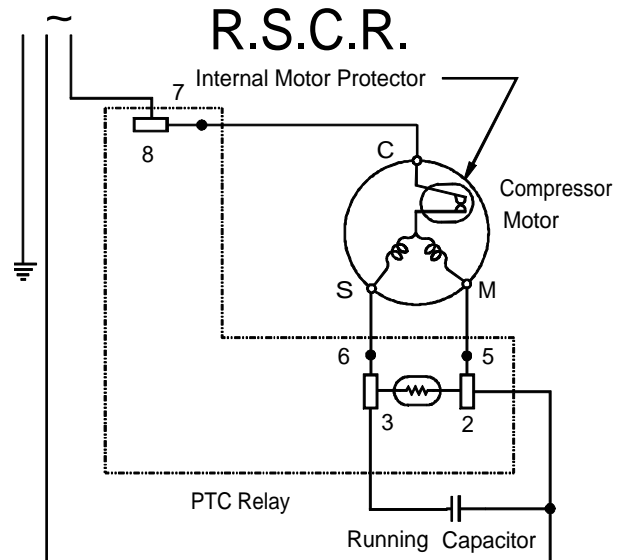
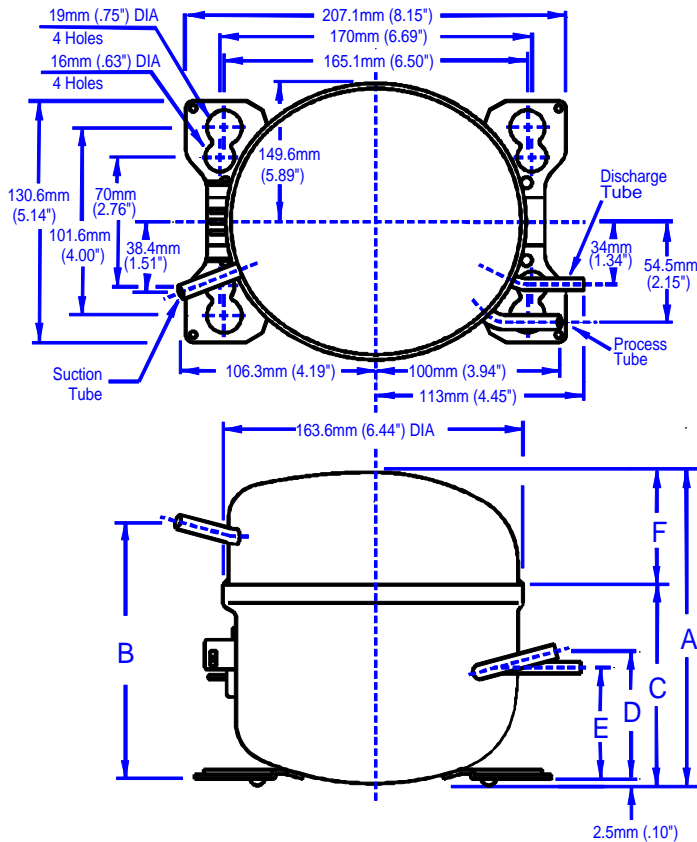
Panasonic Industrial Company  
Refrigeration Products Department  
Tel: 201 - 392 - 4249  
Fax: 201 - 392 - 4315

# MATSUSHITA Compressor

## MODEL# S43C77JAU6

Single Phase  
R-134a

115 V  
60 Hz



### Dimensions\*

|   | mm    | inches |
|---|-------|--------|
| A | 168.6 | 6.64   |
| B | 60.8  | 2.39   |
| C | 107.8 | 4.24   |
| D | 69.1  | 2.72   |
| E | 60.3  | 2.37   |
| F | 139.3 | 5.48   |

\* All dimensions are for reference only

This document sets forth certain operational parameters and conditions for operation of this product. If this product is operated outside of the parameters and conditions stated herein, buyer assumes sole and full responsibility and shall indemnify seller with respect to all product failures and all consequences thereof. Operation of the product outside of the parameters and conditions specified herein shall serve to invalidate all seller warranties, if any, with respect to the product. This document is for reference only. For specifications, please contact Panasonic's engineering department.

| Tubes     | Tube O.D.            | Wall               | Material |
|-----------|----------------------|--------------------|----------|
| Suction   | 0.33 in. / 8.3 mm    | 0.035 in. / 0.9 mm | Copper   |
| Process   | 0.3125 in. / 7.94 mm | 0.028 in. / 0.7 mm | Copper   |
| Discharge | 0.25 in. / 6.35 mm   | 0.028 in. / 0.7 mm | Steel    |

U.L. File # . . . . . SA 4615  
C.S.A. File #'s . . . . . LR - 36593

| General Data | Oil Charge                               | Net Weight With Oil | Approved Oils           | Residual Moisture | Impurities | Displacement             |
|--------------|--|---------------------|-------------------------|-------------------|------------|--------------------------|
|              | 215 cc ± 5 cc / 13.1 cu.in. ± 0.3 cu.in. | 15.0 lbs, 6.8 kg    | FREOL α 22, FREOL α 22E | 120 mg max.       | 7 mg max.  | 4.33 cc. / 0.264 cu. in. |

# Panasonic®

Panasonic Industrial Company  
Refrigeration Products Department  
Tel: 201 - 392 - 4249  
Fax: 201 - 392 - 4315

Rev#1-5/9