

MATSUSHITA Compressor

MODEL# S35C65KAU6

Single Phase
R-134a

115 V
60 Hz

Voltage Range 103 Volts to 127 Volts @ 60 Hz
Application Low Back Pressure
Compressor Cooling Static Cooling

Refrigerant Control . . . Capillary Tube
Evaporator
Temp. Range -31°F to 23°F / -35°C to -5°C

Rated Performance Data

Capacity 290 Btu/h $\pm 10\%$ *
E.E.R. 3.29 Btu/Wh $\pm 10\%$ *
Current 1.21 Amps *

Nominal Motor Data Motor Input 88 Watts*
 Rated Current . . . 1.22 Amps
 Type RSIR, PTC relay

Locked Rotor 7.13 Amps
Start Current 13.00 Amps
Coil Resistances Run 4.95 Ohms
 @ 68°F (20°C) Start . . . 9.05 Ohms

*Test Conditions for Performance Specifications

Test Oil Freol α 22
Shell Temp 170.0°F / 76.0°C
Condensing Temp 130.0°F / 54.4°C
Evaporating Temp -10.0°F / -23.3°C
Ambient Temp 90.0°F / 32.2°C
Gas Superheat 90.0°F / 32.2°C
Liquid Sub-Cooling 90.0°F / 32.2°C

Electrical Accessories

Overload Protector
Nominal Operating Characteristics

Model Name T135AH3-1
Manufacturer Matsushita
Temperature To Open: 275°F $\pm 9^\circ$ F / 135°C $\pm 5^\circ$ C
 Close: 176°F $\pm 27^\circ$ F / 80°C $\pm 15^\circ$ C
Trip Current @212°F (100°C) 3.5 to 4.5 Amps
 @77°F (25°C) 11.7 Amps @ 13 sec. max.

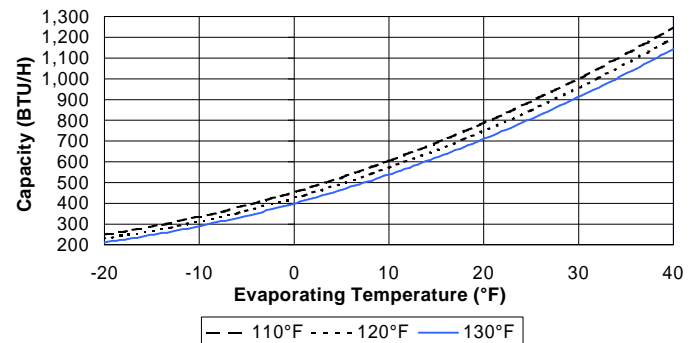
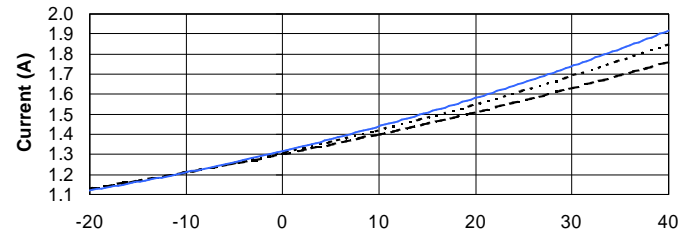
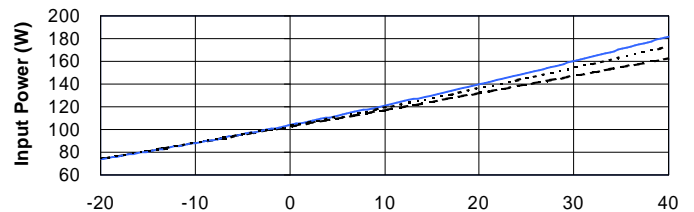
P.T.C. Starting Device[†]
Nominal Operating Characteristics

Model Name PTH490C-AS4R7
Manufacturer Murata Mfg.
Base resistance
 @ 77°F(25°C) $\pm 20\%$ 4.7 Ohms
Power Consumption (max) 3.3 Watts
Operation time 1.3 to 3.0 seconds
Recovery time (max) 65 seconds

Run Capacitor — μ F — V

[†]Although these accessories are listed by UL/CSA for use with this compressor, Matsushita assumes no responsibility whatsoever for these or any other components sourced by the refrigeration system manufacturer from third parties.

Performance Curves



9 - Point Data

Condensing Temp.	Rating	Evaporating Temp.		
		-10°F	+10°F	+30°F
130°F	Btu/h	290	539	912
	Watts	88	121	160
	Amps	1.21	1.44	1.74
	E.E.R.	3.29	4.45	5.70
120°F	Btu/h	311	570	956
	Watts	88	119	154
	Amps	1.21	1.42	1.69
	E.E.R.	3.53	4.79	6.21
110°F	Btu/h	335	604	1,000
	Watts	88	117	147
	Amps	1.21	1.40	1.63
	E.E.R.	3.81	5.16	6.80



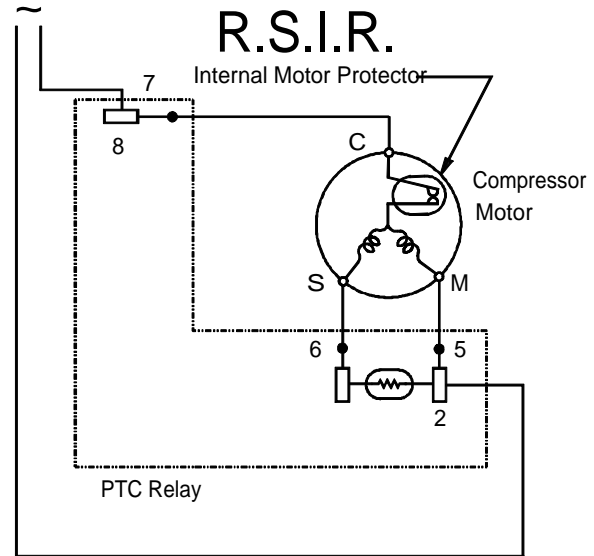
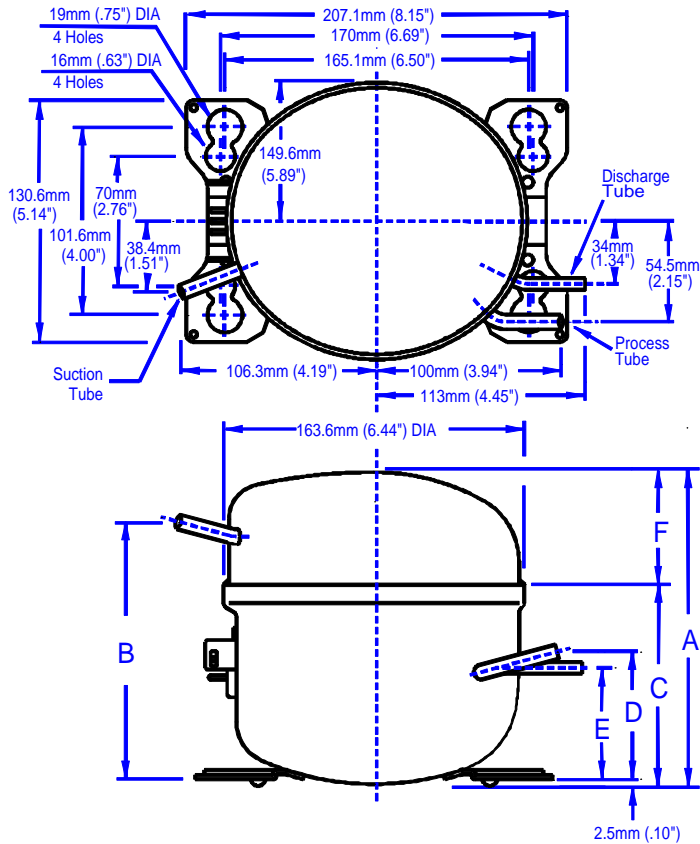
Panasonic Industrial Company
Refrigeration Products Department
Tel: 201 - 392 - 4249
Fax: 201 - 392 - 4315

MATSUSHITA Compressor

MODEL# S35C65KAU6

Single Phase
R-134a

115 V
60 Hz



Dimensions*

	mm	inches
A	168.6	6.64
B	60.8	2.39
C	107.8	4.24
D	69.1	2.72
E	60.3	2.37
F	139.3	5.48

* All dimensions are for reference only

This document sets forth certain operational parameters and conditions for operation of this product. If this product is operated outside of the parameters and conditions stated herein, buyer assumes sole and full responsibility and shall indemnify seller with respect to all product failures and all consequences thereof. Operation of the product outside of the parameters and conditions specified herein shall serve to invalidate all seller warranties, if any, with respect to the product. This document is for reference only. For specifications, please contact Panasonic's engineering department.

Tubes	Tube O.D.	Wall	Material
Suction	0.33 in. / 8.3 mm	0.035 in. / 0.9 mm	Copper
Process	0.3125 in. / 7.94 mm	0.028 in. / 0.7 mm	Copper
Discharge	0.25 in. / 6.35 mm	0.028 in. / 0.7 mm	Steel

U.L. File # SA 4615
C.S.A. File #'s LR - 36593

General Data	Oil Charge
Oil Charge	215 cc ± 5 cc / 13.1 cu.in. ± 0.3 cu.in.
Net Weight With Oil	14.5 lbs, 6.6 kg
Approved Oils	FREOL α 22, FREOL α 22E
Residual Moisture	120 mg max.
Impurities	7 mg max.
Displacement	3.56 cc. / 0.217 cu. in.

Panasonic®

Panasonic Industrial Company
Refrigeration Products Department
Tel: 201 - 392 - 4249
Fax: 201 - 392 - 4315

Rev#1-5/9