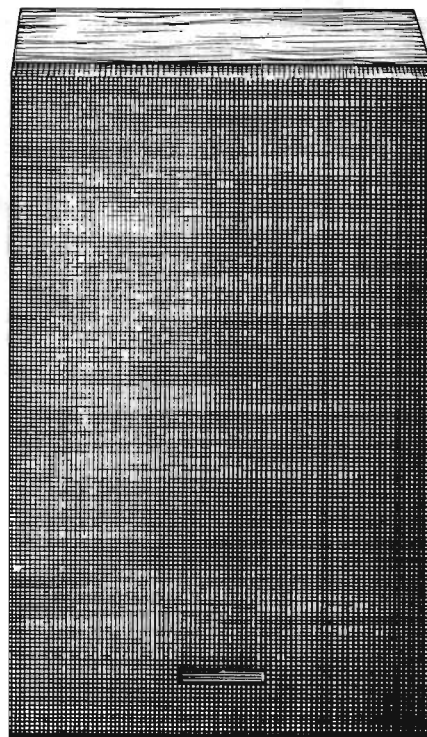
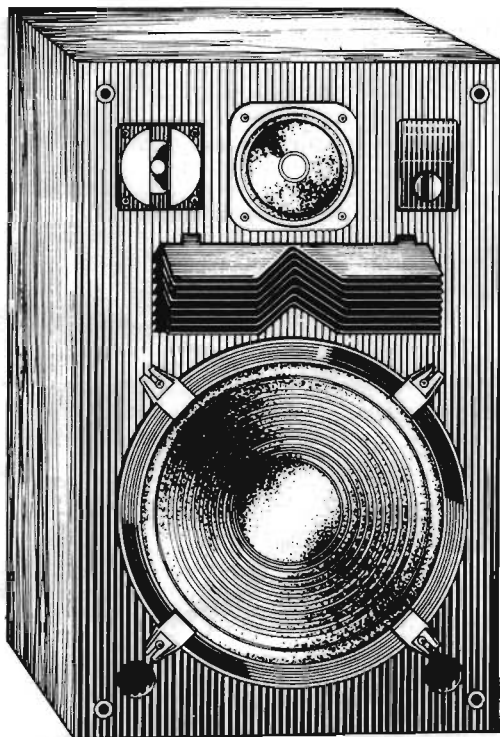


The Harman Kardon Model S200P

Manual No. 26A

4-WAY 4-SPEAKER SYSTEM

Technical Manual



harman/kardon

240 CROSSWAYS PARK WEST, WOODBURY, N.Y. 11797
PRINTED IN JAPAN 1112-H15226A6 P-07819

SPECIFICATIONS

Speakers		Impedance	8 Ω
Woofer	330 mm (13") Cone Type x 1	Sensitivity	96 dB/W(at 1 m)
Midrange	121 mm (4-3/4") Cone Type x 1	Frequency Response	27 Hz to 22,000 Hz
Tweeter	154 mm x 51 mm (6-1/16" x 2") Horn Type with Diffuser x 1	Crossover Frequencies	2,500 Hz, 6,000 Hz, 15,000 Hz
Super Tweeter	50 mm (2") Cone Type x 1	Dimensions	W 408 mm (16-1/16")
Max. Power Input	200 Watts	H	648 mm (25-1/2")
Nominal Power Input	100 Watts	D	270 mm (10-5/8")
		Weight	14.8 kg (32.6 lbs.)

Specifications and components subject to change without notice.
Overall performance will be maintained or improved.

DISASSEMBLY PROCEDURES

SPEAKER (WOOFER) REMOVAL

1. Pull up front grille.
2. Remove four screws **A** fixing the holder to the speaker box.
3. Remove four screws **B** fixing the speaker (woofer) to the speaker box.
4. Disconnect the leads (green and black) w/connector connecting to the speaker (woofer).

SPEAKER (MID-RANGE) REMOVAL

5. Complete steps 1 through 4.
6. Remove four screws **C** fixing the speaker (mid-range) to the speaker box.
7. Disconnect the leads (blue and black) w/connector connecting to the speaker (mid-range).

SPEAKER (HORN TWEETER) REMOVAL

8. Complete steps 1 through 7.
9. Remove four screws **D** fixing the speaker (horn tweeter) to the speaker box.
10. Disconnect the leads (red and black) w/connector connecting to the speaker (horn tweeter).

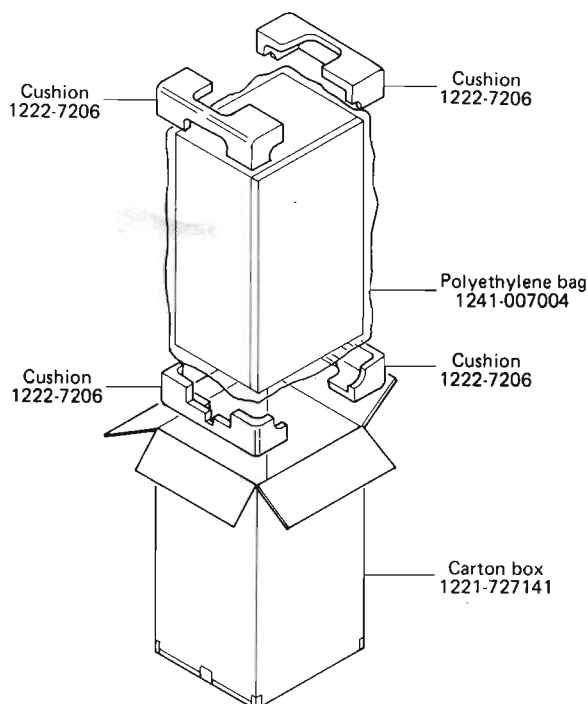
SPEAKER (SUPER TWEETER) REMOVAL

11. Complete steps 1 through 10.
12. Remove four screws **E** fixing the speaker (super tweeter) to the speaker box.
13. Disconnect the leads (yellow and black) w/connector connecting to the speaker (super tweeter).

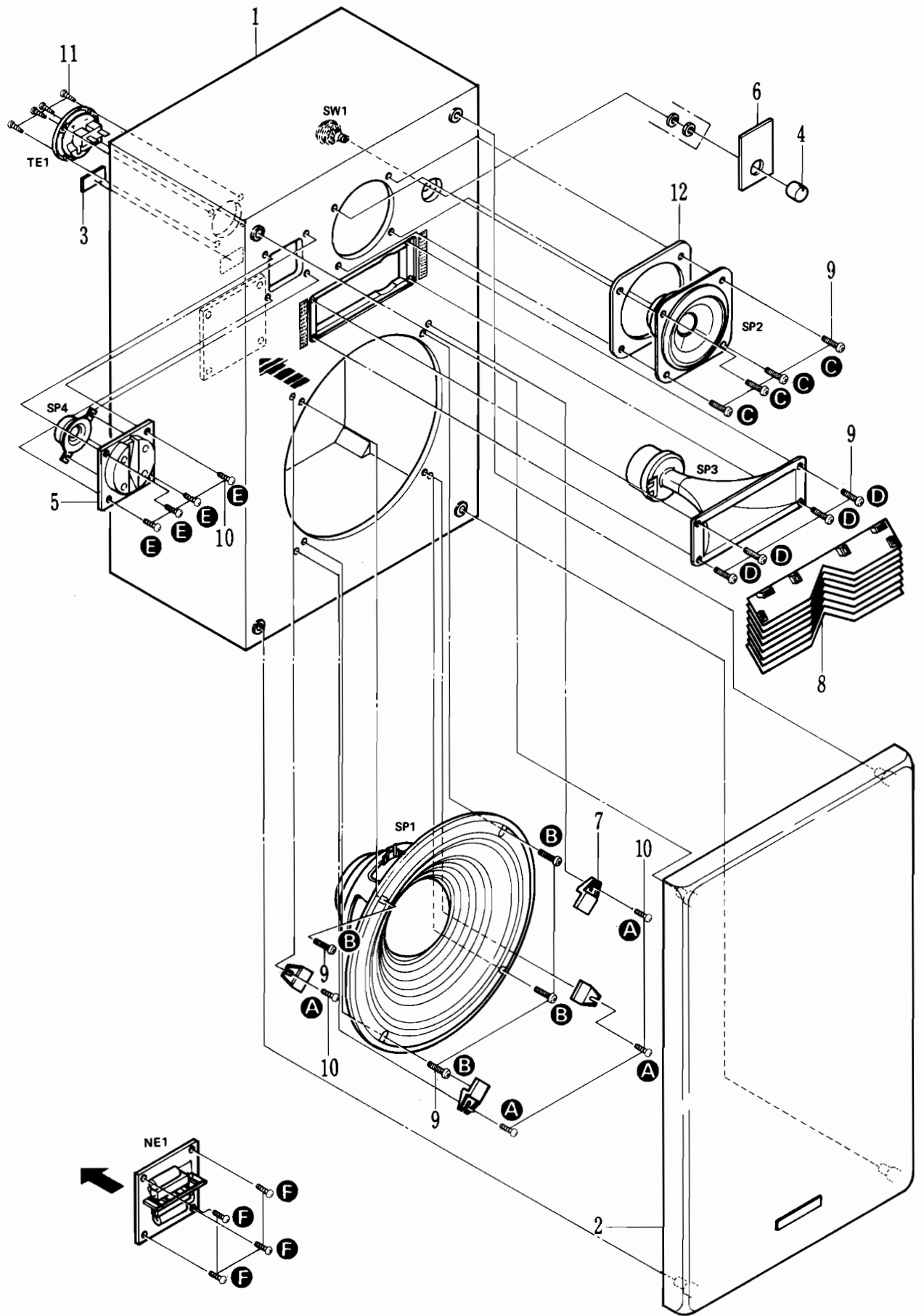
NETWORK REMOVAL

14. Complete steps 1 through 13.
15. Disconnect the leads (green and black) w/connector connecting to the terminal.
16. Remove the nut fixing level control switch on the speaker box.
17. Remove four screws **F** fixing the network to the speaker box.

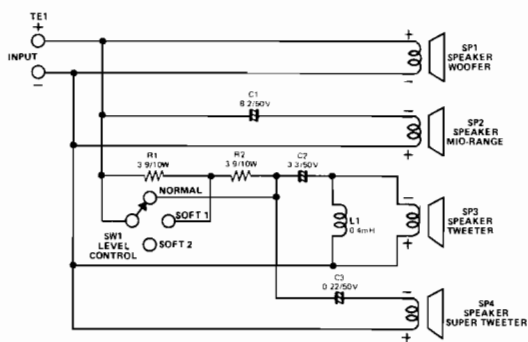
PACKAGE



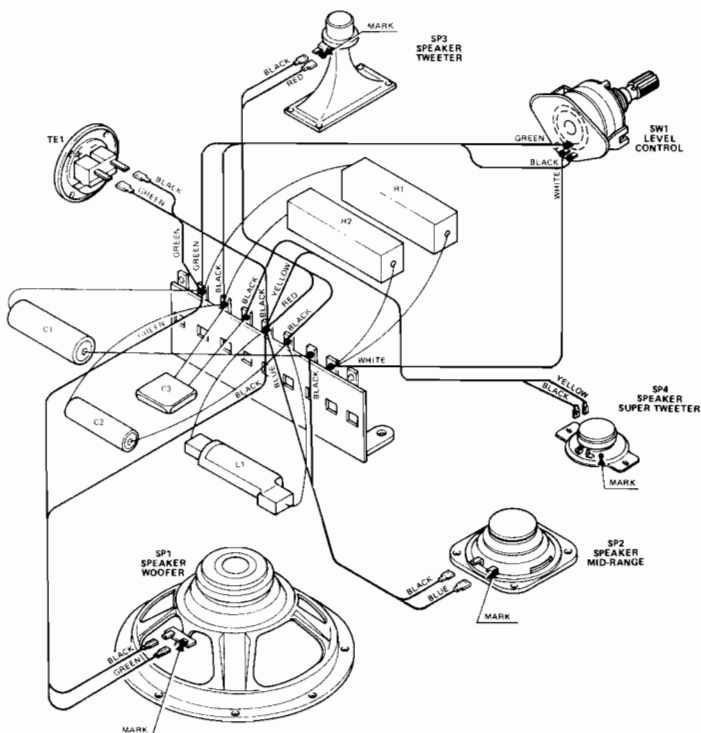
GENERAL UNIT EXPLODED VIEW



SCHEMATIC DIAGRAM



WIRING DIAGRAM



GENERAL UNIT PARTS LIST

Ref. No.	Part No.	Description
1	1315-717025	Speaker Box
2	1525-00301	Front Grille
3	1756-04603	Label
4	1632-09401	Knob, Level Control
5	1562-02901	Frame, Super Tweeter Speaker
6	1721-01802	Indication Plate
7	2244-7001	Holder, Woofer Speaker
8	1522-01401	Diffuser, Horn Tweeter Speaker
9	2327-402049	Special Screw
10	2347-40164	Special Screw
11	2354-31134	Special Screw
12	2116-0113	Packing, Midrange Speaker

ELECTRICAL PARTS LIST

SP1	5811-C330711	Speaker, Woofer, 330mm
SP2	5811-C1207129	Speaker, Midrange, 121mm
SP3	5817-1 → ◆	Speaker, Horn Tweeter, 154 x 51mm
SP4	5811-C0507124	Speaker, Super Tweeter, 50mm
TE1	4215-7006	Terminal
NE1	4381-7001	Network