



AS 63 CS

**Dryer**  
**Asciugatrice**

# 1 Warnings

Please read the following information. Otherwise, there may be the risk of personal injury or material damage. Moreover, any warranty and reliability commitment will become void.

## General Safety

- Never place your machine on a carpet covered floor. Otherwise, lack of airflow from below of your machine may cause electrical parts to overheat. This may cause problems with your machine.
- Your machine is designed to stop operating in the event of power resuming after a power failure. You must press "Start/Pause/Cancel" button to resume the program. Press the "Start/Pause/Cancel" button for 3 seconds to cancel the program (See, Canceling a Program)
- Your machine can be operated at temperatures between +5°C and +35°C.

## First Use

- Do not neglect to have the grounding installation made by a qualified electrician. Our company shall not be liable for any damages that may arise when the machine is used on a line without grounding.
- Please call the Authorized Service to commission your machine.
- When operating your machine for the first time, partly load it with wet pieces of clothes and let it run approximately for 15 minutes.
- You may smell an unpleasant odor and excessive fibre/lint may accumulate during first drying cycle.
- For safety and performance purposes, clean the filters after each drying cycle.

## Intended use

- This product has been designed for home use.
- The appliance may only be used for drying of textiles that are marked accordingly.

## Safety instructions

- Unplug the machine when it is not in use.
- Never wash down the appliance with water! There is the risk of electric shock!
- Never touch the plug with wet hands. Never pull from the cable to unplug the machine. Do not operate the machine if the power cord or plug is damaged.
- Never attempt to repair the machine yourself.
- For malfunctions that cannot be solved by information in the operating manual: Turn off and unplug the appliance and call an authorized service agent.



## To minimize the risk of fire in a tumble dryer, the following should be observed:

- Items that have been spotted or soaked with vegetable or cooking oil constitute a fire hazard and should not be placed in a tumble dryer.

Oil-affected items can ignite spontaneously, especially when exposed to heat sources such as in a tumble dryer. The items become warm, causing an oxidation reaction in the oil. Oxidation creates heat. If the heat cannot escape, the items can become hot enough to catch fire. Piling, stacking or storing oil-affected items can prevent heat from escaping and so create a fire hazard.

If it is unavoidable that fabrics that contain vegetable or cooking oil or have been contaminated by hair care products be placed in a tumble dryer they should first be washed in hot water with extra detergent - this will reduce, but not eliminate, the hazard.

The 'cool down' cycle of tumble dryers should be used to reduce the temperature of the items. They should not be removed from the tumble dryer or piled or stacked while hot. Warning : Never stop tumble dryer before the end of the drying cycle unless all items are quickly removed and spread out so that the heat dissipated.

- Items that have been previously cleaned in, washed in, soaked in or spotted with petrol/gasoline, dry-cleaning solvents or other flammable or explosive substances should not be placed in a tumble dryer.

Highly flammable substances commonly used in domestic environments include acetone, denatured alcohol, petrol/gasoline, kerosene, spot removers (some brands), turpentine, waxes and wax removers.

- Items containing foam rubber (also known as latex foam) or similarly textured rubber like materials should not be dried in a tumble dryer on a heat setting.

Foam rubber materials can, when heated, produce fire by spontaneous combustion.

- Fabric softeners or similar products should not be used in a tumble dryer to eliminate the effects of static electricity unless this practice is specifically recommended by the manufacturer of the fabric softener or product.

Undergarments that contain metal reinforcements should not be placed in a tumble dryer.

Damage to the tumble dryer can result if metal reinforcements come loose during drying.

When available a drying rack could be used for such items.

- Plastic articles such as shower caps or babies' waterproof napkin covers should not be placed in a tumble dryer.
- Rubber-backed articles, clothes fitted with foam rubber pads, pillows, galoshes and rubber-coated tennis shoes should not be placed in a tumble dryer.

### If there are children in your house...

- Electrical appliances may be dangerous for the children. Keep children away from the machine when it is operating. Do not let them tamper with the machine.
- Close the loading door when you leave the area where the machine is located.

- This appliance is not intended for use by young children or infirm persons unless they have been adequately supervised by a responsible person to ensure that they can use the appliance safely.
- Young children should be supervised to ensure that they do not play with the appliance.

## 2 Installation

### The proper location

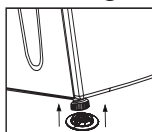
- Install your machine in environments which have no risk of freezing and in a stable and level position.
- Do not place your machine on a long pile rug or on similar surfaces.
- Operate your machine in a well ventilated, dust-free environment.

⚠ Make sure that your machine is not placed on the power cable.

⚠ Place it at least 3 cm away from the edges of other furniture and the walls.

- A special part (Part no: 295 970 0100) replacing the top trim must be provided and installed by the Authorized Service in order to use the machine under a counter or in a cupboard. It should never be operated without the top trim.
- Place the machine on a sound floor. If it is to be placed on top of a washing machine, the approximate weight together may reach 180 kg when they are full.
- A fitting device should be used between the two machines for use on a washing machine. The fitting device (Part no 296 280 0100 white/ 296 280 0200 grey ) must be installed by the Authorized Service.

### Levelling



In order to ensure that your machine operates more silently and vibration-free, it must stand level and balanced on its feet. Front feet of your machine can be adjusted. Balance the

machine by adjusting the feet. Loosen the feet by hand. Adjust them until the machine stands level and firmly.

- ⓘ Never unscrew the adjustable feet from their housings.

2 plastic pieces supplied together with the Operating Instructions prevent your machine from slipping on wet and slippery surfaces. Tilt your machine to backwards to install these plastic parts. Fit the plastic parts to the front adjustable feet. Press on the plastic parts to fix them in their places. Check the balance of your machine again and readjust the adjustable feet if necessary.

### Ventilation hose and connection (for products equipped with an outlet vent)

Ventilation hose assures exhausting of the air from inside the machine. Vented dryer has 1 air outlet. Stainless sheet metal or aluminum pipes can be used instead of the hose. The diameter of the pipe to be used should be minimum 10 cm.

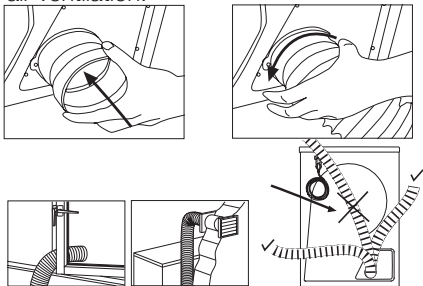
Maximum hose and pipe lengths are given in the table below.

	Hose	Pipe
Maximum length	4 m	5 m
1 elbow 45°	-1.0 m	-0.3 m
1 elbow 90°	-1.8 m	-0.6 m
1 elbow 90° short		-2.7 m
1 wall passage	-2.0 m	-2.0 m

Each elbow and other passages should be subtracted from the above maximum length. Connect the air outlet hose to the hose spacer piece by turning it anti-clockwise in order to connect the ventilation hose. Make the hose passages as shown below.

- ⓘ Exhaust of humid air from the dryer into the room is inconvenient. Air outlet hose must be

extended directly to the outdoors. There must be a small number of elbows as not to hinder air ventilation.

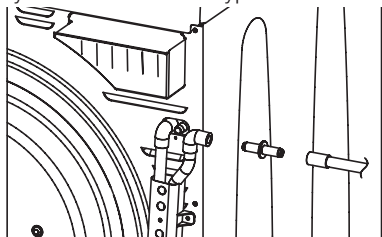


- ❗ The ventilation hose can be routed outdoors via a window or it can be connected to the air outlet in the bathroom.
- ❗ To prevent water accumulation in the hose, make sure that it is not folded on the floor.
- ⚠ The air ventilation hose should not be connected to the chimney of a stove or a fireplace.
- ⚠ Pay attention that the air inlet openings are unobstructed.
- ⚠ Do not operate your machine at the same time with heaters such as a coal or gas stove. Airflow may cause the chimney to flare up. Airflow may cause the chimney to flame up.

### Connection to a water drain (for products equipped with a condenser)

In products equipped with a condenser unit the water accumulated during the drying cycle is collected in the water tank. You should drain the accumulated water after each washing cycle. You can directly send the accumulated water out through the water drain hose supplied with the machine instead of periodically draining the water collected in the water tank.

Remove the hose on the machine by pulling it out from its end in order to make the water drain hose connection. Do not use any tools to take out the hose. Attach the drain hose adaptor to the end of this hose. Connect the special drain hose supplied with the machine to the hose adaptor fitting. The other end of the drain hose can be directly connected to the wastewater drain or to the washbasin. The fitting must always be secured in all types of connections.



❗ When you direct the water drain out, “Water Tank” warning LED will light up at the end of each program.

- The hose should be attached to a height of maximum 80 cm.
- You must be careful not to pinch or bend the hose.

### Electrical connection

Connect the machine to an earthed outlet protected by a fuse of suitable capacity.

Important:

- Connection should comply with national regulations.
- Power cord plug must be within easy reach after installation.
- The voltage and the allowed fuse protection are specified in the section “Technical Specifications”.
- The stated voltage must match with your mains voltage.
- Connection via extension cords or multi-plugs should not be made.
- The main fuse and switches must have a contact distance of minimum 3 mm.
- ⚠ A damaged power cable must be replaced by a qualified electrician.
- ⚠ The appliance must not be operated unless it is repaired! There is the risk of electric shock!

### Disposal

Packaging material can be dangerous to children. Keep the packaging materials out of the reach of children or dispose of them accordingly. Do not dispose them together with normal domestic wastes.

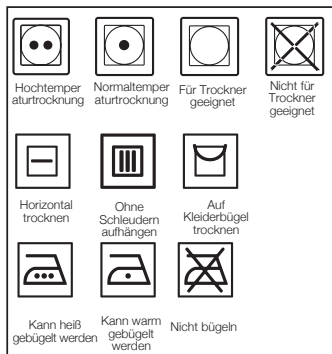
### Disposing of the old machine

Dispose of your old appliance in an environmental friendly manner.

- You may refer to your local agent or solid waste collection center in your municipality to learn how to dispose of your machine.
- Before disposing of your old machine, cut off the mains plug and make the door lock unusable, so children will not be endangered.

### 3 Before drying

Always follow the advice on the garment labels. With this dryer, dry only the laundry having a label stating that they are suitable for drying in a dryer by selecting the appropriate program.



- Laundry items with metal attachments such as, belt buckles and metal buttons can damage your machine.
- Do not dry items such as woolen, silk garments and nylon stockings, delicate embroidered fabrics, garments with metal accessories and items such as sleeping bags in the machine.
- Garments made of delicate and valuable fabrics as well as lace curtains can be creased. Do not dry these in your machine!
- Do not dry items made of hermetic fibers such as pillows and quilts in the drying machine.
- Garments made of foam or rubber may be deformed.
- Do not dry clothes containing rubber in the machine.
- Do not dry clothes exposed to petroleum, oil, combustible or explosive agents in the machine even if they are washed beforehand.
- Overly wet laundry or laundry with dripping water must not be put into the machine.

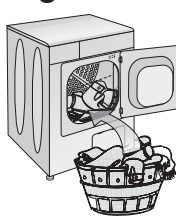
#### Preparing clothes to be dried

- All laundry must be spun at the highest possible spin speed your washing machine allows for the textile type.
- Laundry may be tangled after washing. Separate your laundry before placing them into your dryer.
- Sort your laundry according to their types and thicknesses. Dry the same type of laundry together.

Following weights are given as examples.

Home articles	Approximate weights (gr)
Cotton quit covers (double)	1500
Cotton quit covers (single)	1000
Bed sheets (double)	500
Bed sheets (single)	350
Large tablecloths	700
Small tablecloths	250
Tea napkins	100
Bath towels	700
Hand towels	350
Garments	Approximate weights (gr)
Blouses	150
Cotton shirts	300
Shirt	200
Cotton dresses	500
Dresses	350
Jeans	700
Handkerchiefs (10 pieces)	100
T-Shirts	125

#### Right load capacity



⚠ Please consider the information in the "Program Selection Table". Always start the program in accordance with the maximum load capacity.

ℹ Adding laundry to the machine more than the level shown in the figure is not recommended..

Drying performance will degrade when the machine is overloaded. Furthermore, your machine and your clothes might be damaged.

ℹ Place your garments into the drum loosely so that they will not get tangled..

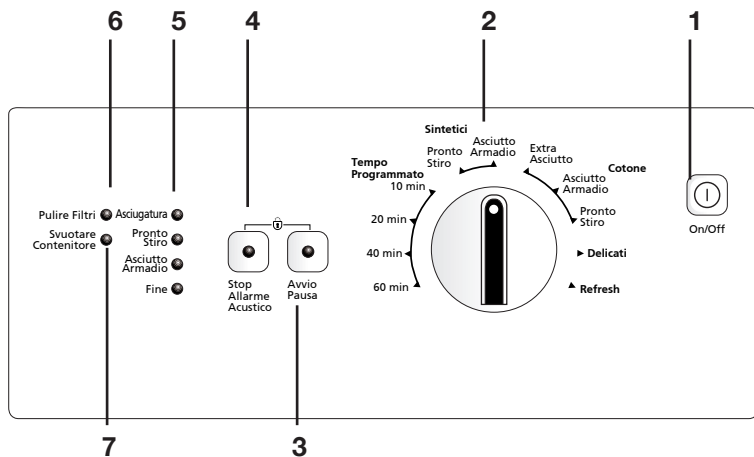
ℹ Large pieces may bunch-up during drying. Stop the machine 1-2 times during drying process to separate bunched-up laundry.

#### Loading door

Open the loading door. Place laundry items loosely into the machine. Push the loading door to close. Ensure that no items are caught in the door.

## 4 Selecting a Program and Operating Your Machine

### Control panel



1. On/Off button
2. Program selection knob
3. Start/Pause/Cancel button
4. Cancel Audio Warning
5. Program follow-up indicator

6. Filter cleaning warning LED
  7. Water tank full warning LED\*
  8. Time delay button \*
- \* According to your machine's model

## Turning the machine on

Prepare machine for program selection by pressing the "On/Off" button.

**i** Pressing the "On/Off" button does not necessarily mean the program has started. Press "Start/Pause/Cancel" button to allow the machine start the program.

## Program selection

Decide the appropriate program from the table below which includes drying temperature in degrees. Select the desired program with the program selection button.

Extra dry	Dry at high temperature only for cotton laundry. Thick and multi layered laundry (E.g.: towels, linens, jeans) are dried in a way that they do not require ironing before placing in the wardrobe.
Ready to Wear	Normal laundry (E.g.: tablecloths, underwear) are dried in a way that they do not require ironing before placing in the drawers.
Ready to Iron	Normal laundry (E.g., Shirts, dresses) are dried ready to be ironed.

**i** Always select the highest temperature required for drying. High temperature will ensure energy and time saving.

**i** For further program details, see, "Program Selection Table"

## Main programs

Depending on the type of textile, the following main programs are available:

### •Cottons

You can dry your durable clothes with this program. Dries at a higher temperature. It is recommended to use for your cotton items (such as bed sheets, quilt cover, underclothing, etc.).

### •Synthetics

You can dry your less durable clothes with this program. It dries at a lower temperature compared to the cottons program. It is recommended for your synthetic clothes (such as shirts, blouses, synthetic/cotton blended garments, etc.).

**i** Do not dry curtains and lace in your machine.

### •Anti-creasing

A 2-hour anti creasing program to prevent laundry from creasing will be activated if you do not take the laundry out after the program has come to an end. This program rotates the laundry in 60-second intervals to prevent creasing.

### Special programs

For special cases, there are also extra programs available:

**i** Additional programs may differ according to the model of your machine.

### •Delicates

You can dry at a lower temperature your very delicate laundry (silk blouses, fine underwear, etc.) that are suitable for drying or laundry which is advised to be hand-washed.

### •Ventilation





Only ventilation is performed for 10 minutes without blowing hot air. You can air your clothes that have been kept at closed environments for a long time thanks to this program to deodorize unpleasant odors.

### •Timer programs

You can select one of the 10 min., 20 min., 40 min. and 60 min. timer programs to achieve the desired final drying level at low temperatures. Program dries at the selected time regardless of the drying level.

## Program selection and consumption table

### Program table

Programs	Capacity (kg)	Spin speed in washing machine (rpm)	Approximate amount of remaining humidity	Drying time (minutes)
<b>Cottons / Coloreds</b>				
 Ready to Wear	6	1200-1000	% 60	130
		900-800	% 60	150
	3	1200-1000	% 60	80-60
		900-800	% 60	100-80
 Ready to Iron	6	1200-1000	% 60	130-100
		900-800	% 60	130
	3	1200-1000	% 60	80-60
		900-800	% 60	80-60
<b>Synthetics</b>				
 Ready to Wear	3	800	% 50	80-60
		600	% 50	130-100
	1.5	800	% 50	60-30
		600	% 50	60-30
<b>Delicates</b>				
 Ready to Wear	1.5	600	% 50	40
<b>Energy consumption values</b>				
Programs	Capacity (kg)	Spin speed in washing machine (rpm)	Approximate amount of remaining humidity	Energy consumption value kWh
Cottons linen Ready to wear*	6	1000	% 60	3.84
Cottons Ready to iron	6	1000	% 60	3.40
Synthetics&Mixed fabrics Ready to wear	3	600	% 50	2.00

\* : Energy Label standard program (EN 61121:2005)

All values given in the table have been fixed according to EN 61121:2005 Standard. These values may deviate from the table according to the laundry type, laundry spin speed, environmental conditions and voltage fluctuations.



## Auxiliary function

### Buzzer Cancel Models Equipped

Your machine will send out a buzzer warning when the program comes to an end. If you do not want to hear this buzzing, you need to press the "Cancel Audio Warning" button. The relevant LED will light up when this button is pressed and an audio warning will not be given when the program comes to an end.

### Warning indicators

**i** Warning indicators may differ according to the model of your machine.

### Filter cleaning

A warning LED will light up to remind filter cleaning after the program finishes.

**i** If the filter cleaning warning LED lights up continuously, please refer to, "Solution suggestions for problems".

### Water tank

A warning LED will light up at the end of the program or when the tank is full with water. The machine stops operating when this warning LED lights up during a program running. To restart the machine, please drain the water in the water tank. Press "Start/Pause/Cancel" button to start the program after you have emptied the water tank. The warning LED goes off and the program resumes operating.

### Starting the Program

Press "Start/Pause/Cancel" button to start the program. "Start/Pause/Cancel" button will light up to indicate that the program has started.

### Progress of program

Progress of a running program is shown through the program follow-up indicator.

At the beginning of every program step, the relevant indicator LED will light up and light of the completed step will turn off.

#### "Drying":

- Drying level will be illuminated during the whole drying process until the drying degree reaches "Ready to Iron".

#### "Ready to Iron":

- Starts to illuminate when the drying degree reaches "Ready to Iron" step and remains illuminated until the next step.

#### "Ready to Wear":

- Starts to illuminate when the drying degree reaches "Ready to Iron" step and remains illuminated until the next step.

#### "Final / Anti-creasing":

- Illuminates when the program comes to an end and anti-creasing function is activated.

**i** If more than one LED light up or flash concurrently, it means there is malfunctioning or a failure (please see, Solution suggestions for problems).

### Changing the program after the program has started

You can use this feature after your machine has started to dry your clothes under higher or lower temperatures.

For example;

Press and hold the "Start/Pause/Cancel" button for about 3 seconds to "Cancel" the program in order to select "Extra Dry" program instead of "Iron Dry" program.

Select the "Extra Dry" program by rotating the program knob.

Press "Start/Pause/Cancel" button to start the program.

**i** The program which is selected first will go on even if the program selection button is moved and another program mode is selected while the machine is operating. You must cancel the ongoing program in order to change the drying program. (See, Ending the program through canceling)

### Adding/removing laundry in standby mode

If you want to add or remove laundry into/from your machine after the drying program has started, put the machine into "Pause" mode by pressing the "Start/Pause/Cancel" button. Drying process will stop. Open the door at Pause position and close it again after adding or taking out laundry. Press "Start/Pause/Cancel" button to start the program.

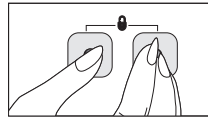
**i** Any laundry added after the drying process was started may cause the already dried clothes in the machine intermingle with wet clothes and the result will be wet laundry after the drying process is over.

**i** It is recommended to add laundry before the program is started since it will increase the program time and energy consumption.

### Child-proof lock

There is a childproof lock to prevent any program interruption due to the pressing of keys while the program is on. The loading door and all keys except the "On/Off" key on the panel are deactivated when the child-proof lock is active.

In order to activate the childproof lock, press on the "Start/Pause/Cancel" and "Cancel audio warning" buttons simultaneously for 3 seconds.




To start a new program after the program is over or to interrupt the program, the childproof lock should be deactivated. To deactivate the childproof lock, press the same buttons for 3 sec.


**i** 2 beeps when activating and 1 beep when deactivating the child-proof lock is heard.

## Ending the program through canceling

The program which is selected first will keep on going even if the position of the program selection button is changed. A new program can be selected and started after “Program cancel” is activated in order to change the drying program.

In order to cancel the selected program; press “Start/Pause/Cancel” button for about 3 seconds. The “Filter cleaning”, “Water tank” and “End/ Anti-creasing” warning LEDs will light up at the end of this period for reminding purposes.

 As the inside of the machine will be excessively hot when you cancel the program while the machine is running, activate the ventilation program to cool it down.

 If the machine is stopped during any drying program, and if the position of the program selection knob is changed, an audio signal will be heard (if the “Cancel audio warning” function is not selected).

The machine will not start even if the “Start/ Pause/Cancel” button is pressed, unless the program selection knob is returned to the initial program. The paused program must be cancelled in order to change the drying program.

## End of program

The “End/Anti-creasing”, “Filter cleaning” and “Water tank” warning LEDs on the program follow up indicator will light up when the program comes to an end. The door can be opened and the machine becomes ready for a second cycle. Press the “On/Off” button to shut down the machine. Clean the filter and drain the water tank after each drying.

## Technical Specifications

Models	Condenser Dryer with electronic Sensor control
Height / Height for built-under installation (cm)	85.0 / 82.0
Width (cm)	59.5
Depth / Depth for built-under installation (cm)	54
Height adjustment of feet (cm)	0.5
Length of drain hose (cm)	140
Diameter of drain hose (mm)	10
Highest point of the hose (cm)	80
Weight, unpacked (kg)	36
Voltage	230V ~ 50 Hz
Connected load	2200 W
Fuse protection	16A



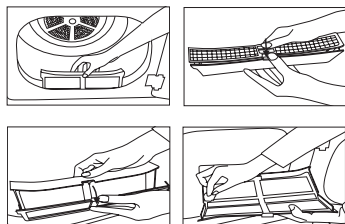
This appliance's packaging material is recyclable. Help recycle it and protect the environment by dropping it off in the municipal receptacles provided for this purpose. Your appliance also contains a great amount of recyclable material. It is marked with this label to indicate the used appliances that should not be mixed with other waste. This way, the appliance recycling organised by your manufacturer will be done under the best possible conditions, in compliance with European Directive 2002/96/EC on Waste Electrical and Electronic Equipment. Contact your town hall or your retailer for the used appliance collection points closest to your home. We

thank you doing your part to protect the environment.

## 5 Maintenance and cleaning

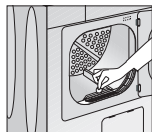
### Fluff filter

Lint and fibres released from the laundry to the air during the drying cycle are collected in the “Fluff Filter”.



**i** Such fibre and lint are generally formed during wearing and washing. Always clean the filter after each Drying process. You can clean the filter and filter area by vacuum cleaner. For filter cleaning; Open the cover. Remove the fluff filter by pulling it up and open the filter. Clean lint, fibre, and the fluff by hand or with a soft piece of cloth. Close the filter and place it back into its seat.

### Sensor (models equipped with a sensor)



There are humidity sensors in your machine that detect whether the laundry is dry or not. For sensor cleaning; Open the door of the machine. Allow the machine to cool off if drying has been carried out. Wipe the metal sensors with a soft cloth, dampened with vinegar and dry them.

**i** Clean metal sensors 4 times a year.  
**⚠** Never use solvents, cleaning agents or substances alike when cleaning as these might cause fire and explosion!

### Water tank

The moisture in the damp laundry is taken from the laundry and condensed. Drain the water tank after each drying cycle or during drying when “Water tank” warning LED comes on.

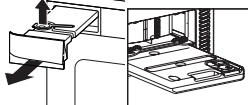
**⚠** Condensed water is not drinkable!  
**⚠** Never take out the water tank when the program is running!

Water tank may be located in two different places, namely, inside the drawer on the panel or inside the kick plate cover.

If you forget to drain the water tank, your machine will stop during the following drying cycles when the water tank is full and the “Water tank” warning LED will light on. If this is the case, press the “Start/Pause/Cancel” button to resume the drying cycle after draining the water

tank.

To drain the water tank; Carefully remove the water tank by opening the kick plate cover/ pulling the drawer.



- 1 Drain the water by opening the water tank cover.
- 2 If there is lint accumulation in the water tank cover, clean it and press to close.
- 3 Place the water tank into its seat.

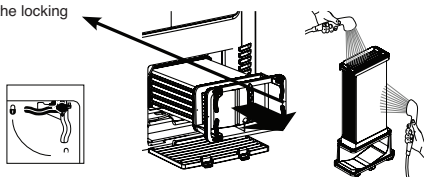
### Condenser

Hot and humid air in the condenser is cooled with the cold air from the room. Thus, the humid air circulating in your machine is condensed and then pumped into the tank.

**i** Clean the condenser after every 20 drying cycles or once a month.

To clean the condenser; If a drying process has been carried out, open the door of the machine and wait until it cools down. Unlock the 4 condenser locks after opening the kick plate. Pull out the condenser. Clean the condenser with pressurized water and wait until the water drains. Replace the condenser with the side labeled “Top” facing upwards. Lock the 4 condenser locks. Make sure that the red lock on the upper right corner is engaged securely. Close the kick plate cover.

Close properly and check the locking latches?



## 6 Solution suggestions for problems

Problem	Cause	Explanation / Suggestion
Drying process takes too much time.	Cover filter and filter drawer might have not been cleaned.	* Clean the cover filter and Filter drawer.
Laundry come out wet at the end of drying.	* Cover filter and filter drawer might have not been cleaned. * Excessive laundry might have been loaded in.	* Clean the cover filter and Filter drawer. * Do not overload the machine.
Machine does not switch on or the program does not start. Machine is not activated when set.	* It might have not been plugged in. * The loading door may be ajar. * Program might have not been set or the "Start/Pause/Cancel" button might have not been pressed. * "Childproof lock" might have been activated. * The condenser cover on the models with a condenser might not be closed securely.	* Make sure that the machine is plugged in. * Make sure that the loading door is properly closed. * Make sure that the program has been set and it is not in "Pause" mode. * Deactivate the childproof lock. * Make sure that the condenser cover and the red lock is closed securely.
Program has been interrupted without any cause.	* The loading door may be ajar. * Electricity may be cut off.	* Make sure that the loading door is properly closed. * Press "Start/Pause/Cancel" button to start the program.
Laundry has shrunk, become felted or deteriorated.	* A program suitable for the laundry type might have not been used.	* Dry only the laundry which is suitable for drying in your machine after checking the labels on your clothes. * Select a program with suitable low temperature for the laundry type to dry your clothes.
Drum lightning does not come on. (for models equipped with a lamp)	* The machine might have not been started by using the On/Off button. * Bulb may have blown.	* Make sure that the machine is On. * Call the authorized service to replace the bulb.
"Final / Anti-creasing" LED flashes.	* The 2-hour anti creasing program to prevent laundry from creasing might have been activated.	* Turn off the machine and take out the laundry.
"Final / Anti-creasing" LED is on.	* Program has come to an end.	* Turn off the machine and take out the laundry.
The "Drying" LED flashes.	* A heat sensor failure has occurred. Machine ends the program without heating.	* Turn off the machine and take out the laundry. Call your authorized service.
Also for products equipped with a condenser		
"Water tank" warning LED is on.	* Water may be full. * Anti-creasing program might be running.	* Drain the water in the water tank.
"Filter cleaning" LED is on.	* Filter might have not been cleaned.	* Clean the cover filter.
"Condenser cleaning" LED is on.	* Filter drawer/Condenser might have not been cleaned.	* Clean the filters in the condenser/filter drawer under the kick plate.

 Call an authorized service if the problem persists.