



SL20 Gen II Parts Manual Phase 7

American Dryer Corporation
88 Currant Road
Fall River, MA 02720-4781
Telephone: (508) 678-9000 / Fax: (508) 678-9447
E-mail: techsupport@amdry.com

www.amdry.com

Retain This Manual In A Safe Place For Future Reference

American Dryer Corporation products embody advanced concepts in engineering, design, and safety. If this product is properly maintained, it will provide many years of safe, efficient, and trouble free operation.

ONLY qualified technicians should service this equipment.

OBSERVE ALL SAFETY PRECAUTIONS displayed on the equipment or specified in the installation manual included with the dryer.

The following “**FOR YOUR SAFETY**” caution must be posted near the dryer in a prominent location.

FOR YOUR SAFETY

Do not store or use gasoline or other flammable vapors and liquids in the vicinity of this or any other appliance.

POUR VOTRE SÉCURITÉ

Ne pas entreposer ni utiliser d'essence ni d'autres vapeurs ou liquides inflammables à proximité de cet appareil ou de tout autre appareil.

We have tried to make this manual as complete as possible and hope you will find it useful. ADC reserves the right to make changes from time to time, without notice or obligation, in prices, specifications, colors, and material, and to change or discontinue models.

Important

For your convenience, log the following information:

DATE OF PURCHASE _____ MODEL NO. **SL20 PH7**
RESELLER'S NAME _____
Serial Number(s) _____

Replacement parts can be obtained from your reseller or the ADC factory. When ordering replacement parts from the factory, you can FAX your order to ADC at (508) 678-9447 or telephone your order directly to the ADC Parts Department at (508) 678-9000. Please specify the dryer model number and serial number in addition to the description and part number, so that your order is processed accurately and promptly.

The illustrations on the following pages may not depict your particular dryer exactly. The illustrations are a composite of the various dryer models. Be sure to check the descriptions of the parts thoroughly before ordering.

“IMPORTANT NOTE TO PURCHASER”

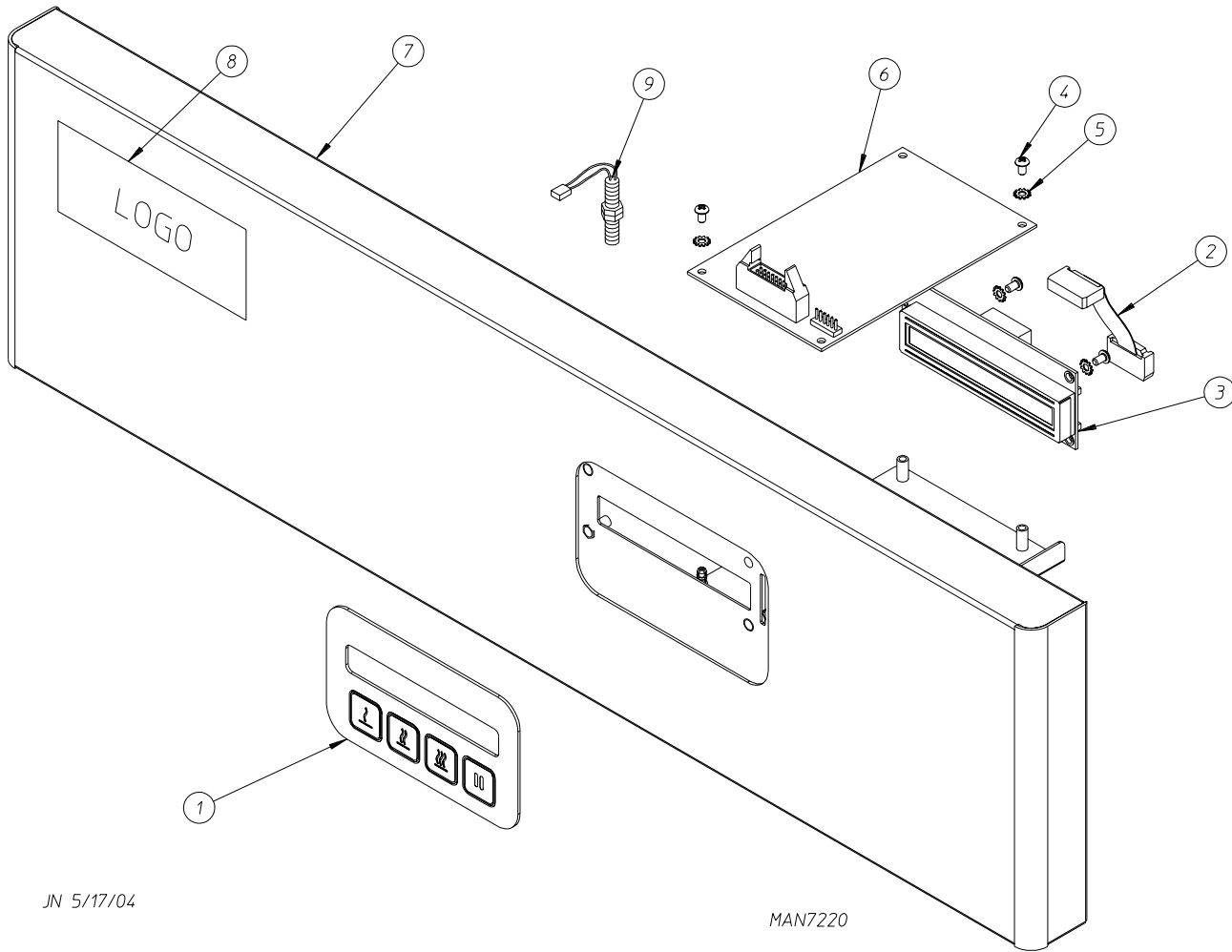
Information must be obtained from your local gas supplier on the instructions to be followed if the user smells gas. These instructions must be posted in a prominent location near the dryer.

Table of Contents

Phase 7.3 Non-Coin Top Panel Assembly for Top Control Models	4
Phase 7.5 Non-Coin Top Panel Assembly for Top Control Models	5
Front Panel Assemblies	6
Phase 7.5 Non-Coin Bottom Panel Assembly for Bottom Control Models	7
Phase 7.3 Non-Coin Bottom Panel Assembly for Bottom Control Models	8
Phase 7.3 Coin Top Panel Assembly for Top Control Models	9
Phase 7.3 Coin Bottom Panel Assembly for Bottom Control Models	10
Main Door Assemblies	11
Middle Front Panel Assembly	12
Lint Drawer Assembly for Models Mfd. as of July 29, 2005	13
Lint Drawer Assembly for Models Mfd. prior to July 29, 2005	14
Tumbler Assembly for Models Mfd. as of May 2004	15
Tumbler Assembly for Models Mfd. prior to May 2004	16
Rear Support Panel Assembly	17
Front Tumbler Wheel Assemblies	18
Rear Tumbler Wheel Assemblies	19
Fire Suppression System Piping Assembly	20
Temperature Sensor Assemblies	21
Motor Drive Assembly	22
Direct Spark Ignition Burner Assembly	24
Lint Box / Blower Motor Assembly	26
Electric Oven Assembly	28
Blower Assembly	29
Blower Motor Assembly	30
Front Electrical Panel Assembly	31
Sail Switch Assembly	32
Base / Top / Sides / Back Guard Assemblies	33
Pedestal Box Option	34
Additional Parts Available	35

Phase 7.3 Non-Coin Top Panel Assembly

For Top Control Models



JN 5/17/04

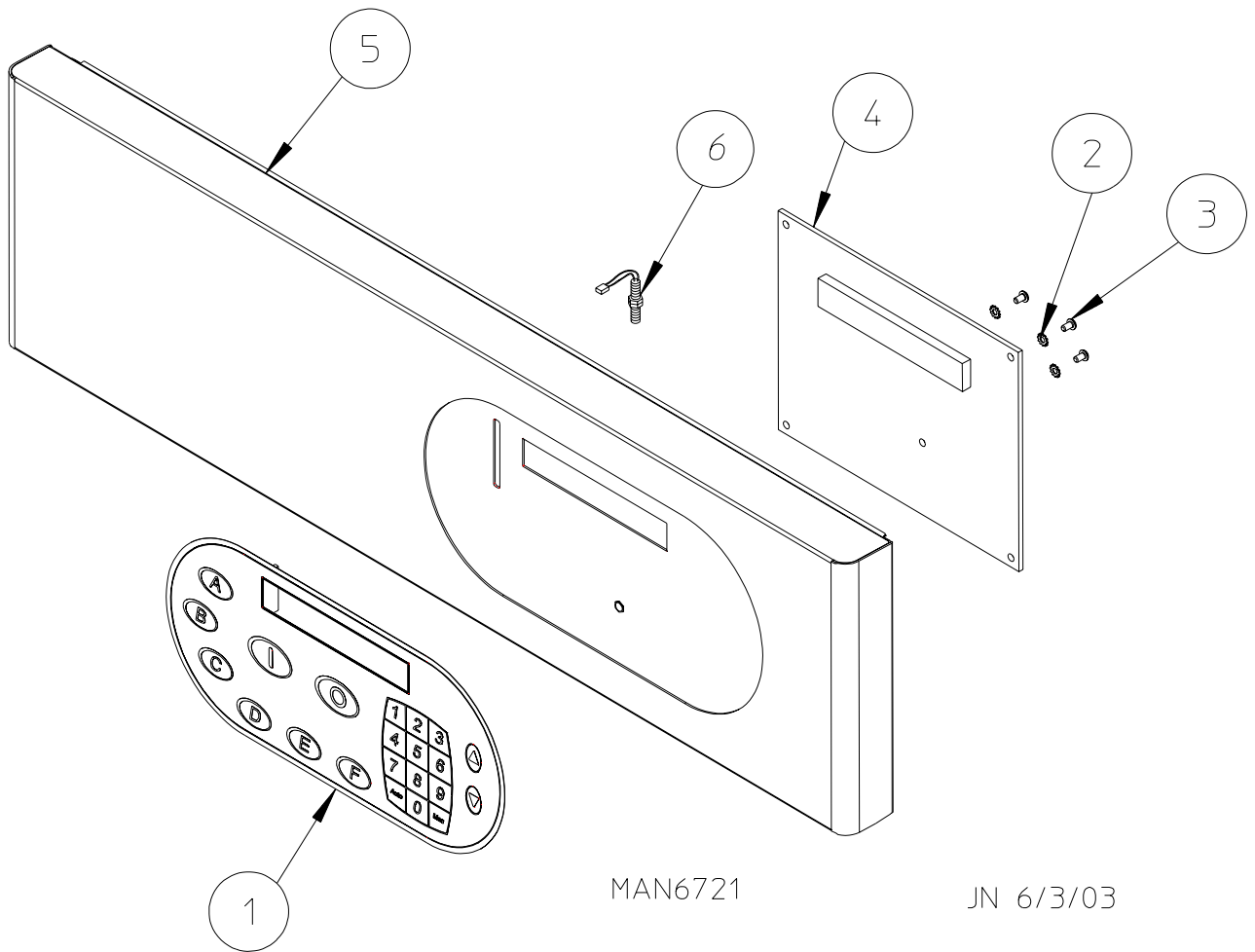
MAN7220

Illus. No.	Part No.	Qty.	Description
1	112579	1	Phase 7 Keypad
2	137250	1	Phase 7 Ribbon Cable
3	137270	1	Large Character Display
4	150005	4	#6-32 x 1/4" Phillips Round Head Machine Screw
5	153010	4	#6 Star Washer
6	887012	1	Phase 7.3.2 Board with a Fire Suppression System (for models mfd. as of January 22, 2004)
	887009	1	Phase 7.3.2 Board with a Fire Suppression System (for models mfd. prior to January 22, 2004)
7	818482	1	Black Control Panel
8	-----*	1	Logo ONLY
9	818206	1	Magnetic Switch

* Contact reseller for logo.

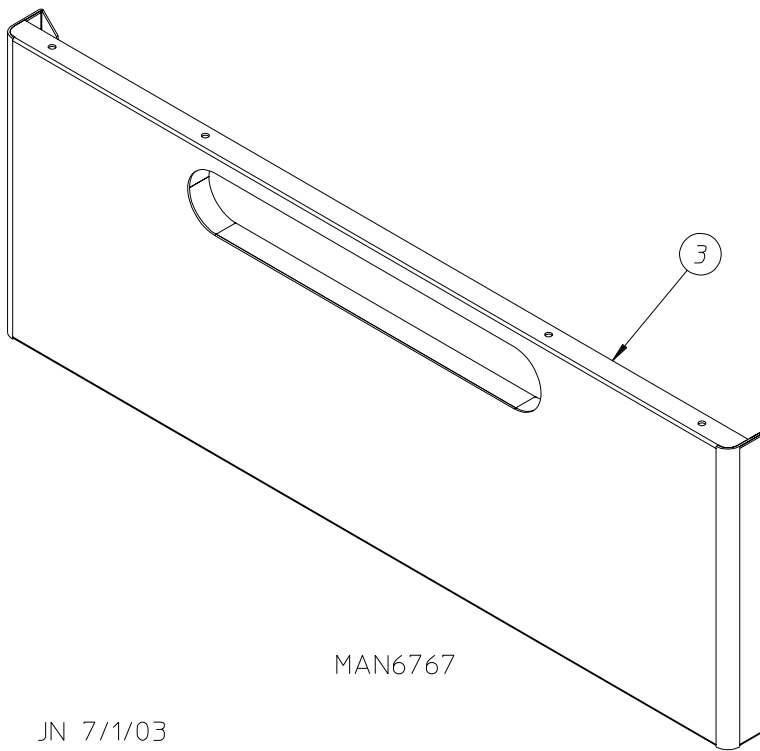
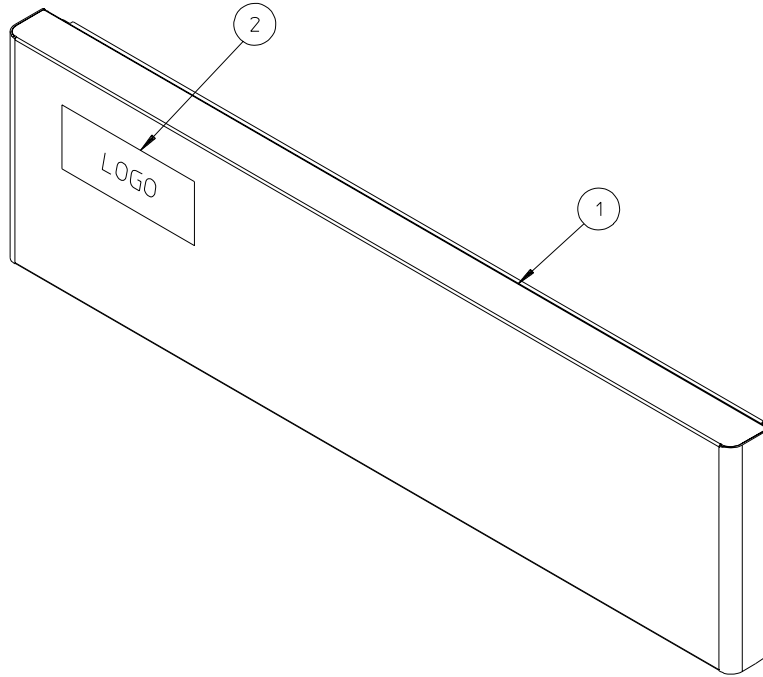
Phase 7.5 Non-Coin Top Panel Assembly

For Top Control Models



<u>Illus. No.</u>	<u>Part No.</u>	<u>Qty.</u>	<u>Description</u>
1	112580	1	Phase 7.5 Non-Coin Keypad
2	153010	3	#6 Star Washer
3	150005	3	#6-32 x 1/4" Phillips Round Head Machine Screw
4	887020	1	Phase 7.5 Non-Coin Board with a Fire Suppression System
5	818463	1	Non-Coin Top Control Panel
6	818206	1	Magnetic Switch

Front Panel Assemblies



MAN6767

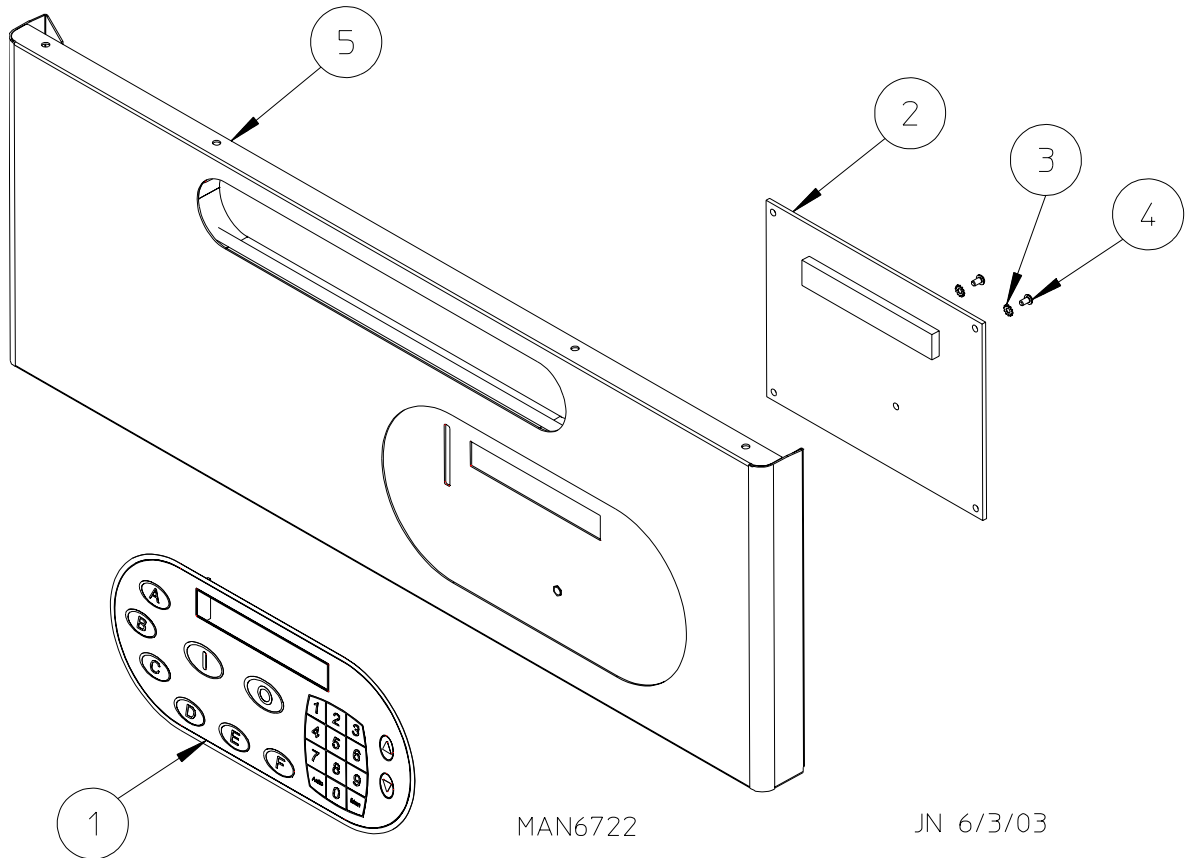
JN 7/1/03

Illus. No.	Part No.	Qty.	Description
1	818478	1	Top Control Panel for Bottom Controls
2	-----*	-	Logo ONLY
3	818466	1	Front Bottom Panel Assembly for Top Controls

* Contact reseller for logo.

Phase 7.5 Non-Coin Bottom Panel Assembly

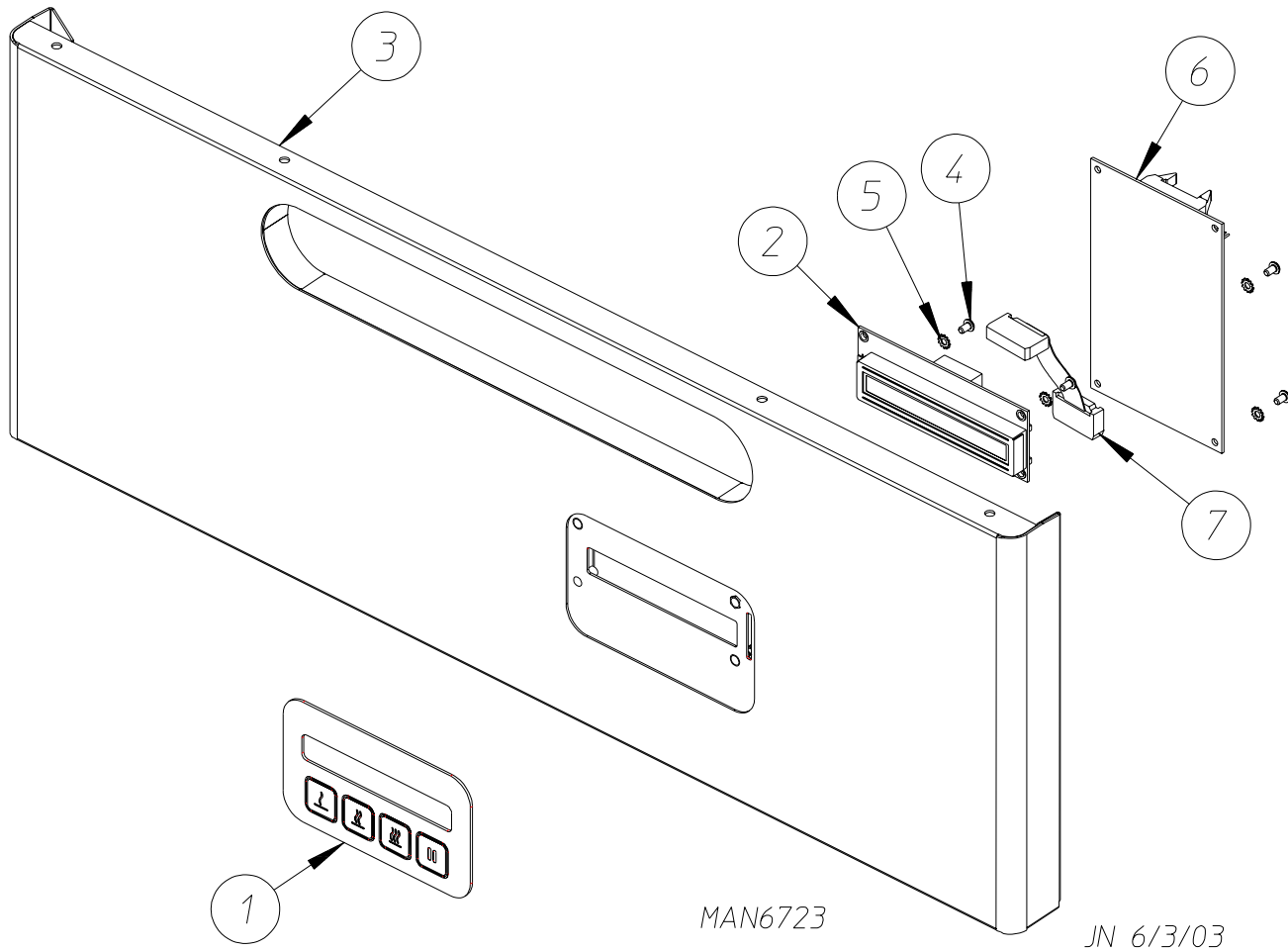
For Bottom Control Models



<u>Illus. No.</u>	<u>Part No.</u>	<u>Qty.</u>	<u>Description</u>
1	112580	1	Phase 7.5 Non-Coin Keypad
2	887020	1	Phase 7.5 Non-Coin Board with a Fire Suppression System
3	153010	3	#6 Star Washer
4	150005	3	#6-32 x 1/4" Phillips Round Head Machine Screw
5	818465	1	Phase 7.5 Non-Coin Bottom Control Panel

Phase 7.3 Non-Coin Bottom Panel Assembly

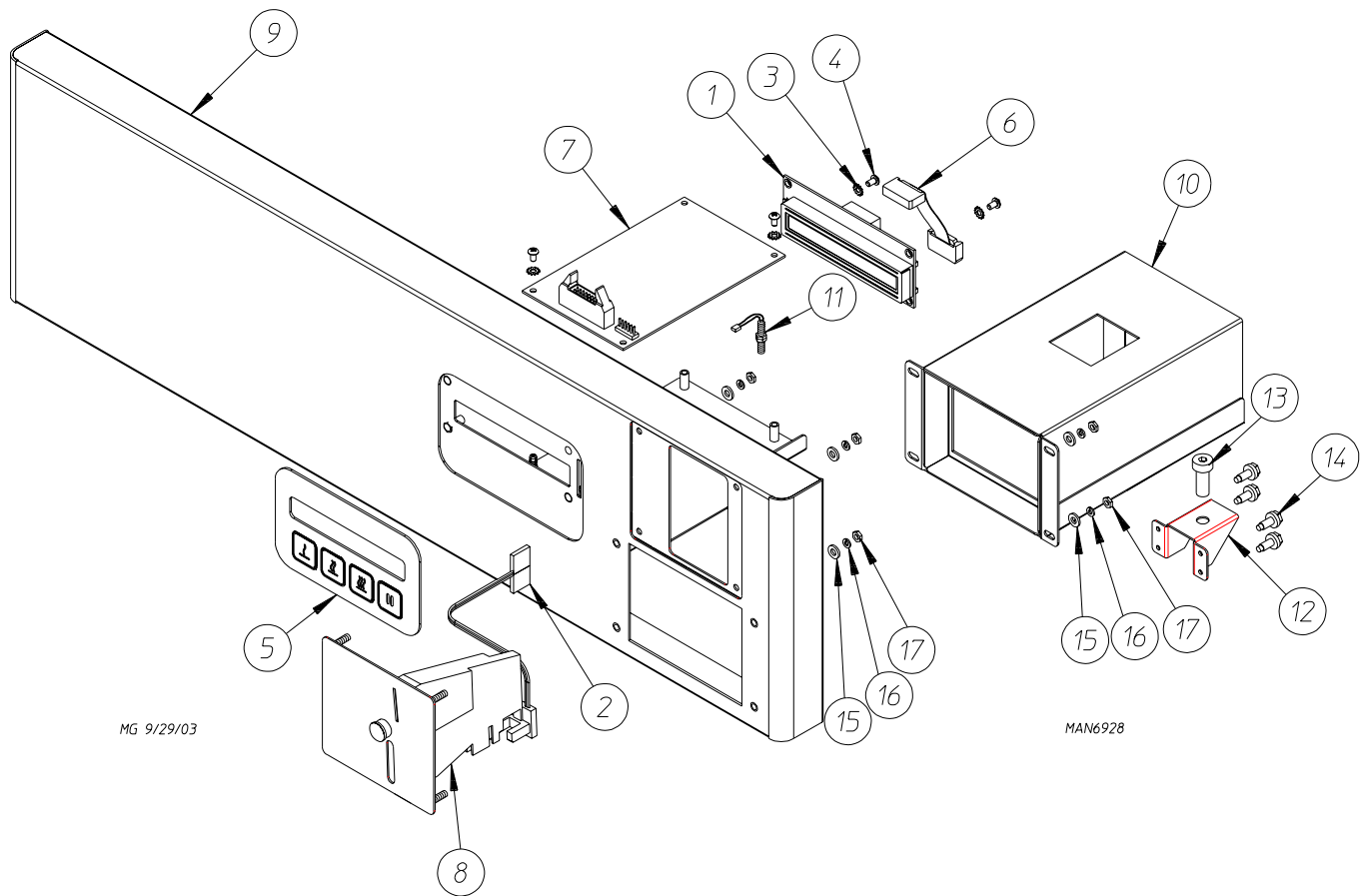
For Bottom Control Models



<u>Illus. No.</u>	<u>Part No.</u>	<u>Qty.</u>	<u>Description</u>
1	112579	1	Phase 7.3 Keypad
2	137270	1	Large Character Display
3	818436	1	Non-Coin Bottom Control Panel
4	150005	4	#6-32 x 1/4" Phillips Round Head Machine Screw
5	153010	4	#6 Star Washer
6	887012	1	Phase 7.3.2 Board with a Fire Suppression System (for models mfd. as of January 22, 2004)
	887009	1	Phase 7.3.2 Board with a Fire Suppression System (for models mfd. prior to January 22, 2004)
7	137250	1	Ribbon Cable

Phase 7.3 Coin Top Panel Assembly

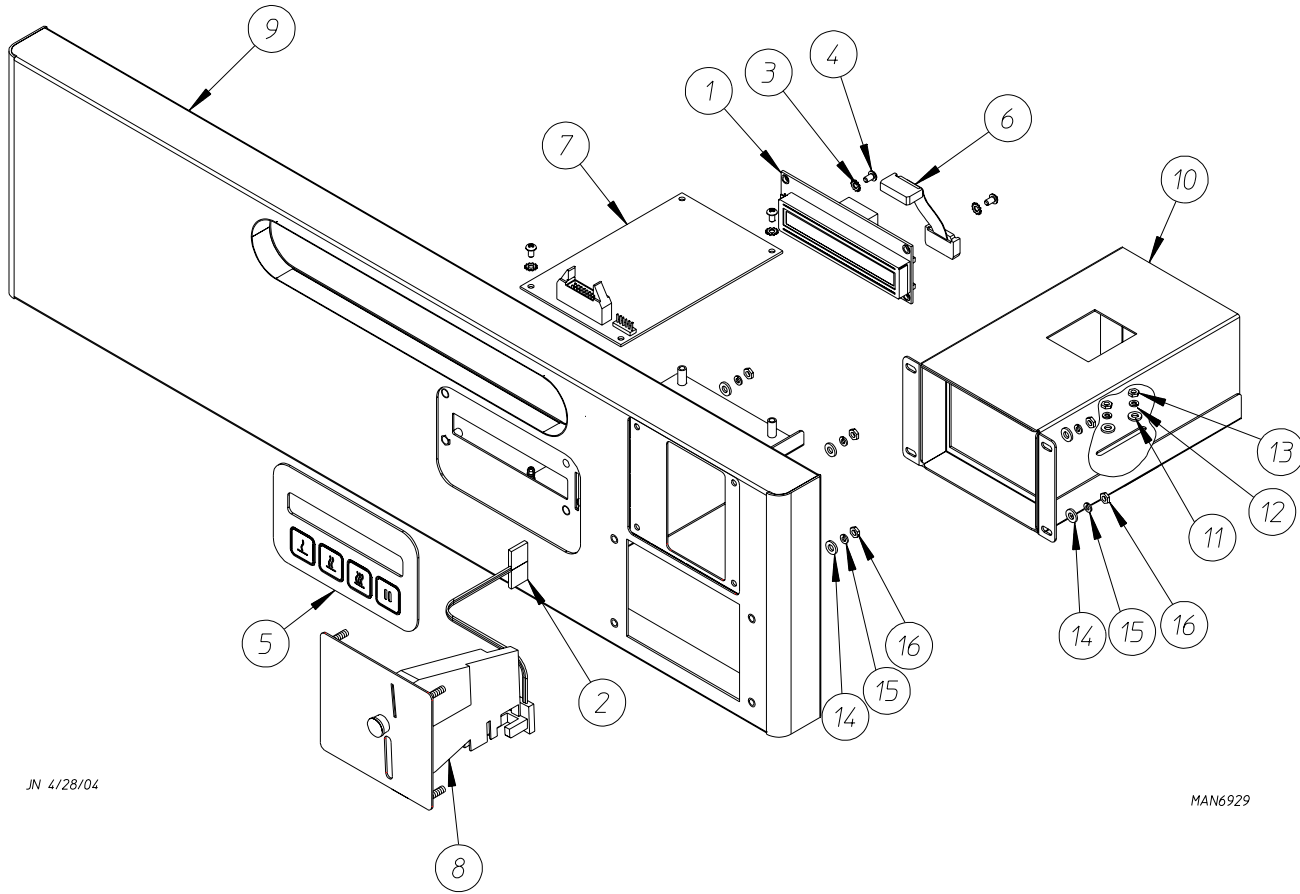
For Top Control Models



<u>Illus. No.</u>	<u>Part No.</u>	<u>Qty.</u>	<u>Description</u>
1	137270	1	Large Character Display
2	883774	1	Optic Switch
3	153010	4	#6 Star Washer
4	150005	4	#6-32 x 1/4" Phillips Round Head Machine Screw
5	112579	1	Phase 7.3 Coin Keypad
6	137250	1	Phase 7.3 Ribbon Cable
7	887011	1	Phase 7.3.2 Board without a Fire Suppression System (for models mfd. as of January 22, 2004)
	887012	1	Phase 7.3.2 Board with a Fire Suppression System (for models mfd. as of January 22, 2004)
	887009	1	Phase 7.3.2 Board with a Fire Suppression System (for models mfd. prior to January 22, 2004)
8	884029	1	25¢ US Optic Coin Acceptor
9	818467	1	Black Control Panel
10	818132	1	Coin Vault for Top Control
11	818206	1	Magnetic Switch
12	818500	1	Coin Vault Bracket
13	150511	1	1/4-20 x 1" Tap Bolt
14	150300	4	#10-16 x 1/2" Hex Washer TEK Screw
15	153000	8	#8 Flat Washer
16	153012	8	#8 Star Washer
17	152015	8	#8-32 Hex Nut

Phase 7.3 Coin Bottom Panel Assembly

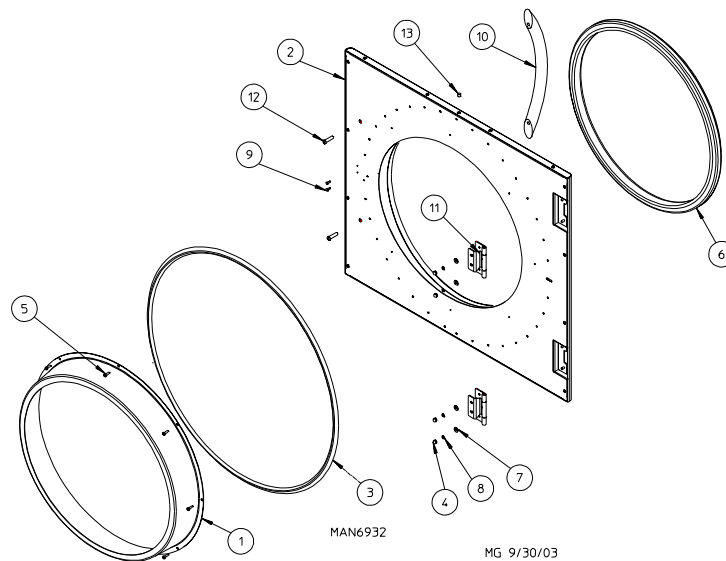
For Bottom Control Models



JN 4/28/04

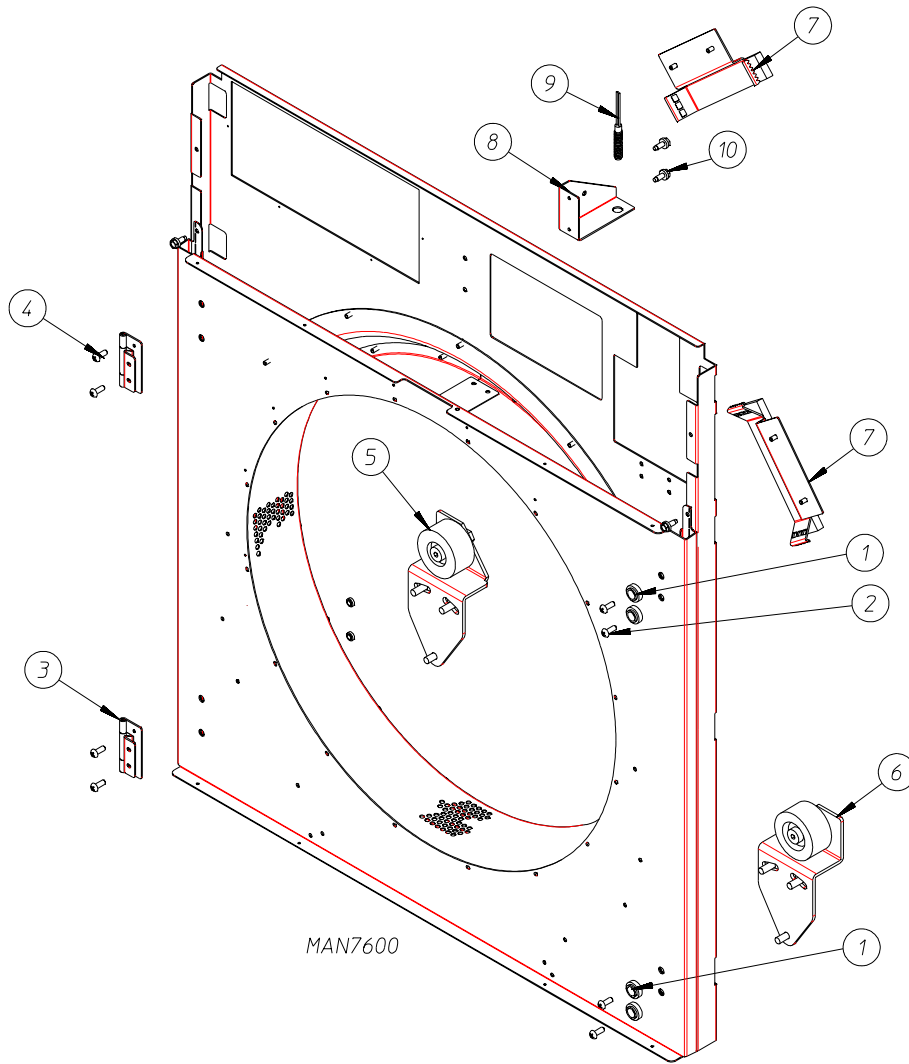
MAN6929

Illus. No.	Part No.	Qty.	Description
1	137270	1	Large Character Display
2	883774	1	Optic Switch
3	153010	4	#6 Star Washer
4	150005	4	#6-32 x 1/4" Phillips Round Head Machine Screw
5	112579	1	Phase 7.3 Coin Keypad
6	137250	1	Phase 7.3 Ribbon Cable
7	887011	1	Phase 7.3.2 Board without a Fire Suppression System (for models mfd. as of January 22, 2004)
	887012	1	Phase 7.3.2 Board with a Fire Suppression System (for models mfd. as of January 22, 2004)
	887009	1	Phase 7.3.2 Board with a Fire Suppression System (for models mfd. prior to January 22, 2004)
8	884029	1	25¢ US Optic Coin Acceptor
9	818424	1	Black Control Panel
10	818422	1	Coin Vault for Bottom Control
11	153049	2	13/64" x 7/8" Flat Washer
12	153024	2	#10 Lock Washer
13	152015	2	#8 Hex Nut
14	153049	2	13/64" x 7/8" Flat Washer
15	153012	8	#8 Star Washer
16	152015	8	#8-32 Hex Nut



<u>Illus. No.</u>	<u>Part No.</u>	<u>Qty.</u>	<u>Description</u>
1	883824	1	Door Pan with Glass
2	818832	1	Door Assembly Complete (right hinge) Stainless Steel (for models mfd. as of October 25, 2004) (includes illus. nos. 1 through 13)
	818830	1	Door Assembly Complete (right hinge) White (for models mfd. as of October 25, 2004) (includes illus. nos. 1 through 13)
	818833	1	Door Assembly Complete (left hinge) Stainless Steel (for models mfd. as of October 25, 2004) (includes illus. nos. 1 through 13)
	818831	1	Door Assembly Complete (left hinge) White (for models mfd. as of October 25, 2004) (includes illus. nos. 1 through 13)
	818562	1	Door Assembly Complete (right hinge) Stainless Steel (for models mfd. prior to October 25, 2004) (includes illus. nos. 1 through 13)
	818689	1	Door Assembly Complete (right hinge) White (for models mfd. prior to October 25, 2004) (includes illus. nos. 1 through 13)
	818561	1	Door Assembly Complete (left hinge) Stainless Steel (for models mfd. prior to October 25, 2004) (includes illus. nos. 1 through 13)
3	102348	1	Inner Door Gasket (for models mfd. prior to October 25, 2004)
4	151016	4	#8-32 Acorn Nut
5	150322	8	#6 x 1/2" Self-Drilling Screw
6	102314	1	Outer Door Gasket
	401010	1	Adhesive for Door Gasket (5 oz. tube) ... Not Illustrated
7	153000	4	#8 Flat Washer
8	153012	4	#8 Star Washer
9	150327	2	#6 x 1/2" Phillips Flat Head Screw
10	887175	1	Silver Door Handle
	819838	1	White Door Handle
11	103067	2	Door Hinge (for models mfd. as of November 20, 2003)
	884134	2	Door Hinge (for models mfd. prior to November 20, 2003)
12	150328	2	1/4-20 x 1" Stainless Steel Phillips Head Screw
13	170608	1	Magnet

Middle Front Panel Assembly

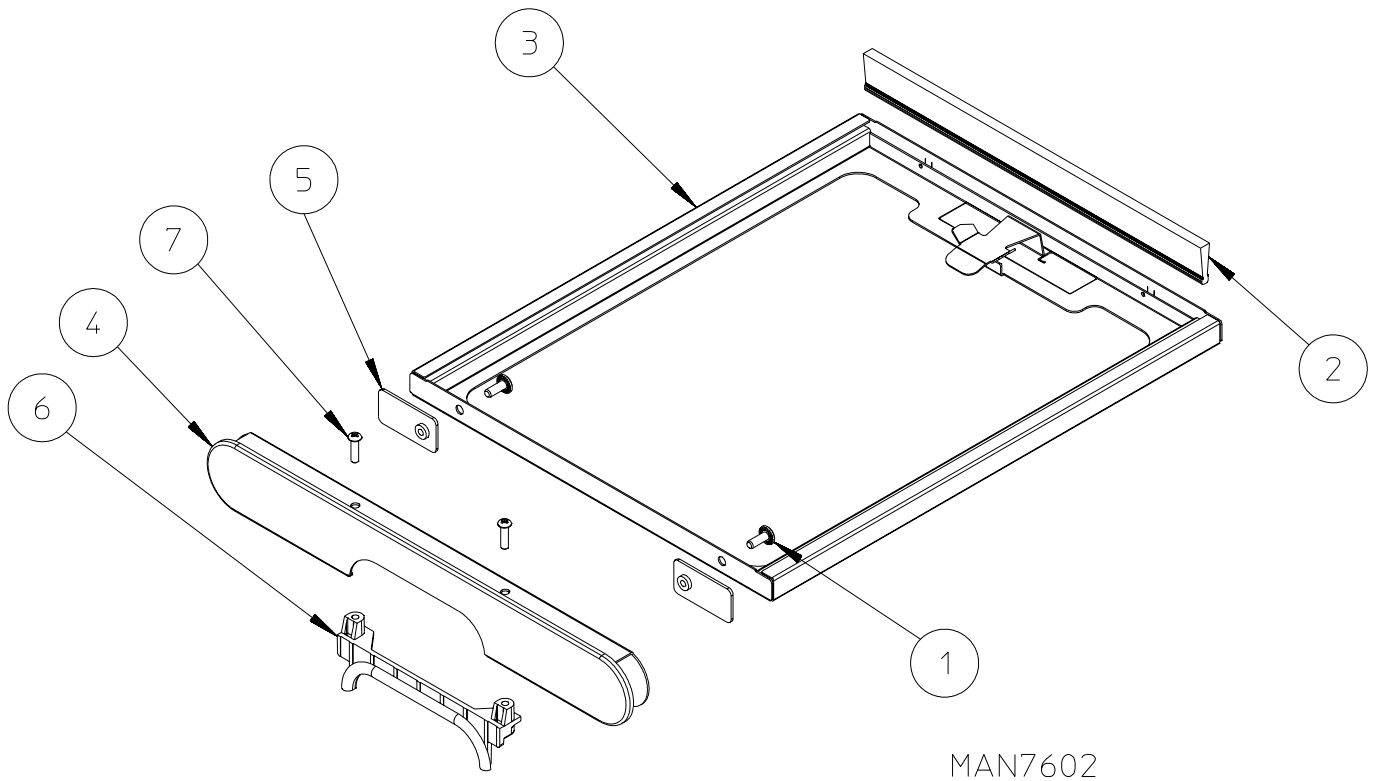


Illus. No.	Part No.	Qty.	Description
1	102004	4	Door Magnet
2	152224	4	#10-32 x 1/2" Flat Head Spanner Machine Screw
3	103067	2	Door Hinge (for models mfd. as of November 20, 2003)
	884134	2	Door Hinge (for models mfd. prior to November 20, 2003)
4	150321	4	#10-32 x 1/2" Phillips Head Machine Screw
5	818184	1	Front Left Wheel Assembly (refer to Front Tumbler Wheel Assemblies on page 18)
6	818183	1	Front Right Wheel Assembly (refer to Front Tumbler Wheel Assemblies on page 18)
7*	818609	2	Front Felt Pad with Mounting Rivets
8	318234	1	Rotational Sensor Bracket
9	818206	1	Rotational Sensor
10	150300	2	#10-16 x 1/2" Hex Washer TEK Screw

* Complete kit of front and rear pads with instructions (P/N 884172).

Lint Drawer Assembly

For Models Mfd. as of July 29, 2005

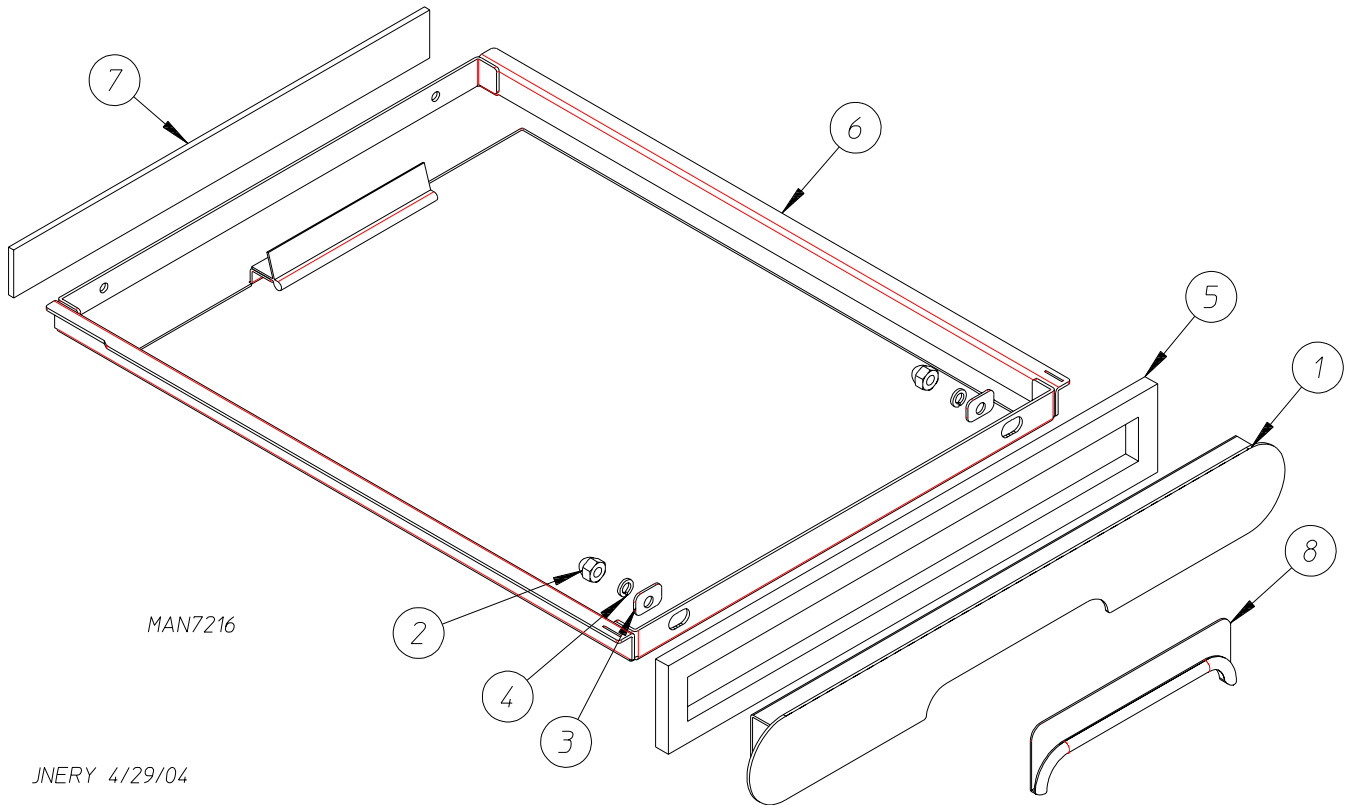


Illus. No.	Part No.	Qty.	Description
1	183129	2	#10-32 x 1/2" TORX® Head Machine Screw
2	170168	1	Brush
3	818801	1	Lint Drawer
	819345*	1	Lint Drawer Assembly Complete (includes illus. nos. 1 through 7)
4	819344*	1	Cold Rolled Steel Lint Drawer Handle
5	819287	2	Lint Drawer Handle Fastening Plate Assembly
6	185226	1	Black Lint Screen Handle Molded
7	150334	2	#8-16 x 9/32" Phillips Pan Head Screw

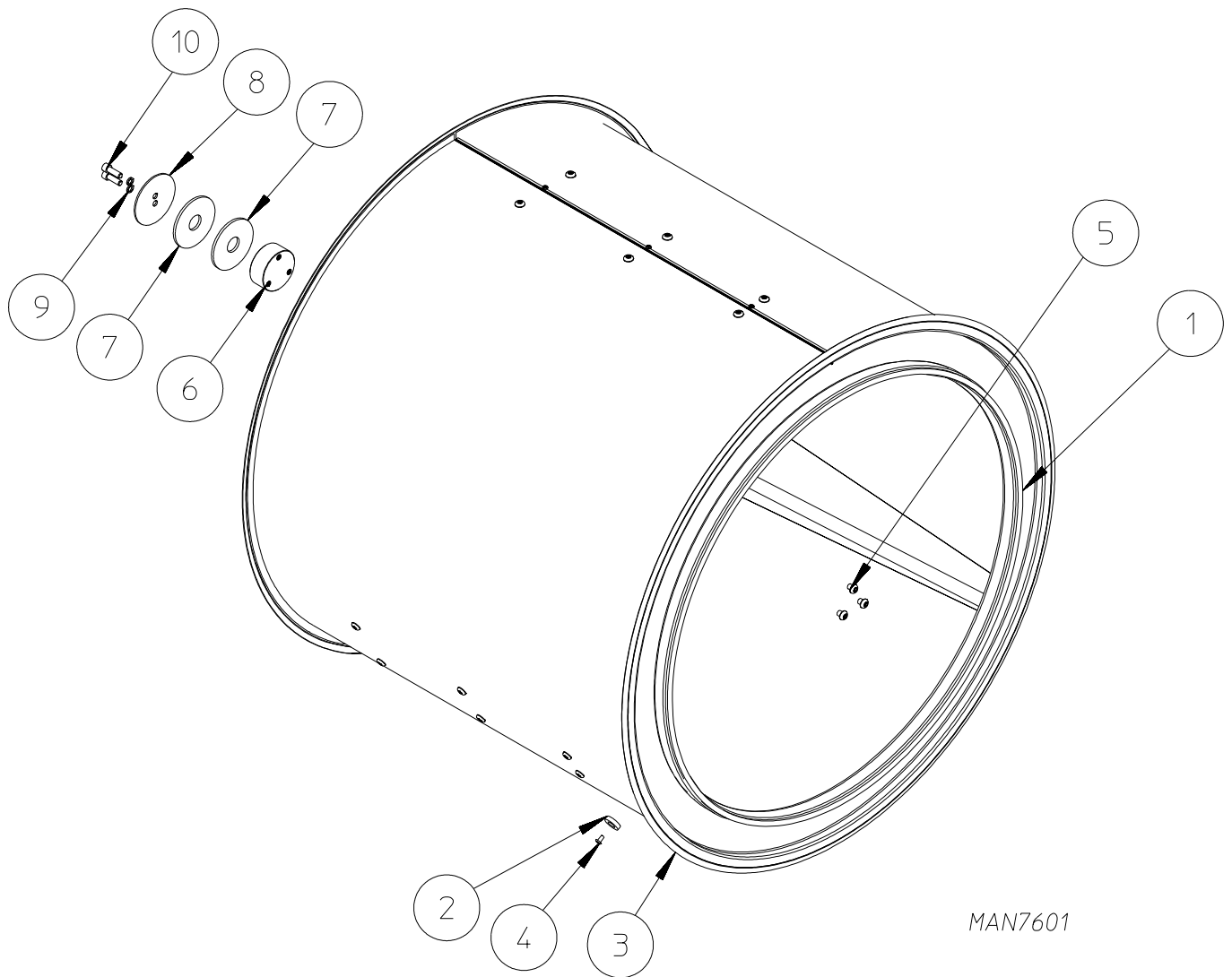
* Specify color when ordering.

Lint Drawer Assembly

For Models Mfd. prior to July 29, 2005



<u>Illus. No.</u>	<u>Part No.</u>	<u>Qty.</u>	<u>Description</u>
1	883751	1	Stainless Steel Lint Drawer Handle (includes illus. nos. 1 through 5 and 8)
	883859	1	Black Cold Rolled Steel Lint Drawer Handle (includes illus. nos. 1 through 5 and 8)
	818166	1	Lint Drawer Complete with Stainless Steel Handle (includes illus. nos. 1 through 8)
	818471	1	Lint Drawer Complete with Cold Rolled Steel Handle (includes illus. nos. 1 through 8)
2	151010	2	#10-32 Hex Acorn Locknut
3	153024	2	#10 Lock Washer
4	318541	2	Offset Washer
5	117605	2	Gasket (sold by the foot)
6	883752	1	Lint Drawer Assembly (includes illus. nos. 6 and 7)
7	116054	1	Lint Drawer Felt
8	102347	1	Lint Drawer Handle Pad

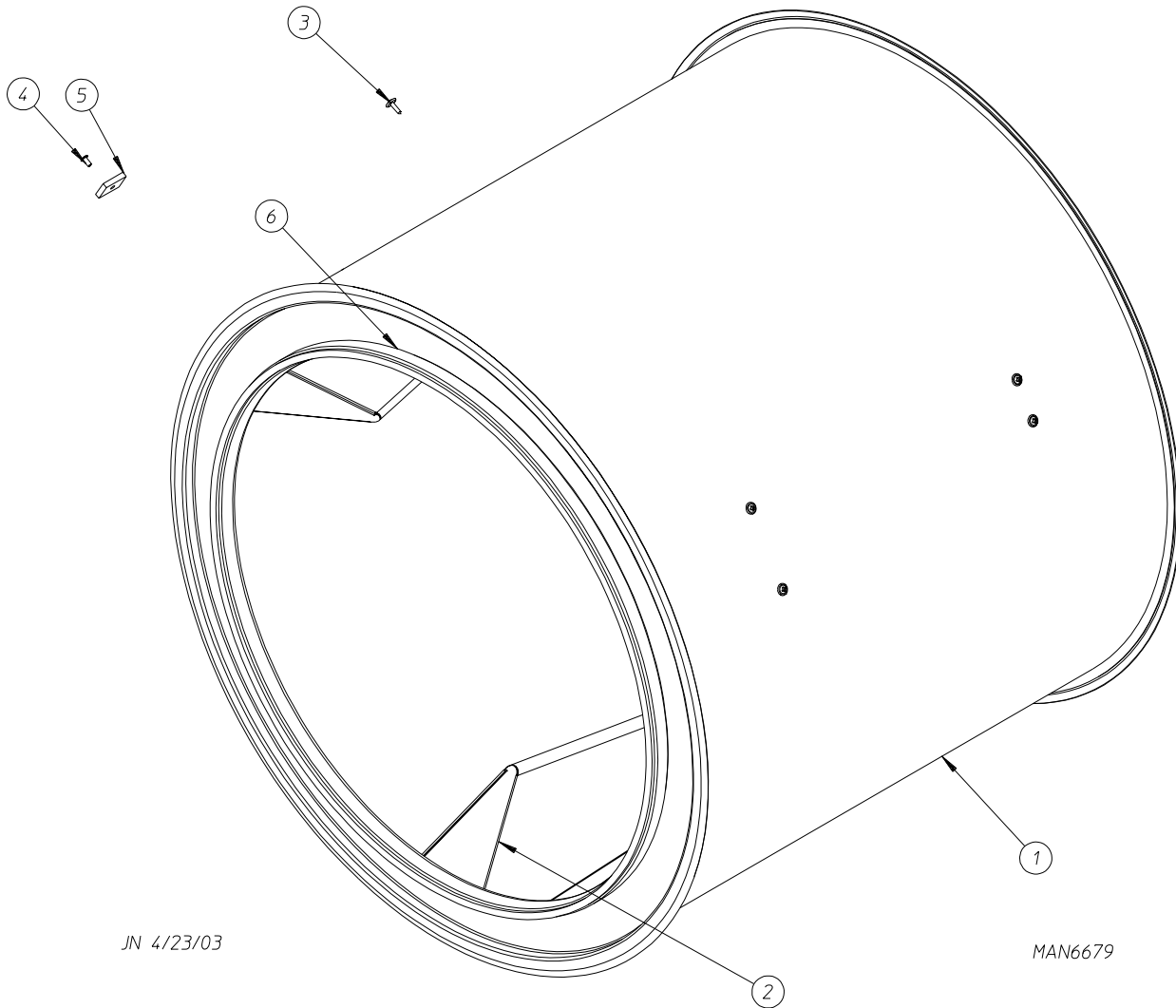


MAN7601

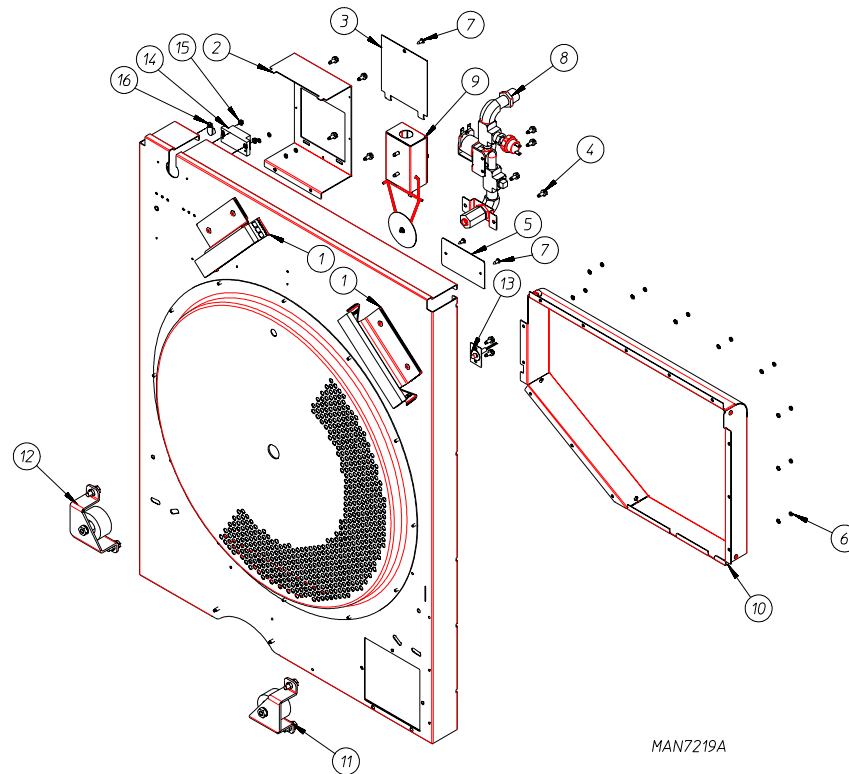
<u>Illus. No.</u>	<u>Part No.</u>	<u>Qty.</u>	<u>Description</u>
1	115906	2	Tumbler Felt
	401010	1	Adhesive for Felt Collar (5 oz. tube) ... Not Illustrated
2	102004	1	Rotational Sensor Magnet
3	884363	1	Tumbler Assembly Complete
4	154217	1	1/8" x 1/2" Pop Rivet
5	150123	3	1/4-20 x 1/4" Socket Button Head Cap Screw
6	318784	1	Tumbler Shaft
7	153048	2	Friction Pad
8	185426	1	Dual Screw Backup Washer
9	153072	2	Lock Washer
10	150445	2	1/4-20 x 3/4" Socket Head Cap Screw

Tumbler Assembly

For Models Mfd. prior to May 2004



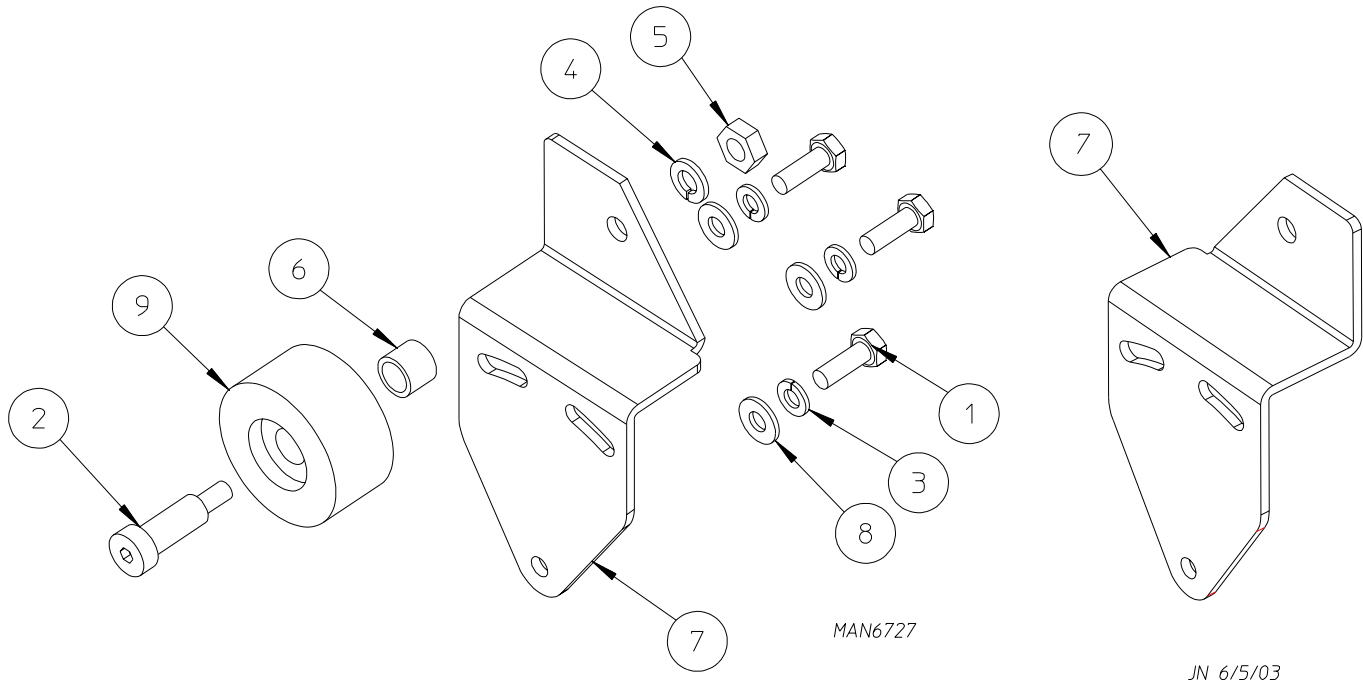
<u>Illus. No.</u>	<u>Part No.</u>	<u>Qty.</u>	<u>Description</u>
1	884359	1	Tumbler Assembly (includes illus. nos. 1 through 6)
2	318242	3	5" Tapered Rib
3	150313	12	#10-16 x 1/2" TORX PLUS® BTN, Type 1
4	154217	1	1/8" x 1/2" Pop Rivet
5	102102	1	Rotational Sensor Magnet
6	115906	2	Tumbler Felt
	401010	1	Adhesive for Felt Collar (5 oz. tube) ... Not Illustrated



Illus. No.	Part No.	Qty.	Description
1*	818608	2	Rear Felt Pad with Shims and Pop Rivets
2	318695	1	Junction Box (for models mfd. as of August 21, 2003)
	318628	1	Junction Box (for models mfd. prior to August 21, 2003)
3	318629	1	Electric Cover
4	150300	16	#10-16 x 1/2" Hex Washer TEK Screw
5	318691	1	Cover Plate (for dryers without a fire suppression system)
6	153073	15	#8-32 KEPS Nut
7	150301	2	#8-18 x 7/16" Phillips Pan Head TEK Screw
8	818487	1	Fire Suppression System Assembly (refer to Fire Suppression System Piping Assembly on page 20)
9	818570	1	Sail Switch Assembly (for models mfd. as of January 23, 2004) (refer to Sail Switch Assembly on page 32)
	818114	1	Sail Switch Assembly (for models mfd. prior to January 23, 2004) (refer to Sail Switch Assembly on page 32)
10	818489	1	Heat Duct Assembly
11	818109	1	Rear Right Wheel Assembly (refer to Rear Tumbler Wheel Assemblies on page 19)
12	818110	1	Rear Left Wheel Assembly (refer to Rear Tumbler Wheel Assemblies on page 19)
13	818228	1	Fire Suppression System Temperature Sensor (refer to Temperature Sensor Assemblies on page 21)
14	120716	1	2-Position Terminal Block (gas models Only)
	120728	1	4-Position Terminal Block (electric models Only)
15	151001	2	#8-32 Pal Nut
16	121010	2	Ground Lug

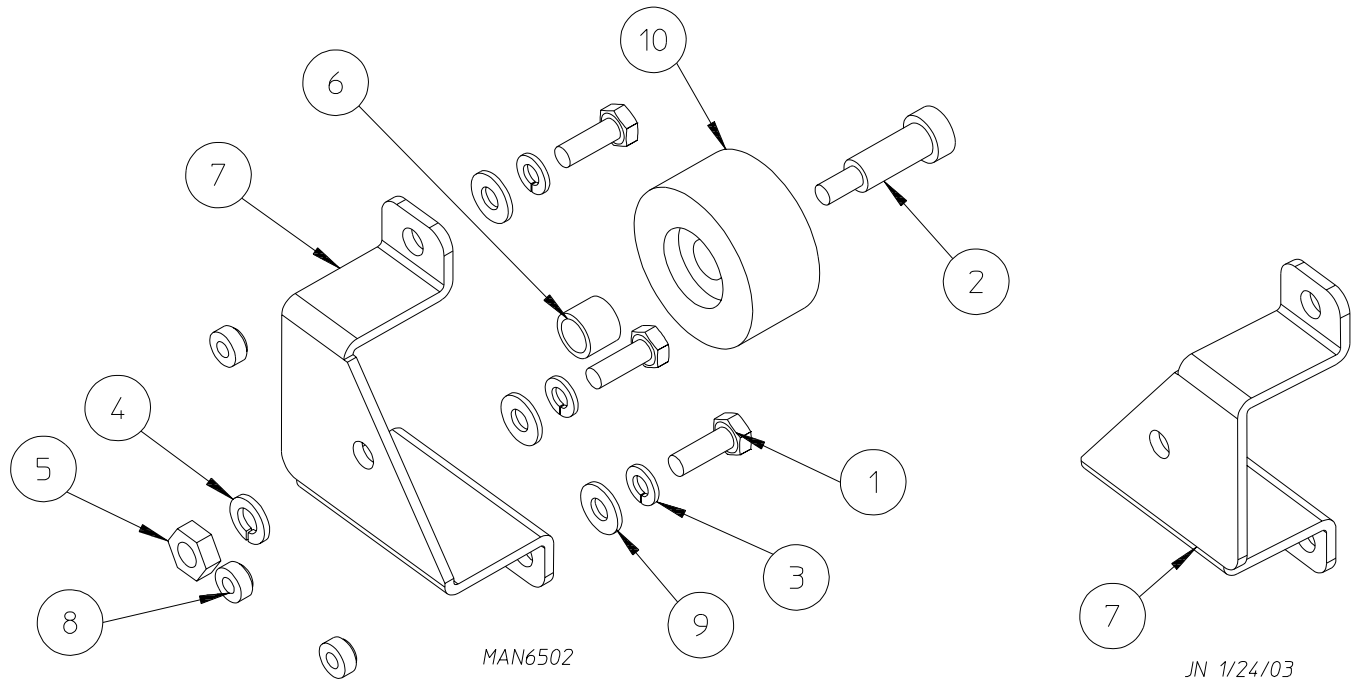
* Complete kit of front and rear pads with instructions (P/N 884172).

Front Tumbler Wheel Assemblies



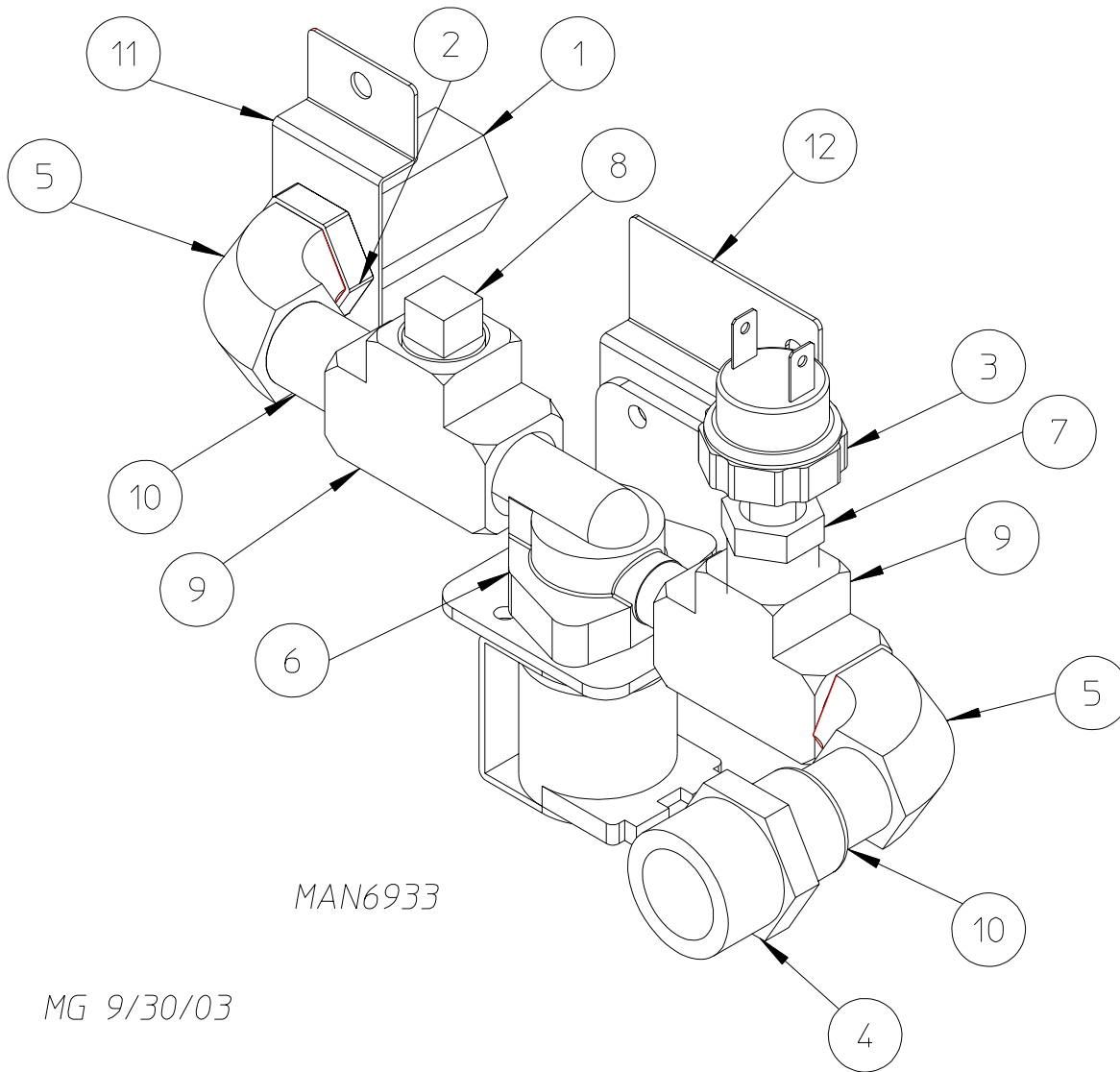
Illus. No.	Part No.	Qty.	Description
1	150510	3	1/4-20 x 3/4" Hex Head Machine Bolt
2	154264	1	M10 x 25mm Shoulder Screw
3	153007	3	1/4" Lock Washer
4	153002	1	5/16" Lock Washer
5	154013	1	M8 Hex Nut
6	154284	1	Tumbler Wheel Spacer
7	818183	1	Front Right Wheel Assembly Complete (includes illus. nos. 1 through 9)
	318532	1	Front Right Roller Wheel Bracket
	818184	1	Front Left Wheel Assembly Complete (includes illus. nos. 1 through 9)
	318531	1	Front Left Roller Wheel Bracket
8	153018	3	1/4" Flat Washer
9	180050	1	Tumbler Wheel

Rear Tumbler Wheel Assemblies



Illus. No.	Part No.	Qty.	Description
1	150510	3	1/4-20 x 3/4" Hex Head Machine Bolt
2	154264	1	M10 x 25mm Shoulder Screw
3	153007	3	1/4" Lock Washer
4	153002	1	5/16" Lock Washer
5	154013	1	M8 Hex Nut
6	154284	1	Tumbler Wheel Spacer
7	818110	1	Rear Left Wheel Assembly Complete (includes illus. nos. 1 through 10)
	318232	1	Rear Left Wheel Bracket
	818109	1	Rear Right Wheel Assembly Complete (includes illus. nos. 1 through 10)
	318233	1	Rear Right Wheel Bracket
8	153596	3	1/4-20 Clinch Nut
9	153018	3	1/4" Flat Washer
10	180050	1	Tumbler Wheel

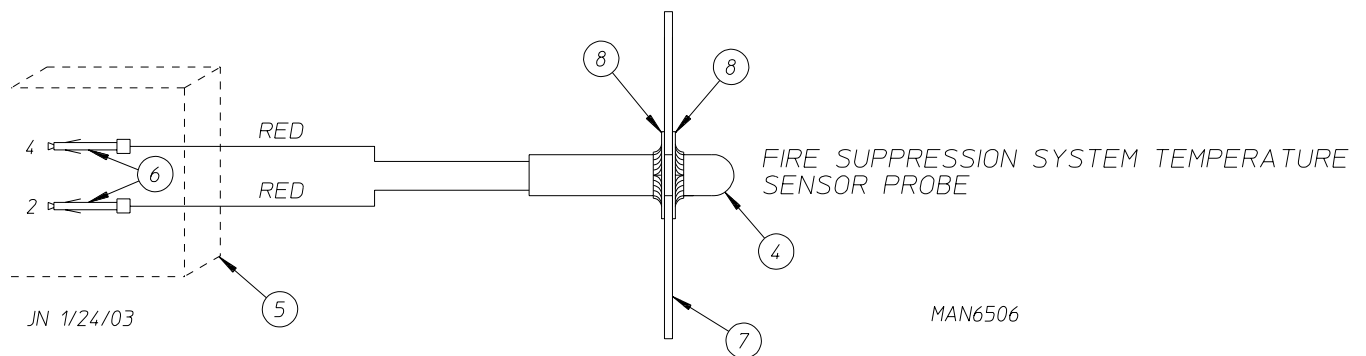
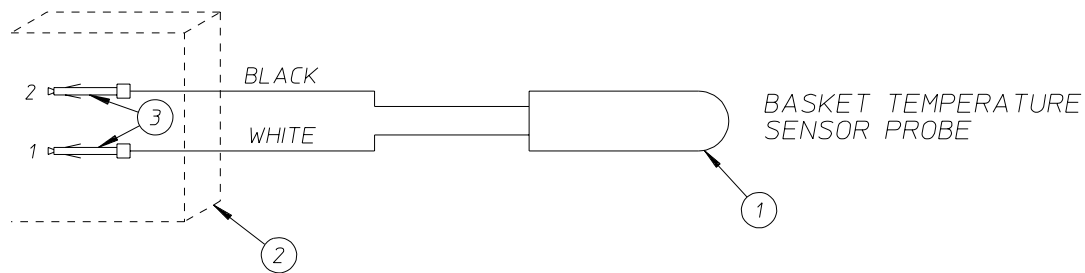
Fire Suppression System Piping Assembly



MAN6933

MG 9/30/03

Illus. No.	Part No.	Qty.	Description
1	143581	1	3/8" N.P.T. Spray Nozzle
2	143303	1	3/8" N.P.T. Brass Locknut
3	136987	1	Pressure Switch
4	143025	1	3/4"-11.5 NH x 3/8" N.P.T. Hose Adaptor
5	143155	2	3/8" Brass Street Elbow
6	165114	1	Solenoid Valve 24V 50/60 Hz
7	143315	1	3/8" M.P.T. x 1/8" Brass Bushing
8	143251	1	3/8" M.P.T. Brass Plug
9	143220	2	3/8" F.P.T. Brass Tee
10	143241	2	3/8" Close Brass Nipple
11	318422	1	Bracket
12	318662	1	Mounting Bracket
—	818487	1	Fire Suppression System Assembly (includes illus. nos. 1 through 12)

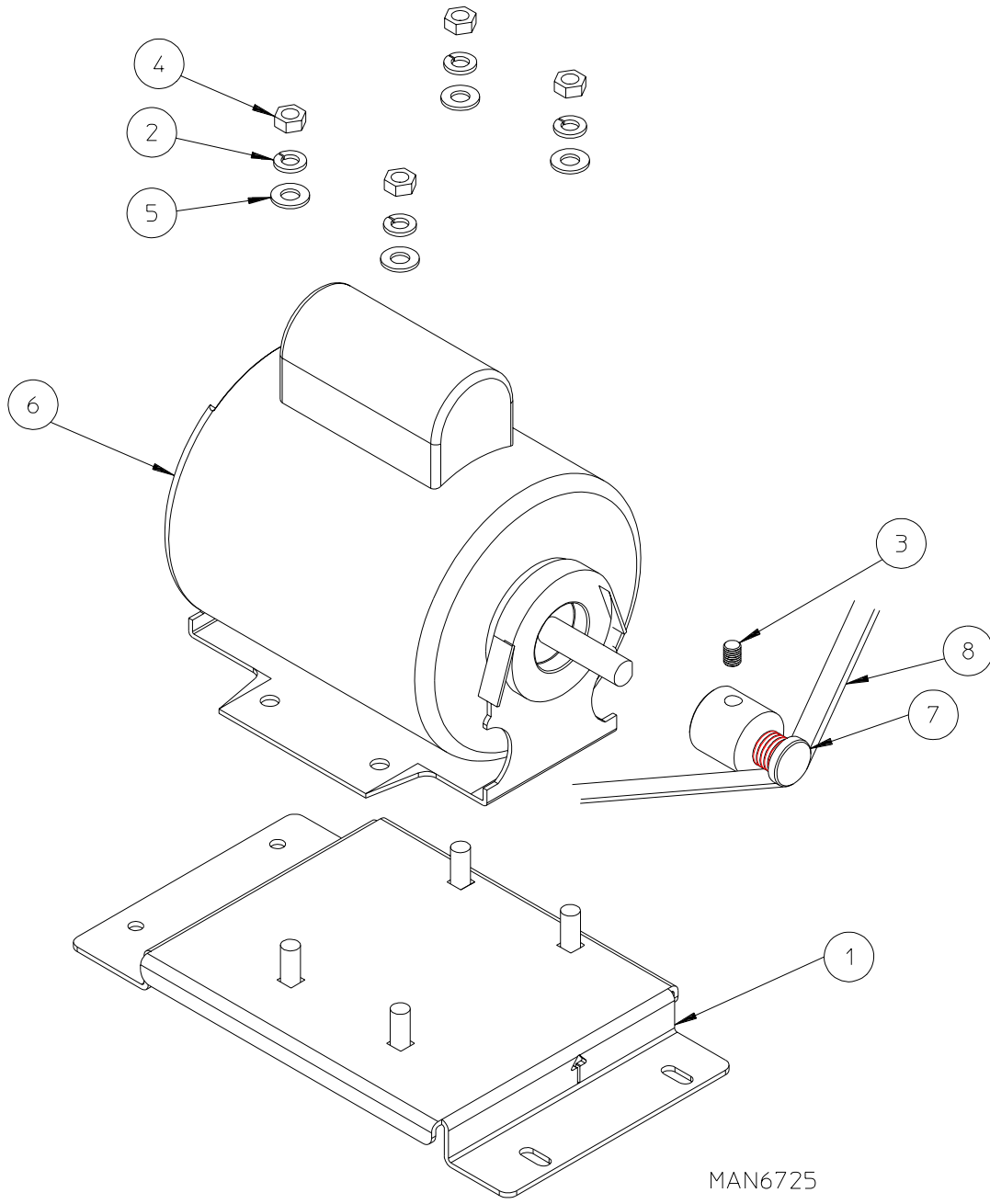


JN 1/24/03

MAN6506

Illus. No.	Part No.	Qty.	Description
1	818207	1	Tumbler Temperature Sensor Probe (includes illus. nos. 1 through 3)
2	122646	1	2-Pin Plug
3	122691	2	Socket Terminal
4	883821	1	Fire Suppression System Temperature Sensor Probe Assembly Complete (includes illus. nos. 4 through 8)
5	122646	1	2-Pin Plug
6	122691	2	Socket Terminal
7	318525	1	Fire Suppression System Probe Bracket
8	154007	2	Push-On Fastener

Motor Drive Assembly

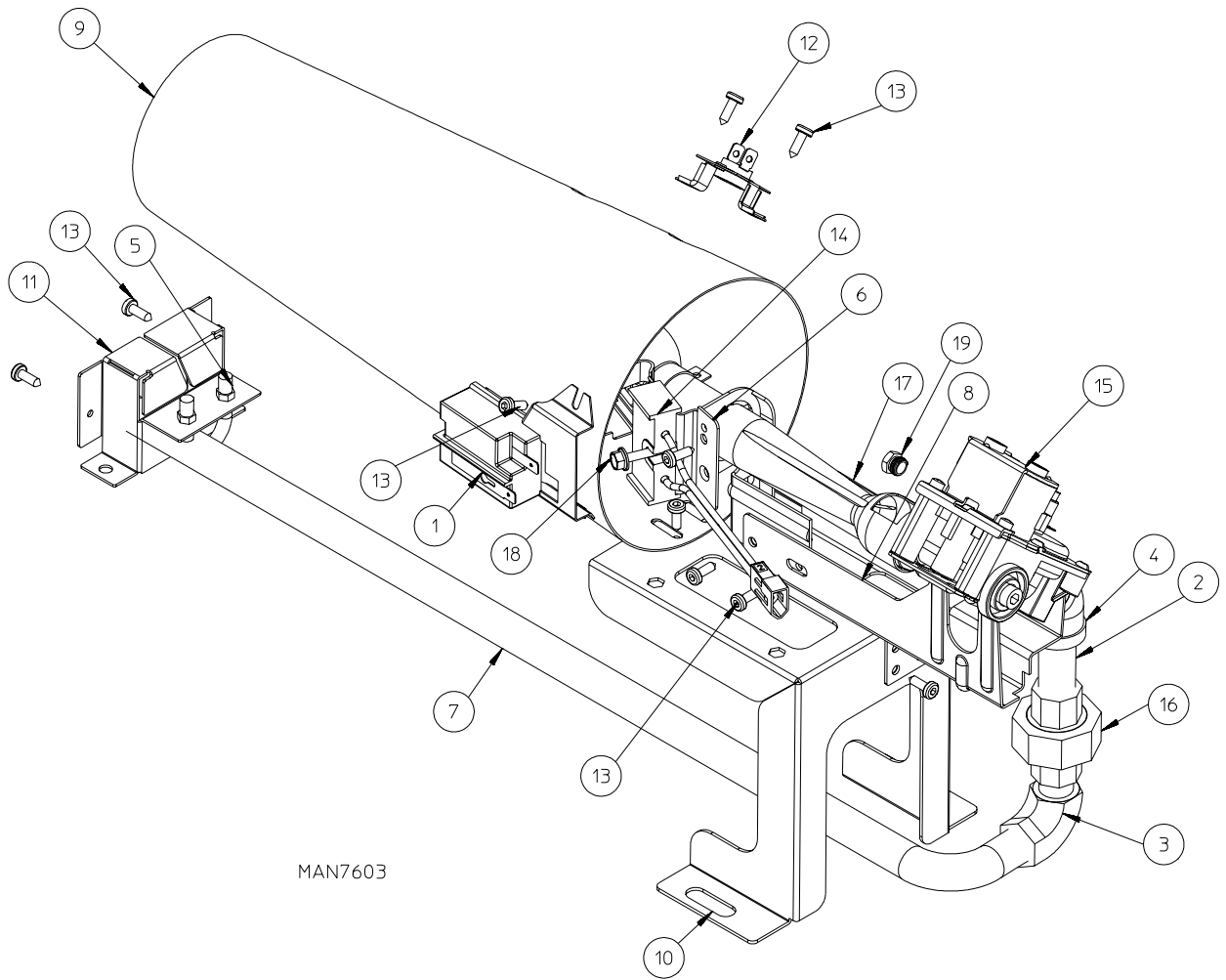


MAN6725

JN 6/5/03

<u>Illus. No.</u>	<u>Part No.</u>	<u>Qty.</u>	<u>Description</u>
1	818200	1	Motor Base Plate (with studs)
2	153002	4	5/16" Lock Washer
3	154321	1	5/16" x 3/8" Allen Setscrew
4	152004	4	5/16-18 Hex Nut
5	153001	4	5/16" Flat Washer
6	887091	1	Motor with Sheave (60 Hz models)
	887090	1	Motor with Sheave (50 Hz models)
7	318247	1	4-Pole Motor Sheave (60 Hz models)
	318248	1	4-Pole Motor Sheave (50 Hz models)
8	100197	1	Drive Belt

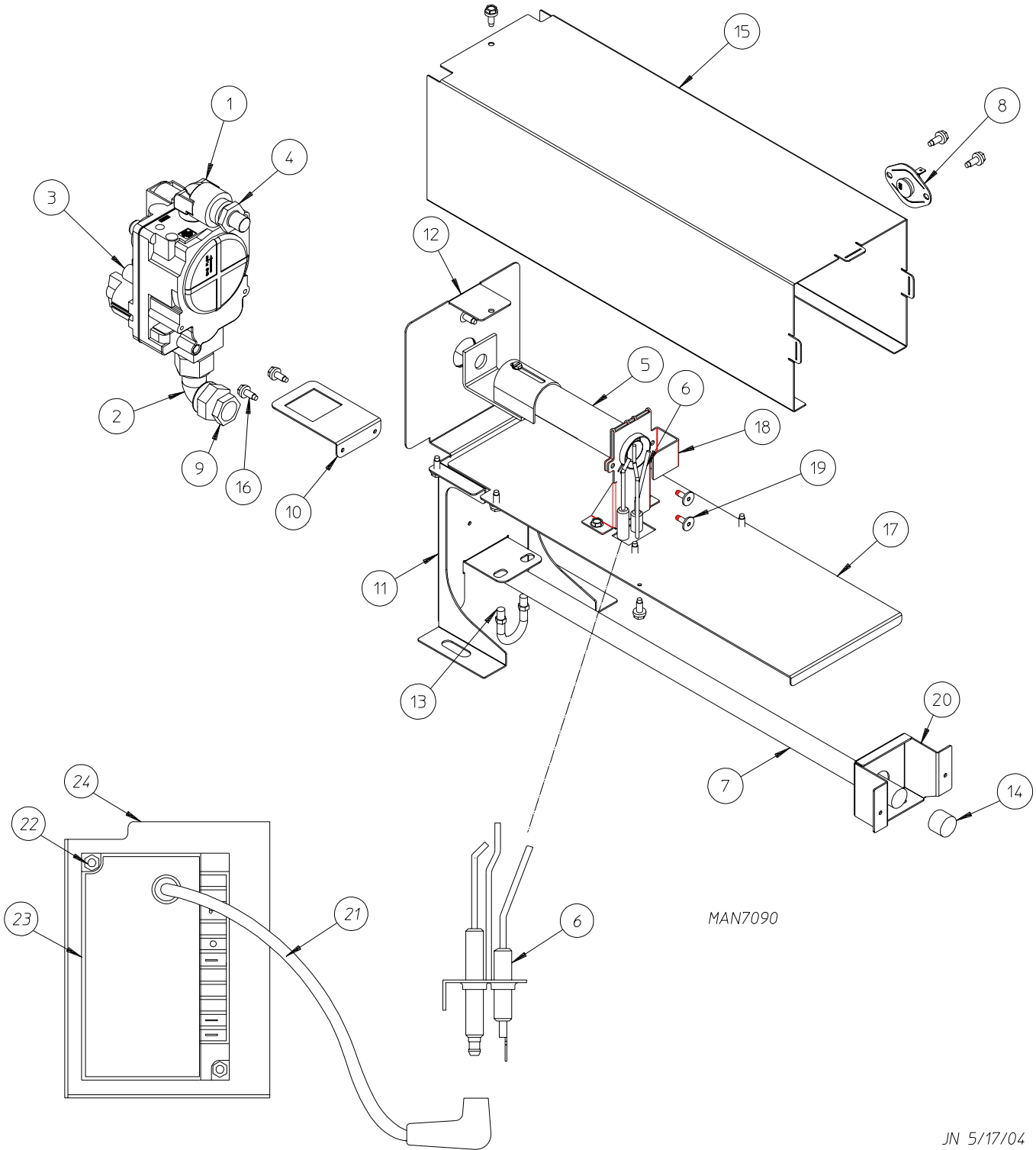
Hot Surface Ignition Burner Assembly



MAN7603

<u>Illus. No.</u>	<u>Part No.</u>	<u>Qty.</u>	<u>Description</u>
1	130500	1	Radiant Sensor
2	142631	1	3/8" x 2" Bi-Pipe Nipple
3	142633	1	3/8" Street Elbow
4	142635	1	3/8" 45° Street Elbow
5	154356	1	U-Bolt for 3/8" Pipe
6	183139	1	Hot Surface Ignition Igniter Bracket
7	183140	1	3/8" N.P.T. Male 90° Pipe
8	183141	1	Hot Surface Ignition Burner Base
9	183143	1	Burner Cone
10	318491	1	Gas Train Support Bracket
11	318835	1	Gas Pipe Bracket
12	183112	1	205° Gas Hi-Limit Thermostat
13	150331	12	#8-18 x 1/2" Pan Head TORX® Screw
14	128910	1	Globar®
15	128944	1	25M Gas Valve 120VAC 60 Hz
	128907	1	25M Gas Valve 120VAC 50 Hz
16	142632	1	3/8" Black Union
17	183144	1	Inshot Hot Surface Ignition Tube
18	183145	1	Globar® Mounting Screw with Copper Washer
19	140873	1	#30 Natural Gas Orifice
	140874	1	#49 Liquid Propane Gas Orifice
	884110	1	Liquid Propane Conversion Kit

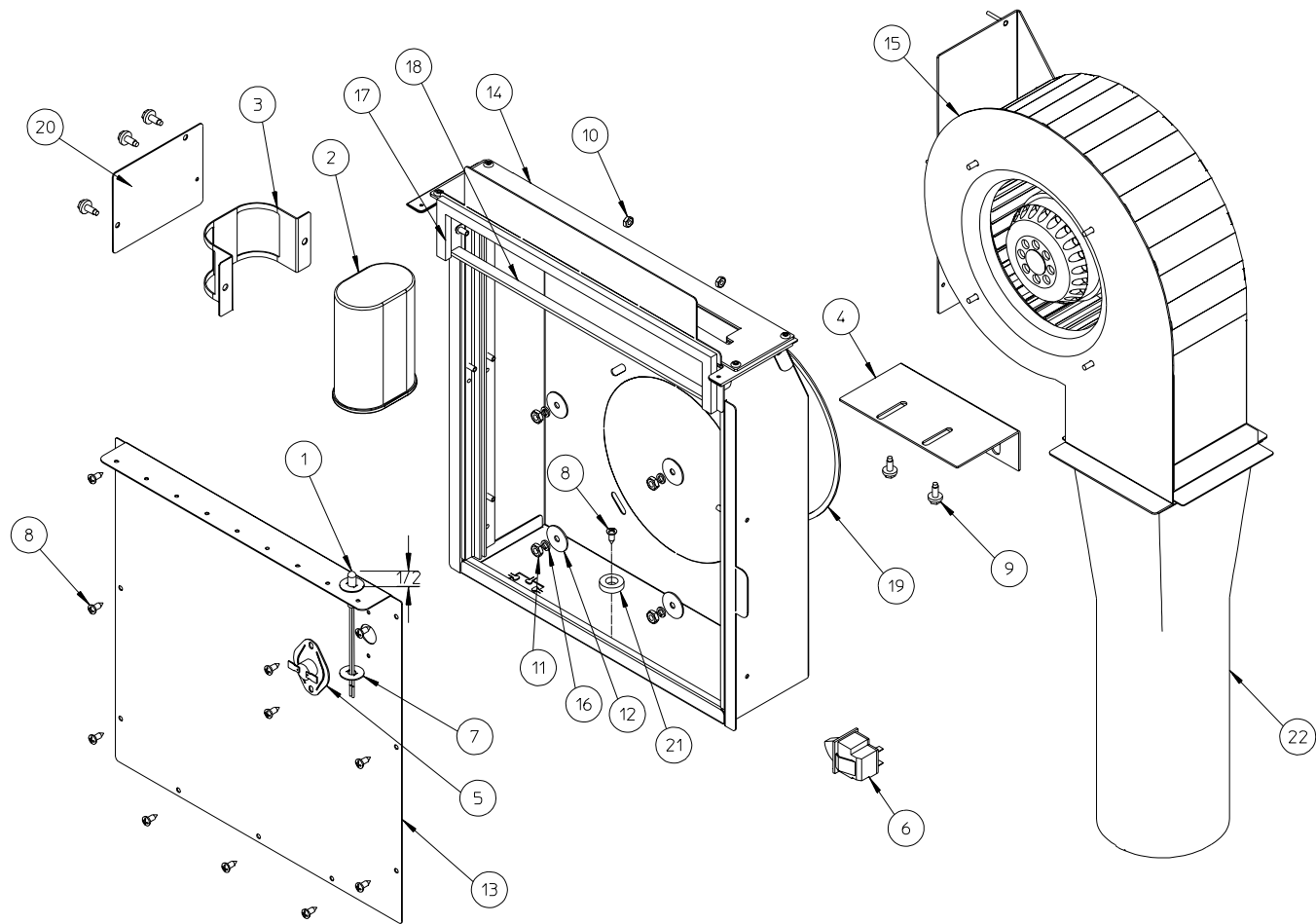
Direct Spark Ignition Burner Assembly



Direct Spark Ignition Burner Assembly

<u>Illus. No.</u>	<u>Part No.</u>	<u>Qty.</u>	<u>Description</u>
1	143226	1	1/2" Brass Street Elbow
2	141317	1	1/2" Bronze Union Elbow
3	128927	1	Gas Valve
	128933	1	(CE) Gas Valve
4	140868	1	#31 Burner Orifice (natural gas) 40K Btu Burner
	140869	1	#49 Burner Orifice (liquid propane gas) 40K Btu Burner
	883610	1	Liquid Propane Conversion Kit (includes orifice) 40K Burner
	140870	1	#34 Burner Orifice (natural gas) 35K Btu Burner
	140871	1	#51 Burner Orifice (liquid propane gas) 35K Btu Burner
	883799	1	Liquid Propane Conversion Kit (includes orifice) 35K Burner
5	141129	1	Inshot Burner
6	882451	1	Ignitor Probe Assembly with High Voltage Wire (includes illus. nos. 6 and 21)
7	142634	1	3/8" x 19" Pipe Nipple
8	130400	1	290° Thermostat (for models mfd. as of August 5, 2003)
	130403	1	330° Thermostat (for models mfd. prior to August 5, 2003)
9	142953	1	3/8" x 1/2" Steel Bushing
10	318519	1	Gas Valve Support Bracket
	318685	1	(CE) Gas Valve Support Bracket
11	318561	1	Oven Mounting Bracket
	318686	1	(CE) Oven Mounting Bracket
12	318547	1	Burner Retainer Bracket
13	154356	1	U-Bolt 3/8" Pipe
14	143181	1	Tear Tab Pipe Cap
15	318625	1	Burner Box Cover
16	150300	17	#10-16 x 1/2" Hex Washer TEK Screw
17	318343	1	Burner Box Base
18	318421	1	Burner Tube Bracket
19	154217	2	1/8" Pop Rivet
20	318634	1	Gas Pipe Bracket
21	884147	1	High Voltage Ignition Cable Assembly for Fenwal (for models mfd. as of February 2004)
	128919	1	High Voltage Ignition Cable with Cap (for models mfd. prior to February 2004)
22	152013	2	#6-32 Hex Nut
23	887133	1	Fenwal Direct Spark Ignition Module (for models mfd. as of February 2004)
	883849	1	Direct Spark Ignition Module with 3 Tries (for models mfd. prior to February 2004)
	887209	1	(CE) Direct Spark Ignition Module with 2 Tries
24	818534	1	Fenwal Direct Spark Ignition Mounting Bracket (Fenwal module Only)

Lint Box / Blower Motor Assembly

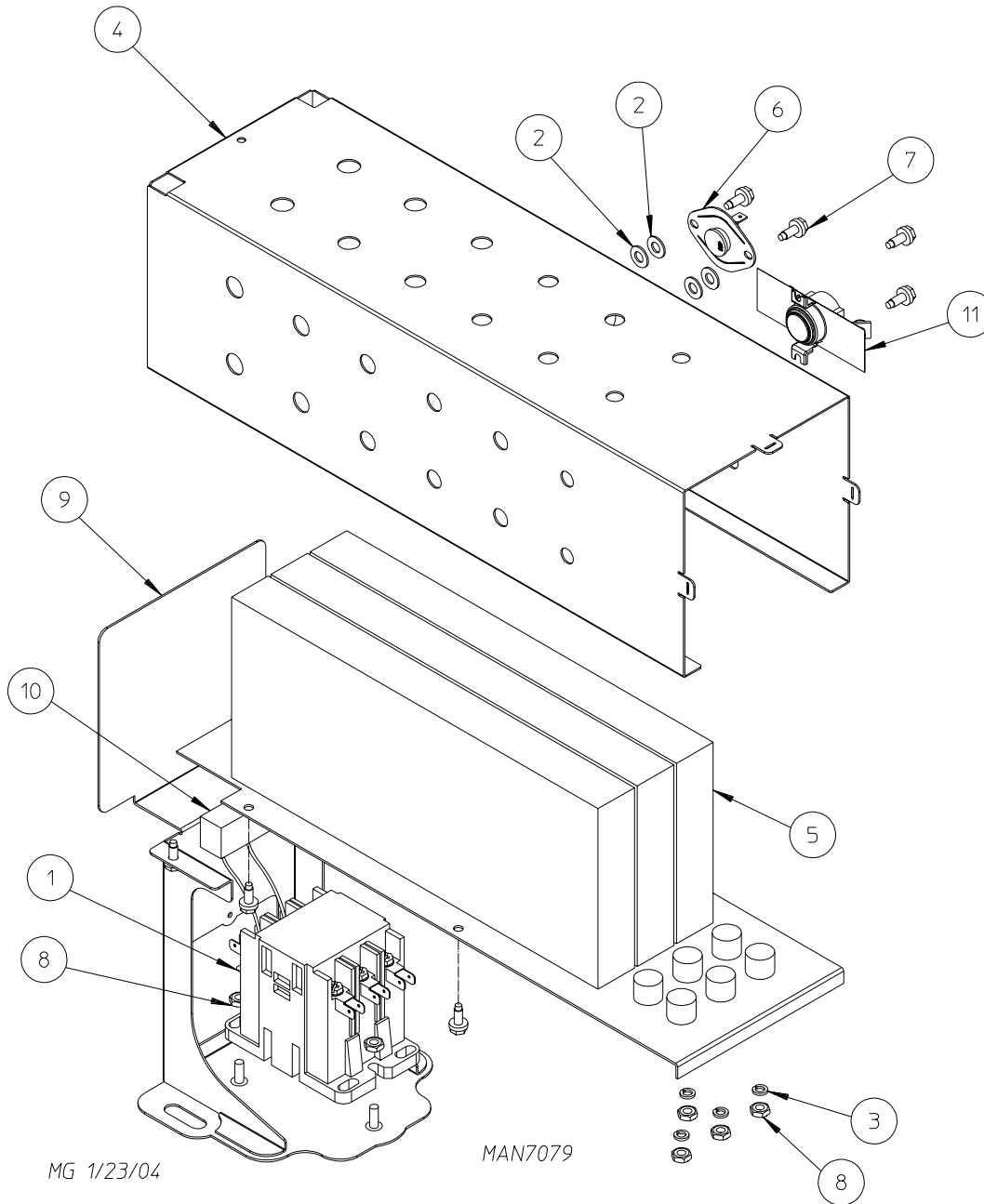


MG 9/30/03

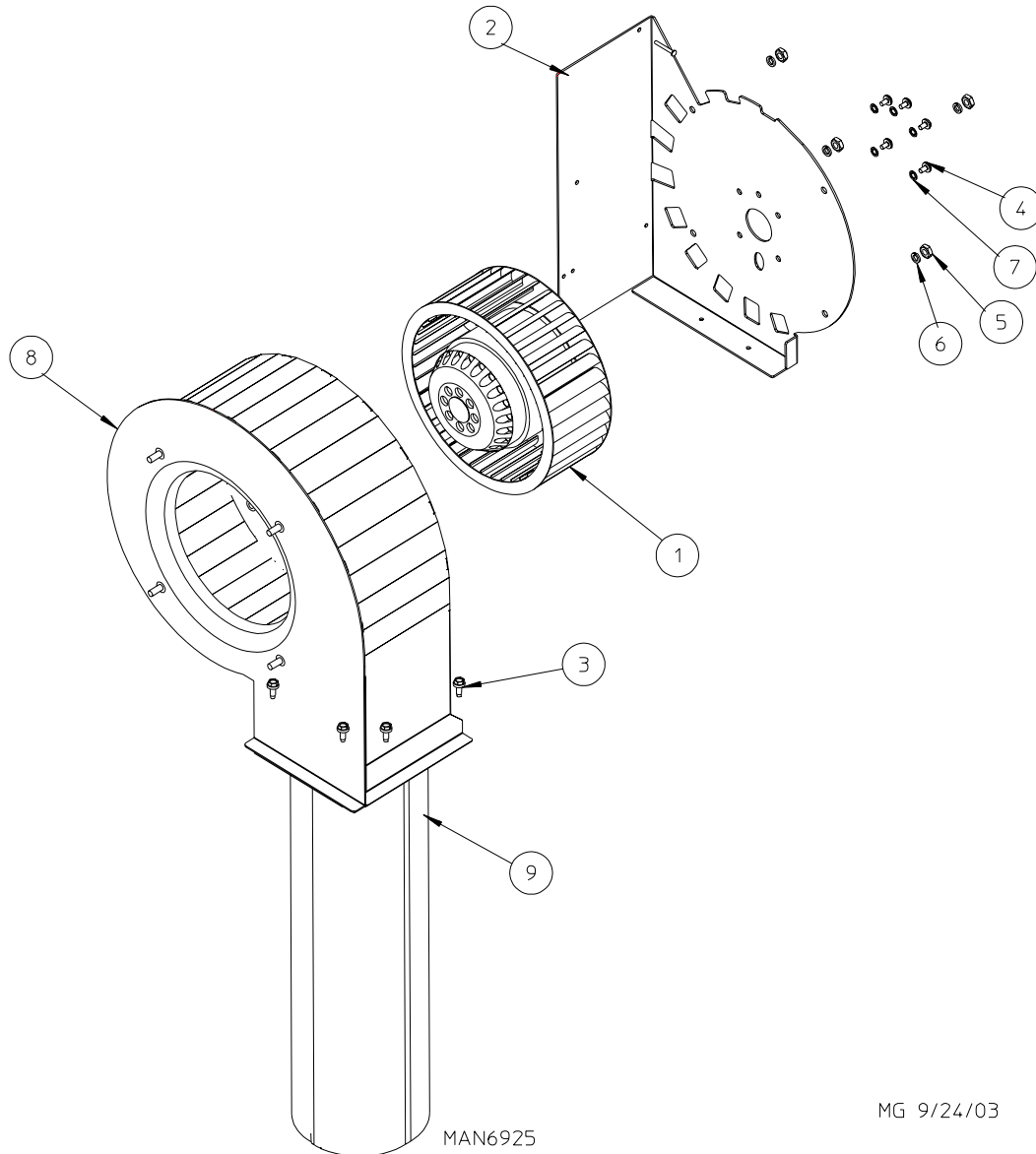
MAN6934

<u>Illus. No.</u>	<u>Part No.</u>	<u>Qty.</u>	<u>Description</u>
1	818207	1	Temperature Sensor Probe Assembly (refer to Temperature Sensor Assemblies on page 21)
2	100623	1	25 M.F.D. 440V Capacitor (for use with 120V blower)
	100633	1	6 M.F.D. 440V Capacitor (for use with 220V blower)
3	318230	1	Capacitor Bracket (for use with 25 M.F.D. 440V capacitor)
	100632	1	Capacitor Bracket (for use with 6 M.F.D. 440V capacitor)
4	318224	1	Blower Housing Rear Support Bracket
5	130119	1	190° Thermostat
6	122002	1	Lint Drawer Switch
7	154007	2	1/4" Push-On Fastener
8	150301	12	#8-18 x 7/16" Phillips Pan Head TEK Screw
9	150309	5	#10-16 x 1/2" Hex Head TEK Crimptite Screw
10	152013	2	#6-32 Hex Nut
11	152008	4	#10-32 Hex Nut
12	153049	4	13/64" x 7/8" Flat Washer
13	819347	1	Lint Box Top (for models mfd. as of July 29, 2005)
	318568	1	Lint Box Top (for models mfd. prior to July 29, 2005)
14	818803	1	Lint Box Assembly (for models mfd. as of July 29, 2005)
	818484	1	Lint Box Assembly (for models mfd. prior to July 29, 2005)
	185244	1	Right Lint Drawer Rail (for models mfd. as of July 29, 2005)
	185243	1	Left Lint Drawer Rail (for models mfd. as of July 29, 2005)
	180354	2	Lint Drawer Rail (for models mfd. prior to July 29, 2005)
15	818100	1	120V Blower Assembly (refer to Blower Assembly on page 29)
	818147	1	240V Blower Assembly (refer to Blower Assembly on page 29)
16	153024	4	#10 Split Lock Washer
17	117607	2	1/4" x 3/8" Sponge Tape
18	117615	1	1/8" x 3/8" Sponge Tape
19	117615	2	1/8" x 3/8" Sponge Tape
20	318406	1	Capacitor Plate (120V blower assembly Only) (for models mfd. prior to December 10, 2003)
21	102004	1	Compact Door Magnet (for models mfd. as of September 24, 2003)
22	318179	1	Exhaust Tube

Electric Oven Assembly



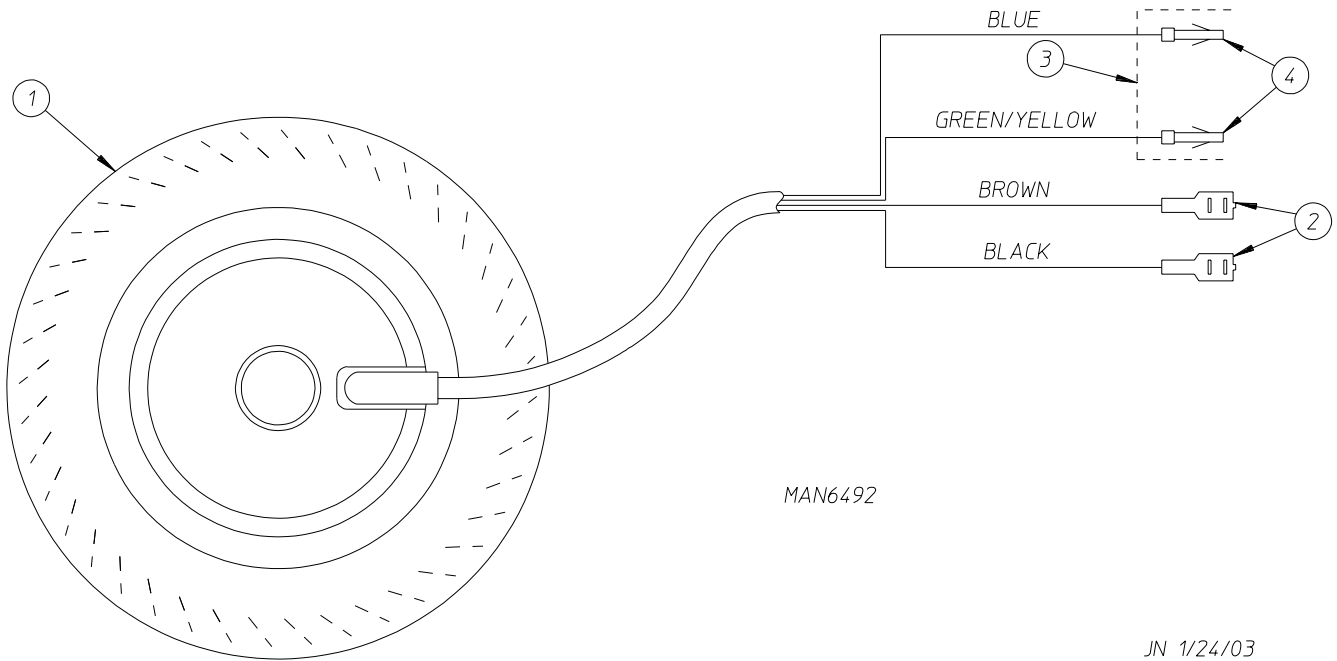
<u>Illus. No.</u>	<u>Part No.</u>	<u>Qty.</u>	<u>Description</u>
1	131368	1	25A 25V Contactor with Lugs
2	153022	4	#10 Flat Washer
3	153024	4	#10 Split Lock Washer
4	318543	1	Electric Oven Housing
5	120086	1	Element Bank
6	130400	1	290° Thermostat
7	150300	10	#10-16 x 1/2" Hex Washer Screw
8	152008	7	#10-32 Hex Nut
9	818525	1	Electric Bracket
10	824081	1	R.C. Network
11	130123	1	Thermadisc Fuse (for models mfd. as of January 5, 2004)



MG 9/24/03

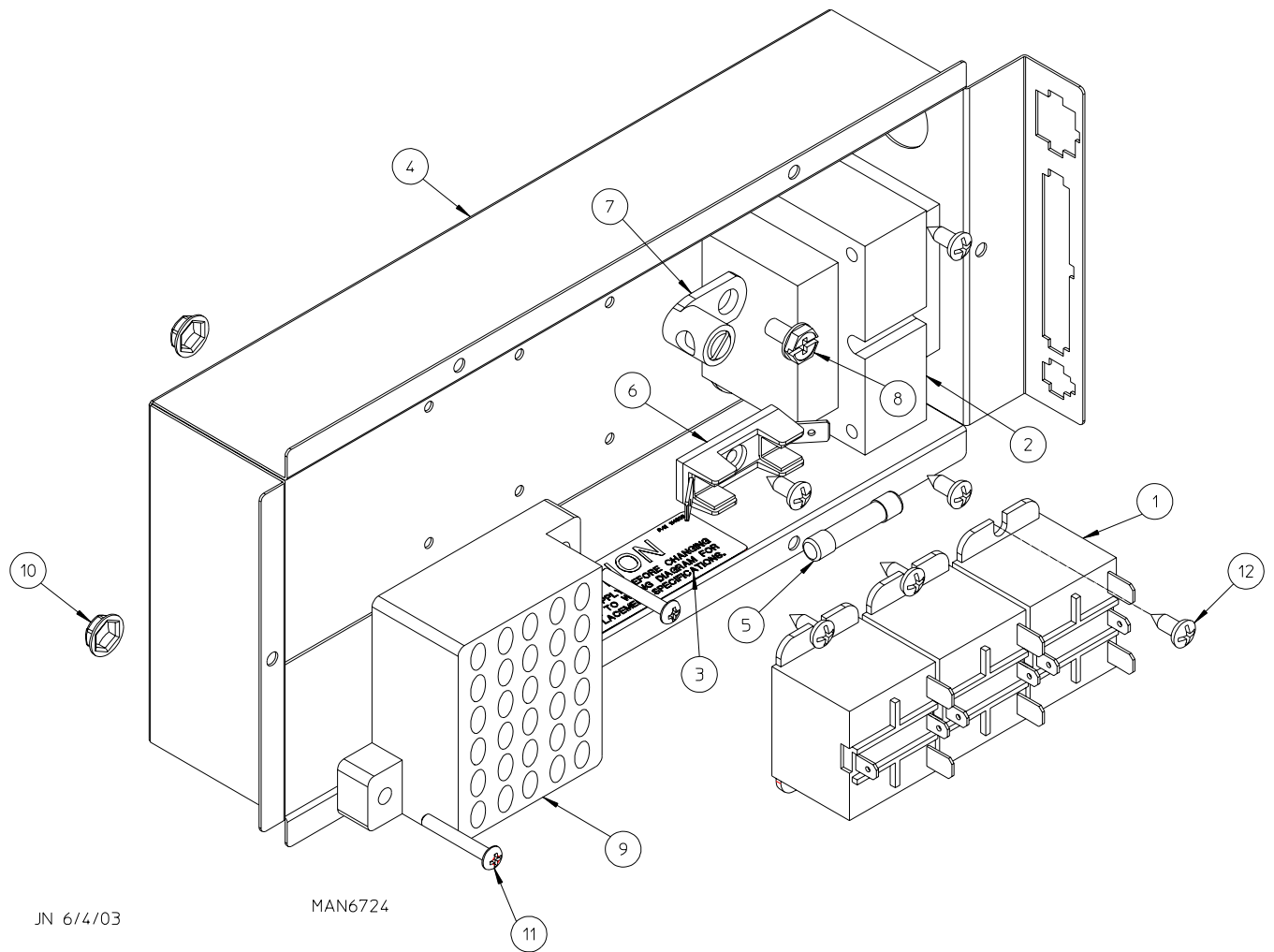
Illus. No.	Part No.	Qty.	Description
1	883826	1	Motorized Impellor 120V ONLY (refer to Blower Motor Assembly on page 30)
	883827	1	Motorized Impellor 240V ONLY (refer to Blower Motor Assembly on page 30)
2	318446	1	Blower Housing Mount
3	150300	8	#10-16 x 1/2" Hex Washer Screw
4	154338	5	M4 x 6mm Phillips Head Slotted Machine Screw
5	152008	4	#10-32 Hex Nut
6	153024	4	#10 Lock Washer
7	153012	5	#8 Star Washer
8	818099	1	Blower Housing
9	318179	1	Exhaust Tube
-	818100	1	Blower Assembly Complete 120V (includes illus. nos. 1 through 9)
-	818147	1	Blower Assembly Complete 240V (includes illus. nos. 1 through 9)

Blower Motor Assembly



<u>Illus. No.</u>	<u>Part No.</u>	<u>Qty.</u>	<u>Description</u>
1	883826	1	120V Motorized Impellor with Plug (includes illus. nos. 1 through 4)
	883827	1	240V Motorized Impellor with Plug (includes illus. nos. 1 through 4)
2	121000	2	1/4" x 0.032 Uninsulated Terminal
3	122622	1	4-Pin Plug
4	122705	2	Socket Terminal

Front Electrical Panel Assembly

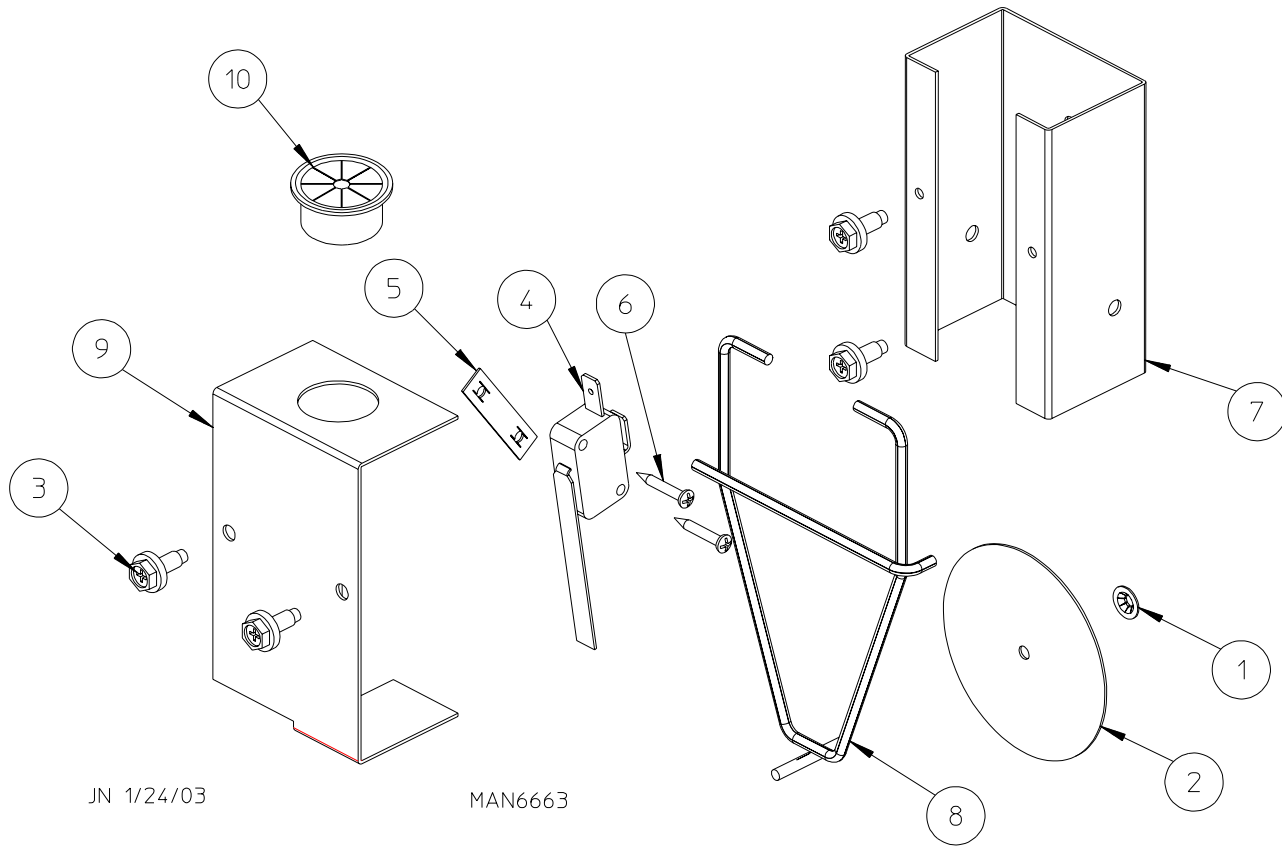


JN 6/4/03

MAN6724

Illus. No.	Part No.	Qty.	Description
1	131932	3	24V SPST Relay
	818347	1	Front Electrical Panel Complete (120V) (includes illus. nos. 1 through 12)
	818348	1	Front Electrical Panel Complete (240V) (includes illus. nos. 1 through 12)
2	818284	1	Universal Transformer Assembly (120V or 240V)
3	114506	1	Fuse Rating Label
4	318620	1	Electric Box
5	136057	1	1/2-amp (Slo-Blo) Fuse
6	136008	1	Fuse Holder
7	121010	1	Ground Lug
8	120910	1	#10-32 Green Ground Screw
9	120731	1	30-Position Terminal Block
10	151000	2	#6-32 Pal Nut
11	150006	2	#6-32 x 1" Phillips Round Head Machine Screw
12	150301	9	#8-18 x 7/16" Phillips Pan Head TEK Screw

Sail Switch Assembly

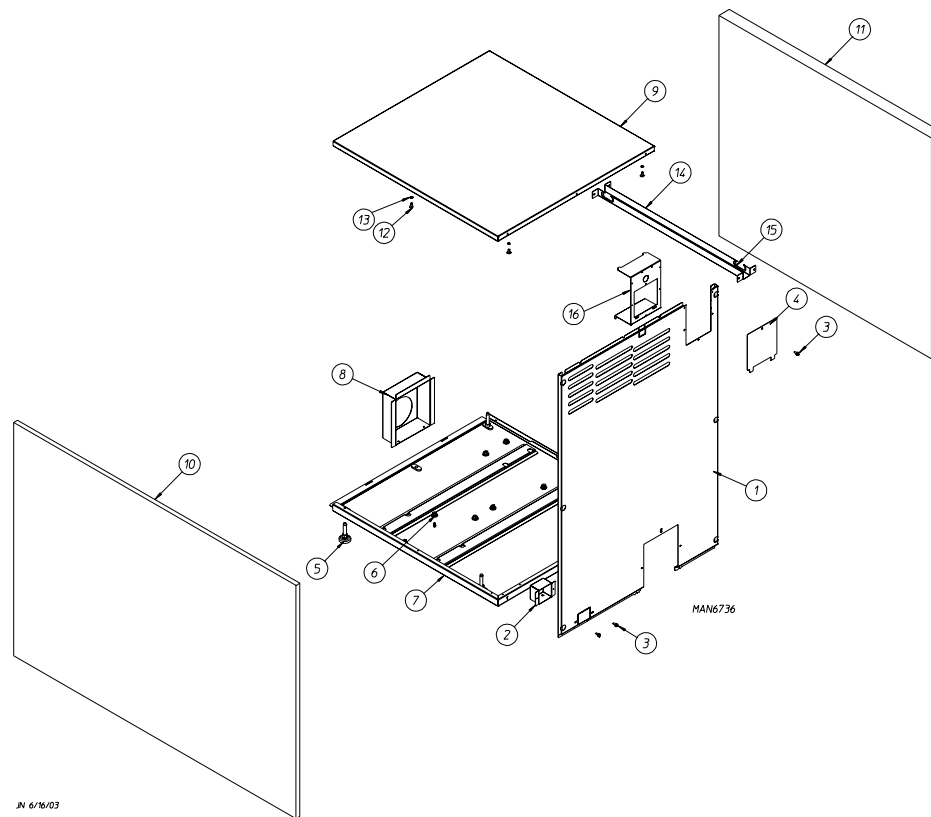


JN 1/24/03

MAN6663

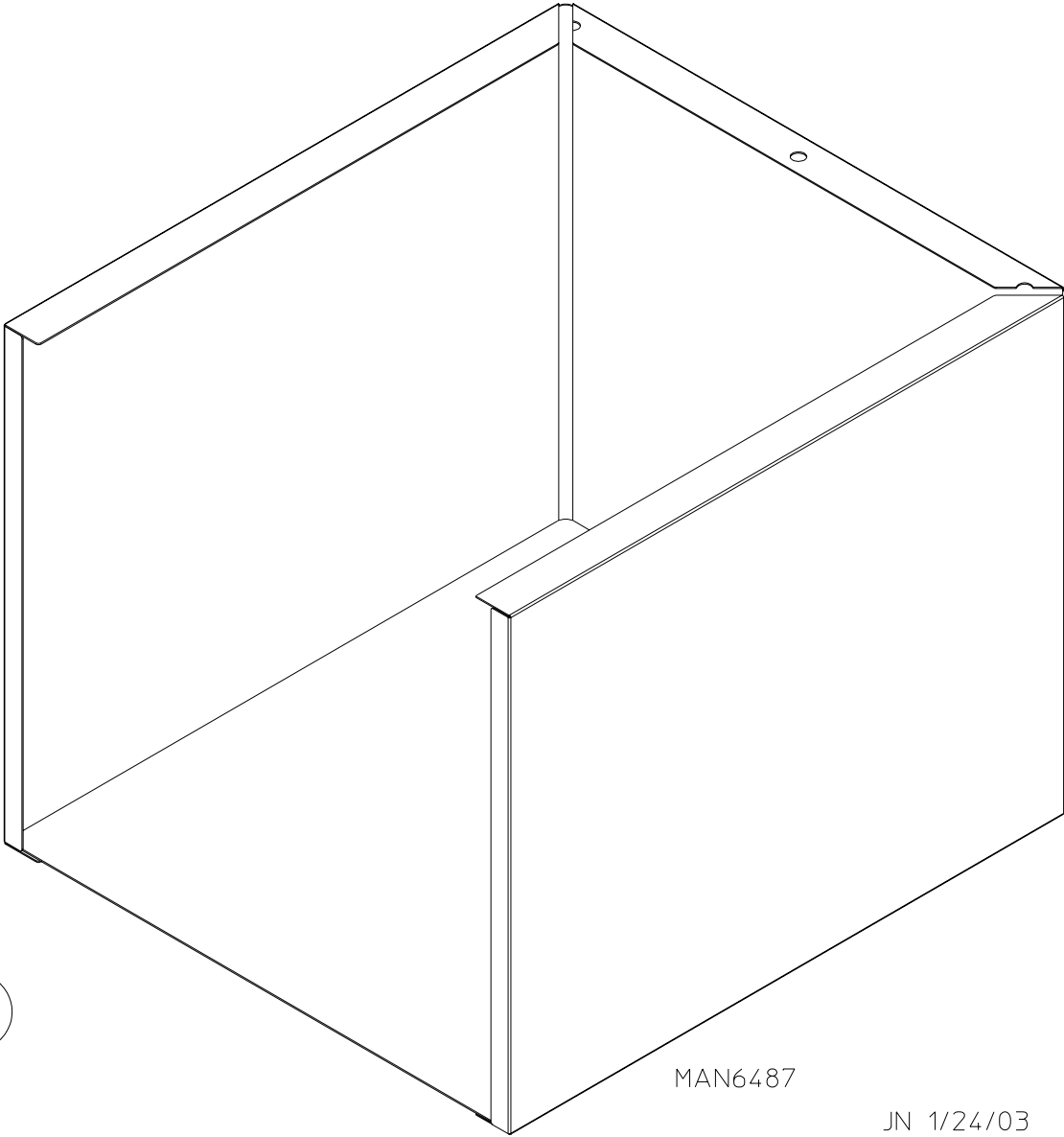
<u>Illus. No.</u>	<u>Part No.</u>	<u>Qty.</u>	<u>Description</u>
1	154002	1	1/8" Push-On Fastener
2	318490	1	Sail Switch Damper (flat) 3-1/4" Diameter (for models mfd. as of January 21, 2004)
	332689	1	Sail Switch Damper (flat) 2-1/2" Diameter (for models mfd. prior to January 21, 2004)
3	150309	4	#10-16 x 1/2" Hex Head TEK Crimptite Screw
4	122200	1	Sail Switch
5	154004	1	Twin Speed Nut
6	150303	2	#4 x 3/4" Pan Head Machine Screw
7	318237	1	Sail Switch Box
8	105500	1	Sail Switch Rod Assembly
9	818113	1	Sail Switch Box Cover and Bracket
	818570	1	Sail Switch Assembly Complete (includes illus. nos. 1 through 9) (for models mfd. as of January 21, 2004)
	818114	1	Sail Switch Assembly Complete (for models mfd. prior to January 21, 2004) (includes illus. nos. 1 through 9)
10	121400	1	Universal Bushing

Base / Top / Sides / Back Guard Assemblies



<u>Illus. No.</u>	<u>Part No.</u>	<u>Qty.</u>	<u>Description</u>
1	318643	1	Back Guard
2	318634	1	Gas Pipe Pocket
3	150300	32	#10-16 x 1/2" Hex Washer TEK Screw
4	318629	1	Junction Box Cover
5	103501	4	Leveling Leg
6	152014	8	1/4-20 Free Spin Wash Nut
7	818564	1	Hooked Base (for models mfd. as of January 31, 2004)
	818479	1	Slide Base (for models mfd. prior to January 31, 2004)
8	318632	1	Exhaust Support Bracket
9	818491	1	Top (includes illus. nos. 12 and 13)
10	818565	1	Right Side Panel Assembly (for models mfd. as of January 31, 2004)
	818496	1	Right Side Panel Assembly (for models mfd. prior to January 31, 2004)
11	818566	1	Left Side Panel Assembly (for models mfd. as of January 31, 2004)
	818495	1	Left Side Panel Assembly (for models mfd. prior to January 31, 2004)
12	154210	4	5/32" x 3/16" Pop Rivet
13	318143	4	Top Catch Spacer
14	318640	1	Wire Track
15	156001	2	Caterpillar Grommet
16	318695	1	Junction Box (for models mfd. as of August 21, 2003)
	318628	1	Junction Box (for models mfd. prior to August 21, 2003)

Pedestal Box Option



<u>Illus. No.</u>	<u>Part No.</u>	<u>Qty.</u>	<u>Description</u>
1	818169	1	Dryer Pedestal

<u>Part No.</u>	<u>Description</u>
112014	"Warning – High Voltage" Label
112046	Computer Ground
112057	24 Volt Controls
112075	1/2" Diameter Ground Symbol
112093	Motor Rotation (red)
112280	"Clean Lint Screen" Label
112704	Phase 7.3.2 Program Location Summary Label
114001	"Caution – Combustible Lint" Label
114004	Rotating Parts
114005	"Danger – Hot" Label
114006	"Warning – Fire Hazards" Label
114007	"Danger – High Voltage" Label
114008	"Warning – Fumes" Label
114094	Mop Head Rag Crescent
114506	"Caution – Fuse" Label
114562	Phase 7.5 Program Location Summary Label
120903	Crimp-On Wire Nut
121499	5-1/2" Harness Tie
122804	Manometer (hydro gauge) for Measuring Gas Pressure
404519	Black Touch-Up Paint

