



SUPER® STRIPPER
Operating Manual

Read before use and keep safe

Table of Contents

1.0	Technical Data	Page 2
2.0	Safety	Page 2
3.0	Safety instructions	Page 2
4.0	Maintenance	Page 4
5.0	Use	Page 5
6.0	Information about various floorings	Page 6
7.0	Troubleshooting	Page 6
8.0	Spare Parts	Page 7
9.0	Schematic	Page 9
10.0	Blade Selection	Page 10



1.0 Technical data/technical description

Power supply	110-120V AC
Power consumption	2200W, 20A with current limiter
Number of strokes	5000 strokes/min
Sound pressure level	93 dB(A)
Sound energy level	106 dB(A)
Hand/Arm-Vibration	6 m/s ²
Weight	220 lbs
Comes with:	Super® Stripper, 2 blades, ear & eye protection and tool kit.

2.0 Safety

The Sinclair Super® Stripper is state of the art designed and meets all standard safety requirements.

3.0 Safety Instructions

Disconnect the power supply before any maintenance is carried out.

Use only recommended blades and make sure the blade is sharp before starting.

Maintenance should be undertaken only by qualified personnel. Use only genuine *Sinclair* parts.

Transport

Always remove the blade before transporting the machine.

CAUTION!!! Always wear ear and eye protectors! CAUTION!!!

Using this machine without ear and eye protectors may jeopardize or harm your health. It may harm especially your ears and increase the risk of an accident.

*** PLEASE READ DETAILED SAFETY INSTRUCTIONS ON COLORED SHEET BEFORE USING MACHINE!**

3.1 Introduction

This operating manual should be used to receive the maximum benefit from your Super® Stripper. Following these instructions will both extend the life of your machine and reduce repair costs.

Please make sure any user of the machine is familiar with these instructions before work begins.

3.2 Danger while working with the machine

The Super® Stripper is designed to the highest technical standards.
Incorrect use can be dangerous!
Use this machine only:

- **As instructed in this operating manual.**
- **With the machine in perfect working order.**

Disturbances that could impair safety have to be eliminated at once.

3.3 Restriction of use

The Super® Stripper is exclusively for removing bonded floor covering in dry environments. It should not be used for any other purpose. *Sinclair Equipment Company* cannot be held responsible for any damage or loss caused by incorrect use.

Correct use also includes:

- To take care of all directions from the operating manual and
- The execution of maintenance and service.

4.0 Maintenance

The Super® Stripper is virtually maintenance free. The guide shaft castings require lubrication from time to time. (After approx. 1650 sq. feet). Initially the machine is fully lubricated and should not require any additional lubrication for the first 5000 square feet. The zirc fittings are located on each side (see diagram).

1) To Grease the gearbox on its right side, remove left wheel and bottom cover. Spin axel/gearbox to expose zirc fitting. (See Diagram 2) Put 2 to 3 pumps to gearbox every 50 to 75 hours. The used grease will flush dirt out of the machine. Replacement lubrication should be a Lithium based chassis type lube (i.e. auto grease gun pack).



Diagram 1

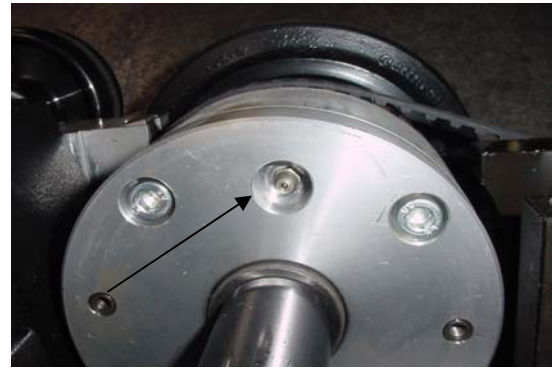


Diagram 2

The used grease will flush dirt out of the machine. Replacement lubrication should be a Lithium based chassis type lube (i.e. auto grease gun pack).

CAUTION !! Press maximum 3 to 4 times with the grease gun. Never press too much grease into the machine. Otherwise the mechanism will be blocked.

Changing the blade

Disconnect the power supply and put on the blade protection before changing the blade. Use work gloves for your own safety.

- Tip the machine
- Put on the blade protection (enclosed in the tool set)

Warning! Very sharp blade! You may cause injury without using the blade protection!

- Secure the tipped machine from tilting over
- Clean and loosen screws of the blade mounting

Attention! Set the wrench at a position opposite to the blade to avoid injury.

- replace the blade

Make sure that the sharp bevel of the blade always shows upwards and the blade is fitting in exactly the position of the old one.

Changing the driving wheels

Remove the lynch-pins and pull the wheels from the axle. Do not loose the wheel key under any circumstances.

5.0 Use

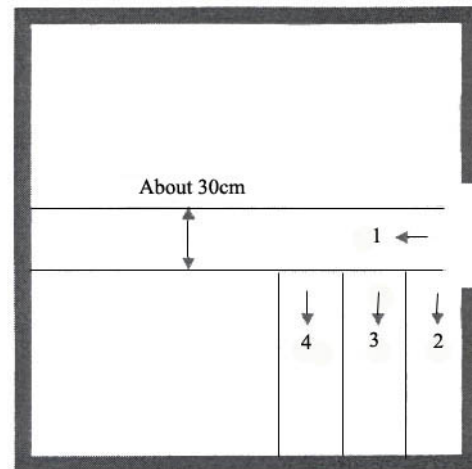
The Super® Stripper removes bonded, flexible floor covering in strips. This procedure corresponds with the customary method of using a hand floor scraper. The stripper works with a steel blade at a very high frequency, minimizing vibration and noise.

The Super® Stripper is self propelled. The motor actuates both the blade and the machine movement. The blade drive starts as soon as the machine is switched on.

Starting

The Super® Stripper is equipped with an operating switch located at the top of the handle. **This is a safety switch, which must be held down to engage the Super® Stripper.** There is a current limiting protective device which causes a two second delay to full power on start.

Before starting work, cut the floor covering into strips of about 30cm (11 inches). You cannot work faster if you cut wider strips. To begin, cut one strip crosswise. Then lift the flooring slightly in order to get the blade underneath it. We recommend to cut the first strip at right angles to the main working direction. By doing so, access to the adjacent strips is made easier. Cut the strips smaller if the floor covering is bonded very securely, e.g. with an epoxy adhesive.



The blades are sharpened by the floor pavement. Therefore the blade has to be changed only if it is twisted or becomes worn.

The driving wheels are subject to wear. They have to be changed after approximately 16mm (0.6 inch) of the surface has been worn away. Otherwise the working angle of the striking apparatus will not be correct especially critical with cork or foam backed carpets.

6.0 Information about various floorings

CV-floorings, PVC-floorings and carpets without foam backing

Cut strips of approx. 30 cm (12 inch) width. If the flooring is bonded very tight, cut strips smaller. The machine should remove the flooring without slipping wheels.

Carpets with foam backing

A sharp blade is essential in order to ensure the floor covering is removed together with the foam backing. Remove floorings across the width, particularly if you have any uneven sub-floor.

Tiles

Use a blade of the same width as the tiles and use a new blade. Tiles about size 30 x 30cm (12 x 12 inches) have to be cut into half. If the sub-floor is uneven, use smaller blades.

In all cases, check from time to time to ensure the blade is still sharp. If the blade is not sharp or any distortion has occurred, replace it immediately.

7.0 Trouble shooting

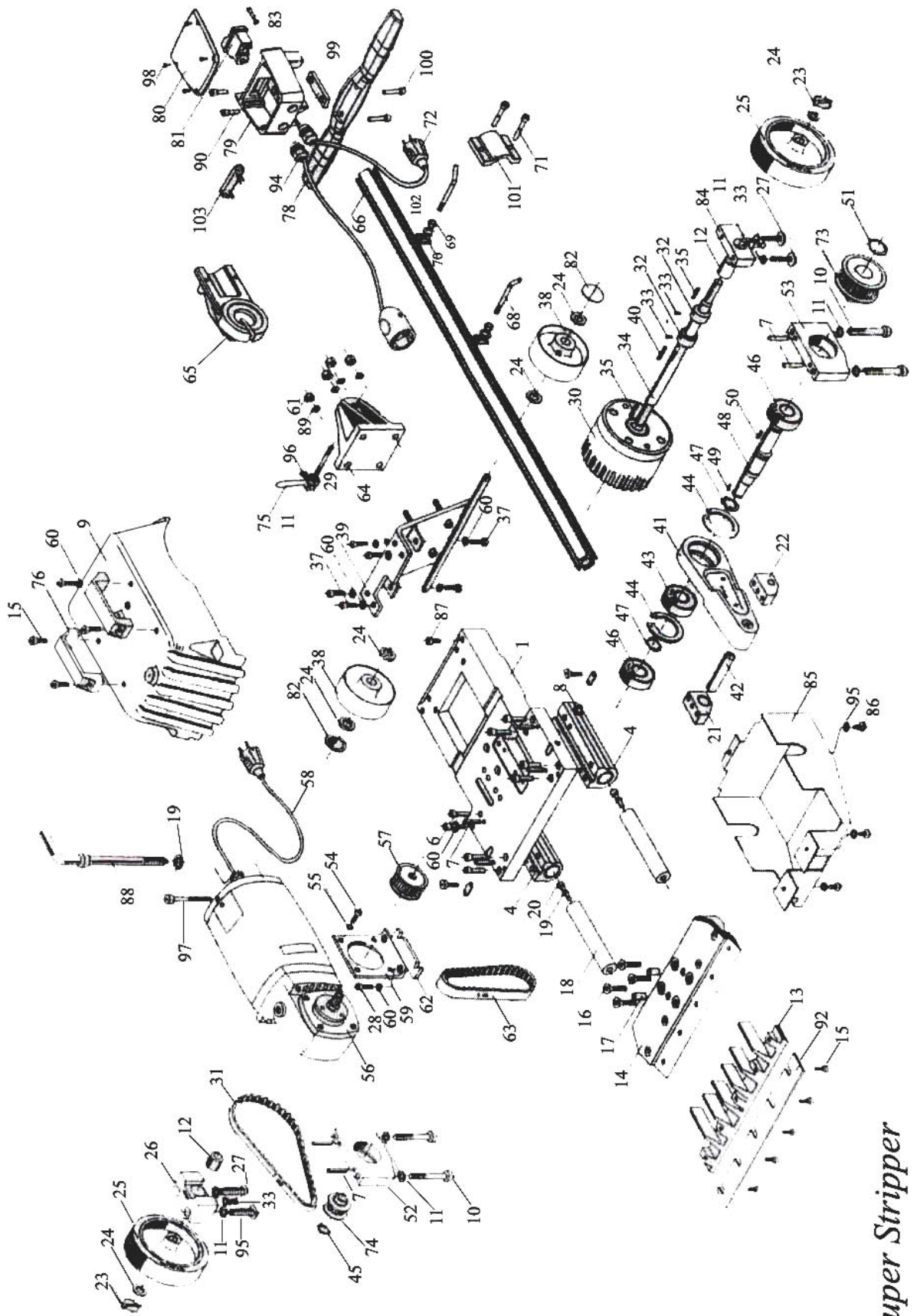
Trouble	Eventual Cause	Elimination
Machine does not start	-Power supply disconnected -Blown fuse -Defective cable -Defective plug	Have machine repaired by a qualified electrician, resp. change parts.
Undue force necessary to strip the flooring	Blade is blunt	Change blades
Excessive vibration	Expendable parts are worn out	Return machine for service and/or repair

8.0 Spare Parts

Super Stripper

Pos #	Pieces	Description	Part #
1	1	Chasis	S019700
4	2	Piston Block	T016228
6	10	Screw M 8x30	T014736
7	8	Cylindrical pin 8x40	T014876
8	2	Lubricating nipple	T014914
9	1	Hood	S014657
10	4	Screw M 10x70	T014742
11	9	Safety washer 10 mm	T014861
12	2	Bushing 20x26x30	T014910
13	1	Blade holder	S014655
14	1	Striking Foot	S014660
15	19	Screw M 8x25	T014734
16	4	Countersink screw M 10x25	T014763
17	2	Tension pin 10x20	T014890
18	2	Piston Rod	T015132
19	3	Washer M 12	T014830
20	2	Screw soc head M 12x30	T014744
21	2	Connecting Rod Bearing	T015417
23	2	Wheel pin	T014888
24	6	Washer, 16mm	T014831
25	2	Drive Wheel	T015135
26	1	Gear mounting right	T015031
27	4	Screw M 10x45	T014741
28	2	Screw M 8x30	T014736
29	1	Pin screw M 10x60	T014788
30	1	Gear block	T015140
31	1	Drive belt 210 L050	T014938
34	1	Drive shaft 88	S014663
35	2	Nut key 5x5x32	T014902
38	2	Black transport wheel	T014954
39	1	Axle wheel	S014664
40	1	Nut key 6x6x32	T014904
41	1	Connecting rod 88	S014662
43	1	Small bearing 6206	T014710
44	2	Circlip I62	T014856
45	1	Circlip A17	T014850
46	2	Ball Bearing 6305	T014712
47	2	Circlip A30	T014853
48	1	Excenter Shaft	S014661
49	1	Nut key 4x4x20	T014901
50	1	Shaft key 6x6x25	T014903
51	1	Circlip A25	T014852
52	1	Bearing block, right	T017079
53	1	Bearing block, left	T017079
54	4	Screw m 5x25	T014722
55	4	Safety Ring 5mm	T014858
56	1	Motor, 110V	T015056
58	1	Motor power cord	T014973

59	1	Motor bracket	T016860
60	24	Safety washer 8mm	D014860
61	6	Elastic stop nut M8	D014816
63	1	Drive belt 187 L 100	T014937
64	1	Handle Bracket	T015378
65	1	Handle Angle Brace	T015051
66	1	Handle 88	T016075
67	1	Electrical short cord	T014974
68	2	Cable Clip	T015427
69	2	Nut	T014810
70	2	Square nut	T017605
71	2	Cyl Screw 8x45	T014739
72	1	Power cord w/plug	T014971
73	1	Belt pulley ZZ 24 - large	T015155
74	1	Belt pulley ZZ 12 - small	T015156
75	1	Locknut M 10	T014820
76	2	Green weight handle	S014915
78	1	Foam grip handle	T074850190A
79	1	Switch Box Housing Large	T015430
80	1	Switch cover	T015428
81	1	On/Off switch (neu)	T021501
82	2	Split pin	T014881
83	1	Indicator Light	T014984
84	1	Gear mounting block, left	T015036
85	1	Bottom plate/cover	S014656
86	5	Screw M 6x12	T014799
87	4	Cylindrical screw M 8x10	T00911400R
88	1	Bolt for hood M12	S014658
92	1	Replacement Blade	
93	1	Motor cover (neu)	T015130
94	1	Screw M 8x25	T014992
95	6	Safety washer M6	D014859
97	1	Cyl. Screw M 5x90 Neu	T014724
98	4	Screw M 4x12	D015210
100	2	Cylindrical screw M 8x40	T014736
101	1	Clamping profile	T014845
102	2	Washer M8/125	T014828
		Without Drawing	
		Grip with chain	T015161
		Carbon brush for motor 110V	T02 576 8500
		Gear box bearing seal	T025781400
		Tool Kit	T014999



Super Stripper

TURBO, EXTRO, SUPER, BRAVO, DURO & ECO STRIPPER

SUGGESTED BLADE SELECTION

BRAVO/DURO/ECO STRIPPER

#10-4906 8”Rigid. Our standard blade for removal of vinyl, carpet, adhesive, etc. Bevel edge of blade should be up for concrete and down for wood sub-surfaces. Precutting of carpet and vinyl needed.

#10-4904 8”Flexible. Same as above, yet for uneven concrete surfaces and some soft foam back carpet.

#10-4907T 8”Tile Blade. For use on VAT and VCT tile. Prevents tile from jamming in between blade and blade holder. A must for tile removal to protect blade holder.

#10-4909 8”Razor Blade Attachment. An adapter to secure razor blades for removal of adhesives, paints and thin films. Inexpensive and an excellent choice for complete clean up after floorcovering removal.

#10-4903 8”X 5”Rigid. Ideal for hard to reach areas such as toe kicks, under radiators, etc. Also used for clean up of small areas of parquet, ceramic, etc.

#10-4906D 8”X 2.5”Rigid Self Dicing. For use on carpet, rubber or vinyl. A real time saver, on pre-cutting necessary since blade will cut strips with knife edged sides.

TURBO/EXTRO/SUPER STRIPPER

**Super Stripper uses 12” Blades Only*

#10-4801D 14”Self-Dicing Blade. For use on carpet, rubber or vinyl. A real time saver, on pre-cutting necessary since blade will cut strips with knife edged sides.

#10-4651T 12”Tile Blade. For use on VAT and VCT tile. Prevents tile from jamming in between blade and blade holder. A must for tile removal to protect blade holder.

#10-4807 14”X 5”Ceramic/Parquet Blade. Ideal for removal for ceramic tile, marble, parquet, and other wood floors. Precutting needed for plank floors.

#10-4809 Special Ceramic/Parquet Blade. This ¼” thick heavy duty blade is designed especially for the ceramic tile and hardwood/parquet removal applications. The 14” wide blade extends out nearly 4” and is designed at a specific angle to work more efficiently in cutting and lifting of thick materials. Best suited for the long run, constant use in tile/wood applications for extended life and performance.

#10-4802 14”Rigid, #10-4652 12”Rigid. The standard blade for carpet, vinyl or adhesive removal, pre-cutting of the floor is needed.

#10-4804 6”Rigid, #10-4803 8”Rigid. Use these blades for difficult removal like, epoxy, rubber floors, sport surfaces, etc. Always position these blades to far left hand side of machine.

NOTE: All jobs can vary in difficulty of removal. Whatever blade you are using it may be necessary to take a smaller bite in removal so it is less stressful on the operator as well as the machine. If you have any questions on blade selection or choice of machine, please do not hesitate to call Sinclair Equipment Company or your nearest distributor

STANDARD WARRANTY

SINCLAIR EQUIPMENT COMPANY'S tools are warranted to be free of defects in workmanship and materials for a period of one year from the date of original purchase. Should any trouble develop during this one year period, return the complete tool, freight prepaid, to SINCLAIR'S authorized Service Center. If inspection shows the trouble is caused by defective workmanship or materials, SINCLAIR EQUIPMENT COMPANY will repair, or, at its option, replace without charge.

- This warranty does not apply to malfunctions caused by damage, unreasonable use, faulty repairs made by others, or failure to provide recommended maintenance.
- The warranty is void if the product is altered by the original consumer purchaser, or if it is used in a manner not recommended by the manufacturer.
- The warranties do not cover consequential damages or transportation charges incurred with the replacement or repair of SINCLAIR EQUIPMENT COMPANY products.
- Not responsible for lost job or down time.

In no event shall SINCLAIR be liable for any indirect, incidental, or consequential damages from the sale or use of the product. This disclaimer applies both during and after the term of this warranty.

SINCLAIR EQUIPMENT COMPANY disclaims liability for any implied warranties, including implied warranties of "merchantability" and "fitness for a specific purpose", after the one year term of this warranty.

This warranty gives you specific legal rights, and you may have other rights which vary from state to state. Should you have any questions, contact SINCLAIR EQUIPMENT COMPANY at (530) 626-9386.

To obtain warranty service, deliver or send the complete tool, prepaid, to SINCLAIR EQUIPMENT COMPANY. Be sure to include the following information:

- Nature of failure;
- Name and address of distributor where tool was purchased;
- Application of tool when rendered defective; and
- Proof of purchase.

To obtain individual repair parts, contact SINCLAIR EQUIPMENT COMPANY with the following information:

- Tool model number;
- Item part number; and
- Description of part.

