



steamMOP™

USER'S GUIDE

1867 SERIES – 220/240V

3 Safety Instructions

4 Product view

5 Assembly Instructions

6-8 Features / Operations

8-9 Routine Maintenance

10 Troubleshooting

11 Consumer Services

11 Replacement Parts

12 Warranty



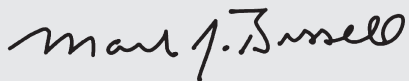
Thanks for buying a BISSELL Steam Mop

We're glad you purchased a BISSELL Steam Mop. Everything we know about floor care went into the design and construction of this complete, high-tech home cleaning system.

Your Steam Mop is well made, and we back it with a limited one-year warranty. We also stand behind it with a knowledgeable, dedicated Consumer Services Department, so, should you ever have a problem, you'll receive fast, considerate assistance.

My great-grandfather invented the floor sweeper in 1876. Today, BISSELL is a global leader in the design, manufacture, and service of high quality homecare products like your Steam Mop.

Thanks again, from all of us at BISSELL.



Mark J. Bissell
President and Chief Executive Officer

IMPORTANT SAFETY INSTRUCTIONS

When using an electrical appliance, basic precautions should be observed, including the following:

READ ALL INSTRUCTIONS BEFORE USING YOUR UPRIGHT DEEP CLEANER.

Always connect to a properly Earthed Outlet. Unplug from outlet when not in use and before conducting maintenance or troubleshooting.

⚠ WARNING: To reduce the risk of fire, electric shock, or injury:

- Do not direct steam at people, animals, or electrical outlets
- Use indoors only
- Do not immerse
- Do not leave machine when it is plugged in
- Do not service machine when it is plugged in
- If the supply cord is damaged, it must be replaced by an authorized Service Centre in order to avoid a hazard
- Do not use machine if it has been dropped, damaged, left outdoors or dropped into water
- Do not expose to rain, store indoors
- Do not pull or carry by cord, use cord as a handle, close door on cord, pull cord around sharp corners or edges, run appliance over cord, or expose cord to heated surfaces
- Do not carry the appliance while in use
- Do not unplug by pulling on cord. Unplug by grasping plug not the cord
- Do not handle plug or appliance with wet hands
- Do not put any object into appliance openings, use with blocked opening, or restrict air flow
- Do not expose hair, loose clothing, fingers or body parts to openings or moving parts
- Do not pick up hot or burning objects
- Do not pick up flammable or combustible materials (lighter fluid, petrol, kerosene, etc.) or use in the presence of explosive liquids or vapour
- Do not use appliance in an enclosed space filled with vapours given off by oil base paint, paint thinner, some moth proofing substances, flammable dust, or other explosive or toxic vapours

- Do not pick up toxic material (chlorine bleach, ammonia, drain cleaner, petrol, etc.)
- Do not modify the 3-pin Earthed plug
- Do not allow to be used as a toy
- Do not use for any purpose other than described in this User's Guide
- Use only manufacturer's recommended attachments
- Use only cleaning products formulated by BISSELL for use in this appliance
- Keep openings free of dust, lint, hair, etc.
- Keep appliance on a level surface
- Turn off all controls before unplugging
- Be extra careful when cleaning stairs
- Pay close attention when working around children
- Not intended for use by young children or infirm persons without supervision
- Young children should be supervised to ensure that they do not play with the appliance

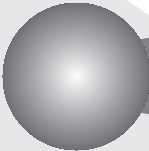
SAVE THESE INSTRUCTIONS.
THIS MODEL IS FOR HOUSEHOLD USE ONLY.

⚠ WARNING: This appliance must be earthed.

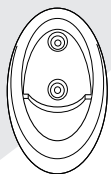
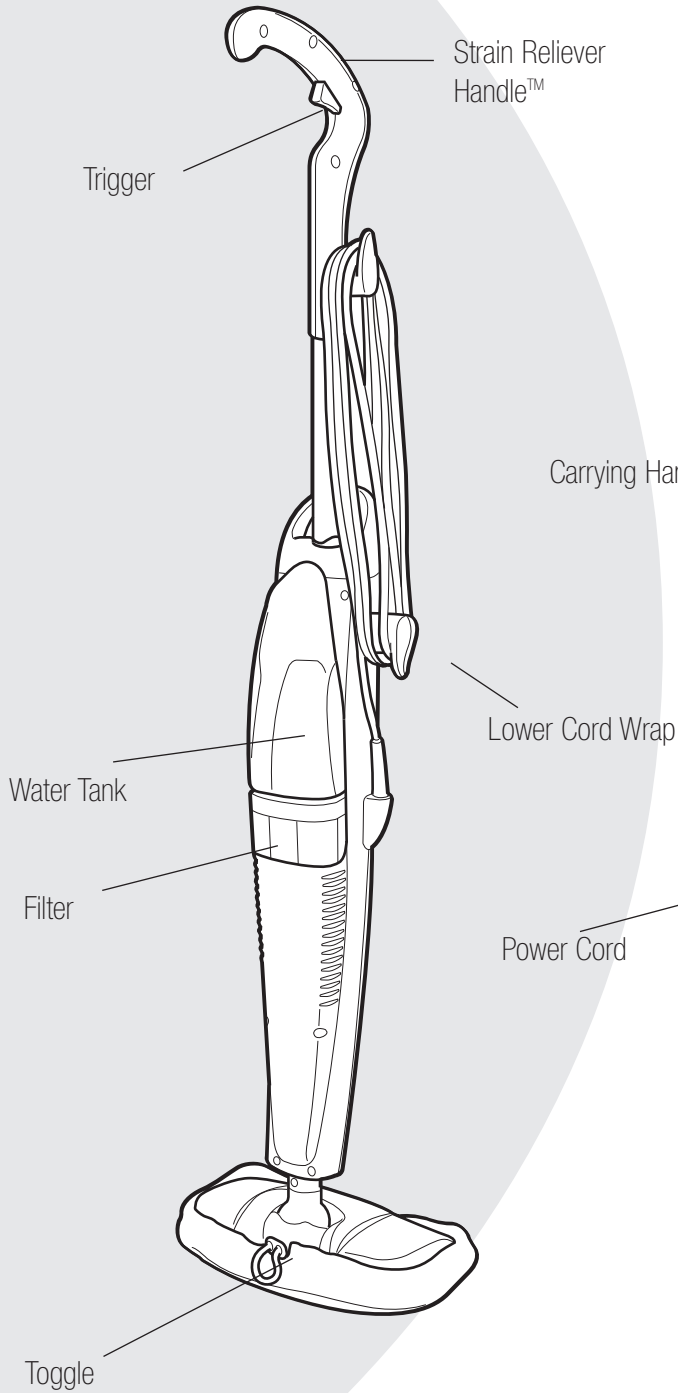
IMPORTANT FOR OPERATION ON
A 220/240 VOLT A.C. 50/60 Hz POWER
SUPPLY ONLY.

FOR RESIDENTS OF THE UNITED KINGDOM ONLY

If your appliance is fitted with a nonrewireable BS 1363 plug it must not be used unless a 13 amp (ASTA approved to BS 1362) fuse is fitted in the carrier contained in the plug. Spares may be obtained from your BISSELL supplier. If for any reason the plug is cut off, it must be disposed of, as it is an electric shock hazard should it be inserted into a 13 amp socket.



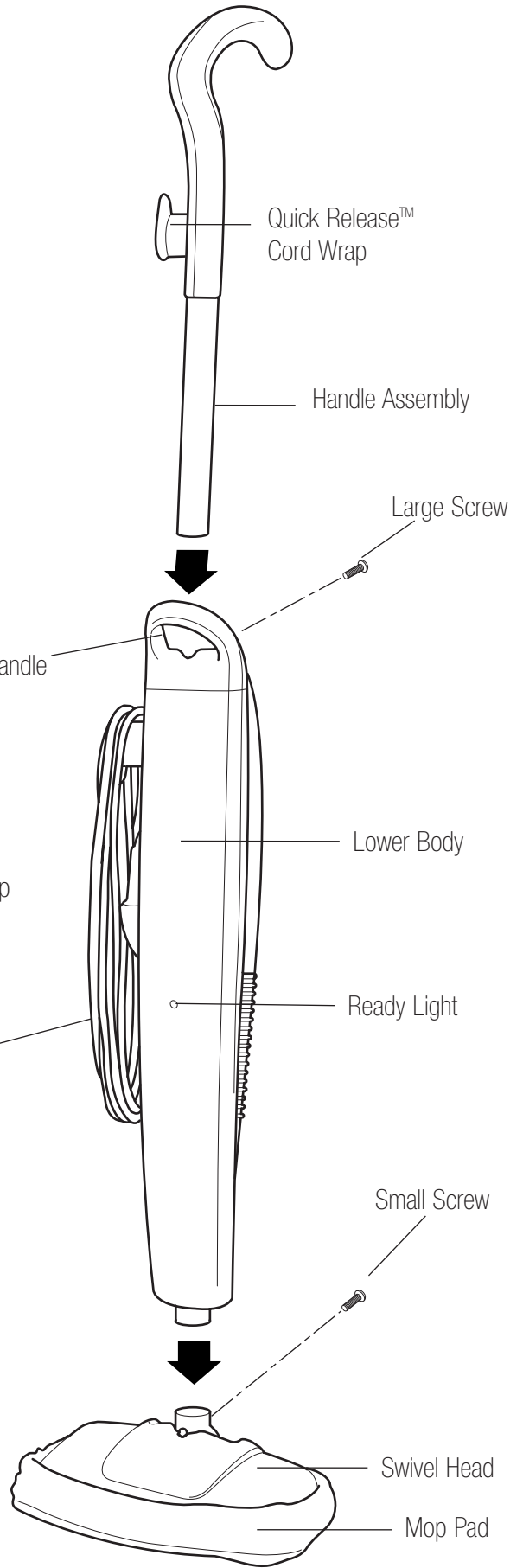
Product View



Storage Hook



Clean Out Pin




How To Use This Guide

This User's Guide has been designed to help you get the utmost satisfaction from your BISSELL Steam Mop bare floor steam cleaner. You'll find assembly and operating instructions, safety precautions, maintenance and troubleshooting instructions. Please read this User's Guide thoroughly before assembling your Steam Mop.



Pay particular attention to the parts diagram, assembly instructions, and part names. Locate and organize all parts before assembly. Familiarize yourself with the parts and where they fit. Following this User's Guide will greatly enhance your ability to get the best performance from your BISSELL Steam Mop for many years.

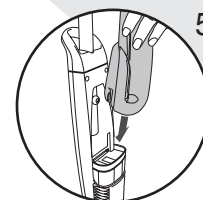
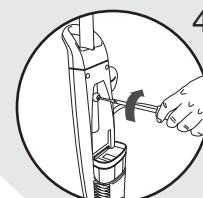
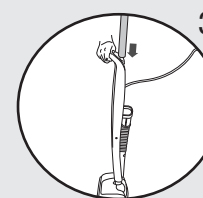
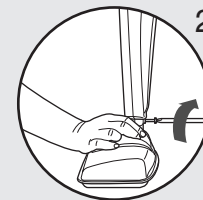
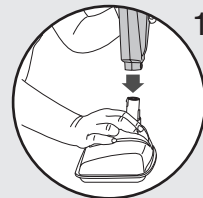
How To Assemble Your Steam Mop

Your Steam Mop assembles quickly and easily. The only tool you will need to assemble your cleaner is a Phillips Head  Screwdriver.

Your Steam Mop is packaged with the following items:

Handle Assembly	1 Large Phillips Head Screw
Lower Body with Filter	1 Small Phillips Head Screw
Swivel Head	2 Mop Pads
Water Tank	Storage Hook with 2 Screws
	Clean Out Pin

- 1.** Attach Swivel Head.
- 2.** Secure Swivel Head with small Phillips Head  Screw. Tighten until secure.
- 3.** Slide Handle Assembly down into Lower Body until it will go no further.
- 4.** Secure the handle by placing the Large Phillips Head  Screw through the screw opening in the Lower Body and into the rear of the Handle Assembly. Tighten with screwdriver until secure.
- 5.** Slide Water Tank onto Lower Body by lining up vertical glides and gently sliding tank into place.



Steam Mop Product Features

1. Water Tank. The Water Tank is located on the back of the Steam Mop. It can be refilled with water any time during use. Distilled or demineralized water may be used in place of tap water.

Do not use chemicals with your Steam Mop.

2. Water Filter. The Filter removes minerals and other impurities from tap water, preventing water deposits from damaging your Steam Mop. It should be replaced when the bright green grains turn blue. To maximize performance of the Filter, distilled or demineralized water may be used.

3. Ready Light. The Ready Light will glow when tap water has been converted to steam and the Steam Mop is ready to use.

4. Trigger. Press to release steam.

5. Swivel Head. Allows you to clean in tight spaces and under cabinets.

6. Mop Pad. The absorbent terry cloth Mop Pad picks up the dirt loosened by the steam. The Mop Pad is reusable and machine washable.

7. Storage Hook. Mount on a wall for convenient storage in a closet or utility room.

Mounting instructions:

- A.** Choose a mounting location that is over a stud.
- B.** Hold the Storage Hook against the wall with the screw holes at the top of the hook. With a pencil, mark the position of both screw holes.
- C.** Drill 1/8" diameter holes in the center of your pencil marks.
- D.** Place Storage Hook over drilled holes.
- E.** Secure Storage Hook by screwing in place with the provided screws.

8. Clean Out Pin. The Clean Out Pin is used to clear blockages in the Steam Nozzle. To clean the Nozzle, insert the Clean Out Pin into the brass spray tip.

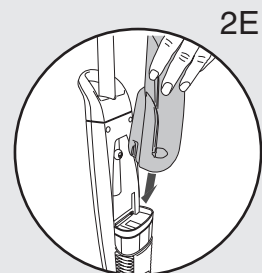
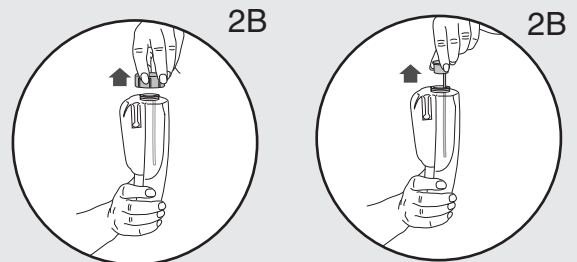
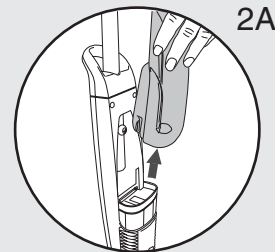
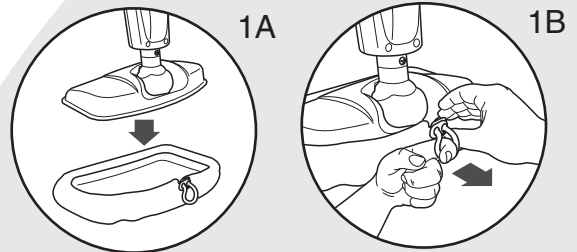
Tip:

Do not attempt to use your Steam Mop without water in the tank.

Operations

Getting Ready

- 1.** Attach Mop Pad
 - A.** Set Swivel Head in Mop Pad.
 - B.** Tighten Mop Pad by pulling on cord while pressing on Toggle.
- 2.** Fill the Water Tank
 - A.** Remove Tank by lifting straight up and away from unit.
 - B.** Unscrew cap at bottom of Water Tank, remove the insert assembly.
 - C.** Fill Water Tank with cool tap water.
 - D.** Replace the insert assembly, replace and tighten cap.
 - E.** Replace Water Tank by lining up vertical guides and gently sliding tank into place.
- 3.** Twist the Quick Release Cord Wrap clockwise to unwrap the Power Cord completely and plug into a 220-240 Volt grounded outlet as described in the Important Safety Instructions on page 3.
- 4.** The Ready Light will illuminate when the Steam Mop is ready for cleaning.



⚠ WARNING:
Never put descaling, alcoholic, or detergent products into the steam cleaner, as this may damage it or make it unsafe for use.

Cleaning Bare Floors

Your Steam Mop is designed to clean bare flooring such as ceramic tile, vinyl, laminate, marble, stone and sealed hard wood floors. Use of your Steam Mop on waxed or some unwaxed floors may result in a diminished glossiness. The Steam Mop is not for use on unsealed wood floors. For best results test in an inconspicuous area or check the care instructions from your flooring manufacturer.

1. Sweep or vacuum floor prior to using.
2. Slowly pass over surface to be cleaned while pressing trigger to emit steam.
3. To sanitize an area of your floor, leave the Steam Mop over that area for a minimum of 15 seconds, but no longer than 20 seconds. For larger areas, overlap Swivel Head placement.
4. When the Steam Mop stops emitting steam, simply remove the Water Tank, refill, and continue cleaning.

Tip:

During first use, it may take several seconds for the Steam Mop to begin steaming. The water needs to flow through the Filter to the heater. This delay will only occur during initial use or when using a new Filter.

Routine Maintenance

When You're Done

1. Unplug Power Cord from outlet.
2. Carefully remove Mop Pad from Swivel Head, as Mop Pad and Lower Assembly will be hot.
3. Any water remaining in the Water Tank should be emptied prior to machine storage.
4. Mop Pad can be machine washed in hot water and tumbled dry.
5. Wrap Power Cord around Quick Release Cord Wrap on side of Steam Mop.
6. Wipe all surfaces of Steam Mop with a soft cloth. Store upright in a protected, dry area or hang by storage hook.

 **CAUTION:**
Upright storage of the Steam Mop with a wet Mop Pad may result in the formation of white marks on your floor. To remove the white marks, clean area with vinegar.

Replacing The Water Filter

If you fill your steam cleaner with normal tap water, it is essential to check the Water Filter and replace it when it is no longer effective. Change the Filter when the bright green grains turn blue. If the Filter is not changed at the appropriate time, calcium deposits will accumulate on the heating element, causing damage or reduced performance. Using distilled or demineralized water will maximize the performance of your Filter.

Replacement Filter

Use only BISSELL Water Filters (218-5600) in your BISSELL Steam Mop steam cleaner. To locate a retailer near you, or to place an order, call us as follows:

For UK inquiries:

Monday - Thursday

9 a.m. — 5 p.m.

Friday

9 a.m. — 4 p.m.

Telephone: 0870-225-0109

For all other inquiries:

Monday - Friday

8 a.m. — 4 p.m.

Telephone: 01-616-453-4451

⚠ WARNING:
To reduce the risk of fire, electric shock or injury, unplug appliance from outlet before servicing.

Reduced Steam Or No Steam.

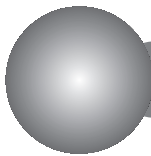
Possible Causes

- 1 Water Tank empty
- 2 Depleted Water Filter
- 3 Blocked Steam Nozzle

Remedies

- 1 Fill Water Tank
- 2 Replace Water Filter
- 3 Remove Swivel Head - pour vinegar through head. Clear Nozzle by inserting the Clean Out Pin into the brass spray tip.

If suggested solution for this or any function of your Steam Mop does not correct the problem, call BISSELL Consumer Services.



BISSELL Consumer Services

If your BISSELL product should require service:

In the UK call BISSELL Consumer Services at the number below and we will give you the location of a BISSELL Authorized Service Center in your area. For all other countries contact your local in country distributor for questions service, or repair.

If you have questions about your warranty or need replacement parts please contact the numbers below.

For UK inquiries:

Monday - Thursday 9 a.m. — 5 p.m.
Friday 9 a.m. — 4 p.m.

BISSELL Homecare (Overseas) Inc.

The Boat Yard
105 Straight Road
Old Windsor
Berkshire, SL4 2SE
United Kingdom
Telephone: 0870-225-0109

For all other inquiries:

Monday - Friday 8 a.m. — 4 p.m.

BISSELL Homecare, Inc.

PO Box 1888
Grand Rapids, MI 49501 USA
Telephone: 01-616-453-4451
Fax: 01-616-453-1383

Or visit the BISSELL website - www.bissell.com

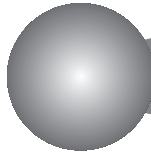
When contacting BISSELL, have model number of unit available.

Please record your Model Number: _____

Please record your Purchase Date: _____

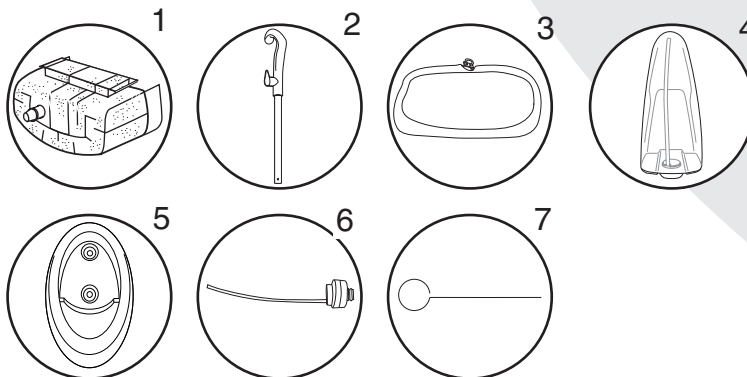
NOTE: Please keep your original sales receipt. It provides proof of date of purchase in the event of a warranty claim. See "About Your Warranty" on page 12 for details.

Please do not return this product to the store.



Replacement Parts

Item	Part No.	Part Name
1	218-5600	Water Filter
2	603-2047	Handle / with screw
3	603-2043	Mop Pads - 2 pack
4	603-2045	Water Tank
5	603-2050	Storage Hook
6	603-2046	Cap and Insert Assembly
7	203-1020	Clean Out Pin



About Your Warranty

This warranty gives you specific legal rights, and you may also have other rights which may vary from country to country. If you need additional instruction regarding this warranty or have questions regarding what it may cover, please contact BISSELL Consumer Services by telephone or regular post as described below, or contact your local in country distributor.

Limited One Year Warranty

Subject to the *EXCEPTIONS AND EXCLUSIONS identified below, upon receipt of the product, BISSELL Homecare, Inc., will replace (with new or remanufactured components), at BISSELL's option, free of charge from the date of purchase by the original purchaser, for one year any defective or malfunctioning part do to manufacturers defect.

This warranty applies to product used for personal, and not commercial or rental service. This warranty does not apply to fans or routine maintenance components such as filters, belts, or brushes. Damage or malfunction caused by negligence, abuse, or use not in accordance with the User's Guide is not covered.

For UK inquiries:

Monday - Thursday 9 a.m. — 5 p.m.
Friday 9 a.m. — 4 p.m.

BISSELL Homecare (Overseas) Inc.

The Boat Yard
105 Straight Road
Old Windsor
Berkshire, SL4 2SE
United Kingdom
Telephone: 0870-225-0109

For all other inquiries:

Monday - Friday 8 a.m. — 4 p.m.

BISSELL Homecare, Inc.

PO Box 1888
Grand Rapids, MI 49501 USA
Telephone: 01-616-453-4451
Fax: 01-616-453-1383

BISSELL HOMECARE, INC. IS NOT LIABLE FOR INCIDENTAL OR CONSEQUENTIAL DAMAGES OF ANY NATURE ASSOCIATED WITH THE USE OF THIS PRODUCT. BISSELL'S LIABILITY WILL NOT EXCEED THE PURCHASE PRICE OF THE PRODUCT.

*EXCEPTIONS AND EXCLUSIONS FROM THE TERMS OF THE LIMITED WARRANTY

THIS WARRANTY IS EXCLUSIVE AND IN LIEU OF ANY OTHER WARRANTIES EITHER ORAL OR WRITTEN. ANY IMPLIED WARRANTIES WHICH MAY ARISE BY OPERATION OF LAW, INCLUDING THE IMPLIED WARRANTIES OF MERCHANTABILITY AND FITNESS FOR A PARTICULAR PURPOSE, ARE LIMITED TO THE ONE YEAR DURATION FROM THE DATE OF PURCHASE AS DESCRIBED ABOVE.



©2003 BISSELL HOMECARE, Inc.
Grand Rapids, Michigan
All rights reserved. Printed in China.
Part Number 603-5531
Rev 10/03

Visit our website at:
www.bissell.com