

# Fisher-Price®

## Safe Embrace® Convertible Car Seat

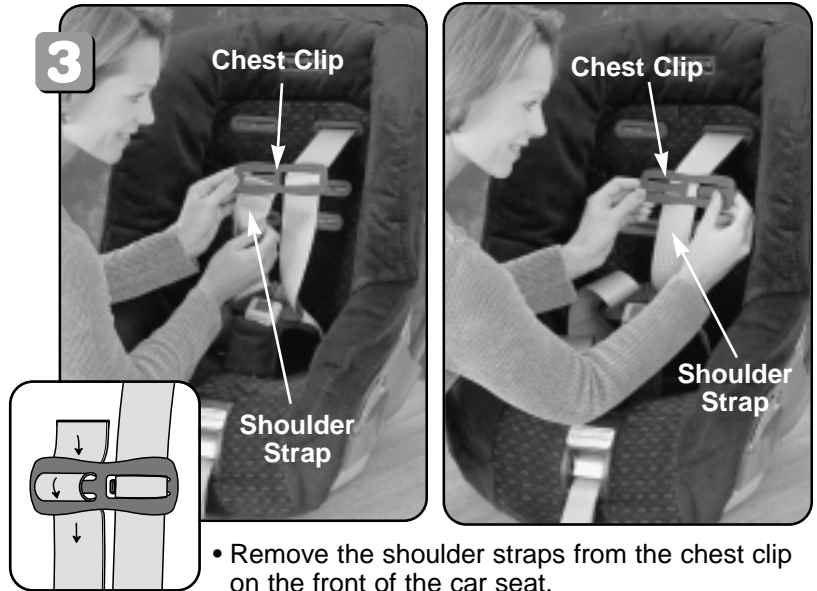
Model Number: 79700, 79702

### Chest Clip Replacement Instructions

#### Remove the Existing Chest Clip

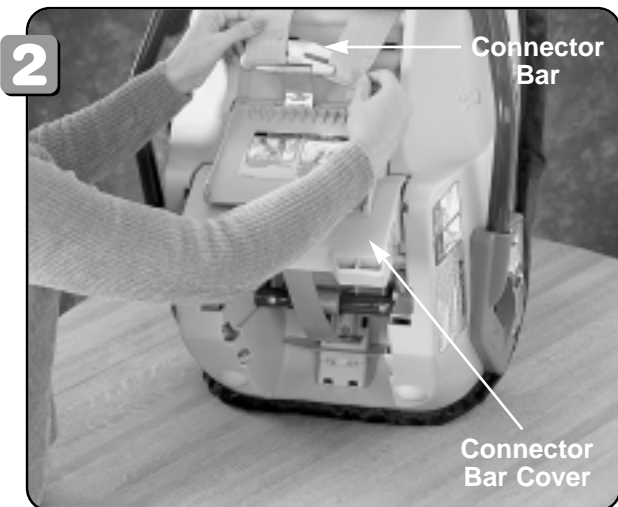


- Lift the harness release lever and pull the shoulder straps out as far as you can on the front of the car seat.

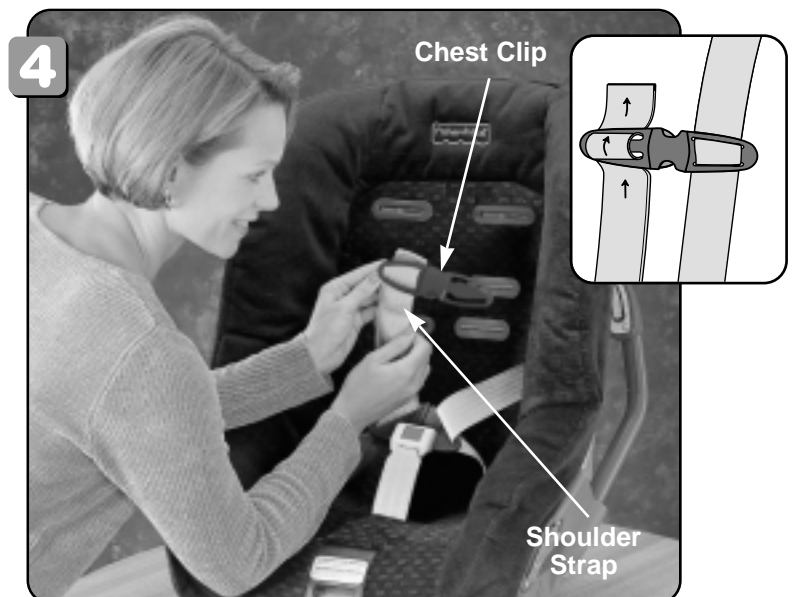


- Remove the shoulder straps from the chest clip on the front of the car seat.

#### Replace with New Chest Clip



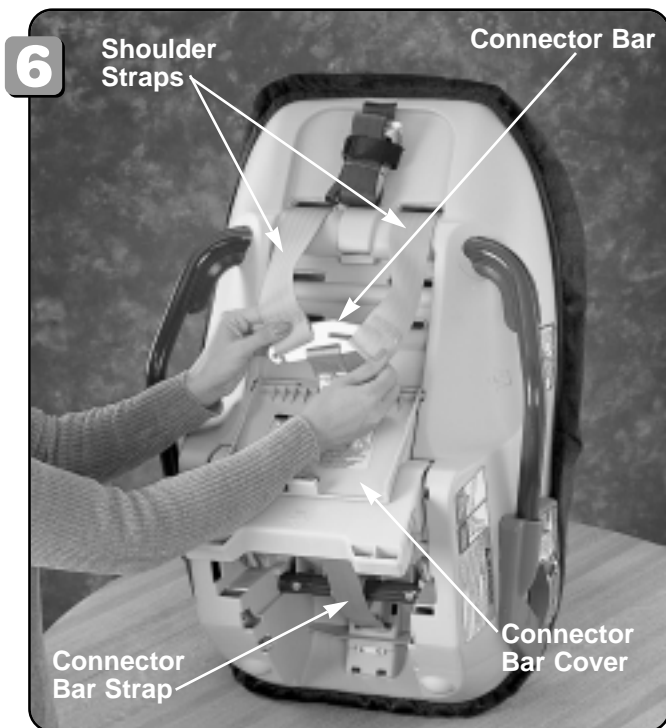
- Open the connector bar cover on the back of the car seat.
- Pull the connector bar up.
- Remove each shoulder strap from each end of the connector bar.



- Position the chest clip pieces so that the buckle and tongue face each other. Fasten the chest clip.
- Thread a shoulder strap through one side of the chest clip, as shown. Make sure the shoulder strap is not twisted.
- Repeat this procedure to thread the other shoulder strap through the other side of the chest clip.



- Re-insert the shoulder straps into the shoulder strap slots.

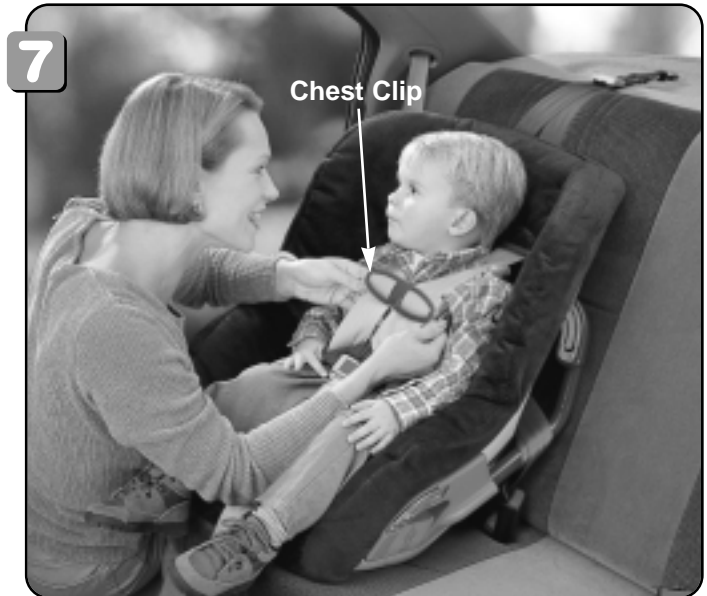


- Pull the connector bar up on the back of the car seat.
- Re-attach the shoulder straps to the connector bar. **Make sure the shoulder straps are not twisted.**
- **Make sure the connector bar strap is not twisted.**
- Close the connector bar cover.

**Hint:** It is easier to close the connector bar cover if you pull the shoulder straps out as far as you can on the front of the car seat.

## Chest Clip Use

**IMPORTANT!** The chest clip is only recommended for toddler forward facing use.



- Buckle the chest clip.



- Position the chest clip so that it is in line with your child's armpits.

**Please refer back to your Safe Embrace® Convertible Car Seat Owner's Manual, which was enclosed with your car seat, for warnings, important information, setup and use instructions. If you have further questions, please call Fisher-Price® Consumer Affairs, toll-free at 1-800-432-KIDS, between 8 AM and 6 PM, Monday through Friday. Hearing-impaired consumers using TTY/TDD equipment, please call 1-800-382-7470.**

Fisher-Price, Inc., a subsidiary of Mattel, Inc., East Aurora, NY 14052 U.S.A.  
©2000 Mattel, Inc. All Rights Reserved. ® and ™ designate U.S. trademarks of Mattel, Inc.