



## Quick Installation Guides

**Remote Monitoring Guide**  
**MYQ-SEE DDNS Setup Guide**  
**iPhone Access Setup Guide**  
**E-mail Notification Setup Guide**

**QT5, QSDT, AND QSD2308/16  
DVRs**

---



# TABLE OF CONTENTS

REMOTE MONITORING GUIDE .....	1
MYQ-SEE DDNS SETUP GUIDE .....	11
IPHONE ACCESS SETUP GUIDE .....	14
EMAIL NOTIFICATION SETUP GUIDE .....	18
CONTACT INFORMATION .....	20

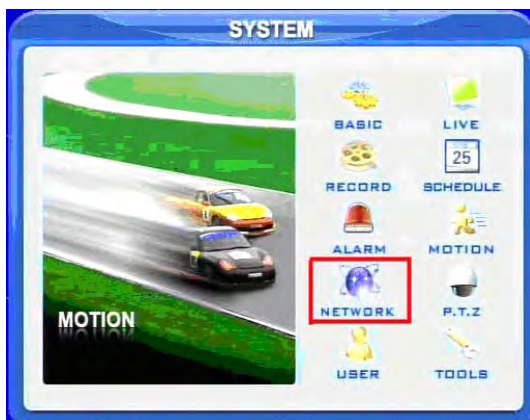


## REMOTE MONITORING GUIDE FOR QT5, QSDT, AND QSD2308/16 DVRS

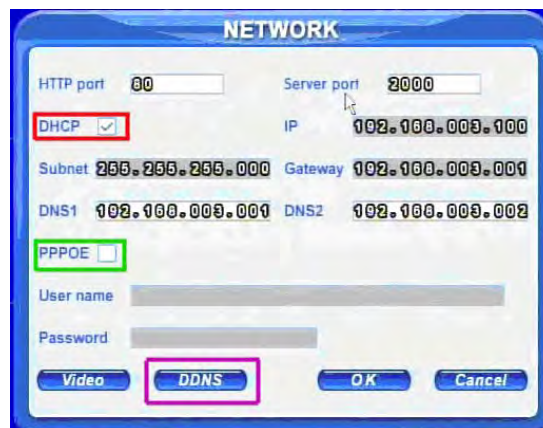
**Accessing the DVR from a computer attached to the same router:** If you are only going to access the DVR from a computer that is attached to the same router as the DVR you only need to setup the information in the NETWORK settings using either the DHCP option or assigning a static IP following the instructions below. Since you are just going from one location to another on the same network port forwarding and knowing the public IP address are not necessary. You would just access the DVR by entering the IP address of the DVR from the NETWORK setup into the Internet Explorer browser window. After you setup the NETWORK settings using DHCP or Static IP instructions skip down to the section: **To access the DVR through Internet Explorer.**

There are 4 ways you can setup the DVR to be accessed remotely; DHCP, Static IP, PPPOE, and DDNS.

**DHCP:** If your router is setup for DHCP, and most of them are by default, you can have the router assign an IP address to the DVR. To do this you push the MENU key on the DVR to get to the system menu (Pic 1), then use the Direction Keys on the DVR to select the NETWORK option and push the ENTER key to display the NETWORK screen shown in Pic 2. Put a checkmark in the DHCP option box (RED box in Pic 2) and then select the OK button, then restart the DVR so the router can find it and assign it an IP address. To find out what IP address the router has assigned to the DVR push the INFO button on the front of the DVR. This is the IP address you will forward port 80 to on the router so you can access the DVR from remote computers. Once the router has assigned an address through DHCP ignore the default IP address, Subnet, and Gateway information that is displayed in the main network window.

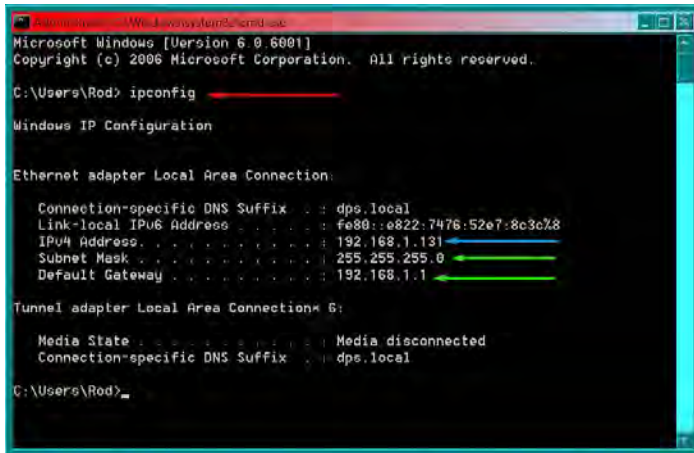


Pic 1

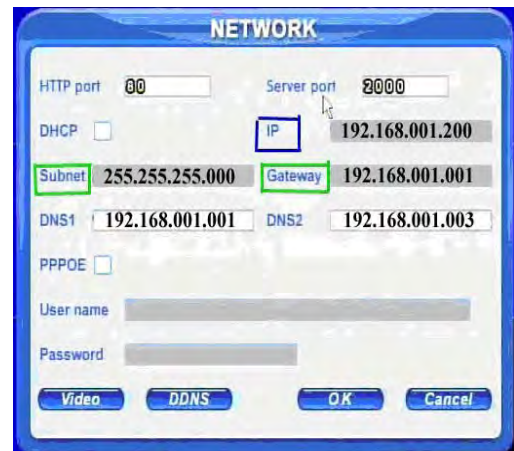


Pic 2

**Static IP:** You will need to setup the network settings on the DVR to match the settings of the router that you attach the DVR to. To get the router settings you would go to the run option on a computer attached to the same router as the DVR and type cmd and hit OK to bring up a command prompt (Pic 3), then type ipconfig at the prompt (RED arrow on Pic 3) to access the router settings. Write down the gateway and subnet mask numbers (GREEN arrows on (Pic 3) so you can copy them into the network settings on the DVR (GREEN boxes on Pic 4). Push the MENU key on the DVR to get to the system menu (Pic 1), then use the Direction Keys on the DVR to select the NETWORK option and push the ENTER key to display the NETWORK screen shown in Pic 4.



Pic 3



Pic 4

For the DVRs IP address you would enter the same first 3 sets of numbers as the gateway and select a fourth set of numbers that is different than any other device attached to the same router. If the IP address of your computer in the ipconfig (BLUE arrow in Pic 3) was a single or two digit number you should be ok with any three digit number, if the computer IP address ends with a number in the 100s then you should go with a 200 number (BLUE box in Pic 4).

**PPPOE:** If you are going to attach the DVR directly to a DSL or Cable modem instead of a router you will need to select the PPPOE option in the NETWORK options. To do this you push the MENU key on the DVR to get to the system menu (Pic 1), then use the Direction Keys on the DVR to select the NETWORK option and push the ENTER key to display the NETWORK screen shown in Pic 2. Put a checkmark in the PPPOE option box (GREEN box in Pic 2) and then select the OK button. You will need to contact your internet service provider to get the User name and Password you need to enter into the spaces under the PPPOE check box.

**DDNS:** You can access the DVR through a static or dynamic IP address; however a dynamic address can change from time to time. How often depends on your service provider. When it changes you need to go to a website such as [www.myipaddress.com](http://www.myipaddress.com) from a computer attached to the same router as the DVR to find out what the new IP address is. There are two solutions to this problem. One would be to get a static IP address from your service provider so that you do not have to be concerned with the address changing. Another solution would be to use a dynamic domain name service to get a domain name that can be linked to your dynamic IP address. We suggest [myq-see.com](http://myq-see.com) or [www.dyndns.com](http://www.dyndns.com) since the DVR is setup to accept account information from these two domain name services. To access the DVR through a dynamic domain name you push the MENU key on the DVR to get to the system menu (Pic 1), then use the Direction Keys on the DVR to select the NETWORK option and push the ENTER key to display the NETWORK screen shown in Pic 2. Select the DDNS button (PURPLE box in Pic 2) and then hit the ENTER key. This will bring up a screen (Pic5) where you can enter the domain name you registered with the domain name service and the user name and password that they assigned you. You also need to enter this information into the appropriate section on your router. You will then be able to access the DVR remotely by entering the domain name into a browser window on a remote computer.

**Note:** You can get more information on setting up a myq-see account in the attached quick start guide.

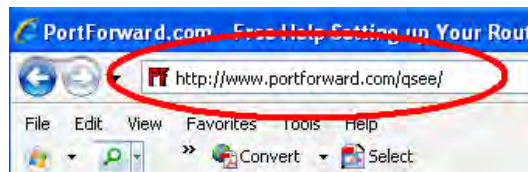


Pic 5

## PORT FORWARDING

To access the DVR from a remote computer you need to forward ports 80 and 2000 from the router the DVR is attached to, to the IP address of the DVR.

1. Connect your DVR to the Router and power on DVR
2. Configure your DVR and Set up port forwarding on your router
  - a. Go to [www.portforward.com/qsee](http://www.portforward.com/qsee)



- b. Choose your DVR or Series (QT, QSDT, QR, QS etc) from the list provided



Welcome Q-See Customers.

PortForward.com is proud to offer help setting up port forwarding for your Q-See DVR. We have guides customized to support your DVR

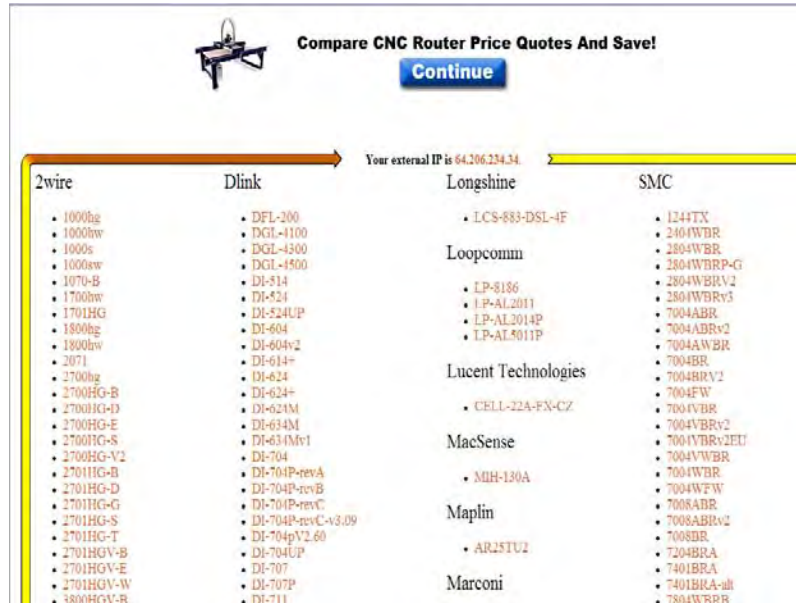
After choosing your DVR from the list below, you will be taken to a list of routers. Pick your router from the list, or the closest match, and be specific to both your DVR and your router.

Please choose your DVR from the list below

QSee QSC26404  
QSee QSC26416  
QSee QSD2216  
QSee QSD2304L  
QSee QSD2316L  
QSee QSD42208  
QSee QSD42908  
QSee QSD6204  
QSee QSD6209  
QSee QSD9004  
QSee QSDF8204  
QSee QSPDVR04  
QSee QSPDVR16  
QSee QSTD2308L  
QSee QSTD2408  
QSee QSTD2416  
QSee QSTD5304  
QSee QSU2DVR04

Routers can be tough to configure. Our [Help](#) and [FAQ](#) page gives general tips and definitions. These can help if you can't [connect](#) to your r some of the terms on this page. If you do not know exactly what you are doing or are having problems, [Start Here](#).

c. Select the make and model of your router from the list



d. Click on the 'Click here to skip this advertisement...' link in the upper right corner of the screen.

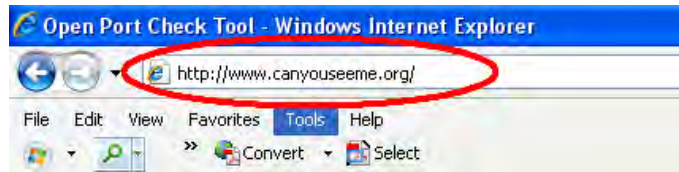
**Notice:** When you go to the [www.portforward.com](http://www.portforward.com) website you will see an ad for a software program that will setup port forwarding for you. You do not need to buy this software. Above the ad there is a link to skip the ad, if you click on the link it will take you to the instructions which are free. You can purchase the software if you want to, but you do not need to pay to get the port forwarding instructions.



e. Follow the instruction on the website (The top set of instructions are done on the DVR. The bottom set of instructions are done on the router)

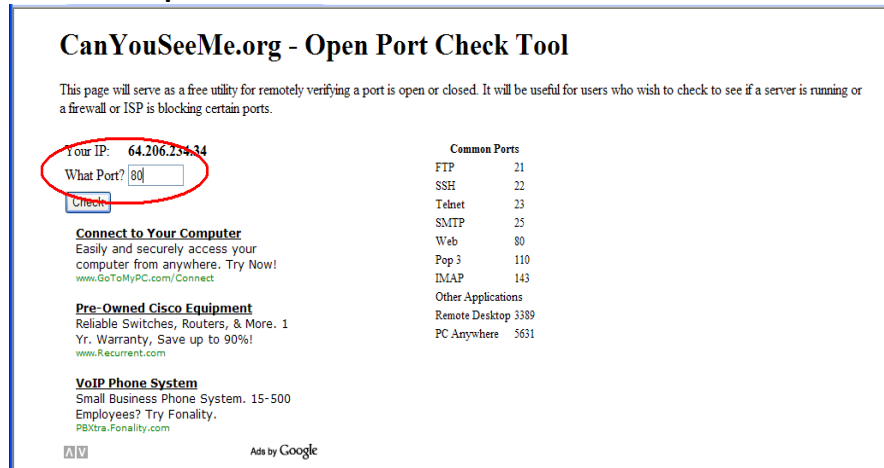
f. Verify the ports are open and traffic is allowed

a. Go to [www.canyouseeme.org](http://www.canyouseeme.org)



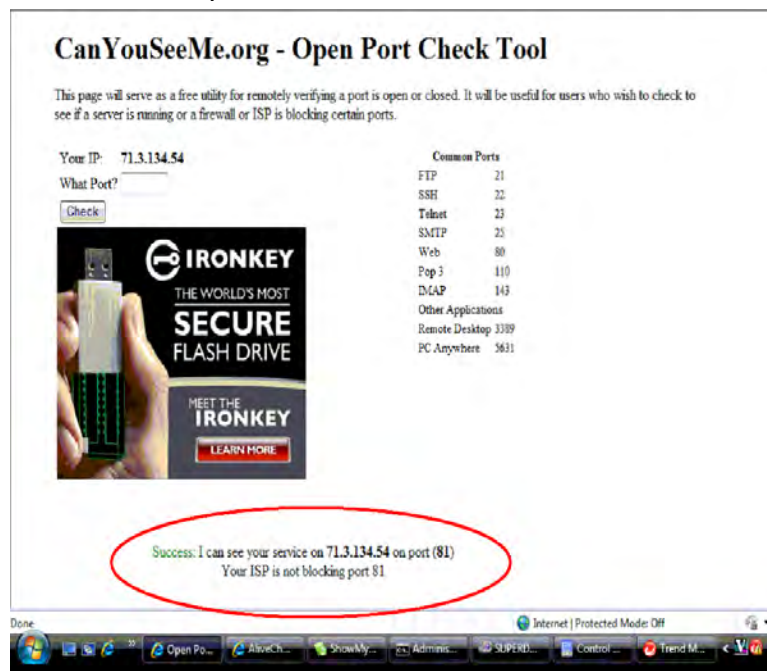
b. Type the port number that your DVR requires in the box.(See picture)

The default ports are 80 and 2000.



c. Verify that the port(s) is open.

- i. If the port is open, you will see the following message: "Success. I can see your service..."



- ii. Go to the section below: **To access the DVR through Internet Explorer**
- iii. Otherwise, if the ports are not open, you will get the following message: **“Error: I could not see your service on 64.206.234.34 on port (80) - Reason: Connection refused”**. If you get this error, call your Internet Service Provider (ISP) and ask them to unblock those ports for you.

### CanYouSeeMe.org - Open Port Check Tool

This page will serve as a free utility for remotely verifying a port is open or closed. It will be useful for users who wish to check to see if a firewall or ISP is blocking certain ports.

Your IP: **64.206.234.34**

What Port?

**T1 Internet Access**  
Full T1 w/ Free Hardware & Install.  
99.99% Uptime & 100% Port Speed!  
[Speakeasy.net/T1-Internet-Access](#)

**Connect to Your Computer**  
Easily and securely access your computer from anywhere. Try Now!  
[www.GoToMyPC.com/Connect](#)

**Remote Desktop Control**  
Easily Control any Remote Desktop.  
Free Trial, No Installation!  
[www.TeamViewer.com](#)

**Common Ports**

FTP	21
SSH	22
Telnet	23
SMTP	25
Web	80
Pop 3	110
IMAP	143
Other Applications	
Remote Desktop	3389
PC Anywhere	5631

Error: I could not see your service on 64.206.234.34 on port (80)  
 Reason: Connection refused

- iv. After your ISP unblocks those ports for you, repeat steps i and ii.

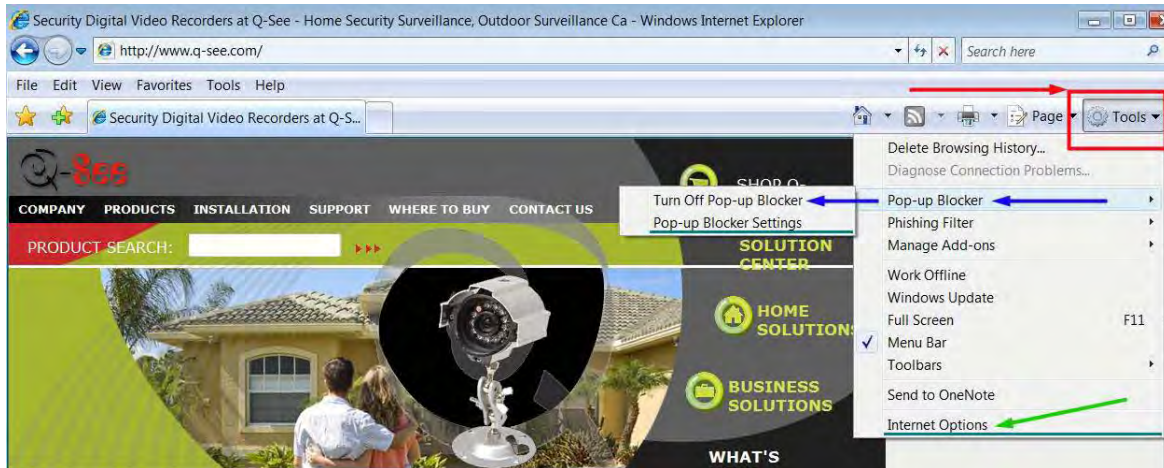
When you access the DVR from a remote computer you also need to use a different address in the Internet Explorer browser window. Instead of entering the IP address of the DVR you need to enter the public IP address of the router the DVR is attached to. You can get this address by going to [www.myipaddress.com](http://www.myipaddress.com) from a computer that is attached to the same router as the DVR. This website will display the box in Pic 8 below that shows the IP address you need to use. It will be in the space where the below example shows 76.254.183.54.



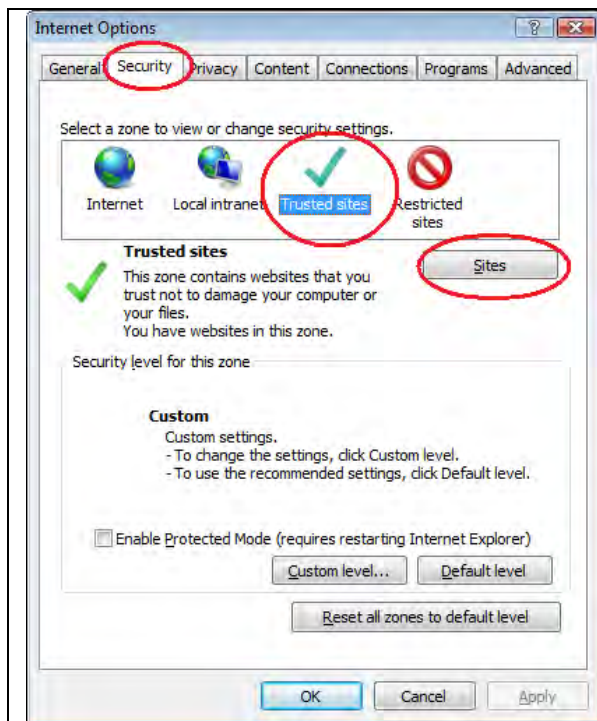
**Pic 8**



**To access the DVR through Internet Explorer:** once you have setup the network settings on the DVR to match the settings of your router and forwarded the ports needed by the DVR (for remote access over the internet), you need to modify your browser controls. You need to allow Pop-ups. To do so go to the Internet Explorer tool bar and select the "tools" option (RED box in Pic 9), then select the "Pop up Blocker" option and select "Turn Off Pop-up Blocker" (BLUE arrows in Pic 9). You will also need to enable Active X controls. To do so go to the Internet Explorer tool bar and select the "tools" option, then "Internet Options"(GREEN arrow in Pic 9).

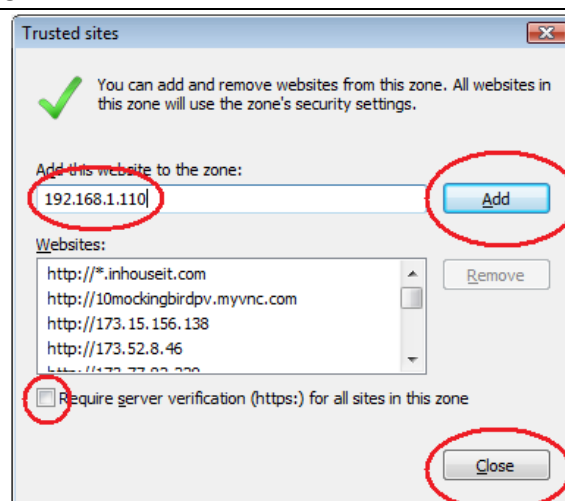


**Pic 9**



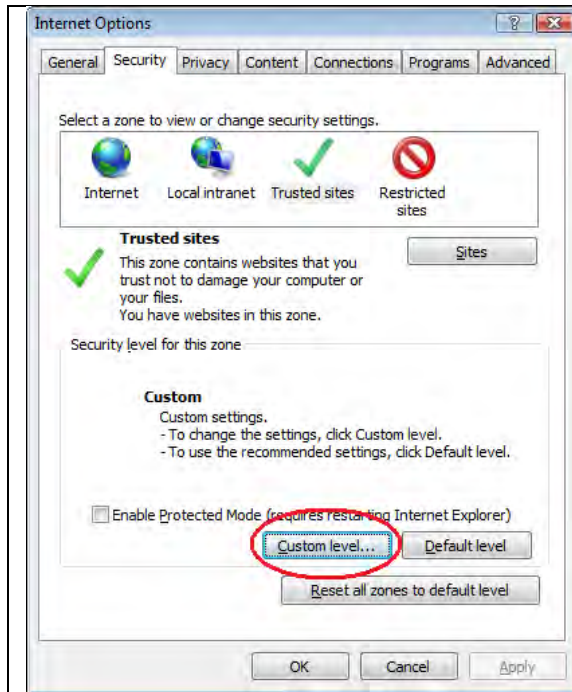
**Pic 10**

Click on Security Tab. Click on Trusted Sites.  
Click on Sites button.



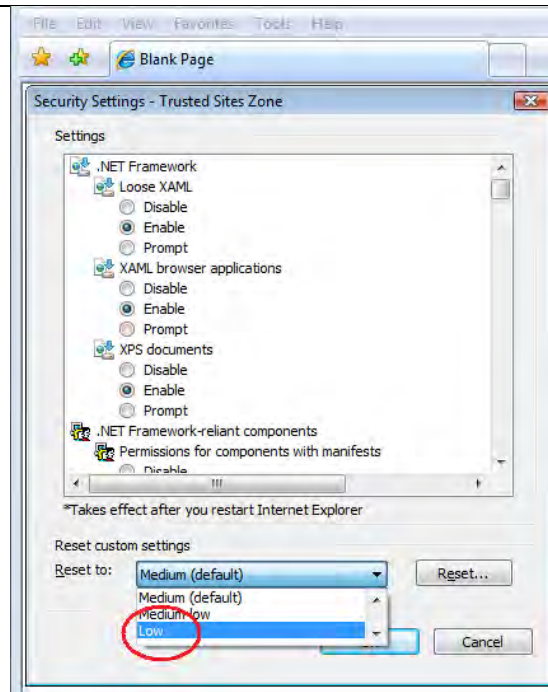
**Pic 11**

Uncheck the box for Require Server verification. Put the IP address of the DVR or WAN IP address in the Add this websites to the zone box and click on Add button. Click on Close.



Click on Custom Level

**Pic 12**



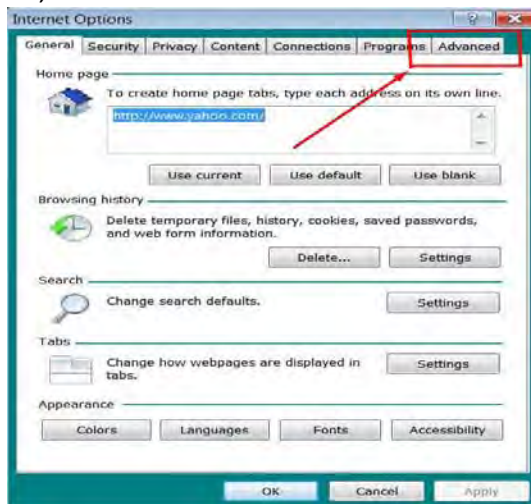
On "Reset to" pull down menu, select "LOW" then click on "RESET" button.

Click 'Yes' when asked: 'Are you sure you want to change the setting for this zone?'

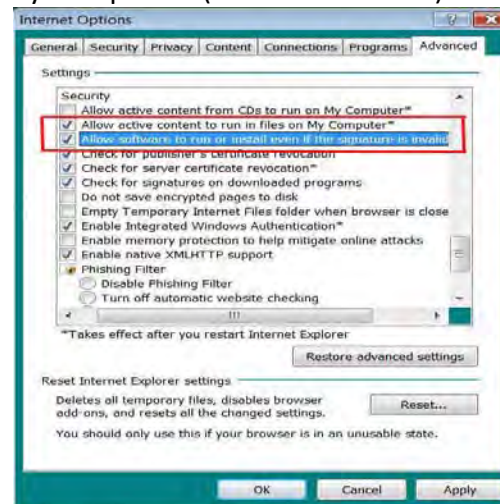
Click OK. Click Apply. Click OK. Close Internet Explorer.

**Pic 13**

If you get a error message that says the program cannot load because the publisher is unknown or the program is unsigned, go to internet explorer, tools, internet options (refer to Pic 9), then go to the "Advanced" tab (RED box in Pic 14), this will open the window in Pic 15, scroll down to "Security", and select the options to "Allow software to run or install even if the signature is invalid", and "Allow Active Content to Run Files on My Computer" (RED box in Pic 15).



**Pic 14**



**Pic 15**

To connect to the DVR from the remote computer you would then open an Internet Explorer browser window and enter the internet IP of your router that you got by going to [www.myipaddress.com](http://www.myipaddress.com) (you have to do this from a PC that connect to same Router as your DVR).

**Notice: If you cannot use HTTP port 80 or 2000 because the port is being used by another program, or it is being blocked by your service provider, you can use another port in the same range. If you do so then you need to forward the IP address of the router to the other port, change the port in the DVR NETWORK settings, and you need to add the port number after the IP address. For example, if you set the HTTP port as 82, you need to enter the IP address as 192.168.0.25:82. After you have forwarded the ports you can verify that the ports are open by going to [canyouseeme.org](http://canyouseeme.org) from a computer that is attached to the same router as the DVR.**

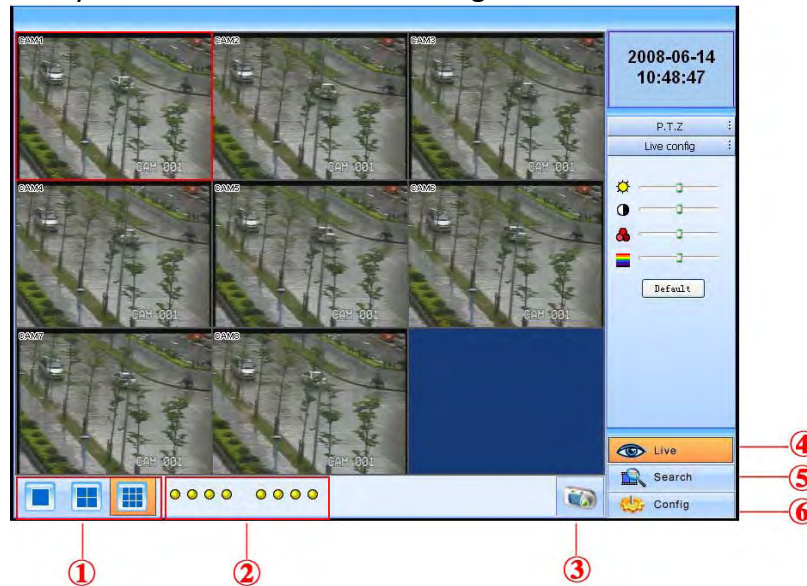
**Once you able to login, you will get the login screen, by default the login and password are admin and 123456 .**

**Notice: If you still have problems connecting remotely:** *Anti-virus programs could also block the ActiveX control, if you still have a problem try closing them. Other plug-ins could also block it. Close firewalls in Windows and in the router if applicable. If you run Windows Vista or Windows 7, you will need to disable User Account (UAC). Follow this link for instructions: <http://www.howtoqeeek.com/howto/windows-vista/disable-user-account-control-uac-the-easy-way-on-windows-vista/>*

**If you have a router plugged into another router, for example, if you have the DVR attached to a router which is attached to DSL or Cable router, you may need to forward port 80 and 2000 (or whatever ports you are using) on the DSL or Cable router to the IP address of the router that the DVR is attached to, so that router can then forward the port to the DVR. Please refer to the PORT FORWARDING section above on how to get instructions on how to forward the port on the other router.**

## Remote Viewing Window

When you connect you will see the remote viewing window shown below:



**Pic 14**

- ① Full screen, 1/4/8 screen display mode.
  - ② Camera indicators:
  - ③ Picture snapshot
  - ④ Remote viewing: adjust the color of cameras and control PTZ.
  - ⑤ Remote playback and backup: remotely playback and backup, check system log and journal.
  - ⑥ Remote menu setup: set up the DVR configuration remotely
- ④, ⑤, and ⑥ are the function blocks. When one is active, the button will show orange.

**For information on the features of, and how to use the remote viewing program refer to The remote viewing section of the User's Manual.**

**Notice: If you still have problems connecting remotely:** *Anti-virus programs could also block the ActiveX control, if you still have a problem try closing them. Other plug-ins could also block it. Close firewalls in Windows and in the router if applicable.*

**If you have a router plugged into another router, for example, if you have the DVR attached to a router which is attached to DSL or Cable router, you may need to forward port 80 and 2000 (or whatever ports you are using) on the DSL or Cable router to the IP address of the router that the DVR is attached to, so that router can then forward the port to the DVR. Please refer to the PORT FORWARDING section above on how to get instructions on how to forward the port on the other router.**


## MYQ-SEE DDNS SETUP GUIDE FOR QT5, QSDT, AND QSD2308/16 DVRS

Dynamic Domain Name Service (DDNS) provides the capability for a networked device using the Internet Protocol Suite to notify a DDNS host to change the active DNS configuration of its hostnames or addresses. This is a useful feature that your Q-See DVR system is equipped with and can be helpful in avoiding any issues that might occur due to frequent or unplanned changes to your Public/WAN IP address. Enabling DDNS on your Q-See DVR system will allow you to connect to your device through a DDNS host such as [myq-see.com](http://myq-see.com). In order to facilitate this ability on your Q-See DVR system, you must first set up Port Forwarding as directed in the User Manual for this device. Once you have enabled Port Forwarding, you can configure your DDNS information by following these steps:

- Using a computer that is connected to the same network as your Q-See DVR, use your IE Browser to go to <http://myq-see.com>.
- Click on the New User? Link at the bottom of your page (<http://myq-see.com/reg.asp>).
- Complete the registration process by following the on-screen directions and click the [Submit] button at the bottom of your screen (Figure 1).



The screenshot displays a web page titled "Welcome to MintDNS" with the subtitle "Create a user account or choose existing users below to begin." The page is for "DDNS account creation" and features a "NEW USER REGISTRATION" form. The form includes the following fields and options:

NEW USER REGISTRATION	
EMAIL ADDRESS	<input type="text" value="xxxx@xxxx.com"/>
PASSWORD	<input type="password" value="*****"/> 
PASSWORD CONFIRM	<input type="password" value="*****"/>
FIRST NAME	<input type="text" value="XXXXX"/>
LAST NAME	<input type="text" value="XXXXX"/>
SECURITY QUESTION	<input type="text" value="My favorite place."/> 
ANSWER	<input type="text" value="XXXX"/>
<input type="button" value="Submit"/> <input type="button" value="Reset"/>	

Below the form, there is a link: "Already have an account? [Click here to login.](#)"

At the bottom of the page, it says: "All Rights Reserved © 2008 [Dynamic DNS Services](#)"

(Figure 1)



(Figure 2)

- d. The next screen will ask you to create a domain name. Domain names must start with an (a-z) or (0-9) and cannot contain a hyphen. Once you choose your domain name, click on the [Request Domain] button. This will generate a confirmation screen which tells you if your Domain name is available and list an IP address (Figure 2). Verify that this is your current IP Address by going to [www.myipaddress.com](http://www.myipaddress.com) and checking that it is the same address listed in your confirmation screen (Figure 2).
- e. Once you have completed steps a-d, go to the DVR and go to Menu→System→Network (Red box in Figure 3).
- f.



(Figure 3)

- g. Clicking on Network will generate a Network settings dialog box as illustrated in Figure 4. Click on the [DDNS] button to generate a DDNS setting dialog box as illustrated in Figure 5.

**NOTICE: You need to put your public DNS. This can be found in your Router Status tab. Usually there are 2 DNS entries (DNS1 & DNS2) input both addresses (Red box in Figure 4). If you router does not list the DNS addresses get them from your Internet Service Provider.**

- h. Enter the User Name, Password and Domain Name that you registered for through <http://myq-see.com>.

NETWORK

HTTP port 000 Server port 0500

DHCP  IP 102.100.000.101

Subnet 255.255.255.000 Gateway 102.100.000.001

DNS1 102.100.000.001 DNS2 102.100.000.002

PPPOE

User name

Password

Video DDNS OK Cancel

(Figure 4)

DDNS

Server MY-QSEE

User name myself@myemailaddress.com

Password myqseeaccountpassword

Domain myqseeaccount.myq-see.com

Host Domain myq-see.com

OK Cancel

(Figure 5)


# IPHONE ACCESS SETUP GUIDE FOR QT5, QSDT, AND QSD2308/16 DVRS

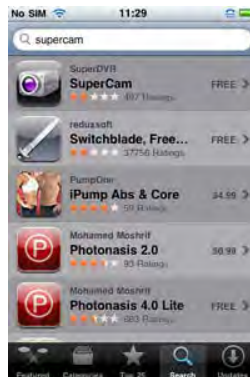
## Accessing From iPhones

At present, the software only supports versions of iPhone OS 2.2 and above, If your iPhone firmware is lower, please upgrade it. Below is the setup method for iPhone mobile clients:

**Step 1 :** Enter into App Store function of iPhone (Red box in image below)



**Step 2:** Enable “search”  function to search for “SuperCam”, the required program will be displayed on the top of search box



**Step 3:** Click SuperCam, enter into “introduce” interface and click FREE”, it will change into “INSTALL”





**Step 4:** Enter your iTunes Store password, click “OK” will display below interface

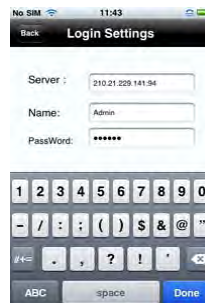
**Note:** the first time you operate please enter your user ID; if you do not have a Store account, you need to setup one.




**Step 5:** Download and install. After installed, SuperCam icon will display. Click this icon, a function interface will appear



**Step 6:** Click “System setting, enter into login interface. Enter DVR’s IP address (or domain name), user’s ID and password. Click Back to save.



**Step 7:** Click Live View, the default Cam1 picture will be displayed. Click  to capture picture.



**Step 8:** On function interface, click Image View to view the captured picture. Click ◀ or ▶ to switch to next or previous picture. Click 🗑️ to delete the current picture.



### iPhone help



Pic1

Pic2

Pic3

### Live View

After successfully installing SuperCam software, Click on System Setting (Pic 1), and then input DVR's IP address or Domain name, User name and password to log in (Pic 2). If connected successfully, it will go to Live View of CH1 as default (Pic 3), please choose other desired channels from channel button underneath. Below is a table of functions:

1. 🟢: Switch channels
2. 📷: Picture snap.
3. 🕒: PTZ control (if server camera is PTZ Camera only) (pic4)

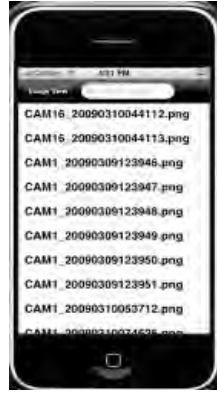
### PTZ Control buttons:

Item	Buttons	Explanations
1		pan
2	<b>ZOOM</b>	Zoom in  Zoom out
3	<b>FOCUS</b>	Long Focus  Short Focus
4	<b>IRIS</b>	Lighter  Darker
5		return to live







**Image View**



Pic 4

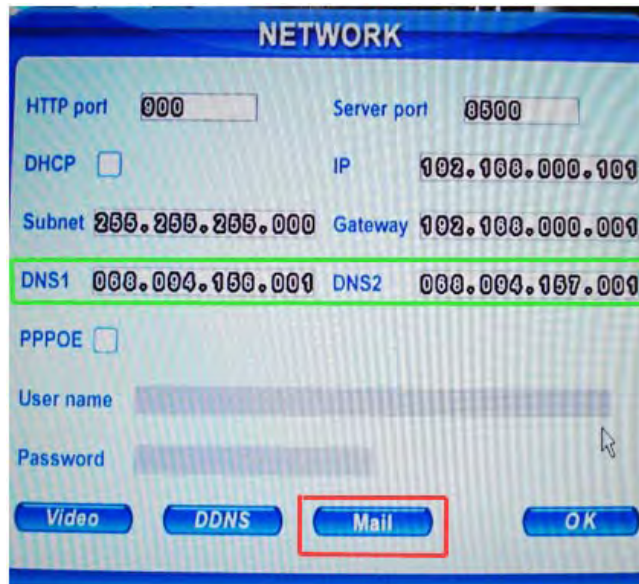


Pic 5

Item	Button	Function	Item	Button	Function
1		Previous picture	2		Next Picture
3		The first Picture	4		The last picture
5		Delete	6		Search Pictures, search page as Pic 5

## EMAIL NOTIFICATION SETUP GUIDE FOR QT5, QSDT, AND QSD2308/16 DVRS

To setup Email, go to Menu-System-Network and click on the Mail button (Red box in Pic 1).



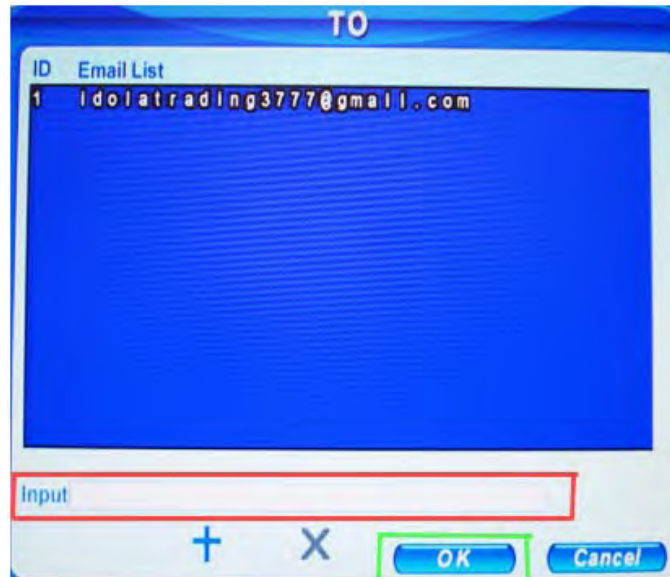
Pic 1

We recommend using Gmail Email. As an example, see picture below:



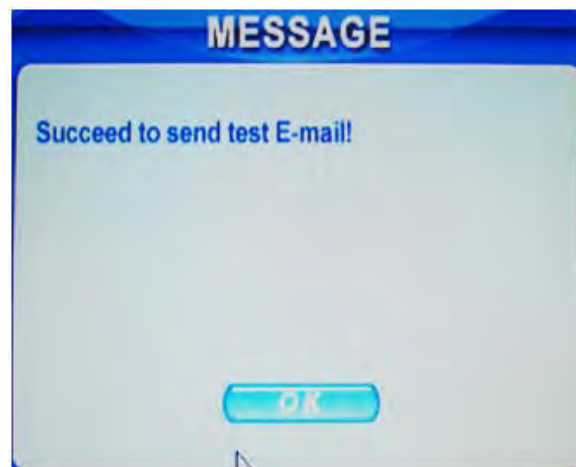
Pic 2

Then click on "To" (Red box in Pic 2) to bring up the picture below and enter the Receiver email address as shown below:  
in the "Input" box (Red box in Pic 3), put the receiver email address then hit OK button (Green box in Pic 3) to add to the list. You can input multiple email addresses.



Pic 3

Clicking OK will take you back to the Mail screen. Then click on TEST EMAIL (Green box in Pic 2) which will display the picture below.



Pic 4

If you get Failed to send test email, you need to make sure the DNS address is correct in the Network Menu.

**NOTICE: You need to put your public DNS. This can be found in your Router Status tab. Usually there are 2 DNS entries (DNS1 & DNS2) input both addresses (Green box in Pic 1). If you router does not list the DNS addresses get them from your Internet Service Provider.**

Note: Email function on this DVR just sends email notifications without a picture attached. The email contains the channel name, and date and time the motion occurred.

**If you have questions:**

Contact Us:

**Mailing Address:**

DPS Inc.  
8015 E. Crystal Dr  
Anaheim, CA 92807

**Website:**

<http://www.q-see.com>

**Fax:**

714-998-3509

**Customer Service:**

Phone: 877-998-3440 x 538  
Email: [cs@dpsi-usa.com](mailto:cs@dpsi-usa.com)  
Live Chat Link on our website

**Tech Support:**

Phone: 877-998-3440 x 539  
Email: [ts@dpsi-usa.com](mailto:ts@dpsi-usa.com)  
Live Chat Link on our website

REV 071510