

**Model No.**

**- 8280 -**

**p/n 108305**

**Specifications**

- Height: 75" (23" packed)
- Length: 72" (72" packed)
- Depth: 92" (40" packed)
- Weight: 135 lbs.



**- Clam Customer Service Information -**

**NOTICE!!** Once used, this shelter cannot be returned to the store. If you have a **Warranty Claim**, please contact Clam Corporation Customer Service by email inquiry or direct by calling:

- Customer Service Hrs: - 8am to 4pm, Mon. - Fri. Central Standard Time
- Clam Corporation, Inc.  
600 Clydesdale Trail  
Medina, MN 55340
- Phone - 763-231-4120
- Fax - 763-231-4121
- Website – [www.clamcorp.com](http://www.clamcorp.com)
- Email – [www.customerservice@clamcorp.com](mailto:www.customerservice@clamcorp.com)

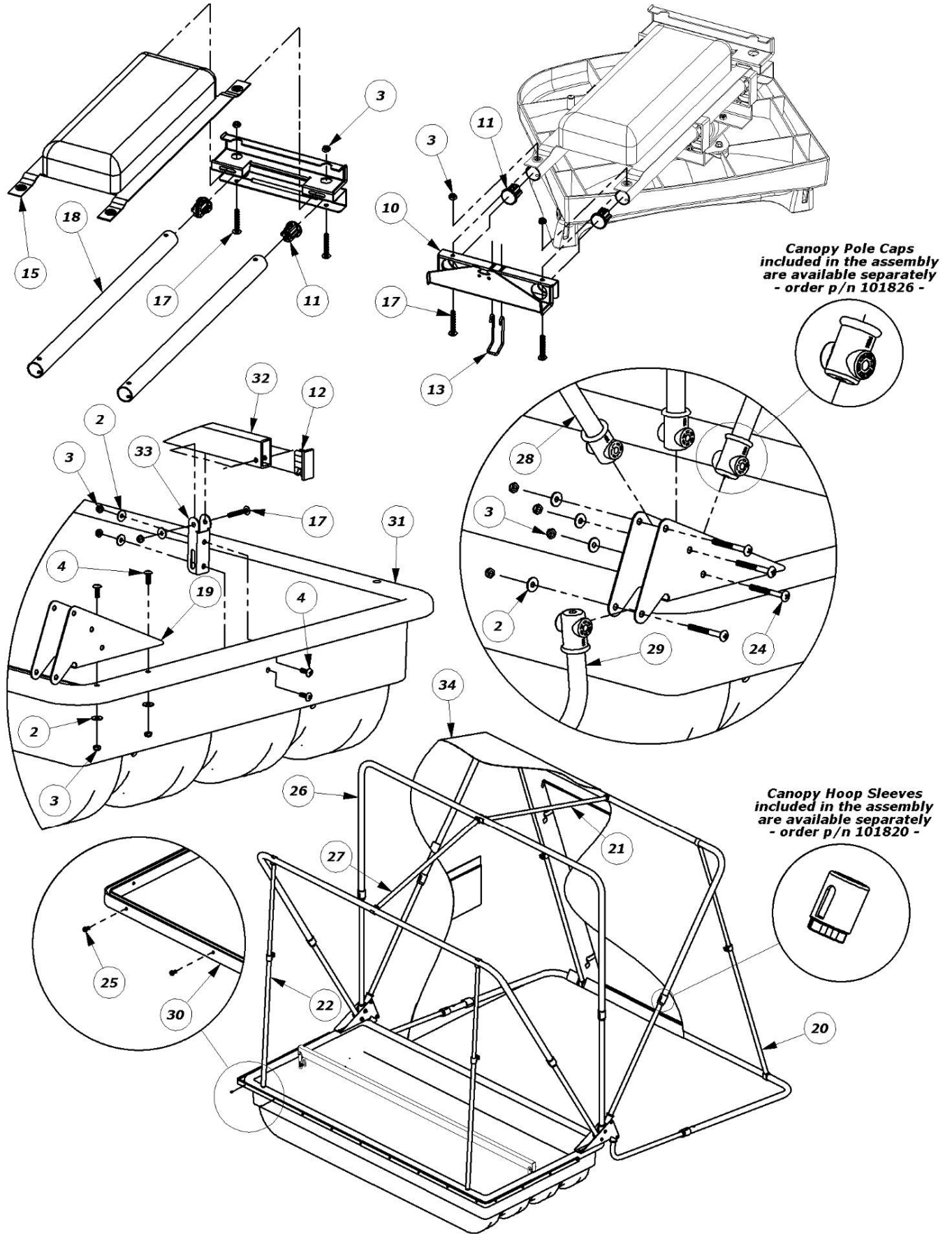


Clam Corporation, Inc. Manual – 102109

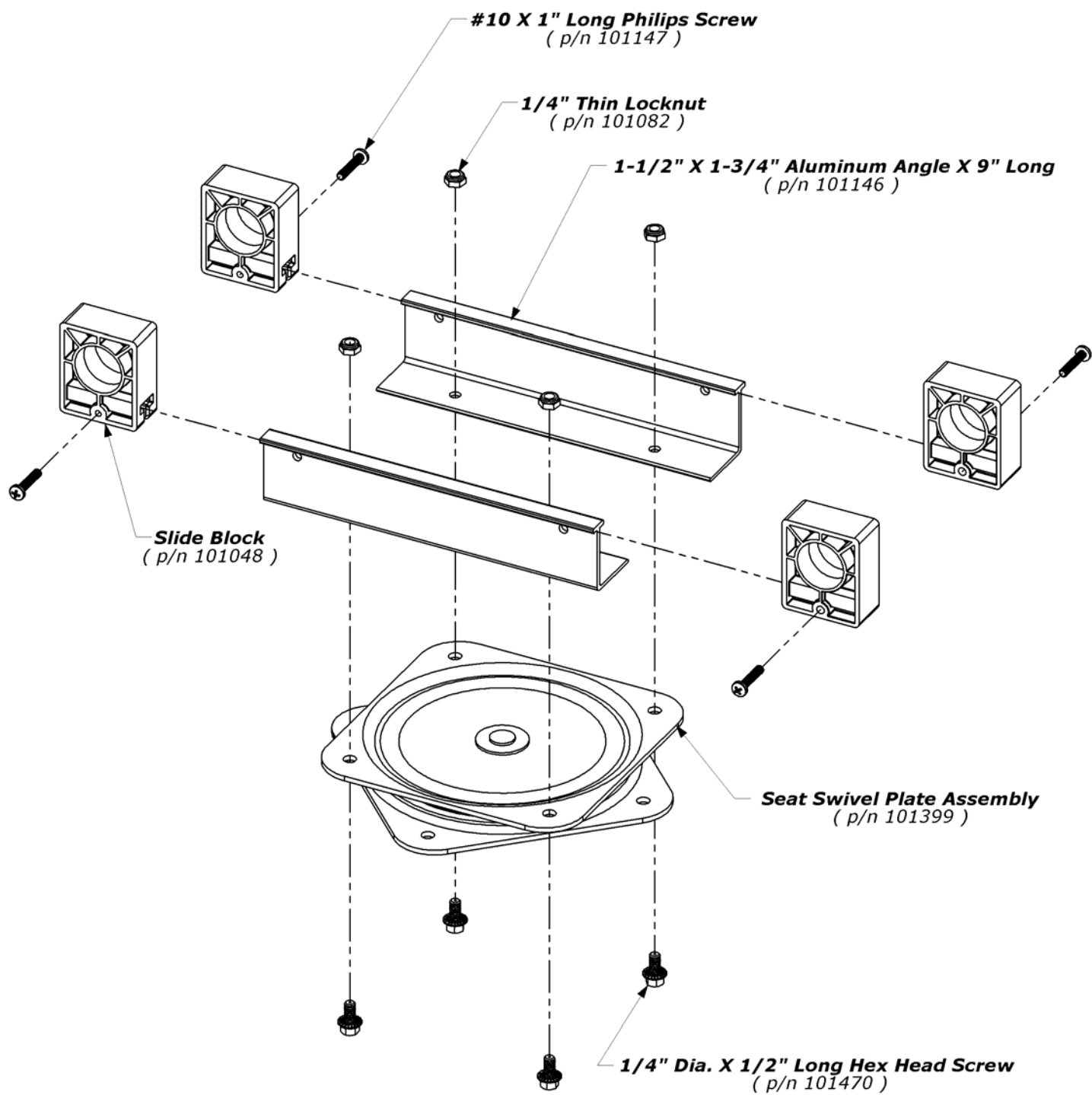
## - Parts List-

Item	Qty	p/n	Description
<b>1</b>	<b>8</b>	<b>101048</b>	<b>Slide Block</b>
<b>2</b>	<b>18</b>	<b>101081</b>	<b>1/4" Flat Washer</b>
<b>3</b>	<b>34</b>	<b>101082</b>	<b>1/4" Thin Locknut</b>
<b>4</b>	<b>8</b>	<b>101088</b>	<b>1/4" Dia. X 3/4" Long Phillips Screw</b>
<b>5</b>	<b>1</b>	<b>101095</b>	<b>Tow Rope</b>
<b>6</b>	<b>4</b>	<b>101146</b>	<b>1-1/2" X 1-3/4" Aluminum Angle X 9" Long</b>
<b>7</b>	<b>8</b>	<b>101147</b>	<b>#10 X 1" Long Phillips Screw</b>
<b>8</b>	<b>2</b>	<b>101399</b>	<b>Seat Swivel Assembly</b>
<b>9</b>	<b>2</b>	<b>101420</b>	<b>Front Seat Bracket</b>
<b>10</b>	<b>2</b>	<b>101424</b>	<b>Rear Seat Bracket</b>
<b>11</b>	<b>8</b>	<b>101429</b>	<b>1-1/8" Dia. Tube Cap</b>
<b>12</b>	<b>2</b>	<b>101430</b>	<b>1" x 2" Rectangular Tube Cap</b>
<b>13</b>	<b>2</b>	<b>101442</b>	<b>Latch Clip</b>
<b>14</b>	<b>1</b>	<b>101458</b>	<b>Center Console</b>
<b>15</b>	<b>2</b>	<b>101466</b>	<b>Cloth Accessory Hammock</b>
<b>16</b>	<b>16</b>	<b>101470</b>	<b>1/4" Dia. X 1/2" Long Hex Head Screw</b>
<b>17</b>	<b>10</b>	<b>101486</b>	<b>1/4" Dia. X 1-3/4" Long Phillips Screw</b>
<b>18</b>	<b>4</b>	<b>101652</b>	<b>1-1/8" Dia. Tube</b>
<b>19</b>	<b>2</b>	<b>101810</b>	<b>Canopy Bracket</b>
<b>20</b>	<b>2</b>	<b>101836</b>	<b>Front Adjustable Spreader Pole</b>
<b>21</b>	<b>1</b>	<b>101839</b>	<b>Long Roof Spreader Pole</b>
<b>22</b>	<b>2</b>	<b>101840</b>	<b>Rear Adjustable Spreader Pole</b>
<b>23</b>	<b>2</b>	<b>101905</b>	<b>Folding Seat Assembly</b>
<b>24</b>	<b>8</b>	<b>101906</b>	<b>1/4" Dia. X 2-1/2" Long Phillips Screw</b>
<b>25</b>	<b>17</b>	<b>101938</b>	<b>#8 X 1/2" Long Phillips Screw</b>
<b>26</b>	<b>4</b>	<b>102071</b>	<b>Canopy Hoop Pole</b>
<b>27</b>	<b>1</b>	<b>102078</b>	<b>Short Roof Spreader Pole</b>
<b>28</b>	<b>6</b>	<b>102073</b>	<b>Straight Canopy Pole</b>
<b>29</b>	<b>2</b>	<b>102074</b>	<b>Bent Canopy Pole</b>
<b>30</b>	<b>1</b>	<b>102080</b>	<b>U-Channel Molding</b>
<b>31</b>	<b>1</b>	<b>102081</b>	<b>Thermal-X Base</b>
<b>32</b>	<b>1</b>	<b>102082</b>	<b>1" X 2" Rectangular Support Tube</b>
<b>33</b>	<b>2</b>	<b>102083</b>	<b>Rail Hanger Bracket</b>
<b>34</b>	<b>1</b>	<b>102137</b>	<b>Thermal-X Tent</b>

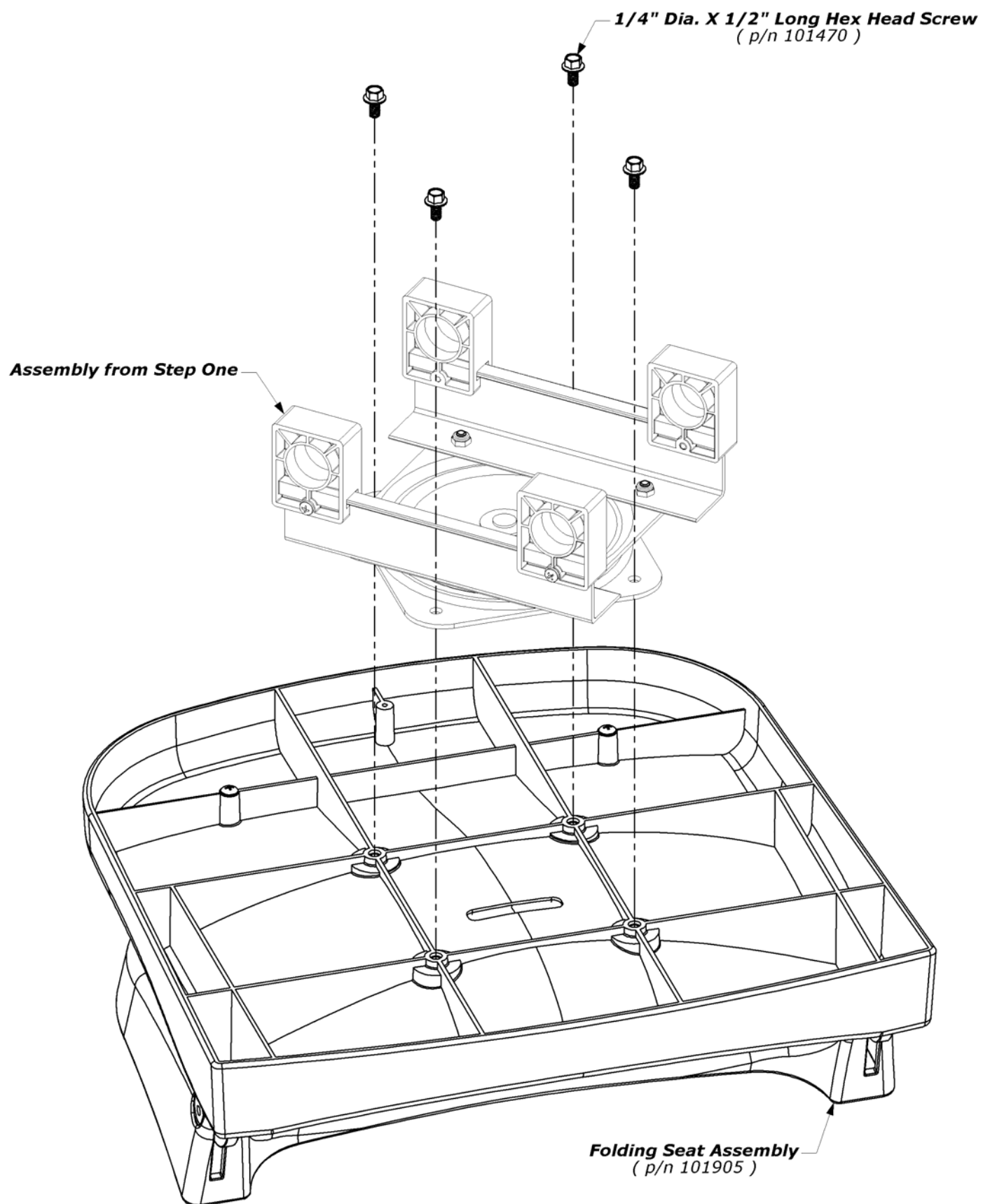
# - Parts Diagram -



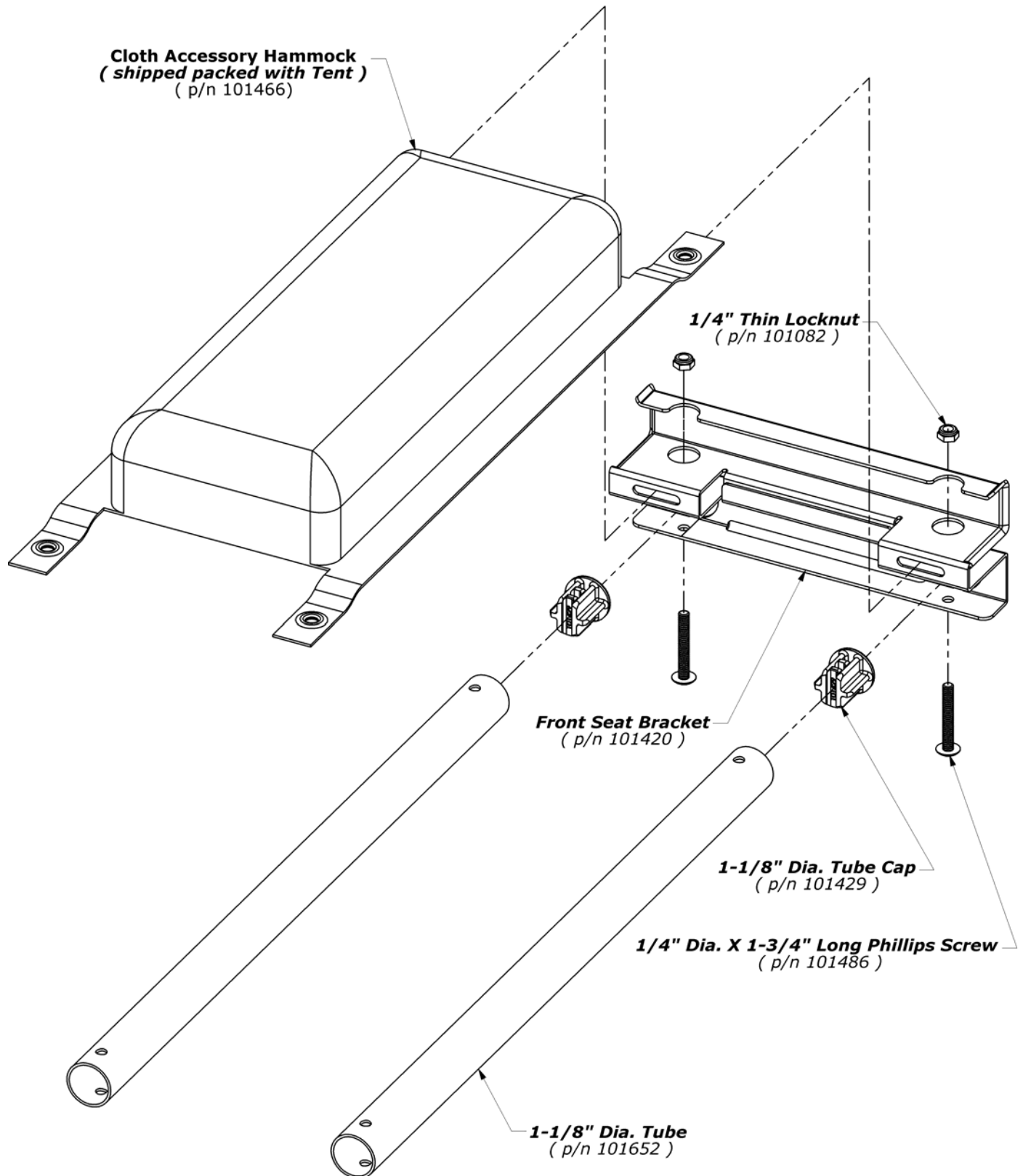
## - Step One -



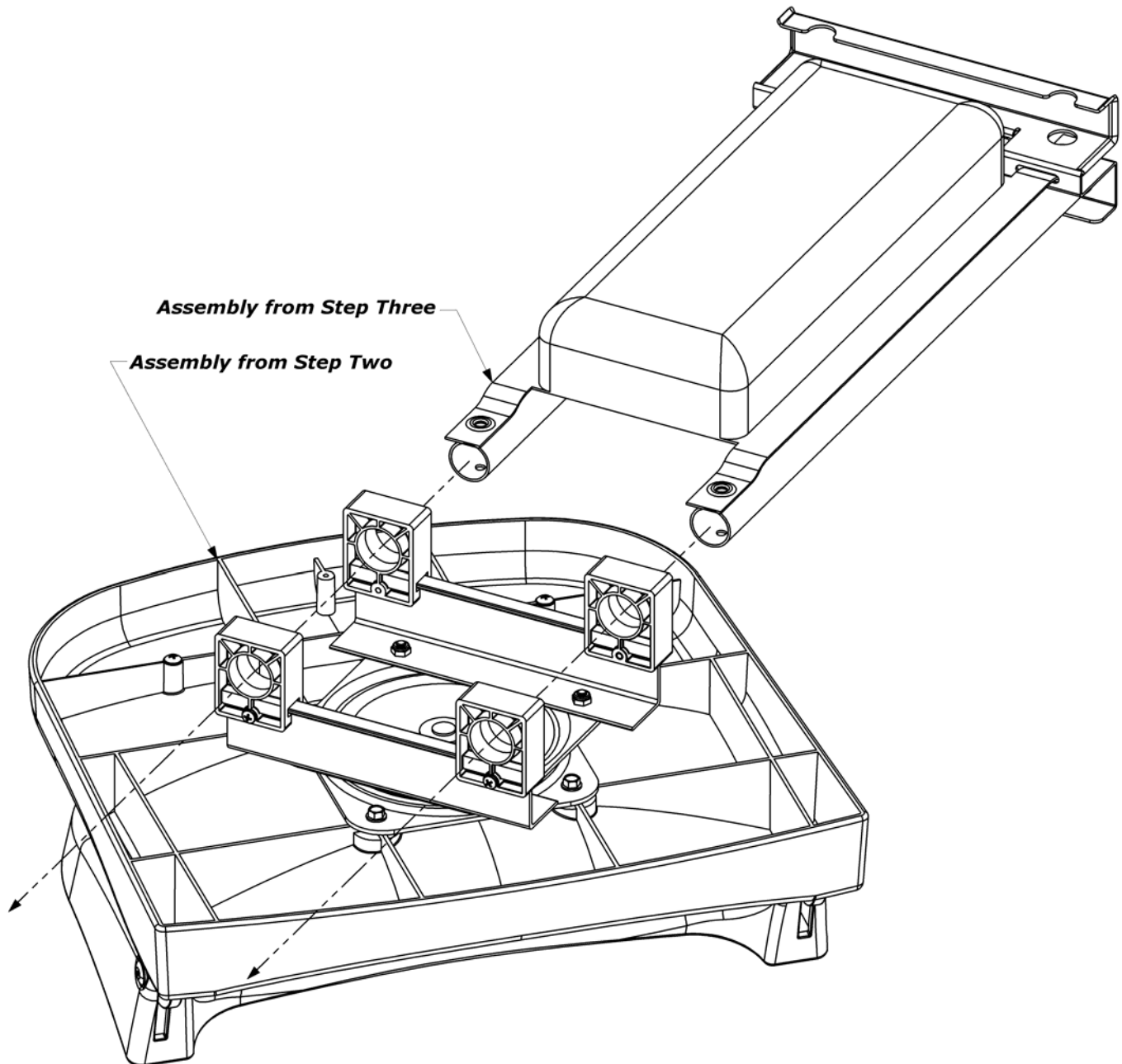
## - Step Two -



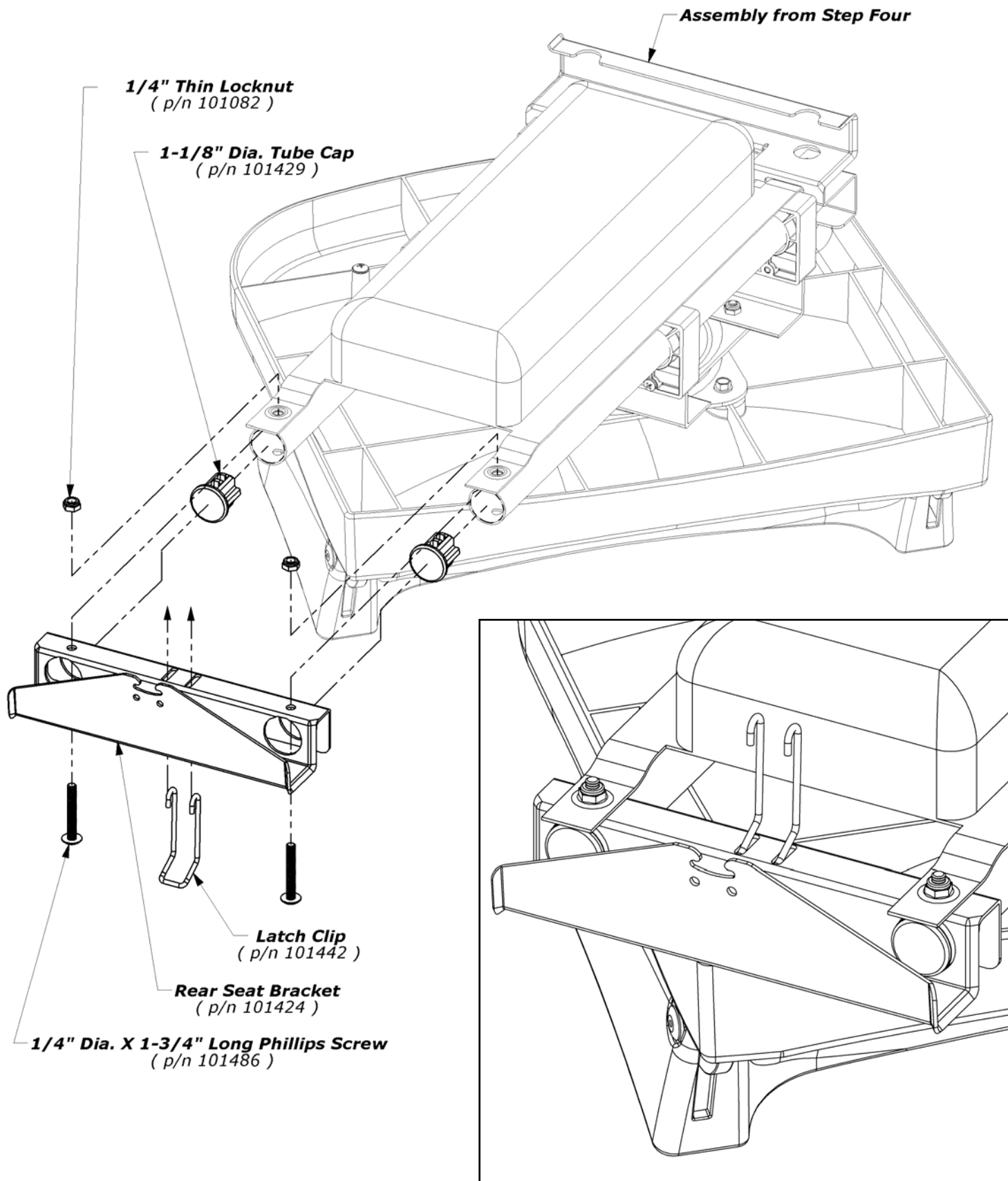
## - Step Three -



## - Step Four -

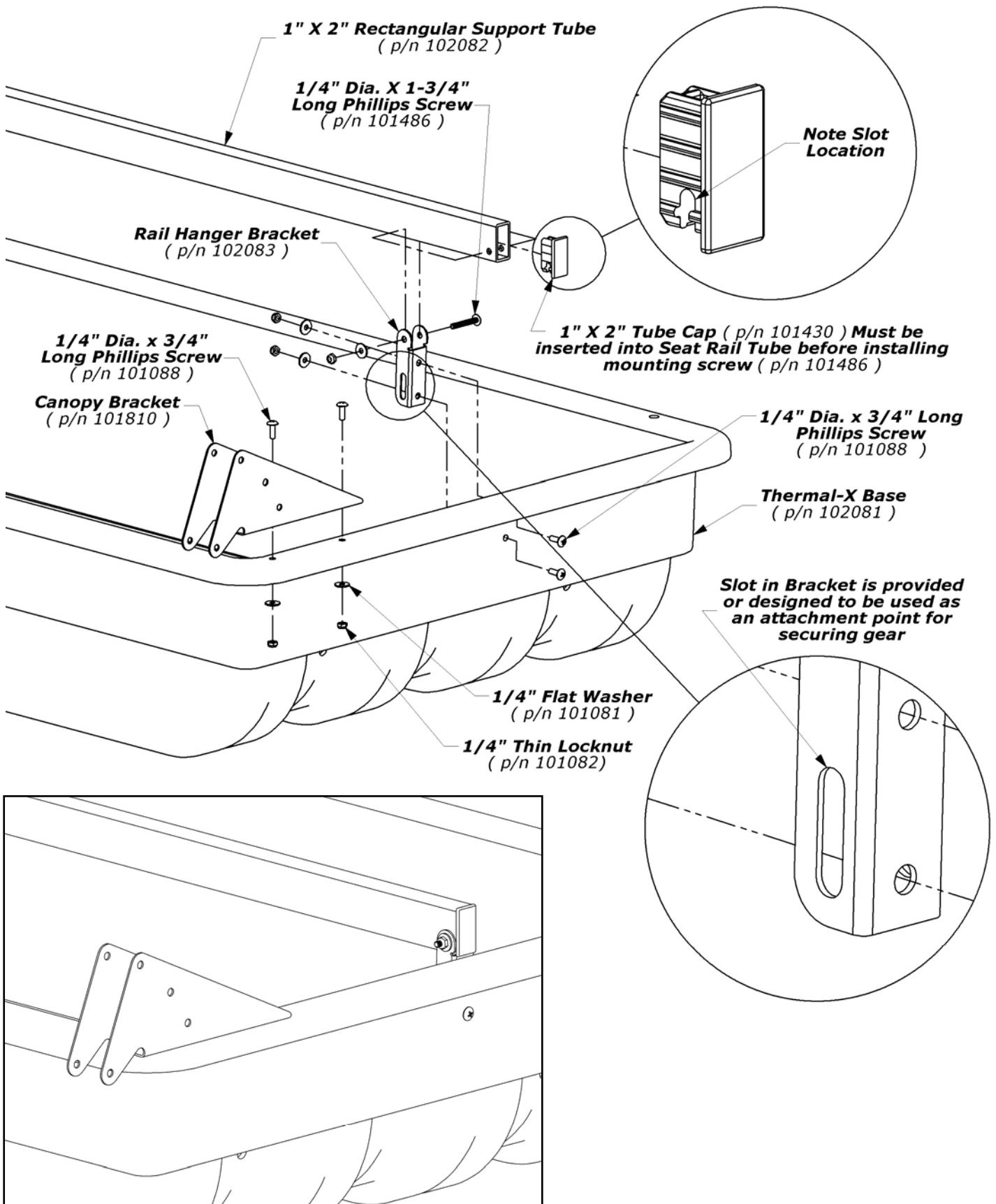


## - Step Five -

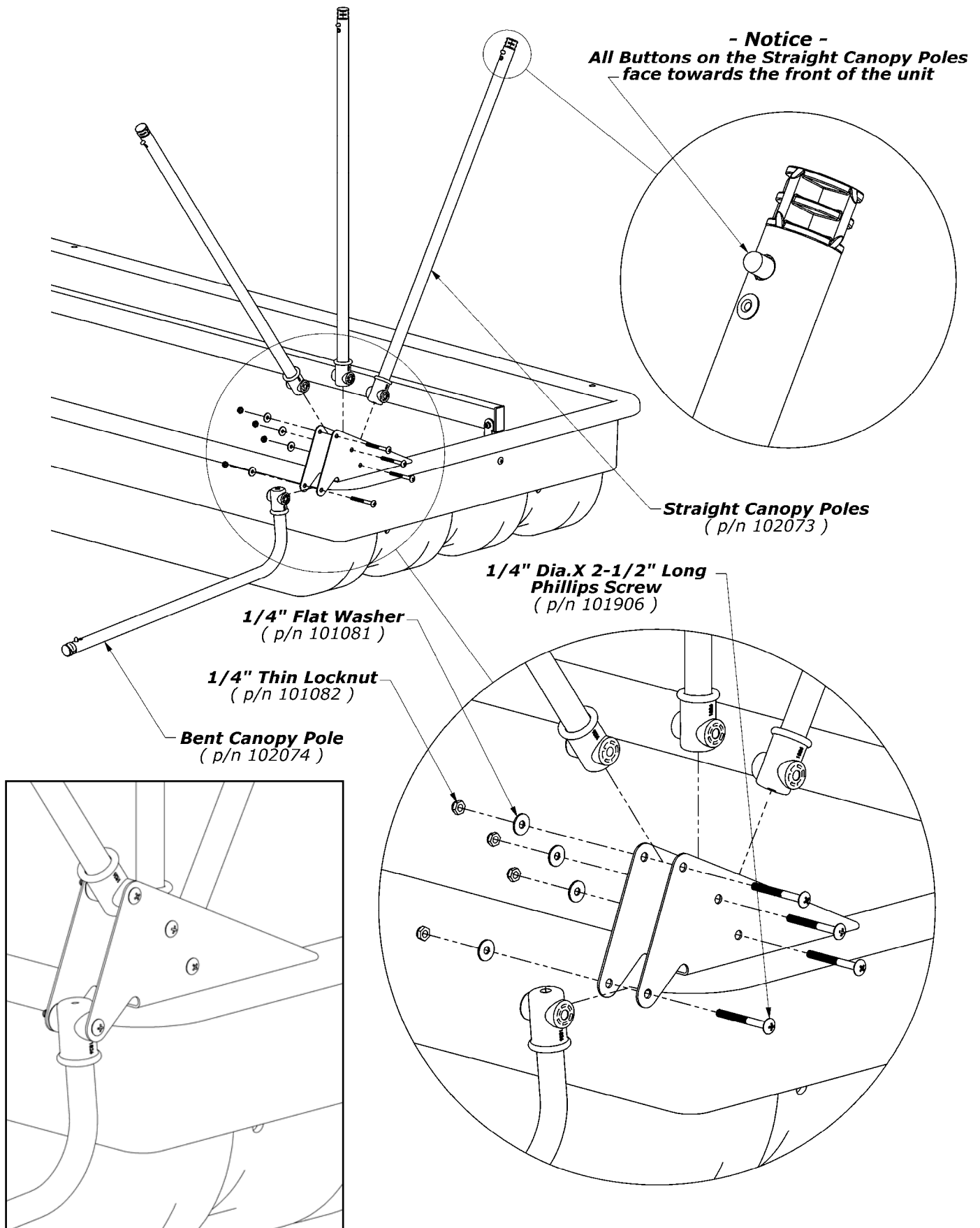




## - Step Six -

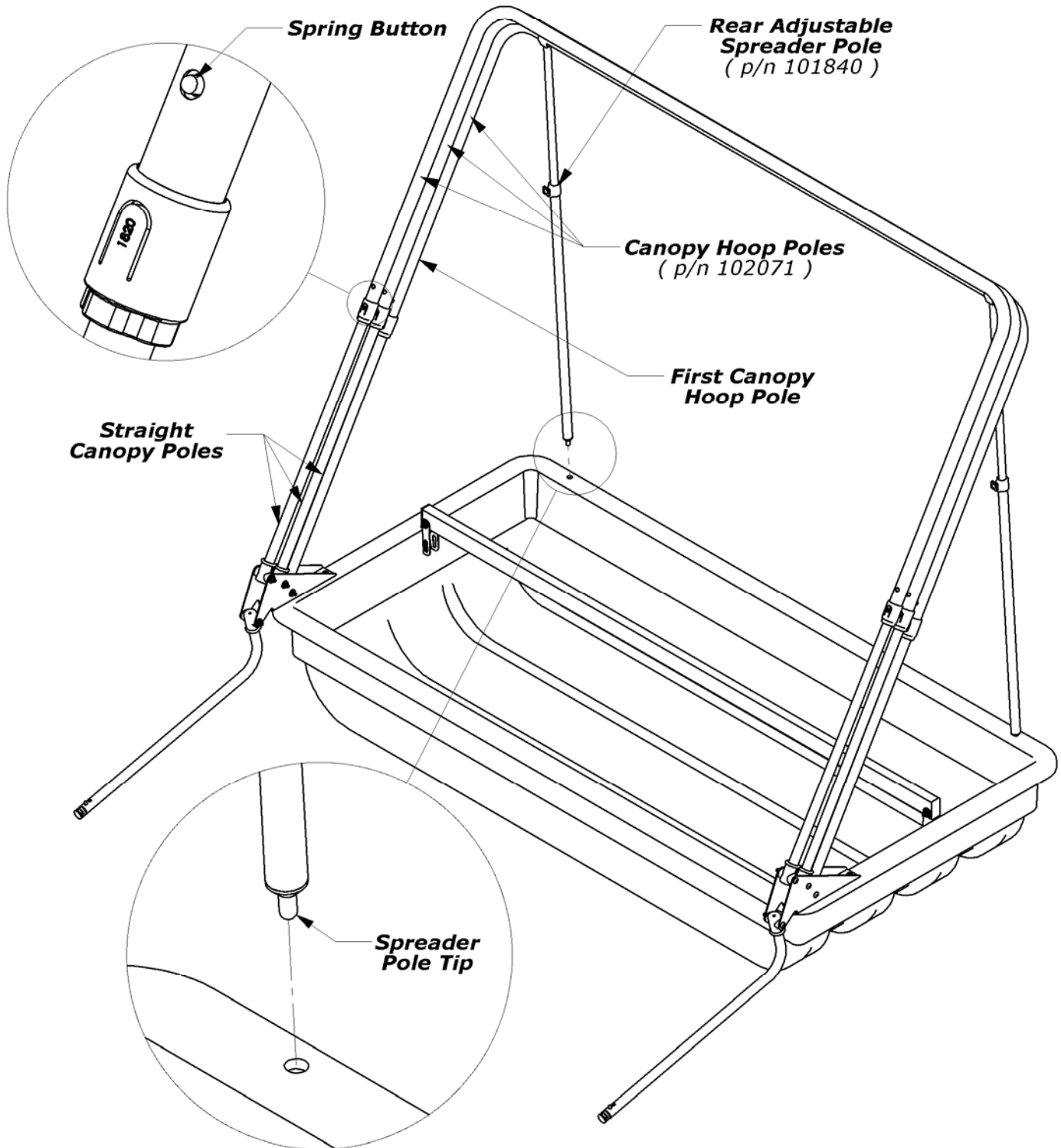


## - Step Seven -



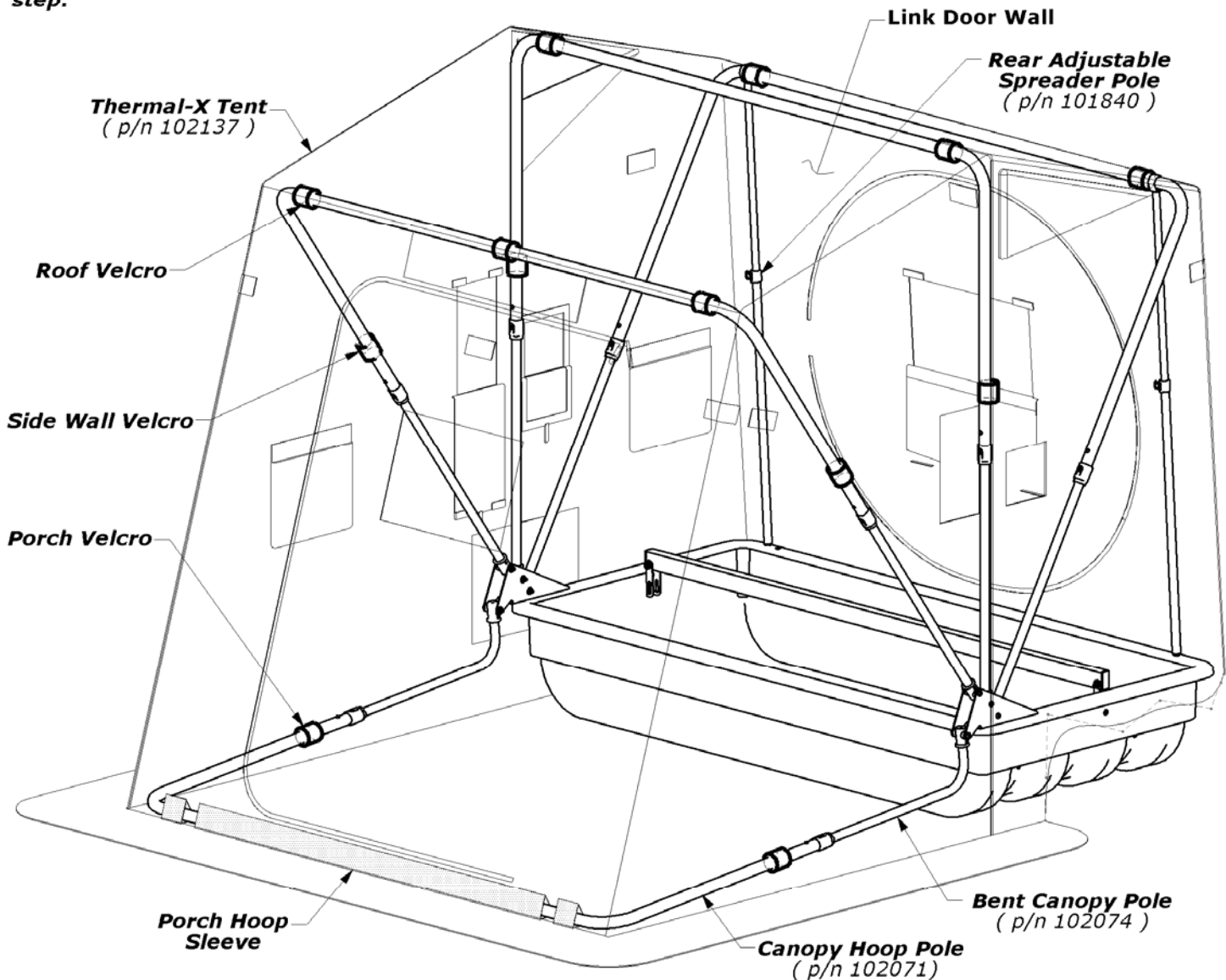
## - Step Eight -

- Slide three Canopy Hoop Poles onto the mounted Straight Canopy Poles until the Spring Buttons engage the holes near the ends of each Canopy Hoop Pole.
- Support the First Canopy Hoop Pole as pictured with the Rear Adjustable Spreader Poles by inserting the Spreader Pole Tips into the predrilled holes of the Base, and then clipping the opposite ends onto the First Canopy Hoop Pole.
- Rest the two remaining Canopy Hoop Poles against the now supported first.



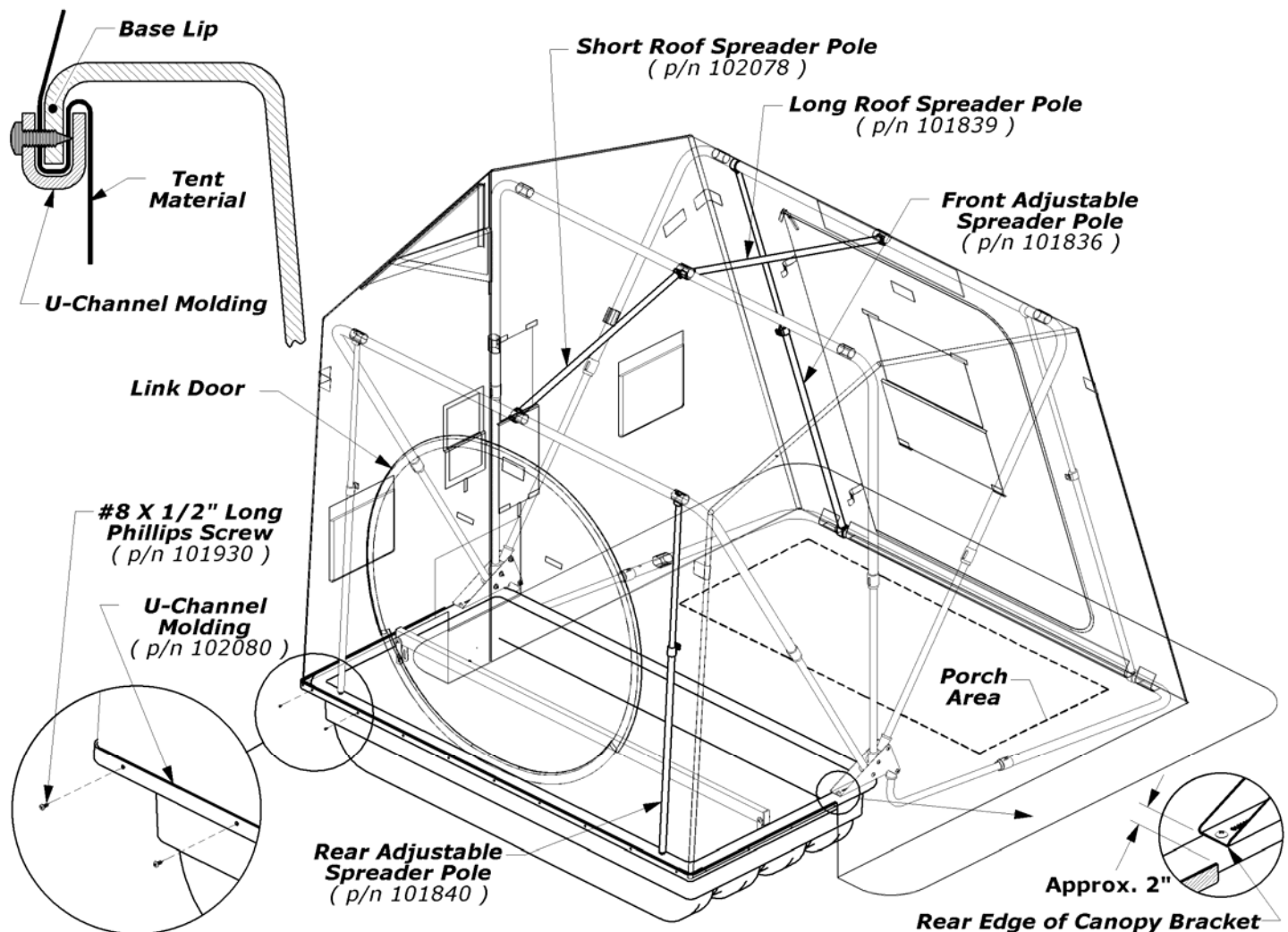
## - Step Nine -

- **Drape the Tent over the supported hoops then go inside and spread out the Canopy Hoop Poles, attaching the Roof Velcro as you go.**
- **Orient the remaining Canopy Hoop Pole so that the holes face upward and then feed the length of the pole through the three Porch Hoop Sleeves sewn on the Tent. Next slide this Canopy Hoop Pole onto the Bent Canopy Poles, engaging the Spring Buttons.**
- **Attach the Porch and Side Wall Velcro on each side of the Tent. Remove the Rear Adjustable Spreader Poles now supporting the Canopy Hoop at the Link Door Wall to allow the tent to be "set" in the next step.**



## - Step Ten -

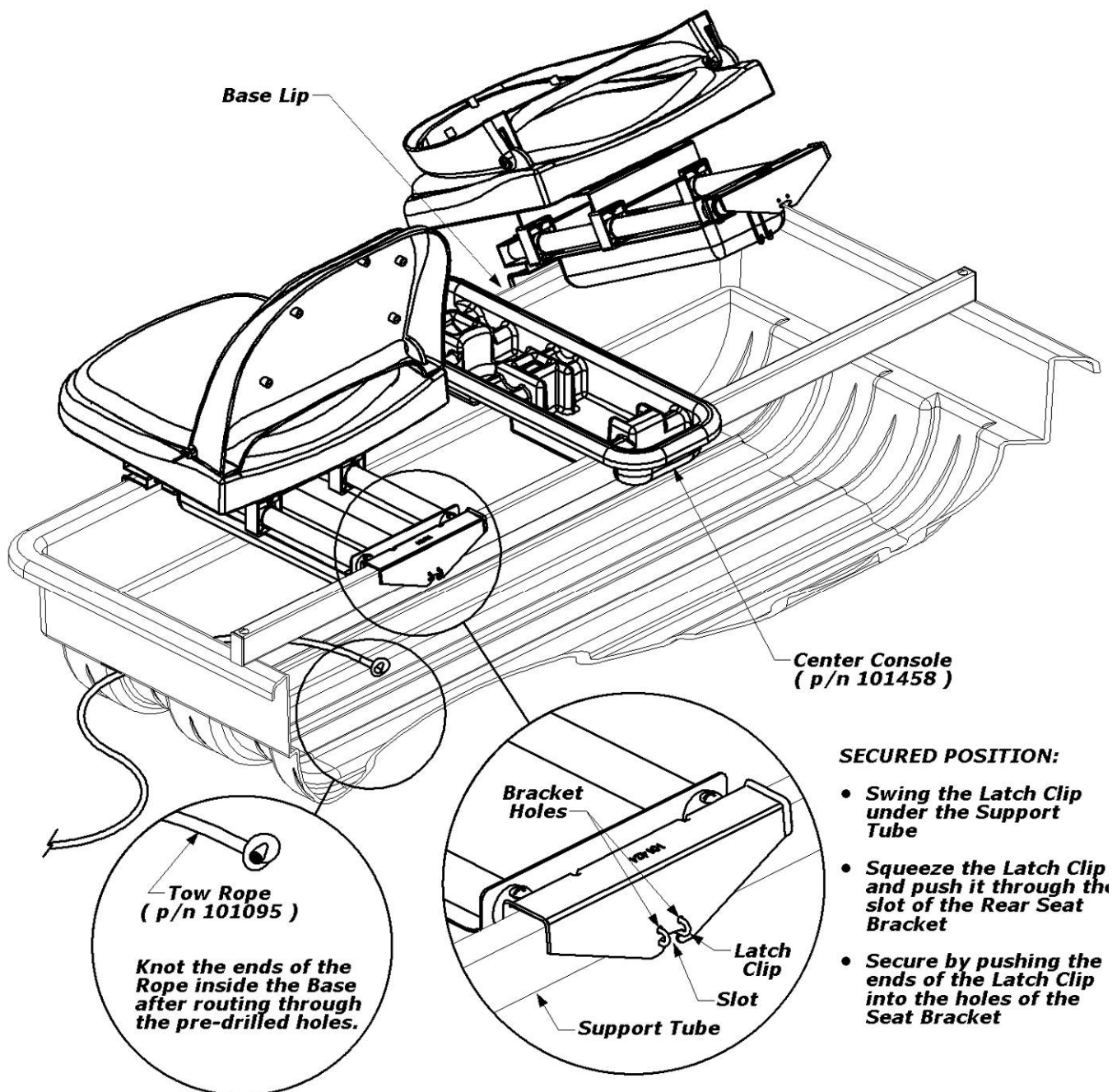
- To "set" the Tent, from outside the Shelter, grasp the Tent Material under the Link Door and pull it downward. Observe the Porch Area of the Tent lifting accordingly as you pull. When the U-Channel Molding is correctly installed, the Canopy Hoop Pole in the Porch Area will lightly touch the floor.
- To achieve this condition, start by finding the center of the Molding. From behind the unit, pull the Tent Material under the Link Door downward and fold the Tent Material under the Lip of the Base. Fold the Molding in half to find the midpoint. Take the midpoint of the Molding and press it onto the Tent material that you have folded over the Base Lip. Continue pressing the Molding outward in both directions until you have secured about twelve inches of material to the Base.
- Having temporarily secured the Tent to the Base, take a walk around the unit. Readjust the Molding until you have verified the proper position of the Canopy Hoop Pole vs/the floor in the Porch Area. Also check that the Tent sides and corners are properly proportioned.
- When satisfied, continue applying the Molding around the Shelter, one direction from center and then the other, gathering the Tent Material as you go so that surface is relatively wrinkle-free and snug. Continue until both ends of the Molding are completely pressed on.  
Note: You may need to trim the Molding ends with a Side-Cutter if they extend beyond the rear edge of the Canopy Brackets or if they are not equal. From outside the Tent, you can feel the Rear Edge of the Canopy Brackets to verify this position. If necessary, Trim the Molding a couple inches behind this Rear Edge of the Canopy Bracket.
- Next install Roof Spreader Poles as indicated. With the Roof Spreader Poles in place, install and extend the Rear Spreader Poles. Do the same with the Front Spreader Poles to take up the remaining slack of the Tent.
- If everything still looks good, secure the Molding with the included #8 Phillips Screws. Evenly space them about every ten to twelve inches, and also put a screw in the center of both corners. Since there aren't any predrilled holes, it's advisable to use a powered driver for this operation.



## - Step Eleven -

- Angle the Seat Assembly slightly while placing the bottom lip of the Front Seat Bracket under the outside edge of the Base Lip.
- Tilt the complete assembly downward so that the Rear Seat Bracket lands upon the Support Tube.
- Reach under the Rear Seat Bracket and slide the Latch Clip outwards and then up against the underside of the Support Tube. Squeeze the Latch Clip into the horizontal slot of the Rear Seat Bracket.
- Secure the position of the Latch Clip by pushing it into the two holes located above the horizontal slot of the Rear Seat Bracket.
- Place Center Console onto the Support Tube as pictured . . . and you are ready to fish!!!

**WARNING: ALWAYS KEEP THE LATCH CLIP IN THE SECURED POSITION DURING USE. FAILURE TO DO SO COULD RESULT IN INJURY FROM THE SEAT COMING OFF OF ITS MOUNTING SYSTEM.**



## **- Tips for Use -**

*Folding and transporting your Fish Trap is easy:*

- **Unsnap the Roof Spreader Poles, Rear Spreader Poles, and Front Spreader Poles. Lay them in the bottom of the base.**
- **Push the spring buttons and retract each hoop, starting with the rear hoop and working towards the front. Rotate all retracted hoops to the resting position. Tuck the tent into the base and between the hoops so that no material is left hanging on the ground for transport.**
- **Cover with the Travel Cover\* (an optional but recommended accessory to help prolong the life of the unit). Tow the unit out to your favorite fishing spot! (NOTE: continuous pulling behind an ATV or snowmobile may result in premature wear of the base. We recommend the optional Wear Strips\* be mounted to the base of your Fish Trap).**

**Make sure your Ice Shelter is completely dried out before storing for long periods of time. Store your Ice Shelter in a cool, dry place. Keep away from rodents.**

**\*See our accessory catalog or [www.clamcorp.com](http://www.clamcorp.com) for these items and more!**

## **- Safety Instructions -**

**Please fully understand and follow all safety instructions as outlined. Failure to do so could result in severe injury or death.**

- **Do not use open flame heaters in your ice shelter. Injury or death may result from fire if tent fabric is exposed to open flame. The tent is not fireproof, but the fabric is treated with a fire retardant that meets CPAI-84 specifications. Application of any foreign substance may render the flame retardant properties ineffective. Ice Armor fabric will melt when contact is made with hot surfaces (i.e., heaters).**
- **Death from asphyxiation may result from use of oxygen depleting heaters. Open all vents for fresh air ventilation.**
- **Never leave shelter unattended when set up.**
- **Due to the increase in traffic (snowmobiles, autos, etc.) on area lakes, ice fishing can be hazardous at night. If you choose to fish at night or in poor visibility conditions, be sure to take precautions with lights or reflectors to show drivers your whereabouts. Night time: exterior reflectors must be visible to reduce risk of collisions.**

## **- Warranty -**

**Clam Corporation, Inc. warrants to the original retail purchaser that all Clams are free from manufacturer's defects for one (1) year from the date of the original purchase. Warranty does not cover cracked windows, tent tears, broken or bent hoops due to high wind weather conditions or unattended use. Clam Corporation will replace or repair any part found defective within the one (1) year time limit. All parts must be returned to Clam Corporation, Inc. Before returning any parts, you must first call or write and acquire a return authorization. All returns must be returned postage-prepaid and include the original cash register receipt (date and purchase price).**

**Note: Please write the return authorization number on the outside of the package with the return article to help ensure the transaction gets processed swiftly and accurately.**

## **- Limitation of Liability -**

**It is expressly understood that Clam Corporation liability for its products, whether due to breach of warranty, negligence, strict liability, or otherwise, is limited to the repair of the product as stated above. Clam Corporation is not liable for any injury, loss, damage, or expense, whether direct or consequential, including but not limited to loss of use, income, profit, or damage to material arising in connection with the sale, installation, use of, inability to use, or the repair or replacement of Clam Corporation products. Clam Corporation reserves the right to make alterations or modifications in its products at any time, which in its opinion, may improve the performance and efficiency of the product. It shall not be obligated to make such alterations or modifications to products already in service.**