

Model No.

- 8 2 3 5 -

(p/n 108327)

Specifications

- Height – 75" (24" packed)
- Width - 75 inches
- Length – 144" (45" packed)
- Weight - 175 lbs
- Instruction p/n 102484



- Clam Customer Service Information -

NOTICE!! Once used, this shelter cannot be returned to the store. If you have a warranty claim, have your sales receipt ready and contact Clam Corporation Customer Service by email inquiry or direct by calling:

- Customer Service Hrs: - 9am to 4pm, Mon. - Fri. Central Standard Time
- Clam Corporation
600 Clydesdale Trail
Medina, MN 55340
- Phone - 763-231-4120
- Fax - 763-231-4121
- Website – www.clamcorp.com
- Email – customerservice@clamcorp.com

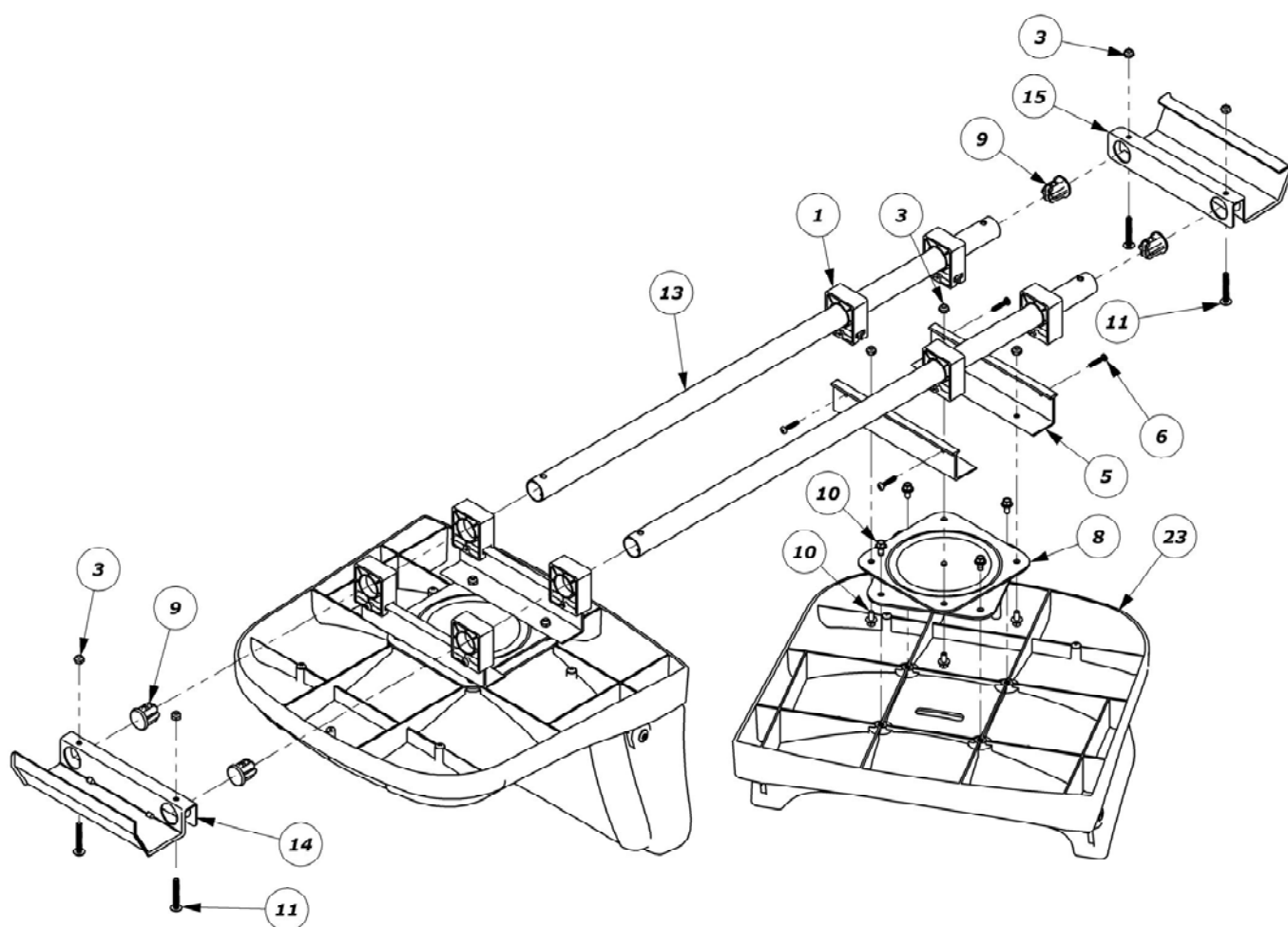


Clam Corporation cannot honor warranty without an original, dated receipt.

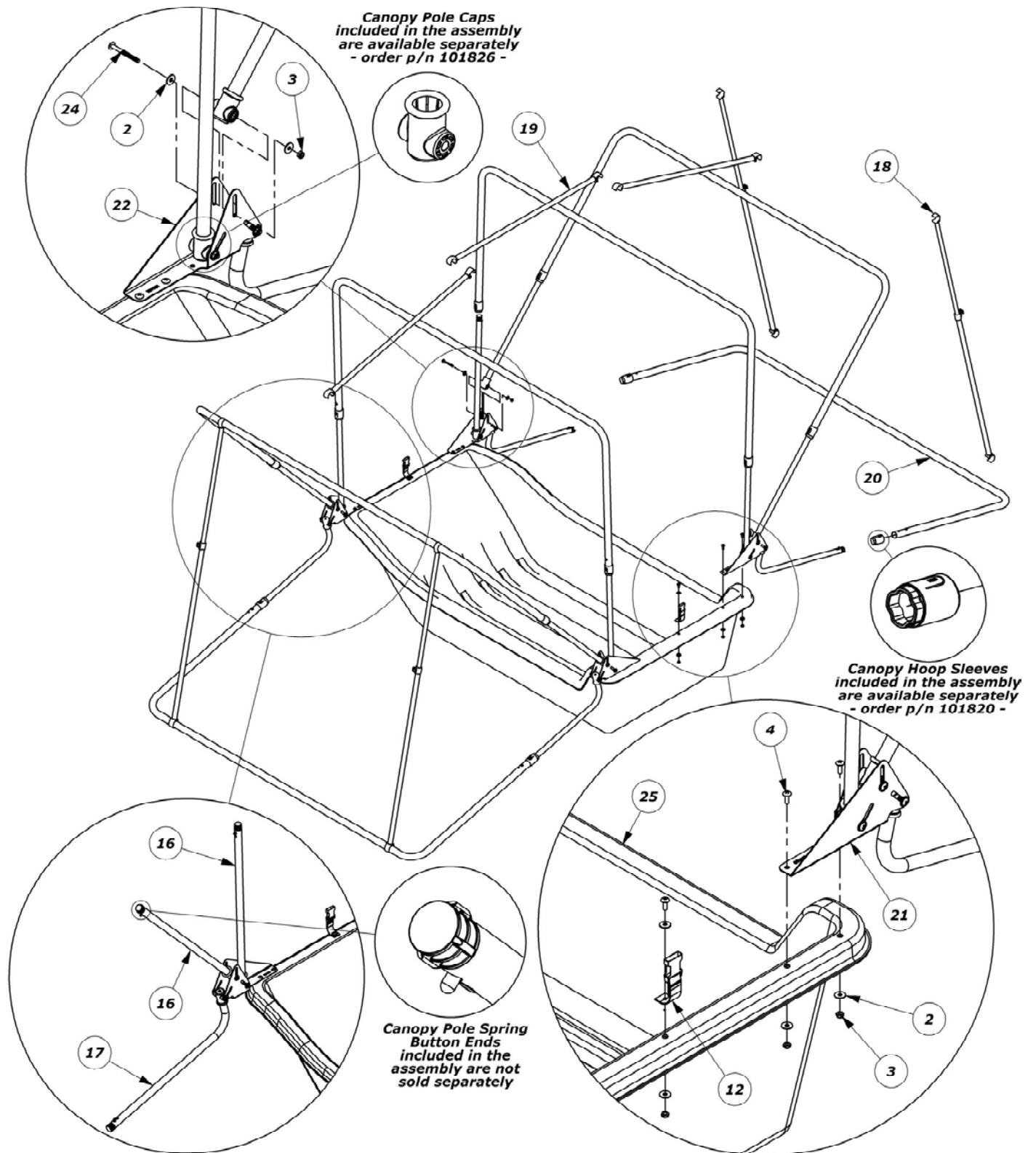
- Parts List -

Item	Qty	p/n	Description
1	16	101048	Slide Block
2	36	101081	1/4" Flat Washer
3	46	101082	1/4" Thin Locknut
4	10	101088	1/4" Dia. X 3/4" Long Phillips Screw
5	8	101146	1-1/2" X 1-3/4" Aluminum Angle X 9" Long
6	16	101147	#10 X 1" Long Phillips Screw
7	1	101249	Tow Rope
8	4	101399	Seat Swivel Assembly
9	8	101429	1-1/8" Dia. Tube Cap
10	32	101470	1/4" Dia. X 1/2" Long Hex Head Screw
11	8	101486	1/4" Dia. X 1-3/4" Long Phillips Screw
12	2	101618	Base Attachment Strap
13	4	101803	1-1/8" Dia. Tube
14	2	101809	Front Seat Bracket
15	2	101817	Rear Seat Bracket
16	8	101829	Straight Canopy Pole
17	4	101830	Bent Canopy Pole
18	4	101836	Front Adjustable Spreader Pole
19	3	101839	Roof Spreader Pole
20	6	101863	Canopy Hoop Pole
21	2	101900	RH Canopy Bracket
22	2	101901	LH Canopy Bracket
23	4	101905	Folding Seat Assembly
24	12	101906	1/4" Dia. X 2-1/2" Long Phillips Screw
25	1	102185	X4 Base
26	1	102438	X4 Tent
27	1	102484	Manual, 08/09 X4

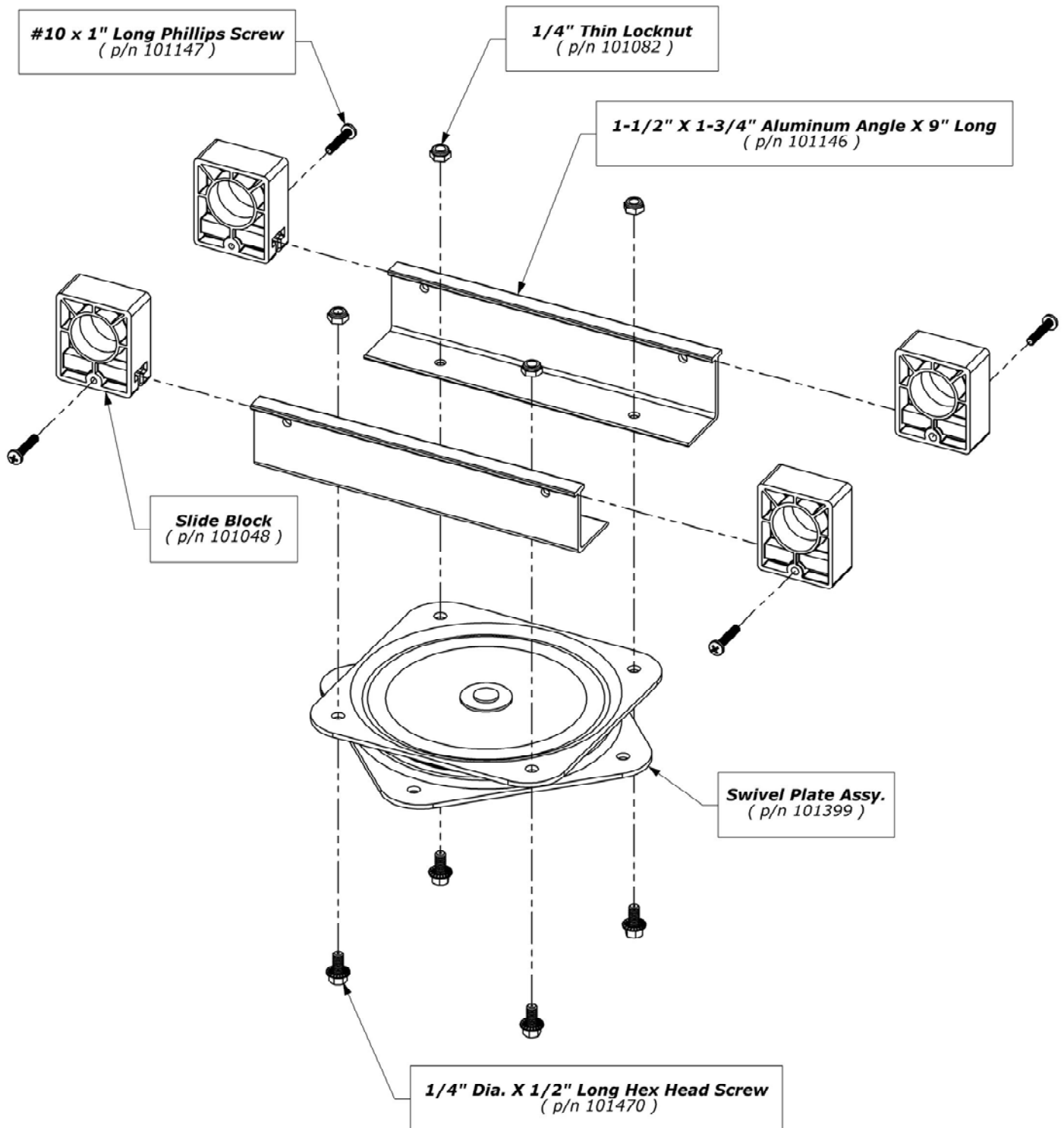
- Parts Diagram (Seating) -



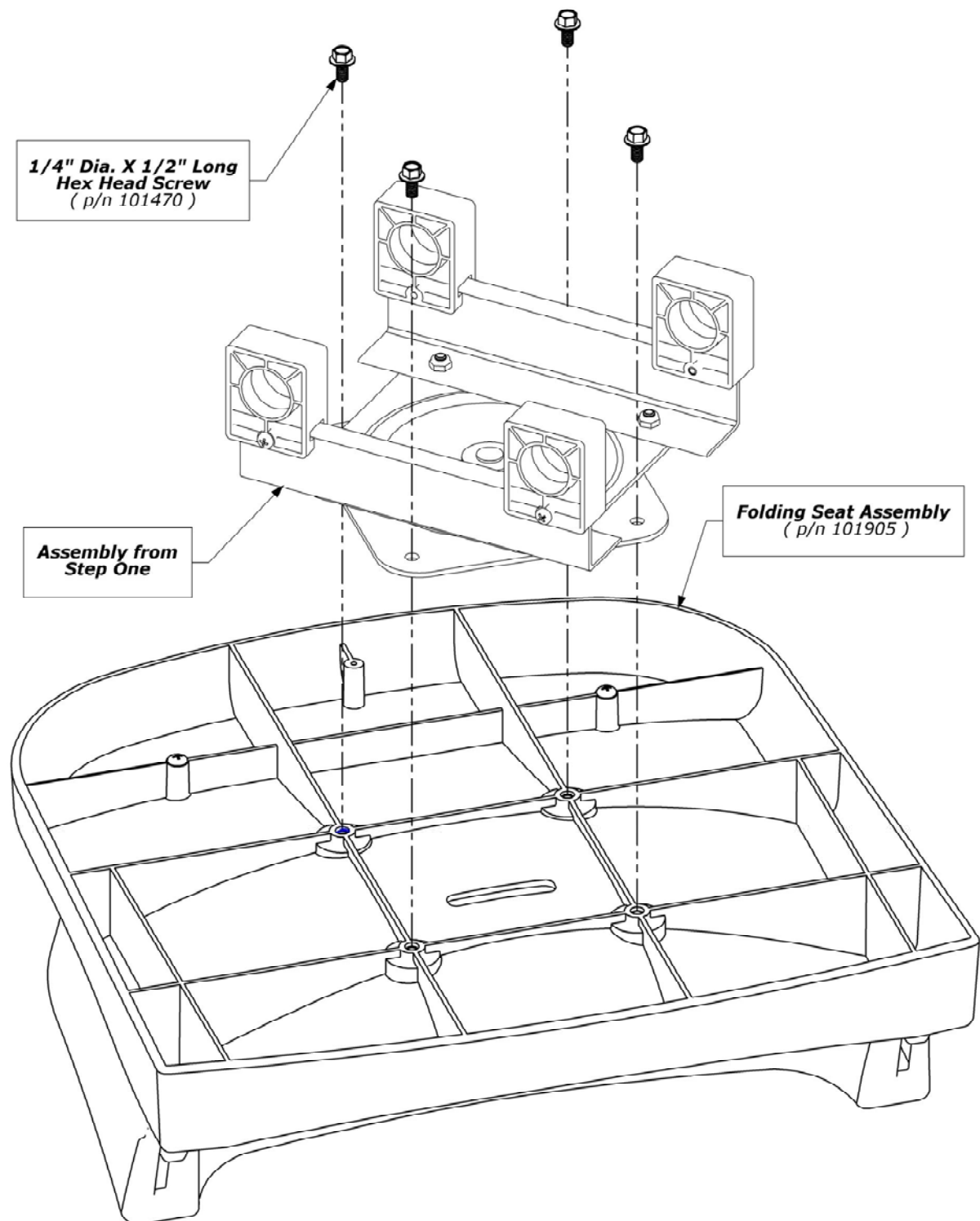
- Parts Diagram (Shelter) -



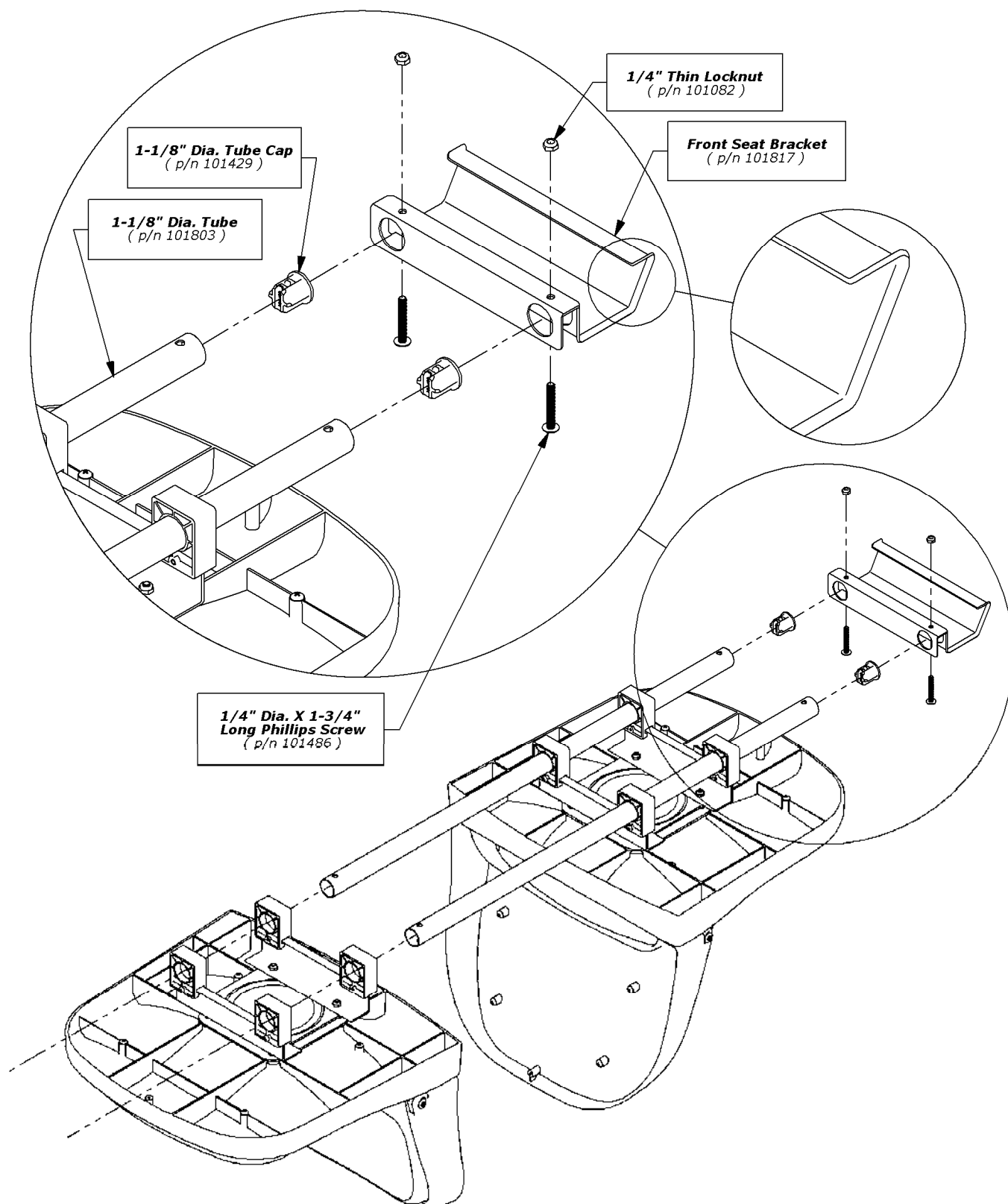
- Step One -



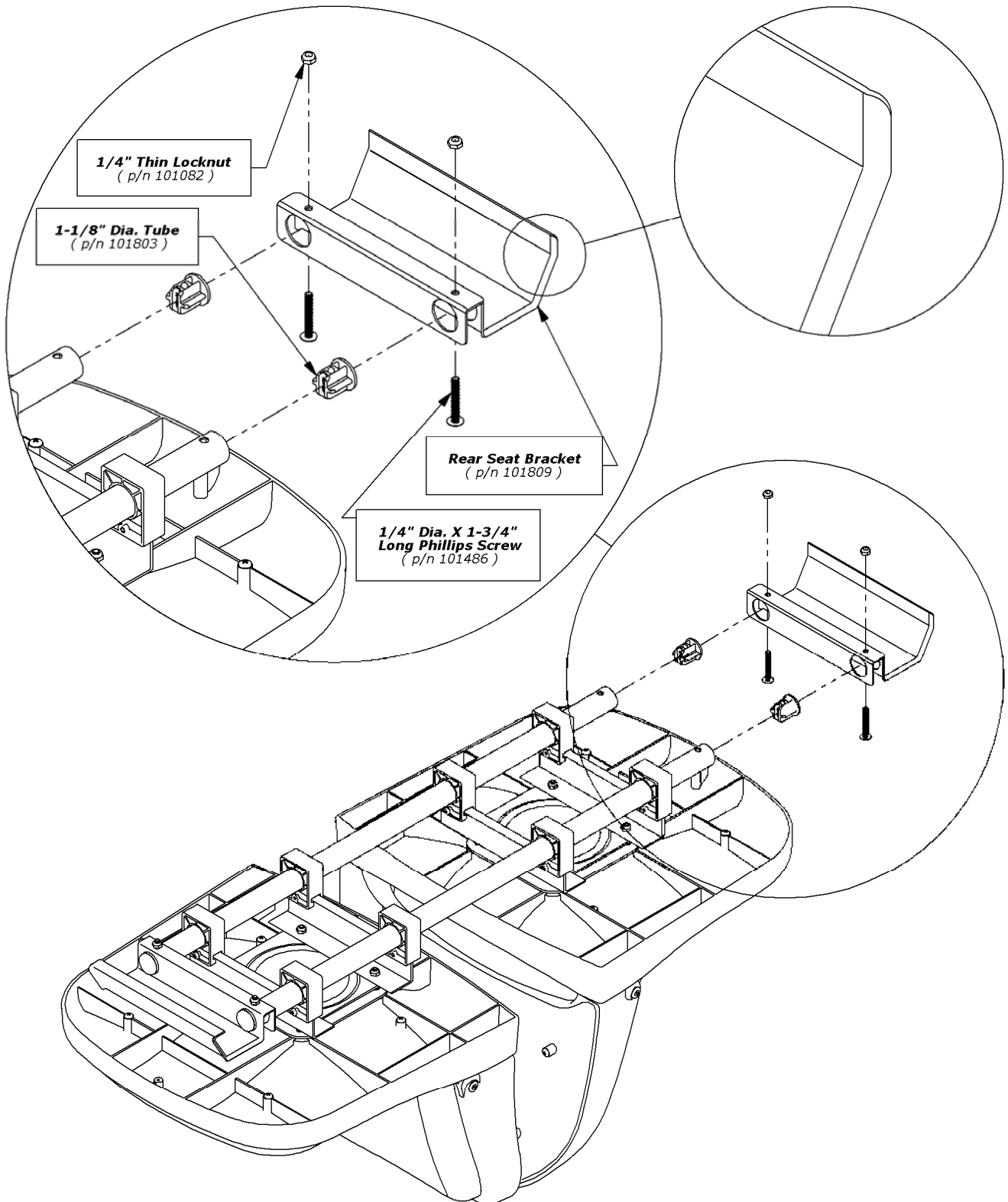
- Step Two -



- Step Three -

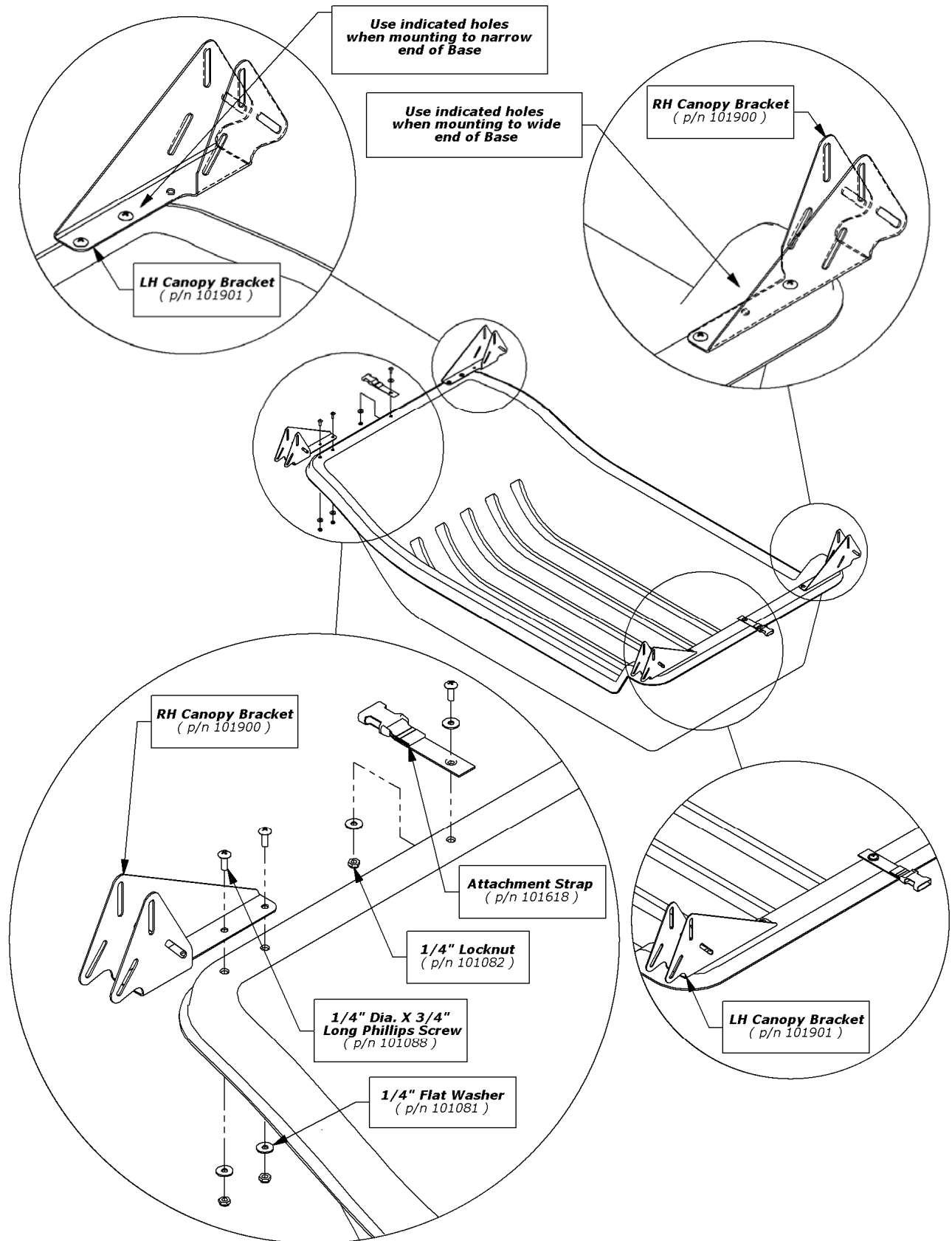


- Step Four -

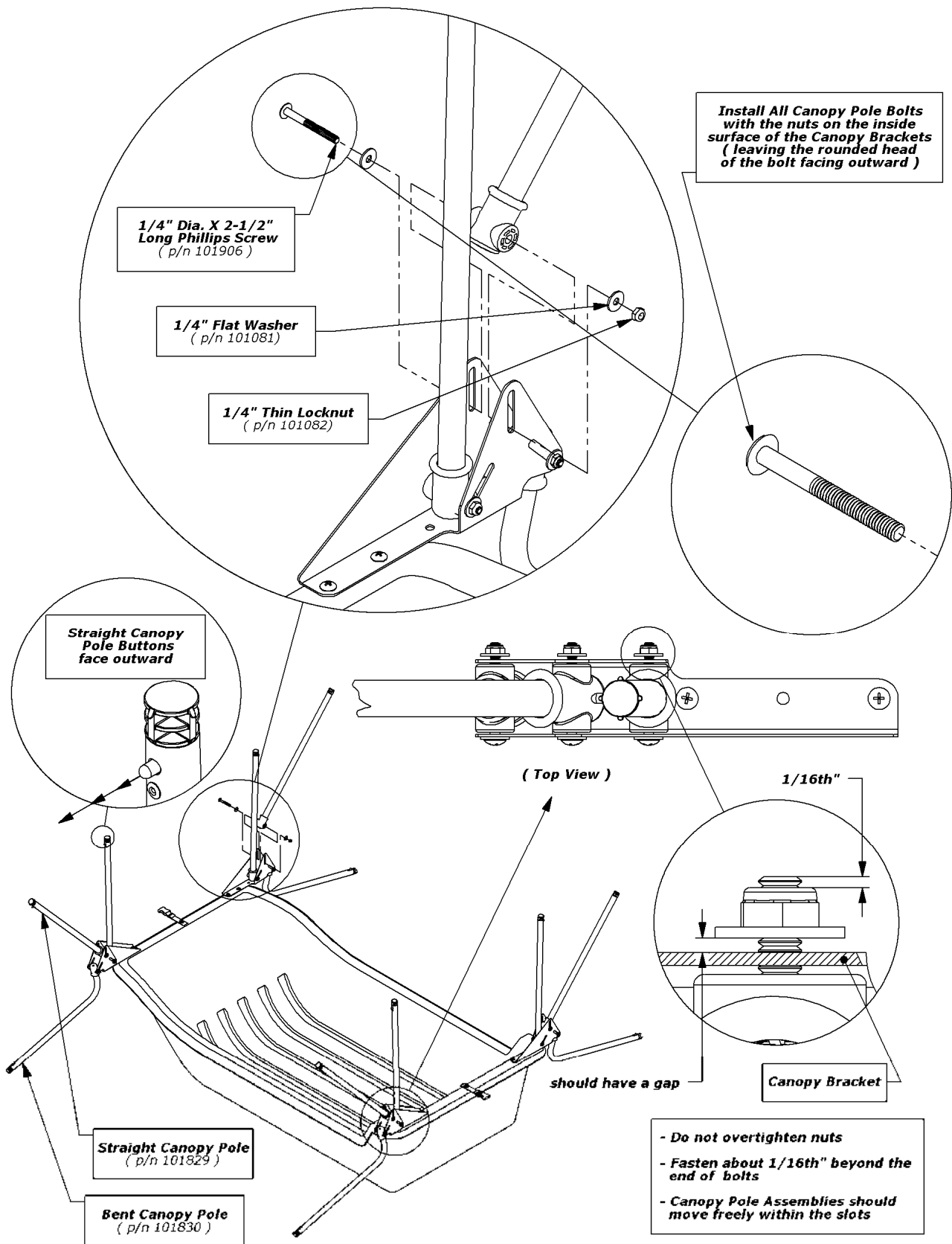


Slide the Tubes of the assembly completed in Step Three through the Slide Blocks of the Seat Assembly completed in Step Two. When the combined assembly is completed, set aside for installation following the shelter assembly.

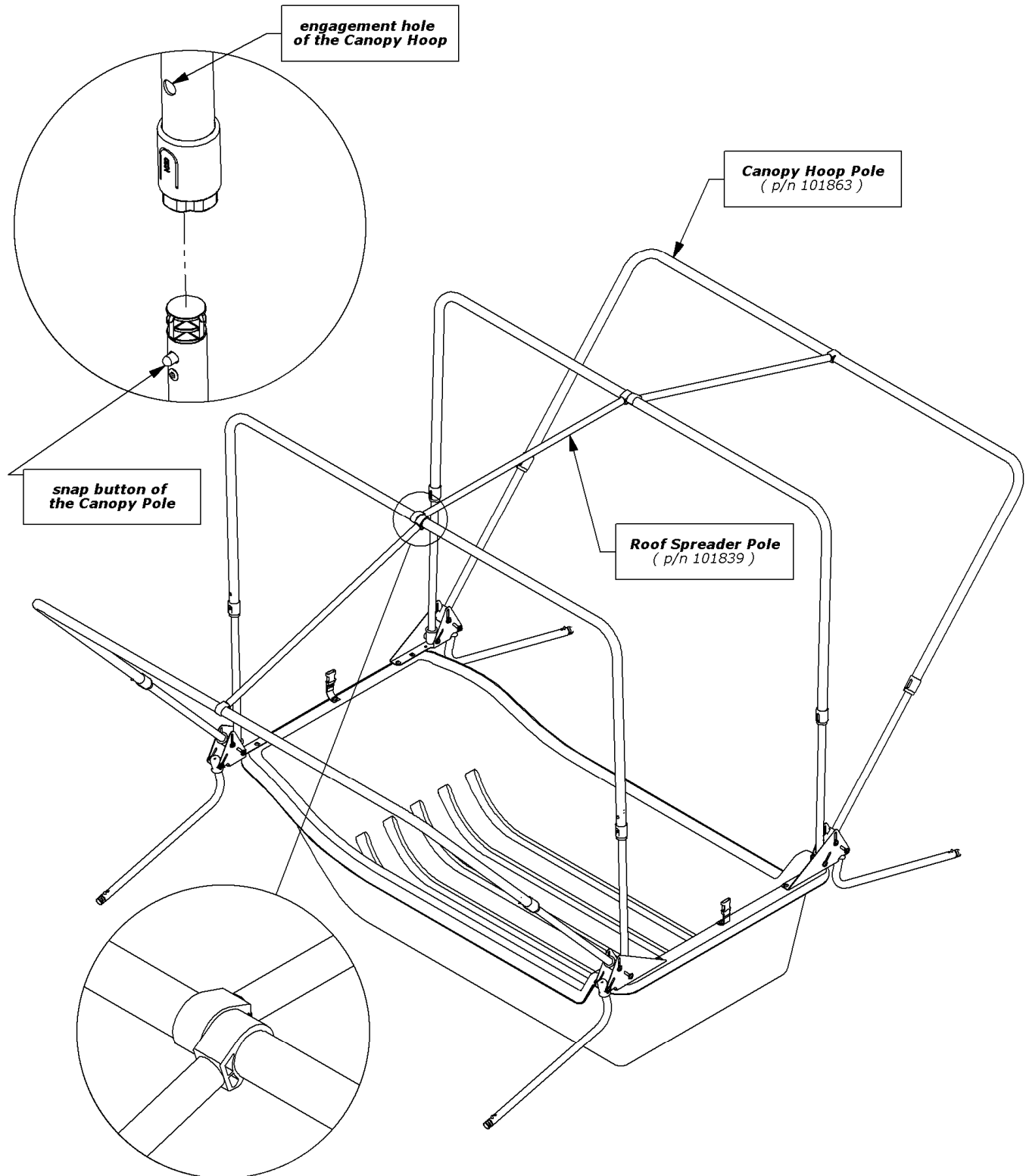
- Step Five -



- Step Six -



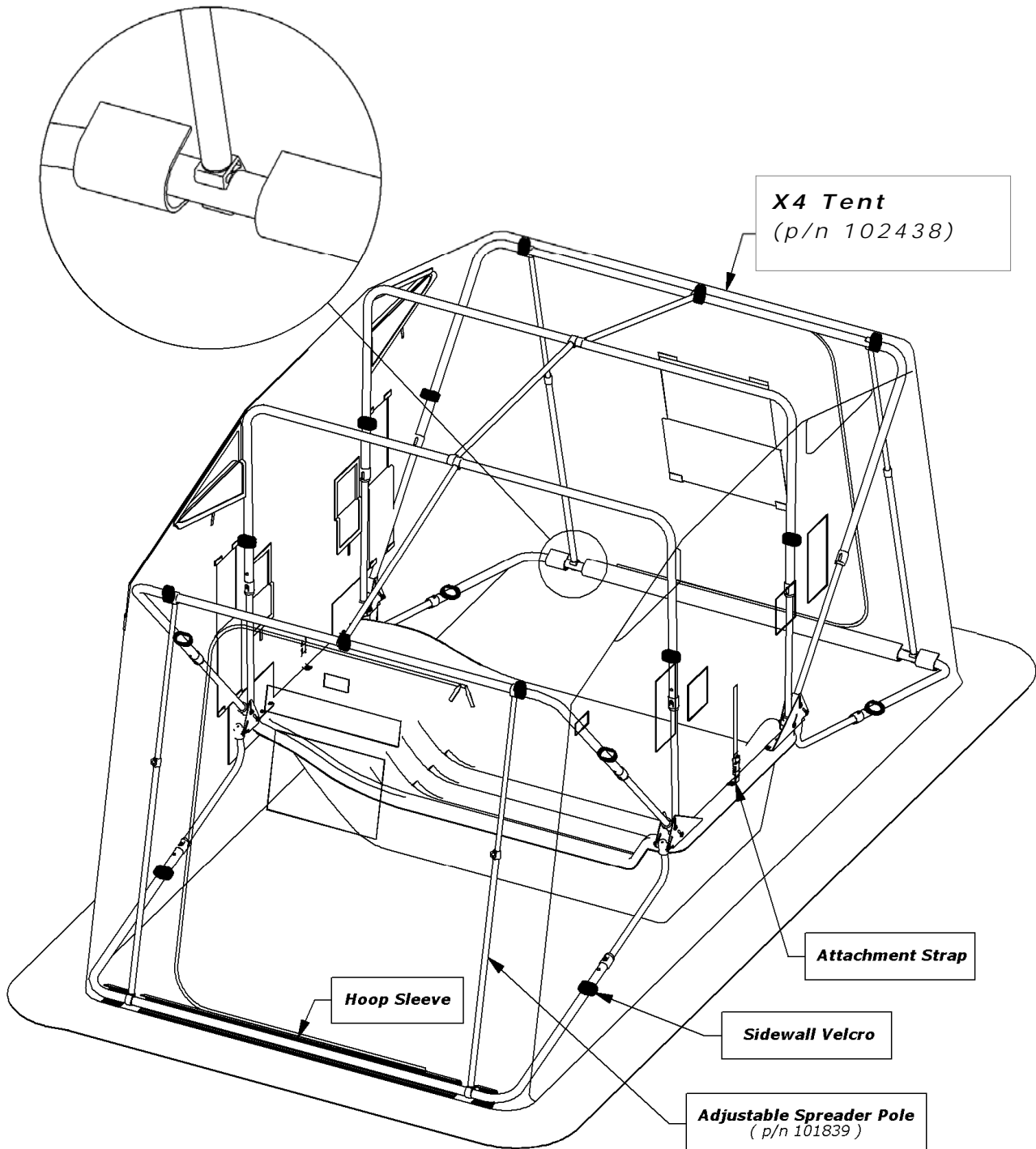
- Step Seven -



Slide the Canopy Hoop Poles onto the Straight Canopy Poles until the snap buttons engage the holes near the ends of each Canopy Hoop Pole.

Support the Canopy Hoop Poles by snapping the Roof Spreader Poles onto the Canopy Hoop Poles. The unit will now be stable enough to drape the tent over the poles.

- Step Eight -

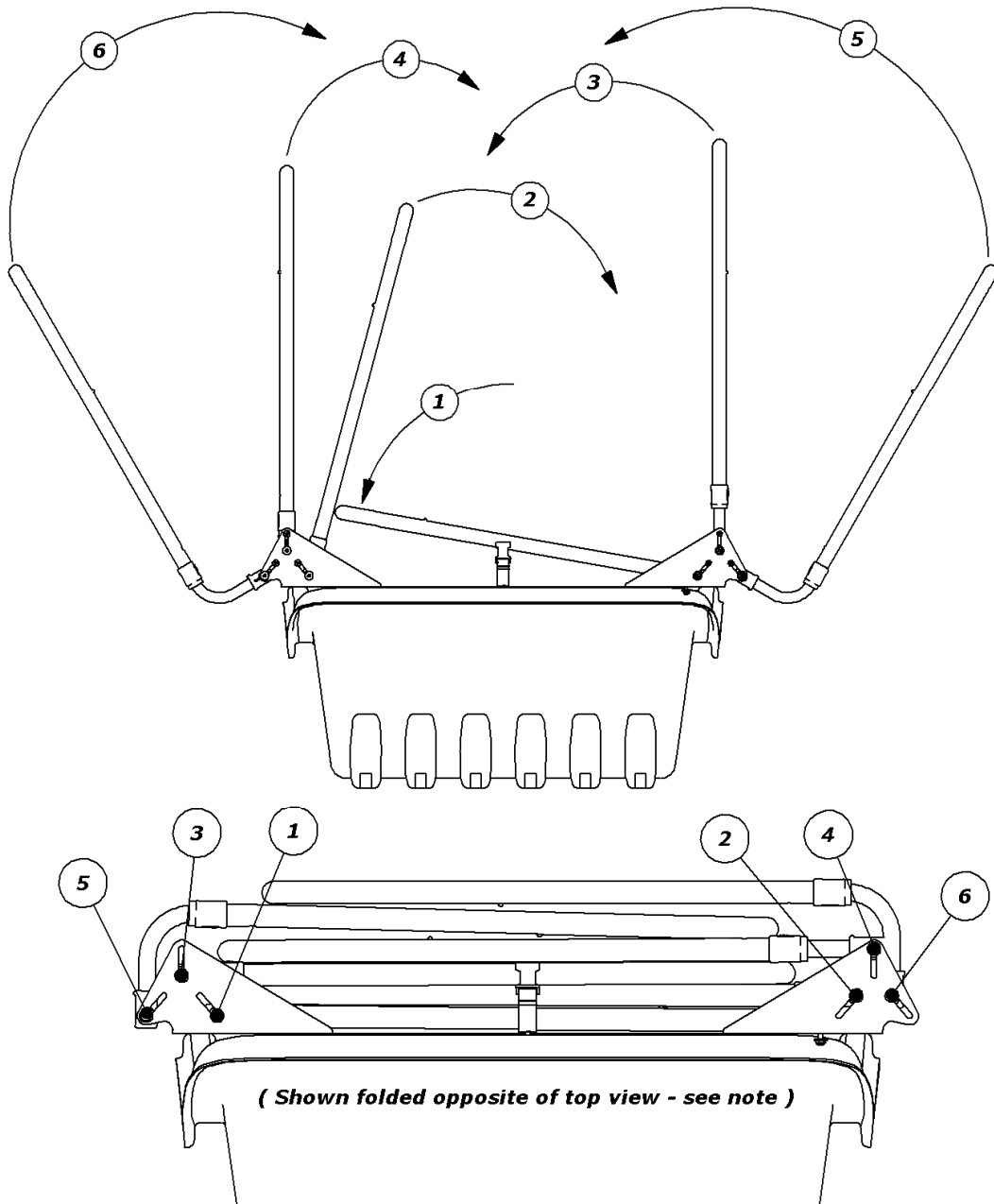


Drape the Tent over the supported hoops then go inside and attach the Roof Velcro.

Next take one of the two remaining Canopy Hoop poles and orient it so that the holes near the ends face upwards and before feeding its length through the Hoop Sleeves sewn on the Tent. Slide the Canopy Hoop Pole onto the Bent Canopy Poles of that side of the shelter, engaging the snap buttons. Do the same on the opposite side of the shelter with the remaining Canopy Hoop Pole.

Install the Front Adjustable Spreader Poles, spreading them out to take the slack out of the Tent. Attach the remaining Sidewall Velcro and fasten the Attachment Straps of each side of the Tent.

- Step Nine -



To collapse the Shelter:

Remove all Spreader Poles and lay them in the bottom of the Sled Base.

Detach the Sidewall Velcro on the inner-most Canopy Hoop Poles and disconnect the Attachent Straps.

Press the snap buttons in and slide each Canopy Hoop Pole in as far as it will go. Then fold down the Poles, starting at the inner most pole on either side, then the inner most pole on the other side, etc. - alternating the sequence of folding from side to side (see numbered sequence above).

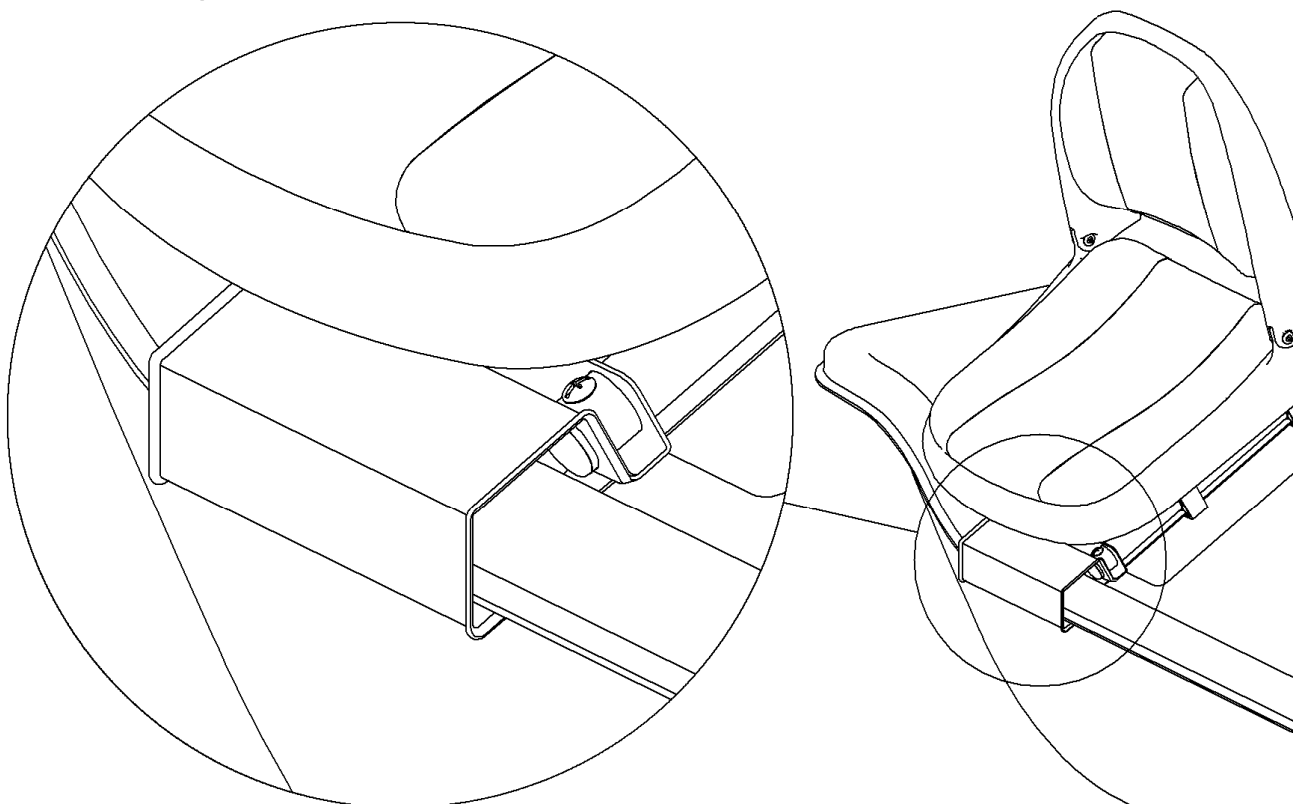
Disconnect the attachments straps on each side of the unit.

Tuck the tent into the Base and between the Poles as best as you can.

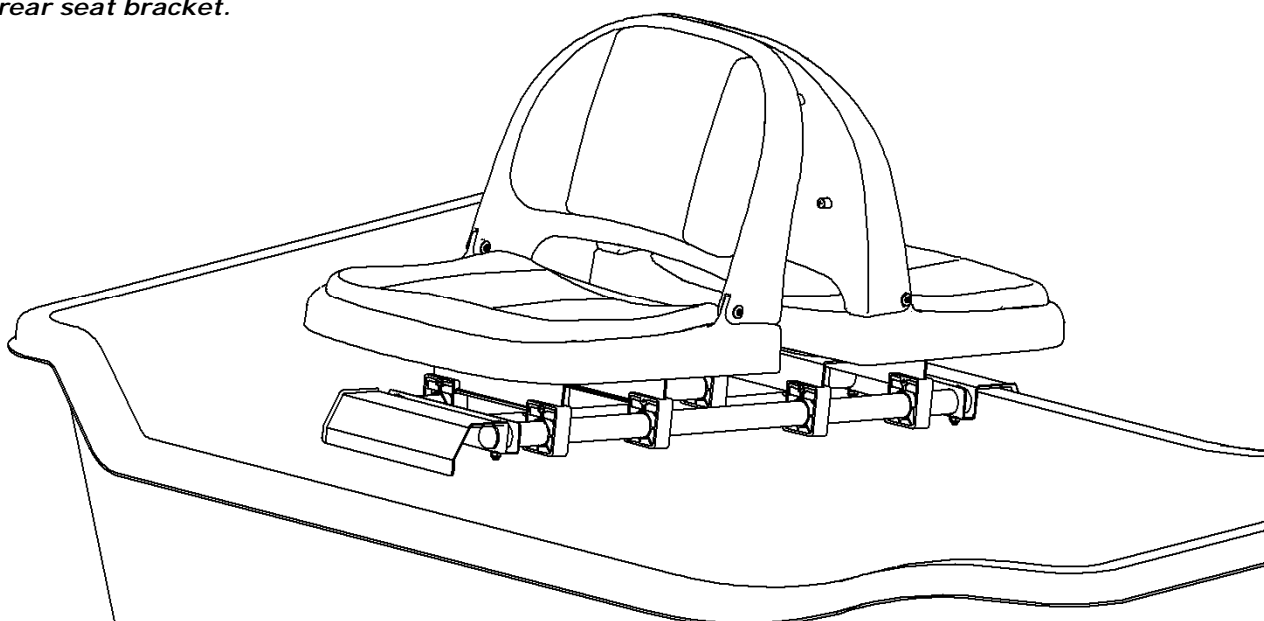
Note: It does not matter on which side you start the folding sequence since both lengths are equal.

- Seating Installation -

Angle the seat assembly slightly while placing the bottom lip of the front seat bracket under the outside edge of the base lip.



Carefully rotate the complete seat assembly down onto the opposite base ledge, capturing the ledge with the rear seat bracket.



- Rope Installation -

Included is a tow rope for those not planning to install the optional tow hitch assembly (available for purchase at www.clamcorp.com). To install the tow rope, drill two 1/2" holes about midway in the sloped front of the base. Knot the ends of the tow rope after routing through the drilled holes.

- Safety Instructions -

Please fully understand and follow all safety instructions as outlined. Failure to do so could result in severe injury or death.

- *Do not use open flame heaters in your ice shelter. Injury or death may result from fire if tent fabric is exposed to open flame. The tent is not fireproof, but the fabric is treated with a fire retardant that meets CPAI-84 specifications. Application of any foreign substance may render the flame retardant properties ineffective. Ice Armor fabric will melt when contact is made with hot surfaces (i.e., heaters).*
- *Death from asphyxiation may result from use of oxygen depleting heaters. Open all vents for fresh air ventilation.*
- *Never leave shelter unattended when set up.*
- *Due to the increase in traffic (snowmobiles, autos, etc.) on area lakes, ice fishing can be hazardous at night. If you choose to fish at night or in poor visibility conditions, be sure to take precautions with lights or reflectors to show drivers your whereabouts. Night time: exterior reflectors must be visible to reduce risk of collisions.*

- Warranty -

Clam Corporation warrants to the original retail purchaser that all Clams are free from manufacturer's defects for one (1) year from the date of the original purchase. Warranty does not cover cracked windows, tent tears, broken or bent hoops due to high wind weather conditions or unattended use. Clam Corporation will replace or repair any part found defective within the one (1) year time limit. All parts must be returned to Clam Corporation. Before returning any parts, you must first call or write and acquire a return authorization number. All returns must be returned postage-prepaid and include the original cash register receipt (date and purchase price).

Note: Please write the return authorization number on the outside of the package to help ensure the transaction gets processed swiftly and accurately.

- Limitation of Liability -

It is expressly understood that Clam Corporation's liability for its products, whether due to breach of warranty, negligence, strict liability, or otherwise, is limited to the repair of the product as stated above. Clam Corporation is not liable for any injury, loss, damage, or expense, whether direct or consequential, including but not limited to loss of use, income, profit, or damage to material arising in connection with the sale, installation, use of, inability to use, or the repair or replacement of Clam Corporation products. Clam Corporation reserves the right to make alterations or modifications in its products at any time, which in its opinion, may improve the performance and efficiency of the product. It shall not be obligated to make such alterations or modifications to products already in service.