

model No.

- 8 2 3 6 -

Specifications

- Height - 68 inches
- Length - 79 inches
- Width - 62 inches
- Weight - 120 lbs.

p/n 108236

Instruction No. 101914



- Clam Customer Service Information -

NOTICE!! - ONCE USED, THIS SHELTER CANNOT BE RETURNED TO THE STORE. IF YOU HAVE A WARRANTY CLAIM, PLEASE CONTACT CLAM CORP. CUSTOMER SERVICE BY EMAIL INQUIREY OR DIRECT BY CALLING:

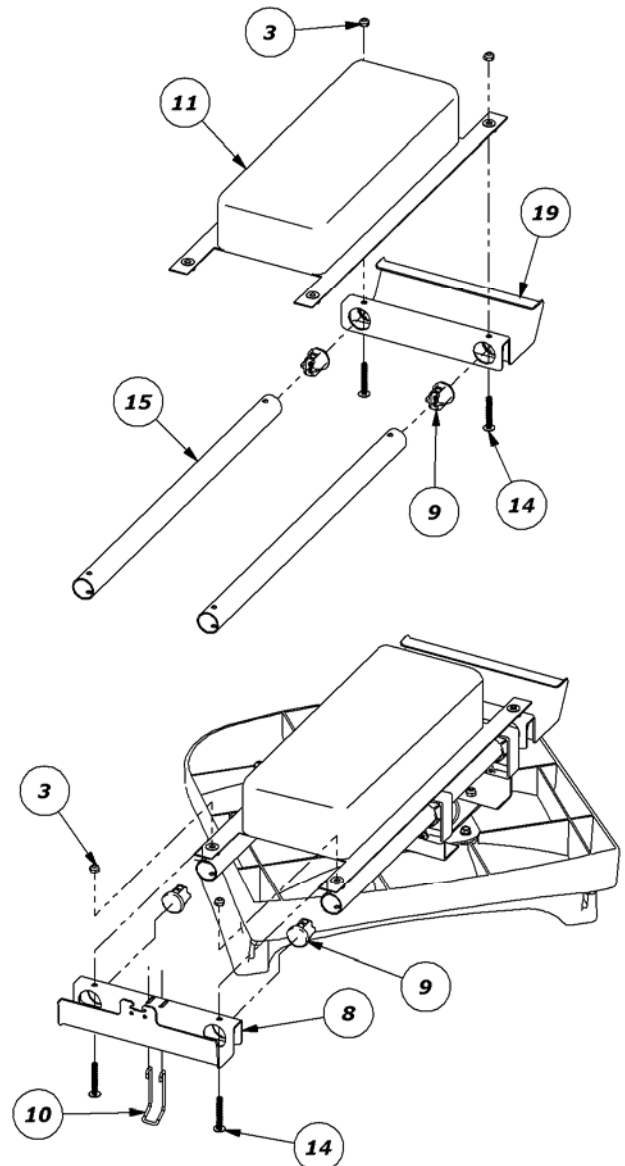
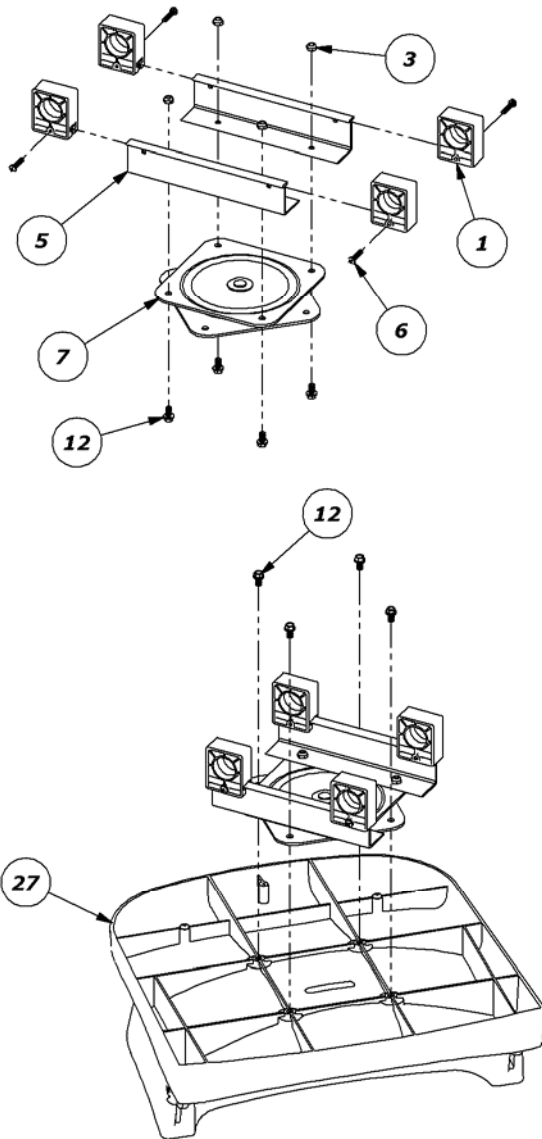
- Customer Service Hrs: - 9am to 4pm, Mon. - Fri. Central Standard Time
- Clam Corporation, Inc.
600 Clydesdale Trail
Medina, MN 55340
- Phone - 763-231-4120
- Fax - 763-231-4121
- Email - customerservice@clamcorp.com
- Website - www.clamcorp.com



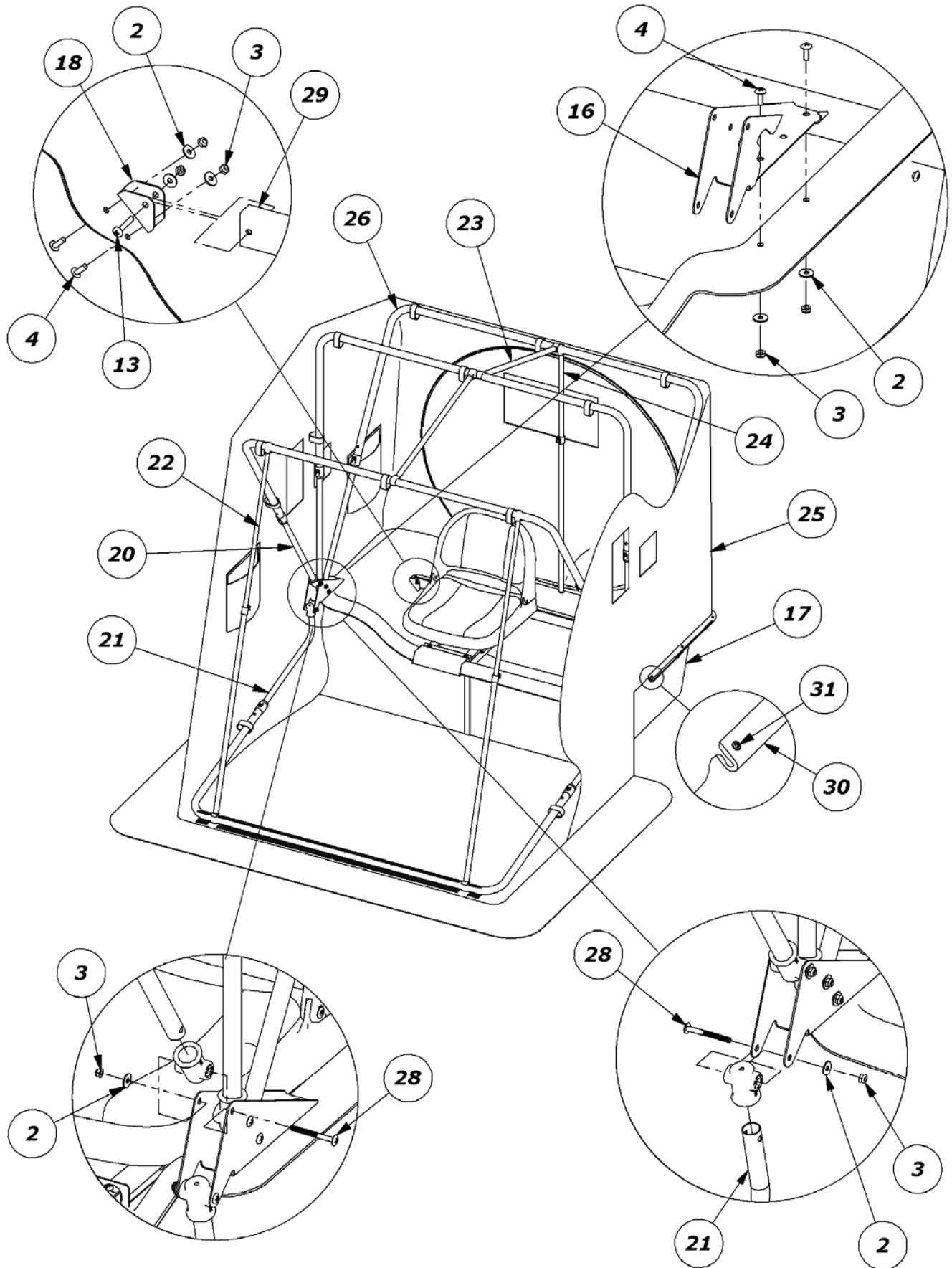
- Bill of Materials -

ITEM	QTY	P/N	DESCRIPTION	ITEM	QTY	P/N	DESCRIPTION
1	4	101048	BLOCK, SLIDE	17	1	101811	BASE, MEDIUM XTR
2	18	101081	WASHER, 1/4" FLAT	18	2	101813	BRKT, RAIL HANGER
3	26	101082	LOCKNUT, 1/4" THIN	19	1	101817	BRKT, FRONT SEAT
4	8	101088	SCREW, 1/4-20 X 0.75 PHILLIPS	20	6	101829	POLE ASSY, STRAIGHT POLE
5	2	101146	ANGLE, 9" LONG ALUMINUM ANGLE	21	2	101830	POLE ASSY, BENT CANOPY
6	4	101147	SCREW, #10 X 1" LONG PHILLIPS	22	2	101836	POLE ASSY, FRONT SPREADER
7	1	101399	PLATE, 6" SQUARE SWIVEL	23	1	101840	POLE ASSY, REAR SPREADER
8	1	101424	BRKT, REAR SEAT	24	1	101842	TENT, X
9	4	101429	CAP, 1-1/8" TUBE	25	4	101862	POLE ASSY, CANOPY HOOP
10	1	101442	CLIP, LATCH	26	2	101864	POLE ASSY, ROOF SPREADER
11	1	101466	HAMMOCK, CLOTH ACCESSORY	27	1	101905	SEAT ASSY, TWO-TONE
12	8	101470	BOLT, 1/4" DIA HEX HEAD BOLT X 1/2"	28	8	101906	SCREW, 1/4" DIA X 2-1/2" PHILLIPS
13	2	101473	SCREW, 1/4" DIA X 1-1/2" PHILLIPS	29	1	101907	TUBE, MED XTR SEAT RAIL
14	4	101486	SCREW, 1/4" DIA X 1-3/4" PHILLIPS	30	1	101909	MOLDING, U-CHANNEL
15	2	101652	TUBE, 1-1/8" DIA	31	20	101938	SCREW, #8 PHILLIPS
16	2	101810	BRKT, XTR CANOPY				

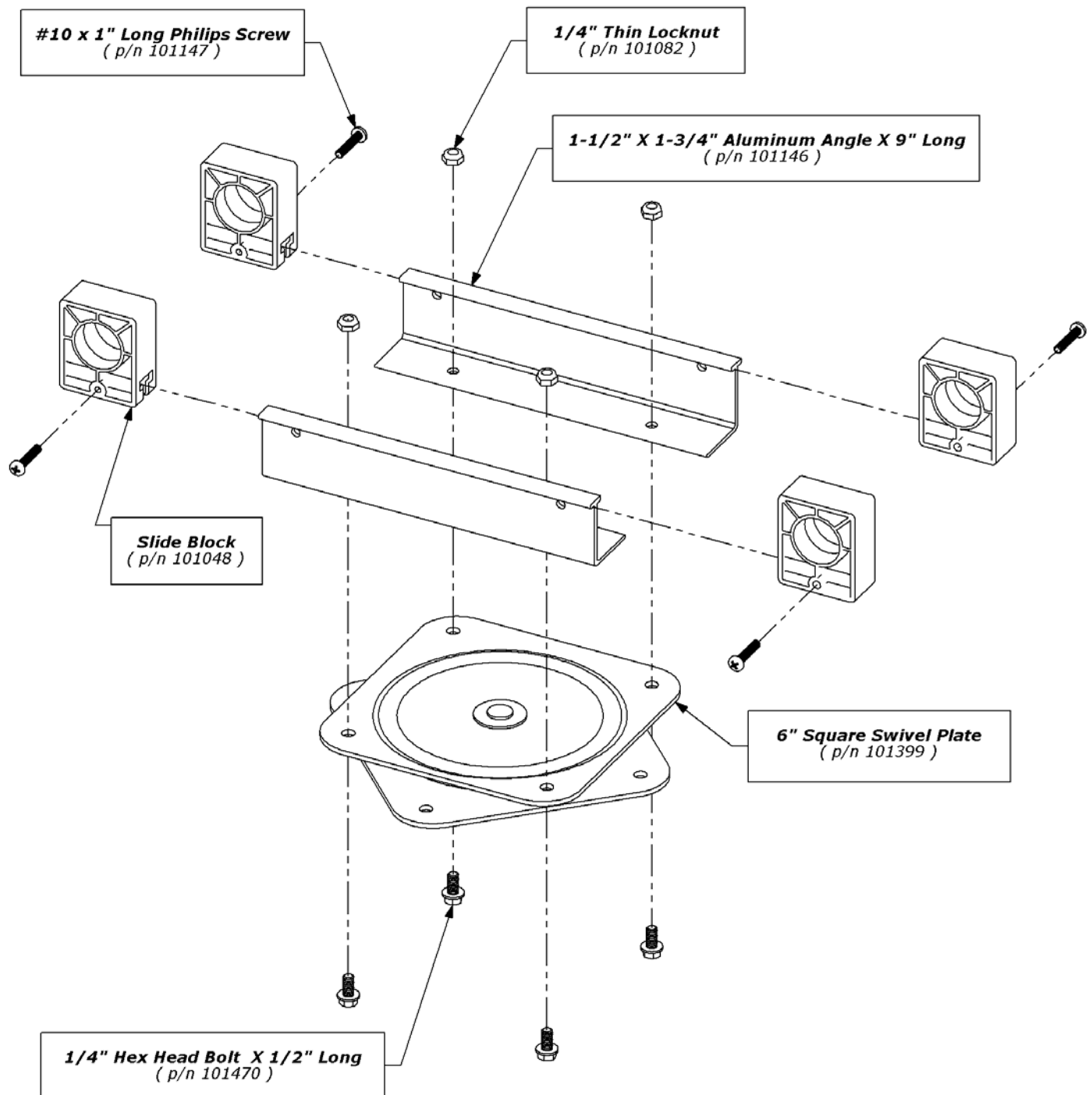
- Seat Parts Diagram (See pg. 4 for Assembly) -



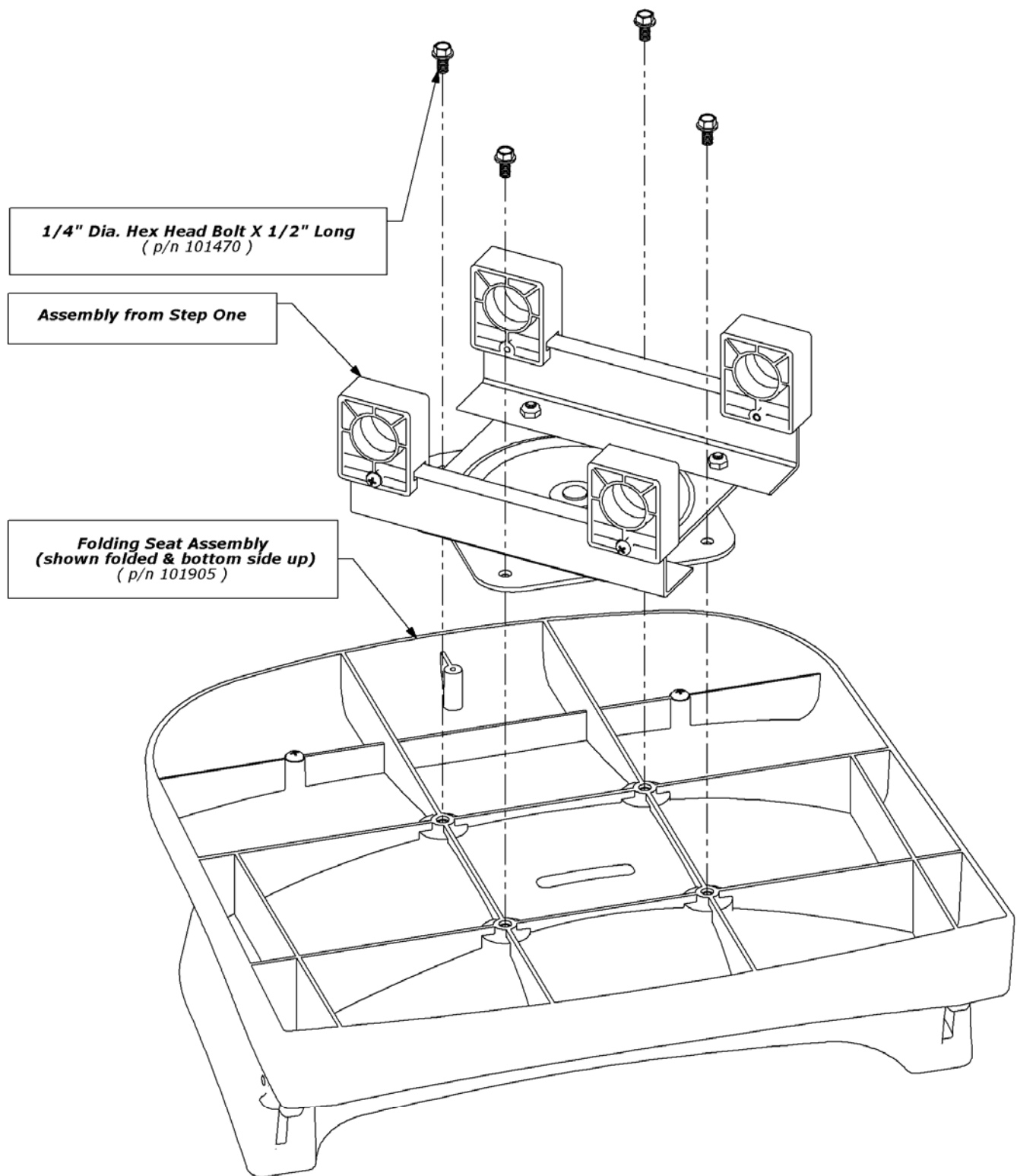
- Shelter Parts Diagram (See pg. 4 for Assembly) -



- Step One -

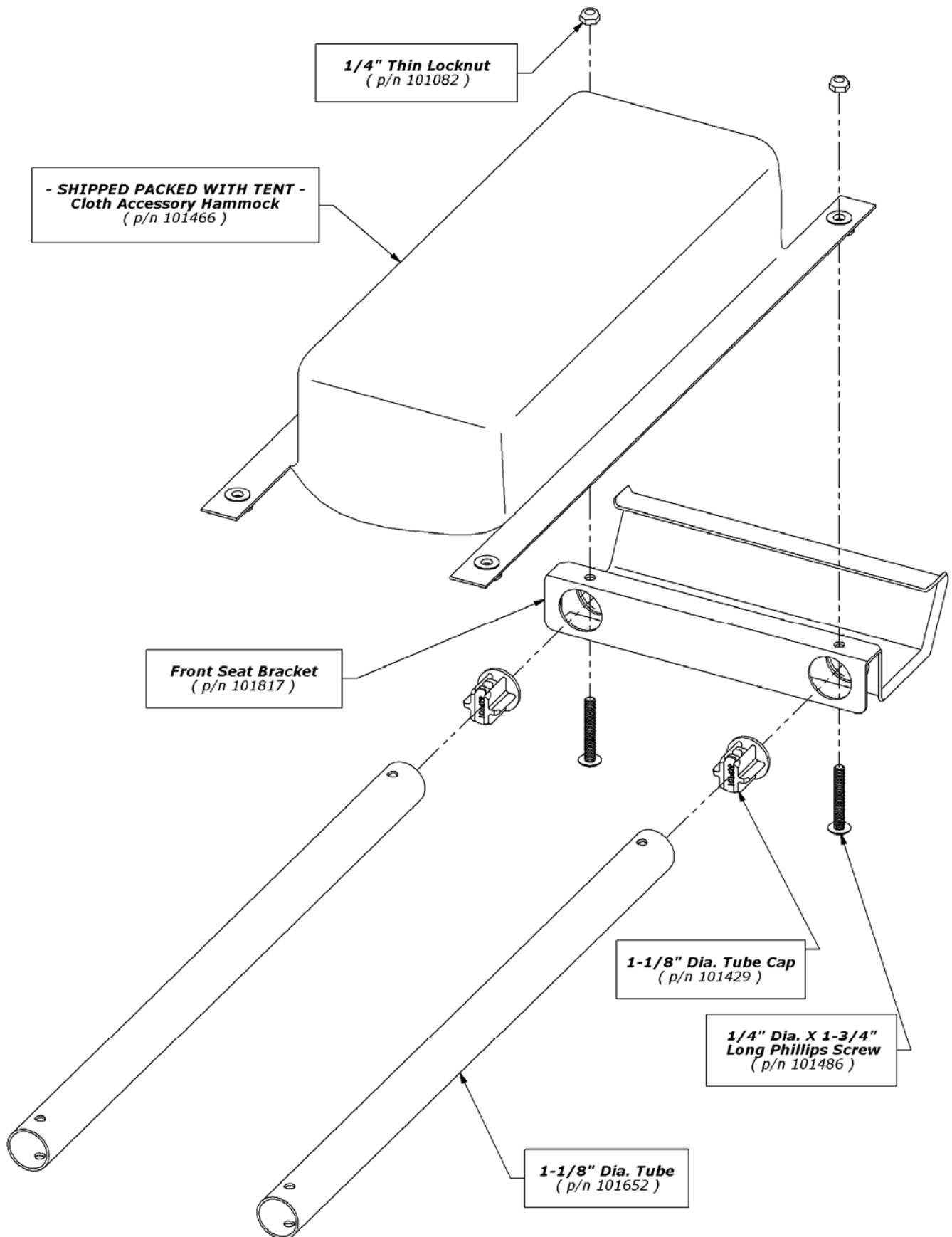


- Step Two -

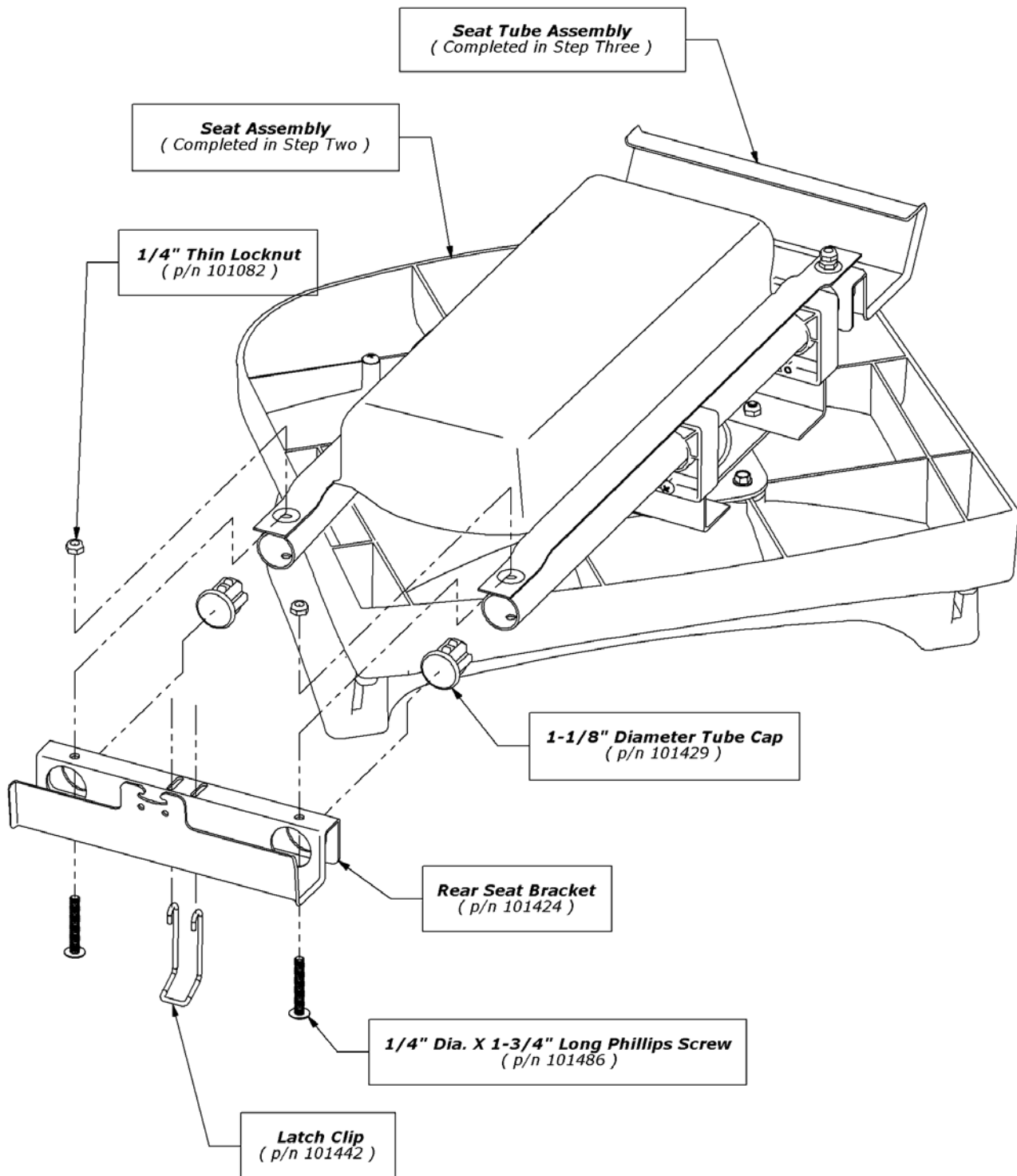


When completed, set Seat Assembly aside for use in Step Four

- Step Three -

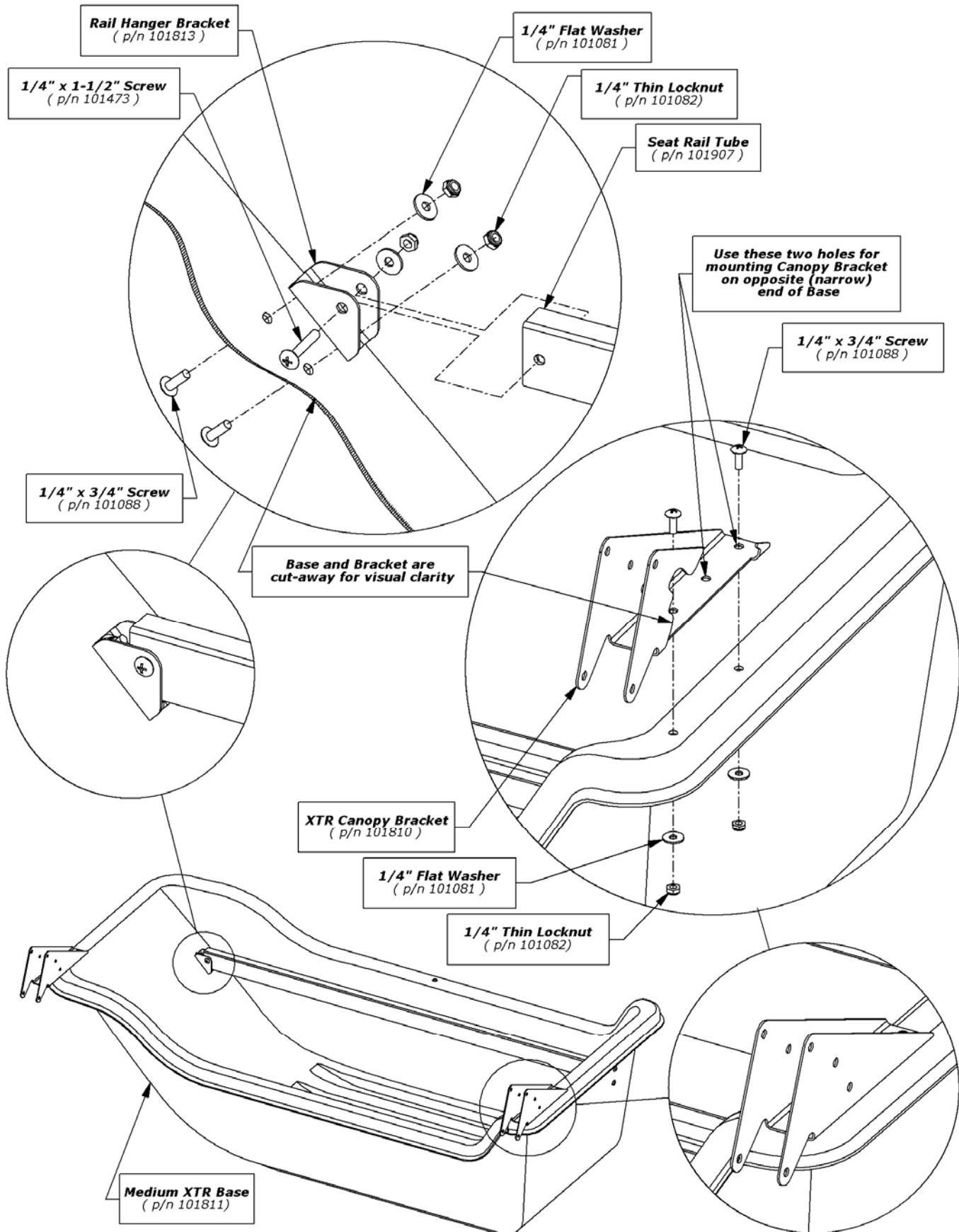


- Step Four -

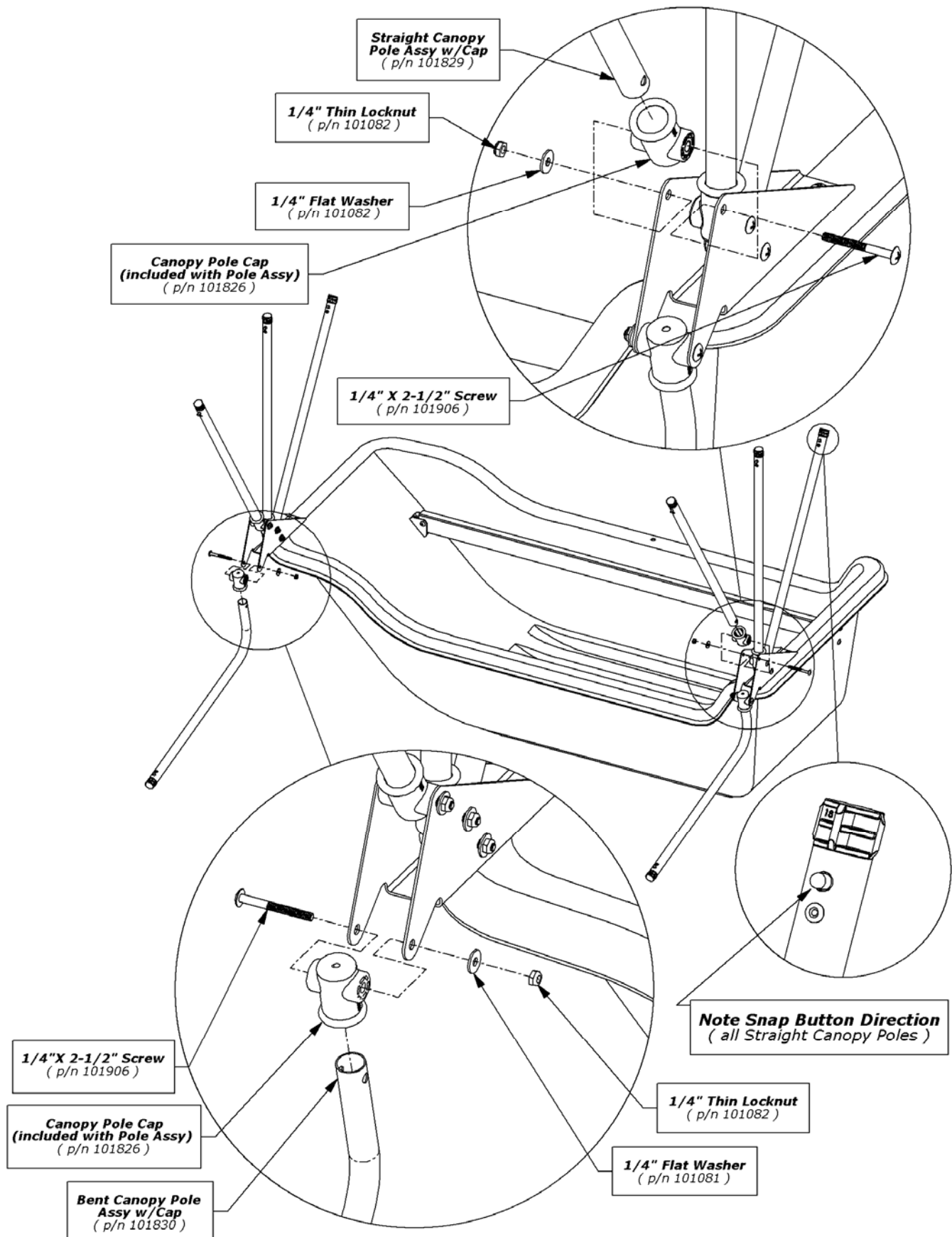


Slide the Tubes of the assembly completed in Step Three through the Slide Blocks of the Seat Assembly completed in Step Two. When the combined assembly is completed, set aside for installation following the shelter assembly.

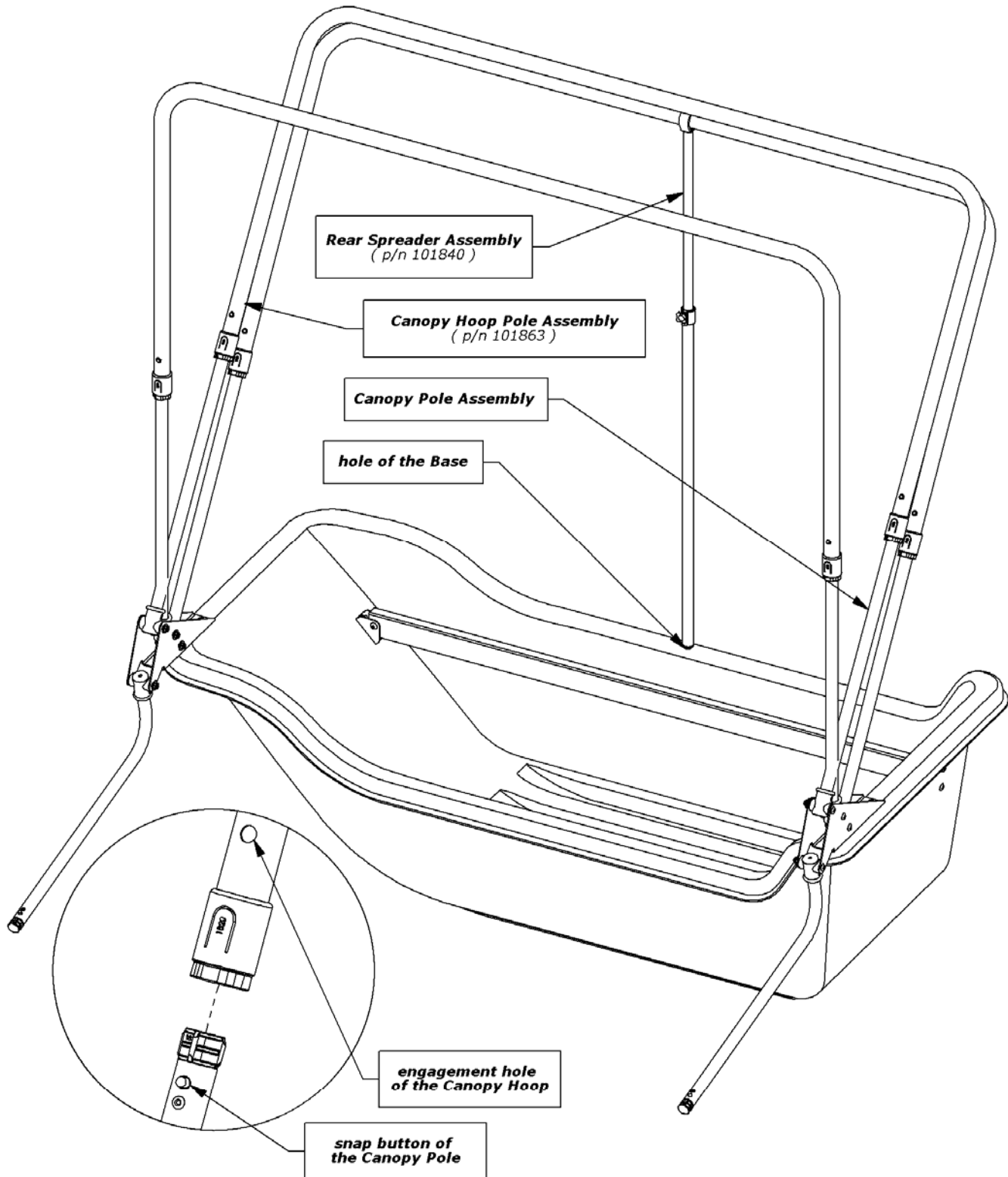
- Step Five -



- Step Six -



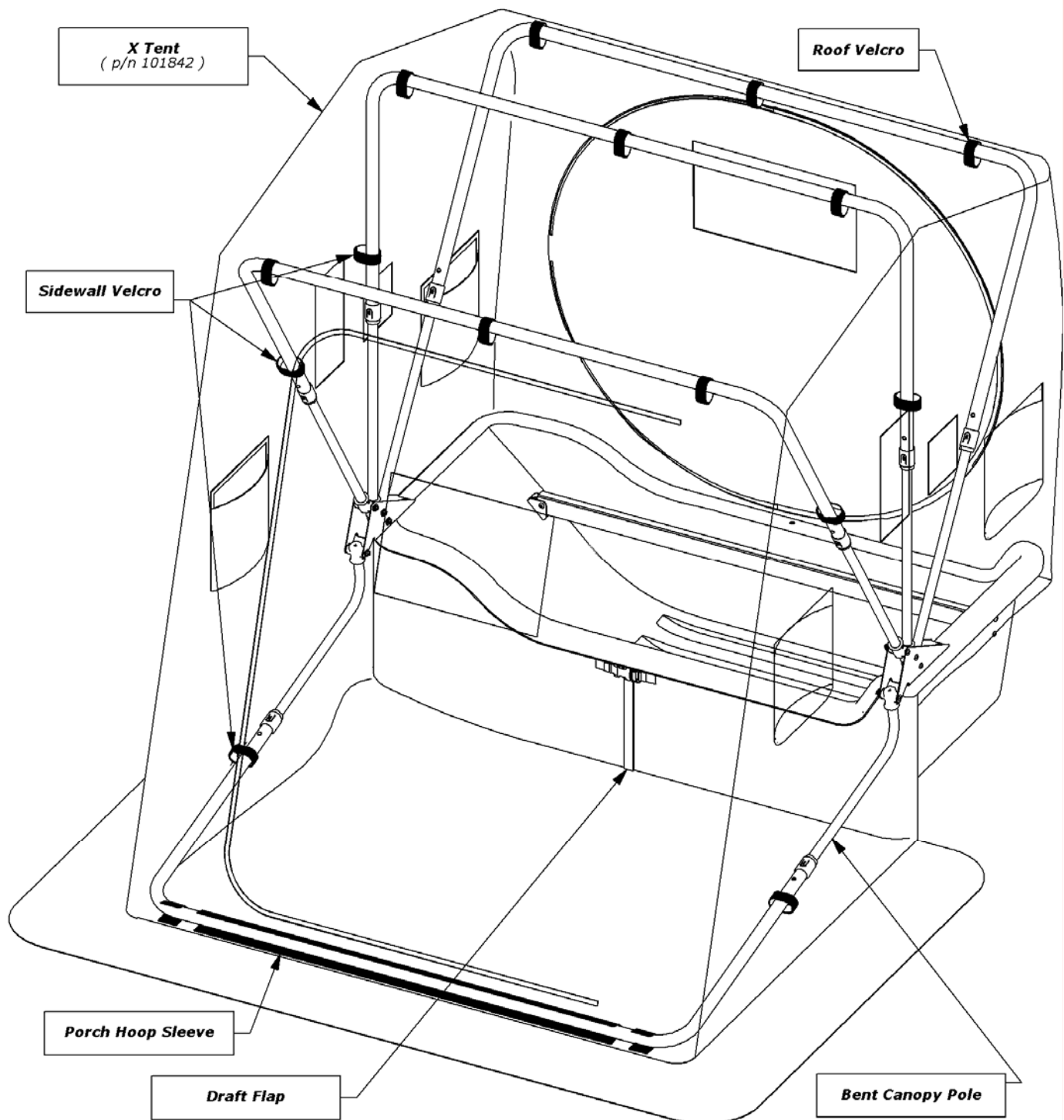
- Step Seven -



Slide the Canopy Hoop Poles onto the Straight Canopy Poles until the snap buttons engage the holes near the ends of each Canopy Hoop Pole.

Extend the Rear Spreader Pole about 12 inches and tighten the tension knob. Next Poke the tip of the Rear Spreader Pole into the hole of the Base and use to temporarily support the Canopy Hoop Poles as pictured.

- Step Eight -



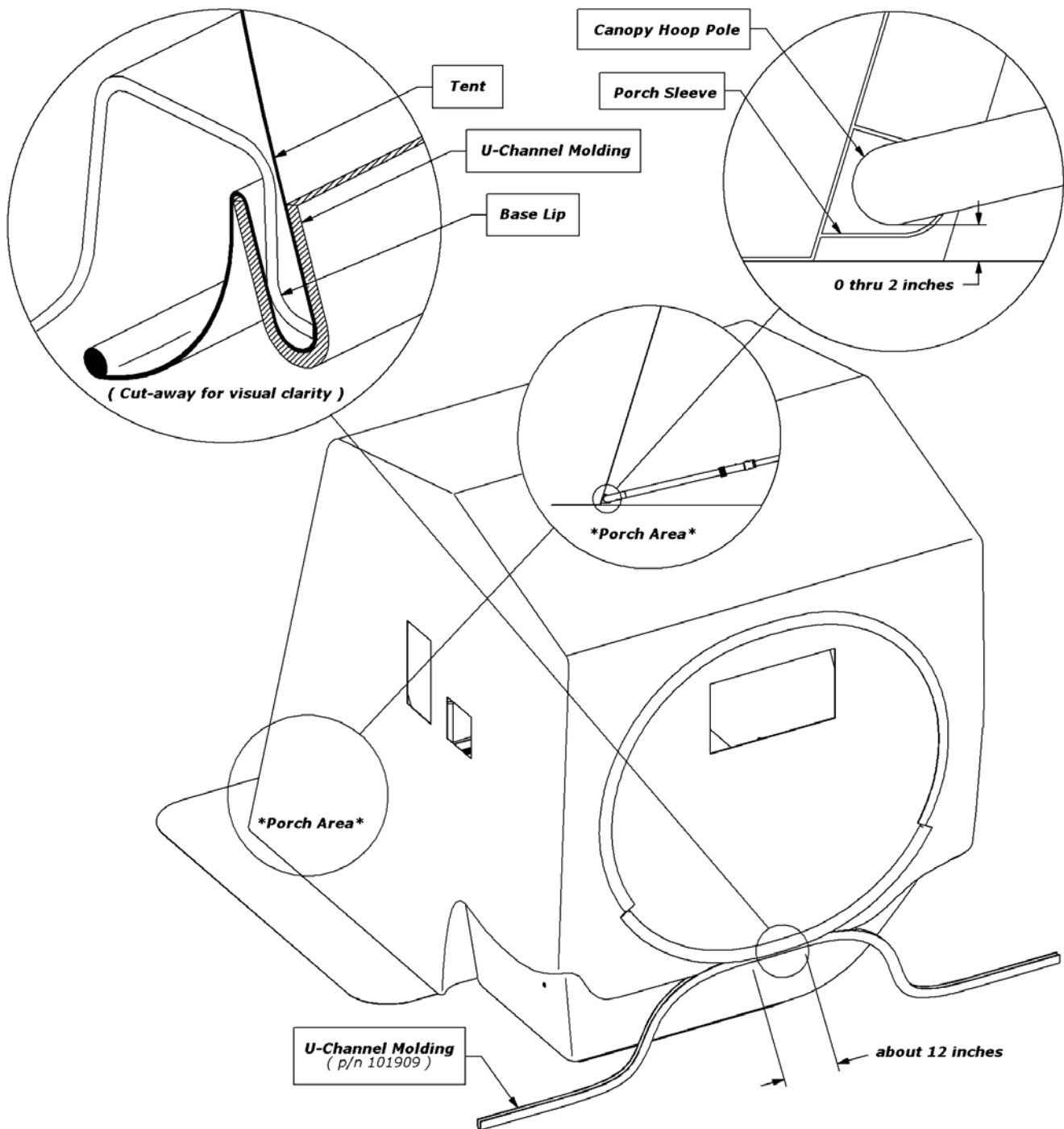
Drape the Tent over the supported hoops from the last step, then go under the Tent and spread out the Canopy Hoop Poles and then attach the Roof Velcro as you go. When completed, lay the attached Canopy Hoop Poles down onto the base.

Take the not-installed Canopy Hoop Pole and prepare to feed the length of the pole through the Porch Hoop Sleeves sewn on the Tent (under the front door). Determine the correct orientation for the holes of the Canopy Hoop Pole so that they will mate properly with the snap buttons of the Bent Canopy Poles. Next slide Canopy Hoop Pole through the Sleeve and then engage the snap buttons as you did in the prior step.

Gather the ends of the Draft Flap and pull them together, stretching its length against the sidewall of the base. Secure the Draft Flap buckle and then align and attach the Velcro at the ends of the Draft Flap. Next attach the Sidewall Velcro on each side of the Tent.

With the Tent now secured at all Velcro locations, remove the Rear Spreader Pole that was used to temporarily support the Canopy Hoop Poles. The Tent can now be "set" in the next step.

- Step Nine -

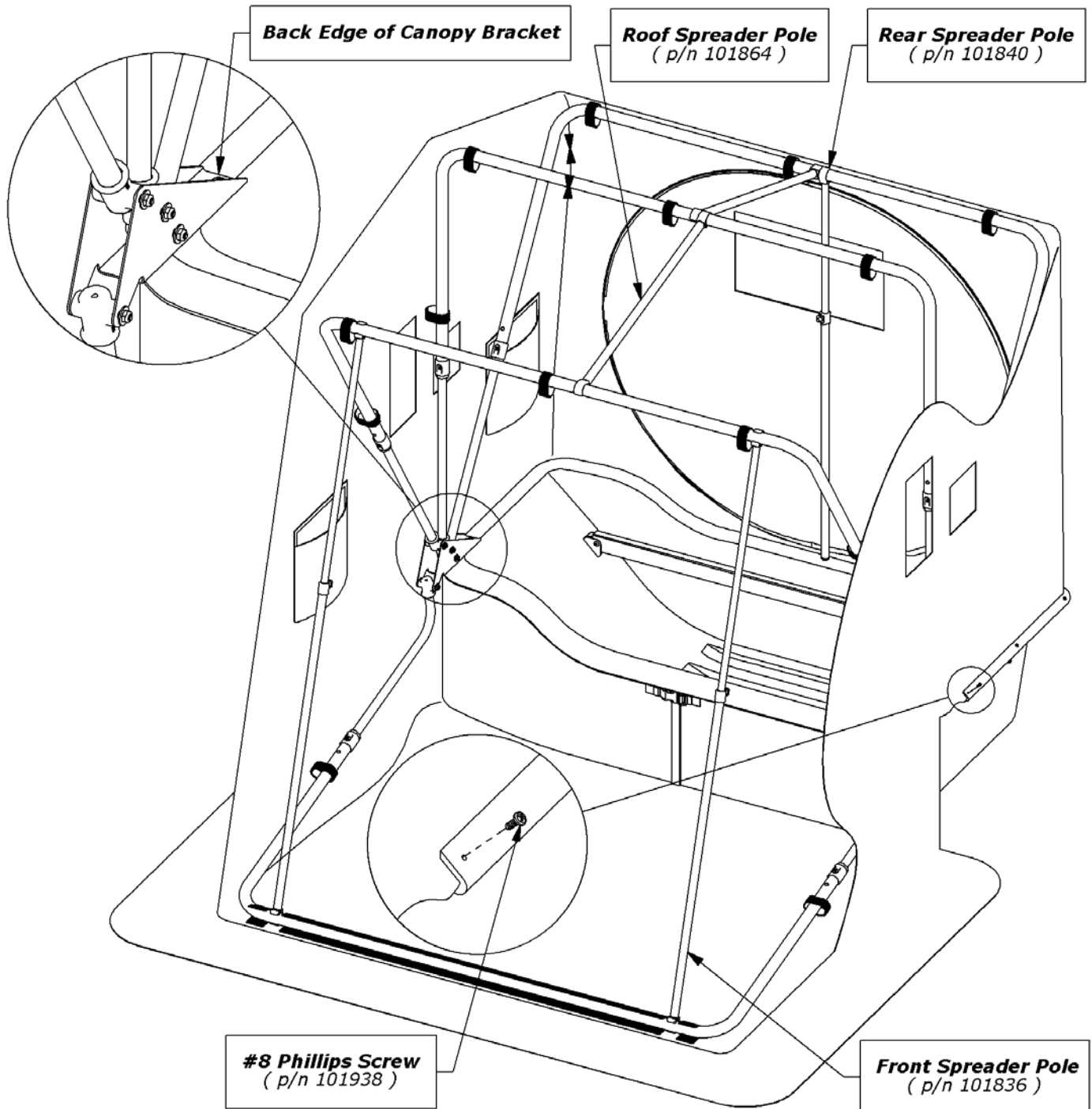


To "set" the Tent, grasp the Tent material at the rear of the shelter and pull it downward. Observe the *Porch Area* of the tent lifting accordingly as you pull. When the U-Channel Molding is correctly installed, the first Canopy Hoop Pole will lightly touch the floor (or will measure anywhere from 0-2 inches).

To achieve this condition, start by finding the center of the Molding. From behind the unit, pull the mid-point of the Tent downward and fold the Tent material under the Base Lip. Press the midpoint of the Molding over the Tent material and the Base Lip. Continue pressing outward from the mid-point in both directions until you have secured about twelve inches of material to the base.

Having temporarily secured the tent to the base, verify the proper position of the Canopy Hoop Pole at the front of the shelter. If the position is not within the recommended measurement, readjust the molding position and then recheck until the proper positioning is achieved. Complete the installation of the U-Channel Molding in the next step.

- Step Ten -



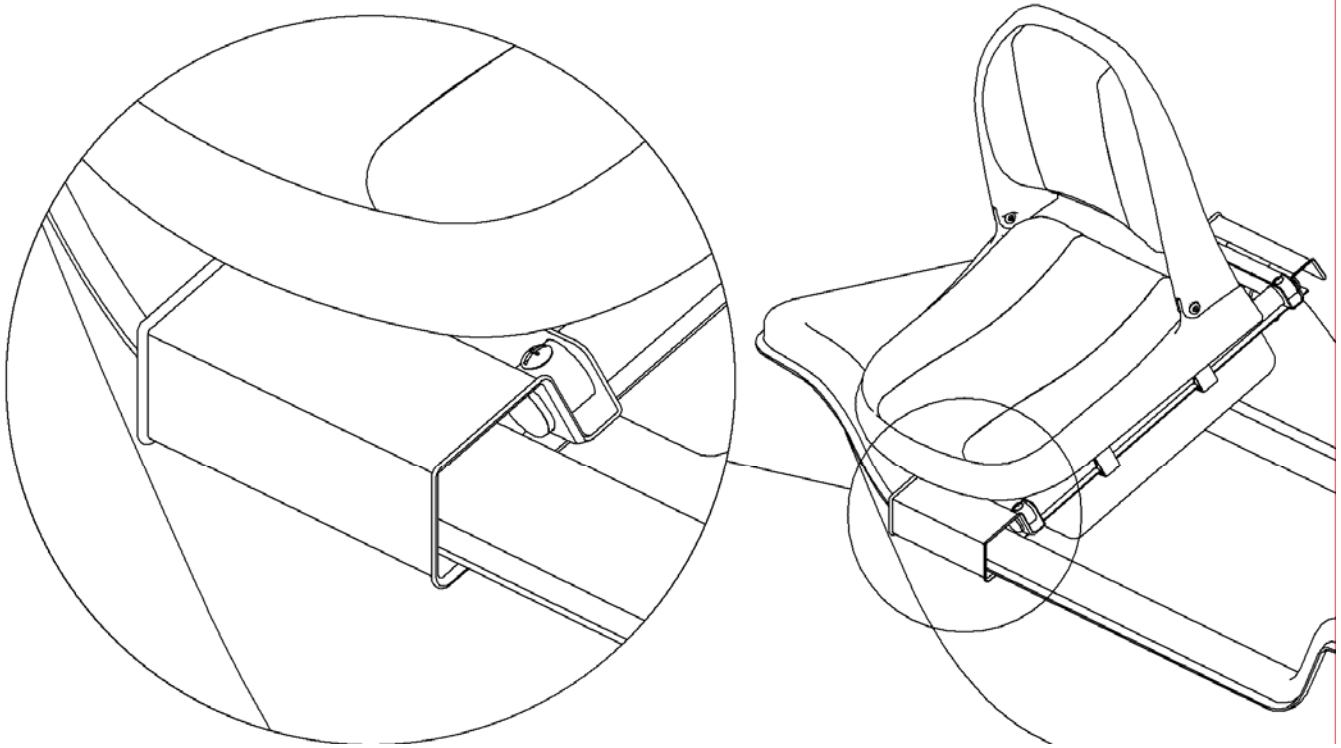
Now that you have the correct measurement under your Canopy Hoop Pole, continue applying the U-Channel Molding around the shelter, one direction from center and then the other, pulling the material as you go so that surface is void of any major creases and is relatively wrinkle-free. From outside the Tent, feel where the molding ends in relationship to the Rear Edge of the Canopy Brackets. If either end of the Molding extends past the Rear Edge of the Canopy Pole Brackets, trim the Molding with a utility knife or side cutters to end an inch or two before the Rear Edge.

Install the Front, Rear, and Roof Spreader Poles as indicated. Adjust the Front and Rear Spreader Poles to tighten the fit of the tent. With everything fully extended, the Canopy Hoop Pole at the front of the unit should be pushing against the floor. If it seems that the tent is not tight enough after doing so or else you are unable to stretch the Tent enough to get this to happen, you probably need to readjust the molding position.

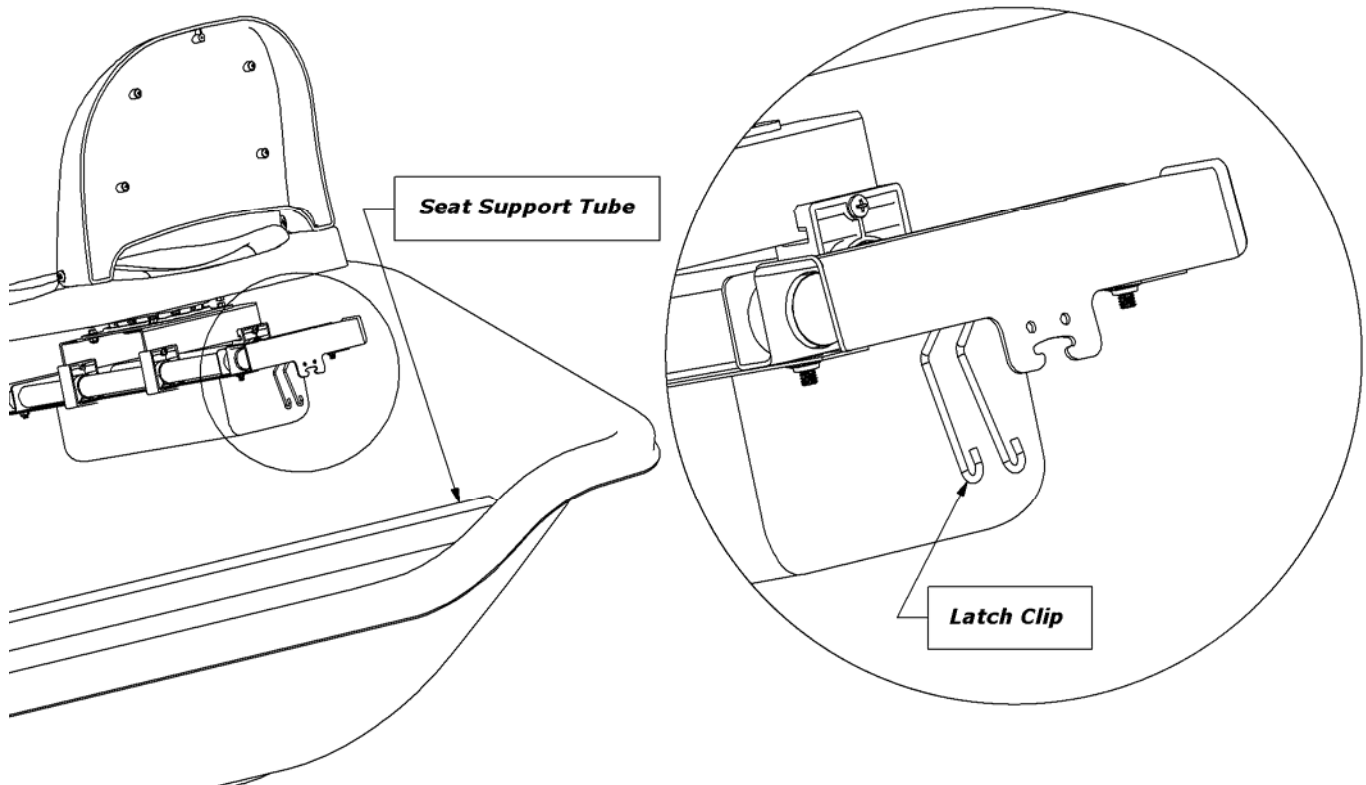
If everything still looks good, secure the Molding with the included #8 Phillips Screws. Evenly space them about every ten to twelve inches, and/or in areas that would benefit most such as inner curves, etc. Since there aren't any predrilled holes, it's advisable to use a powered driver for this operation.

- Seating Installation -

Angle the Seat Assembly slightly while placing the bottom lip of the Front Seat Bracket under the outside edge of the Base Lip.



With the Latch Clip hanging freely, tilt the complete assembly downward until the interior of the Rear Seat Bracket surrounds the Support Tube.



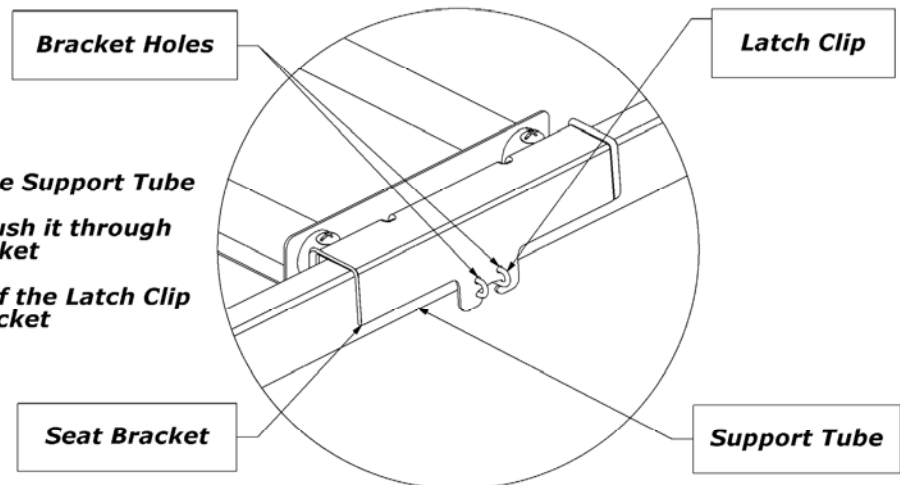
- Seating Installation (cont.) -

Reach under the Rear Seat Bracket and slide the Latch Clip outwards and then up against the underside of the Support Tube. Squeeze the Latch Clip into the horizontal slot of the Rear Seat Bracket.

Secure the position of the Latch Clip by pushing it into the two holes located above the horizontal slot of the Rear Seat Bracket.

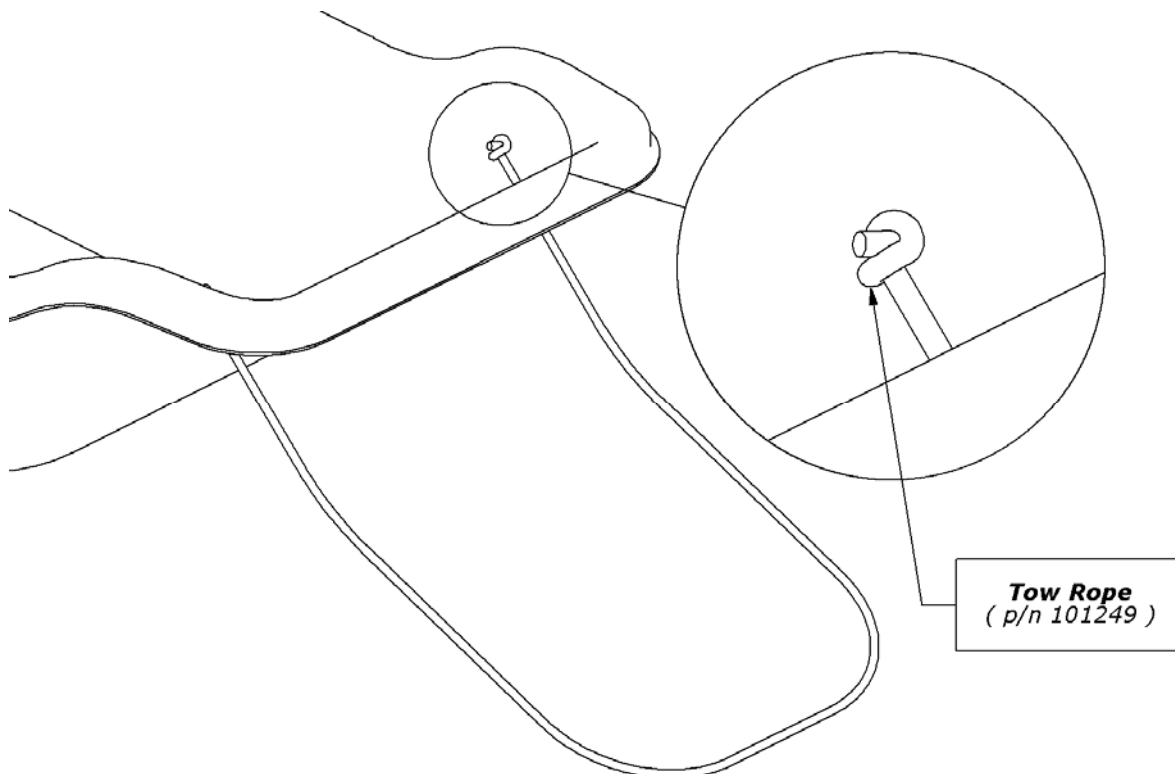
SECURED POSITION:

- Swing the Latch Clip under the Support Tube
- Squeeze the Latch Clip and push it through the slot of the Rear Seat Bracket
- Secure by pushing the ends of the Latch Clip into the holes of the Seat Bracket



WARNING: ALWAYS KEEP THE LATCH CLIP IN THE SECURED POSITION DURING USE. FAILURE TO DO SO COULD RESULT IN INJURY FROM THE SEAT COMING OFF OF ITS MOUNTING SYSTEM.

Included is a Tow Rope for those not planning to install the optional Tow Hitch Assembly (available for purchase at www.clamcorp.com). To install the Tow Rope, drill two 1/2" holes in the sloped front of the Base. Knot the ends of the Tow Rope after routing through the drilled holes.



- Safety Instructions -

Please fully understand and follow all safety instructions as outlined. Failure to do so could result in severe injury or death.

- ***Do not use open flame heaters in your ice shelter. Injury or death may result from fire if tent fabric is exposed to open flame. The tent is not fireproof, but the fabric is treated with a fire retardant that meets CPAI-84 specifications. Application of any foreign substance may render the flame retardant properties ineffective. Ice Armor fabric will melt when contact is made with hot surfaces (i.e., heaters).***
- ***Death from asphyxiation may result from use of oxygen depleting heaters. Open all vents for fresh air ventilation.***
- ***Never leave shelter unattended when set up.***
- ***Due to the increase in traffic (snowmobiles, autos, etc.) on area lakes, ice fishing can be hazardous at night. If you choose to fish at night or in poor visibility conditions, be sure to take precautions with lights or reflectors to show drivers your whereabouts. Night time: exterior reflectors must be visible to reduce risk of collisions.***

- Warranty -

Clam Corporation, Inc. warrants to the original retail purchaser that all Clams are free from manufacturers defects for one (1) year from the date of the original purchase. Warranty does not cover cracked windows, tent tears, broken or bent hoops due to high wind weather conditions or unattended use. Clam Corporation will replace or repair any part found defective within the one (1) year time limit. All parts must be returned to Clam Corporation, Inc. Before returning any parts, you must first call or write and acquire a return authorization. All returns must be returned postage-prepaid and include the original cash register receipt (date and purchase price).

- Limitation of Liability -

It is expressly understood that Clam Corporation liability for its products, whether due to breach of warranty, negligence, strict liability, or otherwise, is limited to the repair of the product as stated above. Clam Corporation is not liable for any injury, loss, damage, or expense, whether direct or consequential, including but not limited to loss of use, income, profit, or damage to material arising in connection with the sale, installation, use of, inability to use, or the repair or replacement of Clam Corporation products. Clam Corporation reserves the right to make alterations or modifications in its products at any time, which in its opinion, may improve the performance and efficiency of the product. It shall not be obligated to make such alterations or modifications to products already in service.