

Fisher-Price®

H8102
Instructions

Magical Mobile™ Gym

Please keep this instruction sheet for future reference, as it contains important information.

Requires three "D" (LR20) **alkaline** batteries (not included).

Adult assembly is required.

Tool required for battery installation:
Phillips screwdriver (not included).

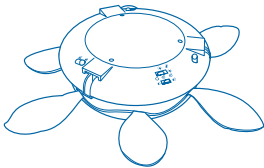


www.fisher-price.com

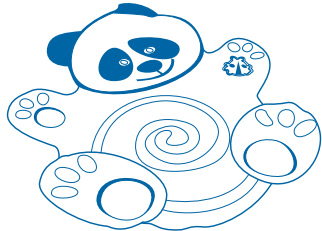
Parts

WARNING

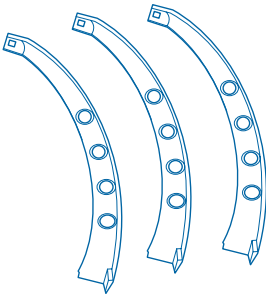
To prevent entanglement injury,
never place the gym in a crib or playpen.
Never add strings, ties or other products to the gym.



Hub



Mat



3 Arches



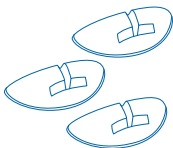
Bumblebee



Butterfly



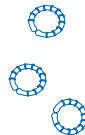
3 Hanging Toys



3 Bases



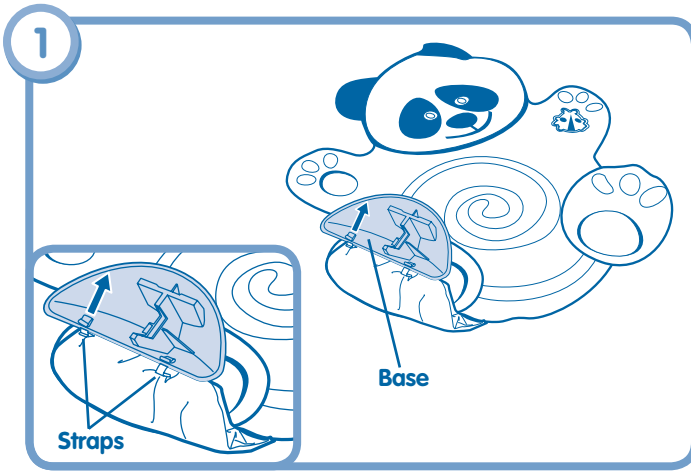
Birdie



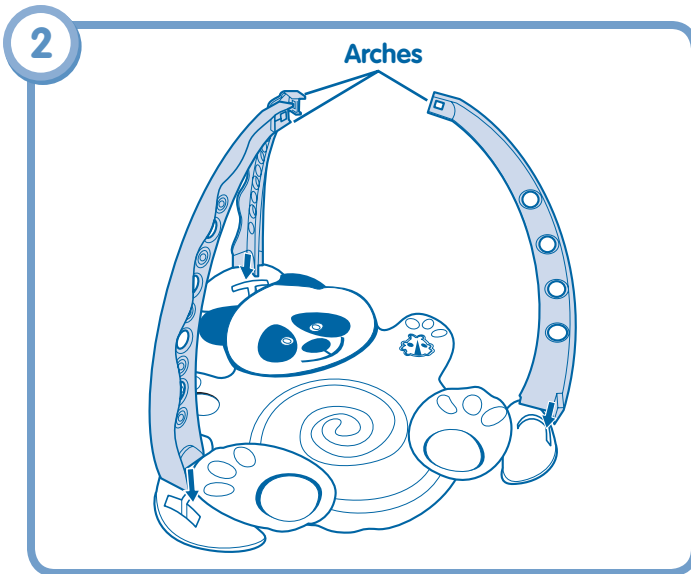
3 Links

Not Shown: Storage Bag

Assembly

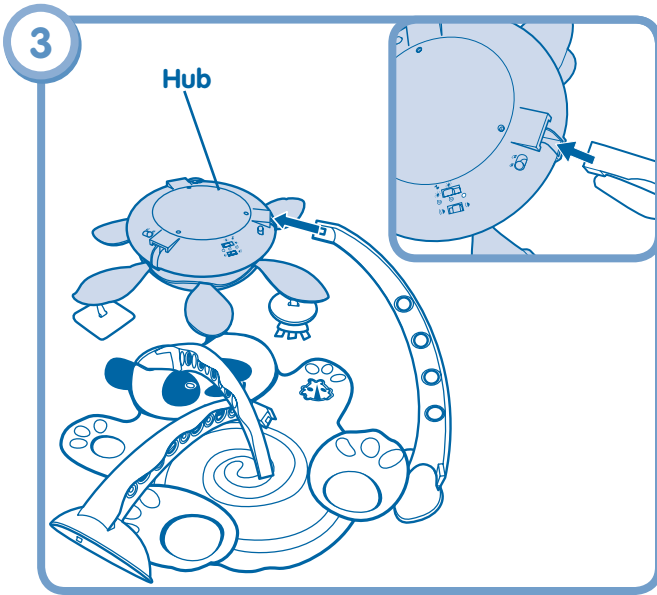


- Fit straps on the mat into the slots in the base. Make sure the tab at the end of each strap forms a "T" under the base.
- Repeat this procedure to attach the mat to the other two bases.

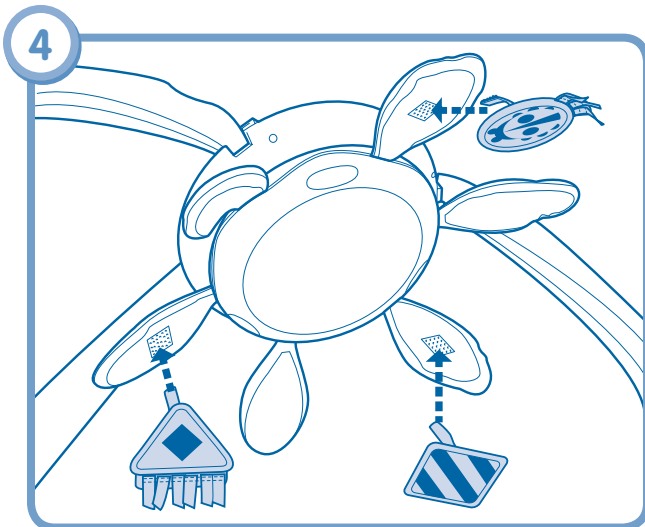


- "Snap" the arches into the bases, as shown.

Assembly

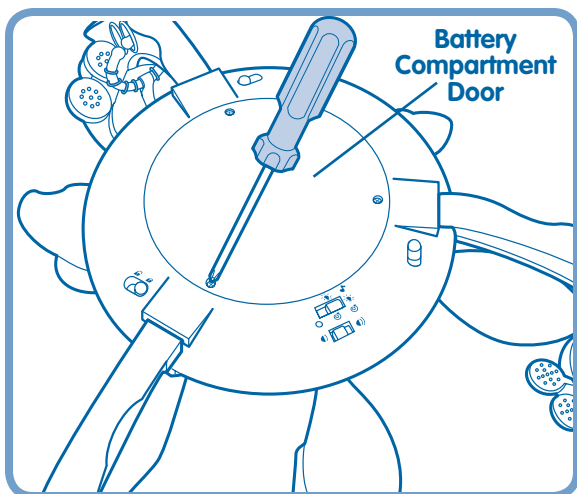


- “Snap” the end of each arch into the hub, as shown.



- Attach the hanging toys to the underside of the hub, as shown.

Battery Installation



- Locate the battery compartment on the hub.
- Loosen the screws in the battery compartment door with a Phillips screwdriver. Remove the battery compartment door.
- Insert three, new, "D" (LR20) **alkaline** batteries, as indicated inside the battery compartment.

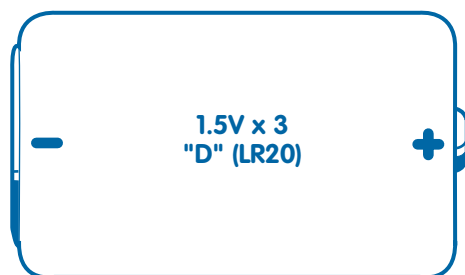
Hint: We recommend using **alkaline** batteries for longer life.

- Replace the battery compartment door and tighten the screws with a Phillips screwdriver. Do not over-tighten.
- When lights, sounds or movement become faint, slow or stop, it's time for an adult to change the batteries!

Battery Safety Information

In exceptional circumstances, batteries may leak fluids that can cause a chemical burn injury or ruin your product. To avoid battery leakage:

- Do not mix old and new batteries or batteries of different types: alkaline, standard (carbon-zinc) or rechargeable (nickel-cadmium).
- Insert batteries as indicated inside the battery compartment.
- Remove batteries during long periods of non-use. Always remove exhausted batteries from the product. Dispose of batteries safely. Do not dispose of this product in a fire. The batteries inside may explode or leak.
- Never short-circuit the battery terminals.
- Use only batteries of the same or equivalent type, as recommended.
- Do not charge non-rechargeable batteries.
- Remove rechargeable batteries from the product before charging.
- If removable, rechargeable batteries are used, they are only to be charged under adult supervision.



SHOWN ACTUAL SIZE

Busy Activities and Fun Sounds!

1

Overhead Gym



- Attach the toys and links to the loops under the hub or the openings on the arches.

2

Tummy-Time Play



- Attach toys lower on the arches so they are in front of baby.

Moving Toys and Lights



Volume Switch

Locate the volume switch on the hub.

Slide the switch to either low volume (🔊) or high volume (🔊) for your child's comfort.

Mode Switch

Locate the mode switch on the hub.



🔊 Slide to this position for slow soothing motion, music and lights.

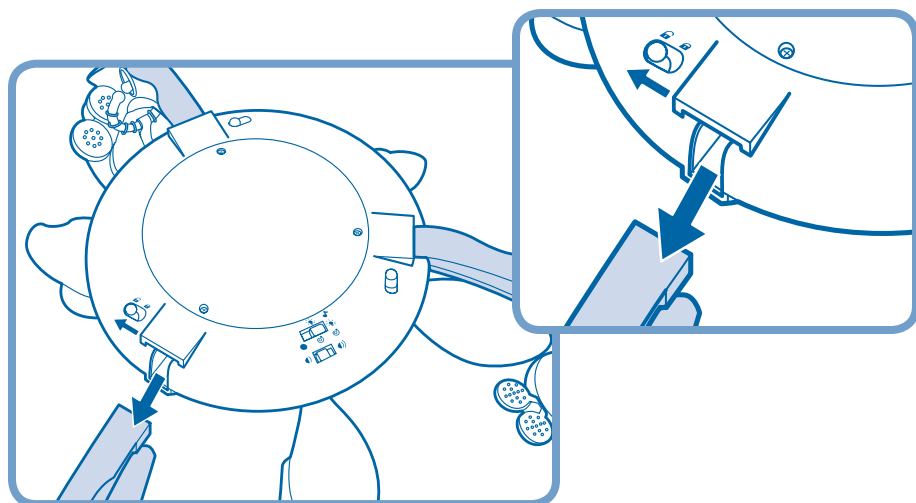



🔊 Choose this position for lights and motion (no music).

○ Slide the mode switch to the off position ○ when not in use.

Note: To restart the mobile, slide the mode switch off ○ and then back on again.

Storage



- Slide the switch on top of the hub to the unlock position  and pull to remove an arch.
- Repeat this procedure to remove the other two arches from the hub.
- Unfasten the mat straps from the bases.
- Store the arches, hub, toys and links in the storage bag.

Care

Mat

- Unfasten the mat straps from the bases.
- Machine wash the mat on the gentle cycle in cold water. Do not use bleach. Line dry the mat.

Arches, Toys, Links and Hub

- Wipe with a clean cloth dampened with a mild soap and water solution. Do not immerse the hub.
- The hub has no consumer serviceable parts. Do not take the hub apart.

Consumer Information

Visit us on line at www.service.fisher-price.com.

Call Fisher-Price® Consumer Relations, toll-free at **1-800-432-5437**, 8 AM - 6 PM EST Monday through Friday. Hearing-impaired consumers using TTY/TDD equipment, please call 1-800-382-7470.

Write to us at: Fisher-Price® Consumer Relations,
636 Girard Avenue, East Aurora, New York 14052.

FCC Statement

(United States Only)

This equipment has been tested and found to comply with the limits for a Class B digital device, pursuant to Part 15 of the FCC Rules. These limits are designed to provide reasonable protection against harmful interference in a residential installation. This equipment generates, uses and can radiate radio frequency energy and, if not installed and used in accordance with the instructions, may cause harmful interference to radio communications. However, there is no guarantee that interference will not occur in a particular installation. If this equipment does cause harmful interference to radio or television reception, which can be determined by turning the equipment off and on, the user is encouraged to try to correct the interference by one or more of the following measures:

- Reorient or relocate the receiving antenna.
- Increase the separation between the equipment and receiver.
- Consult the dealer or an experienced radio/TV technician for help.

Note: Changes or modifications not expressly approved by the manufacturer responsible for compliance could void the user's authority to operate the equipment.

For countries outside the United States:

CANADA: Questions? **1-800-432-5437**. Mattel Canada Inc., 6155 Freemont Blvd., Mississauga, Ontario L5R 3W2; www.service.mattel.com.

GREAT BRITAIN: [Mattel UK Ltd, Vanwall Business Park, Maidenhead SL6 4UB. Helpline: 01628 500303; www.service.mattel.com/uk](http://www.service.mattel.com/uk)

AUSTRALIA: Mattel Australia Pty. Ltd., 658 Church Street, Locked Bag #870, Richmond, Victoria 3121 Australia. Consumer Advisory Service 1300 135 312.

NEW ZEALAND: 16-18 William Pickering Drive, Albany 1331, Auckland.

ASIA: Mattel East Asia Ltd, Room 1106, South Tower, World Finance Centre, Harbour City, Tsimshatsui, HK, China.