

CRIMESTOPPER

CS-2012TW1

Super Rage™

2-Way AM/FM Paging Remote Alarm, Keyless Entry System & Engine Starting System with 1-Way Sidekick Remote Control

OPERATING INSTRUCTIONS

CONGRATULATIONS on your choice of a CS-2012TW1 Super Rage™ Alarm & Remote Engine Starter by Crimestopper Security Products Inc. This booklet contains the information necessary for operating your system. If any questions arise, contact your installation dealer or Crimestopper Security Products Inc.

***IMPORTANT INFORMATION: Primary and Optional Features**

-PRIMARY: These are features that must be connected in order for the system to operate properly i.e. Power, Ground, Flashing Lights, Siren, LED, etc.

-OPTIONAL: Optional features are connected only if desired or agreed upon by the installing dealer i.e. Door Locks, Horn Honk, Dome light illumination, Trunk Pop, etc. These features may require additional parts and labor charges. Consult with your installer about these features **before** installation.

CONTACT INFORMATION:

TECHNICAL SUPPORT (800)-998-6880
Monday - Friday 8:00am - 4:30pm Pacific

Website: www.crimestopper.com
E-mail: tech-support@crimestopper.com

CRIMESTOPPER
SECURITY PRODUCTS, INC.
1770 S. TAPO STREET
SIMI VALLEY, CA. 93063

This device complies with FCC Rules part 15. Operation is subject to the following two conditions: 1) This device may not cause interference, and (2) this device must accept any interference that may be received, including interference that may cause undesired operation. The manufacturer is not responsible for any radio or TV interference caused by unauthorized modification to this equipment. Such modification could void the user's authority to operate the equipment.

TABLE OF CONTENTS

Operation Cautions & Warnings.....2

2-Way LED Paging Remote.....3

1-Way “SideKick” Non-Paging Remote.....4

Paging Tones & LEDs.....5

Operating Instructions - Alarm.....6-9

LED Diagnostics.....9

Remote Engine Control.....9-13

Optional Turbo Timer Mode.....14

Anti-Carjack Protection.....15

Transmitter Programming.....16

Pager Remote Battery Replacement.....17

Troubleshooting: “Before you call section”.....18-19

OPERATION CAUTIONS & WARNINGS

CRIMESTOPPER SECURITY PRODUCTS, INC. and its **VENDORS** shall not be liable for any accident resulting from the use of this equipment. This system is designed to be professionally installed into a car or vehicle in good running order. Items, such as parking brake, door switches, and all engine safety features, must be in perfect working condition.

DAMAGE resulting from misuse or negligence is NOT covered under warranty and will be subject to repair and / or replacement charges.

IT IS ABSOLUTELY THE OWNER’S SOLE RESPONSIBILITY TO: A) Understand the operation of this system and its safety features. B) Check for proper operation of these safety features prior to accepting delivery of the vehicle from the installation facility. C) Check and maintain the condition of the vehicle and all items relative to the proper operation of this system and its safety features.

DO NOT remote start the vehicle in a closed garage. Make sure that the vehicle is outdoors, a garage door is open, or there is adequate exhaust ventilation. Failure to observe this rule could result in **injury or death** from poisonous Carbon Monoxide fumes. This is especially important when using the Timed Self-Start feature of the unit

2-WAY LED PAGING REMOTE

PAGER / REMOTE TRANSCEIVER:

The hand-held remote transceiver is used to send and receive information from the vehicle. The Control Module transmits confirmation signals from the vehicle to your pager. Your range will vary depending on location, terrain, and local RF noise/interference. This system is not guaranteed to page you if you are behind concrete walls, underground, in a large structure, or in an area with high levels of electronic interference. Handle the pager/remote with care. For more on range, see "Range Questions" on page 18.

OPERATION:

BUTTON 1 (Lock Symbol):

- Press and release to Arm/Lock system.
- Press and Hold for more than 3 seconds for Panic.

BUTTON 2 (Unlock Symbol):

- Press and release to Disarm/Unlock system or reset a cycle.

BUTTON 3 (Trunk Symbol):

- Press and Release to activate trunk pop (Auxiliary output #1) Optional Feature.
- Press and hold to activate a second optional feature (Auxiliary output #2).

BUTTON 4 (Start):

- Press for at least 1 second to Start Engine
- Press for at least 1 second to Stop Engine

BUTTON 5 (Side Button):

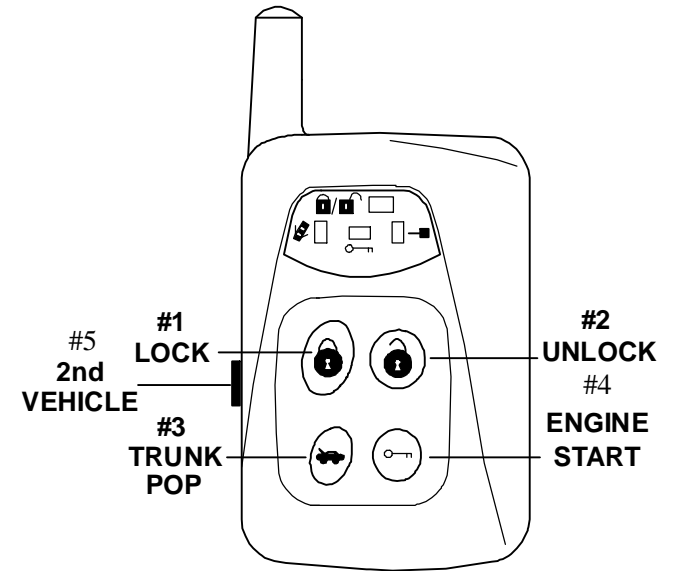
- Press and release to show the previous status.
- Press and hold for 5 seconds to switch to vehicle #2.

BUTTONS 1+2 (Together Simultaneously):

- Press within 3 seconds of arming to disable sensor input
- When Disarmed Press and Hold for 3 seconds to go into Valet mode and Continue to hold for Valet Park

BUTTONS 1+3 (Together Simultaneously):

- When Ignition is ON, press for 3 seconds to activate Carjack protection



BUTTONS 2+4 (Together Simultaneously)

- Press and release to Arm or Disarm without siren chirp.

1-WAY "SIDEKICK" NON-PAGING REMOTE

The 1-Way sidekick remote adds flexibility to your CS-2012TW1. You have the convenience of operating your system without needing to carry the pager remote. The "Sidekick" remote offers all of the same operation features remote, except the range is lower and it will not receive page-back confirmations from the vehicle. See diagram at right for Sidekick 1-Way remote operation.

BUTTON 1 (Lock Symbol):

- Press and release to Arm/Lock system.
- Press and Hold for more than 3 seconds to activate "Panic" feature.

BUTTON 2 (Unlock Symbol):

- Press and release to Disarm/Unlock system, or reset a cycle.

BUTTON 3 (Trunk Symbol):

- Press and Release to activate trunk pop (Auxiliary output #1) Optional Feature.
- Press and Hold to activate a second optional feature (Auxiliary output #2).

BUTTON 4 (Start):

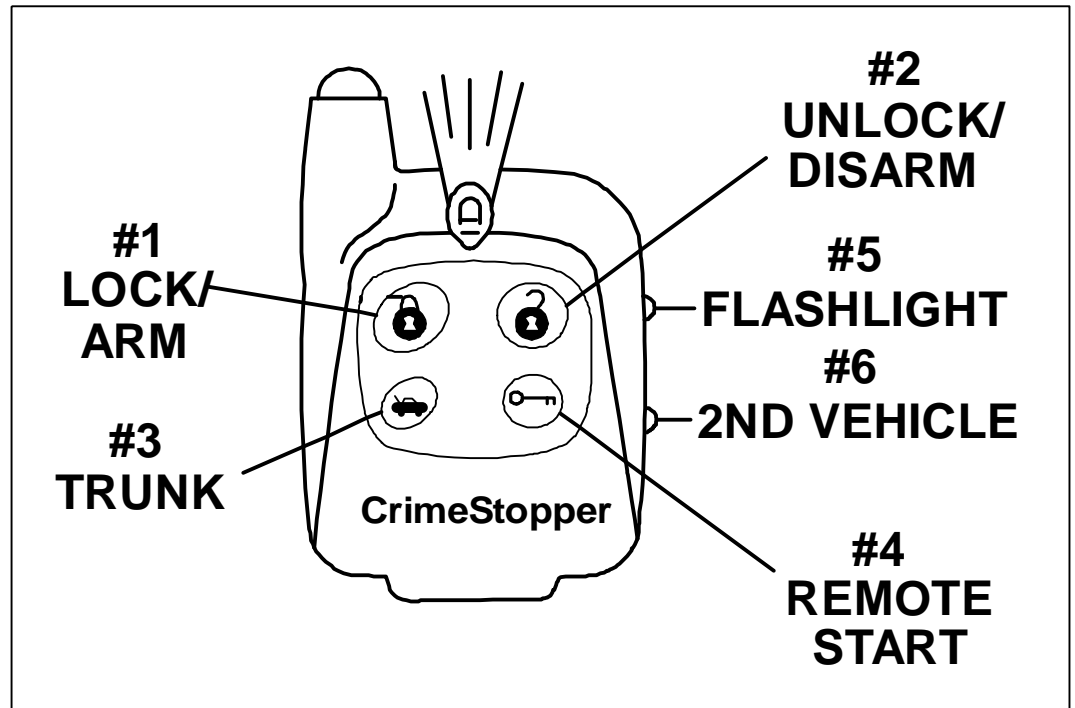
- Press and release for at least 1 second to Start/Stop engine.

BUTTON 5 (Upper side button of remote):

- Press for convenient flashlight function. The high-power LED acts as a mini flashlight.

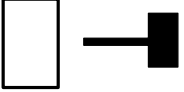
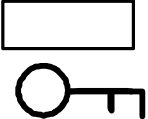
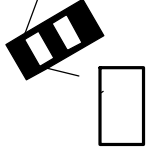

BUTTON 6 (Lower side button of remote):

- Press and release to activate vehicle #2 mode (LED will flash for 4 seconds to use vehicle #2), otherwise remote will revert back to vehicle #1.



PAGING TONES & LEDs

CS-2012TW1 PAGING LEDs

<p>Yellow LED: Shock sensor, Trunk pop</p> 	<p>Blue LED: Remote Start, Ignition</p> 	<p>Red LED: Door Trigger</p> 	<p>Orange/Green LED: Lock/Unlock, Hood/Trunk</p> 
---	--	---	---

PAGE-BACK:

FEATURE	BUTTON	ACTION	BEEPS	LED COLOR & FLASH
LOCK	#1 (Lock)	Press & Release	1X, then 1X	Orange - 1X
UNLOCK	#2 (Unlock)	Press & Release	1X, then 2X	Green - 2X
AUX #1	#3 (Trunk)	Press & Release	1X, then 3 fast	Yellow – 1 long
AUX #2	#3 (Trunk)	Press & Hold	1X	NO PAGE BACK
PANIC	#1 (Lock)	Press and Hold for at least 3 seconds	1X, 2X, 12X	Orange 12X - Green 1X
REMOTE START REQUEST	#4 (Start)	Press & Hold button for at least 1 second	1X, 3X	Blue - 3X
ENGINE RUNNING CONFIRMATION			6X	Blue - 6X
TURN OFF ENGINE (From remote)	#4 (Start)	Press & Release	No Beep	No Page Back
DOOR VIOLATION			1 Long / 1short	Red – Flashing
HOOD/TRUNK VIOLATION			5 Long	Green - 5X
SHOCK VIOLATION			1 Long / 2 Short	Yellow - Flashing
PRE-WARN			1X	Yellow – 1X
IGNITION VIOLATION			1 Long / 3 Short	Blue - Flashing

OPERATING INSTRUCTIONS - ALARM

Active Arming / Locking:

Press and release button #1 (Lock symbol) on the transmitter. The system will arm and confirm with one siren chirp, one light flash, and the LED will begin to flash. Power locks will lock (if equipped). Starter disable circuit will turn on. After a short delay to allow the vehicle and electronics to settle, the system is completely armed.

Disarming: / Unlocking

Press and release button #2 (Unlock symbol) on the transmitter. System will disarm and confirm with two siren chirps, two light flashes, and the LED will turn off. Power locks will Unlock and Interior Dome light will turn on (if installed with these optional features)

Disarming While Tripped (Triggered):

Disarming the System while it is triggering requires TWO presses of the #2 Unlock Button. The first press of Button #2 Resets the alarm cycle only (system still armed) while a second press will disarm/unlock the system.

Silent Arming/Disarming (On demand):

To Arm or Disarm the system without siren chirps, press and release both Buttons #2 (Unlock) and #4 (Start) at the same time. System will Arm or Disarm without siren chirps that one time. Flashing lights and LED will be the only indicators of Arm/Disarm status. If the system was tripped while you were away, 4 chirps will be heard to notify you that the system was tripped.

Silent Arming/Disarming (Chirp Defeat):

This system can be programmed to silent arm and disarm using the normal lock and unlock buttons. Flashing lights and LED will be the only indicators of armed or disarm status. Check with your installer or follow programming option instructions in the installation manual.

Remote Panic Protection

To sound the alarm in an emergency situation or to draw attention to your vehicle, press and hold Button #1 (Lock) for at least 3 seconds until the siren sounds. Press Button #2 (Unlock) to reset panic mode.

Driver's Priority / Split Unlock (Optional)

When using the optional separate driver's and passenger unlock function, press and release button #2 (Unlock symbol) on the transmitter to unlock driver's door only, then press the #2 button again within 2-4 seconds to unlock remaining doors. This feature is optional and requires additional parts and/or labor

Arming With Shock Sensor Bypass

To arm the alarm and bypass shock sensor protection, press Button #1 as normal then press and release Button #1 and #2 together within 2 seconds. You will hear 3 extra siren chirps indicating shock sensor bypass for this arming cycle only.

OPERATING INSTRUCTIONS - ALARM

Alarm Triggering

An intrusion into the vehicle or hard impact to the body will sound the alarm and flash the lights for 1 minute. After 1 minute the trigger cycle will automatically stop and alarm will remain armed to continue protecting the vehicle. If a door is left open after an intrusion then the unit will cycle a maximum of 5 minutes and continue to protect the other un-tampered or unopened zones.

Prior intrusion Alert

This system will notify you if the alarm was tripped while you were away. Upon disarming, the two normal disarm chirps will be heard then the system will emit 4 additional siren chirps. Check your vehicle for any signs of a break in or tampering. Also see LED Diagnostics Section to determine the cause of the trigger.

Open Zone Alert / Bypass

Upon arming, this system will warn you if a door is left open. After a 60 second setup delay (for extended dome lights) has elapsed, if the system detects a fault or a door left open, the siren will chirp 5 times along with 5 light flashes. This zone will be automatically bypassed and the alarm will protect all other zones.

Pre-Warning Shock Protection

The Pre-warning (warn-away) feature will activate when a low-level shock or vibration detected by the system's shock sensor. The alarm will chirp the siren 5 times and flash the lights once to help deter any further tampering with the vehicle.

Passive Arming Mode: (Programmable)

Passive (automatic) arming occurs 30 seconds after the ignition is turned off and the last door is closed. Upon closing the last door, the unit will flash the lights twice and LED will be flashing rapidly to confirm passive countdown. If a door is reopened within the 30 second period, the countdown stops and begins again when the door is closed. Passive arming provides failsafe protection in case you forget to arm the system.

Passive Locking: (Programmable)

The CS-2012TW1 system can be programmed to passively lock the doors when the system passively arms. The default setting is OFF because passive locking increases the risk of locking the keys in the vehicle.

Trunk/Hatch Pop (Optional, Remote AUX. Output 1)

This feature is designed to interface with existing Factory power trunk or power hatch release systems and may require additional parts and/or labor charges. Press and release Button #3 (Trunk) on the transmitter to pop/open the trunk/hatch. If the system is armed, it will also disarm when the button #3 is pressed.

OPERATING INSTRUCTIONS - ALARM

Remote AUX. Output 2 (Optional)

This system contains a second auxiliary output to activate other accessories or devices. To activate the systems' Second Auxiliary Output, press and hold Button #3 (Trunk Symbol) on the transmitter for more than 2 seconds. This is a momentary output that will stay active as long as the remote button is held down. Remote output #2 requires programming before operation. Check with your installer or follow programming option instructions in the installation manual.

Dome Light Illumination (Optional)

This feature will turn on the vehicle's dome light upon disarming for 30 seconds or until the key is inserted and turned on. This will provide illuminated entry to your vehicle in dimly lit areas for safety and security.

Emergency Override (Disarm)

If you have lost the transmitter or it stops working for any reason and the Alarm is armed, you will have to disarm the system manually. Open the door with the key [alarm will sound], turn the ignition on, and press the override/program button for about 5 seconds. The Alarm will disarm and allow you to use the vehicle until you can repair/replace the remote. Note you have to put the system into valet mode to prevent passive arming.

Valet Mode (Enter manually or using the remote)

To disable Alarm and Remote Engine Starting for vehicle servicing or otherwise, turn the ignition on and press the override/program button [about 5-7 seconds] until you hear (3) siren chirps and the LED turns on solid. Repeat the process to exit VALET mode. To enter / exit valet via the remote, press and hold both buttons #1 (Lock) and Button #2 (unlock) together for about 3 seconds until 3 chirps are heard. Repeat this step to exit via the remote transmitter. Lock/Unlock and AUX features will still operate in when in VALET mode however remote start and alarm functions are inhibited.

Valet Park Mode (Using the remote transmitter only)

Note: Valet Park mode is only accessible when using the remote transmitter. Valet park mode allows you to turn over the vehicle to a valet allowing access to drive/lock/unlock your vehicle, but alarm will trigger if the trunk is opened. To activate Valet Park, press and hold both buttons #1 (Lock) and Button #2 (unlock) together for about 6 seconds. 3 chirps will be heard first when unit goes into regular Valet and as you continue to hold both buttons you will hear 2 more chirps. LED will flash slowly when in Valet Park. Repeat step to exit Valet Park mode.

OPERATING INSTRUCTIONS - ALARM

Optional M.A.P. (Mobile Accessories Protection)

This system can be programmed to provide Crimestopper's unique M.A.P. (Mobile Accessories Protection) feature that allows you to prevent unauthorized access of your vehicles Audio, Cellular, Navigation, or Entertainment systems. This feature is OPTIONAL and will require extra parts and labor for installation. Consult your installation dealer about MAP before or during installation. The CS2012TW1 must be programmed for MAP operation. When the system is put into Valet Park mode, M.A.P. will prevent stereo, entertainment, navigation, or cellular system from being used. Basic M.A.P. wiring information is provided in the installation manual.

LED DIAGNOSTICS

The CS-2012TW1 system includes disarm diagnostics, through the RED LED light, that will help in determining what caused the last trigger of the alarm system. This is a valuable tool in determining how the vehicle was tampered with or if there is a false alarm problem in which case you can make the necessary adjustments to correct the problem. When the system is disarmed with the remote you will hear the normal 2 chirps, then 4 quick chirps that indicate the alarm was triggered while you were away. Check the LED light for a sequence of flashes:

Shock Sensor = 1 Flash Door = 2 Flashes Hood/Trunk = 3 Flashes Ignition = 4 Flashes

Diagnostics will reset when the Ignition is turned on or when the system is re-armed.

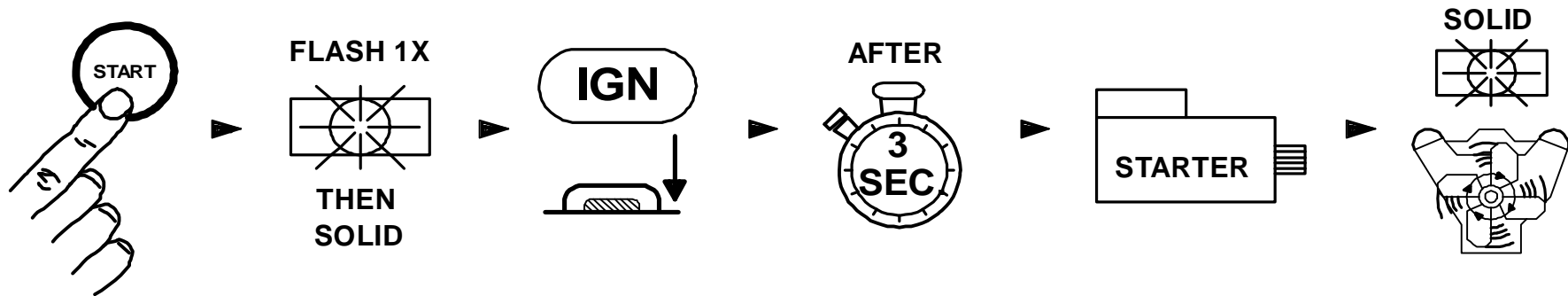
REMOTE ENGINE CONTROL

REMOTE ENGINE STARTING - SUCCESSFUL START

- 1) Press and release the remote start button for at least 1 second. System will chirp 3 times for audible confirmation. (Chirps can be programmed on or off-See Option programming in the installation manual.)
- 2) Parking lights flash once, then turn on solid, Ignition/Accessory circuits turn on.
- 3) After 6 seconds Starter Motor engages, Parking lights and Accessory circuits turn off while cranking.
- 4) Engine Starts and Runs. Parking Lights and Accessory turn back on, Doors Lock.
- 5) Engine will remain running for programmed run time until reset with Brake pedal. If needed, the engine can be turned off with remote transmitter.

REMOTE ENGINE CONTROL

REMOTE ENGINE STARTING - SUCCESSFUL START DIAGRAM:



REMOTE ENGINE STARTING - UNSUCCESSFUL START

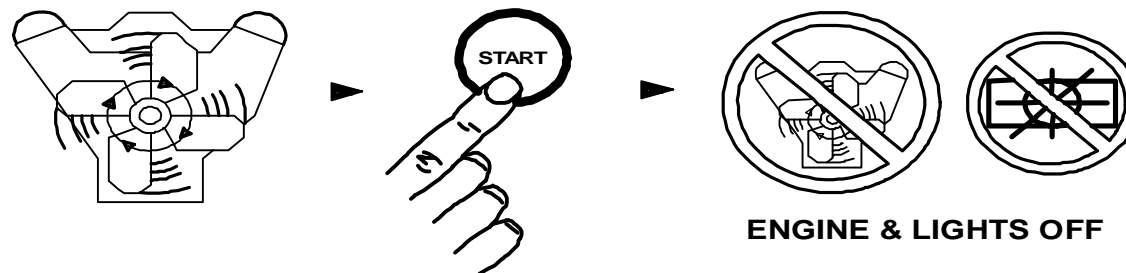
In the event that the engine does not start on the first attempt, the system shuts down for a few seconds, then attempts to restart the engine a 2nd and 3rd time. For hard starting engines, the unit will allow a starter crank time of up to 10 seconds maximum. This should provide ample cranking time for difficult starts, but is limited to 10 seconds to help prevent damage to the starter from over cranking.

- 1) If engine starts on 2nd or 3rd attempt, see steps 4 & 5 (last page) of "Successful Start".
- 2) If Third attempt fails to start engine, the system will turn off and doors will remain locked. *NO FURTHER ATTEMPTS WILL BE MADE AUTOMATICALLY UNLESS YOU PRESS THE START BUTTON AGAIN.*

TURNING OFF A REMOTE STARTED ENGINE:

- 1) Engine is running in Remote Start (Parking lights ON).
- 2) Press and release the Start button for at least 1 second.
- 3) Engine & parking lights turn OFF, Doors remain locked or will re-lock if applicable.

TURNING OFF A REMOTE STARTED ENGINE DIAGRAM:



REMOTE ENGINE CONTROL

ENTERING YOUR REMOTE STARTED VEHICLE:

- 1) With engine running, Remote Unlock/Disarm system (If armed) or open door with key.
- 2) Enter vehicle and be careful not to step on brake pedal! (Remote Start Reset)
- 3) Turn Ignition to ON/RUN position, then press brake pedal to reset the Remote Starter & Shift out of park.
- 4) Remote starter will reset instantly when the brake is pressed. Parking lights will turn off and the ignition key is now controlling your vehicle.

IDLE DOWN MODE (TAKE-OVER OPERATION)

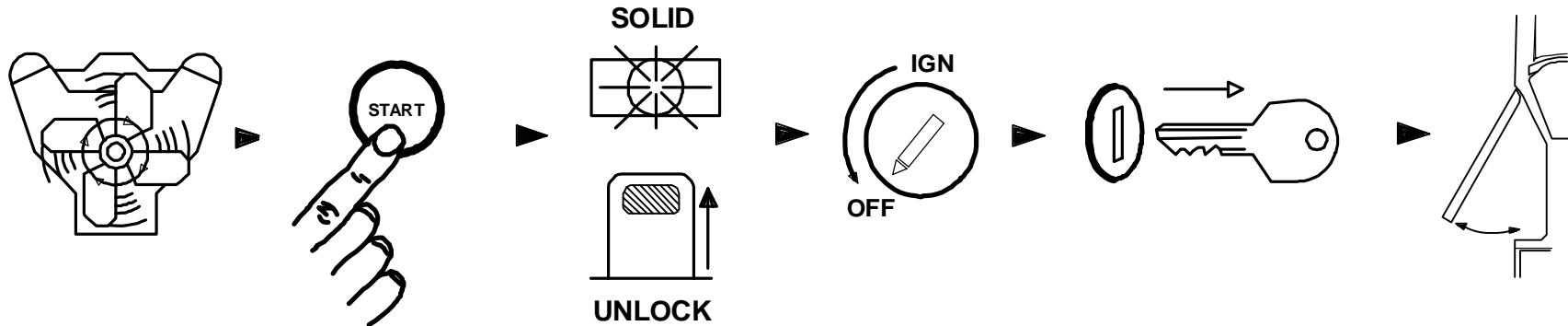
This mode allows the unit to take over operation of your idling, parked vehicle while the ignition key is removed and you exit the vehicle. The vehicle is put into a remote running condition before you exit and it will remain running for the programmed run time, until you return, or until the remote start button is pressed.

Examples:

You pull up to a convenience store for a coffee, "Idle Down" mode keeps engine running when you exit the vehicle, (with keys in hand) remote lock/arm alarm. When you return, unlock/disarm alarm, turn ignition ON and drive away.

IDLE DOWN MODE - EXITING THE VEHICLE:

- 1) With engine running, press and release the Start button. Siren will chirp 3 times for confirmation.
- 2) Parking Lights will turn ON.
- 3) Doors will unlock, or if brake pedal is being depressed then doors will unlock when it is released.
- 4) Turn OFF Ignition and remove key. Engine should remain running.
- 5) Exit vehicle then remote lock doors if desired.
- 6) Engine will remain running for programmed run time, until you return, or press the remote start button.



ENTERING A VEHICLE DURING "IDLE-DOWN" or "INFINITY RUN" MODES:

See "ENTERING YOUR REMOTE STARTED VEHICLE" section above.

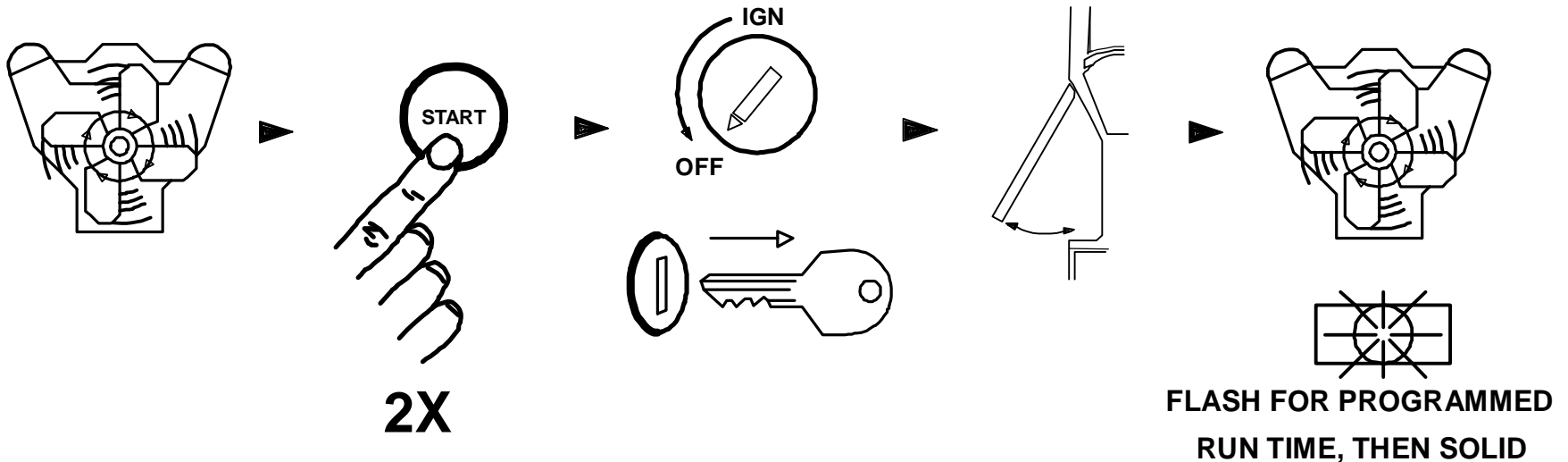
REMOTE ENGINE CONTROL

INFINITY RUN MODE

This mode allows the vehicle's engine to remain running *INDEFINITELY*. This mode can be beneficial to law enforcement vehicles or commercial vehicles that need to remain running unattended for long periods of time.

INFINITY RUN MODE – EXITING THE VEHICLE:

- 1) Follow steps on the last page for "IDLE DOWN MODE - EXITING THE VEHICLE", except press the remote start button **TWO** times at STEP #1.
- 2) Parking Lights will start flashing instead of coming on solid, and doors will unlock.
- 3) Turn Ignition switch OFF, remove key and exit the vehicle. Engine should remain running.
- 4) The vehicle's parking lights will flash for the programmed run time of 12, 24, or 36, or 48 minutes and then switch to solid while motor runs indefinitely or until fuel supply runs out.



ENTERING A VEHICLE DURING "IDLE-DOWN" or "INFINITY RUN" MODES:

See "ENTERING YOUR REMOTE STARTED VEHICLE" section at top of page 11.

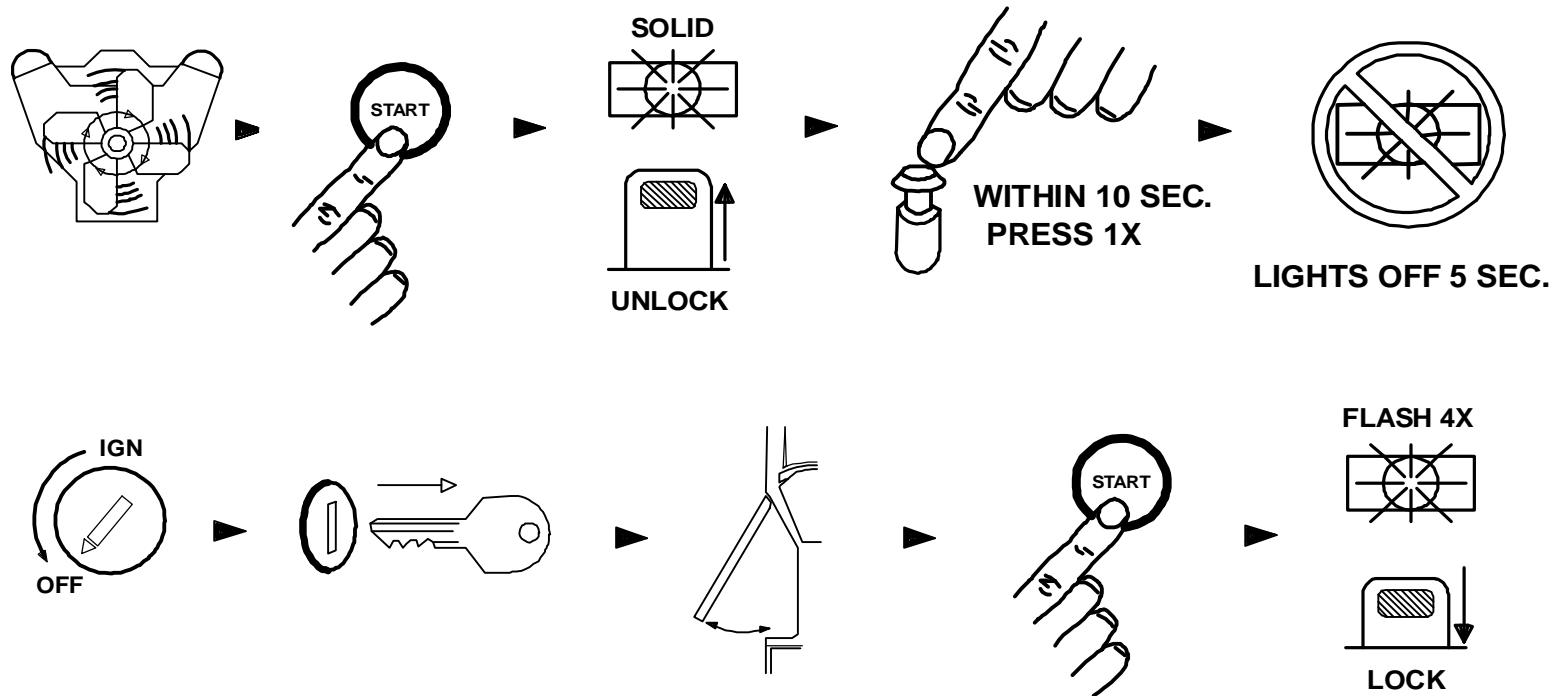
REMOTE ENGINE CONTROL

TIMED SELF START MODE

This mode allows the vehicle to be programmed to self-start every 4 hours and run for the programmed run time. This can be helpful during extremely cold conditions where engine fluid freeze-up is a concern. THE VEHICLE MUST BE OUTDOORS OR IN A WELL VENILATED AREA.

TIMED SELF-START MODE – EXITING THE VEHICLE:

- 1) Have engine running with the Key, then press and release the Start button.
- 2) Within the next 10 seconds press the valet/program button once.
- 3) Parking Lights will turn OFF for about 5 seconds, and doors will unlock.
- 4) Turn Ignition switch OFF, remove key and exit the vehicle. Engine should remain running.
- 5) To turn off the engine, press the remote start button. The parking lights will flash 4 TIMES as a confirmation that the unit is in Timed Self-Start Mode.
- 6) The Vehicle will Start by itself every 4 hours until driven with key or started via remote control.



RESETTING TIMED SELF START MODE

To reset the timed self-start mode, start the vehicle using the key or the remote control

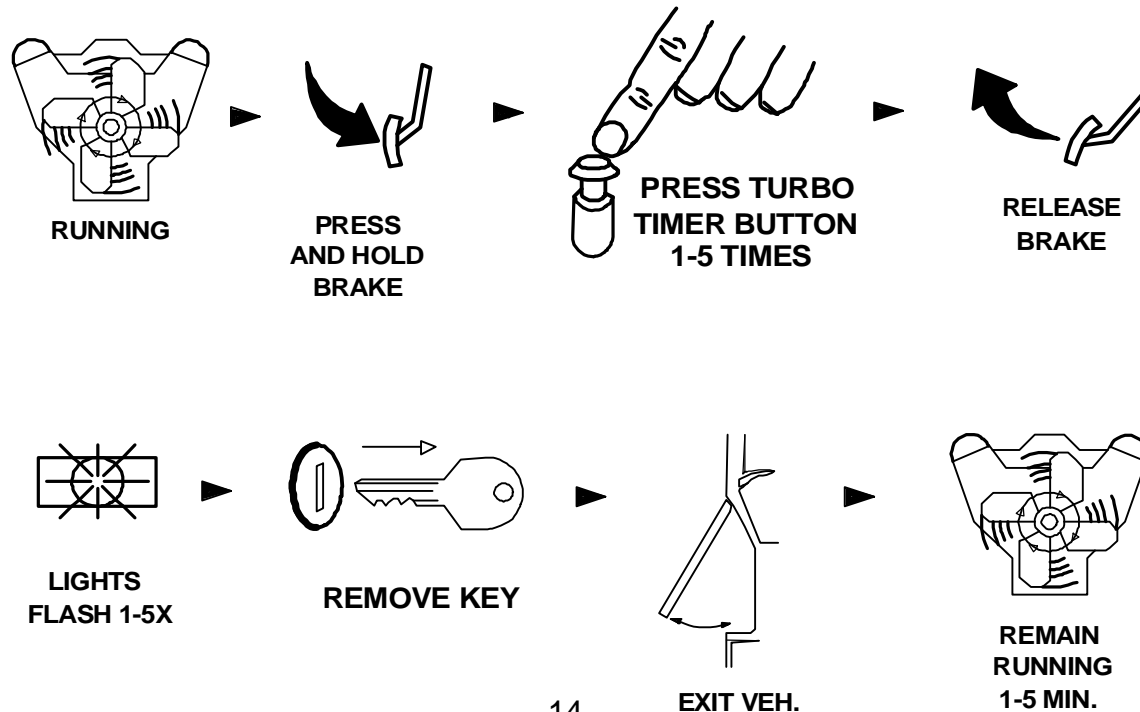
OPTIONAL TURBO TIMER MODE

OPTIONAL TURBO TIMER MODE:

IMPORTANT NOTE: This mode requires the use of an extra part called a momentary switch or button that is not included with the kit. Check with your installer about adding this feature. The optional Turbo Timer mode allows the your system to keep your vehicle running for 1 to 5 minutes [selectively] after you remove the key, exit the vehicle, and lock the doors remotely [if you own a Turbo or Turbo Diesel]. This is handy for turbo cool down without the need for expensive Turbo Timers.

- 1) Engine should be running with the key. Press and hold the brake pedal.
- 2) Press your "Turbo Timer" button 1 to 5 times for each minute of run time you desire. (1 press = 1 min.)
- 3) Release the brake pedal and your system will confirm by flashing the lights the same number of times the button was pressed.
- 4) Turn Ignition switch OFF, remove key and exit the vehicle. Remote lock your doors for safety. The engine should remain running for the selected number of minutes.

CAUTION!! IF YOU PRESS THE TURBO TIMER BUTTON WHEN ENGINE IS NOT RUNNING IT WILL TRIGGER A REMOTE START! MAKE A NOTE OF THIS IF YOU HAVE CHILDREN. CONSIDER THIS WHEN CHOOSING A LOCATION FOR YOUR TURBO TIMER BUTTON.



ANTI CARJACK PROTECTION

REMOTE OPERATED CARJACK PROTECTION

This feature provides Active Carjack protection through the remote control. When the Ignition is on (vehicle is running), press and hold the #1 LOCK Button and #3 TRUNK Button for 3 seconds. The parking lights will flash 2 times and the LED will begin to flash rapidly to confirm the beginning of a Carjack countdown. 30 Seconds later, the unit will begin a Carjack Cycle consisting of 20 seconds of pre-warning chirps turning into a full system activation with siren / flashing light pulses for up to 5 min. If the Ignition is turned off during a Carjack trigger the siren and lights stop but Carjack protection is still active. The Siren and Lights will resume if the Carjacker tries to turn the Ignition back ON. TO RESET: Press Button #2 (UNLOCK) on the remote and the siren will chirp once, or turn the key on and press and hold the override button for at least 5 seconds.

SWITCH-CONTROLLED & FULL TIME CARJACK (PINK WIRE CONFIGURATION)

This feature can provide Passive or Manual control Carjack protection depending on the configuration of the Pink Carjack wire of the alarm system. The system must be programmed for the Pink wire to be used as a Carjack trigger at Programming Option #8 in the Installation Manual. Once the Pink wire is programmed to serve as a Carjack trigger, it can be configured in different ways to provide different levels of protection. It can be connected to a hidden +12V toggle/momentary switch or to +12V Ignition Power. See installation manual. Read the sections below for further descriptions.

HIDDEN SWITCH CONTROLLED CARJACK:

This configuration will enable the vehicle owner to activate a Carjack countdown by pressing a hidden push-button (not included with kit) during a Carjack situation. A Carjack countdown will begin under the following conditions: Ignition is ON (vehicle is running), the push-button is pressed, and the door opens/closes. Upon these 3 events, in that order, the alarm will start a Carjack countdown. After a delay of one minute, the system will begin chirping for 20 seconds then trigger into a full cycle for up to 5 minutes. To reset this Carjack mode, Ignition must be ON then press and hold the override/valet button for 5 seconds (until LED goes out.)

FULL-TIME [Permanent] CARJACK WITH IGNITION ON:

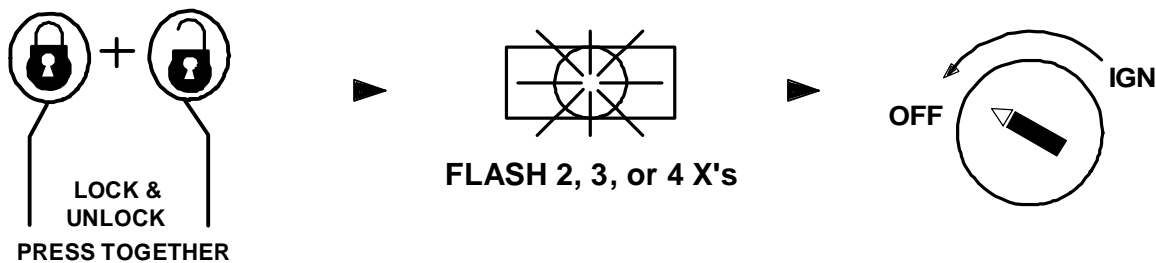
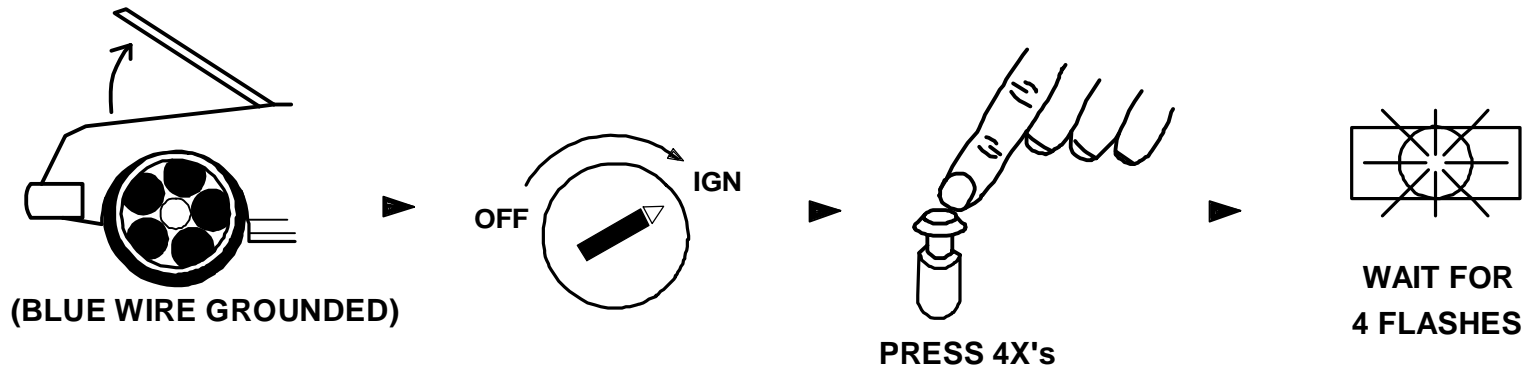
We recommend that this configuration only be used in serious situations. When the Ignition is on (vehicle is running), anytime a door is opened the Carjack countdown sequence will be initiated. There will be 2 light flashes and the LED will change from solid to quick pulsing as confirmation of a countdown sequence. To reset FULL TIME Carjack, the Ignition has to be ON, then press and hold the override/program button 5 seconds until LED stops pulsing. The LED will be on SOLID when in this mode anytime the Ignition is ON (or while driving) as a reminder that Carjack is waiting for a door to open.

TRANSMITTER PROGRAMMING

Note: Remotes Transmitters come pre-programmed from the Factory. When re-learning remotes or adding remotes, ALL your system's remote codes must be learned at time of programming!! This system allows storage of up to 4 different remote codes in memory.

1. Open hood (ground the Blue hood pin wire if no hood pin is installed.)
2. Turn key to the ON position. (Starting the vehicle is not necessary.)
3. Press Program/Valet button 4 times. After a few seconds, the unit will flash the parking lights 4 times.
4. Press Button #1 (Lock) & #2 (Unlock) button [at the same time] of the transmitter to be learned. You should get 2 light flashes indicating the code-learn. Press the Lock and Unlock Buttons on a second, third or fourth remote. If all 4 codes are learned, the unit will automatically exit code learning mode, otherwise turn key OFF and close the hood.

NOTES: When learning pager remotes, wait for a beep confirmation tone from the remote before learning another remote. When learning 1-way "Sidekick" remotes, you do not have to wait. The system will not flash the lights after learning the 4th remote code.



PAGER REMOTE BATTERY REPLACEMENT

CS-2012TW1 PAGER (LOW BATTERY WARNING)

The CS-2012TW1 Pager LED has a low battery warning system. When the battery voltage is low, the Orange & Green LEDs flash 6 times with any button that is pressed. We recommend replacing the battery for proper operation. To replace the battery, simply unlock and slide open the battery door on the back of the LED remote. Carefully remove the low battery, then insert a new battery (AAA) using the outline on the button of the battery compartment as a guide. Your remote will beep 3 times when the battery is inserted correctly.

NOTE:

Carefully insert the new battery. If done correctly the remote will beep 3X when the new battery installed. If the remote does not beep or respond after replacing the battery, remove the battery and re-insert.

TROUBLESHOOTING: “BEFORE YOU CALL SECTION”

Before calling your dealer or Crimestopper, read the following for tips that may remedy the problem.

RANGE QUESTIONS (2-Way Pager/Remote):

Your CS-2012TW1 system uses Am & FM High-Frequency signals to send/receive data between the pager and the vehicle and from the vehicle to the remote for state-of-the-art operation.

- 1) Under normal operation, the distance from the vehicle-paging-the-remote will be greater than that from the remote-to-the-vehicle. This is due to power supplies. The main control module (brain) in the vehicle is connected to the electrical wiring receiving power from the vehicle battery, whereas the remote/pager is operating from the 3V Lithium battery. This is a normal feature for a 2-Way paging system.
- 2) Your system is designed to always operate with maximum efficiency, however range may be affected by the following circumstances: Physical Distance, Obstructions, and RF/Electronic Interference. (On US/Domestic systems, power output is limited by Govt. FCC Regulations/Specifications.)
- 3) This CS-2012TW1 system does NOT use “Paging” or “Cellular” antenna service. There are no monthly fees associated with its operation. The CS-2012TW1 unit in the vehicle sends a paging signal directly to your pager/remote from its own antenna mounted inside the vehicle.

SYSTEM IS UNSUCCESSFUL AT REMOTE START DURING EXTREME COLD CONDITIONS:

Please be aware that during sub-freezing conditions your remote starter may take more than one attempt to start, or it may not successfully start the vehicle after 3 attempts. During these conditions the vehicle may not properly start even using the key, therefore trying to start by the remote would also be unsuccessful.

SYSTEM LED FLICKERS WHEN PRESSING REMOTE CONTROL BUTTONS:

This is normal operation. There may be a slight flicker visible from the LED when pressing the remote as the system is authorizing the code from the remote control. There is nothing wrong with your system.

UNIT CHIRPS 3X, FLASHES LIGHTS ONCE, BUT WILL NOT ATTEMPT A REMOTE START:

1. The system may sense a fault if the vehicle hood is up or open (Blue wire grounded). [Assuming you are using a grounding hoop pin or switch that is connected to the Blue wire of the system. This is a safety feature of the unit. Make sure hood is closed or that the Blue hood pin wire is not shorted to Ground.
2. The system may sense a fault at the Brake (White wire is active) check installation for faults and verify the +12V Brake input is not active unless the brake is pressed.

TROUBLESHOOTING cont.

UNIT FLASHES THE LIGHTS ONCE AND WILL NOT ATTEMPT A REMOTE START:

The system is in Valet mode. Check the systems LED light and if it is on solid Red LED (with doors closed) then the system is in VALET mode. To exit VALET, turn the Ignition on, press and hold valet/programming button for about 5 seconds until LED goes out. Unit is now out of valet mode and should perform a remote start.

SYSTEM DOES NOT RESPOND TO THE REMOTE CONTROL:

1. Check for proper power/ground wiring connections of the alarm.
2. Check Antenna Module connection. The antenna included with this system must be plugged in to send/receive signals as the Antenna Module gets voltage from the main control module. See antenna diagram section in Installation Manual. NOTE the color of the antenna harness connectors must match with the colors of the sockets i.e. Blue plug into the Blue socket and Black plug into the Black socket.
3. The Remote may need a new battery or need to be reprogrammed to operate the system. See "Transmitter programming" for more information.

CRIMESTOPPER

www.crimestopper.com
email@crimestopper.com
Phone (800) 998-6880
FAX (805) 581-9500

© 2005 Crimestopper Security Products

TechWeb

ONLINE TECHNICAL SUPPORT
www.crimestopper.com/techweb03.html