

Impreza WRX® | WRX STI®

ENGINE AND DRIVETRAIN	WRX AND WRX PREMIUM	WRX STI
Engine	2.5-liter DOHC intercooled, turbocharged aluminum-alloy 16-valve 4-cylinder horizontally opposed SUBARU BOXER® engine.	
Power	265 hp @ 6,000 rpm	305 hp @ 6,000 rpm
Torque	244 lb-ft @ 4,000 rpm	290 lb-ft @ 4,000 rpm
Compression ratio	8.4:1	8.2:1
Bore and stroke	99.5 x 79.0 mm	
Valve timing	Active Valve Control System (AVCS)	Dual Active Valve Control System (DAVCS)
Intake system	Turbocharger with intercooler. Maximum boost pressure: 13.3 psi.	Turbocharger with high-cross-flow-design intercooler. Maximum boost pressure: 14.7 psi.
Fuel and ignition system	Sequential multiport fuel injection. Electronic Throttle Control (ETC). Engine management with integrated self-diagnostics and adaptive driving habits capability. Direct ignition.	
SI-DRIVE performance management system	Not available	Subaru Intelligent Drive (SI-DRIVE) enables three distinctively different modes of vehicle performance characteristics by regulating the engine control unit (ECU) and by fine-tuning the electronically controlled throttle.
Transmission	Fully synchronized 5-speed manual with Incline Start Assist	Fully synchronized close-ratio 6-speed manual with Incline Start Assist
Emissions	Certified Low Emission Vehicle (LEV2)	
FUEL		
Fuel economy (city/highway) ¹	18/25 mpg	17/23 mpg
Fuel requirement	Premium unleaded gasoline (91 octane) required. 93 octane recommended (WRX STI).	

SYMMETRICAL ALL-WHEEL DRIVE

Continuous All-Wheel Drive	WRX models utilize a viscous-type locking center differential with torque distribution normally configured at a 50/50-split front-to-rear. If wheel speed differs between front and rear axles, the system helps distribute power to the wheels with the most traction.	
Driver Controlled Center Differential (DCCD) All-Wheel Drive	Exclusive to WRX STI, Driver Controlled Center Differential (DCCD) All-Wheel Drive uses an electronically managed multi-plate transfer clutch and a mechanical limited-slip differential in conjunction with a planetary-gear-type center differential to control power distribution between the front and rear wheels. Featuring manual and three automatic modes, DCCD splits power 41% front and 59% rear. Sensors monitor parameters such as wheel slippage, steering angle, throttle position and braking to help determine torque distribution and direct it to the wheels with optimum traction. DCCD also features a limited-slip helical front and Torsen® rear differential.	

STABILITY AND TRACTION

Vehicle Dynamics Control (VDC)	VDC electronic stability control utilizes sensors which constantly monitor wheel speed, steering angle, brake pressure, vehicle yaw rate and lateral g-forces. If VDC detects a difference between the driver's intended path and the one the vehicle is actually taking, VDC applies braking power and/or reduces engine torque to help correct vehicle path. Exclusive to WRX STI, VDC features Standard, Off and performance-oriented Traction modes.	
Traction Control System (TCS)	VDC also incorporates an all-wheel, all-speed traction control system which, when sensing a loss of traction, applies braking force and reduces engine torque to the slipping wheel or wheels as necessary to maintain vehicle motion.	

CHASSIS

Steering	Engine-speed-sensing variable power-assisted rack-and-pinion. Turning circle, WRX : 35.4 feet. WRX STI : 36.1 feet.	
Suspension	Sport-tuned 4-wheel independent suspension. Front : Strut-type with lower L-arm. Rear : Double wishbone. Front and rear stabilizer bars.	High-performance sport-tuned 4-wheel independent suspension. Front : Inverted-strut-type with aluminum-alloy lower L-arm. Rear : Double wishbone. Front and rear stabilizer bars.
Brakes	4-wheel disc, ventilated front. Dual-piston front and single-piston rear calipers. 4-channel, 4-sensor ABS with Electronic Brake-force Distribution (EBD). Front : 11.6 inches/ Rear : 11.3 inches	Brembo® performance braking system. 4-wheel disc, ventilated front and rear. 4-piston front and dual-piston rear calipers. 4-channel, 4-sensor Super Sport ABS with Electronic Brake-force Distribution (EBD). Front : 12.8 inches/ Rear : 12.4 inches
Brake Assist	When emergency braking is detected by how quickly the brake pedal is pressed, maximum brake pressure is immediately applied.	

WHEELS AND TIRES

Wheels	17 x 7.0-inch 10-spoke aluminum-alloy. Gray color.	18 x 8.5-inch 5-spoke aluminum-alloy. High-luster silver finish. Optional 18 x 8.5-inch 18-spoke BBS® aluminum-alloy. Silver or gold color. ²
Tires	225/45 R17 summer-performance	245/40 R18 93W ultra-high-performance

EXTERIOR DIMENSIONS

	WRX 4-DOOR	WRX 5-DOOR	WRX STI 5-DOOR
Length/Width/Height	180.3 inches/68.5 inches/58.1 inches	173.8 inches/68.5 inches/58.1 inches	173.8 inches/70.7 inches/58.1 inches
Wheelbase	103.1 inches	103.1 inches	103.3 inches
Track (front/rear)	58.9 inches/59.3 inches	58.9 inches/59.3 inches	60.2 inches/60.6 inches
Curb weight	WRX : 3,174 lbs WRX Premium : 3,229 lbs	WRX : 3,175 lbs WRX Premium : 3,229 lbs	3,395 lbs

INTERIOR DIMENSIONS

Headroom (front/rear)	40.3 inches/37.6 inches (with moonroof: 39.3 inches/37.5 inches)	40.3 inches/37.6 inches (with moonroof: 39.3 inches/37.4 inches)	40.3 inches/37.6 inches
Legroom (front/rear)	43.5 inches/33.5 inches	43.5 inches/33.5 inches	43.5 inches/33.5 inches
Shoulder room (front/rear)	54.8 inches/53.2 inches	54.8 inches/53.2 inches	54.8 inches/53.2 inches
Passenger volume	94.6 cubic feet (with moonroof: 93.0 cubic feet)	94.6 cubic feet (with moonroof: 93.2 cubic feet)	94.6 cubic feet
Cargo volume	11.3 cubic feet	19.0 cubic feet (44.4 cubic feet with rear seat lowered)	19.0 cubic feet (44.4 cubic feet with rear seat lowered)

Impreza WRX | WRX STI Equipment

EXTERIOR	WRX	WRX PREMIUM	WRX STI
Projector low-beam and multireflector high-beam halogen headlights	●	●	–
High-intensity discharge (HID) low-beam and multireflector halogen high-beam headlights	–	–	●
Foglights	–	●	○
L.E.D. taillights (5-door)	●	●	●
Functional hood scoop (feeds turbocharger intercooler)	●	●	●
Front underspoiler	●	●	–
STI-design front bumper with integrated spoiler	–	–	●
Aerodynamic side ground effects	●	●	●
Rear underspoiler (4-door)	●	●	–
Rear bumper with integrated diffuser (5-door)	●	●	●
Rear spoiler	●	●	●
Exhaust system with dual outlets (4-door)	●	●	–
Exhaust system with single outlet (5-door)	●	●	–
STI high-performance-tuned exhaust system with quad stainless-steel outlets	–	–	●
Body-color side mirrors	●	●	●
Heated side mirrors and windshield wiper de-icer	–	●	–
Body-color door handles	●	●	●
Two-speed windshield wipers with variable intermittent mode and mist feature	●	●	●
Single-speed rear window wiper with fixed intermittent mode (5-door)	●	●	●
Power tilt/sliding-glass moonroof	–	●	–

SEATING AND TRIM

6-way manually adjustable driver's seat. 4-way manually adjustable front-passenger's seat.	●	●	●
Performance-design front seats with fixed integrated head restraints, embroidered WRX logos and red stitching	●	●	–
Performance-design front seats with fixed integrated head restraints and embroidered STI logos	–	–	●
Heated front seats	–	●	–
60/40-split flat-folding rear seatback	●	●	●
Leather-wrapped 3-spoke steering wheel with cruise control buttons and red stitching	●	–	–
Leather-wrapped 3-spoke steering wheel with audio system, cruise control buttons and red stitching	–	●	–
STI-design leather-wrapped 3-spoke steering wheel with audio system and cruise control buttons	–	–	●
Leather-wrapped shifter handle	●	●	●
Cloth upholstery	●	●	–
Alcantara®/leather upholstery	–	–	●
Aluminum-alloy pedal covers	●	●	●

CONVENIENCE FEATURES

Power front and rear windows with driver's auto-down	●	●	●
Power side mirrors	●	●	●
Electronic cruise control	●	●	●
Tilt/telescoping steering column	●	●	●
Dual cupholders in center console	●	●	●
Single bottle holder in each door panel	●	●	●
Sun visors with concealed vanity mirrors	●	●	●
Center console with L.E.D.-illuminated storage tray and 12-volt power outlets	●	●	●
Illuminated and lockable glovebox	●	●	●
Footwell illumination lighting	–	–	●
Cargo-area grocery bag and tiedown hooks (5-door)	●	●	●
Retractable/removable cargo-area cover (5-door)	●	●	●

INSTRUMENTATION

Analog speedometer, tachometer, coolant temperature and fuel gauges	●	●	●
Sport-design electroluminescent gauges with center-mounted tachometer	●	●	–
STI sport-design electroluminescent gauges with center-mounted tachometer	–	–	●
Gauge needles full-sweep and trim rings illumination on start-up	●	●	●
Digital trip computer displaying average fuel economy, digital clock and ambient temperature	●	●	●
DCCD and SI-DRIVE modes display	–	–	●

AUDIO SYSTEMS

4-speaker audio system with single-disc in-dash CD player and MP3/WMA capability	●	–	–
10-speaker audio system with 6-disc in-dash CD changer, MP3/WMA capability and SRS Circle Surround Automotive® audio enhancement	–	●	●
Auxiliary audio jack	●	●	●
XM® or SIRIUS® Satellite Radio capability ³	●	●	●

CLIMATE CONTROL	WRX	WRX PREMIUM	WRX STI
Automatic climate control system with CFC-free air conditioning and rotary controls for temperature, fan and airflow direction	•	•	•
SECURITY			
Keyless entry system with answer-back electronic chirp	•	•	•
Antitheft security system	•	•	•
Engine immobilizer	•	•	•
SAFETY			
ACTIVE			
Subaru Symmetrical All-Wheel Drive (AWD)	•	•	•
SUBARU BOXER engine	•	•	•
Vehicle Dynamics Control (VDC)	•	•	•
Traction Control System (TCS)	•	•	•
Brake Assist	•	•	•
4-wheel antilock braking system (ABS) with Electronic Brake-force Distribution (EBD)	•	•	•
Tire Pressure Monitoring System (TPMS)	•	•	•
Daytime Running Lights (DRL)	•	•	•
PASSIVE			
Dual driver's and front-passenger's front airbags (SRS) ⁴	•	•	•
Subaru advanced frontal airbag system (SRS) ⁴	•	•	•
Side-curtain airbags protecting front and rear outboard occupants (SRS) ⁴	•	•	•
Seat-mounted front side-impact airbags (SRS) ⁴	•	•	•
Height-adjustable 3-point front seatbelts with pretensioners and force limiters. 3-point seatbelts at all rear seating positions.	•	•	•
Rear child-safety door locks	•	•	•
Safety pedal system	•	•	•
Energy-absorbing collapsible steering column	•	•	•
Ring-shaped reinforcement frame body structure	•	•	•
OPTIONAL EQUIPMENT			
Satellite Radio and Navigation Package: Touch-screen GPS navigation system with 7-inch high-resolution screen and auxiliary inputs for portable multimedia devices, 10-speaker audio system with single-disc in-dash CD player and Audyssey MultEQ [®] audio enhancement, SIRIUS [®] Satellite Radio ³ and Bluetooth [®] wireless capability, ⁵ multifunction screen displaying navigation system information and trip computer (current and average fuel economy, driving range, calculator and maintenance indicator)	-	◦	-
18-inch BBS 18-spoke aluminum-alloy wheels and foglights	-	-	◦
18-inch BBS 18-spoke aluminum-alloy wheels and foglights, touch-screen GPS navigation system with 7-inch high-resolution screen and auxiliary inputs for portable multimedia devices, 10-speaker audio system with single-disc in-dash CD player and Audyssey MultEQ [®] audio enhancement, Bluetooth wireless capability, ⁵ multifunction screen displaying navigation system information and trip computer (current and average fuel economy, driving range, calculator and maintenance indicator)	-	-	◦

• Standard ◦ Optional - Not available

Colors

Paint



Satin White Pearl



Spark Silver Metallic



Lightning Red



WR Blue Mica

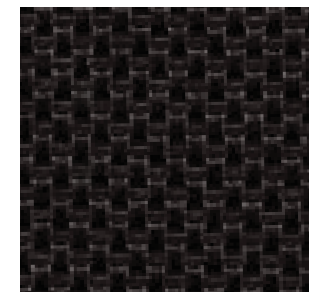


Dark Gray Metallic



Obsidian Black Pearl

Upholstery



Carbon Black Checkered Cloth (CBCC)



Graphite Gray Alcantara[®]/
Carbon Black Leather (GGA)

Impreza WRX Color Combinations

PAINT	WRX and WRX Premium	WRX STI
Satin White Pearl	CBCC	GGA
Spark Silver Metallic	CBCC	GGA
Lightning Red	CBCC	GGA
WR Blue Mica	CBCC	GGA
Dark Gray Metallic	CBCC	GGA
Obsidian Black Pearl	CBCC	GGA

¹ 2009 EPA fuel economy estimates. Actual mileage may vary. ² Silver color with Spark Silver Metallic, Lightning Red, Dark Gray Metallic and Obsidian Black Pearl. Gold color with Satin White Pearl and WR Blue Mica.

³ Available as an accessory. Satellite radio hardware and required monthly subscription sold separately. See your dealer. SIRIUS Satellite Radio hardware standard (required monthly subscription sold separately) on WRX Premium when equipped with optional navigation system. ⁴ The Supplemental Restraint System (SRS) affords the driver and the front passenger additional protection in moderate to severe frontal and side-impact collisions and outboard 2nd-row passengers additional protection in moderate to severe side-impact collisions. This system provides supplemental protection only, and seatbelts must be worn in order to avoid injuries to out-of-position occupants upon airbag deployment and to provide the best combined protection in a serious accident. Children should always be properly restrained in one of the rear seats. See Owner's Manual for recommended seating position. ⁵ Requires accessory microphone. See your dealer.

Some images shown are for illustration purposes only. Specifications in this brochure are based on the latest product information available at the time of publication. For the most up-to-date product information, log on to subaru.com. Some equipment shown in photography in this brochure is optional at extra cost. Specific options may be available only in combination with other options. Specific combinations of equipment or features may vary from time to time and by geographic area. Certain accessories and equipment may not be available at the time of publication. Subaru of America, Inc., reserves the right to change or discontinue at any time, without notice, prices, colors, materials, equipment, accessories, specifications, models and packages without incurring any obligation to make the same or similar changes on vehicles previously sold. Colors shown may vary due to reproduction and printing processes.

This brochure was prepared by Subaru of America, Inc. A warranty from Subaru of America, Inc., is available only on cars sold to the first retail purchaser through an authorized Subaru dealer in the continental U.S. or Alaska. Subaru, SUBARU BOXER, Added Security, Impreza, STI and WRX are registered trademarks. iPod is a registered trademark of Apple Inc. SRS Circle Surround Automotive is a registered trademark of SRS Labs, Inc. Audyssey MultEQ is a registered trademark of Audyssey Laboratories, Inc. Brembo is a registered trademark of Freni Brembo S.p.A. Alcantara is a registered trademark of Alcantara S.p.A. and Alcantara is produced by Toray Group. TORSEN is a registered trademark of JTEKT Corporation. BBS is a registered trademark of BBS Kraftfahrzeugtechnik AG. XM is a registered trademark of XM Satellite Radio Inc. SIRIUS is a registered trademark of Sirius Satellite Radio Inc. Bluetooth is a registered trademark of Bluetooth SIG, Inc. HomeLink is a registered trademark of Prince Corporation, a wholly owned subsidiary of Johnson Controls. For more information, contact your Subaru dealer or log on to subaru.com.