

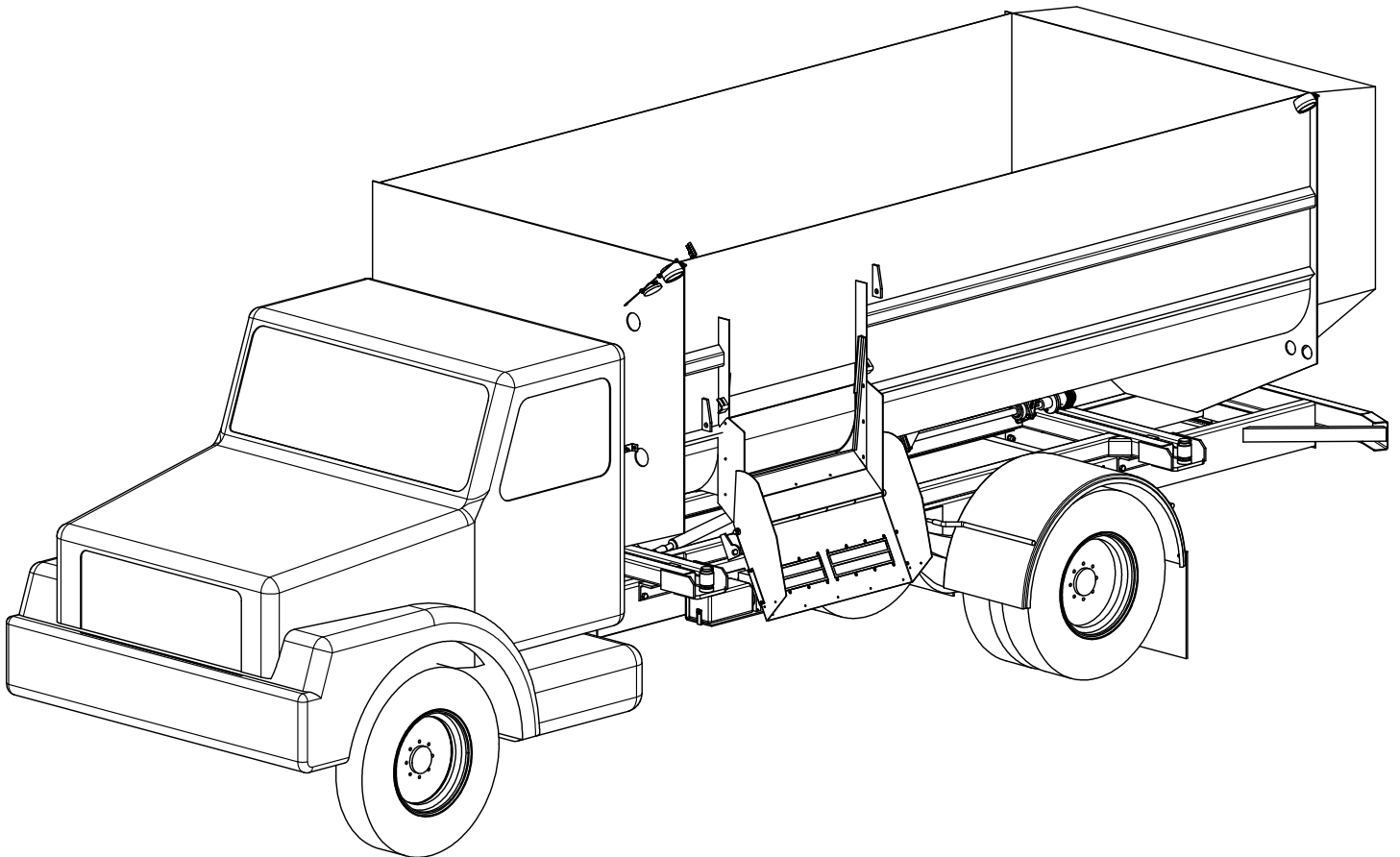


QUALITY PEOPLE, QUALITY PRODUCTS

TURBO-MAX

6056 TRUCK

OPERATORS MANUAL



ASSEMBLY
CALIBRATION
OPERATION
REPLACEMENT PARTS

READ COMPLETE MANUAL CAREFULLY
BEFORE ATTEMPTING OPERATION

Sioux Automation Center, Inc. • 877 1st Ave NW • Sioux Center, IA 51250
PH: (712-722-1488) • Toll Free: 1-866-722-1488
www.siouxautomation.com

INTRODUCTION

Thank you for purchasing a Turbo-Max Mixer Truck. We feel you have made a wise choice and hope you are completely satisfied with your new piece of equipment. Your new Turbo-Max Mixer Truck is a durable, efficient and easy to use unit. Proper care and use will result in many years of service.



WARNING: TO AVOID PERSONAL INJURY OR DEATH, OBSERVE FOLLOWING INSTRUCTIONS:

Never overload mixer. Rating of gear or rating of tires, whichever is less.

Ensure that anybody present is clear before applying power to any machinery used in conjunction with wagon box or when moving box.

Never allow anyone in, near, or on mixing chamber during mixing, transporting, or unloading of feed.

GENERAL INFORMATION

1. Unless otherwise specified, high-strength (grade5) (3 radial-line head markings) hex head bolts are used throughout assembly of this piece of equipment.
2. Whenever terms “**LEFT**” and “**RIGHT**” are used in this manual it means from a position behind wagon box and facing forward.
3. When placing a parts order, refer to this manual for proper part numbers and place order by **PART NO. and DESCRIPTION.**
4. Read assembly instructions carefully. Study assembly procedures and all illustrations before you begin assembly. Note which parts are used in each step. This unit must be assembled in proper sequence or complications will result.

Table of Contents

General Information	2
Safety , Signal Words.....	3
Equipment Safety Guidelines.....	4
Lighting and Marking.....	4
Safety Sign Care	4
Tire Safety	5
Before Operation.....	5
During Operation.....	5-7
Following Operation	7
Highway and Transport Operations.....	7-8
Performing Maintenance	8
Bolt Torque	9
Mixer Setup	10
Mixer Operation.....	11-12
Inspections and Adjustments	13
Lubrication Schedule.....	14
Decal Location	15
Oilbath Assembly	16
Reel & Auger Assembly.....	17
Final Assembly	18-19
Options.....	20
Discharge Breakdown	
Slide Tray	21
Slide Tray (used on serial #)	21
Hydraulic Breakdown	
Electric Selector Valve for Slide Tray	22
Switchbox Assembly	
Toggle Switch Assembly.....	23
Joystick Assembly	23
Driveline Assembly.....	24-25
General Specifications	26
Warranty.....	27

SAFETY

TAKE NOTE! THIS SAFETY ALERT SYMBOL FOUND THROUGHOUT THIS MANUAL IS USED TO CALL YOUR ATTENTION TO INSTRUCTIONS INVOLVING YOUR PERSONAL SAFETY AND SAFETY OF OTHERS. FAILURE TO FOLLOW THESE INSTRUCTIONS CAN RESULT IN INJURY OR DEATH!



SAFETY, SIGNAL WORDS

THIS SYMBOL MEANS

ATTENTION

BECOME ALERT

YOUR SAFETY IS INVOLVED!

SIGNAL WORDS

Note: use of following signal words **DANGER**, **WARNING**, and **CAUTION** with safety messages. Appropriate signal word for each has been selected using following guidelines:

WARNING:

Indicates a potentially hazardous situation that, if not avoided, could result in serious injury or death, and includes hazards that are exposed when guards are removed. It may also be used to alert against unsafe practices.

DANGER:

Indicates an imminently hazardous situation that, if not avoided, will result in serious injury or death. This signal word is to be limited to most extreme situations typically for machine components which, for functional purposes, cannot be guarded.

CAUTION:

Indicates a potentially hazardous situation that, if not avoided, may result in minor or moderate injury. It may also be used to alert against unsafe practices.



SAFETY...YOU CAN LIVE WITH IT

EQUIPMENT SAFETY GUIDELINES

Every year many accidents occur which could have been avoided by a few seconds of thought and a more careful approach to handling equipment. You, the operator, can avoid many accidents by observing the following precautions in this section. To avoid personal injury, study the following precautions and insist those working with you, and you yourself, follow them.

In order to provide a better view, certain illustrations in this manual may show an assembly with a safety shield removed. However, equipment should never be operated in this condition. Keep all shields in place. If shield removal becomes necessary for repairs, replace shield prior to use.

Replace any caution, warning, danger or instruction safety decal that is not readable or is missing. Location of such decals is indicated in this booklet.

Do not attempt to operate this equipment under the influence of alcohol or drugs.

Review safety instructions with all users annually.

Operator should be a responsible adult. **DO NOT ALLOW PERSONS TO OPERATE OR ASSEMBLE THIS UNIT UNTIL THEY HAVE DEVELOPED A THOROUGH UNDERSTANDING OF SAFETY PRECAUTIONS AND HOW IT WORKS.**

Do not paint over, remove, or deface any safety signs or warning decals on your equipment. Observe all safety signs and practice instructions on them.

Never exceed limits of a piece of machinery. If its ability to do a job, or to do so safely is in question **DON'T TRY IT.**



LIGHTING AND MARKING

It is the responsibility of customer to know lighting and marking requirements of local highway authorities and to install and maintain equipment to provide compliance with regulations. Add extra lights when transporting at night or during periods of limited visibility.

Lighting kits are available from your dealer or from manufacturer.



SAFETY SIGN CARE

- Keep safety signs clean and legible at all times.
- Replace safety signs that are missing or have become illegible.
- Replaced parts that displayed safety signs should also display current safety signs.
- Safety signs are available from your distributor, dealer parts department, or factory.

How to install safety signs:

- Be sure that installation area is clean and dry.
- Decide on exact position before you remove backing paper.
- Remove smallest portion of split backing paper.
- Align decal over specified area and carefully press small portion with exposed sticky backing in place.
- Slowly peel back remaining paper and carefully smooth remaining portion of decal into place.
- Small air pockets can be pierced with a pin and smoothed out using piece of decal backing paper.



TIRE SAFETY

- Failure to follow proper procedures when mounting a tire on a rim can produce an explosion which may result in a serious injury or death.
- Do not attempt to mount a tire unless you have proper equipment and experience to do job.
- Inflating or servicing tires can be dangerous. Whenever possible, trained personnel should be called to service and/or mount tires.
- Always order and install tires and wheels with appropriate type and load capacity to meet or exceed anticipated weight to be placed on the equipment.



REMEMBER

Your best assurance against accidents is a careful and responsible operator. If there is any portion of this manual or function you do not understand, contact your local authorized dealer or manufacturer.



BEFORE OPERATION:

- Carefully study and understand this manual.
- Do not wear loose-fitting clothing which may catch in moving parts.
- Always wear protective clothing and substantial shoes.
- It is recommended that suitable hearing and eye protection be worn.
- Operator may come in contact with certain materials which may require specific safety equipment relative to handling of such materials.
- Keep wheel and lug nuts tightened to specified torque.
- Assure that truck tires are inflated evenly.
- Give unit a visual inspection for any loose bolts, worn parts, or cracked welds, and make necessary repairs. Follow maintenance safety instructions included in this manual.
- Be sure there are no tools lying on or in equipment
- Do not use unit until you are sure that area is clear, especially around children and animals.
- Don't hurry learning process or take unit for granted. Ease into it and become familiar with your new equipment.
- Practice operation of your equipment and its attachments. Completely familiarize yourself and other operators with its operation before using.
- Make sure that brakes are evenly adjusted (if equipped with brakes).
- Fasten your seat belt prior to starting the engine.



DURING OPERATION

- Beware of bystanders, **PARTICULARLY CHILDREN!** Always look around to make sure that it is safe to start engine of towing vehicle or move unit. This is particularly important with higher noise levels and quiet cabs, as you may not hear people shouting.
- **NO PASSENGERS ALLOWED-** Do not carry passengers anywhere on or in tractor or equipment.



DURING OPERATION

- Keep hands and clothing clear of moving parts.
- Do not clean, lubricate, or adjust your equipment while it is moving.
- When halting operation, even periodically, set vehicle brakes, disengage PTO, shut off engine, and **remove ignition key**.
- Be especially observant of operating area and terrain. Watch for holes, rocks, or other hidden hazards. Always inspect area prior to operation.
 - DO NOT operate near edge of drop-off or banks.
 - DO NOT operate on steep slopes as overturn may result.
 - Operate up and down (not across) intermediate slopes. Avoid sudden starts and stops.
- Pick the most level possible route when transporting across fields. Avoid edges of ditches, gullies, and steep hillsides.
- Be extra careful when working on inclines.
- Maneuver truck at safe speeds.
- Avoid overhead wires or other obstacles. Contact with overhead lines could cause serious injury or death.
- Avoid loose gravel, rocks, and holes; they can be dangerous for equipment operation or movement.
- Allow for unit length when making turns.
- Do not walk or work under raised components or attachments unless securely positioned and blocked.
- Keep all bystanders, pets, and livestock clear of work area.
- Operate towing vehicle from operators seat only.
- Never stand alongside of unit with engine running or attempt to start engine and/or operate machine while standing alongside of unit.
- Never leave running equipment unattended.
- As a precaution, always recheck hardware on equipment following every 100 hours of operation. Correct all problems. Follow maintenance safety procedures.
- Never hand feed materials into mixer while it is running. Rotating augers inside mixer may not be visible from the loading point, and may cut or grab hands, clothing, or material being loaded, causing severe injury. Always stop tractor engine before hand loading materials.
- No not allow operation of this unit by inexperienced or unqualified people. Keep all unqualified people away from mixer during operation. Operators of this unit must be alert and use good judgement at all times. Operator should not climb on ladder or any part of the mixer when loading, mixing, or discharging material.
- Be sure the inside of the mixer is clear of any obstruction before operating and that all shields are in place. This includes any truck and driveline shields. Repair or replace any damaged or missing shielding. Exposed shafting can grab hands and clothing and cuase severe injury or death.

- Use caution when working around the discharge area. Stay clear of slide tray. This is controlled from the truck and could operate without warning, creating pinch points which could cause severe injury or death. Always disengage the PTO, stop the truck's engine and remove the truck's ignition key before working close to the discharge area.
- Never attempt to release jammed materials or clean materials from any area of the mixer or discharge chute without disengaging the PTO and stopping the truck's engine first. Moving parts can be hidden by materials, and stopped parts can start unexpectedly, causing severe injury. Always disengage the PTO, stop the truck's engine and remove the truck's ignition key before attempting to remove jammed material or to clean the mixer.
- Never put arms or feet inside unit, power chute, or discharge door opening, nor climb on or in the mixer while it is running. NEVER allow anyone to position themselves over or near the top of the mixer while it is running. Rotating augers, and sprockets can grab clothing or create pinch points which can cause severe injury or death to the operator or bystanders. Always disengage the PTO and turn off truck engine so that the mixer cannot be accidentally turned on while inspecting, servicing, repairing, or cleaning the mixer.



FOLLOWING OPERATION

- Following operation disengage PTO, set brakes, shut off engine and **remove ignition key**.
- Store unit in an area away from human activity.
- Do not park equipment where it will be exposed to livestock for long periods of time. Damage and livestock injury could result.
- Do not permit children to play on or around stored unit.
- Make sure all parked machines are on a hard, level surface and engage all safety devices.
- Wheel chocks may be needed to prevent unit from rolling.



HIGHWAY AND TRANSPORT OPERATIONS

- If equipment is going to be transported on a public highway, always follow state and local regulations. Be sure to check with local law enforcement agencies for your own particular regulations. the end user is responsible for federal, state and local vehicle safety regulation compliance (ex: requirements for weight, lighting, etc.)
- Adopt safe driving practices:
 - Keep brake pedals latched together at all times. **NEVER USE INDEPENDENT BRAKING WITH MACHINE IN TOW, LOSS OF CONTROL AND/OR UPSET OF UNIT CAN RESULT.**
 - Always drive at a safe speed relative to local conditions, ensure that your speed is low enough for an emergency stop. Keep speed to a minimum.
 - Reduce speed prior to turns to avoid risk of overturning.
 - Always keep truck's transmission in gear to provide engine braking when going downhill. Do not coast.
 - Do not drink and drive!
- Comply with state and local laws governing highway safety and movement of farm machinery on public roads.
- Use approved accessory lighting, flags and necessary warning devices to protect operators of other vehicles on highway during transport. Various safety lights and devices are available from your dealer.
- Plan your route to avoid heavy traffic.

- Be a safe and courteous driver. Always yield to oncoming traffic in all situations, including narrow bridges, intersections, etc.
- Be observant of bridge load ratings. Do not cross bridges rated lower than gross weight at which you are operating.
- Watch for obstructions overhead and side to side while transporting.
- Always operate equipment in a position to provide maximum visibility. Make allowances for increased length and weight of equipment when making turns, stopping unit, etc.



PERFORMING MAINTENANCE

- Good maintenance is your responsibility. Poor maintenance is an invitation to trouble.
- Make sure there is plenty of ventilation. Never operate engine in a closed building. Exhaust fumes may cause asphyxiation.
- Before working on this machine, stop vehicle, set brakes, shut off engine and **remove ignition key**.
- Always use safety support and block wheels. Never use a jack to support machine.
- Always use proper tools or equipment for job at hand.
- Use extreme caution when making adjustments.
- Follow torque chart in this manual when tightening bolts and nuts.
- Never use your hands to locate a hydraulic leak on attachments. Use a small piece of cardboard or wood. Hydraulic fluid escaping under pressure can penetrate skin.
- Openings in skin and minor cuts are susceptible to infection from hydraulic fluid. **Without immediate medical treatment, serious infection and reactions can occur.**
- When disconnecting hydraulic lines, shut off hydraulic supply and relieve all hydraulic pressure.
- Replace **all shields** and **guards** after servicing and before moving.
- After servicing, be sure all tools, parts and service equipment are removed.
- Do not allow grease or oil to build up on any steps or platform.
- When replacing bolts, refer to owners manual.
- Refer to bolt torque chart for head identification marking.
- Where replacement parts are necessary for periodic maintenance and servicing, genuine factory replacement parts must be used to restore your equipment to original specifications. Manufacturer will not claim responsibility for use of unapproved parts or accessories and other damages as a result of their use.
- If equipment has been altered in any way from original design, manufacturer does not accept any liability for injury or warranty.
- A fire extinguisher and first aid kit should be kept readily accessible while performing maintenance on this equipment.

BOLT TORQUE

TORQUE DATA FOR STANDARD NUTS, BOLTS, AND CAPSCREWS.

Tighten all bolts to torques specified in chart unless otherwise noted. Check tightness of bolts periodically, using bolt chart as guide. Replace hardware with same grade bolt.

NOTE: Unless otherwise specified, high-strength Grade 5 hex bolts are used throughout assembly of equipment.



Torque Specifications

Bolt Torque for Standard bolts *

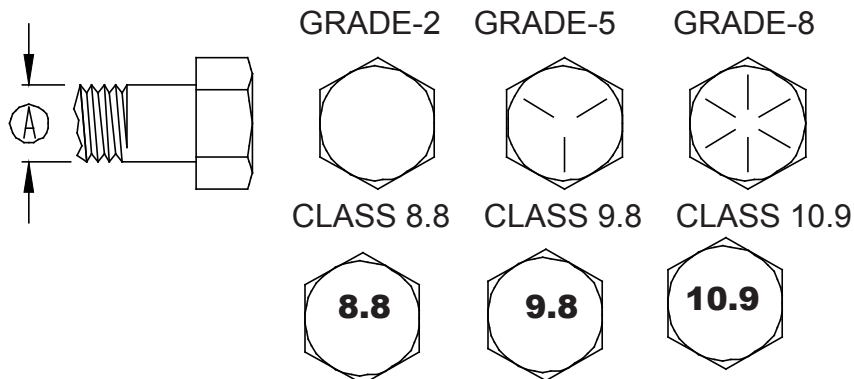
"A"	GRADE 2		GRADE 5		GRADE 8	
	lb-ft	(N.m)	lb-ft	(N.m)	lb-ft	(N.m)
1/4"	6	(8)	9	(12)	12	(16)
5/16"	10	(13)	18	(25)	25	(35)
3/8"	20	(27)	30	(40)	45	(60)
7/16"	30	(40)	50	(70)	80	(110)
1/2"	45	(60)	75	(100)	115	(155)
9/16"	70	(95)	115	(155)	165	(220)
5/8"	95	(130)	150	(200)	225	(300)
3/4"	165	(225)	290	(390)	400	(540)
7/8"	170	(230)	420	(570)	650	(880)
1"	225	(300)	630	(850)	970	(1310)

Bolt Torque for Metric bolts *

"A"	CLASS 8.8		CLASS 9.8		CLASS 10.9	
	lb-ft	(N.m)	lb-ft	(N.m)	lb-ft	(N.m)
6	9	(13)	10	(14)	13	(17)
7	15	(21)	18	(24)	21	(29)
8	23	(31)	25	(34)	31	(42)
10	45	(61)	50	(68)	61	(83)
12	78	(106)	88	(118)	106	(144)
14	125	(169)	140	(189)	170	(230)
16	194	(263)	216	(293)	263	(357)
18	268	(363)	--	--	364	(493)
20	378	(513)	--	--	515	(689)
22	516	(699)	--	--	702	(952)
24	654	(886)	--	--	890	(1206)

Torque figures indicated are valid for non-greased or non-oiled threads and heads unless otherwise specified. Therefore, do not grease or oil bolts or capscrews unless otherwise specified in this manual. When using locking elements, increase torque values by 5%.

* GRADE or CLASS value for bolts and capscrews are identified by their head markings.





MIXER SETUP



To avoid personal injury: The hopper floor may be slippery and the auger can spin unexpectedly when stepped on. Use caution when stepping or standing inside the unit, place a protective cover over the auger knives when work inside the box is required.

POWER CHUTE ADJUSTMENT (OPTIONAL)

- To adjust the height of the power chute, change the length of the link chains on the sides of the chute. For best performance, the unloading height should be set at the lowest height possible. The discharge tip-off on the power chute should be adjusted for correct magnet and discharge angle. Remove or loosen the upper bolts, pivot the tip off to the desired angles and reinstall or retighten all bolts.

MIXER RUN-IN

- Check for proper assembly, adjustment, and lubrication. Check to see that there is adequate oil in the oil bath. If power chute is used, oil the roller chains. Check all bolt and set screws are tight.
- Be sure all shields are properly in place.
- Check for and remove any foreign objects in the mixer hopper and discharge opening.
- Check to see that drain plugs are installed and the door is closed.
- Be sure no one is inside the mixer.
- Test run the mixer.
 - Make sure mixer is empty, then start the mixer.
 - Run for at least five minutes at rated PTO RPM.
 - Raise and lower the door and operate the chute/slide tray several times.
 - Disengage the mixer and turn off the tractor engine and remove driveline.
 - Check the mixer drive components to be sure they are not abnormally hot.

If any of these items are not running as indicated, immediately repair or contact your service representative.



MIXER OPERATION

Always refer to Equipment Safety Guidelines & Before Operation sections of this manual before operating this mixer.



GENERAL

- The Turbo-Max Mixer was designed for blending dairy and beef rations. Most commonly used ingredients, including limited amounts of dry stem hay, can be mixed quickly and uniformly in this mixer. If you have questions regarding your feed ration or have other applications, please contact Sioux Automation Center, Inc.
- The Turbo-Max Mixer mixing performance can vary greatly according to the differences in materials, loading sequence, mixing speed, and unloading methods.



SAFETY

- When the mixer is in operation it has many moving parts which could cause severe injury or death to persons coming in contact with these parts. To help avoid serious accidents, please read and understand this manual.



MIXER OPERATION

LIMITATIONS

- **Do not load hay without** other dry commodities in the mixer first to act as a carrier or “lubricant”.
- **Do not overload hay content**, Sioux Automation Center Inc. recommends up to 15%-20% of hay by weight in the load. Exceeding this percentage can decrease mixing performance or could potentially damage mixer and cause premature wear on driveline components.

WARNINGS

- **Do not use tough hay** (20%-60% moisture) Always use cured, dry hay. Wet hay, foreign objects or overloading may cause binding and damage to the mixer.
- **Keep in mind the overall size of the mixer** to allow clearance through doorways.

MIXING TIME

- The mixer can mix an average load in 3 to 5 minutes. Due to this short mixing time, there is normally no reason to run the mixer during loading except to level the materials or to breakup hay.

MIXING SPEED

- When deciding when and how fast to operate the mixer, factors such as ingredients being used, the thoroughness of the mix, and the time available to mix must be considered. Normal mixing speed is 3/4 to full PTO speed.
- Do not exceed rated PTO speed. When the mixer is operated faster than rated PTO speed the strain on the drive train and mixer is greatly increased.

MATERIAL THAT CAN BE LOADED DIRECTLY INTO THE MIXER

- Many different kinds of materials can be mixed with the Turbo-Max Mixer, but each type has its own unique characteristics.
- Do not exceed rated PTO speed. When the mixer is operated faster than rated PTO speed the strain on the drive train and mixer is greatly increased.
- **FORAGES-** Chopped hay, corn silage, and finely chopped crop residue can be mixed in the mixer. Wet and heavy forages added in large volumes may require more power to mix.
- **GRAINS-** Ground, rolled, flaked, and whole cereal grains, minerals, and concentrates, are all very easily mixed, and can improve the mixing performance of the other materials.
- **LIQUIDS-** Supplements and liquid fat can be blended in the mixer. Some operators prefer adding liquids into the empty mixer, and others add liquids on top of grains or roughage. Sticky liquids such as molasses tend to increase the power requirements.

MATERIALS REQUIRING PREPARATION

- The following feed materials require some preparation or processing to be mixed in the Maxi-Mixer.
 - ALL LONG AND UNCURED GRASSES
 - ROUND BALES, LARGE SQUARE BALES
 - SMALL SQUARE BALES

HAY QUALITY

- **Always use cured dry hay.** Tough hay can cause wrapping, binding and damage to mixer and can adversely effect the mixing performance. The following are some examples that contribute to tough hay conditions: High moisture content, High grass content, High density bales, Outdoor storage, Use of hay preservatives, and Excessive stem length.



MIXER OPERATION

LOADING AND MIXING

- **Prior to loading, check mixer for foreign objects and be sure door is fully closed.**
- 1. **Load Commodities**
 - Adding ingredients like corn, soybean meal, cottonseed, etc. will act as a carrier or “lubricant” if hay is included in the ration.
 - If there are few commodities in the ration, substituting corn silage or haylage is preferred.
 - Fill mixer between 1/3-1/2 full by volume in commodities and forage before adding the hay to the ration. This will allow enough room for the hay to expand and bring feed level up so the top auger can assist in processing.
- 2. **Load Hay**
 - Load processed hay. With the mixer running at 3/4 to full PTO speed, proceed loading the small square bale **pieces** or tub ground hay into the mixer. Do not exceed 15%-20% of hay by weight.
- 3. **Finish Loading Commodities**
 - Finish loading any other ingredients to complete the ration in order of least binding ingredient to most binding. Example: dry commodities first, corn silage second, haylage last.
- 4. **Finish Loading Wet Commodities**
 - Any other wet feeds may be added at this time.
- 5. **Add Liquid Ingredients**
 - If ration includes water, add it last. Adding water at the beginning will cause the hay to bind.

NOTE: DO NOT OVERLOAD MIXER! Overloading causes excessive horsepower requirements, increased strain on driveline and poor mixer performance.

FILL LEVEL

- Do not overload mixer! Overloading causes excessive horsepower requirements, increased strain on mixer drive-line and poor mixer performance.
- The design of the Turbo-Max Mixer requires that there be adequate space to allow the feed to move in and around the reel chamber. If the reel is completely covered, it cannot efficiently mix the materials. The reel cross tubes should **always** be visible at the top of their rotation to allow this mixing space.

UNLOADING

- After the ration has been thoroughly mixed, open the mixer door to begin unloading. If the mixer is equipped with a power chute, the chute must be running before the mixer door can be opened. The combination of the discharge door opening and the mixer speed determines the flow of feed from the mixer. The door must be opened far enough to prevent separation of materials, optional door flow control plates are available to help prevent separation. To stop the flow of feed, close the door, (turn off the power chute) then shut off the mixer.
- The Turbo-Max Mixer can be equipped with either a power chute, or a slide tray to assist in the delivery of feed. The chute and tray heights are adjusted with hydraulic cylinders, but the chain stops provided on power chutes should be adjusted so that the chute clears all bunks, obstacles, etc.

INSPECTION AND ADJUSTMENTS



IMPORTANT! READ BEFORE OPERATING MIXER. IT IS THE RESPONSIBILITY OF THE OWNER TO MAKE SURE THE MIXER IS SET UP PROPERLY. THE FOLLOWING RECOMMENDATIONS SHOULD BE HELPFUL

INSPECT AND ADJUST

- **Roller Chain Tighteners** so they apply sufficient spring tension to keep roller chains running smoothly (As a general rule the thickness of a nickel should fit between the spring coils). The chain will form grooves in the tightener blocks. These grooves help to keep the chains in proper alignment, and the blocks need not be turned unless the roller portion of the chain has worn into the block.
- **Roller Chains** for wear, proper alignment and tension. Adjust or replace if necessary. Roller chain connector links which pass over polyethylene tightener blocks must have the legs of the cotter pins trailing to the direction of rotation.
- **Safety Decals** for readability. If any safety decals are removed, obstructed, or otherwise not understandable, they should be replaced immediately. Keep all decals clean and visible.
- **Safety Shielding** to be sure all shielding is in place and functions properly. Replace all damaged or missing shielding immediately - see parts pages for more information.
- **Bolts and Set Screws** after a few hours of use and each month thereafter. Tighten if necessary.
- **Reel Wipers** plastic strips which help material clean out of the reel hopper. If the strips become bent back, they can be unbolted and turned around or replaced to improve clean out.
- **Upper Auger Knives** can be turned over for use on a new cutting edge and should be periodically sharpened, or replaced if they are no longer sufficiently breaking up material.
- **Lower Auger Round Knives** can be rotated several times before sharpening or replacement is required.
- **Rain can accumulate** in mixer if stored outside, always remove drain plugs on hopper ends to allow unit to drain completely and replace drain plugs before next use.
- **Freezing Weather** the PTO shield requires extra grease to prevent freezing. Snow can accumulate in mixer if stored outside, always remove drain plugs on hopper ends to allow unit to drain completely and check hopper for snow or ice buildup before operating unit. Thaw and remove any obstruction and replace drain plugs before next use.

IMPORTANT: WHEN WELDING ON THIS UNIT: Do NOT allow the current to flow through the bearings, roller chains, or scale weigh bars. Ground directly to the item being welded. **ALWAYS** disconnect weigh bar cords from scale indicator before welding.

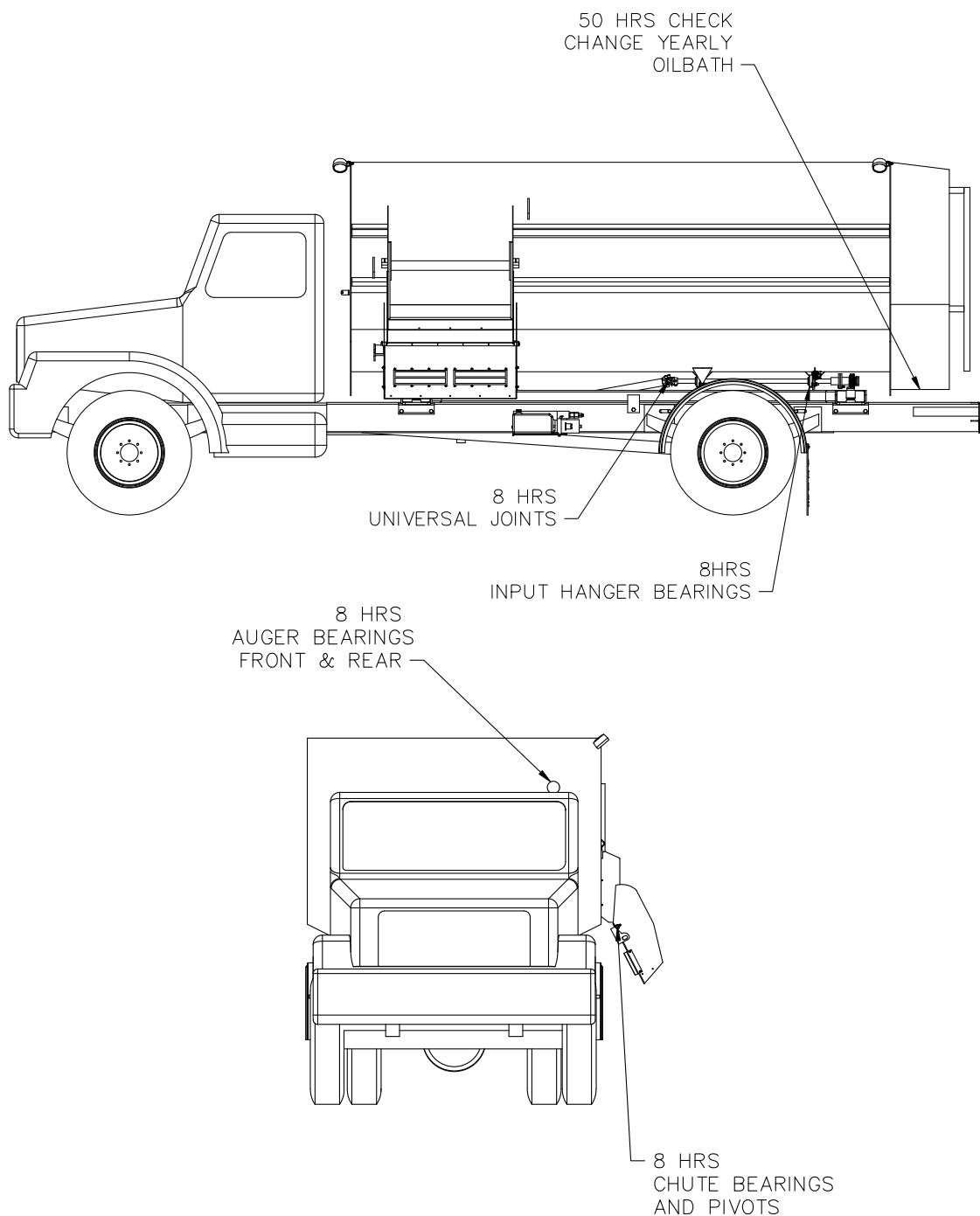
ELECTRONIC SCALES

- **Scale Indicator:** Refer to the electronic scale operators manual for adjustment information. The operator's manual for the Electronic Scales should be kept with this manual. Additional scale manuals may be obtained through Sioux Automation Center, Inc.
- **Load Cells:** Should be kept clean, dry and lubricated to insure dependability.
- **Normal Scale Activity:** Some warm up scale "drift" may occur after the scale is turned on but should zero balance within 10-15 minutes. Scale may zero shift over night due to temperature changes.



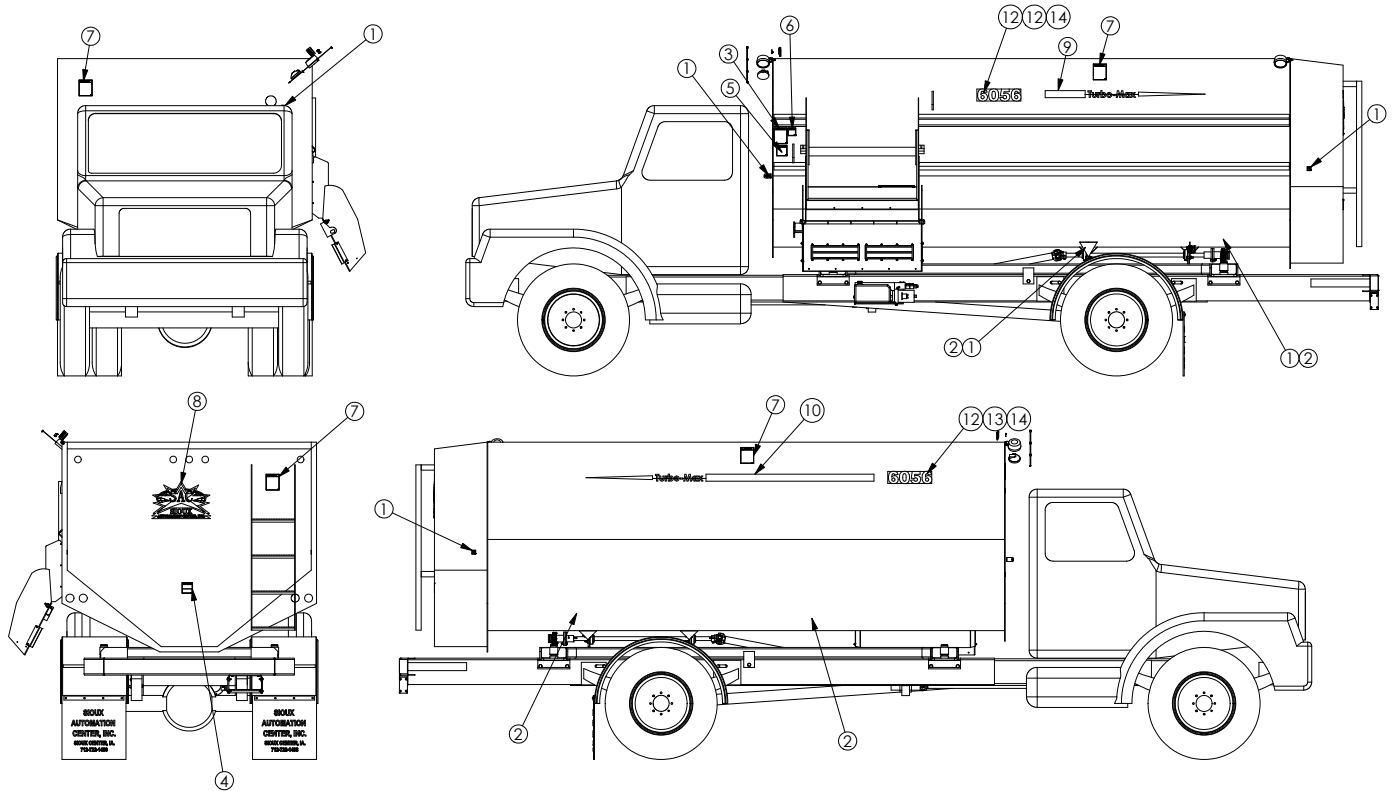
LUBRICATION

- **It is extremely important that the following lubrication schedule be followed:** Bearings: use a good quality multipurpose grease. Replace all damaged or missing grease zerks immediately. Always clean zerks before using grease gun. Pump the grease in slowly until a slight bead forms around the bearing seals. Once a month check lines and connections on grease banks for leaks.
- **Oilbath Oil:** Use a good high quality universal oil. Use an oil that meets or exceeds hydraulic oil grade. Fill to the top lower oilbath roller chains. Change yearly or whenever contaminated.
- **Before operating a new mixer,** the roller chains should be liberally lubricated and then the unit operated under a no-load condition. This break-in period will allow the roller chains to be thoroughly lubricated and thus minimize heat-up during operation.



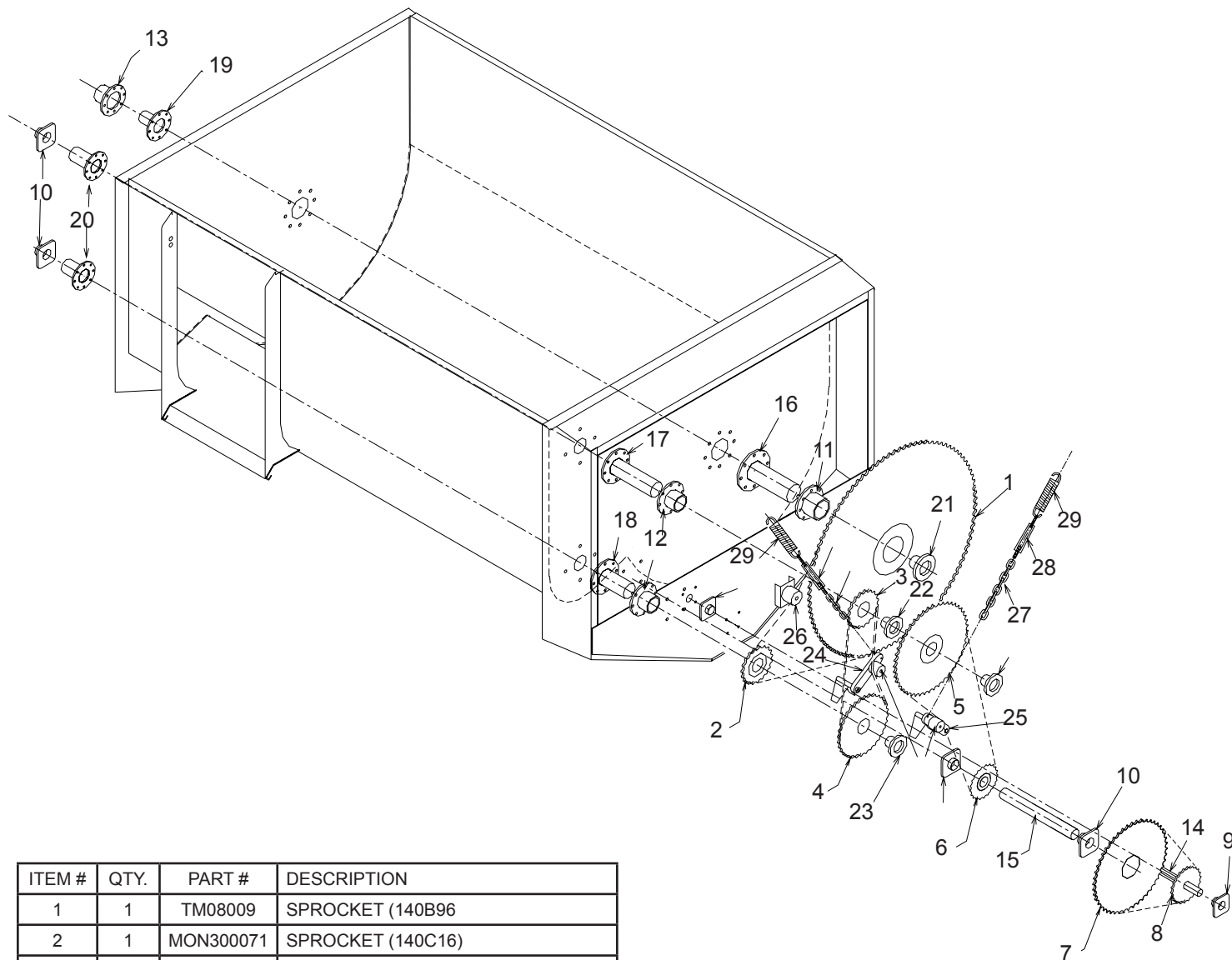


DECAL LOCATION



ITEM #	6046/QTY.	6056/QTY.	6070/QTY.	PART #	DESCRIPTION
1	9	9	9	DEC102	DECAL,GRS,GUN,PICTURE
2	5	5	5	DEC105	DECAL,DANGER,DRVLN,ROTATE
3	1	1	1	DEC106	DECAL,CAUTION,MAN,OWNER,5,6
4	1	1	1	DEC107	DECAL,WARNING,CHAIN,EXPOSED
5	1	1	1	DEC108	DECAL,WARNING,PART,MOVING,4,4
6	1	1	1	DEC109	DECAL,CAUTION,WLD,3,3
7	4	4	4	DEC111	DECAL,DANGER,AUGER,5,6
8	1	1	1	DEC154	DECAL,SAC,LOGO,NEW,20.5H,24W
9	1	1	1	DEC286	DECAL,TURBOMAX,2.63,60,LH
10	1	1	1	DEC287	DECAL,TURBOMAX,2.63,108,RH
11	2	0	0	DEC290	DECAL,TURBOMAX,6046,WHITE
12	0	2	0	DEC291	DECAL,TURBOMAX,6056,WHITE
13	0	0	2	DEC292	DECAL,TURBOMAX,6070,WHITE

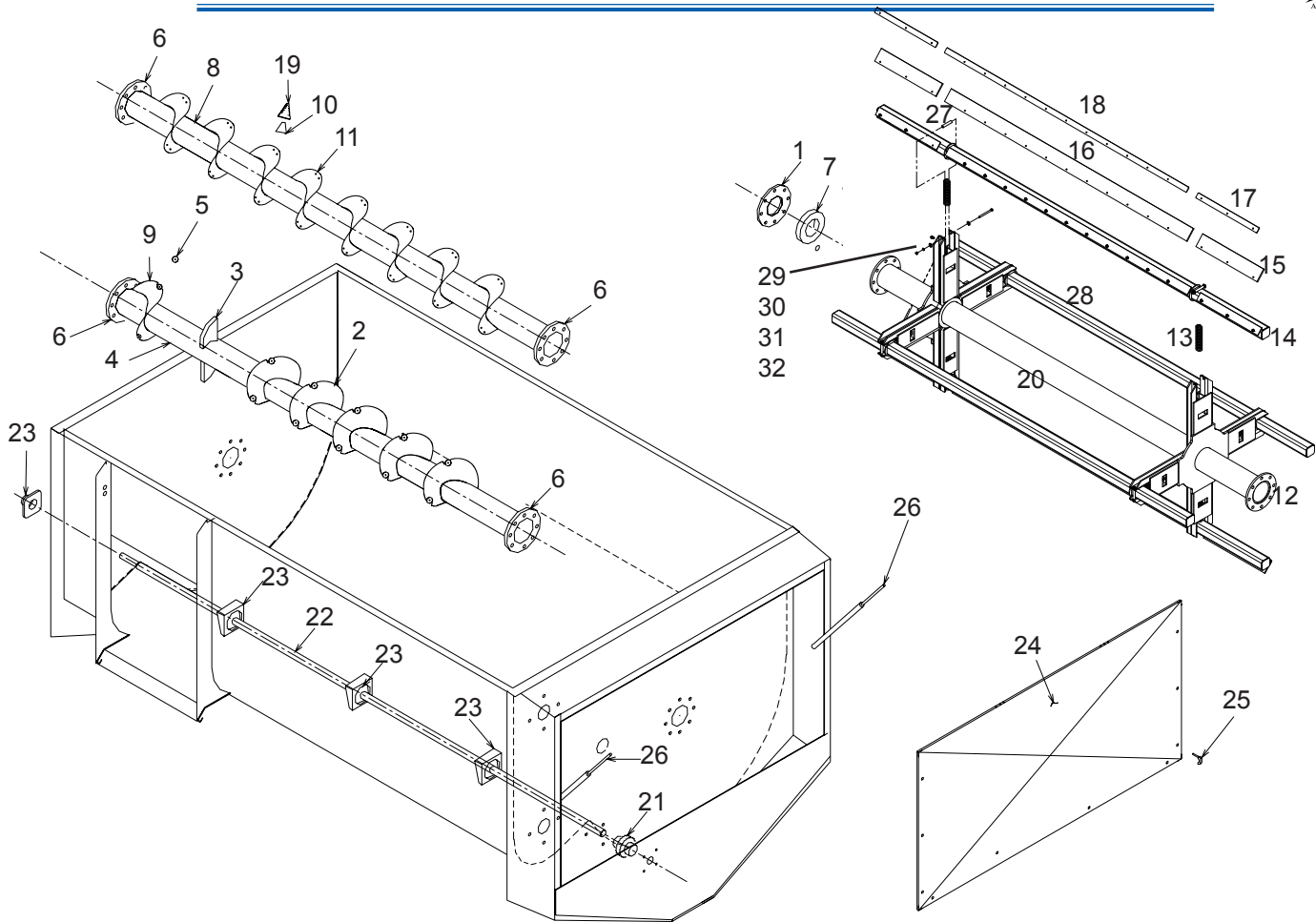
OILBATH ASSEMBLY



ITEM #	QTY.	PART #	DESCRIPTION
1	1	TM08009	SPROCKET (140B96)
2	1	MON300071	SPROCKET (140C16)
3	1	MON300072	SPROCKET (140B18)
4	1	TM08012	SPROCKET (140B30)
5	1	TM03052	SPROCKET (100B58)
6	1	MON300073	SPROCKET (100B21)
7	1	TM08014	SPROCKET (100B58)
8	1	MON300049 MON300050	SPROCKET (100B22 - 540RPM) SPROCKET (100B12 - 1000RPM)
9	2	MON300009	PILLOW BLOCK (1.75")
10	4	TM00202	PILLOW BLOCK (2.44")
11	1	MON300051	PLASTIC BEARING (5")
12	2	MON300047	PILLOW BLOCK (3.50")
13	1	MON300014	PLASTIC BEARING (3.44")
14	1	MON300052	DRIVE SHAFT
15	1	MON300053	JACKSHAFT
16	1	MON300054	REEL DRIVE SHAFT
17	1	MON300055	TOP AUGER DRIVE SHAFT
18	1	MON300056	BOTTOM AUGER DRIVE SHAFT

ITEM #	QTY.	PART #	DESCRIPTION
19	1	MON300015	REEL IDLER SHAFT
20	2	MON300057	AUGER IDLER SHAFT
21	1	MON300058	TAPER LOCK HUB (4Z2)
22	2	MON300059	TAPER LOCK HUB (Y1)
23	1	MON300048	TAPER LOCK HUB (Y2)
24	1	MON300027	CHAIN TIGHTNER TOP AUGER
25	1	MON300028	CHAIN TIGHTNER BOTTOM AUGER
26	4	MON300026	TIGHTNER BLOCK
27	2	TM03102	TIGHTNER CHAIN
28	2	TM03179	TURNBUCKLE TIGHTNER
29	2	MON300029	TIGHTNER SPRING

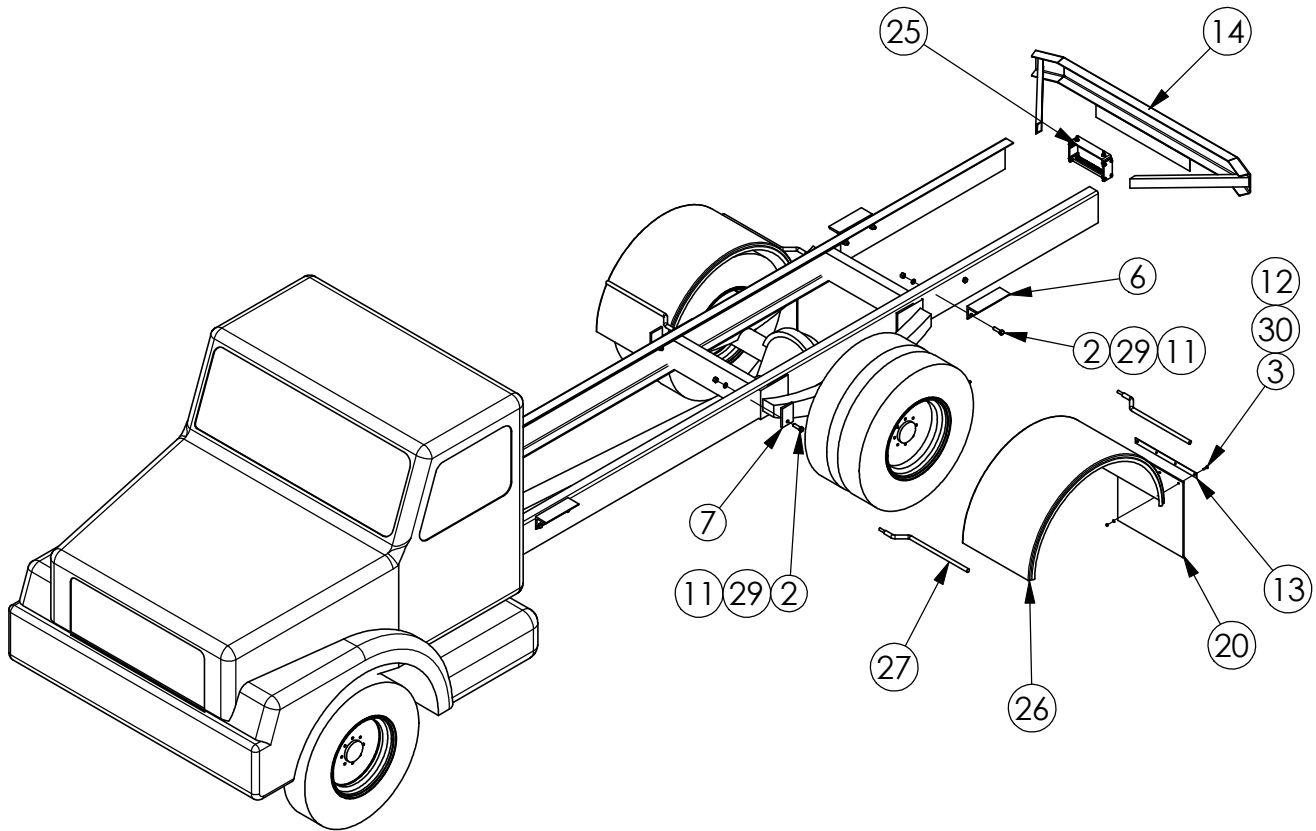
REEL & AUGER ASSEMBLY



ITEM #	QTY.	PART #	DESCRIPTION
1	2	MON300060	REEL BACK PLATE
2	7	SAC14689	FLIGHTING BOTTOM AUGER (RH)
3	4	MON102205	DISCHARGE PADDLE BOTTOM AUGER
4	1	MON700975	BOTTOM AUGER
5	23	MON300018	KNIFE BOTTOM AUGER (ROUND)
6	4	MON102200	BOTTOM AUGER FLANGE
7	2	MON300061	POLY RING
8	1	MON700974	TOP AUGER
9	1	SAC14688	FLIGHTING BOTTOM AUGER (LH)
10	83	MON300012	KNIFE TOP AUGER (SICKLE SECTION)
11	9	SAC14687	FLIGHTING TOP AUGER (RH)
12	2	TM03130	REEL FLANGE
13	6	MON300011	REEL ARM TENSION SPRING
14	3	MON300110	REEL ARM
15	4	MON102237	RUBBER WIPER BLADE 30"
16	2	MON102258	RUBBER WIPER BLADE 119"
17	4	MON102240	WIPER SUPPORT BAR 30"
18	2	MON102261	WIPER SUPPORT BAR 119"
19	83	MON300013	KNIFE BACK PLATE
20	1	MON700986	REEL

ITEM #	QTY.	PART #	DESCRIPTION
21	1	MON300063	CHAIN COUPLER
22	1	TM11009	DRIVELINE SHAFT
23	4	MON300009	PILLOW BLOCK BEARING
24	1	TM08038	OILBATH DOOR
25	10	MON300064	OILBATH DOOR LATCH
26	2	MON300079	DOOR GAS SHOCK
27	4	MON102246	PIPE 1/2X4-1/4
28	2	MON700981	TUBE, REEL, 6056
29	8	BLT12X6NC	BLT, HEX, 1/2, 6, NC, G5
30	16	WSH12FLAT	WSH, FLAT, 1/2
31	8	WSH12LOCK	WSH, LOCK, 1/2
32	8	NUT12NC	NUT, HEX, 1/2, NC, G5

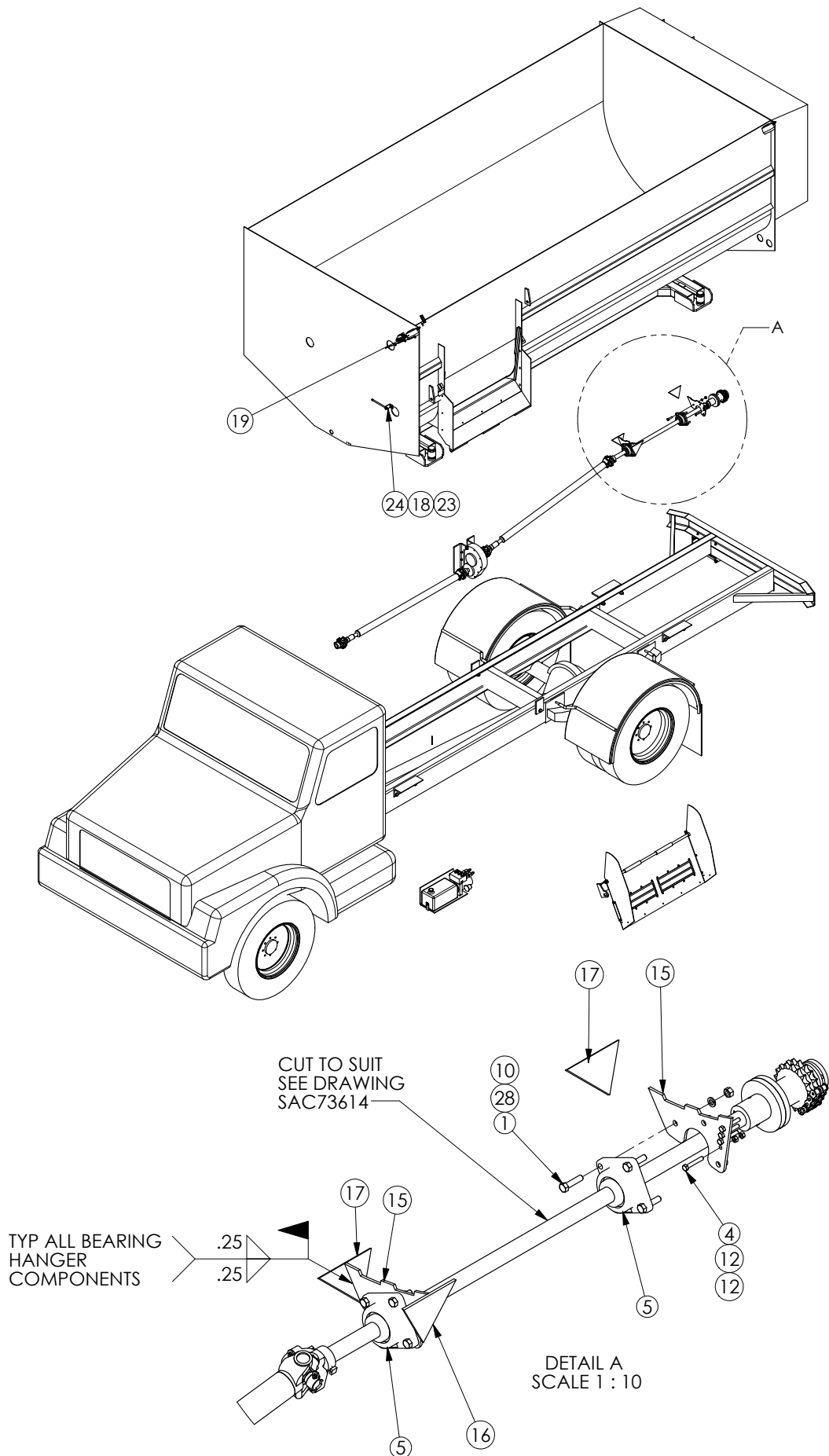
FINAL ASSEMBLY



SALES DRIVE PACKAGES				
	ITEM #	QTY	PART #	DESCRIPTION
BASE ASSY	31	1	MON900534	6056,TRK,BASE,ASSY
CHASSIS	32	1	*	TRK,138" CAB TO AXLE
DISCHARGE PACKAGE	33	1	SAC75010	TRAY,SLIDE,44.75,.88PN,ASSY
	34	1	SAC75098	TRAY,SLIDE,44.75,EXTNSN,ASSY
HYD PACKAGE	35	1	SAC75095	HYD,ASSY,REEL,SLIDE,TRK
	36	1	MON900619	DRIVE,KIT,HYDRO,REEL
DRIVE PACKAGE**	37	1	MON900620	HYDRO,6090,REEL,ASSY
	38	1	MON900679	DRIVE,KIT,RTANGLE,TM
	39	1	SAC75094	DRIVE,KIT,SLIDE,DIS,REEL
SWITCHBOX PACKAGE	40	1	SCA170075	SWTCHBOX,4,DOOR,ASSY,KN,TRK
	41	1	SCA170081	SWTCHBOX,JYSTK,3SWTCH,ASSY
SCALE PACKAGE	42	1	SAC75836	SCALE,KIT,DS,REMOTE,TRUCK
OPTIONAL ITEMS				
LINERS	43	1	MON900581	LN,TM,6035,REEL,END,SS
	44	1	MON900583	LN,TM,6056,REEL,AUG,SIDE,SS
FRONT BUMPER	45	1	SAC56058	BUMPER,ROLLER,UNIV,ASSY
	46	1	SAC56078	BUMPER,EXTNSN,UNIV,ASSY
TURBO PRECLEANER	47	1	SAC56084	PRECLEANER,TURBO,CABOVER,KIT
BOLT IN PANEL	48	1	MON900650	PNL,TM,6056,BOLTON,ASSY

BODY MOUNT PARTS (REQUIRED)				
ITEM	QTY	PART #	DESCRIPTION	
1	6	BLT12X2NC	BLT,HEX,1/2,2,NC,G5	
2	10	BLT34X212NC	BLT,HEX,3/4,2-1/2,NC,G5	
3	8	BLT516X114NC	BLT,HEX,5/16,1-1/4,NC,G5	
4	4	BLT516X2NC	BLT,HEX,5/16,2,NC,G5	
5	2	BRGRCJ1716	BRG,FLG,4BLT,1.438	
6	4	MON101899	MOUNT,FRAME,TRK,ANGLE,4AUG	
7	2	MON101900	MOUNT,FRAME,TRK,4-AUG	
8	1	MON600170	MANUAL,TURBOMAX,6056,TRK	
9	1	MON900561	KIT,DECALS,TRK,TRMX	
10	6	NUT12NC	NUT,HEX,1/2,NC,G5	
11	10	NUT34NC	NUT,HEX,3/4,NC,G5	
12	16	NUT516NC	NUT,HEX,5/16,NC,G5	
13	2	SAC56009	STRAP,FLAT,MUD	
14	1	SAC56032	BUMPER,REAR,KIT,TRUCK	
15	2	SAC73615	HANGER,BRG,MID,REEL,TRK	
16	1	SAC73616	GUSSET,HANGER,BRG,LH,REEL,TRK	
17	2	SAC73617	GUSSET,HANGER,BRG,RH,REEL,TRK	
18	1	SAC73619	BRKT,GRS,LINE,FR,REEL	
19	1	SAC75838	LIGHT,KIT,KNIGHT,TRUCK	
20	1	SACFLAP24X36	FLAP,MUD,.38,24,36	
21	50	SPCABLETIEHVY	TIE,CABLE,HVY,#175	
22	100	SPCABLETIEMED	TIE,CABLE,MED,#30-50	
23	1	SPGH48	HOSE,GRS,48,1/8	
24	1	SPGZRK618	ZRK,GREASE,1/8,FEM,PIPE,STR	
25	1	STI590783	STEP,BLT-ON,RUBBER,KIT	
26	2	TWHL43A	FENDER,TRK,POLY,SINGLE,AXLE,PR	
27	2	TWKIT#3	HARDWARE,MOUNTING,FENDER,SNGL	
28	6	WSH12LOCK	WSH,LOCK,1/2	
29	10	WSH34LOCK	WSH,LOCK,3/4	
30	8	WSH516LOCK	WSH,LOCK,5/16	

FINAL ASSEMBLY





OPTIONS

ELECTRONIC SCALES

- Allows accurate ration weight while loading.
- Refer to the manufactures operator manual for your specific scale option operation and maintenance.

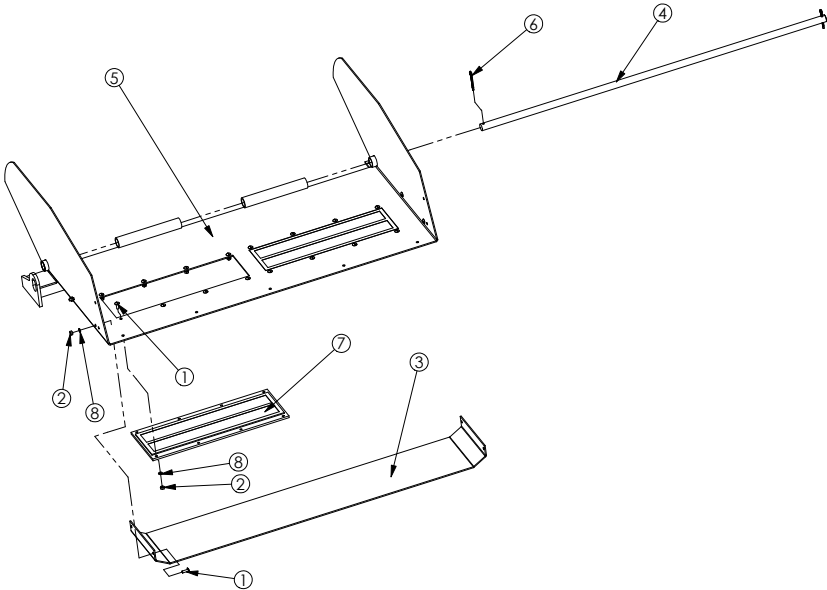
WHEELS AND TIRES

- Wheels and tires should be sized to support the gross weight of the loaded mixer.

DISCHARGE BREAKDOWN

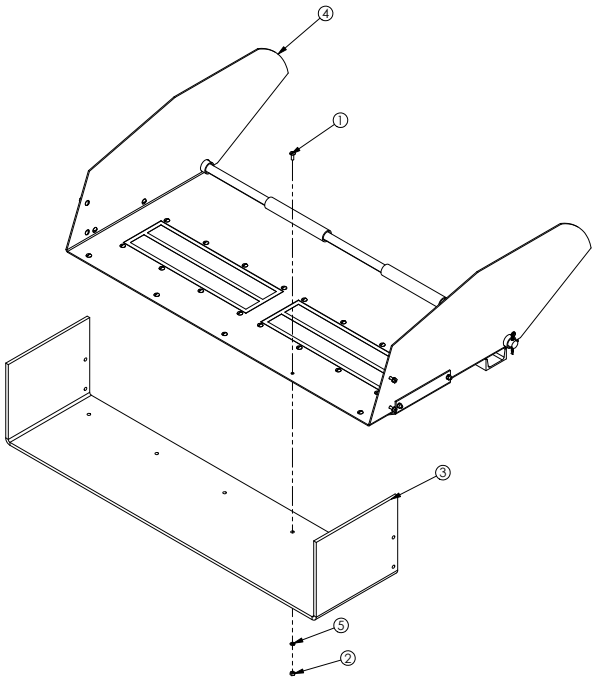


21" SLIDE TRAY (SAC75010)



ITEM #	QTY	PART #	DESCRIPTION
1	20	BLT14X34ONC	BLT,TRUSS,SLOT,1/4,3/4,NC,G2
2	20	NUT14NC	NUT,HEX,1/4,NC,G5
3	1	SAC73100	GUARD,MAGNET,DIS,TRAY,SLIDE
4	1	SAC73101	ROD,HINGE,.88,46,75
5	1	SAC74026	TRAY,SLIDE,44,75,.88PN,WLD
6	2	SPCP316X2	PIN,COTTER,3/16,2
7	2	SPMAGNET1850	MAGNET,7,25,18,5,PLATE
8	20	WSH14LOCK	WSH,LOCK,1/4

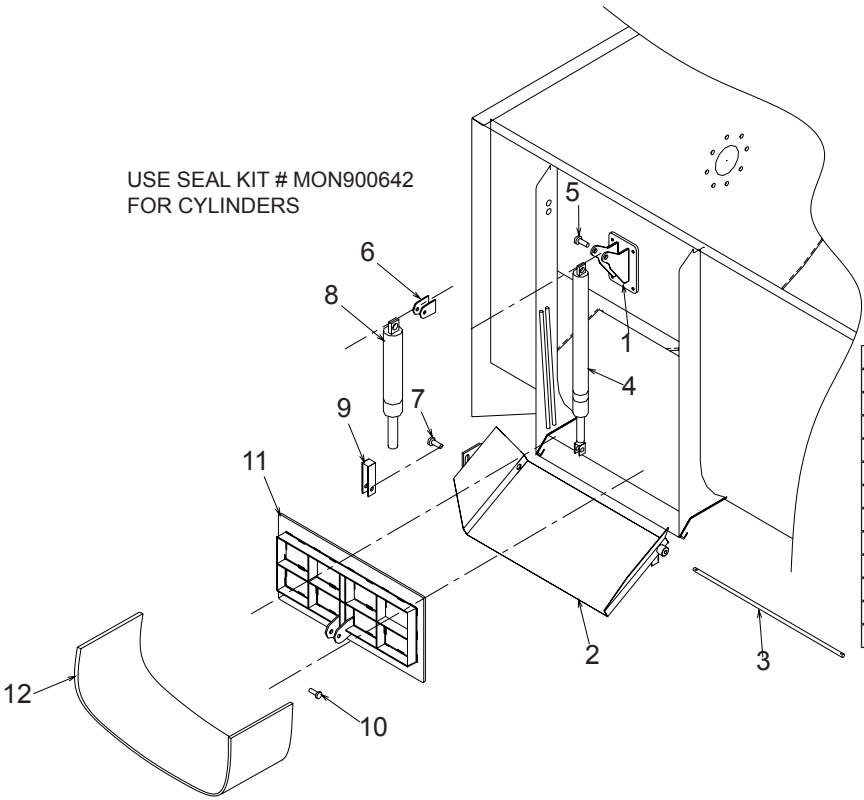
21" SLIDE TRAY W/8" EXTENSION (SAC75098)



ITEM #	QTY.	PART #	DESCRIPTION
1	9	BLT14X34ONC	BLT,TRUSS,SLOT,1/4,3/4,NC,G2
2	9	NUT14NC	NUT,HEX,1/4,NC,G5
3	1	SAC73122	BELT,EXTNSN,.25,12,64,75
4	1	SAC75010	TRAY,SLIDE,44,75,.88PN,ASSY
5	9	WSH14LOCK	WSH,LOCK,1/4

SLIDE TRAY & HYDRAULIC ASSEMBLY (SERIAL #----)

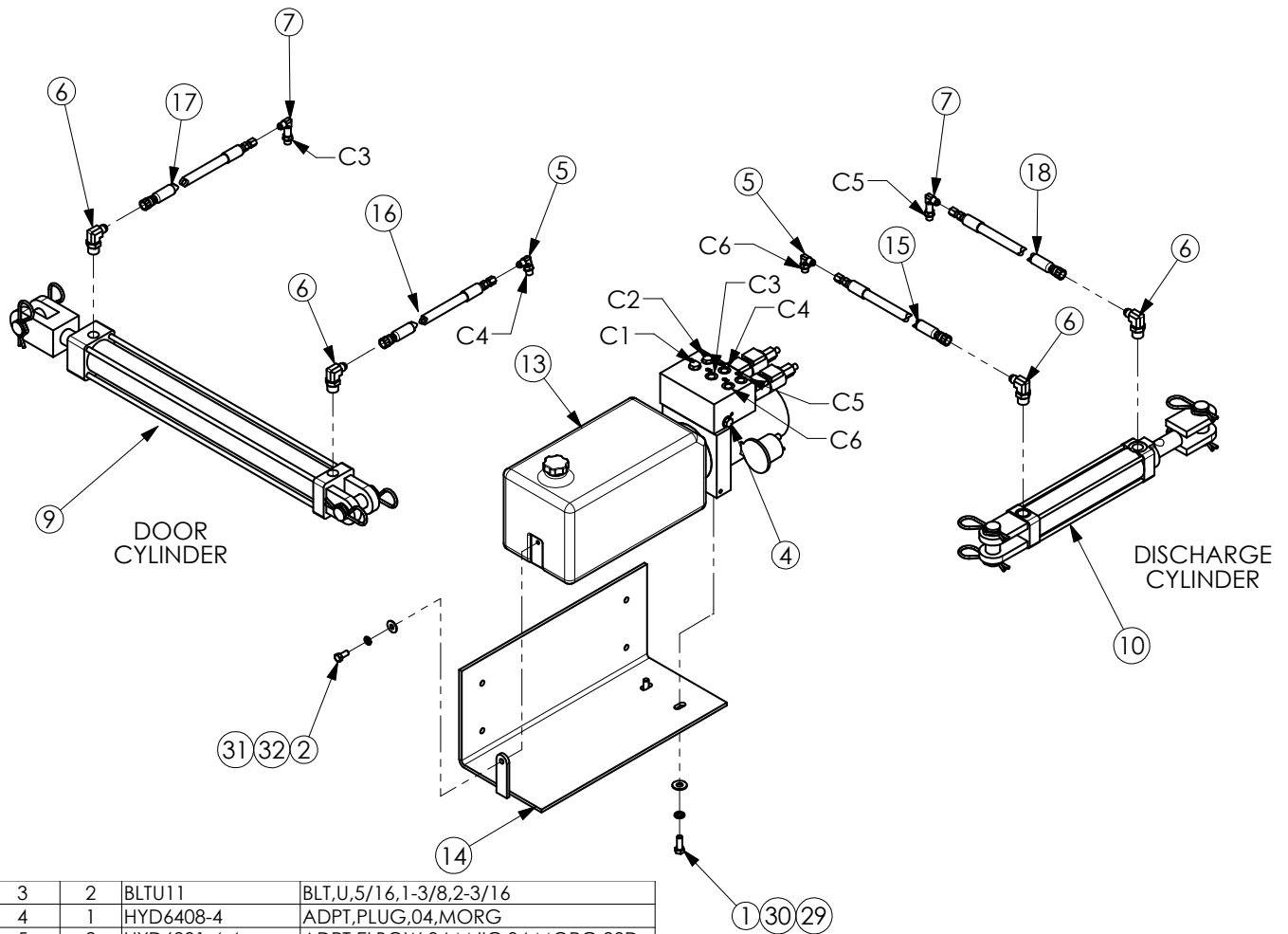
USE SEAL KIT # MON900642
FOR CYLINDERS



ITEM #	QTY.	PART #	DESCRIPTION
1	1	05048	DOOR CYLINDER MOUNT
2	1	08040	DISCHARGE SLIDE TRAY
3	1	08041	PIVOT ROD
4	1	03041	DOOR CYLINDER
5	2	05051	CYLINDER PIN
6	2	05049	DISCHARGE CYLINDER MOUNT
7	1	05053	DISCHARGE CYLINDER PIN
8	1	03040	DISCHARGE CYLINDER
9	1	05045	DISCHARGE TRAY LINKAGE
10	1	05051	DOOR CYLINDER PIN
11	1	08043	DISCHARGE DOOR
12	1	08044	SLIDE TRAY EXTENSION

HYDRAULIC BREAKDOWN

ELECTRIC SELECTOR ASSEMBLY FOR SLIDE TRAY (MON900545)



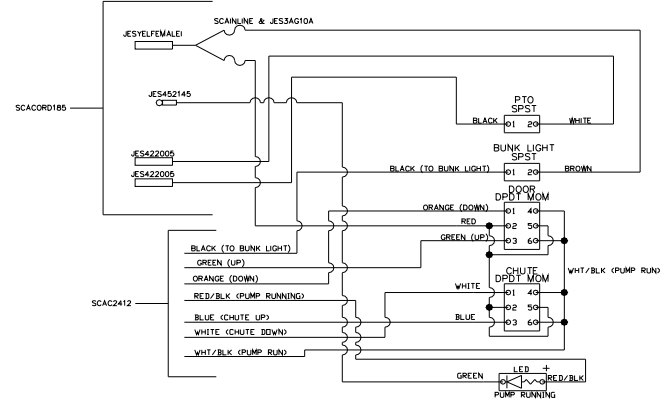
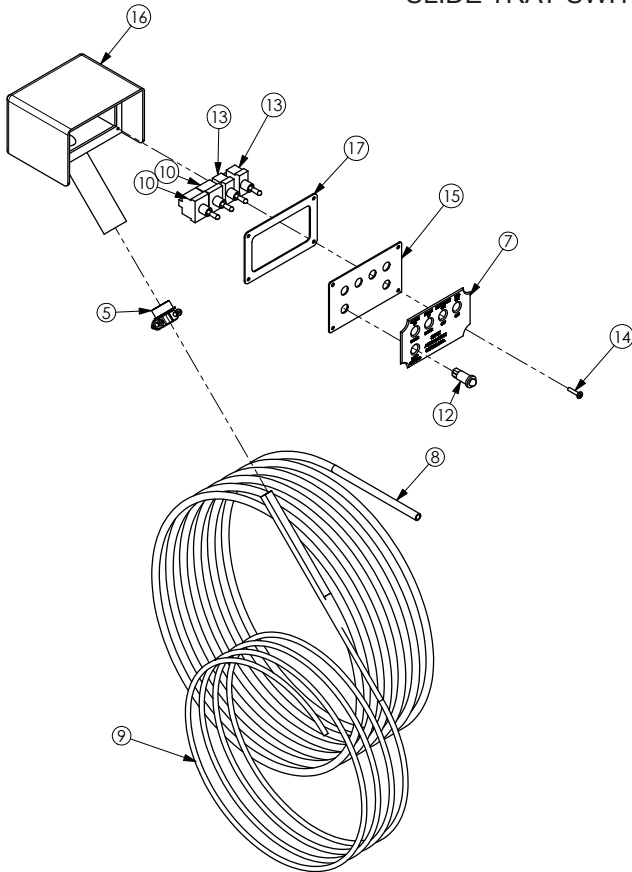
3	2	BLTU11	BLT,U,5/16,1-3/8,2-3/16
4	1	HYD6408-4	ADPT,PLUG,04,MORG
5	2	HYD6801-4-4	ADPT,ELBOW,04,MJIC,04,MORG,90D
6	4	HYD6801-6-8	ADPT,ELBOW,06,MJIC,08,MORG,90D
7	2	HYD6801LL-4-4	ADPT,ELBOW,LL,04,MJIC,04,MORG
8	4	JES73B	NUT,WIRE,ORANGE
9	1	LM310284	CYL,HYD,2,20,TIEROD,2500PSI,PNT
10	1	MON102078	CYL,HYD,2,8,TIEROD,ORING
11	*	MON600151	SWTCHBOX,DIS,OPTIONS
12	20	OILDEXTRON	OIL,DEXTRON,GLIDOMATIC
13	1	SAC73612	POWER,UNIT,HYD,12VDC,2VLV
14	1	SAC74188	MOUNT,POWER,UNIT,WLD
15	1	SAC74189	HOSE,HYD,1/4,126,04FJ,06FJ
16	1	SAC74190	HOSE,HYD,1/4,174,04FJ,06FJ
17	1	SAC74191	HOSE,HYD,1/4,198,04FJ,06FJ
18	1	SAC74206	HOSE,HYD,1/4,121,04FJ,06FJ
19	1	SCA170067	BRKT,INDCTR,EXT,ARM
20	1	SCA170070	BRKT,SWTCHBX,12
21	4	SP10X34TS	SCREW,HEX,#10,34,DRLLNG
22	4	SP14X1TS	SCREW,HEX,1/4,1,DRLLNG
23	100	SPCABLETIEMED	TIE,CABLE,MED,#30-50
24	3	STI700290	CONN,CORD,FLEX,3/8,ROMEX
25	144	STI700418	CABLE,BATTERY,1GA,BLK
26	4	STI700423	LUG,COPPER,1GA,13/32"STUD
27	1	STI701246	FUSE,SLOWBLOW,HIGHAMP,300AMP
28	1	STI701247	BLOCK,FUSE,HIGHAMP,80-300AMP
29	2	WSH38FLAT	WSH,FLAT,3/8
30	2	WSH38LOCK	WSH,LOCK,3/8
31	1	WSH516FLAT	WSH,FLAT,5/16
32	1	WSH516LOCK	WSH,LOCK,5/16

SEAL KIT FOR CYLINDERS
IS HYDPMCK9000

SWITCHBOXES

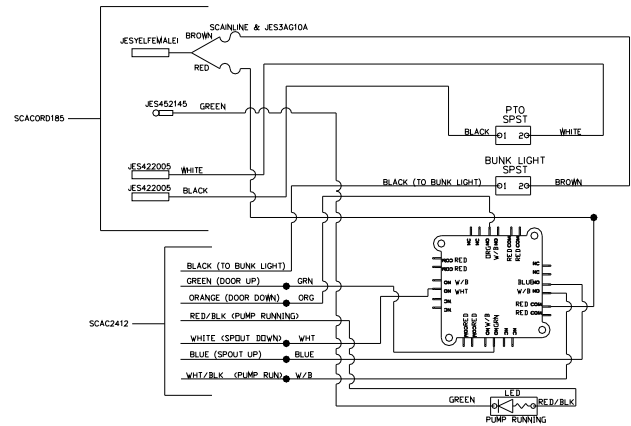
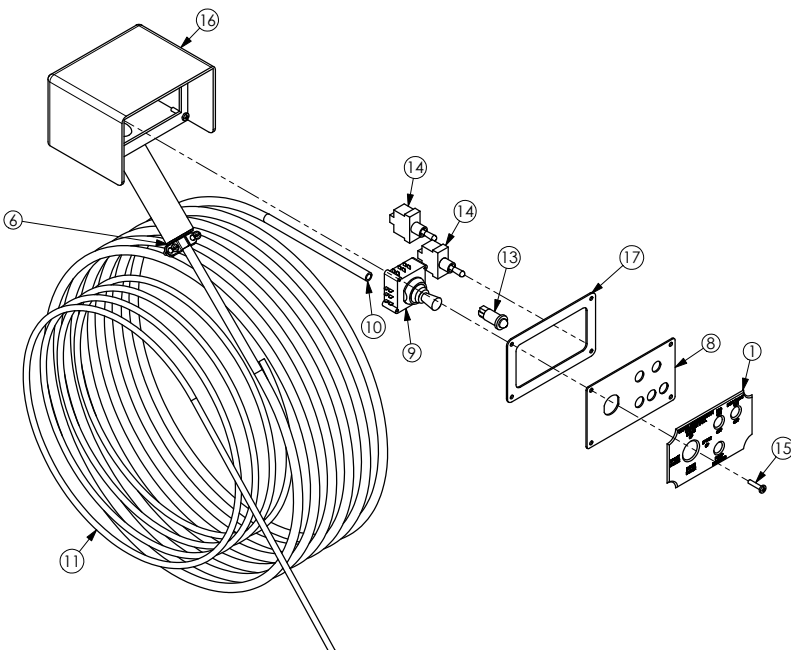


SLIDE TRAY SWITCH ASSEMBLY (SCA170075)



ITEM #	QTY.	PART #	DESCRIPTION
1	2	JES3AG10A	FUSE,10AMP,GLASS,.25,1.25 (NOT SHOWN)
2	4	JES422005	CONN,BUTT,BLUE,16-14
3	1	JES452145	TRMNL,RING,BLUE,.25
4	1	JES461065	TRMNL,FORK,RED
5	1	JES6624	CONN,CORD,FLEX,3/4,ROMEX
6	1	JESYELFEMALEI	TRMNL,SPADE,FEM,INSUL,YELLOW
7	1	SACP10211	DECAL,FACE,CNTRL,TRK,MIXER
8	240	SCAC2412	CORD,BULK,18,12COND
9	96	SCACORD185	CORD,BULK,18,5
10	2	SCADPDTMOM	SWITCH,TOGGLE,DPDT,SC
11	1	SCA170075	SLIDE TRAY SWITCH ASSEMBLY
12	1	SCAL50171	LED,LAMP,12VDC
13	2	SCASPTSC	SWITCH,TOGGLE,SPST,ON/OFF
14	4	SPMB832X34SSP	SCREW,MACH,8-32,3/4,SS
15	1	STI100156	COVER,BOX,CNTRL,ELEC
16	1	STI200109	BOX,CNTRL,ELEC
17	1	STI610809	GASKET,REMOTE,3,19,5,19
18	18	STIWIRE12PR02	WIRE,PRIMARY,12GA,RED

SLIDE TRAY JOYSTICK ASSEMBLY (SAC170081)

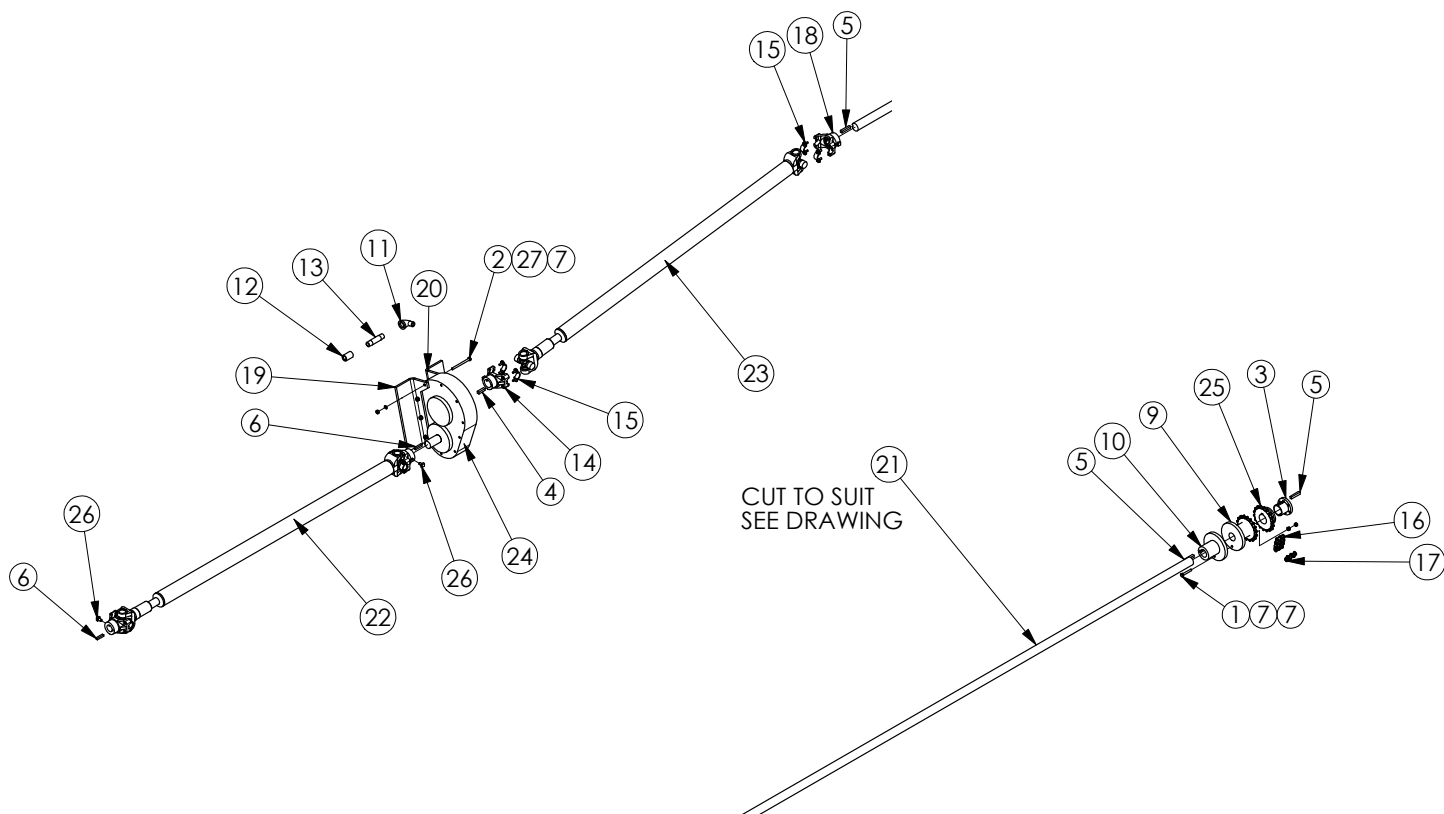


NOTE: BOTTOM VIEW OF SWITCHES

ITEM	QTY.	PART #	DESCRIPTION
1	1	DEC279	DECAL,FACE,CNTRL,JYSTK,KN
2	2	JES3AG10A	FUSE,10AMP,GLASS,.25,1.25 (NOT SHOWN)
3	2	JES422005	CONN,BUTT,BLUE,16-14
4	1	JES452145	TRMNL,RING,BLUE,.25
5	4	JES461065	TRMNL,FORK,RED
6	1	JES6624	CONN,CORD,FLEX,3/4,ROMEX
7	1	JESYELFEMALEI	TRMNL,SPADE,FEM,INSUL,YELLOW
8	1	SCA170078	COVER,BOX,CNTRL,JYSTK
9	1	SCA170089	SWITCH,JYSTK,DPDT,LOWPRO,WLD
10	240	SCAC2412	CORD,BULK,18,12COND
11	82	SCACORD185	CORD,BULK,18,5
12	2	SCA170075	SLIDE TRAY SWITCH ASSEMBLY
13	1	SCAL50171	LED,LAMP,12VDC
14	2	SCASPTSC	SWITCH,TOGGLE,SPST,ON/OFF
15	4	SPMB832X34SSP	SCREW,MACH,8-32,3/4,SS
16	1	STI200109	BOX,CNTRL,ELEC
17	1	STI610809	GASKET,REMOTE,3,19,5,19
18	18	STIWIRE14PR02	WIRE,PRIMARY,14GA,RED

DRIVE ASSEMBLY

DRIVE BREAKDOWN (SAC75094)

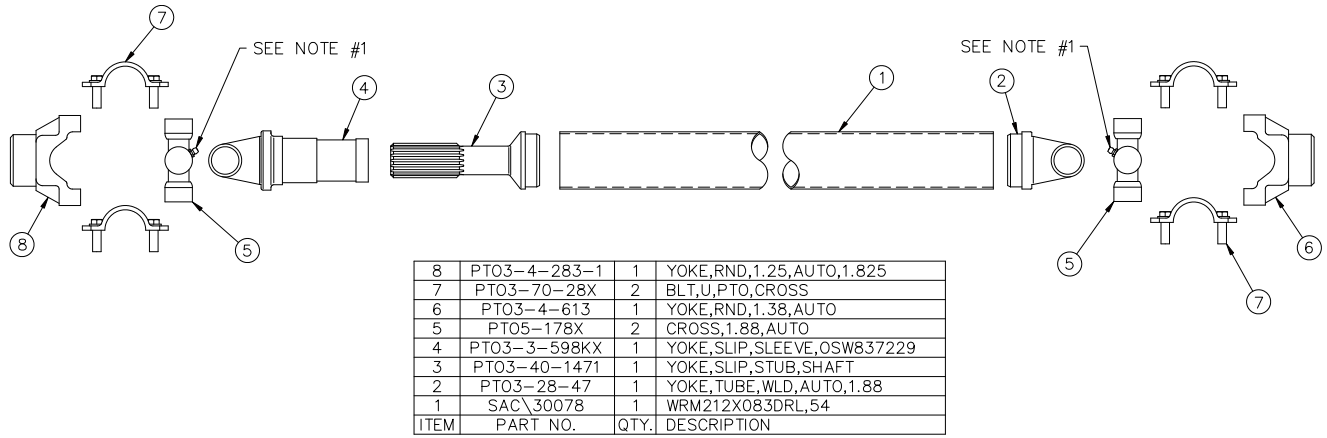


ITEM #	QTY	PART #	DESCRIPTION
1	1	BLT516X2NC	BLT,HEX,5/16,2,NC,G5
2	4	BLT516X4NC	BLT,HEX,5/16,4,NC,G5
3	1	HUBP1134	HUB,P1,1.75
4	1	KEY38X112	KEY,STOCK,.38,.38,1.5
5	3	KEY38X2	KEY,STOCK,.38,.38,2
6	2	KEY516X112	KEY,STOCK,.31,.31,1.5
7	6	NUT516NC	NUT,HEX,5/16,NC,G5
8	8	OIL80W90	OIL,80W90
9	1	OSW824087	HUB,SHEAR,5/16,ASSY
10	1	OSW840224	BLOCK,SHEAR,1.438
11	1	PFBL1290STEL	ELBOW,1/2,90DEG,STREET,BLK
12	1	PFBL12COU	COUP,1/2,BLK
13	1	PFBL12X312NIP	NIPPLE,1/2,3-1/2,BLK
14	1	PTO3-4-333	YOKE,RND,1.5,AUTO,1.825
15	2	PTO3-70-28X	BLT,U,PTO,CROSS
16	13	RC602	CHAIN,ROLLER,60-2
17	1	RC602CON	CHAIN,ROLLER,60-2
18	1	SAC35263	YOKE,DRVLN,1.44,839180
19	1	SAC60546	MOUNT,GEARBOX,TRK,ANGLE,FR
20	1	SAC60547	MOUNT,GEARBOX,TRK,ANGLE,RR
21	1	SAC73614	SHAFT,INPUT,1.44,XX
22	1	SAC75756	DRVLN,PTO,HANGER,KN
23	1	SAC75757	DRVLN,HANGER,GEARBOX,KN
24	1	SP2:1GEARBOXLF	GEARBOX,2:1,200,DI,LESS,FLANGE
25	1	SPK60P18H	SPK,60,P,18,1.75
26	6	SPSQHNC38X58H	SCREW,SQ,1/2,2,NL
27	4	WSH516LOCK	WSH,LOCK,5/16

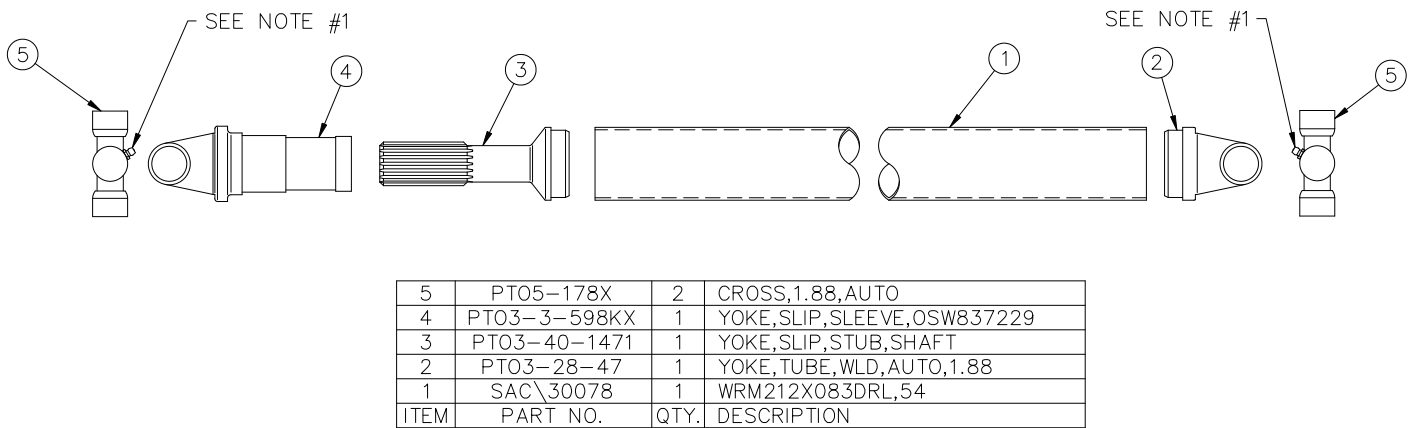
DRIVE ASSEMBLY



PTO DRIVELINE (SAC75756)



PTO DRIVELINE (SAC75757)





General Specifications 6056

Width: Mixing Chamber	91" (231 cm)
Overall	101" (257 cm)
Length: Mixing Chamber	192" (487 cm)
Overall	218" (554 cm)
Height: (On 38" Frame)	120" (305 cm)
Capacity	565 cu/ft (16 cu/m)
(Struck Level)	454 bushels
Unit Weight	16,931 lbs. (7680 Kg)
Bottom Section	3/8 Steel Plate
Upper Sides	3/16 Steel Plate
Front/Rear Panels	1/4 Steel Plate
Reel Diameter	63" (160 cm)
Discharge (Left Side of Mixer)	40" Discharge
Slide Tray	Standard Length
Drive	Chain & Sprocket
Minimum Horsepower Requirement	110 hp (82 Kw)

WARRANTY

TURBO-MAX warrants to the initial purchaser of a new TURBO-MAX product from an authorized TURBOMAX dealer that the product and the components thereof manufactured by TURBO-MAX are free from defects in material and workmanship at the time of shipment. TURBO-MAX further warrants to such purchaser that each new TURBO-MAX product will perform without structural or operational failure if the product is assembled and mounted in accordance with TURBOMAX 's instruction and drawing and is then operated and maintained as described in the Owner's Manual.

WARRANTY PERIOD

The above warranty shall be effective for a period of one year on workmanship and materials from the date of delivery by the TURBO-MAX dealer to the initial purchaser.

PURCHASER'S REMEDIES

If a warranted TURBO-MAX product or component fails to conform to the above warranty during the one year warranty period, TURBO-MAX will furnish the parts, and labor at the factory necessary to correct such failure, provided TURBO-MAX is notified through the selling representative within 30 days of the discovery of the failure. All warranty submissions must include the original part in question, along with a properly filled out warranty claim sheet, before a warranty award will be made. Labor at the factory is specified as labor done at the TURBO-MAX factory ONLY! TURBO-MAX will pay the common carrier freight expense of parts to and from the owner. Faster freight service is available, with the owner paying the difference in cost between common carrier and preferred method by owner. Freight of whole goods to or from the factory is the owner's expense, regardless if they fall under warranty or not. All warranty decisions will be final!

EXCLUSIONS

This warranty shall not apply to component parts or accessories of products not manufactured by TURBO-MAX and which carry the warranty of the manufacturer thereof. Items of high wear and regular maintenance shall not be covered under this warranty. This warranty shall be void if any part or parts not manufactured by TURBO-MAX are used either in maintaining or servicing of the products covered by this warranty. No warranty whatsoever is made on used, secondhand, altered, or rebuilt machinery.

THIS WARRANTY IS EXTENDED TO THE INITIAL PURCHASER FROM AN AUTHORIZED TURBOMAX DEALER AND MAY NOT BE ASSIGNED. THIS WARRANTY IS EXPRESSLY IN LIEU OF ANY OTHER WARRANTIES EXPRESSED OR IMPLIED, INCLUDING ANY IMPLIED WARRANTIES OF MERCHANTABILITY OR FOR A PARTICULAR PURPOSE AND TURBOMAX NEITHER ASSUMES NOR AUTHORIZES ANY OTHER PERSON TO ASSUME FOR IT ANY OTHER LIABILITY. THERE ARE NO WARRANTIES WHICH EXTEND BEYOND THE DESCRIPTION ON THE FACE THEREOF.

We reserve the right to make improvements to any of our products without notice of obligation regarding models previously sold.

Effective 1/1/07



SIOUX AUTOMATION CENTER INC.
877 1ST AVE. NW SIOUX CENTER, IA 51250
PH: (712) 722-1488
FAX: (712) 722-1487
TOLL FREE: 1-866-722-1488

<http://www.sioxautomation.com>