

USB2.0 to Fast Ethernet Adapter

EU-4207

User's Manual

Version 1.0 / January, 2009





Copyright© by Edimax Technology Co, LTD. all rights reserved. No part of this publication may be reproduced, transmitted, transcribed, stored in a retrieval system, or translated into any language or computer language, in any form or by any means, electronic, mechanical, magnetic, optical, chemical, manual or otherwise, without the prior written permission of this company.

This company makes no representations or warranties, either expressed or implied, with respect to the contents hereof and specifically disclaims any warranties, merchantability or fitness for any particular purpose. Any software described in this manual is sold or licensed "as is". Should the programs prove defective following their purchase, the buyer (and not this company, its distributor, or its dealer) assumes the entire cost of all necessary servicing, repair, and any incidental or consequential damages resulting from any defect in the software. Further, this company reserves the right to revise this publication and to make changes from time to time in the contents hereof without obligation to notify any person of such revision or changes.

The product you have purchased and the setup screen may appear slightly different from those shown in this QIG. For more detailed information about this product, please refer to the User's Manual on the CD-ROM. The software and specifications are subject to change without notice. Please visit our web site www.edimax.com for the update. All right reserved including all brand and product names mentioned in this manual are trademarks and/or registered trademarks of their respective holders.

Table of Contents

1. Introduction	1
Features.....	1
Package Contents.....	1
System Requirements.....	2
LED Status	2
2. Driver Installation	3
On Windows 2000/XP/Server 2003/Vista	3
Verifying the Driver Installation on Windows.....	5
On MAC OS X 10.x.....	6
Verifying the Driver Installation on Mac	9
3. Specifications.....	10
4. Federal Communication Commission	11
5. CE Mark Warning	11

1. Introduction

The USB 2.0 Ethernet Adapter allows your computer instantly connect to a 10/100Mbps network through simply a USB port; no hassle to open up your computer case as is required for an internal card now! It's also an ideal USB-to-LAN alternative for gaming console that needs network access in an environment lacking wireless capability. Compared with USB 1.1 standard which offers 12 Mbps speed, the adapter's compliance with USB 2.0 (480Mbps) ensures true 10/100 Mbps network speed without any compromise. Furthermore, the adapter is in compact size and is USB bus-powered; it requires no external power adapter, so that you can use it without crowding your workspace at all.

Features

- Complies with IEEE 802.3/802.3u standards
- Complies with USB 2.0/1.1 specifications
- Supports 10/100Mbps auto-negotiation
- Supports bus-powered design and no external power adapter required
- Supports Window 2000/XP/Server 2003/Vista and MAC OS 10.4.x and above

Package Contents

Before installation, please check the items of the package. The package should contain the following items:

- USB2.0 to Fast Ethernet Adapter x1
- Quick Installation Guide x1
- CD (Driver & Multi-language Quick Installation Guide & User Manual) x1

System Requirements

- CPU : Pentium III 1G above or similar
- Memory size : 256MB RAM
- One CD-ROM drive
- Hard Disk : At least 100MB available space
- One available USB port
- OS: Window 2000/XP/Server 2003/Vista or MAC OS 10.4.x and above

LED Status

LED	Color	Description
Power	Green	On for connection to a 100Mbps network. Off for connection to a 10Mbps or not connected.
Link	Green	LAN activity. Blinking when there is data flow between LAN and the host computer.

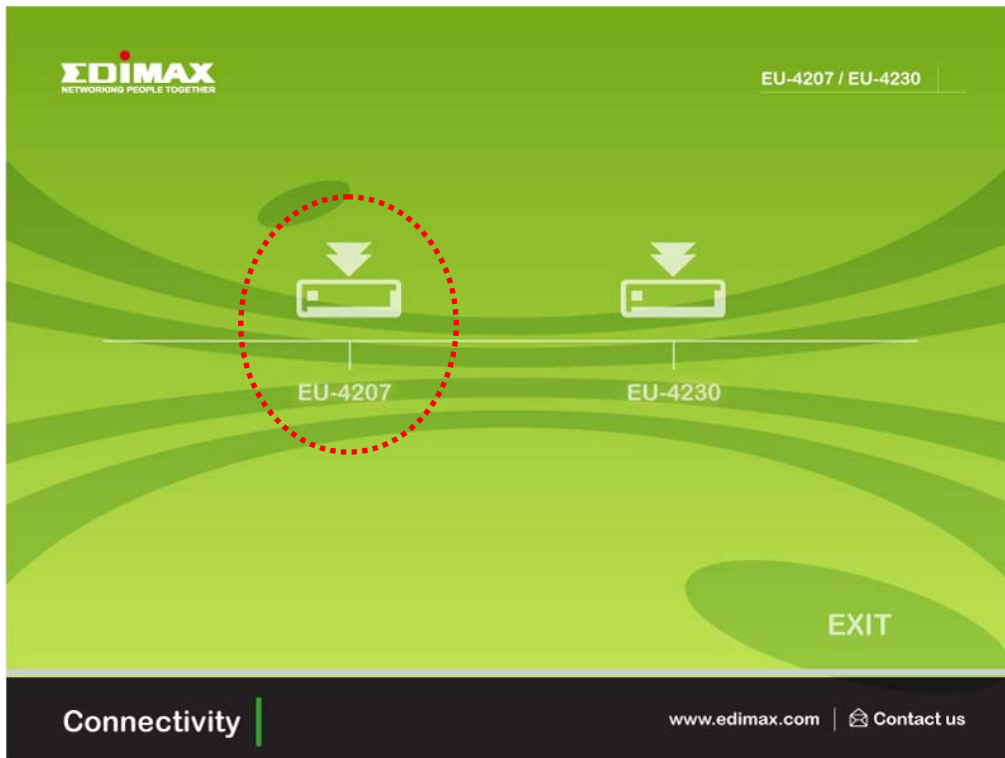
2. Driver Installation

On Windows 2000/XP/Server 2003/Vista

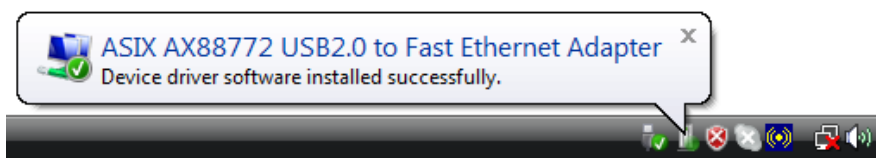
1. With your computer switched on, insert the “USB2.0 to Fast Ethernet Adapter” into an available USB2.0 port of your computer. The following message will appear on your screen, Please click ‘Cancel’ and use the wizard to install driver.



2. Please insert the installation CD into your CDROM drive. The Autorun setup programs should run under Windows 2000/XP/Server 2003/Vista, or you can click on the “Browse CD” to find other OS drivers in the CD.



3. Connect the Ethernet adapter’s USB end to a free USB port of your computer. Then a pop-up message will appear in the notification area indicating the installation is complete.



* Actual strings depend on your operation system. These screen shots are from Windows Vista and might vary slightly for each operation system. Now the installation is complete. You can connect the adapter to a network device by an Ethernet cable:

1. Connect an Ethernet cable to the Ethernet port on the adapter.
2. Connect the other end of the Ethernet cable to your network hub, switch or router.

The Link LED should light up green to indicate a proper physical connection between the adapter and the network. If the Link LED doesn’t light up, please verify the cable connections between all the network devices.

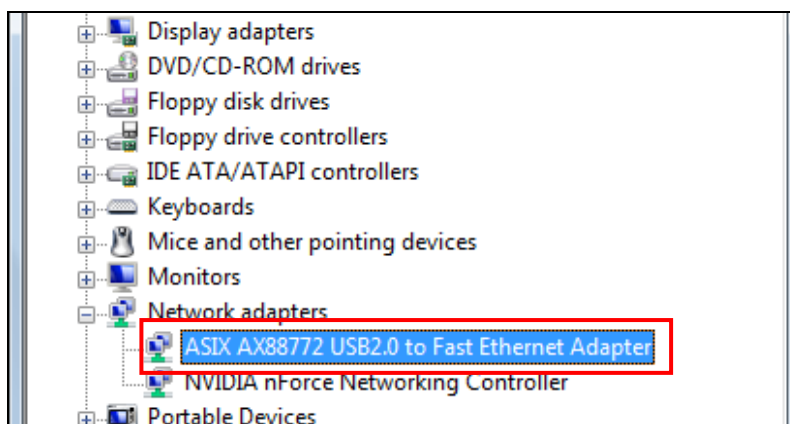
Verifying the Driver Installation on Windows

Once you finish the installation, you can open Windows **Device Manager** to verify if your Ethernet adapter is properly installed. To access the **Device Manager**:

- On Windows Vista: Right-click **Computer** on the desktop and click **Properties > Device Manager**.
- On Windows XP/2000: Right-click **My Computer** on the desktop and click **Properties > (Hardware) > Device Manager**.

In the **Network adapters** group, an item named **ASIX AX88772 USB2.0 to Fast Ethernet Adapter** should be displayed.

If there is a question or exclamation mark next to that item, then the driver is not properly installed. Please delete the item, select the **Delete the driver software for this device** option (if provided), unplug the adapter from your computer and then repeat the installation steps.

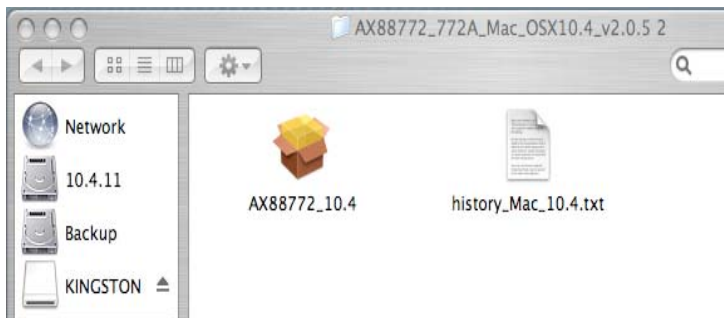


On MAC OS X 10.x

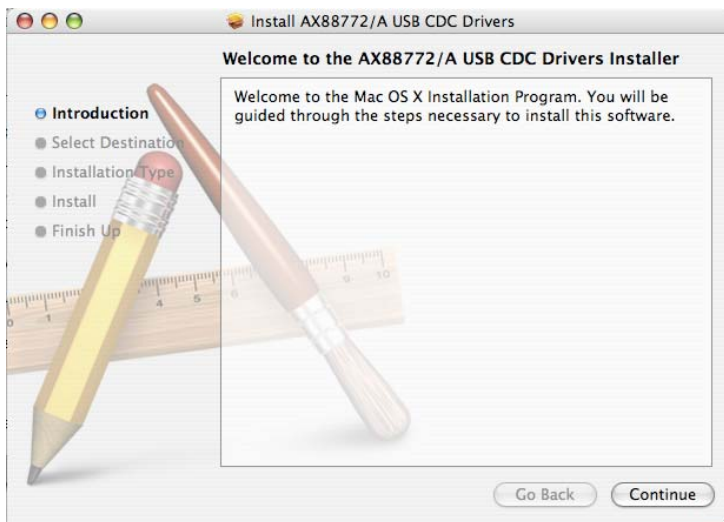
1. Insert the provided driver CD into your CD-ROM drive. Double-click the CD and navigate to the directory of **\Drivers\Mac**



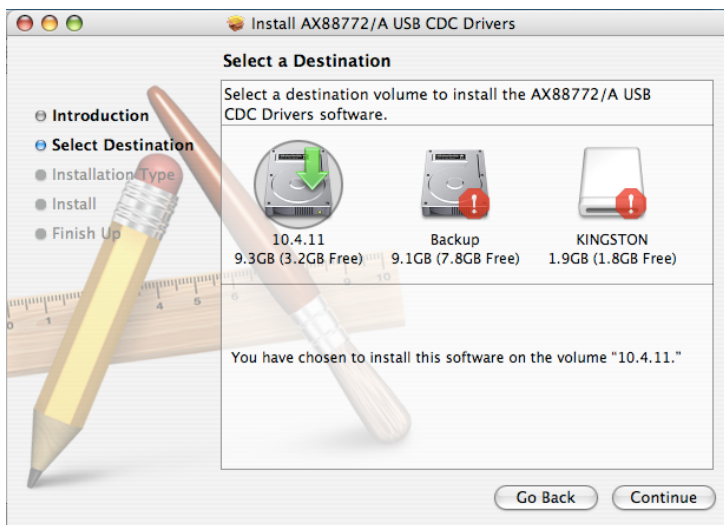
2. In the directory of Mac10.x, please double-click **AX88772_10.4** to execute the installer program.



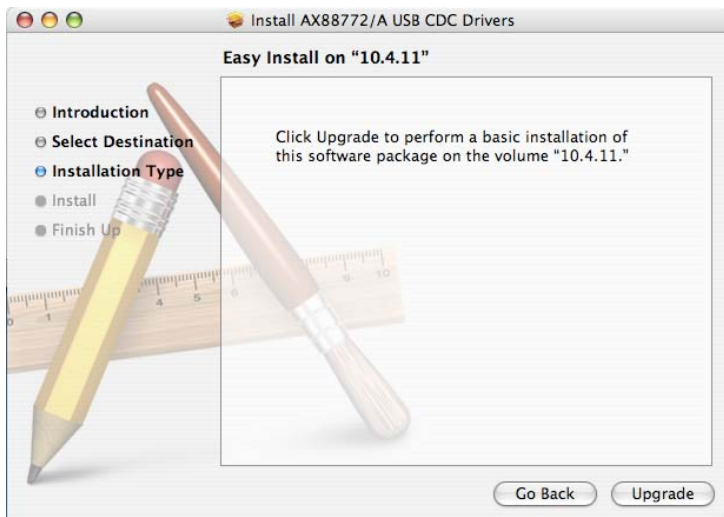
3. The onscreen prompted and please click on **Continue** to go to next step.



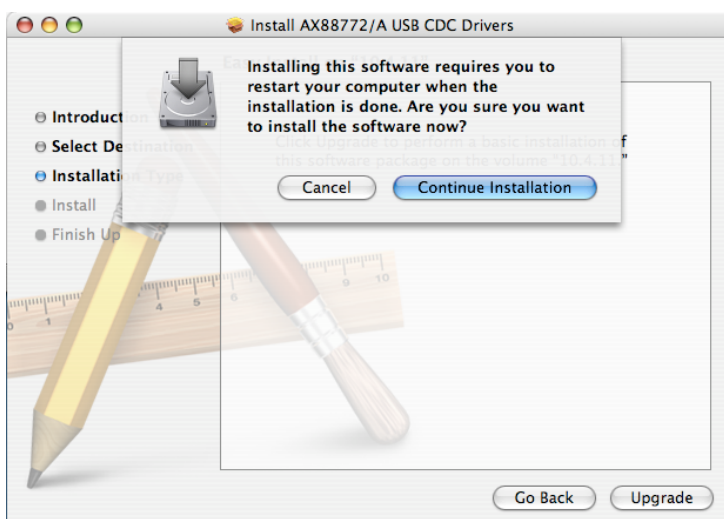
- Please select a destination volume to install driver software and click on **Continue**.



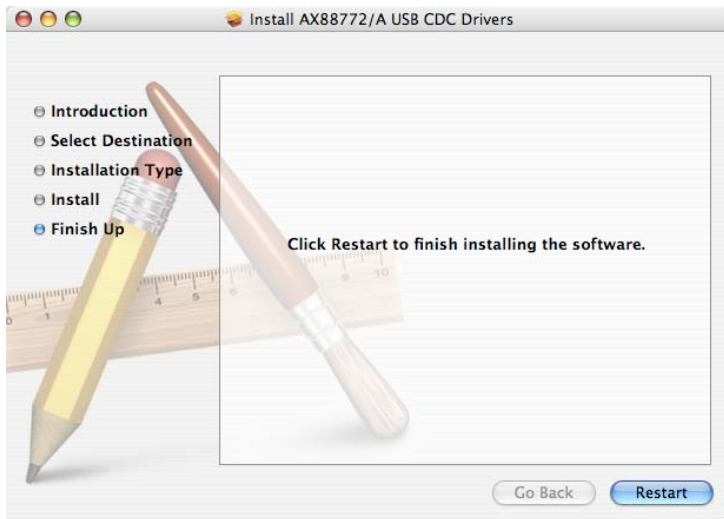
- Click on **Upgrade** or **Install** to continue this installation.



- Make sure that you want to install this driver now and the computer will be restarted once the installation is done. Please click on **Continue Installation** to continue this installation.



7. Click on **Restart** to take the new settings effect.



Now the installation is complete. You can connect the adapter to a network device by an Ethernet cable:

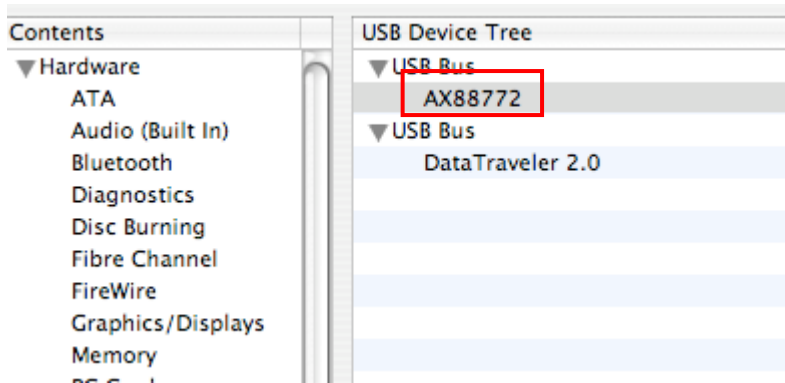
1. Connect an Ethernet cable to the Ethernet port on the adapter.
2. Connect the other end of the Ethernet cable to your network hub, switch or router.

The Link LED should light up green to indicate a proper physical connection between the adapter and the network. If the Link LED doesn't light up, please verify the cable connections between all the network devices.

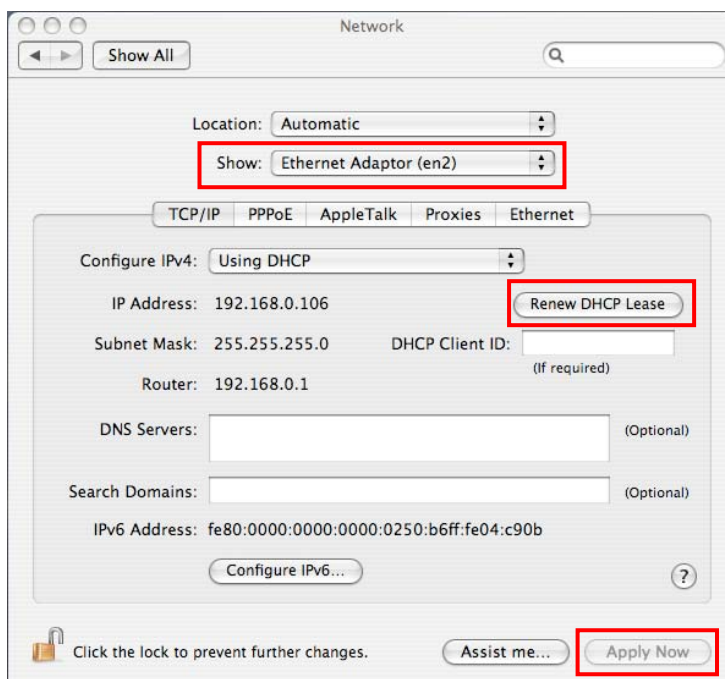
* Actual strings depend on your operation system. These screen shots are from Mac OS X v10.4 and might vary slightly for each operation system.

Verifying the Driver Installation on Mac

Once you finish the installation of Ethernet Adapter, please navigate to **System Profiler>Hardware>USB**, then you will find the driver of AX88772.



Also navigate to **System Preference>Network**, please click on **Renew DHCP Lease** and **Apply Now** as following to verify the installation of driver and Ethernet Adapter.



3. Specifications

Items	Descriptions
Network Standards	IEEE 802.3: 10Base-T IEEE 802.3u: 100Base-T
Data Transfer Rates	Ethernet: 10Mbps/20Mbps (Half/Full Duplex) Fast Ethernet: 100Mbps/200Mbps (Half/Full Duplex)
Data Bus	USB 2.0 (1.1 compliant)
LED Indicators	Power, Link
Power Consumption	850mW
Power Management	Suspend mode, hibernation mode
Network Interface	Female RJ45 jack
RAM	Embedded 20KB SRAM for RX packet buffering and 20KB SRAM for TX packet buffering
Operating System Support	Windows 2000, XP, Vista, Mac OS X 10.x
Dimensions	72 x 52x 26 mm (L x W x H)
Weight	58g
Operating Temperature	0°C to 70°C
Certifications	FCC, CE

* Specification is subject to change without further notice.

4. Federal Communication Commission Interference Statement

This equipment has been tested and found to comply with the limits for a Class B digital device, pursuant to Part 15 of FCC Rules. These limits are designed to provide reasonable protection against harmful interference in a residential installation. This equipment generates, uses, and can radiate radio frequency energy and, if not installed and used in accordance with the instructions, may cause harmful interference to radio communications. However, there is no guarantee that interference will not occur in a particular installation. If this equipment does cause harmful interference to radio or television reception, which can be determined by turning the equipment off and on, the user is encouraged to try to correct the interference by one or more of the following measures:

1. Reorient or relocate the receiving antenna.
2. Increase the separation between the equipment and receiver.
3. Connect the equipment into an outlet on a circuit different from that to which the receiver is connected.
4. Consult the dealer or an experienced radio technician for help.

5. CE Mark Warning

This is a class B product. In a domestic environment, this product may cause radio interface, in which case the user may be required to make adequate measures.

A CE declaration of conformity is available on www.edimax.com





EDIMAX Technology Co., Ltd.
www.edimax.com