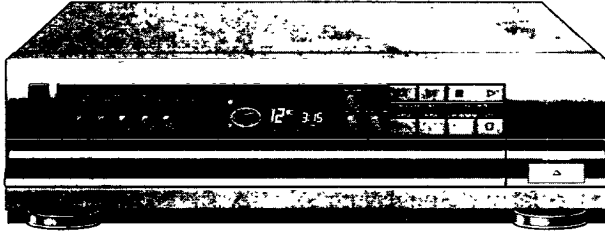


MAGNAVOX



CDC 550 / CDC 552

Compact Disc Changer

**WARNING**

**TO REDUCE THE RISK OF FIRE OR ELECTRIC SHOCK, DO NOT EXPOSE THIS APPLIANCE TO RAIN OR MOISTURE.**

**CAUTION**

**USE OF CONTROLS OR ADJUSTMENTS OR PERFORMANCE OF PROCEDURES OTHER THAN THOSE SPECIFIED HEREIN MAY RESULT IN HAZARDOUS RADIATION EXPOSURE.**

The Model and Serial Number of your unit will be found on the rear of the set. Please record the Model and Serial Number in the space provided below.



MODEL NUMBER: CDC 550 / CDC 552

---

SERIAL NUMBER:

---

*This set complies with the FCC-Rules, Part 15,*  
- 21 CFR 1040.10  
- 21 CFR 1040.11

	<b>CAUTION</b> RISK OF ELECTRIC SHOCK DO NOT OPEN	
<b>CAUTION</b> TO REDUCE THE RISK OF ELECTRIC SHOCK, DO NOT REMOVE COVER (OR BACK). NO USER-SERVICEABLE PARTS INSIDE. REFER SERVICING TO QUALIFIED SERVICE PERSONNEL		



This symbol is intended to alert the user of the presence of uninsulated 'dangerous voltage' within the product's enclosure, that may be of sufficient magnitude to constitute a risk of electric shock to persons.



This symbol is intended to alert the user of the presence of important operating and maintenance (servicing) instructions in the literature accompanying the appliance.

## SAFETY INSTRUCTIONS

### Read before operating equipment

This product was designed and manufactured to meet strict quality and safety standards. There are, however, some installation and operation precautions which you should be particularly aware of.

- 1 Read Instructions - All the safety and operating instructions should be read before the appliance is operated.
- 2 Retain Instructions - The safety and operating instructions should be retained for future reference.
- 3 Read Warnings - All warnings on the appliance and in the operating instructions should be adhered to.
- 4 Follow Instructions - All operating and use instructions should be followed.
- 5 Water and Moisture - The appliance should not be used near water - for example, near a bathtub, washbowl, kitchen sink, laundry tub, in a wet basement or near a swimming pool, etc.
- 6 Carts and Stands - The appliance should be used only with a cart or stand that is recommended by the manufacturer.



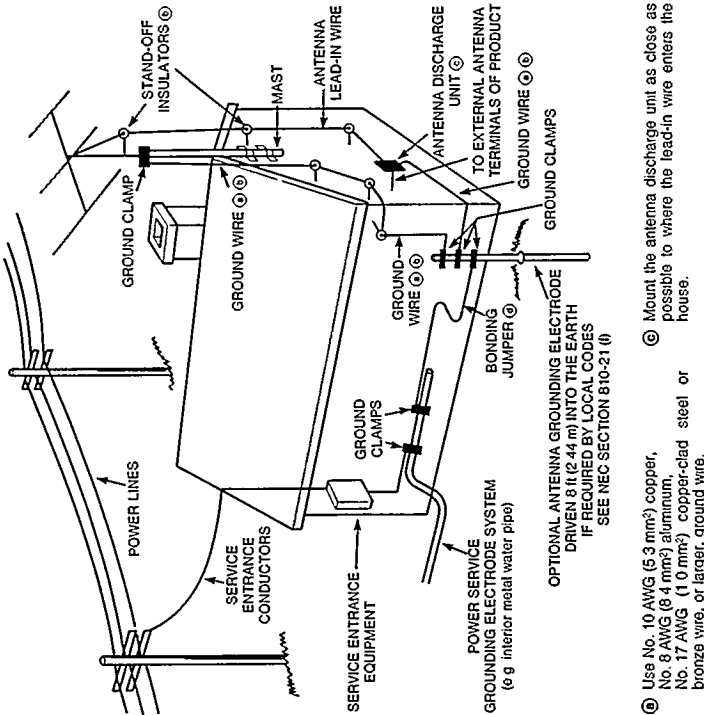
- 6A An appliance and cart combination should be moved with care. Quick stops, excessive force, and uneven surfaces may cause the appliance and cart combination to overturn.
- 7 Wall or Ceiling Mounting - The appliance should be mounted to a wall or ceiling only as recommended by the manufacturer.
- 8 Ventilation - The appliance should be situated so that its location or position does not interfere with its proper ventilation. For example, the appliance should not be situated on a bed, sofa, rug, or similar surface that may block the ventilation openings, or placed in a built-in installation, such as a bookcase or cabinet that may impede the flow of air through the ventilation openings.
- 9 Heat - The appliance should be situated away from heat sources such as radiators, heat registers, stoves, or other appliances (including amplifiers) that produce heat.
- 10 Power Sources - The appliance should be connected to a power supply only of the type described in the operating instructions or as marked on the appliance.
- 11 Grounding or Polarization - The precautions that should be taken so that the grounding or polarization means of an appliance is not defeated.



AC POLARIZED PLUG

## EXAMPLE OF ANTENNA GROUNDING ACCORDING TO THE NATIONAL ELECTRIC CODE INSTRUCTIONS CONTAINED IN ARTICLE 810 - 'RADIO AND TELEVISION EQUIPMENT'

FIG. A



- Ⓐ Use No. 10 AWG (5.3 mm<sup>2</sup>) copper, No. 8 AWG (8.4 mm<sup>2</sup>) aluminum, No. 17 AWG (1.0 mm<sup>2</sup>) copper-clad steel or bronze wire, or larger, ground wire.
- Ⓑ Secure the antenna lead-in and ground wires to the house with stand-off insulators spaced from 4-6 feet (1.22-1.83 m) apart.
- Ⓒ Mount the antenna discharge unit as close as possible to where the lead-in wire enters the house.
- Ⓓ Use jumper wire not smaller than No. 6 AWG (13.3 mm<sup>2</sup>) copper, or the equivalent, when a separate antenna-grounding electrode is used. See NEC Section 810-21 (j).

## NOTE TO THE CATV SYSTEM INSTALLER:

This reminder is provided to call the CATV system installer's attention to Article 820-22 of the NEC that provides guidelines for proper grounding and, in particular, specifies that the cable ground shall be connected to the grounding system of the building, as close to the point of cable entry as practical.

# Operating Instructions

## INSTALLATION

- In the base of the unit there is a red transit protection clamp. This clamp serves to secure the mechanism of the CD changer to protect it during transport. **Remove the red transit protection clamp** and store it in the hole ③ on the rear, see Fig. 2.
- Should you wish to transport the unit again, the mechanism must be secured once more in order to prevent damage.
- Always remove the CDs from the tray before moving the unit.
- Do not cover any vents and make sure that there is several centimetres ventilation room around the unit.
- Do not place the unit in direct sunlight or close to radiators, heaters, etc. This will help prevent overheating.

## CONNECTIONS AND CONTROLS

**Fig. 2**

- Ⓐ Jack for remote control (not on all versions)  
This jack can be connected to the remote jack of another unit. An optional cord is available from your dealer.
- Ⓑ CD OUT jacks  
For connection to the CD IN or AUX IN jacks on the amplifier.
- Ⓒ Hole for storing the transport clamp.
- Ⓓ Jack for power supply cord (on some versions a fixed cord)  
Connect the power supply cord supplied with the CD changer to this jack.  
**Warning:** Do not connect the player to the power supply without first checking that the voltage stated on the type plate (and/or the setting of the voltage selector ⑤) corresponds to the local voltage. If this is not the case, consult your dealer.  
*The type plate is on the rear of the player.*
- ⑤ Voltage selector (not on all versions)  
Use a screw driver or something similar to set the voltage selector to the local voltage.

**Fig. 1**

- ① POWER on/off switch. To disconnect the set from the power completely, withdraw the power plug from the wall outlet.
- ② CD tray.
- ③ DISC SELECT buttons - for selecting the disc.
- ④ Display.

- ⑤ PROGRAM - for storing the tracks of a program.
- ⑥ REVIEW - causes all the programmed track numbers to appear in the display.
- ⑦ INTROSCAN - to play the first few seconds of all tracks of all CDs in the tray.
- ⑧ PREV SEARCH
  - during PLAY mode:
    - press briefly to play the current track again. When pressed briefly again the player goes to the previous track.
    - hold down for rapid backward playback.
  - in the STOP position:
    - press briefly to jump to the previous track number (e.g. when programming).
- ⑨ SEARCH NEXT:
  - during PLAY mode:
    - press briefly to jump to the next track
    - hold down for rapid search forward.
  - in the STOP position:
    - press briefly to display the next number (e.g. when programming).
- ⑩ PLAY/PAUSE - for starting play of a track, or for interrupting play.
- ⑪ OPEN/CLOSE - for opening/closing the CD tray.
- ⑫ STOP for stopping play. When the CD is stationary the highest track number is displayed.
- ⑬ CLEAR PROGRAM - for clearing a programmed selection, or clearing the programmed tracks of a specific CD, when pressing the relevant DISC SELECT button ③ immediately thereafter.
- ⑭ REPEAT: to continuously repeat all CDs, a programmed selection, or the SHUFFLE program. Press again to cancel the Repeat function.
- ⑮ SHUFFLE button for playing all tracks of all CDs in a random order.
- ⑯ LOAD button - to rotate the disc turntable in the tray.
- ⑰ IR - sensor for remote control (not on all versions).
- ⑱ STAND BY indicator (not on all versions).

### REMOTE CONTROL UNIT, Fig. 6

(not on all versions)

- ① STAND BY: to switch off.
- ② CLEAR: to clear a program.
- ③ SCAN: same function as ⑦ of the CD player.
- ④ – DISC +: to select a disc.
- ⑤ PREV/NEXT: same as PREV/NEXT function of ⑧ and ⑨ of the CD player.
- ⑥ ⏪ SEARCH ⏩: same as SEARCH function of ⑧ and ⑨ of the CD player.
- ⑦ PLAY/PAUSE: same function as ⑩ of the CD player.
- ⑧ STOP: same function as ⑫ of the CD player.
- ⑨ REPEAT: same function as ⑭ of the CD player.

- 10 SHUFFLE: same function as 16 of the CD player.
- 11 REVIEW: same function as 6 of the CD player.
- 12 PROGRAM: same function as 5 of the CD player.

## OPERATION

### Warning

- Check that you have removed the red transit protection clamp on the underside of the player (but refit it during further transport).
- Always remove the CDs from the tray before moving the unit.

## TO PLAY DISCS

- Switch on the CD changer using the POWER on/off switch 1.
- Press OPEN/CLOSE 11 to open the CD tray 2.
- Holding the disc between the thumb and fingers of the outstretched hand, remove it from the packaging (Fig. 3) and place it with the label uppermost in the tray 2 (Fig. 5). Both standard 5" discs and 3" discs (CD singles) can be used.
- Use the PREFERRED POSITION in the tray, when you insert only *one* disc.
- When you wish to insert more discs, press the LOAD button 16 to rotate the turntable in the tray.
- Press the OPEN/CLOSE button 11 to close the tray 2, or push the tray to close.
- Press the PLAY/PAUSE button 10. The CD of the preferred position will now be played.
- To play another CD, select the desired disc number with one of the DISC SELECT buttons 3. Play begins automatically within a few seconds. In display 4 you can always see which disc and which track are being played. Play will stop after the last disc.

### Important

- If an E (for Error) appears in the display, the CD-player cannot read the disc. Possible causes are:
- you inserted the CD the wrong way; the label should face up (Fig. 5);
  - the surface of the disc is badly scratched or dirty, see 'Maintenance';
  - the lens is steamed up because of a sudden transition from a cold into a warm environment; do not clean the lens, but let the set acclimatize for a while.

### Changing discs during play

- Press OPEN/CLOSE 11 to open the CD tray 2. Two discs can now be changed.
- Press the LOAD button 16 to rotate the turntable in the tray, after which the other two discs can be changed.

### Selecting a different disc during play

- Press the desired number of the DISC SELECT buttons 3.
- In display 4 the disc number will appear and shortly afterwards the first track of the chosen disc will start to play.

### Selecting a different track during play

- Press SEARCH NEXT 9 (or PREV SEARCH 8) until the required track number appears in the display.
- Shortly after this, the chosen track will start playing.

### Starting again with the track that is currently playing

- Press PREV SEARCH 8 once.
- The track will be started again from the beginning.

### Searching for a passage during play

- Hold SEARCH NEXT 9 or PREV SEARCH 8 pressed down to search for the required passage. If you release the button, play will continue.

### Repeating play

- During play press REPEAT 14. The REPEAT indication lights up.
- All discs are played and then repeated.
- Press REPEAT again to stop the repeat function. The REPEAT indication goes out.
- Play continues as normal.

- REPEAT can also be used during a PROGRAM, SHUFFLE, and INTROSCAN.

### Introscaan

The INTROSCAN function can be used in both STOP and PLAY modes by pressing the INTROSCAN button 7. SCAN will then appear in the display. The INTROSCAN function causes the first few seconds of every track of all CDs to be played (in PLAY mode only the *remaining* tracks). After playing the opening seconds of a track the CD player jumps

to the beginning of the next track. The corresponding track number appears in the display ④.

- Pressing the PLAY/PAUSE button ⑩ cancels the INTROSCAN function. The CD plays normally from the current track onwards.

- If you press the SEARCH NEXT button ⑨ or the PREV SEARCH button ⑧ the unit remains in the INTROSCAN function and the first few seconds of the next track or the previous track respectively are played.

- If the INTROSCAN function is not cancelled by pressing the PLAY/PAUSE button ⑩ or the STOP button ⑫, the CD player automatically reverts to the STOP position at the end of the last CD.

### Shuffle play

- Press SHUFFLE ⑮ before or during play. The SHUFFLE indication lights up and a 'shuffle logo' appears in the display.

- All tracks will now be played in a random order. During play you can use SEARCH NEXT ⑨ to select a following *random* track, or PREV SEARCH ⑧ to play the same track again.

- Press SHUFFLE again if you wish to return to normal play.

### Interrupting play

- Press PLAY/PAUSE ⑩.

- PAUSE appears in the display.

- Press PLAY/PAUSE again to end pause.

- Play will be resumed where it was stopped.

### Stopping play

- Press STOP ⑫ if you wish to stop. The disc and track number which can be played will now appear in the display.

- Press OPEN/CLOSE ⑪ to remove the CDs.

## PROGRAMMING

By programming the player, you can play up to 50 tracks in any desired order. If you exceed the maximum of 50 tracks, F will appear in the display.

- Press PROGRAM ⑤.

- PROGRAM appears blinking for 5 seconds in the display together with the disc number. A further selection must be done *within the 5 seconds blinking period*, otherwise you have to press PROGRAM ⑤ again.

- Select the disc number - if necessary - from which

you wish to store tracks using the DISC SELECT buttons ③.

- Press SEARCH NEXT ⑨ (or PREV SEARCH ⑧) until the required track number appears in the display.

- Store the required number using PROGRAM ⑤.

- Each time you store a track, a P will appear and the display will blink another 5 seconds.

- Repeat this procedure for the other tracks to be programmed.

- If you program track numbers which do not exist, these will be ignored during play and erased from the memory.

- During normal playback (PLAY or SHUFFLE), you can program the number of the current track into the memory by pressing the PROGRAM button ⑤ twice.

### Reviewing the program

- Press REVIEW ⑥.

- All track numbers and CD numbers appear in the programmed order in the display.

### Erasing the program.

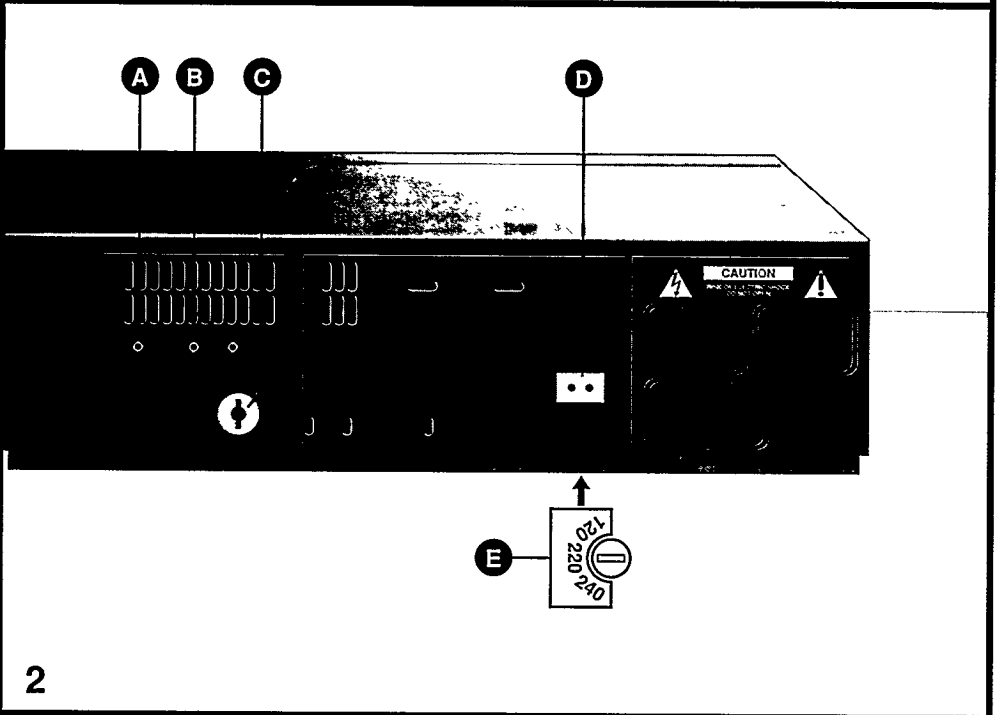
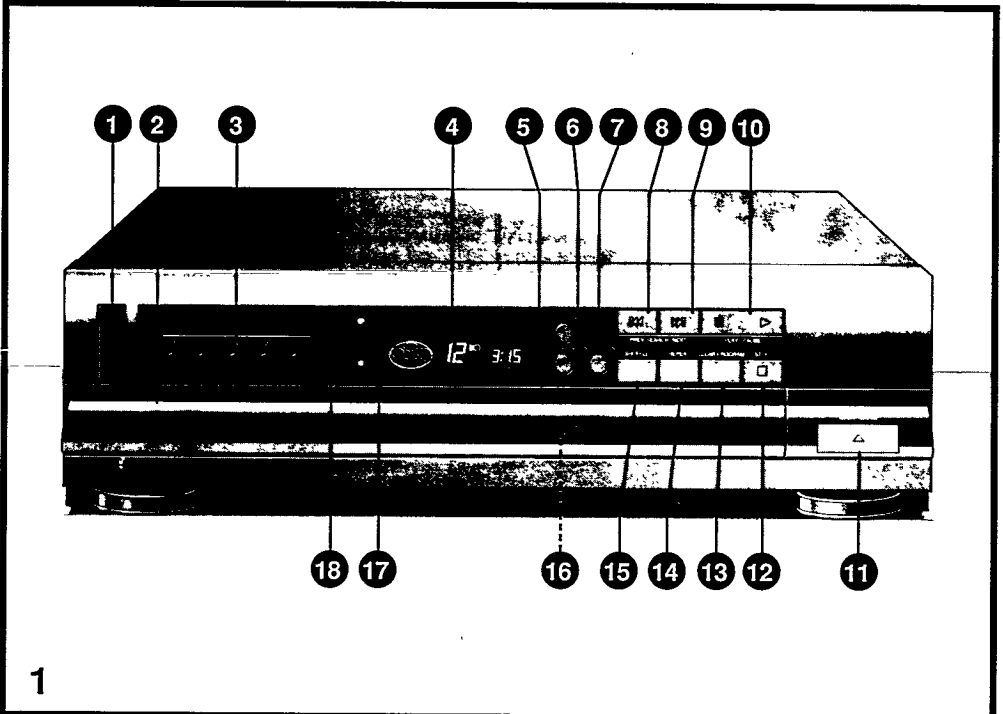
- If you wish to erase the program, press CLEAR PROGRAM ⑬.

- The program of a particular CD will be erased if you press CLEAR PROGRAM ⑬ and the relevant DISC SELECT button ③ immediately thereafter.

### Playing the program

- Beginning from the STOP mode, press PLAY/PAUSE ⑩.

- Play begins with the first item in the program.



## GENERAL INFORMATION

---

### Maintenance

#### *The disc*

If you handle the discs carefully, cleaning will not be necessary. Dust or dirt can be removed using a soft, lint-free cloth. Always wipe the cloth in a straight line from the center to the edge of the disc (Fig. 4).

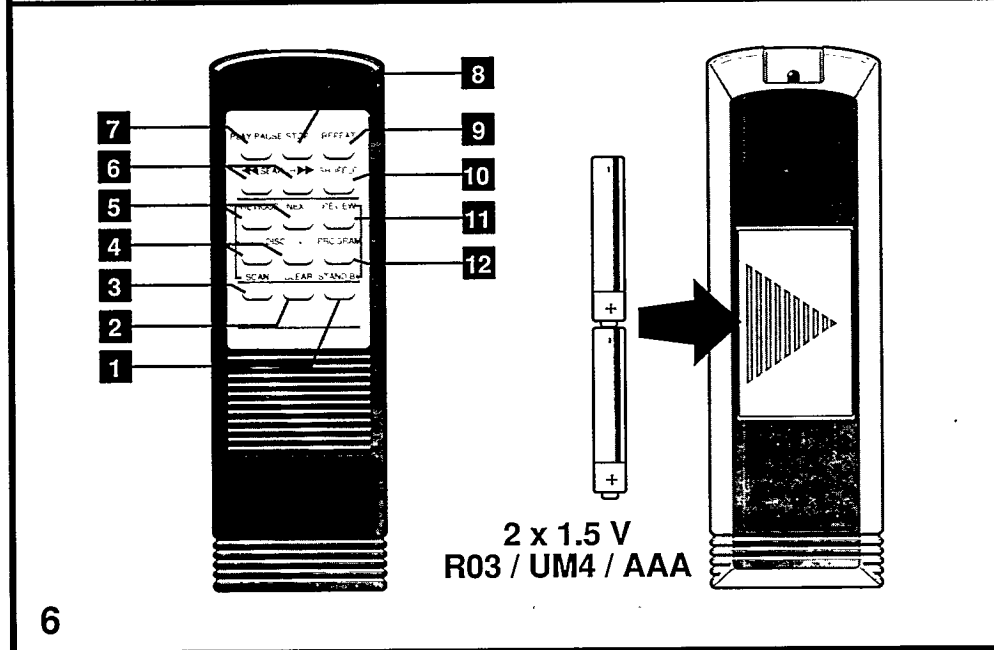
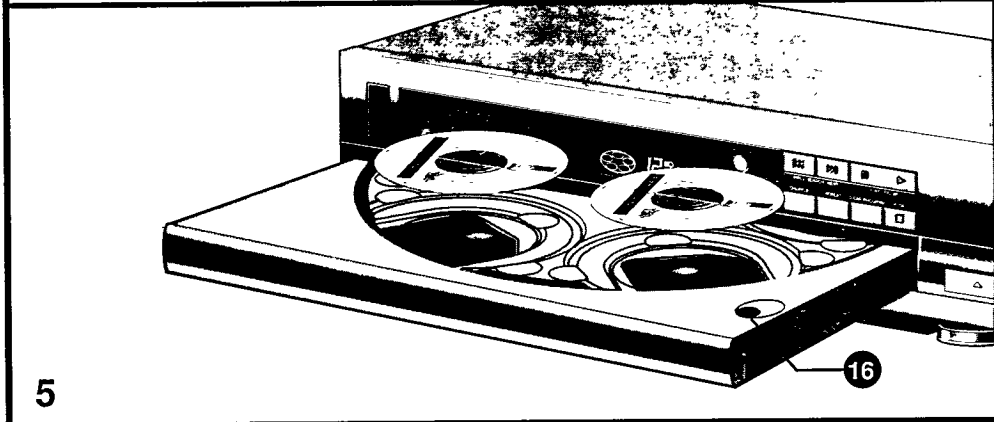
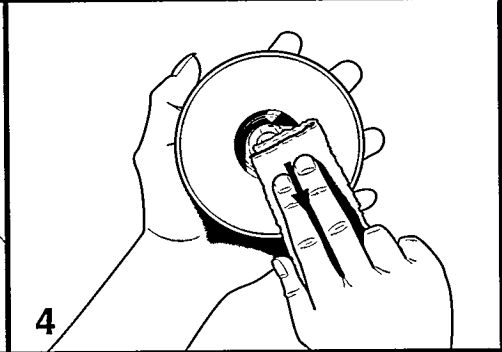
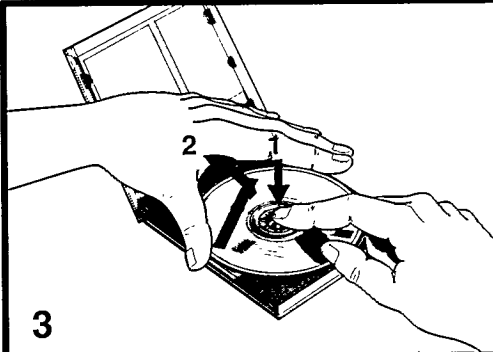
Never use cleaning agents such as are used for conventional grammophone records.

Never write on the disc label or on a sticker which has been placed on the label. This can cause irreparable damage to the music tracks.

#### *The player*

Never oil or lubricate the CD mechanism. Keep the CD compartment free of dust. The CD tray should therefore never be left open unnecessarily.





# LIMITED WARRANTY

## AUDIO PRODUCTS

- One (1) Year Carry-In Labor Warranty
- One (1) Year Carry-In Service Parts Warranty

\* For purchases outside the U.S., see applicable warranty from country of purchase.

This warranty gives you specific legal rights, and you may also have other rights which vary from state to state.

### Replacement Parts and Service Labor

For one (1) year from the date of purchase, an Authorized Service Center will replace any part found defective and will repair any product defect without charge to you for parts or labor. Replacement parts installed during the warranty period are warranted only for the balance of the original warranty period.

### Who is Protected? ... Where?

This warranty is extended to the original retail purchaser for products purchased and used in the U.S.A., Puerto Rico and the Virgin Islands. If you move within these areas, an Authorized Service Center in your area will honor this warranty for the remainder of the original warranty period.

### What the Purchaser Must Do

Before you call for service, check your operating instruction booklet. A slight adjustment of the customer controls discussed in your instruction booklet may save you a service call.

### How to Get Warranty Service

To obtain Warranty Service you must deliver your Audio Unit, with evidence of the purchase date, to an Authorized Service Center for repair if service is required during the warranty period. When repair is completed, you must pick up the unit at the Service Center.

### Warranty Exclusions

#### Your Warranty Does Not Cover:

- Labor charges for installation or set-up, adjustment of customer or preference controls, and installation or repair of audio antenna systems outside the unit.
- Product repair and/or part replacement because of misuse, accident, unauthorized repair or other cause not within the control of Philips Consumer Electronics Company
- Reception problems caused by signal conditions or antenna systems outside the unit.
- An Audio Unit purchased, used or serviced outside the U.S.A., Puerto Rico and the Virgin Islands, or used for commercial or institutional purposes (included but not limited to products used for rental purposes).
- Incidental or consequential damages resulting from the product or use of the product. Some states do not allow the exclusion of incidental or consequential damages, so the above exclusion may not apply to you.

ALL IMPLIED WARRANTIES INCLUDING IMPLIED WARRANTIES OF MERCHANTABILITY AND FITNESS FOR A PARTICULAR PURPOSE, ARE LIMITED IN DURATION TO THE DURATION OF THIS EXPRESS WARRANTY. Some states do not allow limitations on how long an implied warranty lasts, so the above limitation may not apply to you.

### Important Reminder

Please fill out and mail your Warranty Registration Card promptly. It will be easier for us to notify you if it should ever be required. The return of the Warranty Registration Card is not a condition to Warranty Coverage.

**Philips Service Company**  
P.O. Box 55 - Jefferson City - Tennessee TN 37760  
☎ (615) 475-0317

## How To Get Service On Your Audio Unit Through Philips Factory Service

### To obtain expedient IN or OUT-of-warranty repair:

- 1 Contact the nearest Philips Factory Service Center, listed to the right, to obtain the cost of out-of-warranty repair for your model product. \*
  - 2 Pack your Audio Unit in a suitable carton for safe shipment.
  - 3 Ship the product to the nearest Factory Service Center along with a letter inside the carton describing the problem. Be sure that the letter includes your name, address and telephone number. Enclose your check or money order in the amount quoted you by the Factory Service Center.
  - 4 When your product is received, it will be repaired in a manner that meets Philips' high quality standards and returned to you by prepaid transportation.
- \* IN or OUT-of-warranty service can also be obtained by delivering the Audio Unit to a Service Center in your area.

### Philips Factory Service Centers

- Atlanta** - 1898 Leland Drive,  
Marietta, GA 30067 ..... ☎ (404) 952-3279
- Boston** - 41 Second Avenue,  
Burlington, MA 01803 ..... ☎ (617) 272-4825
- Chicago** - 500 East Touhy Avenue,  
Des Plaines, IL 60018 ..... ☎ (708) 827-9405
- Cleveland** - 24090 Detroit Avenue - Rear,  
Westlake, OH 44145 ..... ☎ (216) 899-2040
- Connecticut** - 77 Grassmere Avenue,  
West Hartford, CT 06110 ..... ☎ (203) 233-5151
- Dallas** - 1413 Bradley Lane,  
Carrollton, TX 75007 ..... ☎ (214) 323-8335
- Los Angeles** - 12889 Moore Street,  
Cerritos, CA 90701 ..... ☎ (213) 637-7293
- Miami** - 2099 West Atlantic Boulevard,  
Pompano Beach, FL 33069 ..... ☎ (305) 978-0467
- New Jersey** - 178 Manor Road,  
East Rutherford, NJ 07073 ..... ☎ (201) 935-0600
- New York** - 116 Charlotte Avenue,  
Hicksville, NY 11801 ..... ☎ (516) 933-1780
- Philadelphia** - 3599 Meadow Lane,  
Cornwell Heights, PA 19020 ..... ☎ (215) 638-7500
- Tennessee** - 112 Polk Street,  
Greenville, TN 37743 ..... ☎ (615) 636-5802

EL 3709-6

89/10

**Philips Consumer Electronics Company**  
A Division of North American Philips Corporation