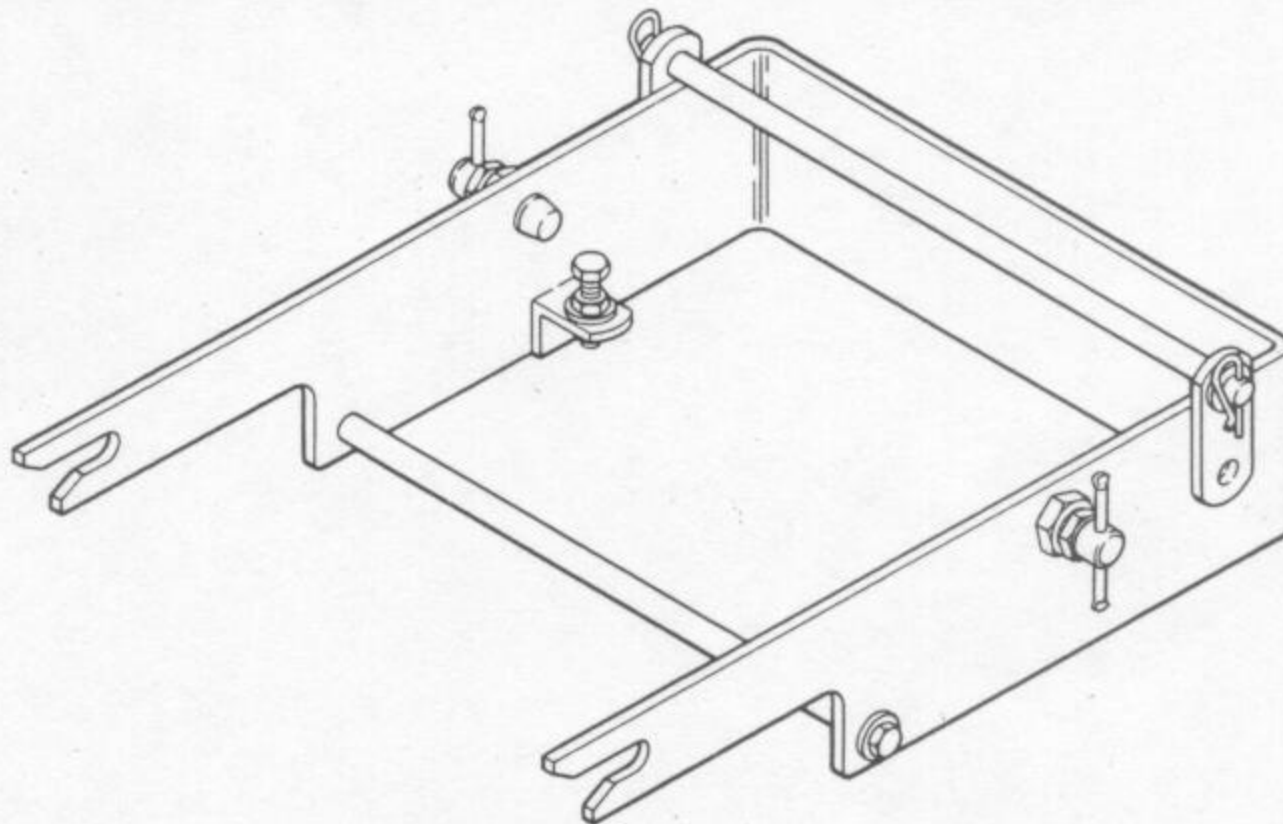


**Cub Cadet**

**Power Equipment**

# Owner's Manual

## FRONT WEIGHT BRACKET KIT



## INSTALLATION INSTRUCTIONS Model Number 443



Front Weight Bracket Kit 190-443-100 is not to be used with front Mule Drive attachments.

**Important:**  
**Read Safety Rules and Instructions Carefully**

Thank you for purchasing an American-built product.

**CUB CADET CORPORATION • P.O. BOX 36930 • CLEVELAND, OHIO 44136**

# TO THE OWNER

Contained in this manual are instructions covering the installation of the Front Weight Bracket Kit (190-443-100) to your tractor. Installation of weights (759-3388) for use on the bracket is also explained.

The Front Weight Bracket Kit and a minimum of 3 and a maximum of 5 weights MUST be used on tractors utilizing rear Power Take-Off (PTO) equipment. Each weight weighs 42 pounds.

The weights are purchased separately and can be obtained through your local authorized *Cub Cadet* dealer. Weight part number is 759-3388.

Before beginning installation, refer to Figure 1 to familiarize yourself with the parts and nomenclature of the Front Weight Bracket Kit.

## NOTE

The Front Weight Bracket Kit is NOT to be used with Front Mule Drive equipment.

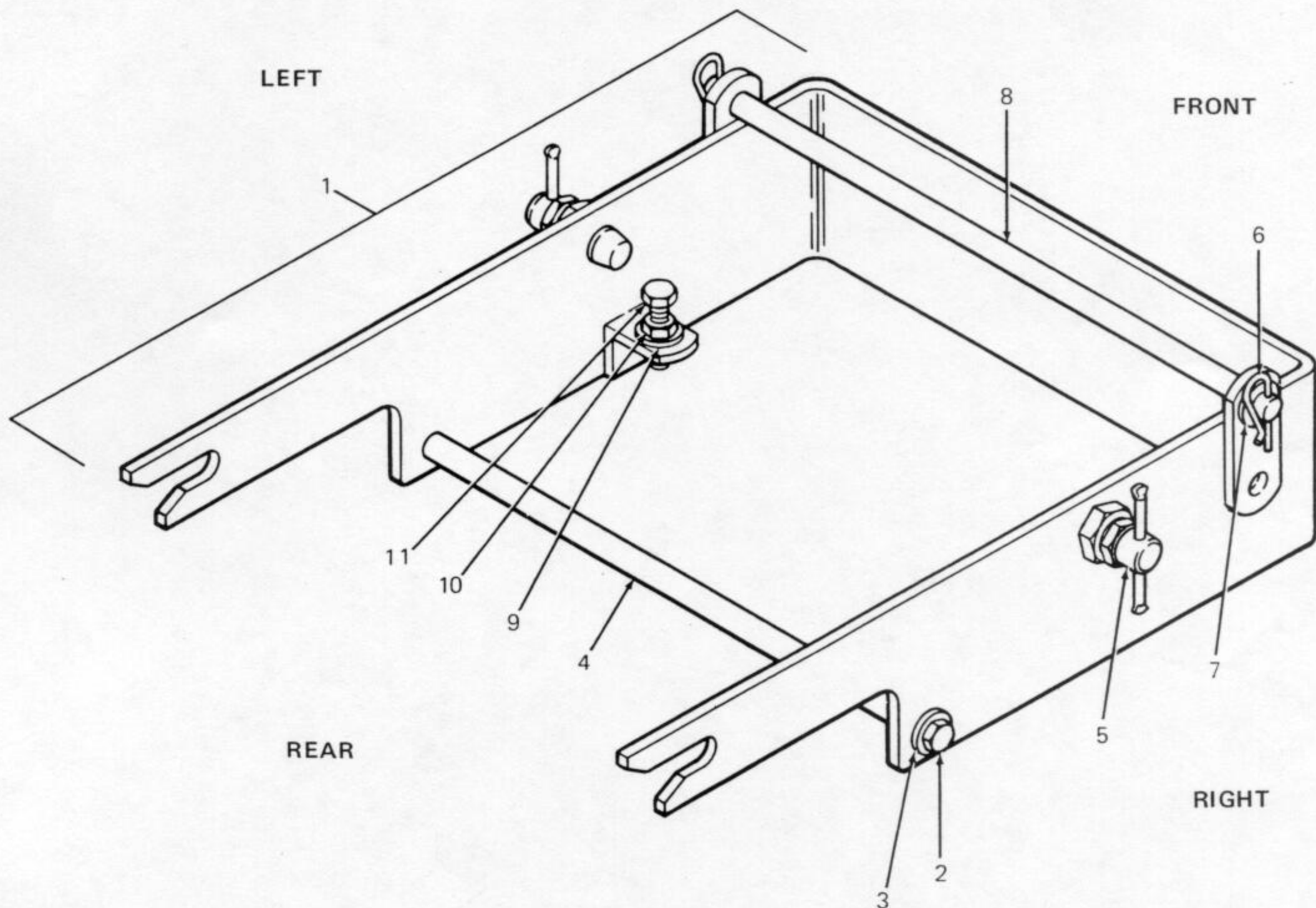


Figure 1

- |                                 |                 |
|---------------------------------|-----------------|
| 1. Front Weight Bracket Kit     | 7. Flat Washer  |
| 2. Hex Screw                    | 8. Rod          |
| 3. Bell Washer                  | 9. Flat Washer  |
| 4. Carriage Bracket Control Rod | 10. Hex Jam Nut |
| 5. Threaded Pin                 | 11. Stop Bolt   |
| 6. Hairpin Cotter               |                 |

## INSTALLATION OF FRONT WEIGHT BRACKET KIT TO TRACTOR

Refer to Figure 2, and proceed as follows:



### WARNING

Before installing the Front Weight Bracket Kit, the tractor must be placed on a hard and level surface. The tractor engine must be shut off and the parking brake applied.

1. Locate the frame opening for the threaded pin. If there is a weld nut in the frame opening it should be drilled out or removed prior to installation of the weight bracket.
2. Stop bolt (11, Figure 1) should be screwed down as far as possible. If not, loosen jam nut (10), and turn stop bolt down.
3. Position left and right side threaded pins (5) so that they are flush with the inside of the bracket.
4. Position the Front Weight Bracket Kit so that the rear of the bracket points toward the tractor shoulder bolts, and the bottom of the bracket is toward the ground.
5. Slide the Front Weight Bracket Kit onto the tractor frame so that the rear of the bracket engages the tractor frame shoulder bolts, and the carriage bracket control rod (4) engages the latch receiver and locks into place.
6. Position the right and left side threaded pins so they engage the openings in the tractor frame.
7. Loosen jam nuts (10) and turn stop bolts (11) until they touch the frame. Tighten jam nuts (10).

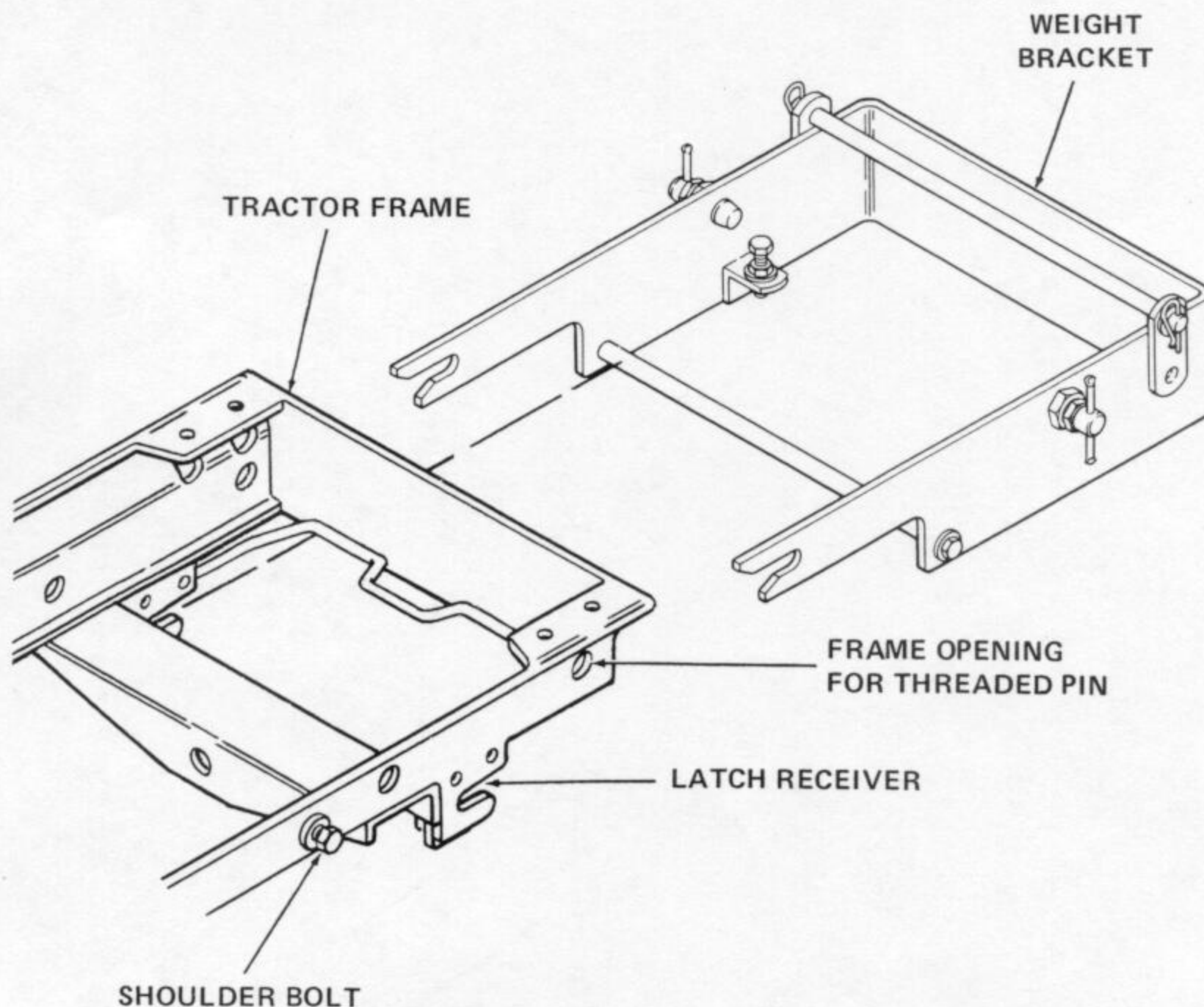


Figure 2

## INSTALLATION OF WEIGHTS (759-3388) TO FRONT WEIGHT BRACKET KIT

Refer to Figure 3 and proceed as follows:

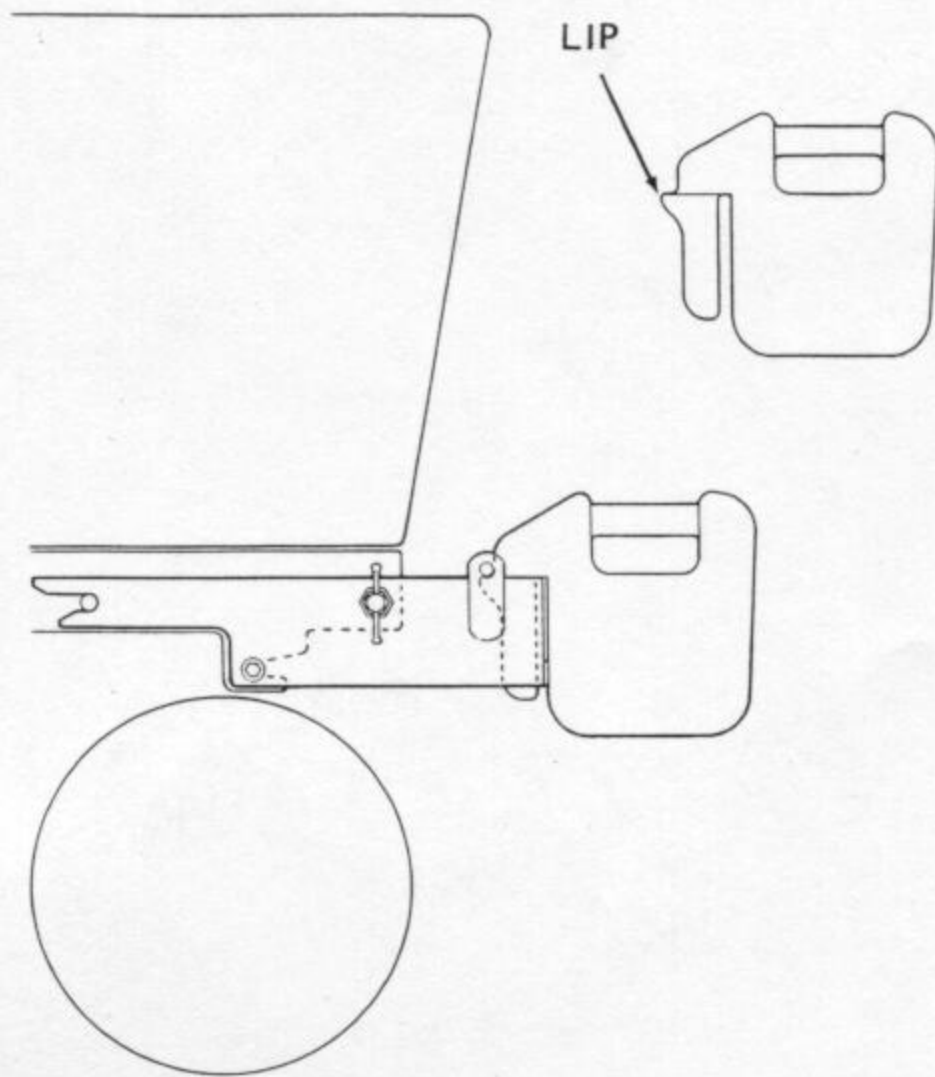


Figure 3



## WARNING

A minimum of 3 and a maximum of 5 weights must be used with tractors utilizing rear PTO driven equipment.

1. Remove the hairpin cotter (6, Figure 1) and flat washer (7) from the right or left side of the Front Weight Bracket Kit, and remove the rod (8).
2. Place the weights on the Front Weight Bracket Kit as shown in Figure 3.
3. Slide the rod back in place making sure that the rod is positioned directly OVER the lap of each weight. Secure rod with flat washer and hairpin cotter.



## CAUTION

Following installation of the weights, pull upward on each weight to confirm that it is securely positioned.