



ATD-80152

52 LED Cordless Worklight

Owner's Manual



Features and Specifications:

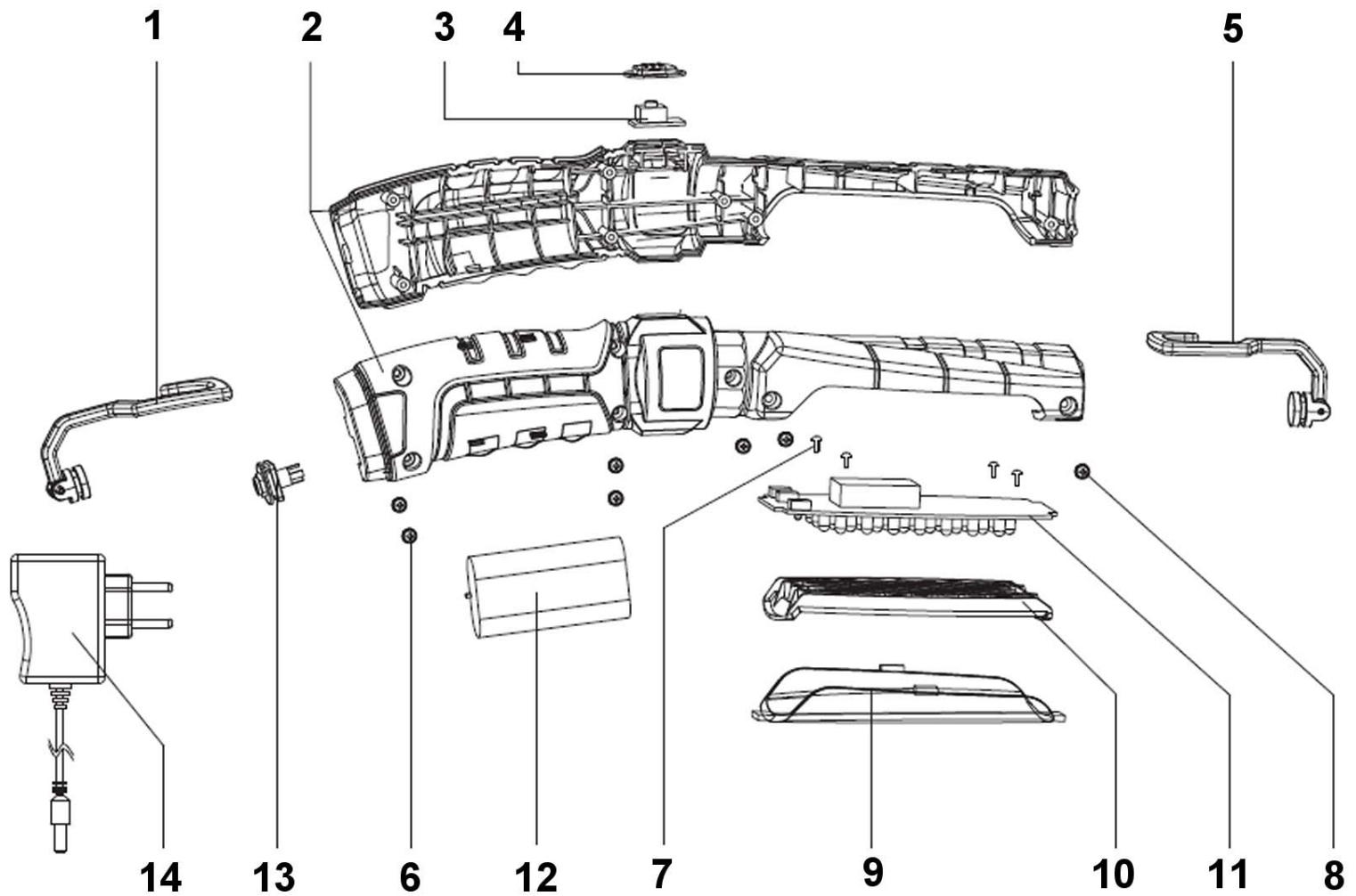
- 52 Super Bright Premium White LEDs
- Reflector focuses light intensity on work area
- ABS handle with double injection, impact protection and ergonomic design provide comfortable usage
- 7.4V 2000mAh Li-Ion battery pack, with auto shut off function and overcharge protection can prolong the battery life
- With low voltage indicator on the light
- Dual 360°swivel hooks for hanging versatility
- UL listed charger

Operating instructions

- To use, plug the unit into any 110-120 VAC power source, such as a wall receptacle. Let the unit fully charge until the green indicator on the charger turns on before use.
- Charge this light every month if not in constant use, and after each use if it is used often to insure longevity.
- Press the switch at the back of the handle to turn unit on, press the switch again to turn it off.

Cautions

- For indoor use only - don't use in or around, tubs, showers, sinks, pools, hot tubs, or in a wet environment
- Use only the recommended voltage and frequency requirements
- Do not use if the cords or clear lens are damaged
- Keep out of reach of children
- Do not operate light with wet hands.
- Keep lamp away from hot objects.



ITEM#	ORDERING PART#	PART DESCRIPTION
1	PRT80151-01	TOP HOOK
2	PRT80151-02	HANDLES (LEFT AND RIGHT)
3	PRT80151-03	BUTTON SWITCHES (WITH PCB)
4	PRT80151-04	BUTTON
5	PRT80151-05	END HOOK
6	PRT80151-06	SCREW 1
7	PRT80151-07	SCREW 2
8	PRT80151-08	SCREW 3
9	PRT80151-09	CLEAR LENS
10	PRT80152-10	REFLECTOR
11	PRT80152-11	PCBA
12	PRT80152-12	LI-ION BATTERY
13	PRT80152-13	DC CHARGING CONNECTOR
14	PRT80152-14	CHARGER