



## RHO-9053

### Professional 26W Fluorescent Light

#### Features

- 25', 16/3, SJTOW cable.
- Professional body style.
- Flat base for standing / table applications.
- Lightweight, energy efficient, & cool operating electronic ballast.
- Dual 360° rotating hooks.
- Dual switches operates single/double bulbs.
- Convenient grounded outlet in handle.
- 'Power-on' indicator light in receptacle.
- Ergonomic features in handle help give a more secure feel.
- Added 'drop' protection with a PVC bumper at the top.
- Specially designed 'EZ Re-Lamp' replaceable bulb (*see attached*).
- Covered by 3 US patents.

**E-Zee Relamping system makes changing fluorescent lamps almost effortless...**



**STEP 1. Take off lens by removing side screws.**



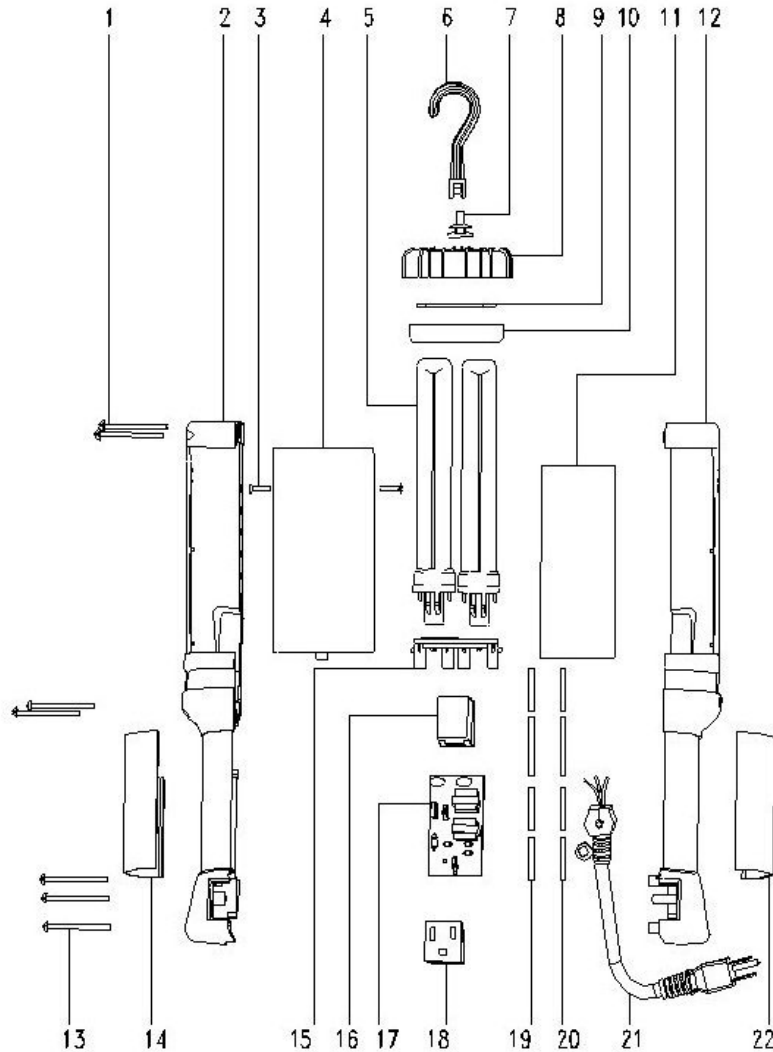
**STEP 2. Pull bulbs effortlessly forward to a 30° angle and remove top silicon bulb holder.**



**STEP 3. Easily remove old bulb and replace with new bulb. Replace top bulb holder, push bulbs back in the case and close lens to finish!**



# RHO-9053



ITEM#	ORDERING PART#	PART DESCRIPTION
1	PRT9053-01	SCREW BB3.5X45
2	PRT9053-02	HANDLE LEFT
3	PRT9053-03	SCREW FA3X9
4	PRT9053-04	CLEAR LENS
5	EIK-DT1341	BULB (X2)
6	PRT9050-06	HOOK
7	PRT9050-07	HOOK HOLDER
8	PRT9053-08	TOP HANDLE PROTECTOR
9	PRT9053-09	TOP LENS
10	PRT9053-10	BULB BRACKET
11	PRT9053-11	REFLECTOR PAPER

ITEM#	ORDERING PART#	PART DESCRIPTION
12	PRT9053-12	HANDLE RIGHT
13	PRT9053-13	SCREW BB3 2X32
14	PRT9053-14	LEFT HANDLE PROTECTOR
15	PRT9053-15	LAMP HOLDER
16	PRT9053-16	SWITCH
17	PRT9053-17	PCB WITH INDICATOR LIGHT
18	PRT9053-18	OUTLET
19	PRT9053-19	BLACK WIRE
20	PRT9053-20	WHITE WIRE
21	PRT9050-21	POWER CORD
22	PRT9053-22	RIGHT HANDLE PROTECTOR