

## Ordering Information

Family	Lamps	Length	Type	Mounting	Shielding	Voltage	Options
<b>SQ6</b>	<b>3</b>		<b>B</b>				
	3 = 3-Light	4 = 4-Foot 8 = 8-Foot	B = Bi-directional	P = Suspended W = Wall	S = Straight Blade Louver C = Paracube 1/2" L = Lens K19 N = None P = Parabolic Louver	1 = 120v 2 = 277v 3 = 347v D1 = Dimming 120v D2 = Dimming 277v E1 = Emergency 120v E2 = Emergency 277v	X4 = 4th Wire X5 = 5th Wire Blank = No Opt. DS = Dual Switch

Complete ordering instruction below.

## Features

- Housing:** 20 gauge pre-painted die formed steel. Weldless, die-cast bulkheads allowing casting to casting luminaire connection. ABS Cast plastic end caps, painted white to match housing, fastenerless attachment.
- Lamp:** Three F32T8 fluorescent lamps per 4-foot section. Provided by others.
- Reflector:** Precision die-formed high reflectance white pre-painted steel.
- Straight Blade Louver:** Lift and shift, constructed from die-formed aluminum and finished to match the housing. Louver blades are 1" (2.54cm) high on 1-1/8" (2.86cm) centers.
- Lens:** Extruded 100% acrylic clear prismatic lens.
- Paracube Louver:** Lift and shift, injection molded metalized louver with 1/2" (1.27cm) x 1/2" (1.27cm) cubes.
- Parabolic Louver:** Lift and shift, constructed of die-formed semi-specular aluminum. Louver blades are 1" (2.54cm) high on 1-1/2" (3.81cm) centers.

## Electrical

**Electronic Ballast:** 3 conductor, 18 gauge wire. Color-coded quick connectors allow easy connection for modular fixtures. Power feed is 18 gauge white cord. Factory installed ballast disconnect allows the ballast to be disconnected from and reconnected to incoming power under load without turning the entire circuit off.

**Dimming:** Advance Mark X, use Advance compatible two-wire control (no extra lead required).

**Emergency Battery Pack:** 450 Lumens @ 90min.

## Mounting

**Cable Mounting:** (not shown) 4-1/2" (11.43cm) diameter canopy finished white enamel, 1/16" (0.16cm) diameter stainless steel aircraft cable adjustable up to 36" (91.44cm) Draw-tight connector to create hairline seam between joiner modules.

**Stem Mounting:** (not shown) 4-1/2" (11.43cm) diameter canopy finished white enamel, 1/2" (1.27cm) diameter stem. Standard length is 24" (61.30cm) from the ceiling to the top of the lighting fixture. can be cut to length on the job. Self-aligning swivel provides adjustability up to 42° of slopes.

**Wall Mounting:** Precision die-formed steel bracket system that hooks and locks onto the wall, painted white.

## Finish

Pre-painted textured white finish. Shipped with plastic adhesive film protector.

## Options and Accessories

**Dual Switching:** Order the DS option for separate row switching. DS option comes complete with the 4th through wire option.

**4 and 5 wire:** Order X4 for EM battery. For non-standard dimming options, order X5 option for Advance Mark VII, DALI and ESI. Order X4 for Lutron Hi-Lume and ECO-10. Consult factory for any additional wiring conditions.

## Ordering Instructions

### Individual Fixtures:

- Order number of Modules required.
- Order one Power Feed End Set (Cable or Stem) per Module.

### Continuous Runs:

- Determine run length.
- Order the appropriate number of Modules for the complete run.
- Order one Power Feed End Set (Cable or Stem) per run.
- Order one Cable or Stem Assembly per Modules minus one per run.
- For runs that exceed amperage limits, order the appropriate number of Cable/Cord Assemblies (not required for stem).

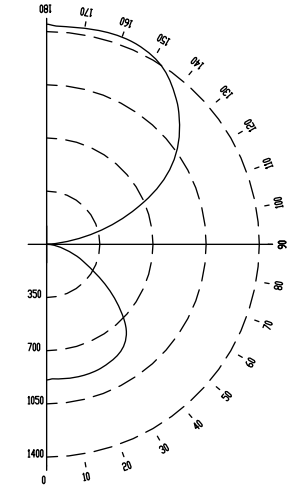
## Labels

UL, cUL and I.B.E.W.

Job Information	Type:
<b>Job Name:</b>	
<b>Cat. No.:</b>	
<b>Lamp(s):</b>	
<b>Notes:</b>	

631 Airport Road, Fall River, MA 02720 • (508) 679-8131 • Fax (508) 674-4710  
 We reserve the right to change details of design, materials and finish.  
 www.lightolier.com © 2008 Philips Group • F1208

### Performance & Quick Calculators



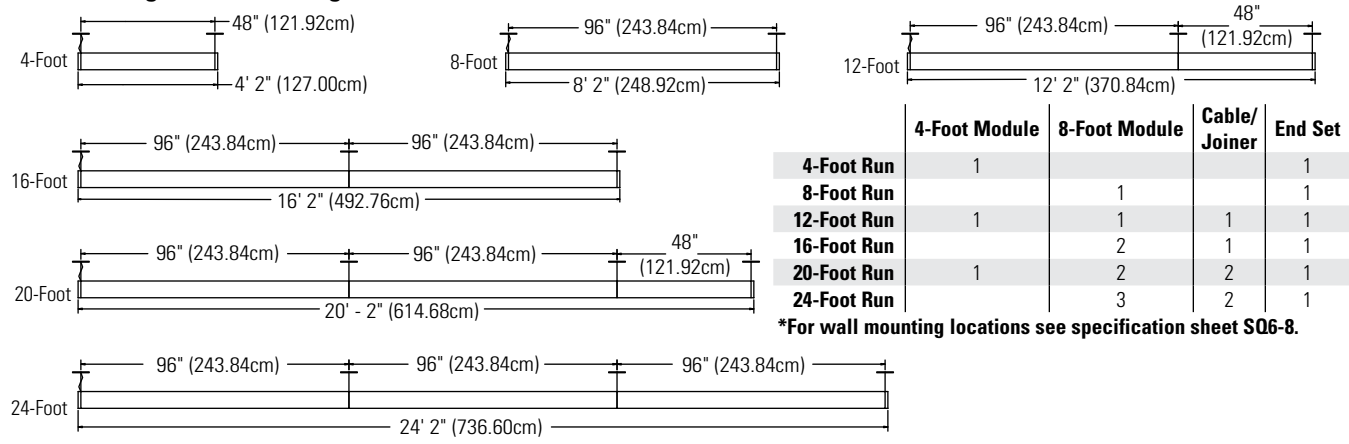
ZONE DEG.	CANDLEPOWER				
	0	22	45	67	90
180	1449	1449	1449	1449	1449
175	1451	1454	1443	1436	1437
165	1401	1411	1427	1442	1449
155	1311	1339	1387	1429	1442
145	1170	1226	1307	1367	1373
135	988	1081	1174	1221	1230
125	769	899	980	1035	1039
115	522	675	743	771	752
105	266	423	407	409	391
95	44	103	72	69	57
90	0	1	3	4	0
85	17	22	23	26	29
75	78	83	86	106	118
65	149	161	174	222	266
55	234	252	316	419	483
45	353	394	495	642	729
35	513	551	639	769	855
25	659	693	754	839	887
15	786	804	842	878	897
5	881	884	888	887	888
0	893	893	893	893	893

ROOM CAVITY RATIO	COEFFICIENTS OF UTILIZATION								
	% EFFECTIVE CEILING CAVITY REFLECTANCE								
	80			70			50		
	% WALL REFLECTANCE								
	50	30	10	50	30	10	50	30	10
0	81	81	81	73	73	73	57	57	57
1	71	68	66	64	62	59	51	49	47
2	62	58	54	56	52	49	45	42	40
3	55	49	45	50	45	41	39	36	33
4	49	43	38	44	39	35	35	31	29
5	43	37	33	39	34	30	31	27	25
6	39	33	28	35	30	26	28	24	21
7	35	29	25	32	26	23	25	22	19
8	32	26	22	29	23	20	23	19	17
9	29	23	19	26	21	18	21	17	15
10	26	21	17	24	19	16	19	16	13

Report No: ITL53185  
 Catalog No.: SQ634BPS1  
 Lamps: 3-F32T8  
 Lumens: 2950  
 Efficiency: 79.5%

ZONAL LUMEN SUMMARY			
ZONE	LUMENS	% BARELAMP	% LUMINAIRE
0-90	2104	23.8	29.9
90-180	4932	55.7	70.1
0-180	7036	79.5	100.0

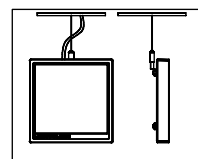
### Fixture Lengths & Mounting Locations



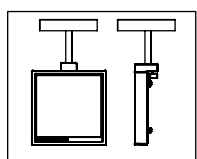
	4-Foot Module	8-Foot Module	Cable/Joiner	End Set
4-Foot Run	1			1
8-Foot Run		1		1
12-Foot Run	1	1	1	1
16-Foot Run		2	1	1
20-Foot Run	1	2	2	1
24-Foot Run		3	2	1

\*For wall mounting locations see specification sheet SQ6-8.

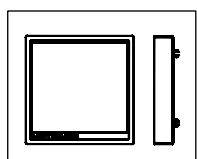
### Mounting Accessories



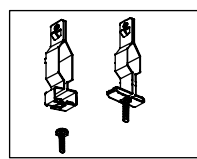
**Power Feed End Set:**  
 3 Wire Cord: SQ6EC36  
 4 Wire Cord\*: SQ6EC36X4  
 5 Wire Cord\*: SQ6EC36X5



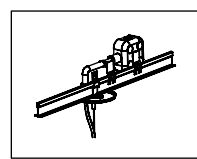
**End Set Stem:**  
 SQ6ES24



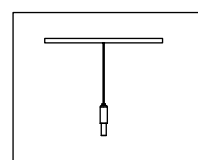
**End Set Wall:**  
 SQ6E



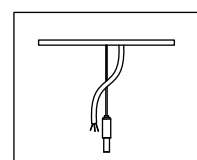
**Ceiling Grid Kit:**  
 CGK  
 Includes both standard 1" Tee and Slot Tee Clip.  
 Order one for every non-powered suspension point.



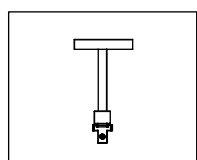
**Ceiling Grid Kit Power:**  
 CGKP  
 Includes the hardware necessary to install a power feed above a suspended ceiling. J-box and Flex not included. Order one for every powered suspension point.



**Intermediate Cable Suspension:**  
 SQ6C36



**Cable Cord Assembly:**  
 3 Wire Cord: SQ6CC36  
 4 Wire Cord\*: SQ6CC36X4  
 5 Wire Cord\*: SQ6CC36X5



**Intermediate Suspension Stem:**  
 SQ6S24

\*Use for dimming or emergency battery packs.

### Job Information Type:

631 Airport Road, Fall River, MA 02720 • (508) 679-8131 • Fax (508) 674-4710  
 We reserve the right to change details of design, materials and finish.  
 www.lightolier.com © 2008 Philips Group • F1208