

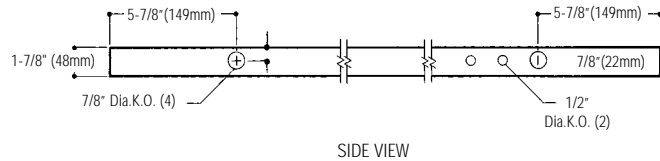
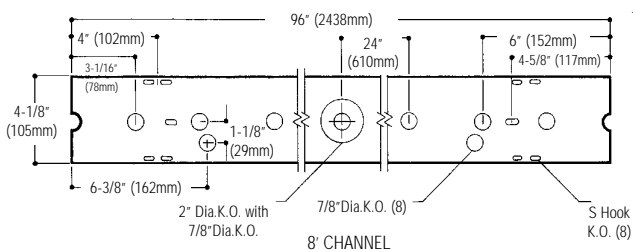
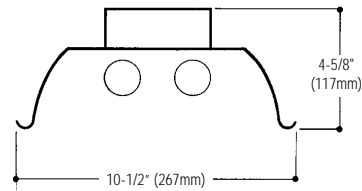
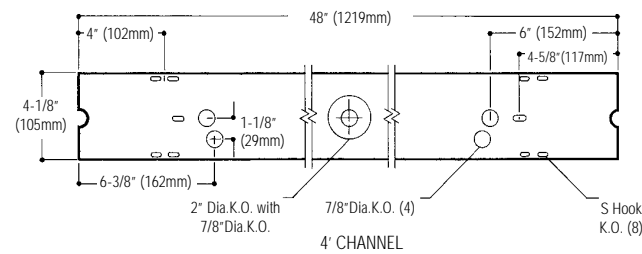
# KW Industrial SL Solid Top Fluorescent **KW SERIES SL**

## Features

- Reflectors are embossed for rigidity.
- Reflector sides are turned up for rigidity and safe handling.
- Solid top reflector, standard.
- 10% aperture reflector, optional.
- Reflectors easily installed with quarter turn fasteners. No tools required.
- 4-1/8" wide heavy duty channel of code gauge die-formed steel.
- Combination end cap/coupler requires no tools for installation.
- Suitable for individual or row mounting.
- Fully enclosed wiring.
- Multiple knockouts for convenient installation.
- Optional hangers, wire guards and aligners.
- Optional heavy duty coupling.



## Dimensions



### Job Information

### Type:

**Job Name:**

**Cat. No.:**

**Lamp(s):**

**Volts/Ballast:**

Lightolier a Genlyte Thomas Company

www.lightolier.com

Technical Information: (978) 657-7600 • Fax (978) 658-0595

631 Airport Road, Fall River, MA 02720 • (508) 679-8131 • Fax (508) 674-4710

We reserve the right to change details of design, materials and finish.

Copyright 2002 Lightolier

Section 7/Folio Q70-50

**LIGHTOLIER**



# KW Industrial SL Solid Top Fluorescent KW SERIES SL

### Photometry

Report No: G42322  
Catalog No:  
KW8S296SL120LE  
Lamp Type: 2F96SL  
Lumens Per Lamp: 5500  
Total Efficiency: 90.2%  
CIE Type: Direct  
Spacing Criteria: 1.5  
Shielding Angle: 180

Model No. KW8S296SL120LE

LER = FI - 69.1 IW - 126 BF - 0.88  
Comparative yearly lighting energy cost per 1000 lumens = \$3.48

#### coefficients of utilization- zonal cavity method

RC	20			50			30		
	80	80	80	80	80	80	80	80	80
RW	70	50	30	50	30	10	50	30	10
1	97	92	88	85	82	80	81	79	77
2	87	79	73	74	69	64	70	66	62
3	79	69	61	64	58	53	61	56	51
4	72	60	52	56	50	44	54	48	43
5	66	54	45	50	43	38	48	42	37
6	60	48	39	45	38	32	43	37	32
7	56	43	35	41	34	28	39	33	28
8	52	39	31	37	30	25	35	29	25
9	48	36	28	34	27	22	33	27	22
10	45	33	26	31	25	20	30	24	20

### Ordering Information

Explanation of Catalog Number. Example: KW8S296SL120LEGLR

**KW**

STANDARD INDUSTRIAL:  
4-1/8" Wide:  
Channel

[ ]

FIXTURE LENGTH:  
4=48"  
8=96"

[ ]

REFLECTOR:  
S=Solid Top  
A=10% Uplight

**2**

NUMBER OF LAMPS IN WIDTH:  
(By Others)  
2 Lamp Only

[ ]

LAMP WATTS:  
48SL=38w T12 Slimline  
(4' Length)  
59SL=59w T8 Slimline  
(8' Length)  
96SL=75w T12 Slimline  
(8' Length)

[ ]

VOLTAGE:  
120 or 277

[ ]

BALLAST TYPE:  
LE

1-2 Lamp Mag. T12  
(Energy Savings)  
1-2 Lamp Standard Electro Magnetic T12 P  
<20THD <10THD  
SO\* HI\*

\*Instant Start Standard

[ ]

OPTIONS:  
Add appropriate  
suffix to catalog  
no. ie: (GLR)



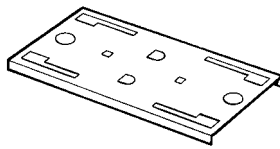
STEM AND CANOPY SET  
ASC6 CSP (6")



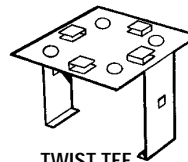
CANOPY SPACER  
AC1 CSP



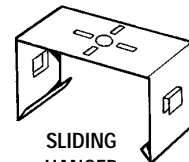
CHAIN HANGING KIT  
AH5 CSP



HEAVY DUTY COUPLER  
NHDC-W CSP



TWIST TEE  
NAH3 CSP



SLIDING HANGER KIT  
NAHW CSP

### Options & Accessories

**Fusing:** Internal fast-blow fusing. Suffix: **GLR**.  
Internal slow-blow fusing. Suffix: **GMF**.

**Fluorescent Emergency Lighting System:** Factory installed emergency power battery pack with charger and inverter. Suffix: **EM**.

**Stem and Canopy Sets:** Suspends fixture 6", 12", 18" or 24" from surface.  
Catalog Number: **ASC6 CSP** (6"), **ASC12 CSP** (12"), **ASC18 CSP** (18"), **ASC24 CSP** (24").

**Canopy Spacer:** Suspends fixture 1-1/2" from surface. Order Catalog Number: **AS1 CSP**

**4' Wire Guard (White):** Specify two for 96" fixtures.  
Catalog Number: **AWG4W CSP**

**Reflector Row Aligners:** Two aligners are included with all 96" fixtures. For continuous row installations, specify two additional bulk-packed aligners per reflector joint. Catalog Number: **KNA**.

**Chain Hanging Kit:** Includes two 5' heavy duty link chains with sturdy "V" hooks for fixture suspension. **AH5 CSP**

**Twist Tee:** For exposed T-bar mounting, 1-7/8" deep channel. **NAH3 CSP**  
**Heavy Duty Coupler:** Catalog Number: **NHDC-W CSP**

### Specifications

**Materials:** Chassis parts are die-formed heavy gauge cold rolled steel, 4-1/8" channel width.

### Specifications (continued)

**Reflector:** Heavy duty die-formed with deep lateral embossments and return edges for additional stability and uniformity and two quick release quarter turn fasteners for attachment to housing.

**Ballast Cover:** Code gauge steel secured with quarter turn latch.

**Finish:** Chassis exterior—phosphate undercoating, baked white polyester enamel.

**Electrical:** Thermally protected class "P" ballast C.B.M. approved, non PCB. If K.O. is within 3" of ballast, use wire suitable for at least 90°.

**Labels:** I.B.E.W./UL and C-UL.

### Job Information

Type:

Lightolier a Genlyte Thomas Company

www.lightolier.com

Technical Information: (978) 657-7600 • Fax (978) 658-0595

631 Airport Road, Fall River, MA 02720 • (508) 679-8131 • Fax (508) 674-4710

We reserve the right to change details of design, materials and finish.

Copyright 2002 Lightolier

Section 7/Folio Q70-50

**LIGHTOLIER®**