

ATD8198 *MADE IN MEXICO* BASIC HEAVY DUTY REEL



BASIC HEAVY DUTY REEL SYSTEM;
Suitable for Oil Hose 1/2" or Grease Hose up to 50 feet

OWNERS MANUAL

RETAIN THIS MANUAL FOR FUTURE REFERENCE TO IMPORTANT WARNINGS AND OPERATING AND MAINTENANCE INSTRUCTIONS.

PROPER USE AND MAINTENANCE OF THIS EQUIPMENT IS THE RESPONSIBILITY OF THE OWNER AND/OR OPERATOR.

DO NOT USE THIS EQUIPMENT UNLESS YOU HAVE CAREFULLY READ AND UNDERSTAND THE INSTRUCTIONS AND WARNINGS IN THIS MANUAL.

! WARNING !

NEVER exceed the stated maximum working pressure of the pump or of the lowest rated component in your system.

NEVER modify any part of this equipment.

NEVER use combustible gas with this equipment.

NEVER attempt repairs while the system is under pressure.

NEVER attempt to disassemble the equipment while the system is under pressure.

ALWAYS tighten fluid connections before using this equipment

ALWAYS read/follow the fluid manufacturer's recommendations regarding fluid compatibility.

ALWAYS read/follow the fluid manufacturer's recommendations regarding the use of protective clothing and equipment.

REGULARLY check all equipment and repair/replace worn or damaged parts immediately.

FAILURE TO HEED THESE WARNINGS INCLUDING OVERPRESSURIZING, ALTERING PARTS, USE OF INCOMPATIBLE FLUIDS, MISUSE, OR USE OF DAMAGED/WORN PARTS MAY RESULT IN EQUIPMENT DAMAGE, PROPERTY DAMAGE, FIRE, EXPLOSION AND/OR SERIOUS PERSONAL INJURY.

SAFETY INSTRUCTIONS

Extreme caution should be used when operating this equipment as it generates very high fluid pressure. Leaks from loose or ruptured components or material from dispensing valve can inject fluid through the skin causing serious bodily injury and possible need for amputation. Always wear protection to prevent material splashing onto skin or into eyes.

IMPORTANT: GET EMERGENCY MEDICAL CARE IMMEDIATELY IF ANY FLUID APPEARS TO PENETRATE THE SKIN! INFORM PHYSICIAN OF EXACTLY WHAT WAS INJECTED. PLEASE DO NOT TREAT THIS INJURY AS A SIMPLE CUT.

HOSE REEL DIMENSIONS

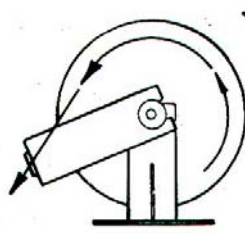
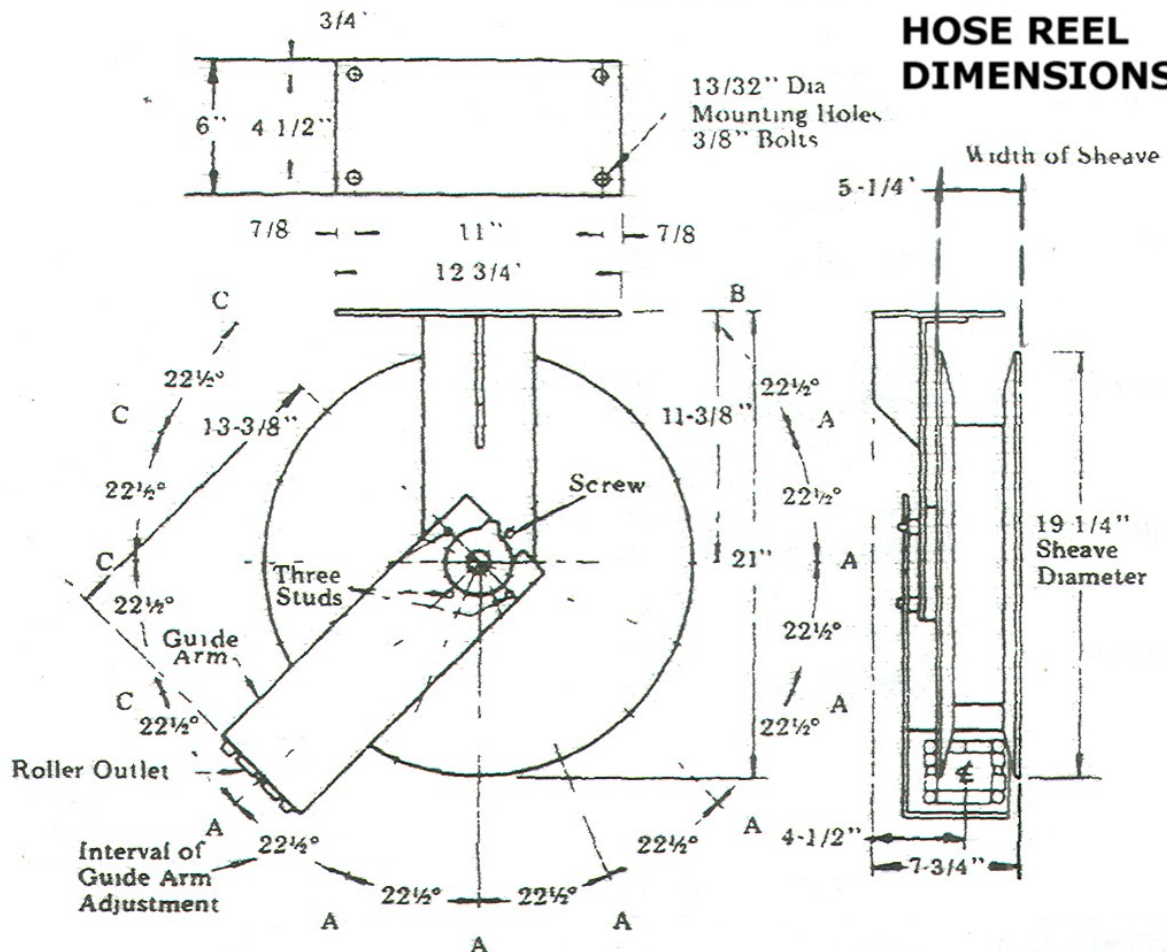


FIG 2
LUBE TRUCK
INSTALLATION
CONTRACTOR

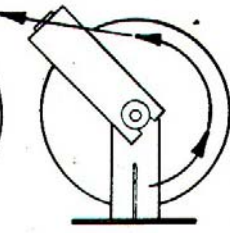


FIG 3
FLOOR
INSTALLATION

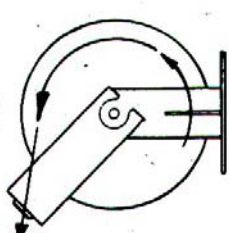


FIG 4
WALL, POST
OR ABOVE BENCH
INSTALLATION

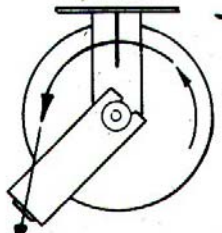


FIG 5
CEILING
INSTALLATION

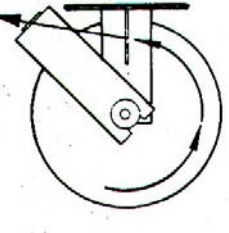
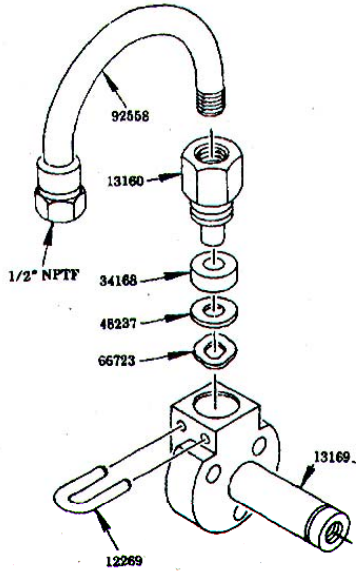


FIG 6
UNDER BENCH
INSTALLATION

MODEL	POWER SPRING	MAX. HOSE CAPACITY
ATD8198	57082	50' of Type 73 Hose

SECTION YY



CAUTION

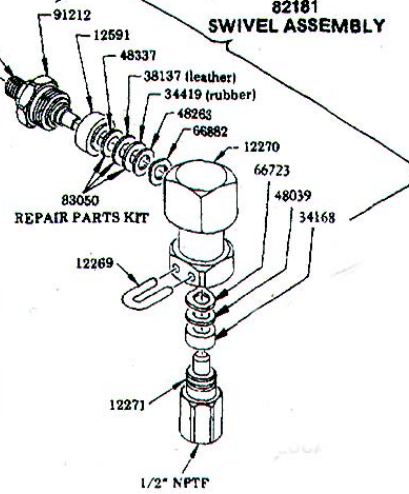
RELIEVE ALL POWER SPRING TENSION BEFORE REMOVING SPRING HOUSING COVER BY RELEASING LATCH AND MANUALLY RESTRAINING UNWIND SPEED OF REEL. SHEAVE ASSEMBLIES SHOULD BE SEPARATED WHEN IN A HORIZONTAL POSITION WITH 45985 DOWN ON A FLAT SURFACE.

NOTE: The power spring is restrained by a steel retainer band. For added safety, the power spring should be wired securely to the retainer band in at least three places before removal from the spring housing.

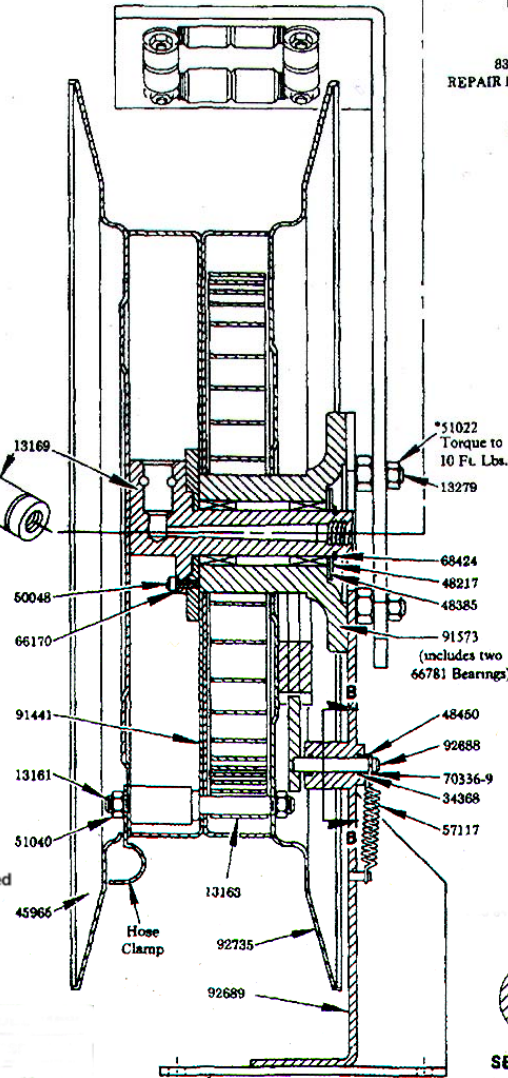
MODEL ATD8198	
HOSE CLAMP	HOSE TYPE
45816	73
45817	72A & 75
45818	78

Use pipe compound on threads before installing swivel to hose reel.

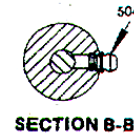
82181 SWIVEL ASSEMBLY



SECTION ZZ



SECTION A-A

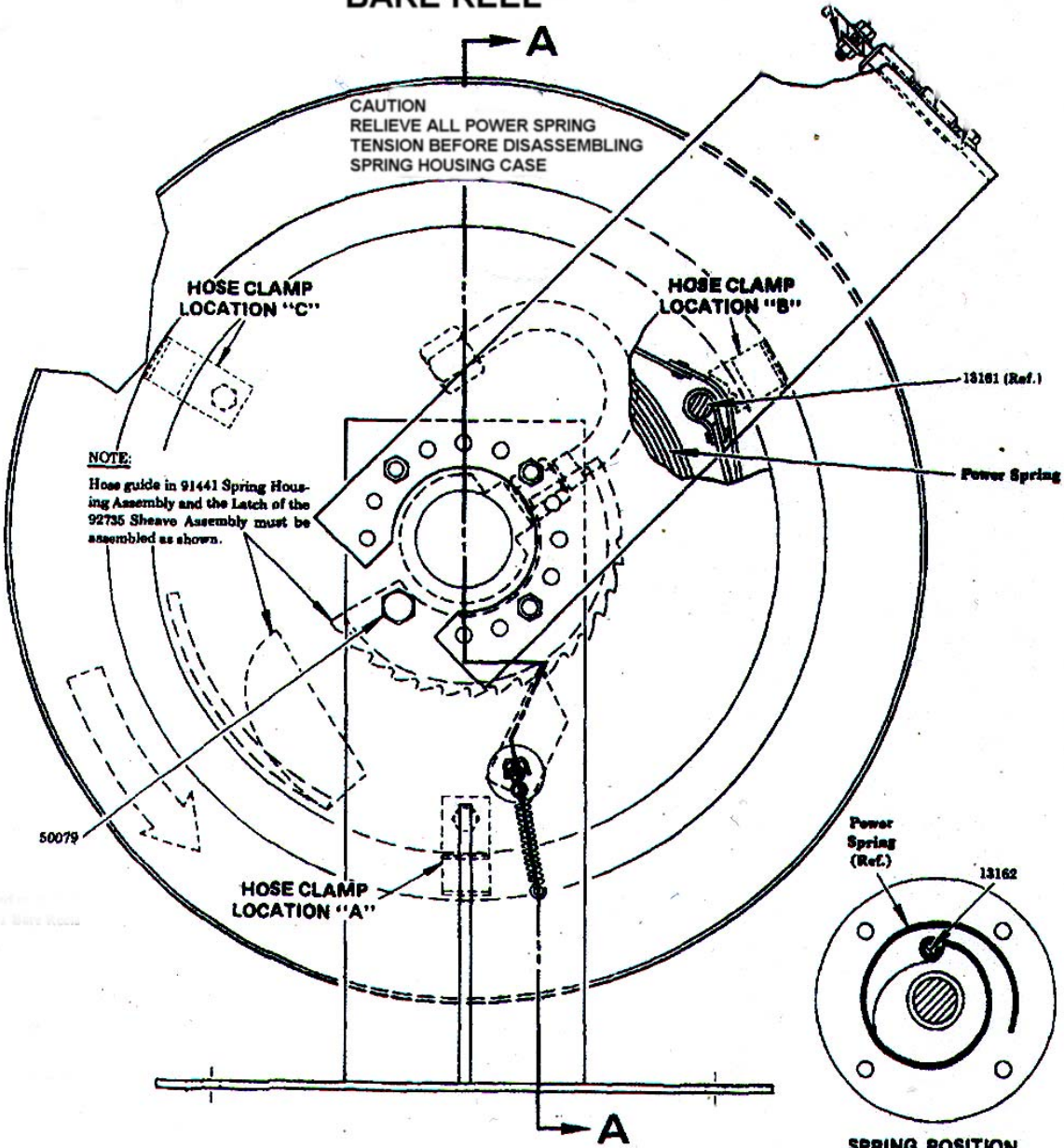


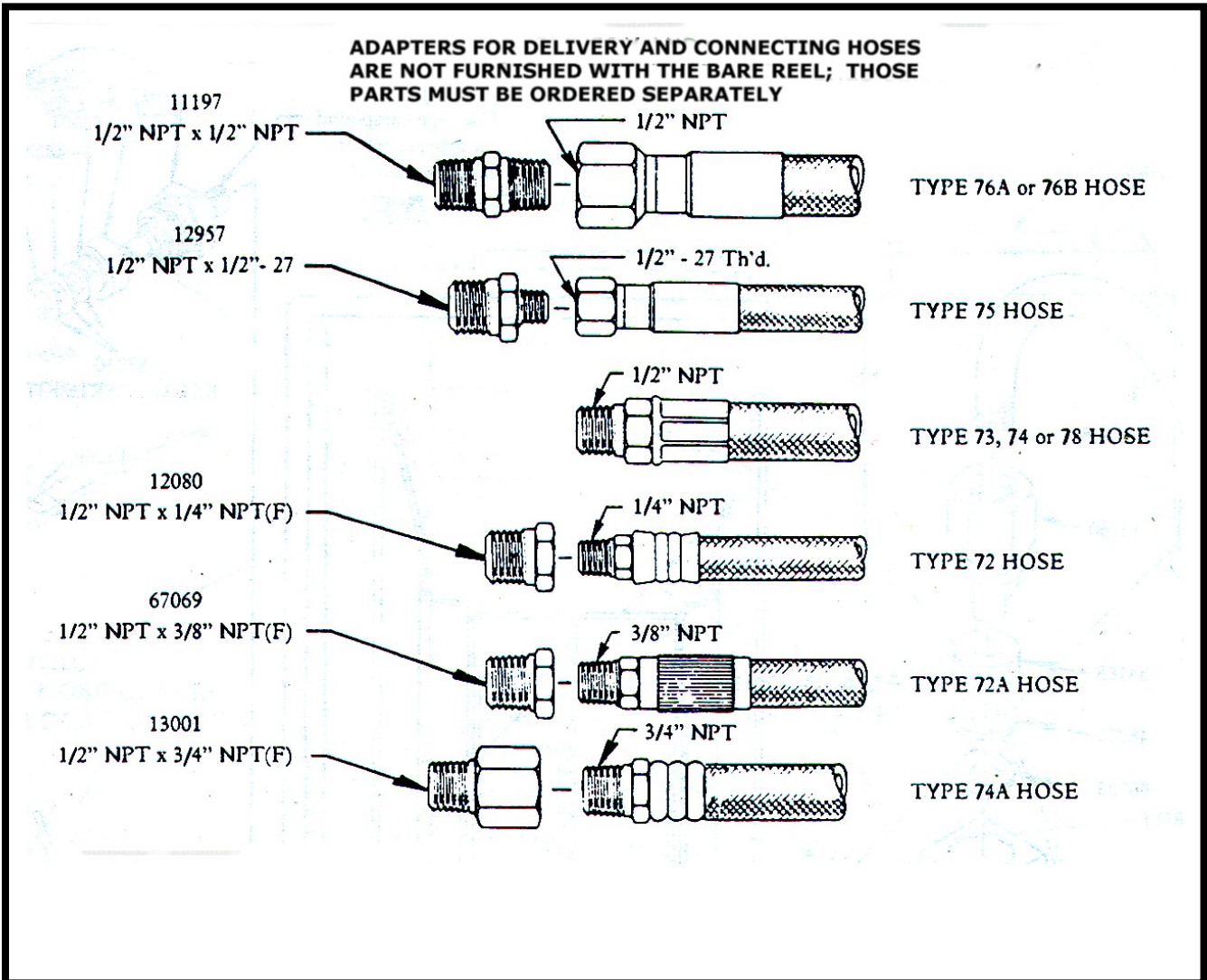
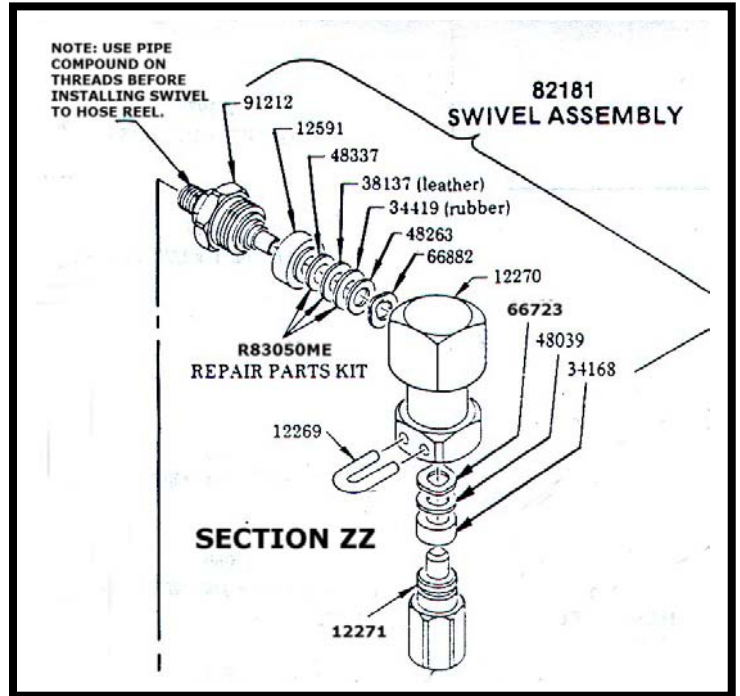
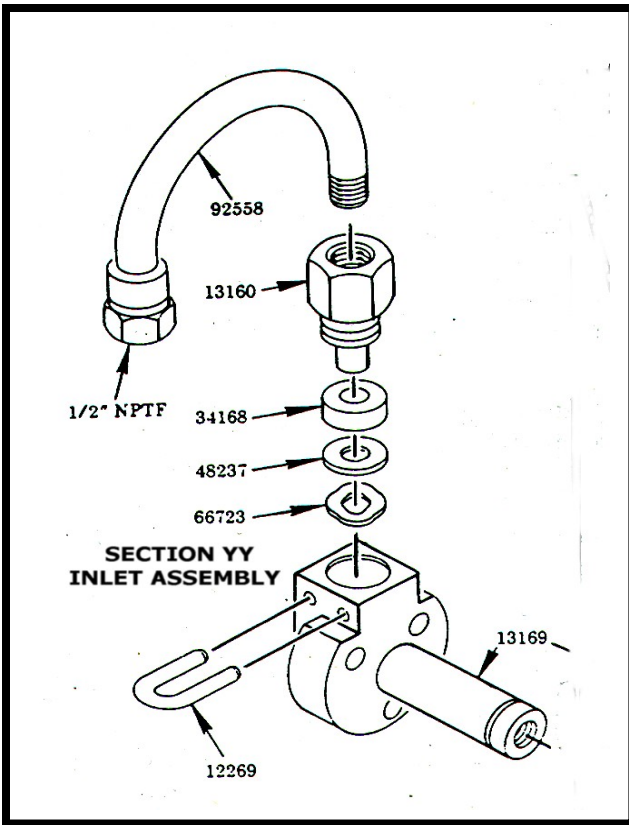
SECTION B-B

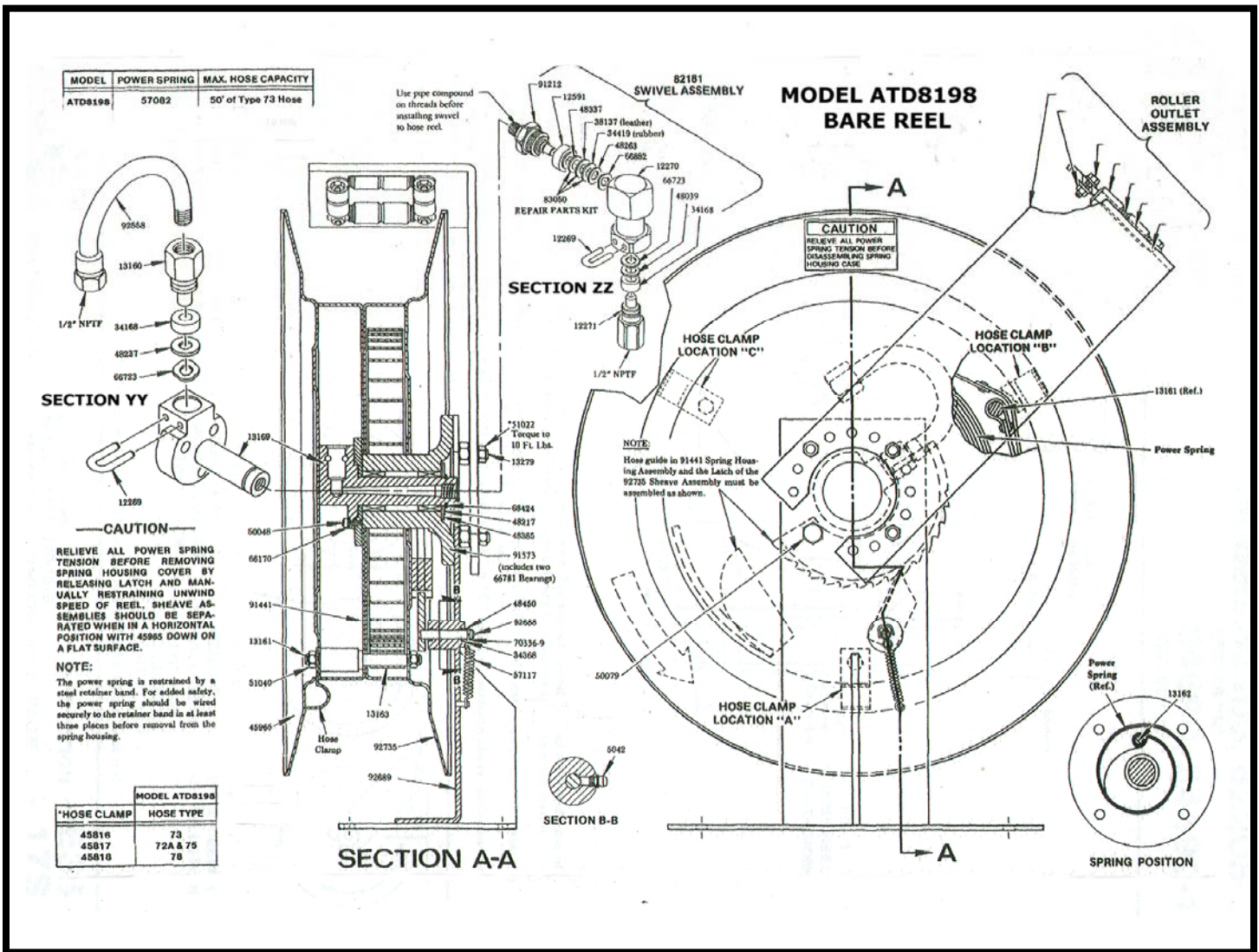
*51022 Torque to 10 Ft. Lbs.

(includes two 66781 Bearings)

MODEL ATD8198 BARE REEL







Warning: Use Extreme Caution when working on the Reel Spring. Consider the spring very dangerous.

Caution Note: Relieve all power spring tension before removing spring house cover by releasing latch and manually restraining unwind speed of reel. Sheave assemblies should be separated when in a horizontal position with 45965 down on a flat surface.

Caution Note: The power spring is restrained by a steel retainer band. For added safety the power spring should be wire secured to the retainer band in at least three (3) places before removal from the spring housing.

Note: Use Pipe Compound on Threads before installing swivel on Hose Reel.

ATD8198 SERVICE PARTS LISTING AND DESCRIPTION

PART	QTY	DESCRIPTION	PART	QTY	DESCRIPTION
5042	1	LUBE FITTING	48385	4	SHIM WASHER
12269	2	KEEPER	48450	1	WASHER
12270	1	SWIVEL BODY	50048	3	SCREW
12271	1	ADAPTER	50079	1	SCREW
12591	1	RETAINER	50757	4	BOLT
13160	1	ADAPTER(12271ME)	51022	3	NUT
13161	3	STUD	51040	6	NUT
13162	1	SPRING PIN	51412	4	NUT
13163	3	SPACER	57117	1	SPRING
13169	1	SHAFT	66170	3	LOCKWASHER
13272	8	ROLLER	66723	2	SPRING WASHER
13273	2	PIN	66781	2	BEARING
13274	2	PIN	66882	1	SPRING WASHER
13275	2	SPACER	68424	1	RETAINING RING
13279	3	STUD	70336-9	1	COTTER PIN
34168	2	PACKING	82181	1	SWIVEL ASSEMBLY
34368	2	O-RING	82860	1	ROLLER OUTLET ASSEMBLY
34419	1	PACKING (RUBBER)THICK	91212	1	SWIVEL STUD
38137	1	PACKING (LEATHER)REPLACED BY 34419ME THICK	91441	1	SPRING HOUSING
45965	1	SHEAVE HALF	91573	1	ARBOR
48039	1	WASHER	92558	1	TUBE & ADAPTER
48217	1	WASHER	92668	1	PAWL
48237	1	WASHER(35039ME)	92689	1	SUPPORT ASSEMBLY
48263	1	WASHER	92735	1	SHEAVE
48337	1	WASHER	360209	1	ROLLER SUPPORT ARM

Repair Kit for Soft Parts: 83050ME; consisting of: 48337ME(Metal Washer), 34419ME(1)(Rubber Packing) or(34419ME-THIN 2PCS RUBBER PACKING); 48263ME(Thin Metal Washer); 66882ME Wave Spring Washer; Note: Item 38137ME (Leather Washer) has been replaced by 34419ME (Rubber Washer)

REF: Threading Hose onto Reels: Please note pictorial below:

