

Compact Disc Compact Player

Operating Instructions

About area code

The area code of the player you purchased is shown on upper left of the bar code label on the package. For accessories supplied with your player, check the area code of your model and refer to "Supplied accessories" toward the end of this manual.



D-E554

Sony Corporation ©1998

Welcome!

Thank you for purchasing the Sony Compact Disc Compact Player. Before operating your player, please read this manual and retain it for future reference.

WARNING

To prevent fire or shock hazard, do not expose the unit to rain or moisture.

To avoid electrical shock, do not open the cabinet. Refer servicing to qualified personnel only.

CAUTION

The use of optical instruments with this product will increase eye hazard.

For the customers not in Poland

The mark on the unit is valid only for products marketed in Poland.

For the customers not in Europe

The CE mark on the unit is valid only for products marketed in the European Union.

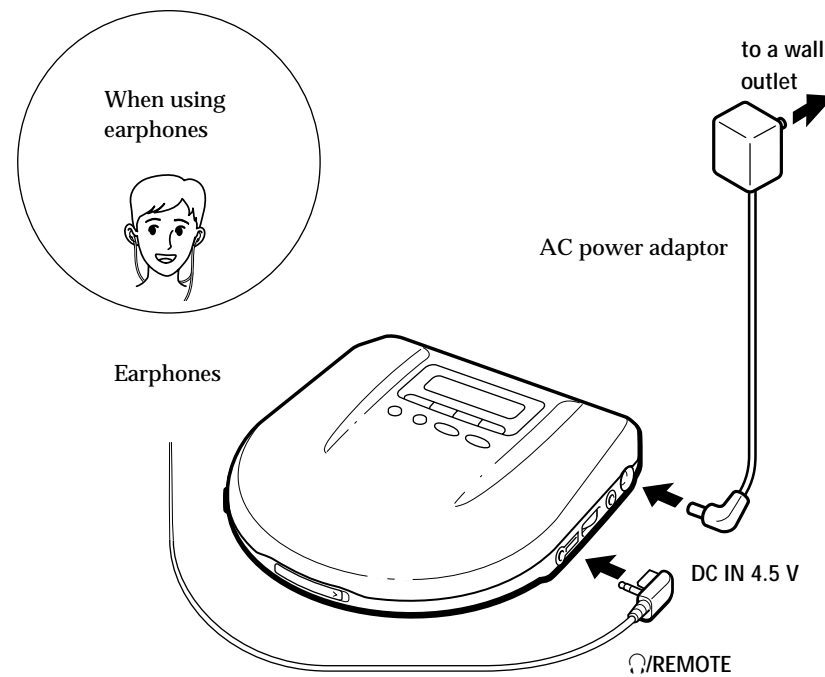
For the customers not in Russia

The mark on the unit and package is valid only for products marketed in Russia.

Playing a CD right away!

If you want to play a CD right now, choose to use your player on house current. Other choices are the following three: rechargeable battery, dry batteries (see "Power Sources" on the reverse side) and car battery.

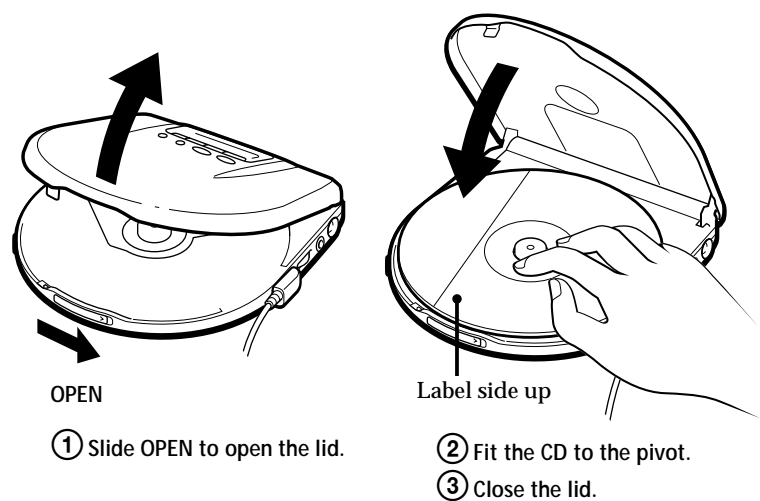
1 Connect



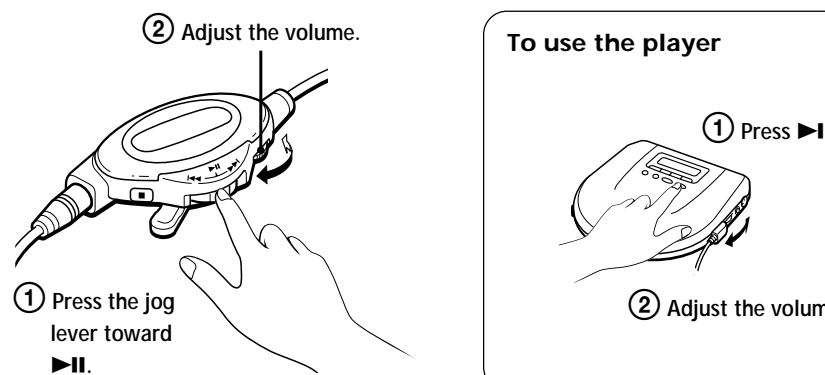
For models supplied with the AC plug adaptor
If the AC power adaptor does not fit the wall outlet, use the AC plug adaptor.

For models supplied with the remote control
• Connect the plug of the earphones to the remote control.
• Connect the earphones to the remote control firmly. A loose connection may cause noise during playback.

2 Place a CD



3 Play



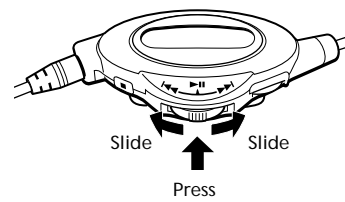
1 Press the jog lever toward .

To use the player

1 Press .

2 Adjust the volume.

To use the remote control
The lever marked with is the jog lever. When you press or slide the lever, operation starts.



To	Do this
Pause	Press the jog lever toward .
Resume play after pause	Press the jog lever toward .
Find the beginning of the current track (AMS*)	Slide the jog lever toward once.**
Find the beginning of previous tracks (AMS)	Slide the jog lever toward repeatedly.**
Find the beginning of the next track (AMS)	Slide the jog lever toward once.**
Find the beginning of succeeding tracks (AMS)	Slide the jog lever toward repeatedly.**
Go forward quickly	Slide and hold the jog lever toward .**
Go backwards quickly	Slide and hold the jog lever toward .**

*AMS = Automatic Music Sensor
**These operations are possible during both play and pause.

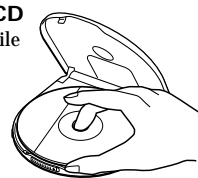
If you press RPT/ENT (REPEAT/ENTER on the player) to display , you can locate the tracks continuously in the following order:

- When using : next track → next track last track → first track → second track
- When using : previous track → previous track first track → last track

You can do the operations shown in the above table using the buttons with the same marks on the player.

To remove the CD

Remove the CD while pressing the pivot.



Notes on controlling the volume with the remote control

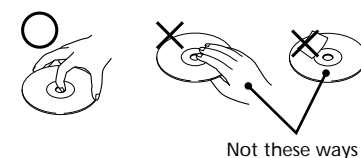
Set the VOL. (volume) control on the remote control to the maximum. Then adjust the volume on the player to the level that you want to be the maximum volume of the remote control.

Notes on display

- When you press (when RESUME is set to OFF), the total number of tracks in the CD and the total playing time appear for about 2 seconds.
- During play, the track number and the elapsed playing time of the current track appear.
- During pause, the elapsed playing time flashes in the display.
- Between tracks, the time to the beginning of the next track will appear with the "-" indication.

Notes on handling CDs

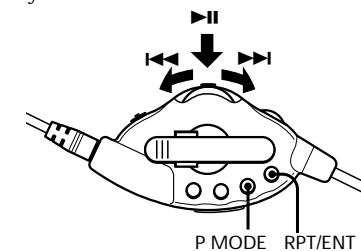
- To keep the CD clean, handle it by its edge. Do not touch the surface.
- Do not stick paper or tape onto the CD.
- Do not expose the CD to direct sunlight or heat sources such as hot air ducts. Do not leave the CD in a car parked under direct sunlight.



Other Operations

Playing tracks repeatedly (Repeat Play)

You can play tracks repeatedly in normal, INTRO PGM, shuffle or RMS (Random Music Sensor) play modes. Repeat all the tracks or only one track.



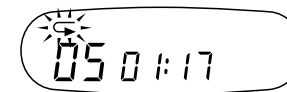
To repeat all the tracks
Press RPT/ENT (REPEAT/ENTER on the player) during play. The indication appears.



To cancel repeat play, press RPT/ENT again.

To repeat a single track

1 Press RPT/ENT while the track you want to repeat is playing. The indication appears.



2 Press P (play) MODE (PLAY MODE on the player) repeatedly until "1" appears.

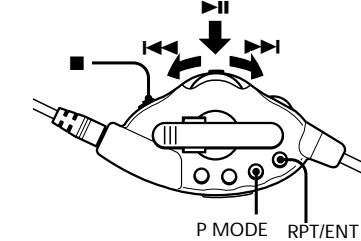


To repeat another track, slide the jog lever toward or .

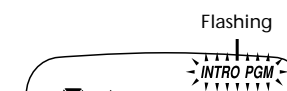
To cancel repeat play, press RPT/ENT again.

Playing only the tracks you want (INTRO PGM Play)

You can choose and play your favorite tracks by scanning through the beginning of each track in a CD.



1 During play, press P MODE repeatedly until "INTRO PGM" flashes.



2 Press the jog lever toward to start scanning. The player plays about the first 15 seconds of each track and "INTRO PGM" flashes faster.

3 Press RPT/ENT while the track you want is playing. To skip the track, slide the jog lever toward or just wait for the next track.

After you have gone through the CD, "INTRO PGM" stops flashing and the tracks you have chosen play automatically.

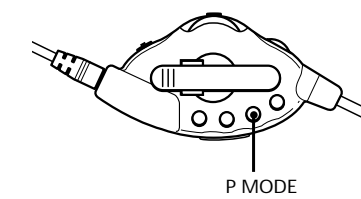
To finish programming before going through the whole CD, press the jog lever toward . The selected tracks will be played.

If you press , the program will be erased. To prevent accidental erasure, set the RESUME switch at the rear of the player to ON.

To cancel INTRO PGM play, press P MODE repeatedly until the play mode indication disappears from the display.

Playing tracks in random order (Shuffle Play)

You can play the tracks in a CD in random order.



During play, press P MODE repeatedly until "SHUF" appears. The tracks play in random order.



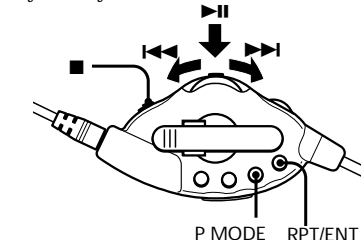
To cancel shuffle play, press P MODE repeatedly until the play mode indication disappears from the display.

Note

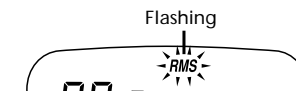
- During shuffle play, you cannot return to previous tracks by sliding the jog lever toward .

Playing tracks in the order you want (RMS play)

You can program up to 22 tracks to play in any order you choose.

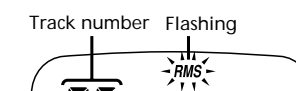


1 During play, press P MODE repeatedly until "RMS" flashes.



*RMS = Random Music Sensor

2 Slide the jog lever toward or to choose a track. The track number and the playing order appear.



3 Press RPT/ENT to program the track.

4 Repeat steps 2 and 3 to program the remaining tracks.

5 Press the jog lever toward . "RMS" stops flashing and the tracks you have chosen play in the order you specified.

If you press , the program will be erased. To prevent accidental erasure, set the RESUME switch at the rear of the player to ON.

To check the program

During programming:
Press RPT/ENT before step 5.
During RMS play:
Press P MODE repeatedly until "RMS" flashes, then press RPT/ENT. Each time you press RPT/ENT, the track number and the playing order appear in the order you specified.

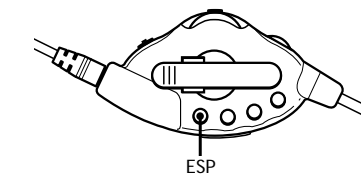
Note

- If you program another track after the 22nd track, the first track programmed is cleared and the new track is programmed instead.

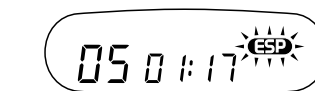
Using other functions

To minimize skipping (ESP²)

The ESP (Electronic Shock Protection) function minimize skipping by using a buffer memory that stores music data and plays it back in the event of a shock. The new ESP² (ESP Squared) system uses a new DSP (Digital Signal Processor) which can read and store music data more efficiently, providing a level of continuous skip protection not found in traditional buffer memory units. This decreases the frequency of sound skipping and the need to utilize the buffer memory. Use this function when listening in a car or while walking.* Although ESP² provides excellent protection against skipping, it will not prevent skipping while jogging or running.



Press ESP. The ESP indication appears.



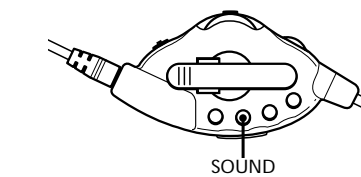
To release the ESP function, press ESP again.

Notes

- Playing may stop when the player gets a strong shock even with the ESP function on.
- You may hear a noise or sound skip when:
 - listening to a dirty or scratched CD.
 - listening to an audio test CD or.
 - the player receives continuous shock.
- Sound may drop for a while if you press ESP during play.
- When you use an optical digital connecting cord, the ESP function will be disabled.

To enjoy more powerful bass sound (Sound function)

You can enjoy a powerful bass-boosted sound.



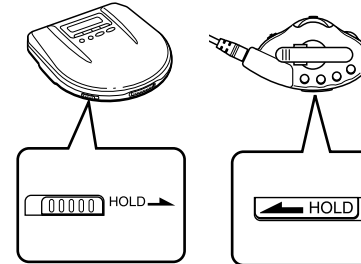
Press SOUND to select "MB (Mega Bass)" or "GRV (Groove)." "GRV" is more effective.

Note

- If the sound is distorted when emphasizing bass, turn down the volume.

To lock the buttons

You can lock your player against any accidental operations. You can still operate the player with the remote control.



Slide HOLD in the direction of the arrow. When you press any button, "Hold" appears in the display and you cannot operate the player.

To unlock, slide HOLD back.

Continue to the reverse side →

