

DriveRack® 220i

System Processor w/ AFS™ Advanced Feedback Suppression

Front



Rear



Analog Inputs:

Number of Inputs: (2) Switchable line or mic inputs
 Connectors: Female XLR line inputs and Euroblock
 Type: Electronically balanced/RF filtered
 Impedance: > 50k Ω
 Max input line level: +20dBu
 CMRR: > 40dB, typically >55db @ 1kHz
 Mic Pre gain: 30 to 60dB
 Mic EIN: < 110dB, 22Hz-22kHz, 150Ω
 Mic Phantom Power: 15V

Analog Outputs:

Number of Outputs: (2)
 Connectors: Male XLR and Euroblock
 Type: Electronically balanced, RF filtered
 Impedance: 120 Ω balanced, 60Ω unbalanced
 Max Output Level: +20dBu

A/D Performance:

Type: dbx Type IV™ conversion system
 Dynamic Range line: >113 dB A-weighted, >110 dB unweighted
 Type IV dynamic range: >119 dB, A-weighted, 22kHz BW
 >117 dB, unweighted, 22kHz BW
 Sample Rate: 48kHz

D/A Performance:

Dynamic Range: 112 dB A-weighted, 109dB unweighted

System Performance:

Dynamic Range: >110 dB A-weighted, >107dB unweighted,
 THD+N: 0.003% typical at +4dBu, 1kHz, 0dB gain
 Frequency Response: 20Hz – 20kHz, +/- 0.5dB
 Interchannel Crosstalk: >110dB, 120dB typical
 Crosstalk input to output: >80dB
 Operating voltage: 100 VAC, 50/60Hz, 120 VAC, 60Hz, 230VAC 50/60Hz
 Size: 19" Wide, 1.75"High, 7.7" Deep

Safety Agency Approvals:

UL 6500, IEC 60065, EN 55013, E 60065

The Contractor's Toolbox



 A Harman International Company

dbx®

PROFESSIONAL PRODUCTS

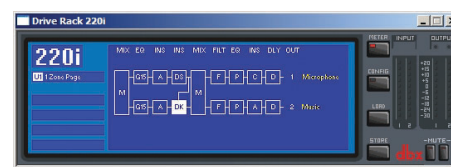
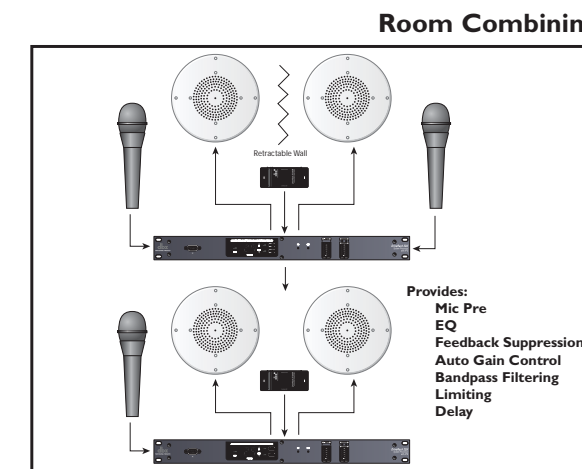
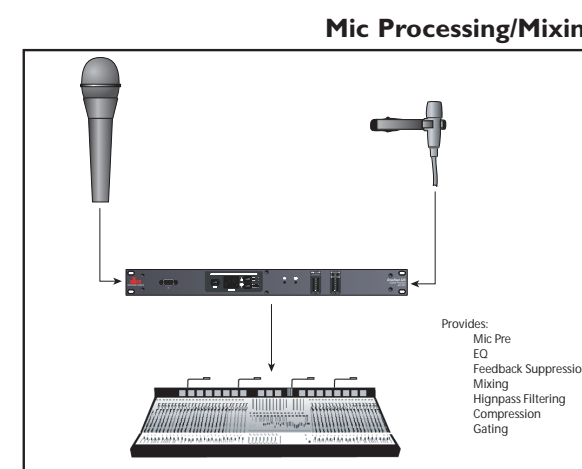
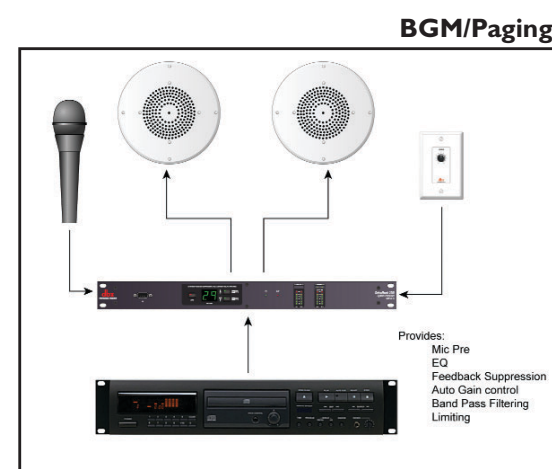
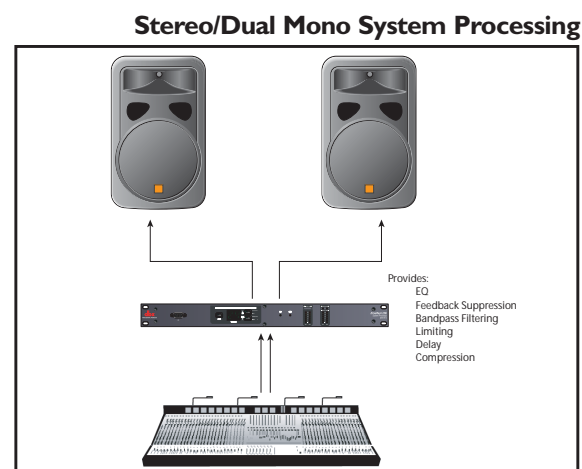
The Professional's Choice In Signal Processing™

www.dbxpro.com

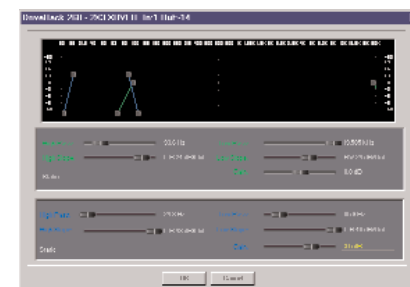
Visionary Design

Designed to provide all the necessary tools for contractors, the DriveRack® 220i is truly a one stop solution. With a full complement of processing features and Mic/Line inputs with phantom power, the 220i can provide both system and microphone processing. Featuring the new, patent-pending Advanced Feedback Suppression (AFS™) algorithm, Equalization, Dynamics Processing, Delay, Matrix Mixing, and Bandpass Filters, the DriveRack® 220i is your entire audio toolbox in a single rack space. The intuitive DriveWare GUI is the primary interface for controlling the configuration and parameters of the processing modules and utilities. Modules can be accessed, edited and saved as part of programs, which can then be recalled from either the front panel, the GUI, or wall mounted dbx Zone Controllers. Zone Controllers can also be used to provide programmable end-user control like volume adjustment and muting. Besides loading programs, the front panel can also be used to clear Feedback Suppression Filters or can be locked out to further prove that the days of the security panel are over. The DriveRack® 220i is the Contractors Toolbox. For more information please visit www.driverrack.com or www.dbxpro.com.

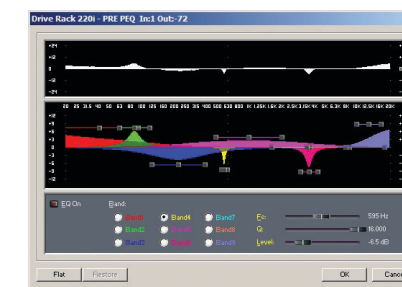
Example Applications



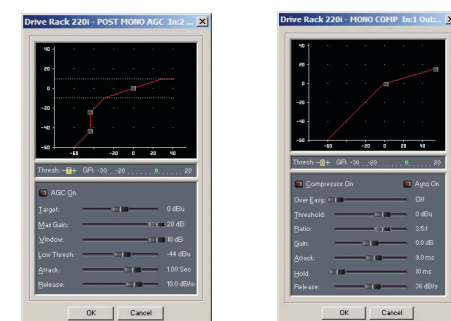
All parameters, functions, and utilities can be accessed from the DriveWare PC GUI. The DriveRack 220i also allows limited control from the unit front panel and from wall mounted dbx Zone Controllers. Zone Controllers can also be used to provide programmable end-user control like volume adjustment and muting. Besides loading programs, the front panel can also be used to clear Feedback Suppression Filters or can be locked out to further prove that the days of the security panel are over.



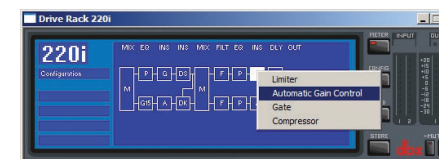
Bandpass Filters are provided on both output channels for limiting bandwidth and creating Crossovers.



The DriveRack 220i provides both input and output EQ. Input EQ is switchable between a 28-band or 15-band Graphic EQ, or a 9-band Parametric EQ; the output EQ is a 4-band Parametric EQ.



For Dynamics control, the 220i offers a classic dbx Compressor, Gate or Auto Gain Control in the input section. The outputs also feature a Dynamic insert that includes a Limiter, Compressor, Gate, and Auto Gain Control.



There are two insert processing positions in the input signal path that allow the following DSP modules: Advanced Feedback Suppression, Auto Gain Control, Compressor, Gate, Ducker, Sub-Harmonic Synthesis, Notch Filter, De-Esser or Wire if no additional processing is desired. The outputs also feature a dynamics insert module with Limiter, Auto Gain Control, Compressor, and Gate available.



The DriveRack 220i offers up to 1.3 Seconds of Delay, with up to 650 mSec per output in 20 microsecond steps. Outputs also offer both Polarity and Phase control.

Features

- **Advanced Feedback Suppression (AFS™)**
- **Graphic and Parametric EQ**
- **Compressor**
- **Limiter**
- **Auto Gain Control**
- **Noise Gate**
- **De-Esser**
- **Ducker**
- **Bandpass Filters**
- **2x2 Matrix Mixer**
- **1.3 Seconds of Delay**
- **RS-232 PC GUI control**
- **Mic/Line Inputs**
- **Wall Panel Control**
- **Security Lockout**
- **UL, IEC, and CSA Approvals**