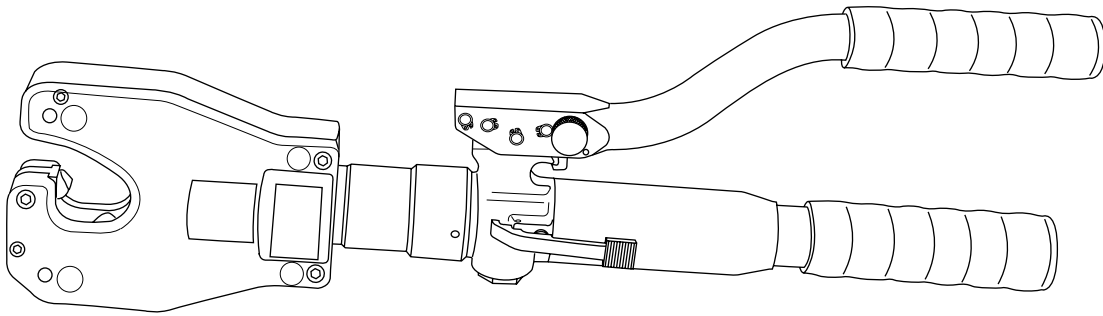


INSTRUCTION MANUAL



HK06AT and HK06ATC Hydraulic Crimping Tools



Read and understand all of the instructions and safety information in this manual before operating or servicing this tool.

Table of Contents

Description	2
Safety	2
Purpose of this Manual	2
Important Safety Information	3–4
Identification	5
Specifications	5
Operation	6
Periodic Pressure Relief Valve Check	7
Illustrations	8–10
Parts List	11–12

Description

The HK06AT and HK06ATC Hydraulic Crimping Tools are hand-held, self-contained, dieless crimping tools intended to crimp aluminum and copper connectors onto electrical cable.

The HK06ATC has a rubber-covered crimping head.

Safety

Safety is essential in the use and maintenance of Greenlee tools and equipment. This instruction manual and any markings on the tool provide information for avoiding hazards and unsafe practices related to the use of this tool. Observe all of the safety information provided.

Purpose of this Manual

This instruction manual is intended to familiarize all personnel with the safe operation of the Greenlee HK06AT and HK06ATC.

Keep this manual available to all personnel.


Replacement manuals are available upon request at no charge.

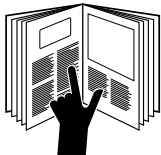
All specifications are nominal and may change as design improvements occur. Greenlee Textron shall not be liable for damages resulting from misapplication or misuse of its products.


Tellus is a registered trademark of Shell Oil Company.

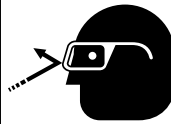
KEEP THIS MANUAL


IMPORTANT SAFETY INFORMATION

	<h3 style="margin: 0;">SAFETY ALERT SYMBOL</h3>
<p>This symbol is used to call your attention to hazards or unsafe practices which could result in an injury or property damage. The signal word, defined below, indicates the severity of the hazard. The message after the signal word provides information for preventing or avoiding the hazard.</p>	
<h3 style="margin: 0;">⚠ DANGER</h3>	
<p>Immediate hazards which, if not avoided, WILL result in severe injury or death.</p>	
<h3 style="margin: 0;">⚠ WARNING</h3>	
<p>Hazards which, if not avoided, COULD result in severe injury or death.</p>	
<h3 style="margin: 0;">⚠ CAUTION</h3>	
<p>Hazards or unsafe practices which, if not avoided, MAY result in injury or property damage.</p>	

	<h3 style="margin: 0;">⚠ WARNING</h3>
<p>Read and understand all of the instructions and safety information in this manual before operating or servicing this tool.</p>	
<p>Failure to observe this warning can result in severe injury or death.</p>	

	<h3 style="margin: 0;">⚠ WARNING</h3>
<p>Electric shock hazard: This tool is not insulated. When using this unit on or near energized electrical lines, use proper personal protective equipment.</p>	
<p>Failure to observe this warning can result in severe injury or death.</p>	

	<h3 style="margin: 0;">⚠ WARNING</h3>
<p>Wear eye protection when operating this tool.</p>	
<p>Failure to wear eye protection can result in serious eye injury from flying debris or hydraulic oil.</p>	

	<h3 style="margin: 0;">⚠ WARNING</h3>
<p>Skin injection hazard: Oil under pressure easily punctures skin causing serious injury, gangrene, or death. If you are injured by escaping oil, seek medical attention immediately.</p>	
<ul style="list-style-type: none"> • Do not use hands to check for leaks. • Depressurize the hydraulic system before servicing. 	

IMPORTANT SAFETY INFORMATION

⚠ WARNING

An incomplete crimp can cause a fire.

- Use proper connector and cable combinations. Improper combinations can result in an incomplete crimp.
- The handle load will drop suddenly to indicate a completed crimp. If the handle load does not drop suddenly, the crimp is not complete.

Failure to observe these warnings can result in severe injury or death.

⚠ CAUTION

- This tool is intended for two-handed operation. Maintain a firm grip on both handles during operation. Using this tool in any other manner can result in injury or property damage.
- Do not operate the tool without a connector in place. Damage to the ram or crimping tool head can result.

Failure to observe these precautions can result in injury and property damage.

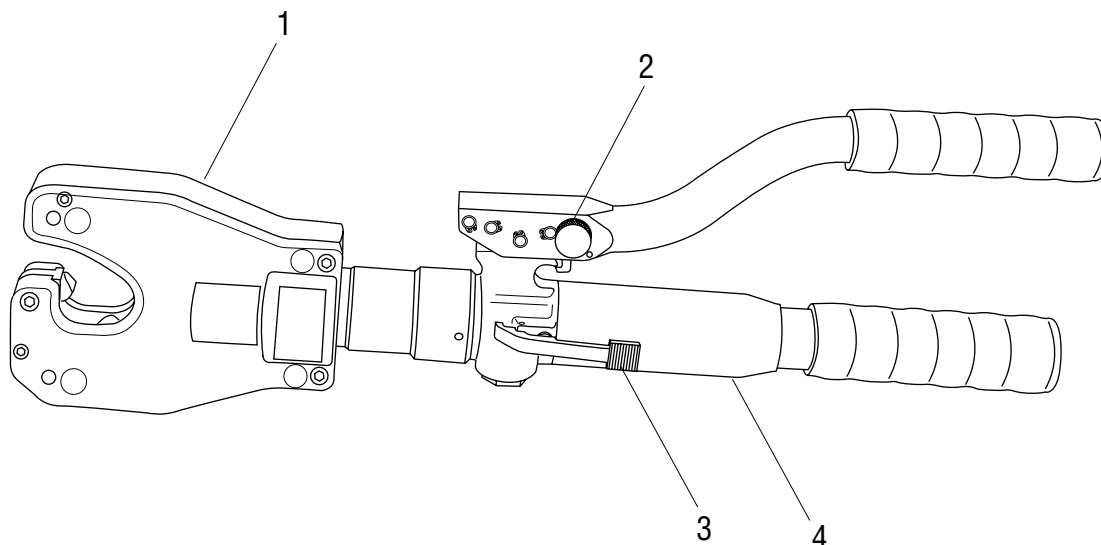
⚠ WARNING

Inspect tool before use. Replace any worn or damaged parts. A damaged or improperly assembled tool can break and strike nearby personnel.

Failure to observe this warning can result in severe injury or death.

Note: Keep decals clean and legible. Replace decals when necessary.

Identification



HK06AT

- | | |
|------------------|------------------|
| 1. Crimping Head | 3. Release Lever |
| 2. Handle Lock | 4. Pump Body |

Specifications

Crimping Tool


Length	552 mm (21.75")
Width	191 mm (7.5")
Height	63.5 mm (2.5")
Mass/Weight	4.5 kg (9.9 lb)
Hydraulic Oil	150 ml (0.3 pint) of Shell Tellus® T 15

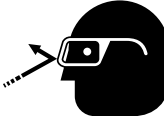
Crimping Capacities


Crimping Range

Copper	#8 AWG to 500 Kcmil
Aluminum	#8 AWG to 400 Kcmil
Crimping Force	55 kN (6.2 tons)

Operation

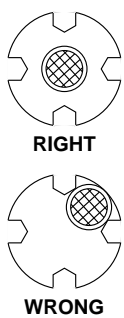
	⚠ WARNING
	<p>Electric shock hazard: This tool is not insulated. When using this tool on or near energized electrical lines, use proper personal protective equipment. Failure to observe this warning can result in severe injury or death.</p>

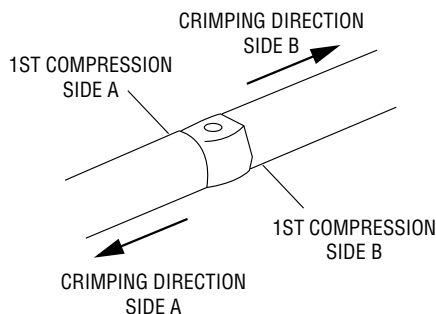
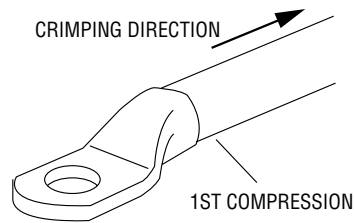
	⚠ WARNING
	<p>Wear eye protection when operating this tool. Failure to wear eye protection can result in serious eye injury from flying debris or hydraulic oil.</p>

	⚠ WARNING
	<p>Skin injection hazard: Oil under pressure easily punctures skin causing serious injury, gangrene, or death. If you are injured by escaping oil, seek medical attention immediately.</p> <ul style="list-style-type: none"> • Do not use hands to check for leaks. • Depressurize the hydraulic system before servicing.

⚠ WARNING
<p>An incomplete crimp can cause a fire.</p> <ul style="list-style-type: none"> • Use proper connector and cable combinations. Improper combinations can result in an incomplete crimp. • The handle load will drop suddenly to indicate a completed crimp. If the handle load does not drop suddenly, the crimp is not complete. <p>Failure to observe these warnings can result in severe injury or death.</p>

1. Follow the lug manufacturer's instructions for appropriate cable strip length and surface preparation.
2. Insert cable fully into connector. Center the connector between the nibs.

	⚠ CAUTION
	<p>Small connectors may become wedged between the nibs of the tool. Center the connector between the four nibs before crimping. Failure to observe this precaution can cause property damage.</p>



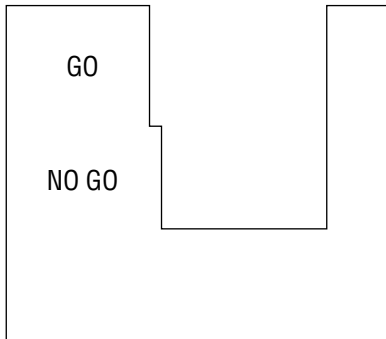
3. Using the sequence illustrated here, pump the handles to advance the nibs. Continue to pump until the pressure relief valve activates.
Note: Pressure relief occurs at approximately 55 kN (6.2 tons) and is indicated by an audible "pop".
4. After achieving pressure relief, the ram automatically returns to the start position and the nibs retract.
5. Complete the number of crimps specified by the connector manufacturer.

Periodic Pressure Relief Valve Check

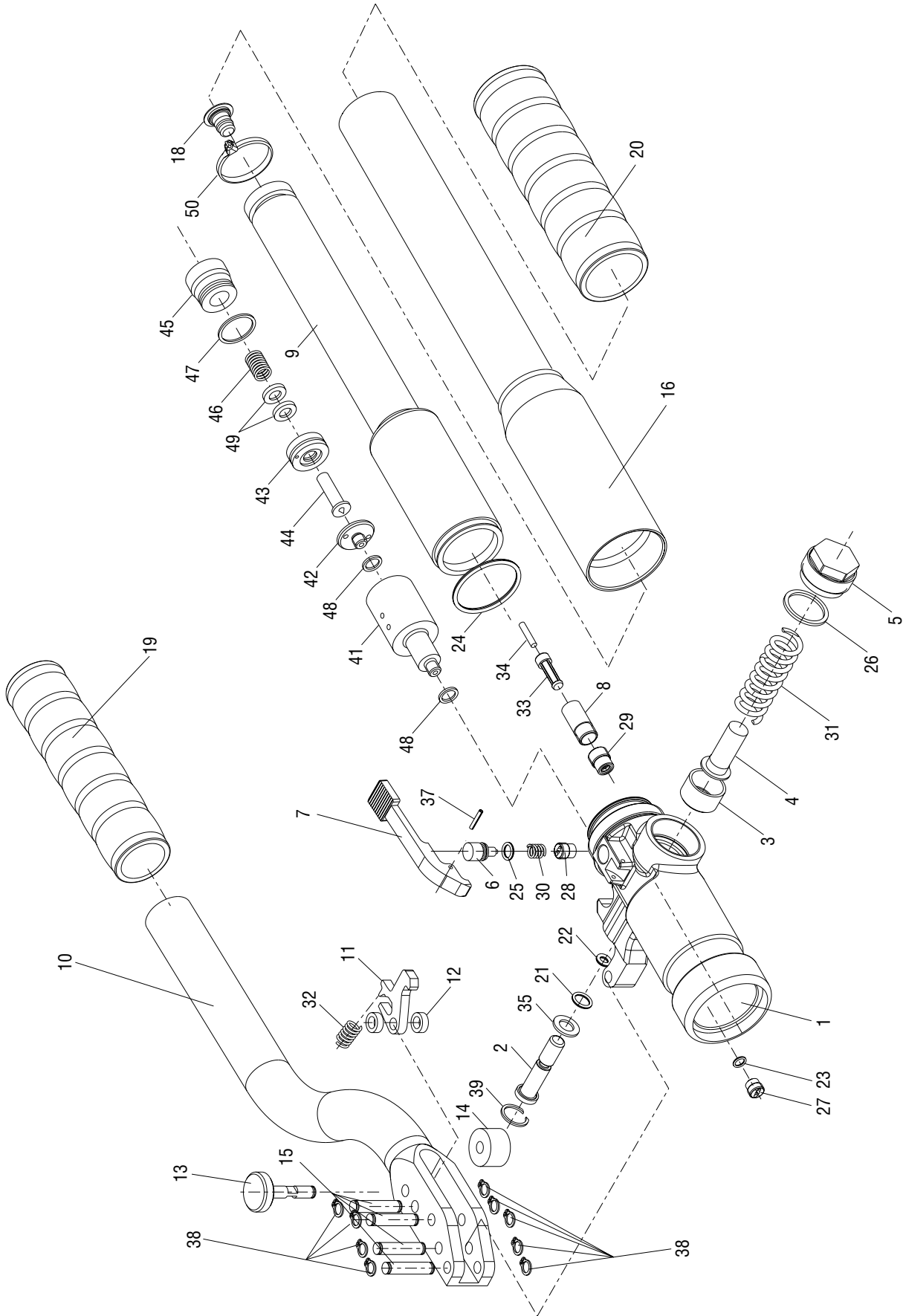
Test the crimping tool periodically to ensure that the pressure relief valve activates at the proper pressure.

Testing the Crimping Tool

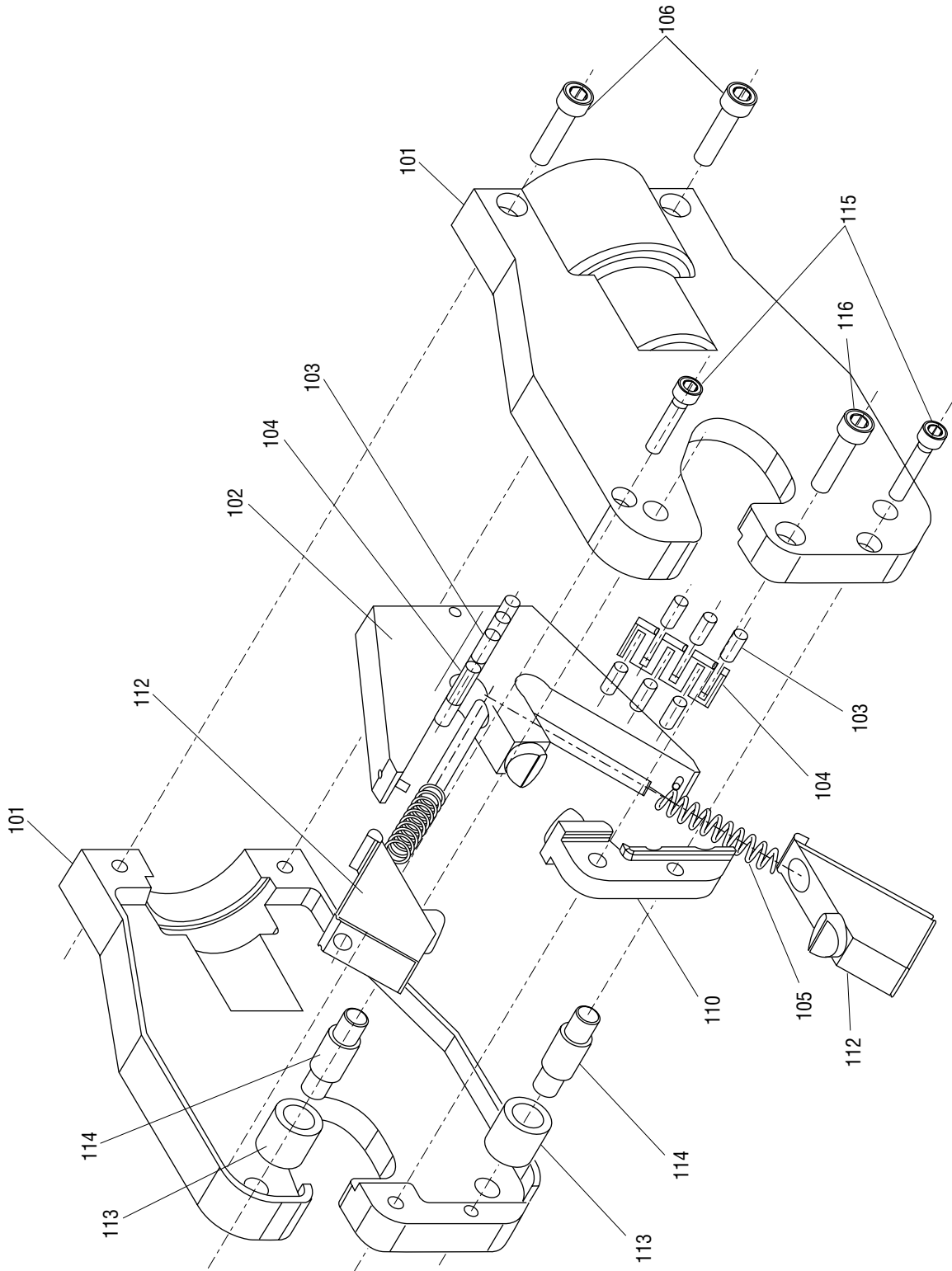
1. Center a test slug between the nibs.
2. Pump the handle to advance the nibs. Continue pumping until the pressure relief valve activates.
3. After achieving pressure relief, the ram automatically returns to the start position and the nibs retract.
4. Evaluate the test slug as follows:
 - If the test slug does not fit into GO slot, the pressure relief valve is set too high. Send the crimping tool to an authorized Greenlee service center.
 - If the test slug fits into the GO slot, the pressure relief valve is set correctly.
 - If the test slug fits into the NO GO slot, the pressure relief valve is set too low. Send the crimping tool to an authorized Greenlee service center.



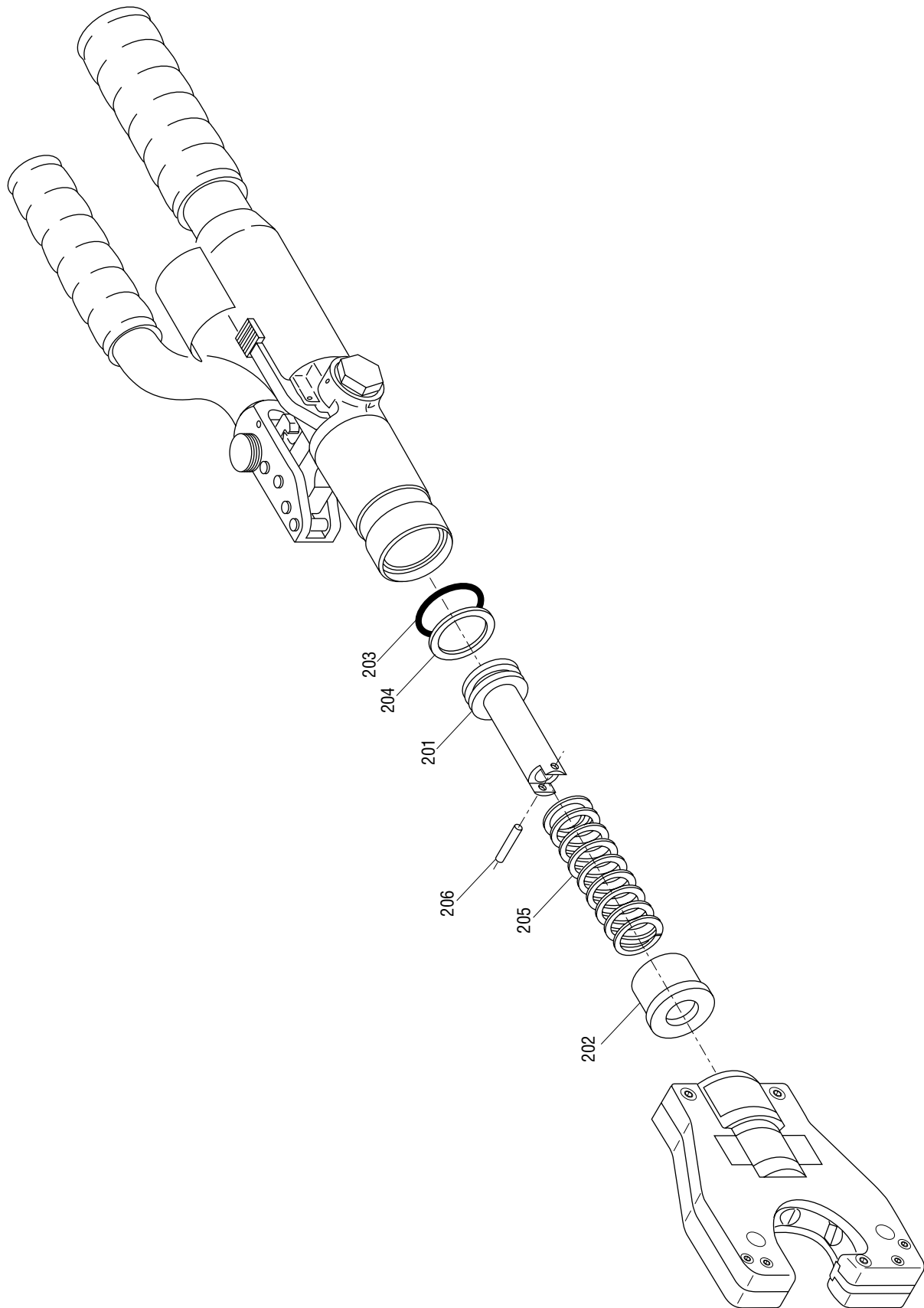
Illustration



Illustration



Illustration



Parts List

Key	Part No.	Description	Qty
1	500 6384.7	Pump body	1
2	500 6345.6	Pump piston	1
3	500 6346.4	Sleeve	1
4	500 6348.0	Ram	1
5	500 6349.9	Screw plug.....	1
6	500 6354.5	Release pin	1
7	500 6355.3	Release lever	1
8	500 5882.7	Filter adapter	1
9	500 6344.8	Reservoir	1
10	500 6356.1	Pump handle	1
11	501 0376.8	Handle lock.....	1
12	500 6358.8	Spacer	2
13	500 6360.0	Release knob	1
14	500 6361.8	Roller	1
15	500 6364.2	Handle pin	4
16	500 6782.6	Handle tube	1
18	500 5878.9	Reservoir plug	1
19	500 6342.1	Grip, 25 mm.....	1
20	500 6343.0	Grip, 32 mm.....	1
21	500 6368.5	O-ring	1
22	500 6369.3	O-ring	1
23	500 4143.6	O-ring	1
24	500 5886.0	O-ring	1
25	500 6370.7	O-ring	1
26	500 6371.5	Copper washer	1
27	500 4144.4	Threaded bushing	1
28	500 4145.2	Threaded bushing	1
29	500 5885.1	Threaded bushing	1
30	500 6372.3	Spring, compression.....	1
31	500 6373.1	Spring, compression.....	1
32	501 0377.6	Spring, compression.....	1
33	500 5880.0	Filter	1
34	500 5898.3	Magnet	1
35	500 6375.8	Washer	1
37	500 6377.4	Roll pin	1
38	500 5876.2	Retaining ring	9
39	500 6335.9	Retaining ring	1
	500 6331.6	Pressure adjustment cartridge (includes items 41–49)	1
41	500 6378.2	Cartridge body	1
42	500 5863.0	Valve seat.....	1
43	500 5864.9	Plunger	1
44	500 6379.0	Needle valve.....	1
45	500 6380.4	Pressure adjustment screw	1
46	500 5894.0	Spring	1
47	500 5869.0	O-ring	1

Parts List (cont'd)

Key	Part No.	Description	Qty
48	500 5862.2	Seal	2
49	500 5860.6	Washer	2
50	500 7177.7	Ring tie	1
101A	500 6095.3	Head cover set with decal	1
101B	500 6526.2	Rubber-coated head cover set with decal	1
102	500 6092.9	Cam yoke assembly	1
103	500 6089.9	Roller bearings	12
104	500 6088.0	Bearing retainers	2
105	500 6091.0	Spring, compression	2
106	500 6100.3	Socket head cap screw	2
110	500 6084.8	Fixed jaw	1
112	500 6085.6	Moving side jaw	2
113	500 6086.4	Pivot roller	2
114	500 6087.2	Pivot pin	2
115	500 6101.1	Socket head cap screw	2
116	500 6099.6	Socket head cap screw	1
201	500 6381.2	Piston	1
202	500 6382.0	Sleeve	1
203	500 4192.4	O-ring, piston	1
204	500 4194.0	Backup ring, piston	1
205	500 5839.8	Spring, compression	1
206	500 6340.5	Dowel pin, 4 x 20 mm	1
	500 6214.0	Decal, pinch hazard	1
	500 6079.1	Decal, ID and warning	1
	500 6391.0	Steel case	1
Kits			
*	500 6395.2	Seal kit (includes items marked with an asterisk)	
	500 6129.1	Bearing/retainer kit (includes items 103 and 104)	
	500 6309.0	Test gage	
	500 6308.1	10 test slugs	
	500 6130.5	10 slugs with 10,000 psi gage	

GREENLEE TEXTRON

Greenlee Textron / Subsidiary of Textron Inc.

4455 Boeing Drive, Rockford, IL 61109-2988 USA

Customer Service (International): 815/397-7070 • Fax: 815/397-9247

Customer Service (North America): 800/435-0786 • USA Fax: 800/451-2632, 815/397-1865

Canada Fax: 800/524-2853

www.greenlee.textron.com