

OWNER'S (OPERATOR'S) MANUAL AND SAFETY INSTRUCTIONS

FOR

**HARRINGTON
CUMALONG
LEVER PULLER**

**3/4, 1, 1 1/2, 2, 3, 6 and 9
Ton Capacity**

Model L4

BEFORE USING THIS PRODUCT:

ALWAYS SAVE THIS BOOK FOR FUTURE REFERENCE

ALWAYS READ OWNER'S (OPERATOR'S) MANUAL AND SAFETY INSTRUCTIONS

- ⚠ WARNING :** **IMPROPER lever hoist use could result in death or serious injury. To avoid these hazards:**
- : NEVER hoist loads over or near people.**
 - : NEVER work under or near hoisted loads.**
 - : ALWAYS operate, inspect and maintain this hoist in accordance with applicable safety codes and regulations.**

These safety instructions contain important information to help you use the chain hoist in a safe manner.

HARRINGTON
HOISTS AND CRANES

6. WARRANTY

All products sold by Harrington Hoists, Inc. are warranted to be free from defect in material and workmanship from date of shipment by Harrington for the following periods:

Manual Hoists & Trolleys - 2 years
Electric Hoist & Trolleys, Crane Components - 1 year
Spare/Replacement Parts - 1 year

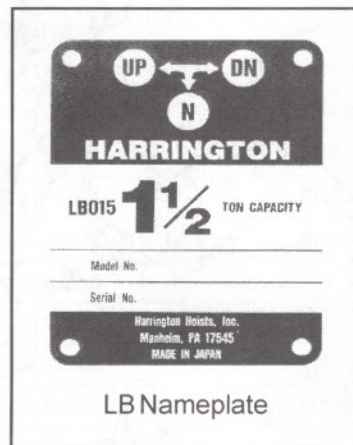
The product must be used in accordance with manufacturer's recommendations and must not have been subject to abuse, lack of maintenance, misuse, negligence, or unauthorized repairs or alterations.

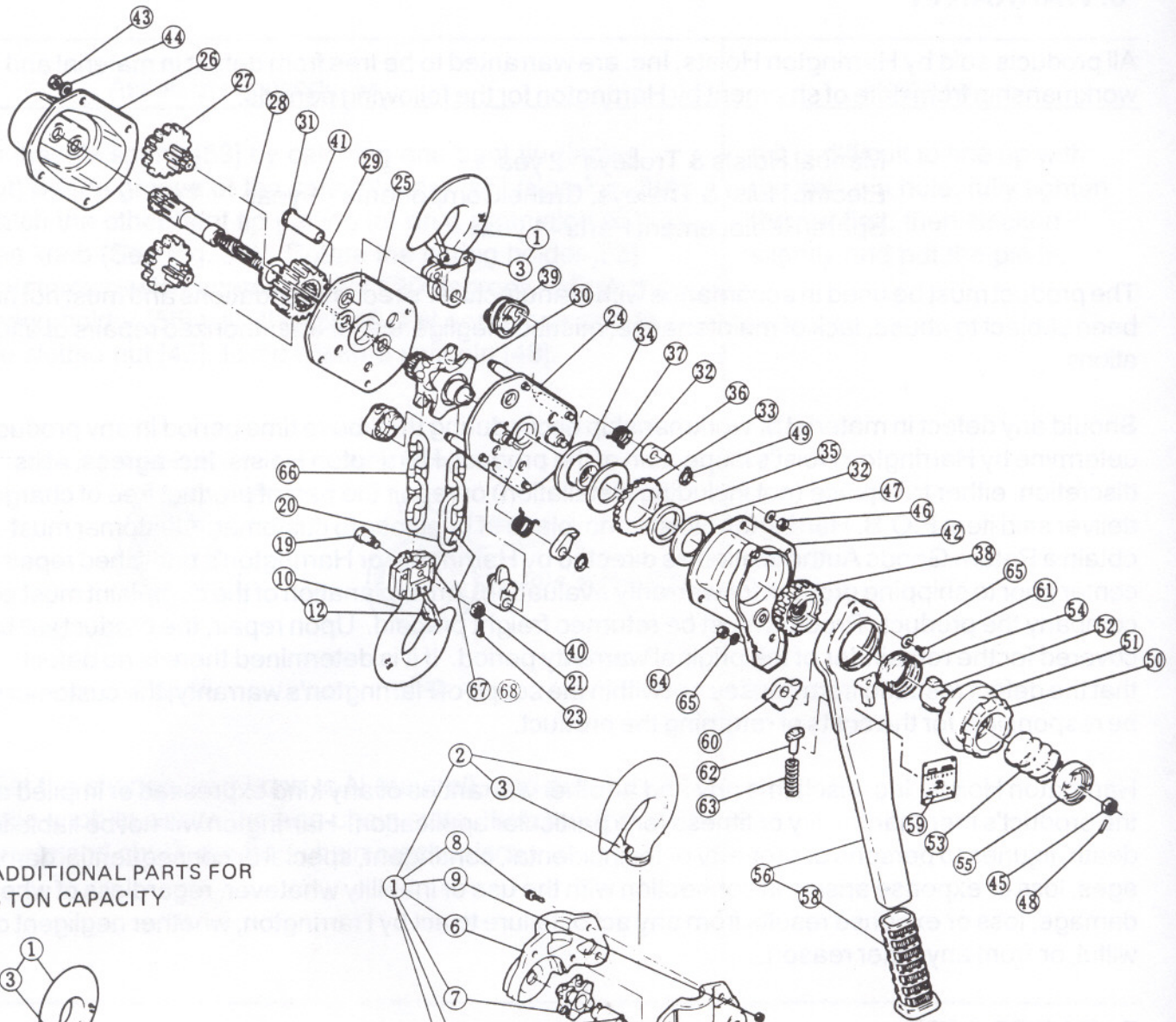
Should any defect in material or workmanship occur during the above time period in any product, as determine by Harrington Hoist's inspection of the product, Harrington Hoists, Inc. agrees, at its discretion, either to replace (not including installation) or repair the part of product free of charge and deliver said item F.O.B. Harrington Hoists, Inc. place of business to customer. Customer must obtain a Return Goods Authorization as directed by Harrington or Harrington's published repair center prior to shipping product for warranty evaluation. An explanation of the complaint must accompany the product. Product must be returned freight prepaid. Upon repair, the product will be covered for the remainder of the original warranty period. If it is determined there is no defect, or that the defect resulted from causes not within the scope of Harrington's warranty, the customer will be responsible for the costs of returning the product.

Harrington Hoists, Inc. disclaims any and all other warranties of any kind expressed or implied as to the product's merchantability or fitness for a particular application. Harrington will not be liable for death, injuries to persons or property or for incidental, contingent, special or consequential damages, loss or expense arising in connection with the use or inability whatever, regardless of whether damage, loss or expense results from any act or failure to act by Harrington, whether negligent or wilful, or from any other reason.

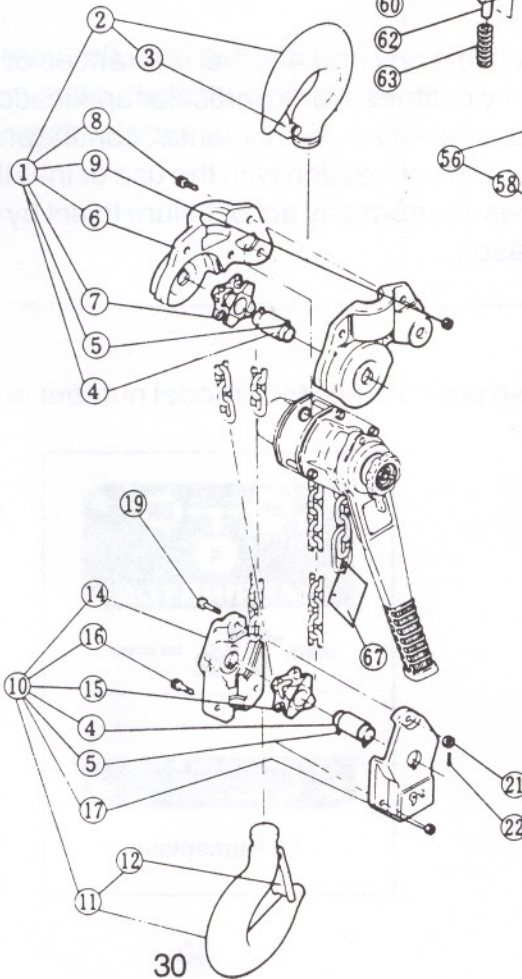
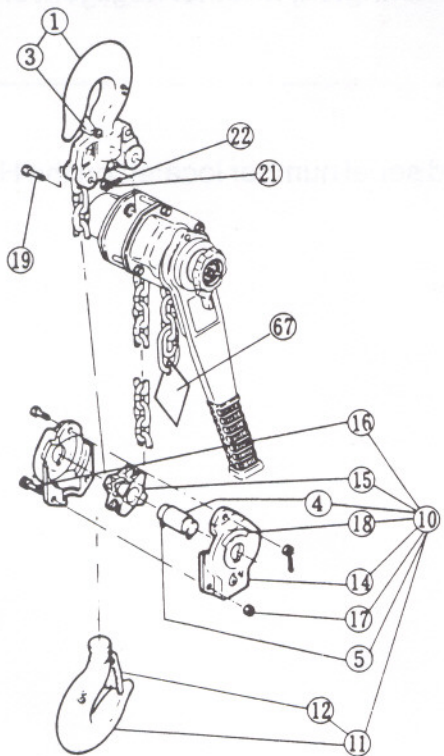
7. PARTS LIST

When ordering Parts, please provide the Hoist model number and serial number located on the Hoist nameplate (see fig. below).





ADDITIONAL PARTS FOR
6 TON CAPACITY



ADDITIONAL PARTS FOR
9 TON CAPACITY

Fig. No.	Part Name		Parts per Hoist	Capacity						
				3/4T	1T	1 1/2T	2T	3T	6T	9T
1	Top Hook Complete Set		1							L41001090
	Top Hook Assembly			L41001008	L41001010	L41001015	L41001020	L41001030	L41001060	
2	Hook Assembly		1							L42001090
3		Latch Assembly	1	L41071008		L41071015		L41071030	L41071060	L41071090
4	Shaft		1							L4053060
5	Shaft Stopper Pin		2							L4083060
6	Top Yoke A, B Set		1							L45011090
7	Idle Sheave		1							L4051060
8	Socket Bolt		3							90912116
9	Lever Nut		3							L4082090
10	Bottom Hook Complete		1						L41021060	L41021090
	Bottom Hook Assembly			L41021008	L41021010	L41021015	L41021020	L41021030		
11	Hook Assembly		1						L42001060	L42001090
12		Latch Assembly	1	L41071008		L41071015		L41071030	L41071060	L41071090
4	Shaft		1						L4053060	
5	Shaft Stopper Pin		2						L4083060	
14	Bottom Yoke Set		1						L45031060	L45031090
15	Idle Sheave		1						L4051060	
16	Socket Bolt		3(2)						9091296	90912116
17	Lever Nut		3(2)						L4082060	L4082090
18	Name Plate C		1						L4805060	
19	Chain Pin		1	L4041008		M3041015		M3041025	M3041075	
20	Chain Stopper Link		1	L4045008		L4045015		L4045030		
21	Slotted Nut for Fig. No. 19		1	M3049005		M2049010		M2049020		
22	Split Pin for Fig. No. 19		1					9009412		
23	Split Pin for Fig. No. 19		1	9009402		9009411		9009412		
24	Side Plate A Assembly		1	L45101008		L45101015		L45101030		
25	Side Plate B Assembly		1	L45102008		L45102015		L45102030		
26	Gear Case		1	L45103008		L45103015		L45103030		
27	Gear #2		2	L45112008		L45112015		L45112030		
28	Pinion		1	L4111008		L4111015		L4111030		
29	Load Gear		1	L4114008		L4114015		L4114030		
30	Load Sheave		1	L4116008		L4116015		L4116030		
31	Washer		1	L4117008		L4117015		L4117030		
32	Friction Plate		2	L4151008		L4151015				
33	Ratchet Disc		1	L4152008		L4152015				
34	Friction Disc		1	L4153008		L4153015				
35	Bushing		1	L4154008		L4154015				
36	Pawl		2	L4155008		L4155015		L4155030		
37	Pawl Spring		2	L4158008		L4158015				

Figures in parenthesis show the number for 9 ton capacity.

Figures in parenthesis show the number for 9 ton capacity.

Fig. No.	Part Name	Parts per Hoist	Capacity						
			3/4T	1T	1 1/2T	2T	3T	6T	9T
38	Female Thread	1	L4160008		L4160015				
39	Chain Guide	2	L4161008		L4161015		L4161030		
40	Stripper	1	L4162008		L4162015		L4162030		
41	Top Pin	1	L4163008		L4163015		L4163030		
42	Brake Cover Assembly	1	L45214008		L45214015		L45214030		
43	Nut for Fig. No. 26	4	9093424				9093427		
44	Spring Washer for Fig. No. 26	4	9012711				9012712		
45	Slotted Nut for Fig. No. 28	1	M2049010		M2049020				
46	Nut for Fig. No. 42	4	9093424				9093427		
47	Spring Washer for Fig. No. 42	4	9012711				9012712		
48	Split Pin for Fig. No. 28	1	9009411		9009413				
49	Snap Ring for Fig. No. 36	2	L4188008		L4188015				
50	Free Knob	1	L4201008		L4201015				
51	Name Plate U	1	L4810008						
52	Cam Guide	1	L4203008		L4203015				
53	Idle Spring	1	L4205008		L4205015				
54	Brake Spring	1	L4207008		L4207015				
55	Spring Holder	1	L4208008		L4208015				
56	Lever Assembly	1	L46211008		L46211015				
58	Grip	1	L4231008		L4231015				
59	Name Plate with Rivets	1	L4800008	L4800010	L4800015	L4800020	L4800030	L4800060	L4800090
60	Change-Over Pawl	1	L4218008		L4218015				
61	Machine Screw with Spring Washer for Fig. No. 56	1	L4221008						
	Screw for Fig. No. 56	1			L4221015				
62	Spring Shaft	1	L4222008		L4222015				
63	Change-Over Spring	1	L4223008		L4223015				
64	Nut for Fig. No. 42	2	9093420		9093424				
65	Spring Washer for Fig. No. 42	2	9012709						
		3			9012711				
66	Load Chain	FT	LCLB010		LCCF015		LCC3025		
67	Warning Tag*	1	WTAG3						

Any lift of chain available on request. The load chain is heat treated. No addition to the chain to increase the length is possible. The chain must be replaced with a new one of desired length. Specify the length of chain when ordering. Example length is equal to desired lift (L) times the number of chain falls plus free end length (FT).

LB008 L + 1 FT
 LB010 L + 1 FT
 LB015 L + 1 FT
 LB020 L + 1 FT

LB030 L + 1 FT
 LB060 2L + 2 FT
 LB090 3L + 2.5 FT

LEVER ASSEMBLY FOR LOAD SIGNAL TYPE

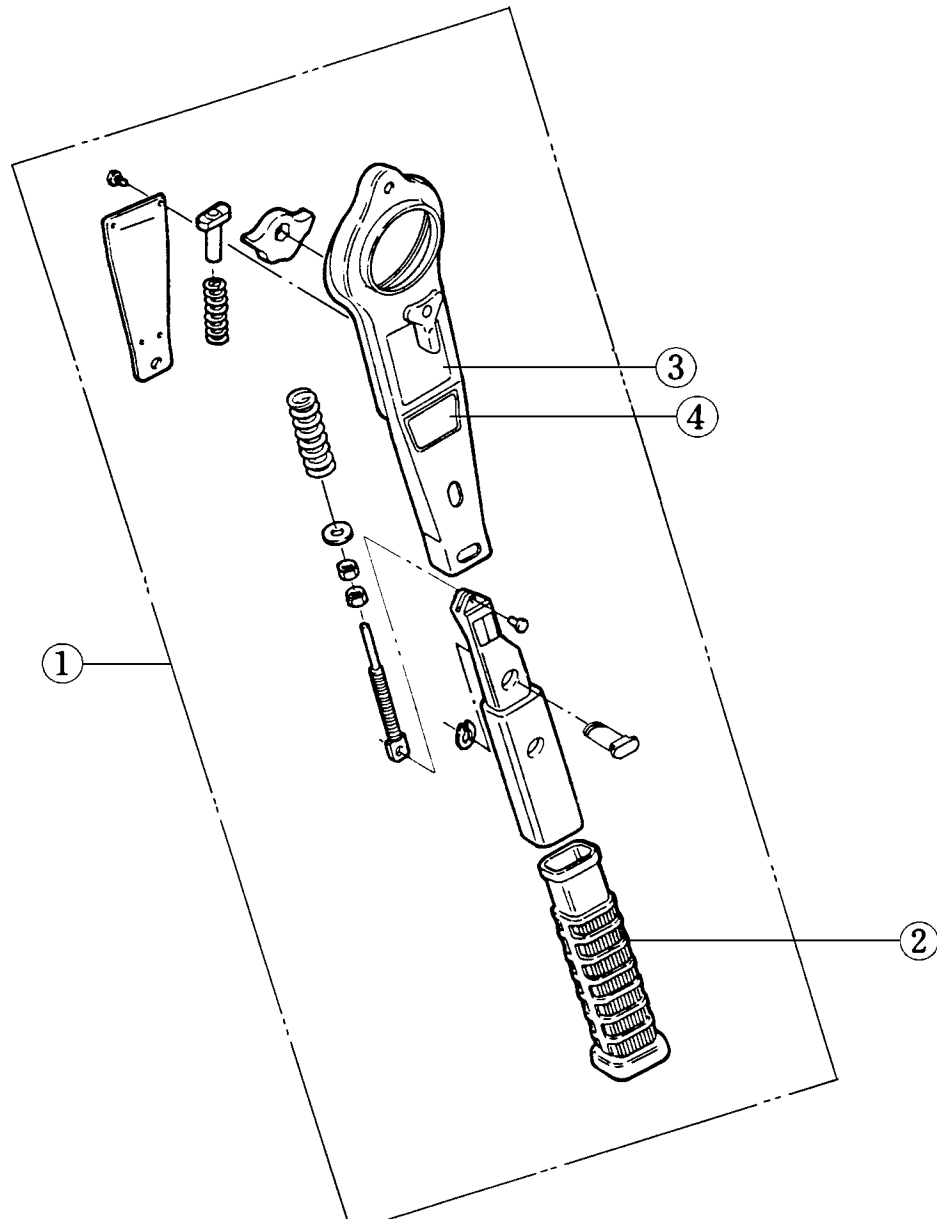


Fig. No.	Part Name		Parts per Hoist	Capacity						
				3/4T	1T	1 1/2T	2T	3T	6T	9T
1	Lever Complete Set		1	Y2SE008-6211	Y2SU010-6211	Y2SE015-6211	Y2SU020-6211	Y2SE0306211		
	2	Grip	1	L4231S008						
3	Name Plate with Rivets		1	L4800008	L4800010	L4800015	L4800020	L4800030	L4800060	L4800090
4	Name Plate B		1	L4801S008						



www.harringtonhoists.com

Harrington Hoists, Inc.
401 West End Ave.
Manheim, PA 17545
Phone: 717-665-2000
Toll Free: 800-233-3010
Fax: 717-665-2861

Harrington Hoists-Western Division
2341 Pomona Rincon Rd. #103
Corona, CA 92880
Phone: 909-279-7100
Toll Free: 800-317-7111
Fax: 909-279-7500

L4LBPL