



**Please DO NOT return product to the retail store.**

For technical assistance and product return information, please call  
Customer Care: **877-221-1252** Mon. - Fri. 8:00 A.M. to 4:45 P.M. (CST)

[www.chaneyinstrument.com](http://www.chaneyinstrument.com)

**LIMITED ONE YEAR WARRANTY**

Chaney Instrument Company warrants that all products it manufactures to be of good material and workmanship and to be free of defects if properly installed and operated for a period of one year from date of purchase. REMEDY FOR BREACH OF THIS WARRANTY IS EXPRESSLY LIMITED TO REPAIR OR REPLACEMENT OF DEFECTIVE ITEMS. Any product which, under normal use and service, is proven to breach the warranty contained herein within ONE YEAR from date of sale will, upon examination by Chaney, and at its sole option, be repaired or replaced by Chaney. In all cases, transportation costs and charges for returned goods shall be paid for by the purchaser. Chaney hereby disclaims all responsibility for such transportation costs and charges. This warranty will not be breached, and Chaney will give no credit for products it manufactures which shall have received normal wear and tear, been damaged, tampered, abused, improperly installed, damaged in shipping, or repaired or altered by others than authorized representatives of Chaney.

THE ABOVE-DESCRIBED WARRANTY IS EXPRESSLY IN LIEU OF ALL OTHER WARRANTIES, EXPRESS OR IMPLIED, AND ALL OTHER WARRANTIES ARE HEREBY EXPRESSLY DISCLAIMED, INCLUDING WITHOUT LIMITATION THE IMPLIED WARRANTY OF MERCHANTABILITY AND THE IMPLIED WARRANTY OF FITNESS FOR A PARTICULAR PURPOSE. CHANEY EXPRESSLY DISCLAIMS ALL LIABILITY FOR SPECIAL, CONSEQUENTIAL OR INCIDENTAL DAMAGES, WHETHER ARISING IN TORT OR BY CONTRACT FROM ANY BREACH OF THIS WARRANTY. SOME STATES DO NOT ALLOW THE EXCLUSION OR LIMITATION OF INCIDENTAL OR CONSEQUENTIAL DAMAGES, SO THE ABOVE LIMITATION OR EXCLUSION MAY NOT APPLY TO YOU. CHANEY FURTHER DISCLAIMS ALL LIABILITY FROM PERSONAL INJURY RELATING TO ITS PRODUCTS TO THE EXTENT PERMITTED BY LAW. BY ACCEPTANCE OF ANY OF CHANEY'S EQUIPMENT OR PRODUCTS, THE PURCHASER ASSUMES ALL LIABILITY FOR THE CONSEQUENCES ARISING FROM THEIR USE OR MISUSE. NO PERSON, FIRM OR CORPORATION IS AUTHORIZED TO ASSUME FOR CHANEY ANY OTHER LIABILITY IN CONNECTION WITH THE SALE OF ITS PRODUCTS. FURTHERMORE, NO PERSON, FIRM OR CORPORATION IS AUTHORIZED TO MODIFY OR WAIVE THE TERMS OF THIS PARAGRAPH, AND THE PRECEDING PARAGRAPH, UNLESS DONE IN WRITING AND SIGNED BY A DULY AUTHORIZED AGENT OF CHANEY. THIS WARRANTY GIVES YOU SPECIFIC LEGAL RIGHTS, AND YOU MAY ALSO HAVE OTHER RIGHTS WHICH VARY FROM STATE TO STATE.

**For in-warranty repair, please contact:**

Customer Care Department  
Chaney Instrument Company  
965 Wells Street  
Lake Geneva, WI 53147

**Chaney Customer Care**

**877-221-1252**  
**Mon-Fri 8:00 a.m. to 4:45 p.m. CST**

[www.chaneyinstrument.com](http://www.chaneyinstrument.com)



This device complies with part 15 of the FCC rules. Operation is subject to the following two conditions:  
1- This device may NOT cause harmful interference, and  
2- This device must accept any interference received, including interference that may cause undesired operation.

NOTE: This equipment has been tested and found to comply with the limits for a Class B digital device, pursuant to Part 15 of the FCC rules. These limits are

designed to provide reasonable protection against harmful interference in a residential installation. This equipment generates, uses and can radiate radio frequency energy and, if not installed and used in accordance with the instructions, may cause harmful interference to radio communications. However, There is no guarantee that interference will not occur in a particular installation. If this equipment does cause harmful interference to radio or television reception, which can be determined by turning the equipment off and on, the user is encouraged to try to correct the interference by one or more of the following measures:

- Reorient or relocate the receiving antenna.
- Increase the separation between the equipment and the receiver.
- Connect the equipment into an outlet on a circuit different from that to which the receiver is connected.
- Consult the dealer or an experienced radio/TV technician for help.

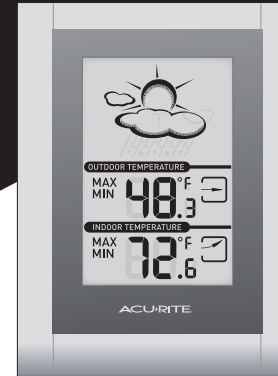
NOTE: The manufacturer is not responsible for any radio or TV interference caused by unauthorized modifications to this equipment. Such modifications could void the user authority to operate the equipment.

Patent numbers: 5,978,738; 6,076,044; 6,597,990

**ACURITE®**  
DESIGNED TO WORK FOR YOU™

Forecaster  
with Wireless Thermometer  
#00823

## Instruction Manual



A. Main Unit



B. Wireless Sensor

Package Contents:  
(A) Main Unit  
(B) Wireless Sensor  
(1) Hardware Bag  
(1) Instruction Manual

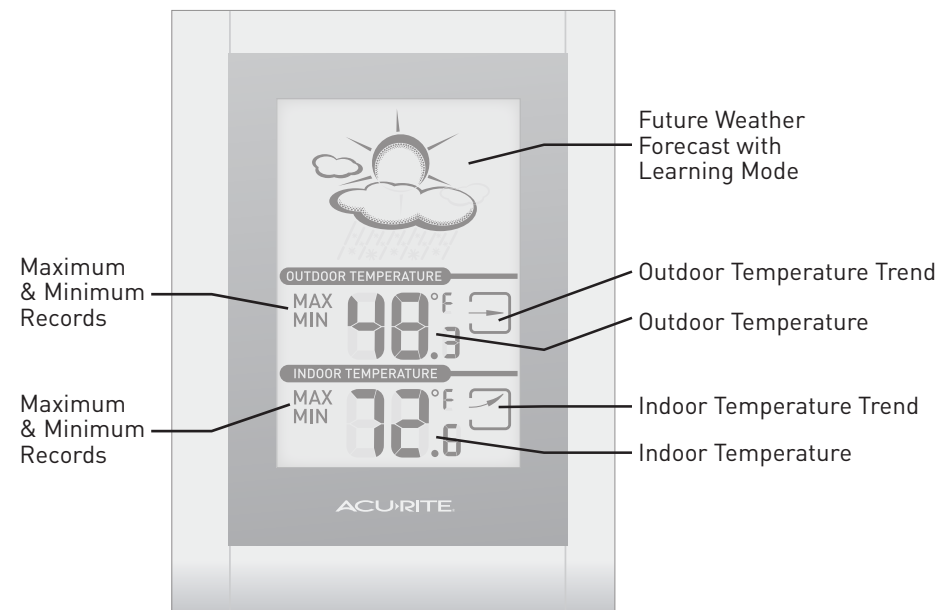
**What You Need:**

- Philips Screwdriver
- (4) AA batteries  
-see "Install Batteries"  
on page 2

**Thank You for purchasing this ACURITE® product. Please read this manual in it's entirety to fully enjoy the benefits and features of this product. Please keep this manual for future reference.**

**NOTE: A clear film is applied to the LCD at the factory that must be removed prior to using this product. Locate the clear tab and simply peel to remove.**

### 1 • OVERVIEW OF FEATURES



## 2 • SETUP

### Install Batteries

NOTE: Install all batteries in both units within a 6 minute period to ensure proper wireless functionality.

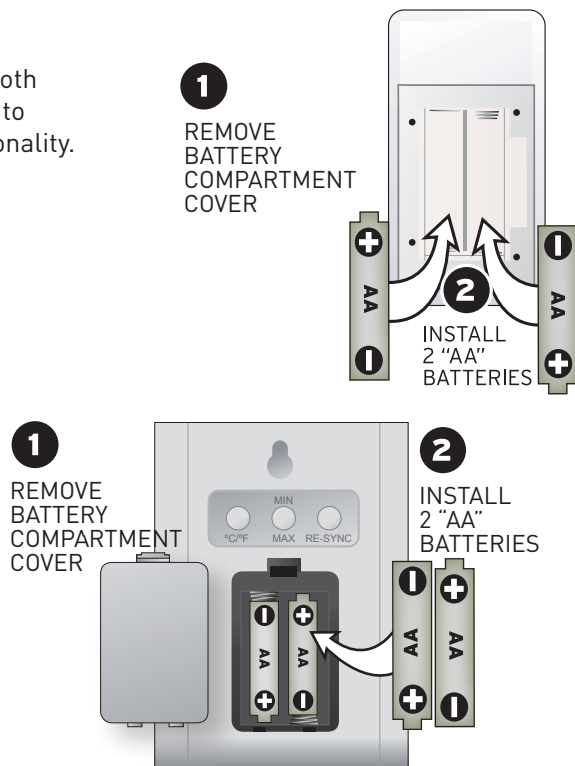
#### A. Wireless Sensor

Remove the battery compartment cover and install 2 fresh "AA" batteries as shown here.

**Always install batteries into the wireless sensor FIRST** to ensure proper wireless synchronization with the main unit.

#### B. Main Unit

Remove the battery compartment cover and install 2 fresh "AA" batteries as shown here.



#### Operating Range of Batteries

LITHIUM BATTERIES	-40°F (-30°C)	(70°C) 158°F
ALKALINE BATTERIES	-40°F (-20°C)	(70°C) 158°F

Extended periods of cold temperatures ( below -40°F / -20°C ) can cause alkaline batteries to function improperly. This will cause the outdoor wireless sensor to stop transmitting temperature readings. Use lithium batteries in these low temperature conditions to ensure continued operation for wireless sensors placed outdoors.

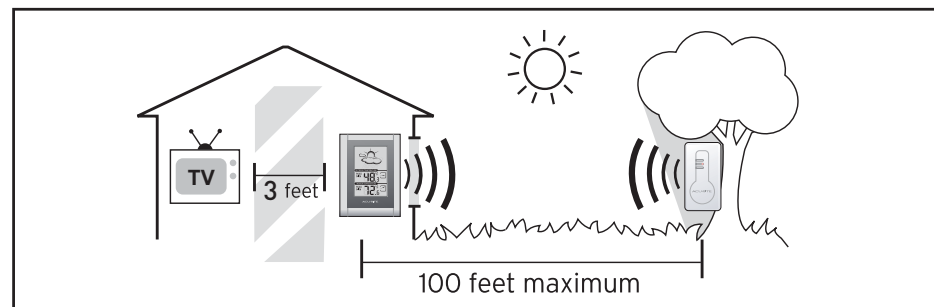
### Basic Setup is Now Complete

The wireless sensor will soon send a signal to the main unit and the two units will be synchronized. The wireless sensor features a red light on the front which will illuminate briefly once a minute to indicate it is sending a signal. It may take a few minutes for synchronization to be complete. If both or one of the units appear to be functioning improperly, refer to the troubleshooting section in this manual.

## 3 • PLACEMENT

Now that setup is complete, you must choose a location to place the wireless sensor and the main unit. The wireless sensor **MUST** be placed less than 100 feet away from the main unit.

This wireless thermometer uses radio frequency for communication, which is susceptible to interference from other electronic devices and large metallic items or thick walls. Always place both units at least 3 feet away from appliances ( TV, microwave, radios, etc. ) or objects ( large metal surfaces, thick stone walls, etc. ) that may interfere with the wireless communication.



### Placement of Main Unit

Place the main unit in a dry area free of dirt and dust. To help ensure an accurate indoor temperature measurement, be sure to place the main unit out of direct sunlight, and away from any heat sources or vents in your home.

There are 2 placement options for the main unit. You may hang the main unit on a wall using the integrated hang hole. Alternatively, you may place the main unit on a table top or other flat surface.



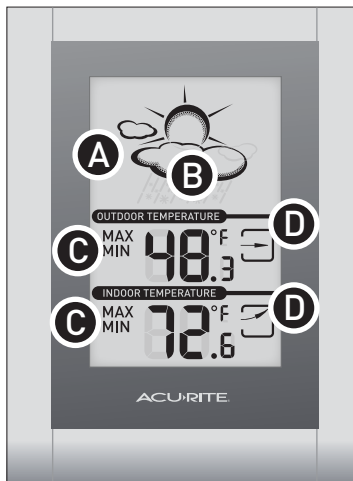
### Placement of Sensor

The wireless sensor **MUST BE PLACED OUTDOORS** to observe outdoor temperatures and relay the outdoor temperature to the main unit display. The wireless sensor must be placed less than 100 feet from the main unit.

The wireless sensor is water resistant and is designed for outdoor use. However, to extend the life of the product, place the wireless sensor in an area protected from direct weather elements. To ensure an accurate outdoor temperature measurement, be sure the wireless sensor is placed out of direct sunlight and away from any heat sources.

## 4 • OPERATION

After the main unit and the wireless sensor are both powered on and wirelessly synchronized, no further input is required. If you have problems receiving the outdoor temperature, please refer to the troubleshooting section of this manual.



### A 14 Day Learning Mode

This weather station has a patent pending fourteen day learning mode calibration process. During this learning mode, the weather station will make altitude calculations that may affect the accuracy of the forecast icon. After the initial 14 day learning period, the forecast feature will be ready for superior operation.

### B Forecast Icon

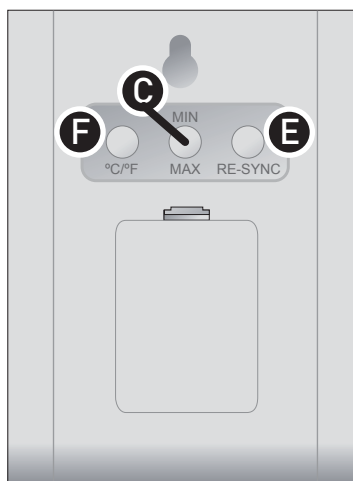
This feature gives you the predicted weather forecast for the next 12 to 24 hours based on an advanced algorithm that includes barometric pressure and temperature. This weather station will provide the most accurate forecast that a single station weather instrument can provide.

### C Minimum/Maximum Recorded Temperatures

The main unit has a memory function for storing minimum and maximum recorded indoor and outdoor temperatures. You may view the MIN and MAX recorded temperatures by pressing the "MIN/MAX" button on the back of the main unit.

### D Trend Indicator Icons

The main unit features arrow icons for indicating a falling, steady or rising temperature. This feature is shown for the outdoor and indoor temperatures.



### E Re-Synchronize Wireless Signal

This weather station features a button for re-synchronizing the wireless signal with the outdoor temperature sensor. Press this button to attempt to re-synchronize in the event you lose connection with the outdoor sensor due to interference or battery changes.

### F °C/°F Selection

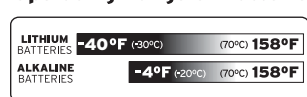
Press this button to switch between °C or °F temperature scale selections.

## 5 • TROUBLESHOOTING

This product features a low power wireless signal, so it does not interfere with other wireless devices in your location. Occasionally, there will be a temporary disconnection to the wireless sensor. In most cases, the temperature will show again if the main unit and wireless temperature sensor are able to re-connect automatically. If the disconnection lasts longer than a few hours, refer to this troubleshooting guide.

Problem	Possible Solutions
<p>Bad Temperature Reception</p> <p>FLASHING TEMPERATURE</p>	<p>Relocate the main unit and/or the wireless sensor. Both units must be within 100 feet from each other. Make sure both units are placed at least 3 feet from other electronic appliances and devices that may interfere with the wireless communication (such as TV's, microwaves, computers etc).</p> <p>You may need to press the "RE-SYNC" button on the back of the main unit. NOTE: It may take up to 20 minutes for the main unit to re-synchronize with the sensor when batteries are replaced.</p>
<p>Main Unit Display Not Working</p>	<p>Make certain that the batteries are installed correctly. The batteries may need replacing.</p> <p>If none of the above solutions resolve the problem, you may need to reset both units by removing and re-installing the batteries in both unit.</p>

### Operating Range of Batteries



Extended periods of cold temperatures ( below -4°F / -20°C ) can cause alkaline batteries to function improperly. This will cause the outdoor wireless sensor to stop transmitting temperature readings. Use lithium batteries in these low temperature conditions to ensure continued operation for wireless sensors placed outdoors.

**ACURITE**  
DESIGNED TO WORK FOR YOU

Product Registration

To receive product information, register your product online. It's quick and easy!

Log on to [http://www.chaneyinstrument.com/product\\_reg.htm](http://www.chaneyinstrument.com/product_reg.htm)

## Measurement Ranges

### Temperature

Main Unit: 32°F to 122°F / 0°C to 50°C

Wireless Sensor: -40°F to 158°F / -40°C to 70°C

## Specifications

### Power Requirements

Main Unit: 2 x "AA" alkaline or lithium batteries

Wireless Sensor: 2 x "AA" alkaline or lithium batteries

### Wireless Communication

Radio Frequency: 433 mhz

Transmission Intervals: every 16 seconds