

#### LIMITED ONE YEAR WARRANTY

Chaney Instrument Company warrants that all products it manufactures to be of good material and workmanship and to be free of defects if properly installed and operated for a period of one year from date of purchase. REMEDY FOR BREACH OF THIS WARRANTY IS EXPRESSLY LIMITED TO REPAIR OR REPLACEMENT OF DEFECTIVE ITEMS. Any product which, under normal use and service, is proven to breach the warranty contained herein within ONE YEAR from date of sale will, upon examination by Chaney, and at its sole option, be repaired or replaced by Chaney. In all cases, transportation costs and charges for returned goods shall be paid for by the purchaser. Chaney hereby disclaims all responsibility for such transportation costs and charges. This warranty will not be breached, and Chaney will give no credit for products it manufactures which shall have received normal wear and tear, been damaged, tampered, abused, improperly installed, damaged in shipping, or repaired or altered by others than authorized representatives of Chaney.

THE ABOVE-DESCRIBED WARRANTY IS EXPRESSLY IN LIEU OF ALL OTHER WARRANTIES, EXPRESS OR IMPLIED, AND ALL OTHER WARRANTIES ARE HEREBY EXPRESSLY DISCLAIMED, INCLUDING WITHOUT LIMITATION THE IMPLIED WARRANTY OF MERCHANTABILITY AND THE IMPLIED WARRANTY OF FITNESS FOR A PARTICULAR PURPOSE. CHANEY EXPRESSLY DISCLAIMS ALL LIABILITY FOR SPECIAL, CONSEQUENTIAL OR INCIDENTAL DAMAGES, WHETHER ARISING IN TORT OR BY CONTRACT FROM ANY BREACH OF THIS WARRANTY. SOME STATES DO NOT ALLOW THE EXCLUSION OR LIMITATION OF INCIDENTAL OR CONSEQUENTIAL DAMAGES, SO THE ABOVE LIMITATION OR EXCLUSION MAY NOT APPLY TO YOU. CHANEY FURTHER DISCLAIMS ALL LIABILITY FROM PERSONAL INJURY RELATING TO ITS PRODUCTS TO THE EXTENT PERMITTED BY LAW. BY ACCEPTANCE OF ANY OF CHANEY'S EQUIPMENT OR PRODUCTS, THE PURCHASER ASSUMES ALL LIABILITY FOR THE CONSEQUENCES ARISING FROM THEIR USE OR MISUSE. NO PERSON, FIRM OR CORPORATION IS AUTHORIZED TO ASSUME FOR CHANEY ANY OTHER LIABILITY IN CONNECTION WITH THE SALE OF ITS PRODUCTS. FURTHERMORE, NO PERSON, FIRM OR CORPORATION IS AUTHORIZED TO MODIFY OR WAIVE THE TERMS OF THIS PARAGRAPH, AND THE PRECEDING PARAGRAPH, UNLESS DONE IN WRITING AND SIGNED BY A DULY AUTHORIZED AGENT OF CHANEY. THIS WARRANTY GIVES YOU SPECIFIC LEGAL RIGHTS, AND YOU MAY ALSO HAVE OTHER RIGHTS WHICH VARY FROM STATE TO STATE.

#### For in-warranty repair, please contact:

Customer Care Department  
Chaney Instrument Co.  
965 Wells Street  
Lake Geneva, WI 53147

This device complies with part 15 of the FCC rules. Operation is subject to the following two conditions:

- 1- This device may NOT cause harmful interference, and
- 2- This device must accept any interference received, including interference that may cause undesired operation.

NOTE: This equipment has been tested and found to comply with the limits for a Class B digital device, pursuant to Part 15 of the FCC rules. These limits are designed to provide reasonable protection against harmful interference in a residential installation. This equipment generates, uses and can radiate radio frequency energy and, if not installed and used in accordance with the instructions, may cause harmful interference to radio communications. However, There is no guarantee that interference will not occur in a particular installation. If this equipment does cause harmful interference to radio or television reception, which can be determined by turning the equipment off and on, the user is encouraged to try to correct the interference by one or more of the following measures:

- Reorient or relocate the receiving antenna.
- Increase the separation between the equipment and the receiver.
- Connect the equipment into an outlet on a circuit different from that to which the receiver is connected.
- Consult the dealer or an experienced radio/TV technician for help.

NOTE: The manufacturer is not responsible for any radio or TV interference caused by unauthorized modifications to this equipment. Such modifications could void the user authority to operate the equipment.

**ACURITE**  
DESIGNED TO WORK FOR YOU™



**Weather Forecaster**  
model #00821

**Instruction Manual**

## Introduction

The AcuRite® Weather Forecaster with wireless outdoor sensor collects weather data and sends the data via wireless signal to the indoor display unit to generate your personal forecast of weather conditions for the next 12-24 hours. This weather forecaster has been designed to be easy to install and use.

The sleek display unit houses a liquid crystal display (LCD) which will calculate and display the weather data received from the wireless sensor outside. The display unit features built-in sensors for measuring barometric pressure, humidity and indoor temperature. The display unit is powered with three "AA" alkaline batteries (not included).

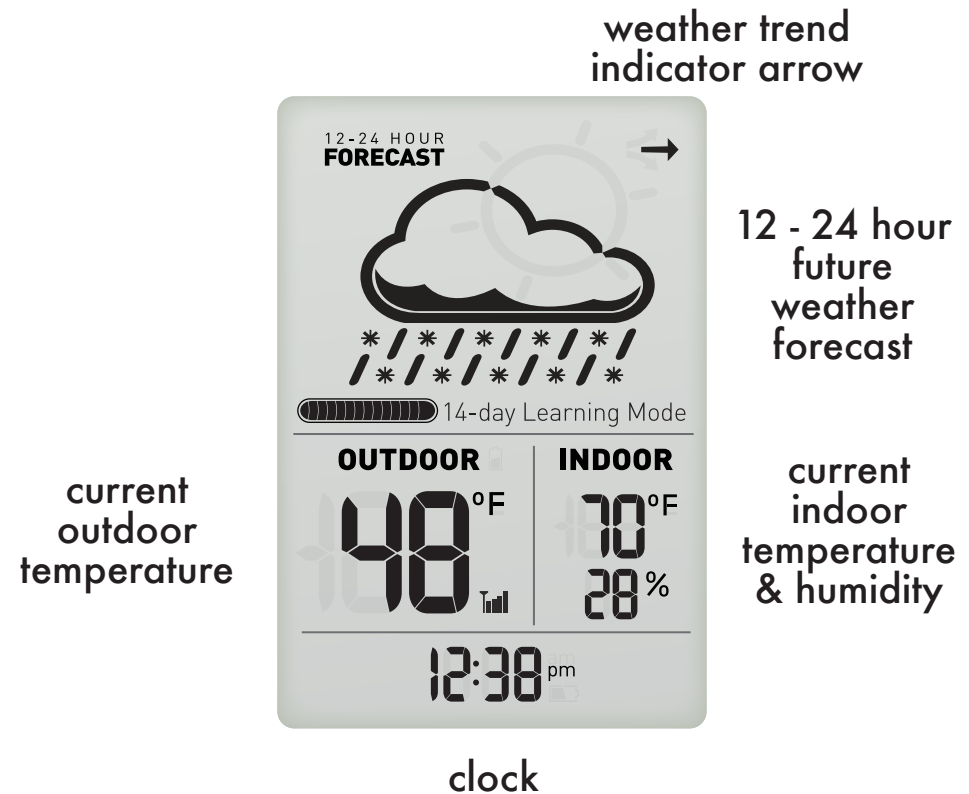
The outdoor sensor is completely wireless and measures outdoor temperature. The outdoor sensor is powered with two "AA" alkaline or lithium batteries (not included).

Please read through this manual to learn more. Keep this manual for future reference.

## Parts List model #00821

1. Display unit
2. Wireless outdoor sensor
3. Instruction manual

## Display Features



## Battery Choice & Temperature Range

Extended periods of cold temperatures ( below  $-4^{\circ}\text{F}$  /  $-20^{\circ}\text{C}$  ) can cause alkaline batteries to function improperly. This will cause the outdoor sensor to stop transmitting temperature readings. Use lithium batteries in low temperature conditions to ensure continued operation for wireless sensors placed outdoors. NOTE: Rechargeable batteries are not recommended due to higher operating voltages.

**LITHIUM BATTERIES**  **$-40^{\circ}\text{F}$**  ( $-40^{\circ}\text{C}$ ) (70°C)  **$158^{\circ}\text{F}$**

**ALKALINE BATTERIES**  **$-4^{\circ}\text{F}$**  ( $-20^{\circ}\text{C}$ ) (70°C)  **$158^{\circ}\text{F}$**

## Install Batteries - Outdoor Sensor

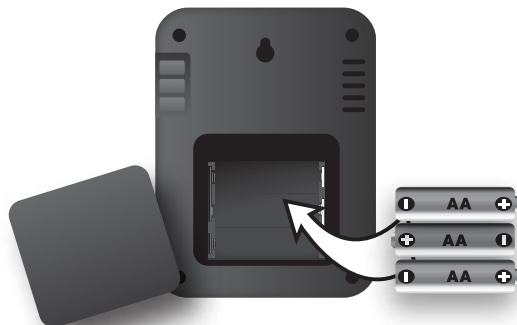
Remove the battery compartment cover. Install 2 fresh "AA" batteries as shown here.



**BATTERIES MUST BE INSTALLED FOR THE SENSOR TO OPERATE**

## Install Batteries - Display Unit

Remove the battery compartment cover. Install 3 fresh "AA" batteries as shown here.



## Display Unit : Basic Setup

Press and hold the "SET" button to enter into setup mode. The time will begin blinking.

To adjust the currently selected (flashing) preference item, press the "▲" or "▼" buttons.

To save your adjustments, press the "SET" button again to move on to adjusting the next preference. The preference set order is as follows:

- CLOCK HOUR
- CLOCK MINUTE
- TEMPERATURE SCALE ( $^{\circ}\text{F}$  or  $^{\circ}\text{C}$ )

You will automatically exit SET MODE if no entries are changed for 30 seconds. You may enter basic setup mode again at any time by pressing the "SET" button.

## Wireless Signal Reception Icon

The display unit has a wireless signal reception icon near the outdoor temperature display area. If there are a low number of "bars" present in the icon, you may experience no temperature display ( "- -" ) or inaccuracy. In either case, you may need to relocate one or both of the units. If most or all 4 of the bars are present, wireless reception is good and no action is required.

SEARCHING FOR SIGNAL



(animated bars)

SIGNAL RECEPTION



LOW



HIGH

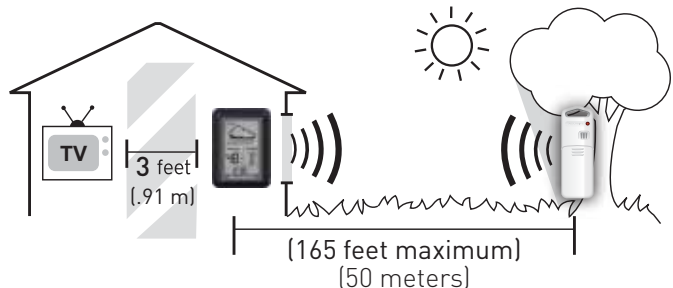
NO SIGNAL RECEPTION



(flashing tower)

Now that setup is complete, you must choose a location to place the outdoor sensor and the display unit. The sensor **MUST** be placed less than 165 feet (50 m) away from the display unit.

This wireless weather forecaster uses radio frequency for communication, which is susceptible to interference from other electronic devices and large metallic items or thick walls. Place both units at least 3 feet (.91 m) away from appliances (TV, microwave, radios, etc.) or objects that may interfere with the wireless communication (large metal surfaces, thick stone walls, etc.).



### Placement of Display Unit

Place the display unit in a dry area free of dirt and dust. To help ensure accurate indoor temperature measurement, place the display unit out of direct sunlight, and away from heat sources or vents. There are 2 placement options for the display unit. You may hang the unit on a wall using the integrated hang hole. Alternatively, the unit stands upright on a table top or other flat surface.

### Placement of Sensor

The sensor **MUST BE PLACED OUTDOORS** to observe outdoor temperatures. The sensor must be placed less than 165 feet (50 m) from the display unit. The sensor is water resistant and is designed for general outdoor use. However, to extend the life of the product, place the sensor in an area protected from direct weather elements. To ensure accurate outdoor temperature measurement, place the sensor out of direct sunlight and away from heat sources.

There are 2 placement options for the sensor. You may hang it using one of the two integrated hang holes, or use string (not included) to hang it from a suitable location, like a well covered tree branch.

### Forecast Icon



This weather forecaster uses patented Self-Calibrating Technology to provide your personal forecast of 12 to 24 hour weather conditions. Self-Calibrating Forecasting is generated from the barometric pressure and temperature data measured by the wireless sensor in your yard - giving you the most accurate forecast available for your exact location.



Please visit [AcuRite.com](http://AcuRite.com) for the complete list of forecast icon definitions.

### 14-Day Learning Mode

This weather station has a patented 14-day "Learning Mode" calibration process. During this Learning Mode, the weather station will make altitude calculations that may affect the accuracy of the weather forecast. Once the Learning Mode process is complete, the Learning Mode icon will disappear from the display unit and the weather forecast is ready for superior operation.

Problem	Possible Solution(s)
<p><b>Low or NO Wireless Sensor Reception</b></p>  <p><b>low reception</b></p>  <p><b>NO reception</b> no bars and flashing " - - " temp/humidity data</p>	<p>Relocate the display console and/or the wireless sensor. Both units must be within 165 feet (50 meters) from each other. Make sure both units are placed at least 3 feet (.91 m) from other electronic appliances and devices that may interfere with the wireless communication (such as TV's, microwaves, computers etc).</p> <p>NOTE: It may take up to 20 minutes for the display console to re-synchronize with the sensor when batteries are replaced.</p> <p>Use lithium batteries in sensor when temperature is below -4°F (-20°C).</p>
<p><b>Display Unit Screen Not Working</b></p>	<p>Batteries may need replacing. Check that batteries are correctly installed. Reset the display unit and wireless sensor.</p>
<p><b>Forecast Seems Inaccurate</b></p>	<p>This weather station has a patented 14-day "Learning Mode" calibration process. During this Learning Mode the weather station will make altitude calculations that may affect the accuracy of the forecast. Once the 14-day Learning Mode process is complete, the Learning Mode icon will disappear and the weather forecast is ready for superior operation.</p> <p>Make sure the wireless outdoor sensor is placed outdoors and is placed in a location that will most accurately report the outside temperature conditions, these readings directly affect the forecast feature.</p>



[www.AcuRite.com](http://www.AcuRite.com)



(877) 221-1252

**Product Facts**

Batteries: 4 x "AA" (not included)

Lithium Batteries Recommended in Outdoor Sensor if temperatures are below -4°F

**Measurement Ranges**

Outdoor Temperature : -40°F to 158°F  
-40°C 70°C

Indoor Temperature : 32°F to 122°F  
0°C 50°C

Indoor Humidity: 20% to 95%

Wireless Range : 165 ft / 50 m MAX

Limited One Year Warranty **MADE IN CHINA**

[www.AcuRite.com](http://www.AcuRite.com)

Patent numbers:  
5,978,738; 6,076,044; 6,597,990; US 7,637,141 B2  
ACURITE® is a registered trademark of  
Chaney Instrument Co. Lake Geneva, WI 53147

**PLEASE DISPOSE OF OLD OR DEFECTIVE BATTERIES IN AN ENVIRONMENTALLY SAFE WAY AND IN ACCORDANCE WITH YOUR LOCAL LAWS AND REGULATIONS.**

BATTERY SAFETY: Clean the battery contacts and also those of the device prior to battery installation. Remove batteries from equipment which is not to be used for an extended period of time. Follow the polarity (+/-) diagram in the battery compartment. Promptly remove dead batteries from the device. Dispose of used batteries properly. Only batteries of the same or equivalent type as recommended are to be used. DO NOT incinerate used batteries. DO NOT dispose of batteries in fire, as batteries may explode or leak. DO NOT mix old and new batteries or types of batteries (alkaline/standard). DO NOT use rechargeable batteries. DO NOT recharge

**IMPORTANT NOTICE**

YOUR PRODUCT MUST BE REGISTERED TO RECEIVE WARRANTY SERVICE

**PRODUCT REGISTRATION**

Register this product NOW to receive 1-year warranty protection

[www.AcuRite.com](http://www.AcuRite.com)

Have questions about product setup or operation? We're here to help!

24/7 Support: [www.acurite.com](http://www.acurite.com)

- › Product Setup & Demo Videos
- › Product Manuals
- › Frequently Asked Questions
- › Register your Product
- › Support Forum
- › Submit Feedback & Ideas