

*We Think of Human,  
Environment and Future*

# Coway

## Water Filtration System P-07FR/RV/U/UV

- This Water Filtration System is for domestic use. It can not be used in overseas where the power rate is different.
- For the right operation of Coway Water Filtration System read this manual.



**Coway Co., Ltd.**

The Letter of Guarantee is enclosed here with this Coway product realizing "Quality is the best policy".





# FEATURES



# DEAR CUSTOMERS



## » Coway Water Filtration System has differentiated function.

- 1 Undersink type**  
User can get the purified water by just opening the faucet.


- 2 Self Filter Check**  
The electric filter change indicator reminds user when to change the filter.


- 3 Auto Flushing(Only P-07FR/RV)**  
If the system is in use for an extended period of time, the filter can be protected by the auto flushing feature.


- 4 Innovative Tankless Water Filtration System**  
Coway invented a tankless water filtration system which is very space-efficient.


- 5 Safer Structure**  
The risk of water leakage is diminished by using an electronic valve.


- 6 Preventing Secondary Pollution**  
Due to the tankless system, secondary-source pollution, which sometimes occurs inside of tanks, is eliminated.


- 7 UV Lamp Filter(Only P-07FRV/UV)**  
Users can get the purified water by Ultra Violet.



First of all, we would like to thank you very much for purchasing this Coway water filtration system. This product is superior to the ones in the past in function and we believe that it will provide you with cleaner and healthier water. We would like to recommend you to read this User's Manual carefully for proper operation and maintenance and keep this manual well together with the warranty. This user's manual could solve your problem so that you can easily fix by yourself in just a few minutes.

This system (P-07FR/RV) conforms to NSF/ANSI 58 for the reduction of Pentavalent Arsenic, Barium, Cadmium, Mercury, Selenium, Radium 226/228, Trivalent chromium, Hexavalent chromium, Lead, Nitrate/Nitrite as verified and substantiated by test data. This system (P-07FR/RV/U/UV) conforms to NSF/ANSI 42, 53 for the reduction of Chlorine and VOC as verified and substantiated by test data. This system is acceptable for treatment for influent concentrations of no more than 27mg/L nitrate and 3mg/L nitrite in combination measured as N and is certified for nitrate/ nitrite reduction only for water supplies with a pressure of 280kPa(40psig) or greater.

## Contents

For information	How to use
Safety Information ..... 04	Please Keep in Mind ..... 12
– Electricity Safety ..... 04	Preparations ..... 13
– Installation Safety ..... 06	Operation Part/Indication Part ..... 14
– Operation Safety ..... 07	How to Operate ..... 17
– Others ..... 08	– To drink room water ..... 17
Names of Each Part ..... 09	
Water Filtration Process ..... 10	

Installation and cleaning	Others
Installing Method ..... 18	Before Asking A/S ..... 25
Filter Replacement And Daily Check ... 20	Specification ..... 26
Filter Replacement Method ..... 22	Water Flow Diagram ..... 27
	Warranty Information ..... 29

※ Please keep the manual near your sight and in the reach of your hand



# SAFETY INFORMATION



## Be careful to keep this safety information.

Please read this information to prevent property loss and ensure your safety.



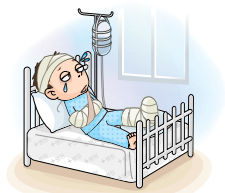
**Danger** If not observed, serious injury or even death could occur.



**Warning** If not observed, serious injury or property damage could occur.



**Caution** If not observed, slight injury or property damage could occur.

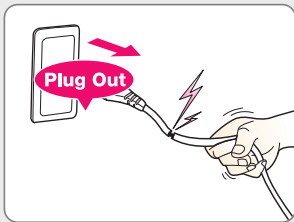


## Electricity Safety



Do not use a damaged power cord or plug, and loose outlet.

Electrical shock or fire may occur as a result.



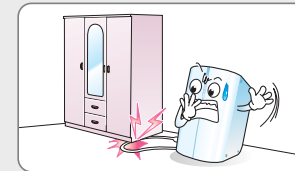
Do not unplug by pulling the cord or handle the plug with wet hands.

Electrical shock or fire may occur as a result.



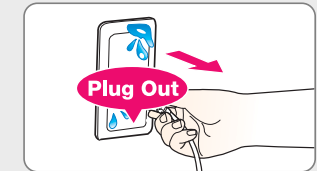
Do not run the power cord under a heavy object to prevent it from being damaged.

Electrical shock or fire may occur as a result.



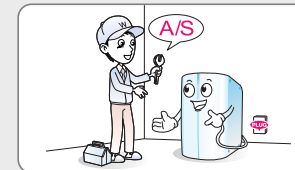
If the cord or plug is wet, unplug the unit and let it completely dry before subsequent use.

Electrical shock or fire may occur as a result.



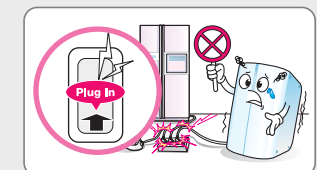
Unplug the unit before repair, inspection, or replacement.

Electrical shock may occur as a result.



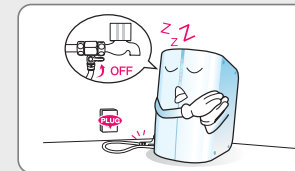
Do not plug into an outlet or power strip that is being used by several other appliances. Use a separate outlet for the unit.

Fire may occur as a result.



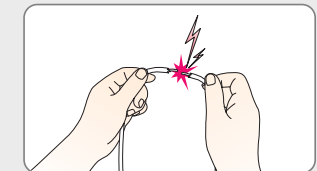
Close the main water supply valve and unplug the power cord when not using for a long time.

Electrical shock or fire may occur as a result.



Do not attempt to repair the power cord.

Electrical shock or fire may occur as a result.





# SAFETY INFORMATION

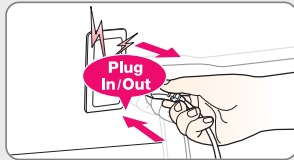
Please read this information to prevent property loss and ensure your safety.



## Electricity Safety

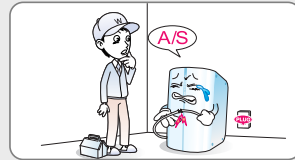
- ⚠ Do not repeatedly plug and unplug the unit from the electrical outlet.

Electrical shock or fire may occur as a result.



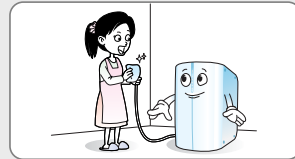
- ⚠ Do not use if the cord appears to be damaged. Please ask Customer Service to replace the cord.

Electrical shock or fire may occur as a result.



- ⚠ Remove any dust or water if it's on the plug. Never use Benzene or gasoline to clean the plug.

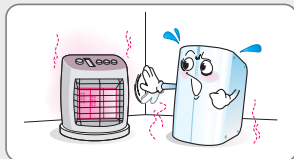
Electrical shock or fire may occur as a result.



## Installation Safety

- ⚠ Do not install the unit near heaters.

Electrical shock or fire may occur as a result.



- ⚠ Use or place the unit on a level area and do not apply force to the unit.

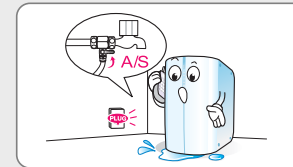
Injury to the user or damage to the unit could result.



## Operation Safety

- ⚠ Close the main water supply valve and plug out, then call to A/S center in the case of any water leakage from the product.

Electrical shock may occur as a result.



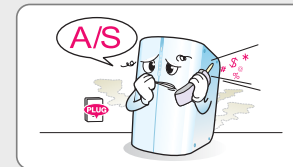
- ⚠ Do not place dishes or containers of water, drugs, food, or small metal objects on top of the product.

Danger of electric shock, fire, or product damage if water or alien substances get into the product.



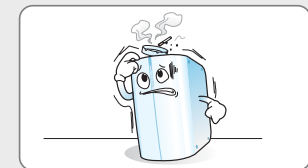
- ⚠ Immediately unplug and call the Customer Service center if the unit makes a strange noise or odd smell.

Fire may occur as a result.



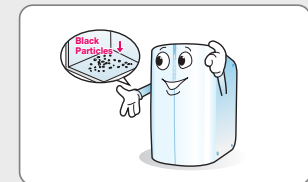
- ⚠ Do not put a candle, cigarette or any other flammable object on it.

Fire may occur as a result.



- ⚠ When moving the product or replacing the fine post-carbon filter there may be black residue particles under the tank bottom stored water may get contaminated.

Certain level of fine dust may be introduced to silver coated activated carbon that is used to the fine post-carbon filter to enhance the taste of water; thus, it is harmless to human body.





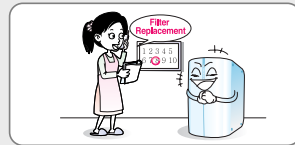
## SAFETY INFORMATION

Please read this information to prevent property loss and ensure your safety.



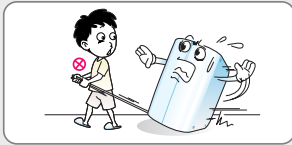
### Operation Safety

- ⚠ Periodical filter replacement is prerequisite for getting clean water.  
In case filters are overused, the performance of filters is deteriorate.

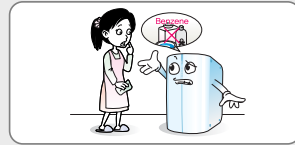


### Others

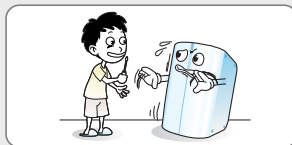
- ⚠ Do not carry the unit by its power cord.  
Electrical shock or fire may occur as a result.



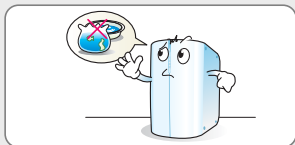
- ⚠ Do not spray water or wipe them with benzene when cleaning.  
Electrical shock or fire may occur as a result.



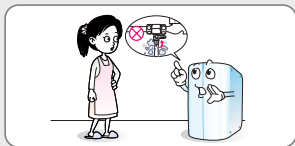
- ⚠ Do not repair, disassemble, or modify.  
Electrical shock or fire may occur as a result.



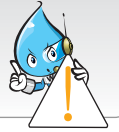
- ⚠ Do not use filtered water for the water exchange of an aquarium or a fishbowl.  
Certain fish may die as a result.



- ⚠ The filtration system installation shall comply with state and local laws and regulations. Do not use with water that is microbiologically unsafe or of unknown quality without adequate disinfection before or after the system.

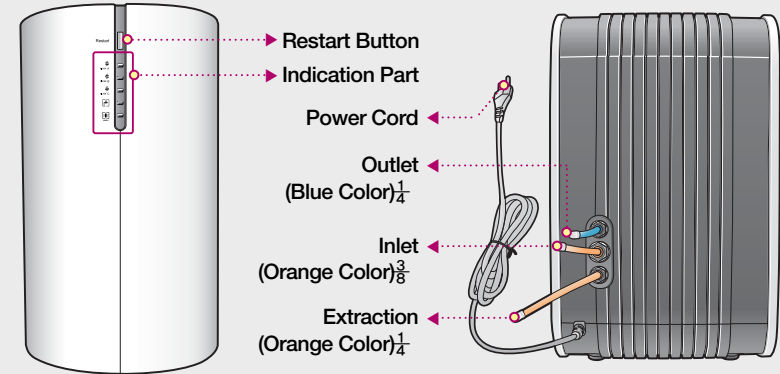


## NAMES OF EACH PART



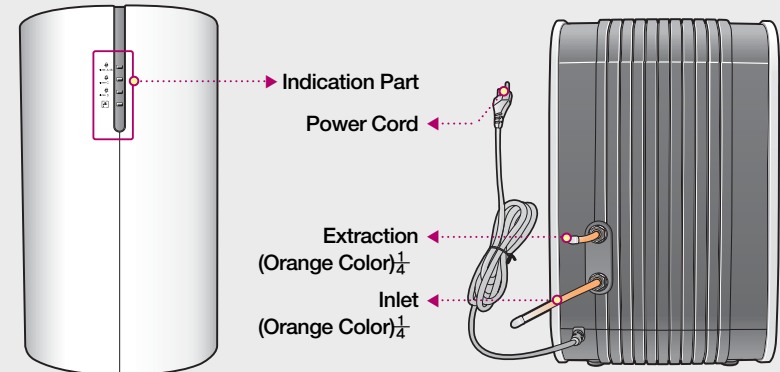
### Front/Rear

#### ► P-07FR/RV



### Front/Rear

#### ► P-07FU/UV



※ Check fitting and tubings are the parts that can be replaced.



# WATER FILTRATION PROCESS



## ▶ The water filtering system (P-07FR/RV)

### ● NEO-SENSE FILTER

Reduces various foreign bodies that come from the feed water pipe such as dirt, sand, rust particles, VOCs and chlorine.

### ● MEMBRANE FILTER(RO)

The RO(Reverse Osmosis) Membrane filter reduces Pentavalent Arsenic, Barium, Cadmium, Mercury, Selenium, Radium 226/228, Trivalent chromium, Hexavalent chromium, Lead, Nitrate/Nitrite. The influent water to the system shall include the following characteristics.

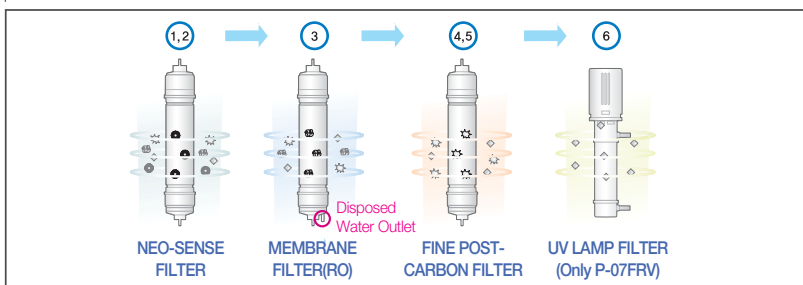
- No organic solvents · Chlorine : < 2 ppm · pH : 7-8 · Temperature : 41-95 °F (5-35 °C)
- Iron : < 2 ppm · Turbidity : < 1 NTU · Hardness : < 1000 mg/L

### ● FINE POST-CARBON FILTER

It is a composite filter. The post-carbon filter removes odor of water and improve water taste. And the filter sensor eliminates the dust particles in the post-carbon filter.

### ● UV LAMP FILTER(Only P-07FRV)

Reduces e.coli, coliform and other bacteria as well as viruses, yeasts, cryptosporidium, and giardia.



### ⚠ WARNING

The disposed water shall be used for cleaning a toilet, a house, dishes, and as water for sundry uses. However, please do not use it for potable water or cooking water.



This system conforms to NSF/ANSI 58 for the reduction of Pentavalent Arsenic, Barium, Cadmium, Mercury, Selenium, Radium 226/228, Trivalent chromium, Hexavalent chromium, Lead, Nitrate/Nitrite as verified and substantiated by test data.

## ▶ The water filtering system (P-07FU/UV)

### ● PLUS-SEDIMENT FILTER

Using a step-by-step filtration method per pore, this filter effectively reduces various foreign bodies that come from the supplying water pipe such as bits of rust. The Plus-Sediment filter vastly reduces dirt, sand, rust particles, and other sediments.

### ● PRE-CARBON FILTER

The activated carbon filter reduces chlorine, fluoride, odor, tri-halo methane, gas additive MTBE, and organic pollutants such as pesticides, EDB, PCB, benzene, and TCE.

### ● POST-CARBON FILTER

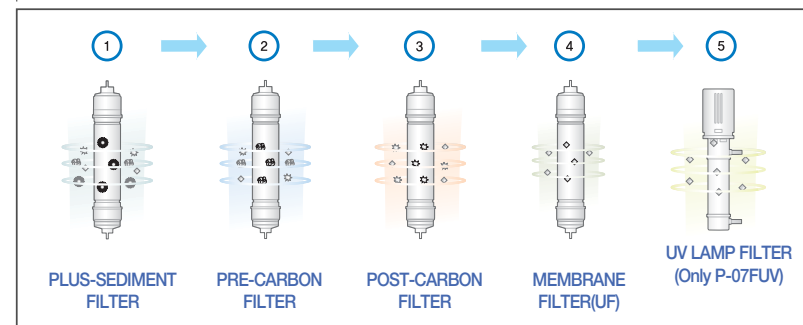
Made using coconut, this filter reduces unpleasant smell from water and enhances water flavor.

### ● MEMBRANE FILTER(UF)

UF Membrane filter reduces the foreign materials and water borne microorganisms.

### ● UV LAMP FILTER(Only P-07FUV)

Reduces e.coli, coliform and other bacteria as well as viruses, yeasts, cryptosporidium, and giardia.



### ⚠ WARNING

The Ultra Filtration phenomenon has been applied to Coway filtration system, where a UF filter with pores of 0.01µm is used to filter water. The components of our water filtration system are as followed:



## PLEASE KEEP IN MIND

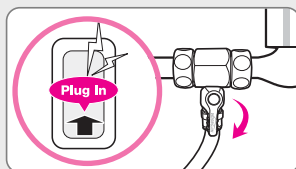
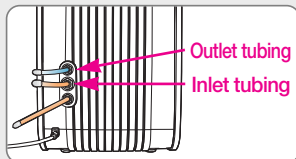
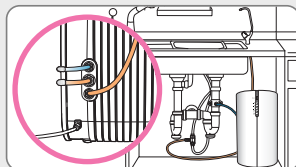
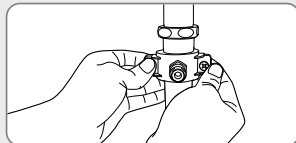
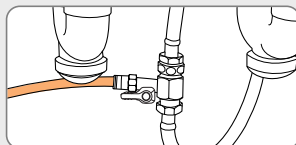
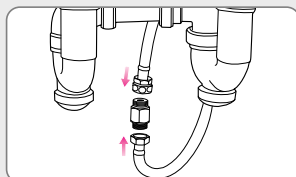


## PREPARATIONS



### ► The summary for the proper installation of the water filtration system.

- 1 Wind the teflon tape on the adaptor and fit it to the pipe.  
 ⚠ Shall install the adaptor with connector on the cold water pipe.  
 Then, connect the faucet with the adaptor.
- 2 Connect orange tubing with the connector on the adaptor.  
 ⚠ Flush water through each filter at least 5 minutes before connection.
- 3 Make a hole on the drain pipe and install the drain clamp on the hole.
- 4 Connect the extraction fitting to the faucet with a tube.
- 5 Connect the orange colored inlet tubing for the feed water with the cold water pipe. Extend the blue color outlet tubing to where the drain is.
- 6 Connect it to voltage rating that matches it on the rating plate. Then, open the feed valve to supply water to the filtration system.



### ► Please check before use

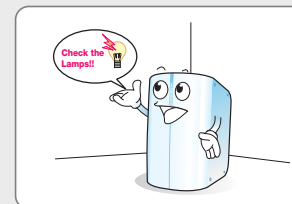
⚠ Connect the power to the voltage rating that matches it on the rating plate.

Then, open the feed valve to supply water to the filtration system.



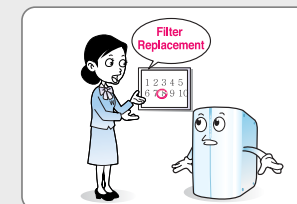
#### ■ When the lamp on the indication parts are turned out

When the lamp on the indication parts are turned out please check the reason for break of electric supply in case of electricity failure or other conditions.



#### ■ Regular filter change

The regular filter change is very important to have clean water. The filter after life is ended may degrade the performance. Thus, do not miss the time for the filter change.



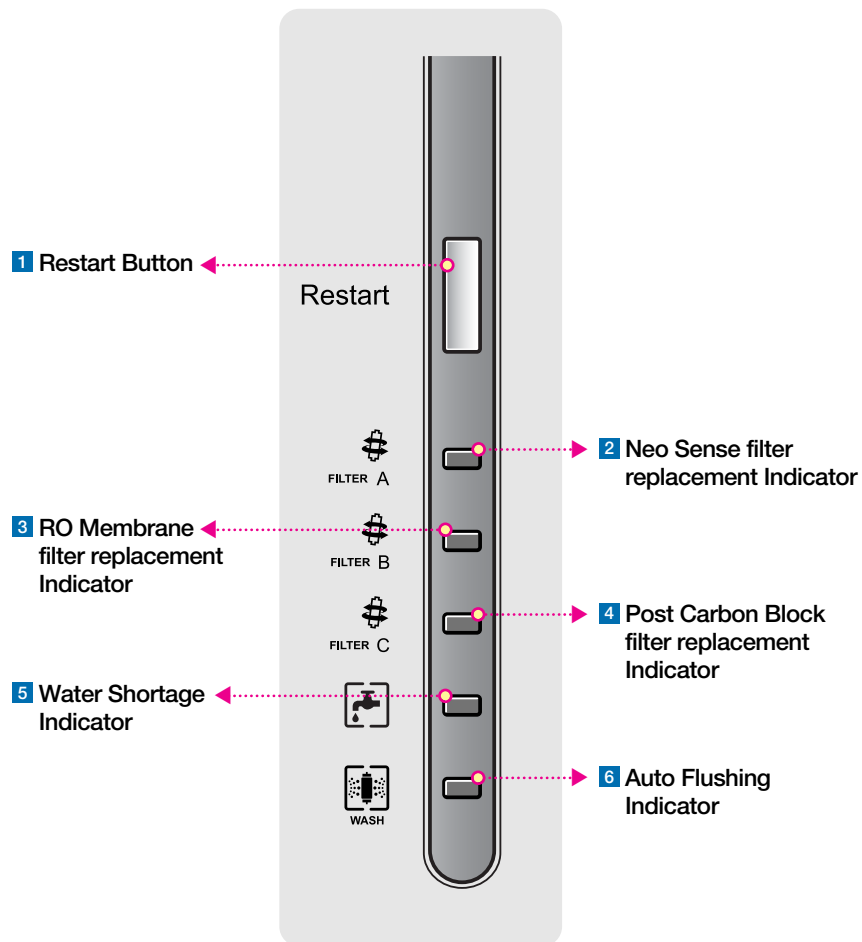
**TIP** When not using for a long time please lock the main water supply valve and plug out the power cord.





# OPERATION PART /INDICATION PART



## ▶ Operation Part/Indication Part (P-07FR/RV)



<p>Restart </p> <p><b>1 Restart Button</b></p> <p>For normal operation mode, push the Restart Button.</p>	<p> <b>2 Neo Sense filter replacement Indicator</b></p> <p>The Filter lights up when a Neo Sense filter replacement is needed. Change the filter when the time of incoming signal on.</p>
<p> <b>3 RO Membrane filter replacement Indicator</b></p> <p>The light lights up when a Membrane(RO) filter replacement is needed. Change the filter when the time of incoming signal on .</p>	<p> <b>4 Post Carbon Block filter replacement Indicator</b></p> <p>The light lights up when a Post Carbon Block filter replacement is needed. Change the filter when the time of incoming signal on .</p>
<p> <b>5 Water Shortage Indicator</b></p> <p>In case of water shortage, the water shortage LED lights up. Check the water supply valve.</p>	<p> <b>6 Auto Flushing Indicator</b></p> <p>When starting auto flushing the indicator lamps on.</p>

※ The "Water Shortage Indicator" and "Wash" lights up when a UV Lamp filter replacement is needed. Change the filter when the time of incoming signal on.





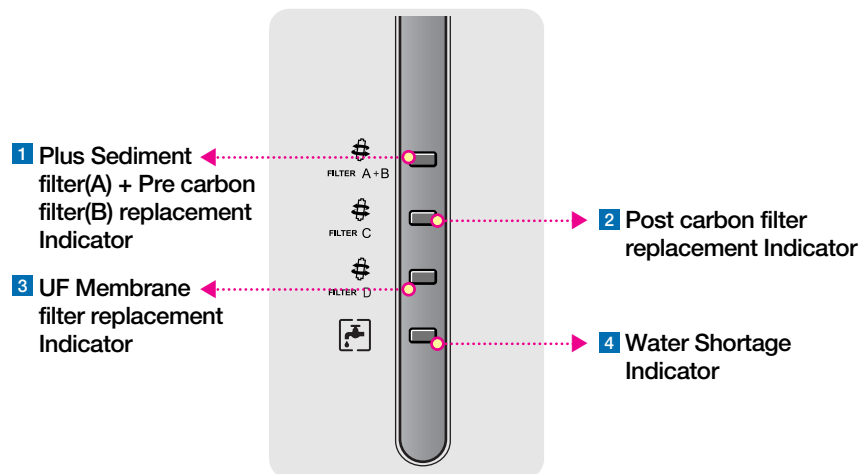
## OPERATION PART /INDICATION PART



## HOW TO OPERATE



### ▶ Operation Part/Indication Part (P-07FU/UV)



FILTER A+B

#### 1 Plus Sediment filter(A) + Pre carbon filter(B) replacement Indicator

The light lights up when Plus Sediment filter and Pre carbon filter replacement are needed. Change the filter when the time of incoming signal on.



FILTER C

#### 2 Post carbon filter replacement Indicator

The light lights up when a Post carbon filter replacement is needed. Change the filter when the time of incoming signal on.



FILTER D

#### 3 UF Membrane filter replacement Indicator

The light lights up when a UF Membrane filter replacement is needed. Change the filter when the time of incoming signal on.



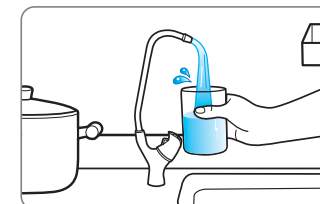
#### 4 Water Shortage Indicator

In case of water shortage, the water shortage LED lights up.

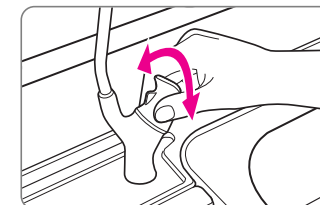
※ The "Water Shortage Indicator" lights up when a UV Lamp filter replacement is needed. Change the filter when the time of incoming signal on.

### ▶ To drink room water

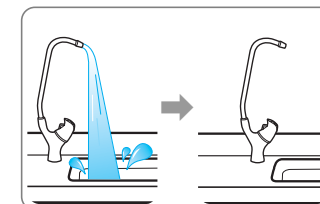
- 1 Put the extraction pipe in the desired position and place the cup under the extraction faucet to collect the water.



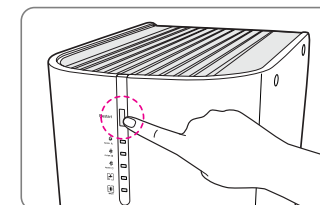
- 2 Turn the faucet on and off depending on desired use of filtered water.



- 3 Water extraction automatically stops after eight minutes to prevent too much use of water or overflowing around the product caused by user's carelessness. After repeating for four cycles, this device will auto flush and then shut off. (Only P-07FR/RV)



- 4 If the system does not work when the faucet is opened, push the restart button for one seconds to restart extraction. (Only P-07FR/RV)



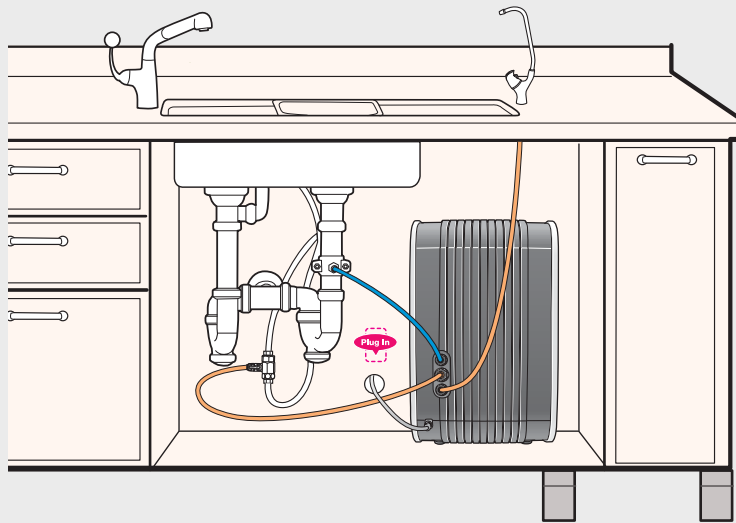
**TIP** The influent water should not include any organic solvents because they may damage RO membrane polymer and may decrease the performance of RO membrane.



# INSTALLING METHOD



▶ Follow the instruction for installation(P-07FR/RV)

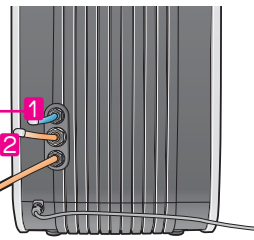


- Connect the blue color outlet tubing **1** to the drain clamp. Connect the inlet tubing **2** to the tap water supplying pipe. Connect the Extraction tubing **3** to the faucet.

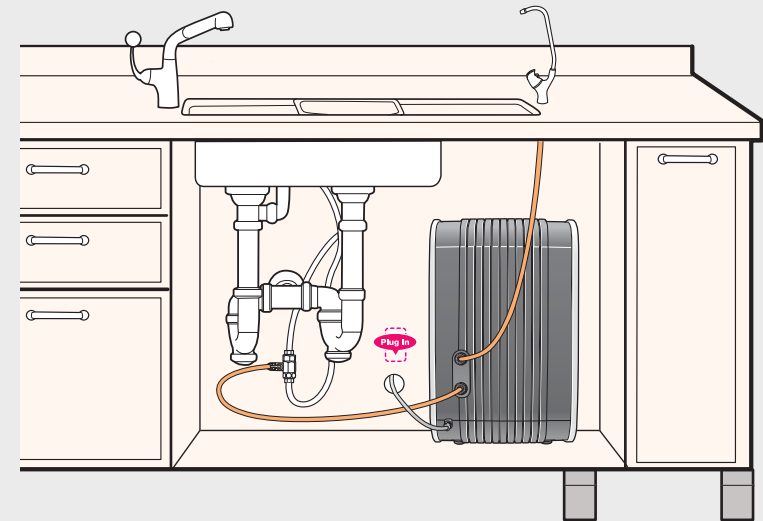
Outlet tubing (Blue Color)

Inlet tubing (Orange Color)

Extraction tubing (Orange Color)



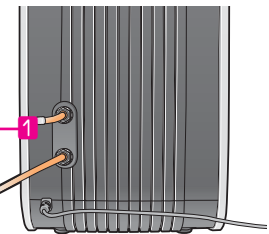
▶ Follow the instruction for installation(P-07FU/UV)



- Connect the orange color Extraction tubing **1** to the faucet. Connect the Inlet tubing **2** to the tap water supplying pipe.

Extraction tubing (Orange Color)

Inlet tubing (Orange)





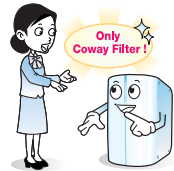
# FILTER REPLACEMENT AND DAILY CHECK



## ▶ Filter Replacement

### ■ Filter

The vitality of product is the filter. The fraudulent filters or missing time for filter change may degrade the performance and so interrupt the filtration.



### ■ Estimated Time of Filter Replacement

If the filter is not regularly replaced, it may degrade the water quality from the product. The filter change cycle may vary within the range of expected replacement cycle depending on the feed water quality.

※ The period for the filter exchange is made based on 10L use in a day for house use (4 people based) and 20L use for business.

#### ▶ P-07FR/RV

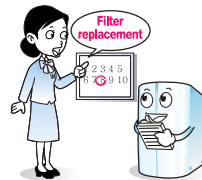
Part No.	Names of Filter	Usable Period
	Neo-Sense Filter	6 months
	Membrane Filter(RO)	24 months
	Fine Post-Carbon Filter	12 months

#### ▶ P-07FU/UV

Part No.	Names of Filter	Usable Period
	Plus-Sediment Filter	6 months
	Pre-Carbon Filter	6 months
	Post-Carbon Filter	12 months
	Membrane Filter(UF)	8 months



- This reverse osmosis system contains a replacement component critical to the efficiency of the system. Replacement of the reverse osmosis component should be one with identical specifications, as defined by the manufacturer, to assure the same efficiency and contaminant reduction performance.
- This reverse osmosis system contains a replacement treatment component critical for the effective reduction of total dissolved solids, and that the product water shall be tested periodically to verify that the system is performing properly.



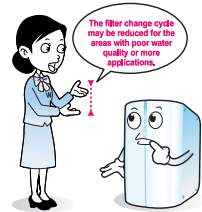
### ■ Estimated Time of Filter Replacement

The filter change cycle described above is not the filter quality warranty period but the expected cycle that the filter shows its original performance. (based on the tap water.)

※ The filter change cycle may be reduced for the areas with poor water quality or more applications.



The product water should be tested every 6 months to ensure that the contaminants are being reduced effectively. Please contact your local dealer or Coway to initiate this service.



## ▶ Regular Check

For safe operation, we recommend the frequent check on the product. Keep the optimum status of the product by frequent check for the following items.

### ■ Power

- Does the indication part repeat ON and OFF when you touch the power cord When the power is connected?
- Is a part of power cord hotter than usual?
- Is a part of power cord distorted, discolored or damaged?

▲ For any event above, immediately stop the operation and contact your nearest Coway Customer Service Center.

### ■ Indication Part

- Does any lamp on the indication part abnormally flicker?

For the abnormal flickering of lamp, immediately Contact your nearest Coway Customer Service Center.

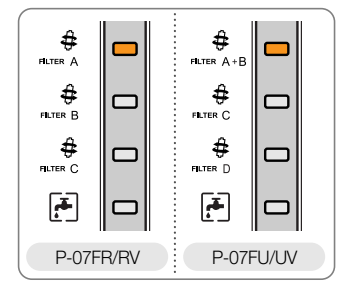


# FILTER REPLACEMENT METHOD

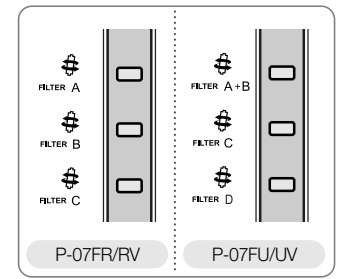


## ▶ Please replace filter

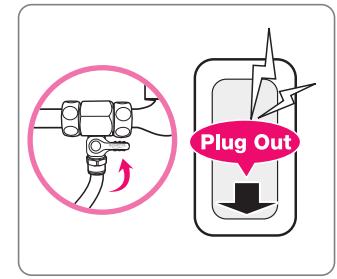
**1** Filter replacement time is indicated when the corresponding LED of filter flickers in window display.



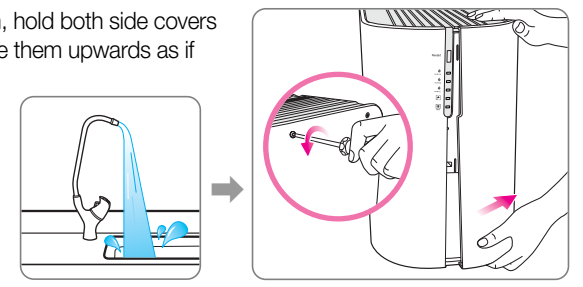
**2** Each of A, B and C respectively represents Neo-sense filter, Membrane filter(RO), Fine Post-carbon filter.(P-07FR/RV)  
Each of A+B, C and D respectively Represents Plus-sediment filter+ Pre carbon Filter, Post carbon filter and UF Membrane filter.



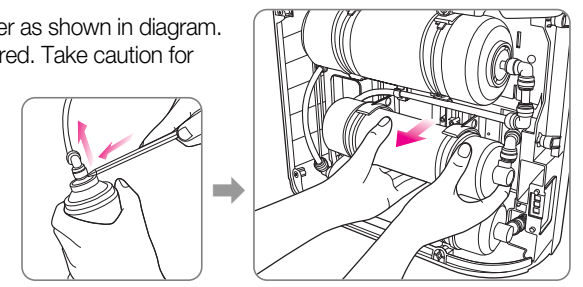
**3** Close water lead-in valve and pull out plug.



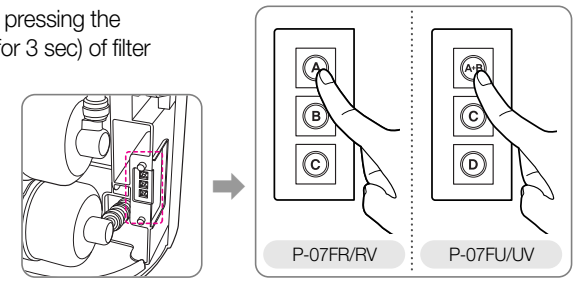
**4** Unfasten screws. Then, hold both side covers at the bottom and force them upwards as if pushing up to remove them from the main body.



**5** Remove fitting from filter as shown in diagram. Replace filters as required. Take caution for safety at all times.



**6** Initialize filter setting by pressing the corresponding button(for 3 sec) of filter among the filter reset buttons located at the back of the front panel.

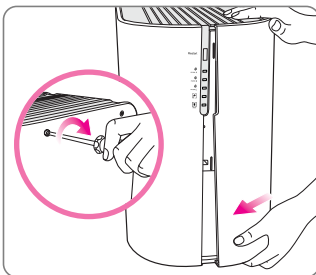




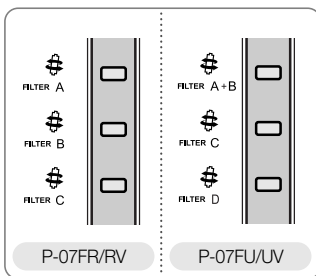
## FILTER REPLACEMENT METHOD

### ▶ Please replace filter

- 7 Insert both side covers and fasten screws.



- 8 Check for normal operation of filter replacement parts in window display.



- When LED to indicate filter replacement is turned on, users must not attempt a replacing filters on their own. Make sure to inquire A/S center.
- When the filter is used up to 80% of its capacity, corresponding LED blinks. When the filter is completely used up, its LED lights up and the alarm rings.
- If you push the Reset button for 1 second, the relative filter LED lights off and the buzzer goes off.



## BEFORE ASKING A/S



### ▶ Check the followings before asking A/S.

The product may not properly work due to the reasons except the breakdown because you are not accustomed to how to operate or any negligible reasons. In those cases, check the followings, and you can solve the simple troubles without the help from the customer service center. If the trouble continues after you check the followings, contact your nearest Customer Service Center.

Problem	Check Items	Solutions
<b>The water tastes weird</b>	• Did you use the filter system for too long?	Request filter change.
	• Is it about time to change the filter?	Request filter change.
<b>The water is flowing slower.</b>	• Is it about time to change the filter?	Request filter change.
	• Did you lock the water supply valve?	Open the water supply valve.
<b>Water does not come out, or the fixed quantity has changed</b>	• Did the temperature of the water drop suddenly?	When the temperature drops, the amount of water filtered decreases.
	• Is it about time to change the filter?	Request filter change.
	• Is the water supply valve closed, or the water supply cut?	Open the water supply valve.
	• Is the hose bent?	Straighten the hose.
<b>All functions suddenly stop during operation.</b>	• Is the water inlet hose too long?	Shorten the water inlet hose to 5m or less.
	• Is the water being supplied properly?	Check the water supply valve.
	• Is the power turned on?	Connect the power to the voltage rating that matches it on the rating plate.
	• Is room water overflowing or leaking?	Request A/S.

A/S Phone No : 213-480-1600



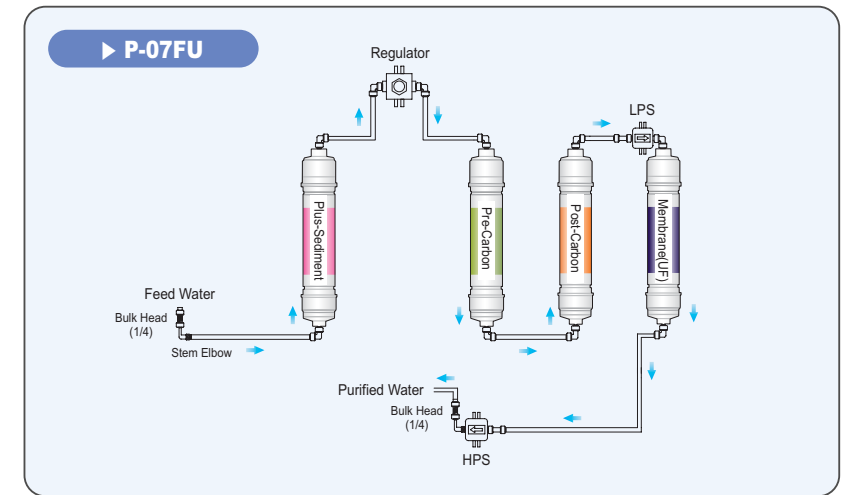
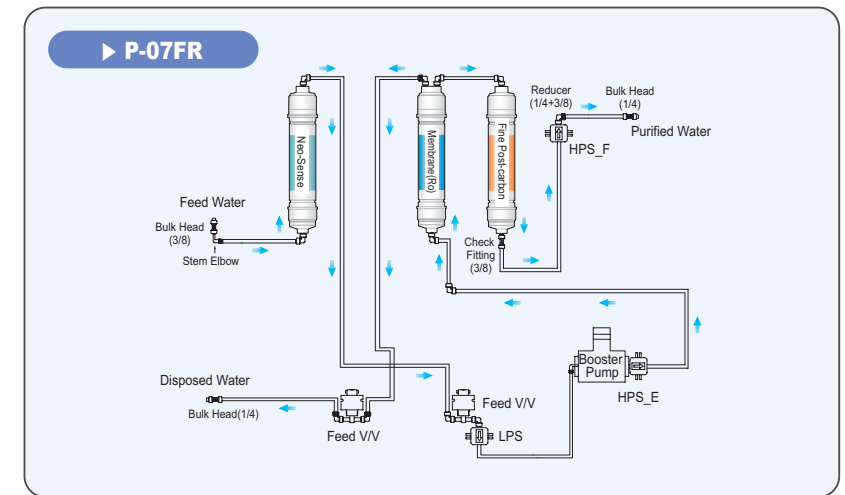
## SPECIFICATION

Product	Coway Water Filtration system			
Model	P-07FR	P-07FRV	P-07FU	P-07FUV
Filtration method	Reverse Osmosis(RO)	RO&UV	UF	UF&UV
Power Supply	Voltage rating that matches it on the rating plate.			
Dimension	240(W) X 410(D) X 400(H)mm <9.4(W) X 16.1(D) X 15.7(H)inch>			
Net Weight	12kg(26.5 lb)		6.5kg(14.3 lb)	
Working Pressure	0.14-0.83MPa(20-120psi)		0.10-0.83MPa(15-120psi)	
Working Temperature	41-95°F(5-35°C)			
Production Rate	gal/day	gal/day	.	.
Rated Service Flow	.	.	gal/min	gal/min

- ※ Without any prior notice, all or parts of the product are subject to change for the purpose of improving the performance of the product.
- ※ Efficiency rating means the percentage of the influent water to the system that is available to the user as reverse osmosis treated water under operating conditions that approximate typical daily usage.
- ※ Recovery rating means the percentage of the influent water to the membrane portion of the system that is available to the user as reverse osmosis treated water when the system is operated without a storage tank or when the storage tank is by passed.



## WATER FLOW DIAGRAM





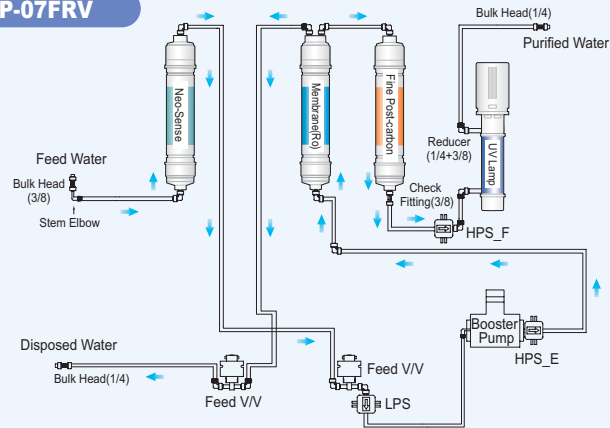
# WATER FLOW DIAGRAM



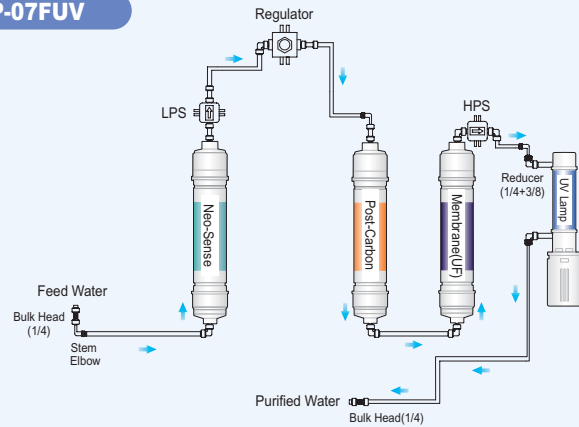
# WARRANTY INFORMATION



## ▶ P-07FRV



## ▶ P-07FUV



Coway

## Product Guarantee

1. Parts and components shall be replaced free of charge within the guarantee period if the defects occur due to manufacturing defects in normal operation.
2. Contact us in case of breakdown.
3. In the following cases, repair work shall be charged even within the guarantee period.
  - ▶ Breakdown caused by careless operation or unreasonable repair and renovation.
  - ▶ Breakdown caused by nonperformance of the instructions specified in the manual.
4. Even after the expiration of guarantee period, it is possible to apply for charged repair.
5. Present this Letter of Guarantee whenever repair is needed.
6. This Letter of Guarantee is valid only in domestic where you buy this product.
7. Keep this Guarantee carefully as it is not re-issued.

Model	P-07FR/RV/U/UV	
Serial No.	1 year	
Date of Purchase		
Guarantee Period	From	To
Customer's Address		
Customer's Name	Tel.	

Please contact our customer's service center in case you are not satisfied with our A/S service.

- Nationwide A/S Call : 213-480-1600
- Nationwide Periodical Inspection and Filter Replacement Call : 213-480-1600
- Customer Counseling Center Call : 213-480-1600 Fax :

☞ In case any other filters or parts which are not genuine products of we are used, we is not responsible for any problems related to water quality.

Coway Co., Ltd  
 658, Yugu-Ri, Yugu-Eub, Gongju-Si, Choongchungnam-Do, Korea  
 Tel : 82-41-850-7879 Fax : 82-41-841-7816  
 www.coway.com



# MEMO



A large rectangular area with a light beige background, filled with horizontal dotted lines for writing.

A large rectangular area with a light beige background, filled with horizontal dotted lines for writing. At the bottom right, there is an illustration of a dining table with a blue and white striped tablecloth, two blue chairs, a plate of fruit, and a vase with yellow flowers. A window with a view of a green landscape is visible in the background.