



*Culligan
Medallist Series™
Water
Softener*

“Hey Culligan Man!”®

- Local Water Expertise
- Trusted Leader for Over 65 Years
- Certified Sales and Service Professionals
- 100% Satisfaction Guarantee
- Full Service (salt delivery, filter changes and more)
- Affordable Water Solutions for Home and Business
- Complimentary In-Home Water Analysis

Water Softeners • Water Filters

Drinking Water Systems • Delivered Bottled Water



Trust The Water Experts®



Soft Water Means Better Living.

The Benefits of a Culligan Soft Water Home

Dissolved minerals in the hard water that enters your house form a scale that makes water heaters and other water-using appliances work harder than necessary. A Culligan Medallist Series[®] Water Softener conditions the water as soon as it enters your home and delivers soft Culligan water throughout the entire house. Ask your Culligan Man[®] to inspect your appliances for any hard water buildup or damage.

Bathrooms:

- Save time and money with less cleaning
- Prevent rust stains and dirty fixtures

Cleaner Everything:

- Brighter, whiter and softer bed linens and clothing

Culligan[®] Water Softener System

- Reduce damaging scale buildup in your water heater, humidifier and the plumbing throughout your entire house.

Laundry Room:

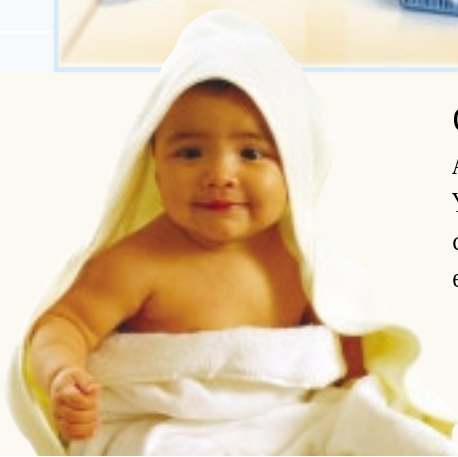
- Whiter, brighter clothes
- Reduce rust stains

Kitchen:

- Spot-free dishes, flatware, glassware, and fixtures.

Culligan Softer Water Saves Time And Money!

A Culligan water softener removes materials that make your water hard and cause scaly buildup. You'll spend less on soaps, detergents, lotions, electricity, and gas for your water heater and dramatically extend the life of your water using appliances! With Culligan soft water, you can also enjoy soft, smooth skin, shinier hair, fluffier laundry and easier household cleaning.



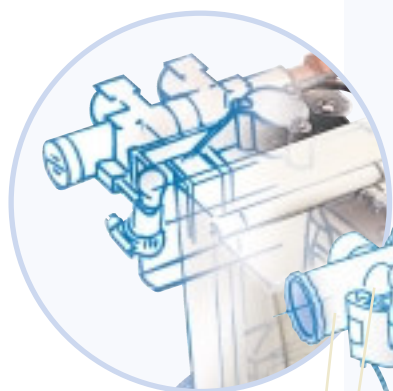


Exclusive Culligan Medallist Series[®] Design and Technology

The *Culligan Medallist Series* Water Softeners are built with state-of-the-art features to deliver the finest conditioned water to your entire family.

Control valve is available in 3/4" with the Culligan Medallist Series[®] and 1" with the Culligan Medallist Plus Series[®].

Fingertip Programming
The low voltage, fully programmable Accusoft[®] Microprocessor offers easy data entry performance options that can be set at the touch of a button, to meet individual needs. All programming is safe from most power interruptions and surges.



Bypass the System
The Cul-Flo-Valv[®] allows you to bypass the system for uses not requiring softened water—such as watering the lawn.

Save Salt and Water
The Culligan meter option monitors daily water use and activates regeneration only when needed, saving you salt and water.

Service-free Operation
Exclusive, non-corrosive 5-cycle motorized control valve directs water flow during service and regeneration cycles.

Maximum Efficiency
Cullex[®] resin provides maximum water softening capacity, stability and long life.

Soft Water for Everyone
The Guest-Cycle[®] recharge feature provides an extra supply of conditioned water when there are more people than normal in the home.

Longer Life
A Dubl-Safe[®] brine refill control provides assured shut-off and corrosion-proof components for longer life.

System Protection
A non-corrosive brine plate assists in dissolving salt and protects the system from salt impurities.

Designed for Durable Service
The sturdy, filament-wound exterior, and smooth, non-permeable inner tank and shell is listed with the National Sanitation Foundation.

Efficient Operation
High grade quartz underbedding evenly distributes water to maximize flow rates.



Outdoor Culligan Medallist Series Softener

The Outdoor Culligan Medallist Series[®] Softener is certified^{*} for outdoor installations. Wind, rain, even annoying garden-variety “wildlife” won’t stop you from all the benefits of soft water.

- 3/4" or 1" Control Valve.
- Soft-Minder[®] Meter Option that monitors daily water use and activates regeneration when needed saving salt and water.
- Comes in a variety of volume capacities
- Cul-Flo-Valv[®] Bypass Valve
- Dubl-Safe Brine Refill Control
- Accusoft[®] Microprocessor

* Certified by Underwriters Lab



Trust The Water Experts®

Quality products
and services you
can count on.

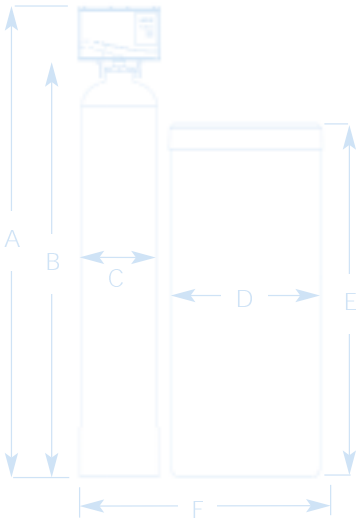
For over 65 years, Culligan has led the water treatment industry in innovation and service. Culligan products are produced with world-class quality backed by solid warranties* and serviced by factory trained technicians.

Your local, reliable Culligan dealer will perform a complimentary, no obligation water analysis and help you chose the system that is just right for your home and family. Now that's service!

Why Millions Trust Culligan to Deliver Better Water

- ✓ All Culligan products are backed with a 100% Satisfaction Guarantee. If you're not completely satisfied within 30 days from the date of purchase, we'll refund your purchase price.
- ✓ Your local Culligan Man® has a full-line of quality water treatment products at affordable prices.
- ✓ We're ISO9001 certified. All assembly takes place under exacting world-class quality control.
- ✓ Culligan products possess the industry's most state-of-the-art features because we maintain our own extensive research and development facility and no other water treatment company holds as many patents.
- ✓ With over 1,100 dealers worldwide and more than 75 countries globally, a *Culligan Man* is just around the corner to make sure you receive the Culligan water you've come to enjoy.
- ✓ Your local *Culligan Man* offers salt delivery, filter changes, financing and more, making Culligan a full-service water treatment company.

The Culligan Medallist Series® Water Softener complies with industry specifications, is efficiency rated, and will minimize the amount of regenerant brine and water used in operation.



Culligan Medallist Series™ Water Softeners

Product Specifications

Model	A	B	C	D	E	F
Culligan Medallist Series 8 x 44 in.	51 in.	44 in.	8 in.	16 in. with 250 lb. capacity brine tank or 18 in. with 375 lb. capacity brine tank	43 in.	32 in.
Culligan Medallist Series 10 x 40 in.	49 in.	40 in.	10 in.	18 in. with 375 lb. capacity brine tank	43 in.	36 in.
Culligan Medallist Series 10 x 54 in.	63 in.	54 in.	10 in.	18 in. with 375 lb. capacity brine tank	43 in.	36 in.
Culligan Medallist Series 12 x 52 in.	61 in.	52 in.	12 in.	18 in. with 375 lb. capacity brine tank	43 in.	36 in.

"Hey Culligan Man!"



www.culligan.com™
1-800-CULLIGAN
© 2003 Culligan International Co.
Printed in USA (3/03)
MOORE PART NO. 46987



ANSI/NSF Standard 44
Water Softener
81WN



Water Quality
Association



ISO 9001
Certification



Underwriters
Lab



Good
Housekeeping



Culligan, Hey Culligan Man, Culligan Man, Culligan Medallist Series, Accusoft, Culex, Dubl-Safe, Guest Cycle, Cul-Flo-Valv, and www.culligan.com are trademarks of Culligan International Company.

*Warranty available separately



Culligan®

A solution to your outdoor softener installation.

Outdoor Culligan Medallist Series™ Water Softener

Exclusive Outdoor Culligan Medallist Series' Design Technology
The Outdoor Culligan Medallist Series Water Softener is built and certified for outdoor installations with state-of-the-art features to deliver the finest conditioned water to your entire family.

Water Resistant Enclosure
The water softener is certified by UL for outdoor installation

Bypass the System
Cul-Flo-Valv₈ bypass valve allows you to bypass the system for uses not requiring softened water—such as watering the lawn.

Service-free Operation
Exclusive, non-corrosive 5-cycle motorized control valve directs water flow during service and regeneration cycles.

Maximum Efficiency
Cullex₃ resin provides maximum water softening capacity, stability and long life.

Efficient Operation
High grade quartz underbedding evenly distributes water to maximize flow rates.



Fingertip Programming
The low voltage, fully programmable Accusoft₃ Microprocessor offers easy data entry performance options that can be set at the touch of a button, to meet individual needs. All programming is safe from most power interruptions and surges.

Soft Water for Everyone
The Guest-Cycle³ recharge feature provides an extra supply of conditioned water when there are more people than normal in the home.

Longer Life
A Dubl-Safe³ brine refill control provides assured shut-off and corrosion-proof components for longer life.

System Protection
A non-corrosive brine plate assists in dissolving salt and protects the system from salt impurities.

Designed for Durable Service
The sturdy, filament-wound exterior, and smooth, non-permeable inner tank and shell is listed with the NSF.

Save Salt and Water
The Culligan meter option monitors daily water use and activates regeneration only when needed, saving you salt and water.





When It's Built by Culligan, It's Built to Last.

For over 65 years, Culligan has led the water treatment industry in innovation and service. We offer the broadest product line, more than 200 patents, ISO 9001 certification, and operations in over 75 countries around the world. From manufacturing the finest products to delivering expert service to your doorstep, we're involved in every phase of your water treatment. Of course, Culligan products are built to last and are backed by solid warranties* and the most trained and experienced service technicians in the industry.

100% Satisfaction Guarantee

When you purchase a Culligan product, you are purchasing the finest water treatment product available in the world today. We are so certain of this fact that if you are dissatisfied with your Culligan product for any reason within 30 days of your purchase, Culligan will refund the purchase price.*

Solutions for Your Home and More

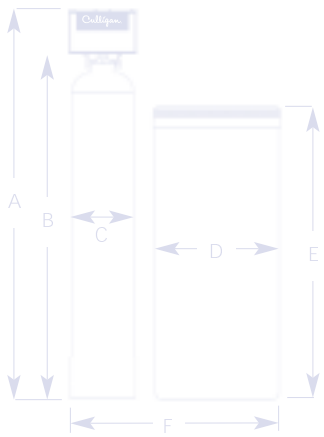
If you have questions or need assistance, your local Culligan Man[®] is a phone call away and ready to help. The *Culligan Man* can evaluate your water and recommend the most optimal filtration system. Call today and let one of our trained water technicians test your water. Feel good and live better with Culligan.

*Culligan will provide a copy of warranties upon request.

Outdoor Culligan Medallist Series™ Water Softeners

Product Specifications

Model	A	B	C	D	E	F
Culligan Medallist Series 8 x 44 in.	51 in.	44 in.	8 in.	16 in. with 250 lb. capacity brine tank or 18 in. with 375 lb. capacity brine tank	43 in.	32 in.
Culligan Medallist Series 10 x 40 in.	49 in.	40 in.	10 in.	18 in. with 375 lb. capacity brine tank	43 in.	36 in.
Culligan Medallist Series 10 x 54 in.	63 in.	54 in.	10 in.	18 in. with 375 lb. capacity brine tank	43 in.	36 in.



ANSI/NSF Standard 44
Water Softener 81WN



Water Quality
Association



ISO 9001
Certification



Good
Housekeeping



Water Softener



“Hey Culligan Man!”[®]

www.culligan.com

1-800-CULLIGAN

© 2002 Culligan International Co.

Printed in USA (10/02)

SL-0111

MOORE PART NO. 37159

The contaminants or other substances removed or reduced by this water treatment device are not necessarily in your water.

Products manufactured and marketed by Culligan International Company (Culligan) and its affiliates are protected by patents issued or pending in the United States and other countries. Culligan reserves the right to change the specifications referred to in this literature at any time, without prior notice.

Culligan, Hey Culligan Man, Culligan Man, Iron-Clear, Guest Cycle, Cul-Flo-Valv and www.culligan.com are trademarks of Culligan International Company.

The Good Housekeeping Seal applies to drinking water systems, softeners and whole-house filters.



Specifications

Culligan Medallist Series¹ Water Conditioners with Timeclock or Soft-Minder¹ Meter

	Medallist		Medallist Plus	
	8" Model	30 Model	45 Model	60 Model
Control Valve Type	3/4" 5-cycle Reinforced Thermoplastic	1" 5-cycle Reinforced Thermoplastic	1" 5-cycle Reinforced Thermoplastic	1" 5-cycle Reinforced Thermoplastic
Overall Conditioner Height	51 in. 1,295 mm	49 in. 1,245 mm	63 in. 1,600 mm	61 in. 1,549 mm
Media Tank Dimensions (Dia. x Ht.)	8 x 44 in. 203 x 1,118 mm	10 x 40 in. 254 x 1,016 mm	10 x 54 in. 254 x 1,372 mm	12 x 52 in. 305 x 1,321 mm
Salt Storage Tank Dimensions (Dia. x Ht.)	18 x 43 in. 457 x 1,092 mm	18 x 43 in. 457 x 1,092 mm	18 x 43 in. 457 x 1,092 mm	18 x 43 in. 457 x 1,092 mm
Exchange Media, Type & Quantity	Cullex [®] Media, 0.7 ft ³	Cullex Media, 1.0 ft ³	Cullex Media, 1.5 ft ³	Cullex Media, 2.0 ft ³
Underbedding, Type & Quantity	Cullsans [®] Underbedding, 6 lb.	Cullsans Underbedding, 15 lb.	Cullsans Underbedding, 15 lb.	Cullsans Underbedding, 16 lb.
Exchange Capacity @ Salt Dosage Per Recharge ¹	18,300 gr @ 4 lb. 25,100 gr @ 9 lb. 27,500 gr @ 12 lb.	18,200 gr @ 4 lb. 27,600 gr @ 8 lb. 32,000 gr @ 12 lb.	28,900 gr @ 6 lb. 38,900 gr @ 12 lb. 46,800 gr @ 18 lb.	32,600 gr @ 7 lb. 61,600 gr @ 18 lb. 71,700 gr @ 30 lb.
Efficiency at Rated Salt Dosage ⁵	4 lb. salt dosage: 4570 gr./lb.	4 lb. salt dosage: 4550 gr./lb.	6 lb. salt dosage: 4814 gr./lb.	7 lb. salt dosage: 4664 gr./lb.
Freeboard to Media ²	20.5 - 21.5 in.	13 in.	15 in.	16 in.
Freeboard to Underbedding ³	42.0 - 42.5 in.	35 in.	48 in.	46 in.
Salt Storage Capacity	250 lb. or 375 lb.	250 lb. or 375 lb.	375 lb.	375 lb.
Rated Service Flow @ Pressure Drop	5.9 gpm @ 12 psi	9.0 gpm @ 12 psi	9.6 gpm @ 15 psi	10.0 gpm @ 14 psi
Total Hardness, Maximum	75 gpg	75 gpg	99 gpg	99 gpg
Total Iron, Maximum (dissolved)	5 ppm	5 ppm	5 ppm	5 ppm
Hardness to Iron Ratio, Minimum	8 gpg to 1 ppm 140 mg/L to 1 mg/L	8 gpg to 1 ppm 140 mg/L to 1 mg/L	8 gpg to 1 ppm 140 mg/L to 1 mg/L	8 gpg to 1 ppm 140 mg/L to 1 mg/L
Operating Pressure	20 - 125 psi 140 - 860 kPa	20 - 125 psi 140 - 860 kPa	20 - 125 psi 140 - 860 kPa	20 - 125 psi 140 - 860 kPa
Operating Pressure (Canada)	20 - 90 psi 140 - 620 kPa	20 - 90 psi 140 - 620 kPa	20 - 90 psi 140 - 620 kPa	20 - 90 psi 140 - 620 kPa
Operating Temperature	33 - 120°F 1 - 50°C	33 - 120°F 1 - 50°C	33 - 120°F 1 - 50°C	33 - 120°F 1 - 50°C
Electrical Requirements	24V/60 Hz	24V/60 Hz	24V/60 Hz	24V/60 Hz
Electrical Power Consumption, Min./Max.	3 Watts/35 Watts	3 Watts/35 Watts	3 Watts/35 Watts	3 Watts/35 Watts
Drain Flow, Maximum ⁴	1.1 gpm	1.7 gpm	1.6 gpm	2.6 gpm
Recharge Time, Average	85 min.	64 min.	64 min.	52 min.
Recharge Water Consumption	23.3 gal.	36 gal.	46 gal.	51 gal.

- Capacities and corresponding salt dosages pertain to low hardness waters. Capacities given per recharge
- Measured from top of media to top of inlet fitting (backwashed and drained) for 8" tanks. Measured from top of media to top surface of tank threads for 10" and 12" tanks.
- Measured from top of underbedding to top of inlet fitting for 8" tanks. Measured from top of media to top surface of tank threads for 10" and 12" tanks.
- Backwash at 120 psi (830 kPa)
- Efficiency rating only valid at stated salt dosage on softminder models and is efficiency rated according to NSF/ANSI Standard 44



Culligan Limited Warranty

CULLIGAN MEDALLIST SERIES™ AUTOMATIC WATER CONDITIONERS

You have just purchased one of the finest water conditioners made. As an expression of our confidence in Culligan International Company products, your water conditioner is warranted to the original end-user, when installed in accordance with Culligan specifications, against defects in material and workmanship from the date of original installation, as follows:

For a period of ONE YEAR	The entire conditioner
For a period of FIVE YEARS	The AccuSoft® circuit board, or Soft-Minder® meter, if so equipped
For a period of TEN YEARS	The control valve body, excluding internal parts
	The conditioner tank
	The salt storage container, brine valve and all its component parts
For the LIFETIME of the original consumer purchaser	The Cullex® resin

If a part described above is found defective within the specified period, you should notify your independently operated Culligan dealer and arrange a time during normal business hours for the dealer to inspect the water conditioner on your premises. Any part found defective within the terms of this warranty will be repaired or replaced by the dealer. You pay only freight from our factory and local dealer charges.

We are not responsible for damage caused by accident, fire, flood, freezing, Act of God, misuse, misapplication, neglect, oxidizing agents (such as chlorine, ozone, chloramines and other related components), alteration, installation or operation contrary to our printed instructions, or by the use of accessories or components which do not meet Culligan specifications, is not covered by this warranty. Refer to the specifications section in the Installation and Operating manual for application parameters.

Our product performance specifications are furnished with each water conditioning unit. TO THE EXTENT PERMITTED BY LAW, CULLIGAN DISCLAIMS ALL IMPLIED WARRANTIES, INCLUDING WITHOUT LIMITATION WARRANTIES OF MERCHANTABILITY AND FITNESS FOR PARTICULAR PURPOSE; TO THE EXTENT REQUIRED BY LAW, ANY SUCH IMPLIED WARRANTIES ARE LIMITED IN DURATION TO THE ONE-YEAR PERIOD SPECIFIED ABOVE FOR THE ENTIRE CONDITIONER. As a manufacturer, we do not know the characteristics of your water supply or the purpose for which you are purchasing a water conditioner. The quality of water supplies may vary seasonally or over a period of time, and your water usage rate may vary as well. Water characteristics can also differ considerably if your water conditioner is moved to a new location. For these reasons, we assume no liability for the determination of the proper equipment necessary to meet your requirements, and we do not authorize others to assume such obligations for us. Further, we assume no liability and extend no warranties, express or implied, for the use of this product with a non-potable water source. OUR OBLIGATIONS UNDER THIS WARRANTY ARE LIMITED TO THE REPAIR OR REPLACEMENT OF THE FAILED PARTS OF THE WATER CONDITIONER, AND WE ASSUME NO LIABILITY WHATSOEVER FOR DIRECT, INDIRECT, INCIDENTAL, CONSEQUENTIAL, SPECIAL, GENERAL, OR OTHER DAMAGES.

Some states do not allow the exclusion of implied warranties or limitations on how long an implied warranty lasts, so the above limitation may not apply to you. Similarly, some states do not allow the exclusion of incidental or consequential damages, so the above limitation or exclusion may not apply to you. This warranty gives you specific legal rights, and you may also have other rights which vary from state to state. Consult your telephone directory for your local independently operated Culligan dealer, or write Culligan International Company for warranty and service information.

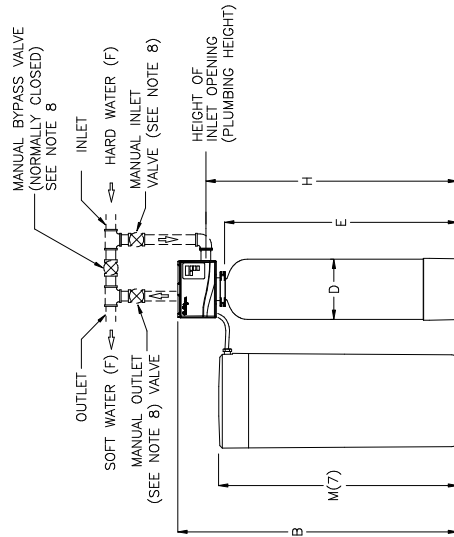
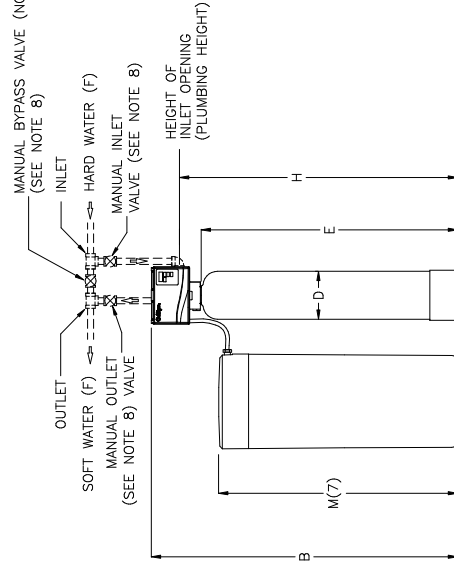
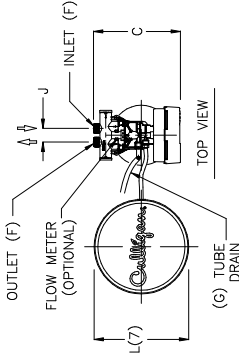
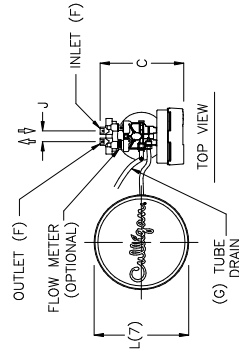
CULLIGAN INTERNATIONAL COMPANY
One Culligan Parkway
Northbrook, Illinois 60062
(847) 205-6000

NOTES:

- (1) ITEMS SHOWN IN BROKEN LINES TO BE FURNISHED BY OTHERS.
- (2) ALL DIMENSIONS ARE ± 1/8" INCH (25mm) AND SUBJECT TO CHANGE WITHOUT NOTICE.
- (3) THE USE OF DISSIMILAR METALS IN A PIPING SYSTEM IS NOT RECOMMENDED. WHERE DISSIMILAR METALS MUST BE CONNECTED IN A WATER SYSTEM, THE USE OF NONCONDUCTIVE (DIELECTRIC) FITTINGS MAY REDUCE GALVANIC CORROSION.
- (4) A TEN FOOT POWER CORD (LONGER LENGTHS AVAILABLE) AND WALL MOUNT TRANSFORMER ARE PROVIDED. THE CUSTOMER SHOULD PROVIDE A RECEPTACLE, PREFERABLE ONE NOT CONTROLLED BY A SWITCH THAT CAN BE TURNED OFF ACCIDENTALLY. OBSERVE THE LOCAL ELECTRICAL CODES.
- (5) ALLOW 6-12 INCHES BEHIND THE UNIT FOR PLUMBING AND DRAIN LINES AND 4 FEET ABOVE FOR SERVICE ACCESS AND FILLING THE SALT CONTAINER.
- (6) TO PERMIT THE OBSERVATION OF THE DRAIN FLOW DO NOT MAKE A DIRECT CONNECTION TO THE DRAIN. PROVIDE AN AIR GAP OF AT LEAST TWO TIMES THE DIAMETER OF THE DRAIN PIPE OR CONFORM TO LOCAL SANITATION CODES.
- (7) BRINE TANK DIMENSIONS SHOWN ARE FOR THE BRINE TANK MOST COMMONLY SELECTED FOR USE WITH THIS SIZE SYSTEM
- (8) BYPASS VALVE IS INCLUDED WITH SOFTENER. PLUMBING OF 3-VALVE BYPASS IS OPTIONAL.

DIMENSIONS (INCHES)

MODEL	WIDTH A	HEIGHT B	TANK DEPTH C	TANK SIDE- DIA. SHELL D	INLET/OUTLET PIPE SIZES F	DRAIN SIZE G	FLOOR TO INLET INLET H	INLET TO OUTLET J	BRINE TANK DIA. L(7)	BRINE TANK HEIGHT M(7)	MAX. CAPACITY KGR @ SALT DOSAGE	RESIN VOLUME ft ³	CONTINUOUS FLOW gpm @ psi drop	DRAIN MIN. DRAIN FLOW PIPE SIZE gpm IN.	SIMPLEX OPER. WT./SHIP. WT. lbs.	SIMPLEX FLOW SIZE OPER. WT./SHIP. WT. lbs.	
8"	31	52	14.5	8	44	0.5	48	1.88	16	43	27,500 @ 12	0.70	5.9 gpm @ 12 psi	1.1	0.5	423	97
30 MODEL	33	48	15	10	40	0.5	43.20	2.35	16	43	32,000 @ 12	1.0	9.0 gpm @ 12 psi	1.7	0.5	457	115
45 MODEL	35	62	15	10	54	0.5	57.20	2.35	18	43	46,800 @ 18	1.5	9.6 gpm @ 15 psi	1.6	0.5	651	139
60 MODEL	37	60	15	12	52	0.5	55.20	2.35	18	43	71,700 @ 30	2.0	10.0 gpm @ 14 psi	2.6	0.5	776	188



SINGLE INSTALLATION
8" MODEL

SINGLE INSTALLATION
PLUS SERIES
(30, 45, AND 60 MODELS)

Let.	Change	By	App	Date

DO NOT SCALE DRAWING TOLERANCES: ±1/8" UNLESS OTHERWISE NOTED		NAME HOUSEHOLD AUTOMATICS MEDALLIST SERIES SINGLE TECHNICAL DATA SHEET	
		DETAILED BY: KMR	APP. BY: 2/10/04
		SHEET 1 OF 1	
			PART NO. MEDALLIST_1
PRINT AND BILL OF MATERIAL ARE NOT TO BE USED WITHOUT THE WRITTEN CONSENT OF CULLIGAN INTERNATIONAL CO.		ENGINEERED SYSTEMS NORTHBROOK, ILLINOIS	

