

# Retro Fit Gearbox Mount Assembly Instructions



Treker 4400NT & 4400ST Series

Manual No. 700-372M

## Before You Start



When you see this symbol, the subsequent instructions and warnings are serious - follow without exception. Your life and the lives of others depend on it!

**IMPORTANT:** Before you begin, read these instructions and check to be sure all parts and tools are accounted for. Please retain these installation instructions for future reference and parts ordering information.

Your Land Pride Retro Fit Gearbox Mount is exclusively designed for Land Pride 4400NT & 4400ST Trekers. Please read these installation instructions and the vehicle Operator's Manual thoroughly before beginning. Especially read information relating to safety concerns. Also included in the Operator's Manual is important information on operation, adjustment, troubleshooting, and maintenance for this attachment (some manual sections do not apply to all accessories).

A separate Parts Manual for replacement parts can be purchased from your dealer or downloaded free of charge from our web site at [www.landpride.com](http://www.landpride.com). Have model and serial numbers handy when placing an order.

### Manual Part Numbers:

- Operator's Manual ..... 700-108M
- Parts Manual ..... 700-108P

## General Information

These assembly instructions apply to the following Retro Fit Gearbox Mounting Kits listed below:

**700-373A NT Retro Fit Gearbox Mount**  
**700-374A ST Retro Fit Gearbox Mount**

### Tools required:

- Safety Glasses
- Work Gloves
- Center Punch
- Hammer
- Drill with 1/8" & 11/32" Drill Bits
- Torque wrench with required sockets listed below
- 7/16" Socket and box end or open end wrench
- 1/2" Socket and box end or open end wrench
- 9/16" Socket and box end or open end wrench
- M22 Socket and box end or open end wrench
- 3/16" Hex socket wrench

## Assembly Instructions

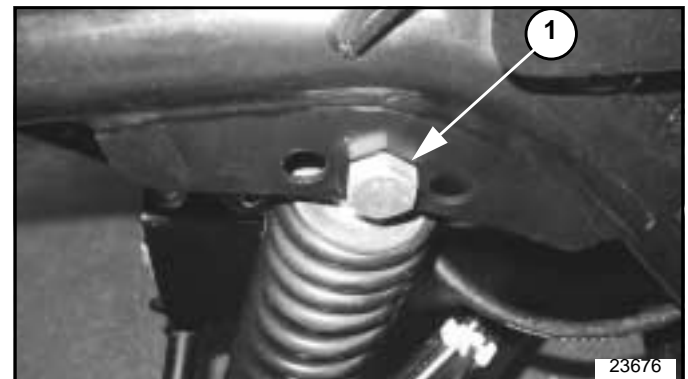
A detailed listing of parts for each accessory kit is provided on page 5. Use the list that is for your Treker as a checklist to inventory parts received. Please contact your local Land Pride dealer for any missing hardware.

### Initial Preparations

1. Park vehicle on a flat surface, move gear shift lever to forward, set park brake, lock the cargo box in the up position, turn off engine and remove ignition key.
2. Chock front and back of front tires to prevent the vehicle from rolling.
3. See Operator's Manual 700-108M for proper jacking procedures. **Follow all safety precautions in the manual.** Jack the back of the vehicle up to remove pressure on the back right shock.

#### Refer to Figure 1:

4. Remove M14 hex nut and hex head cap screw (#1).



Description  
Figure 1

#### Refer to Figure 2:

5. Rotate shock back to access gearbox components.



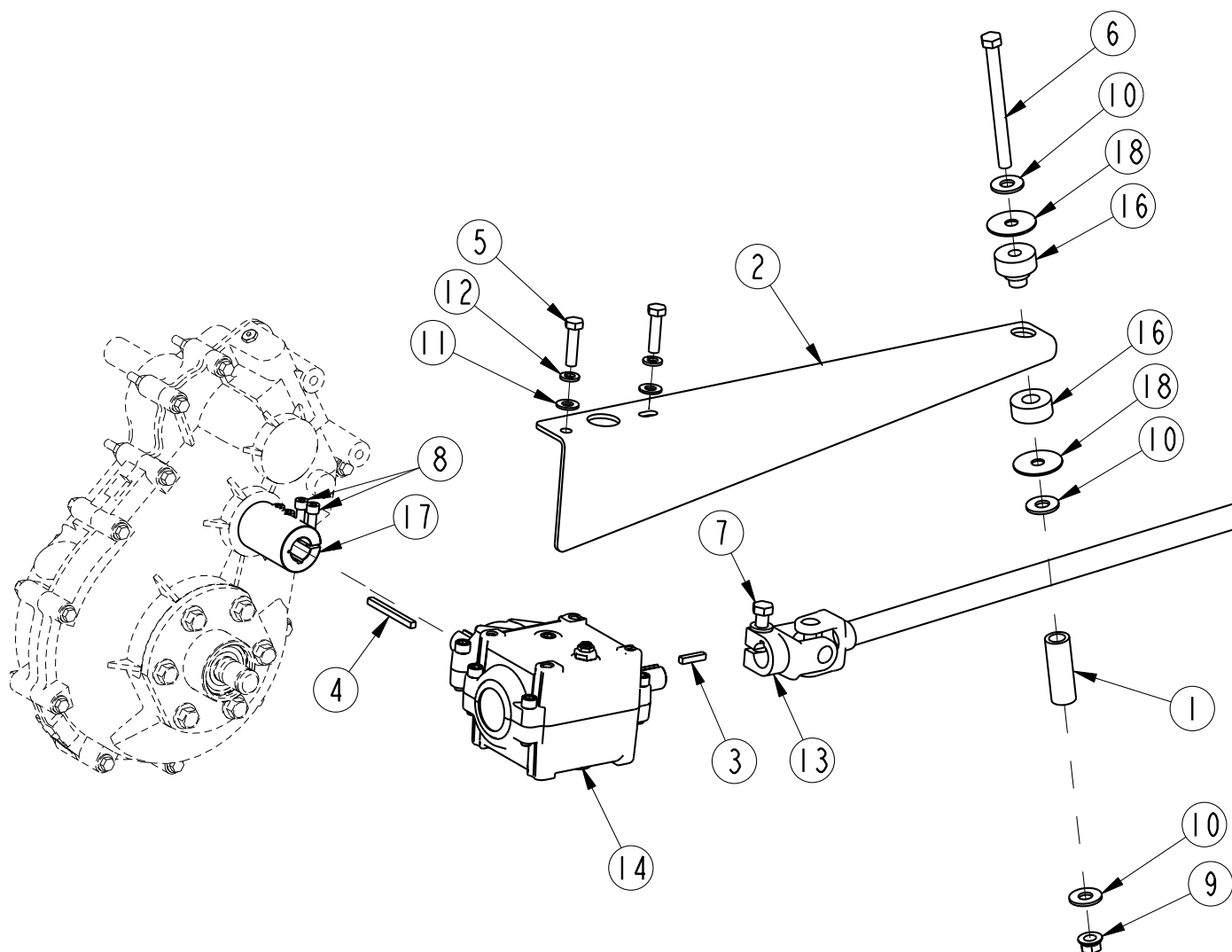
Description  
Figure 2

## Assembly Instructions

### Gearbox Removal

#### Refer to Figure 3:

1. Remove 3/8" x 4 1/4" lg. upper shock bolt (#6), three 3/8" flat washers (#10), two fender washers (#18), one H style motor mounts (# 16), gearbox mounting spacer (#1) and 3/8" hex nut (#9). Discard all removed parts.
2. Remove two 5/16" x 3/4" lg. hex head bolt (#5), lock washer (#12) and flat washer (#11). Discard all removed parts.
3. Remove Transfer case mount (#2) and discard.
4. Loosen 3/8" x 1" hex head cap screw (#7) at the gearbox drive shaft connection (#13).
5. Loosen the two 1/4" hex socket cap screws (#8) securing the gearbox coupling (#17) to the right angle gearbox (#14).
6. Remove right angle gearbox (#14) from the vehicle. Be careful not to loose keys (#3) and (#4).



23678

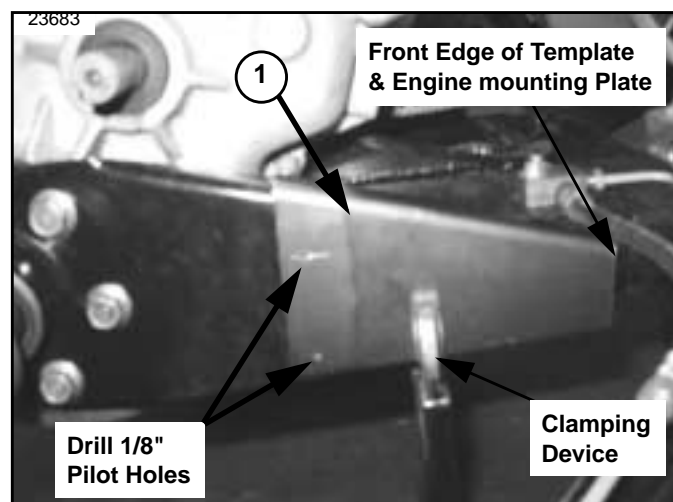
Gearbox Removal  
Figure 3

## Assembly Instructions

### Preparations for new Gearbox Mount

**Refer to figure 4:**

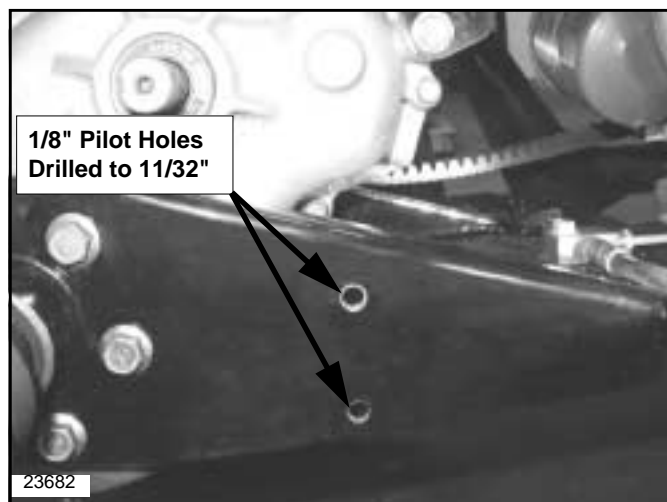
1. Clamp template plate (#1) to vehicle by aligning the front edge of template with the front edge of the engine mounting plate.
2. Drill two 1/8" pilot holes in engine plate using holes provided in the template.



Template Set-up  
figure 4

**Refer to Figure 5:**

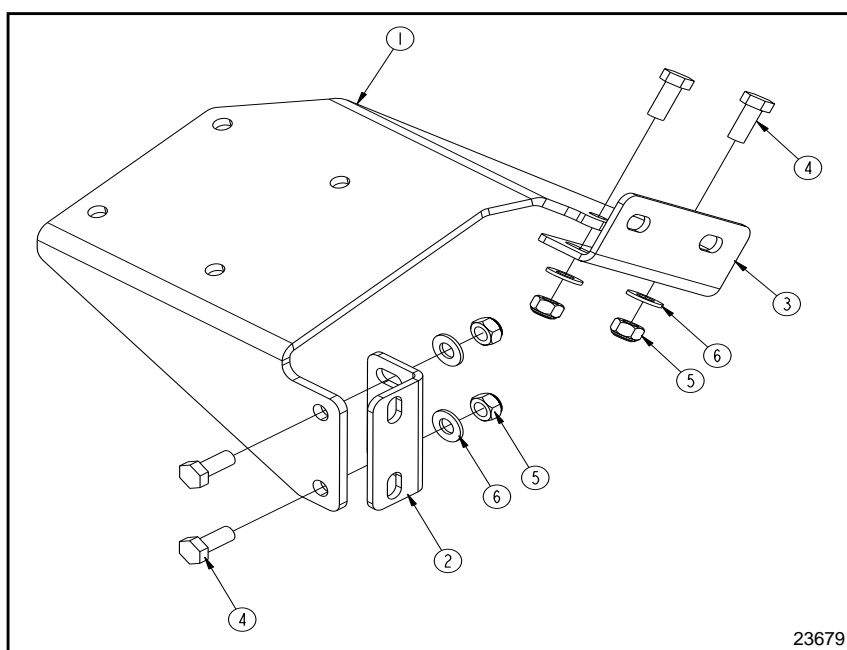
3. Remove template and redrill pilot holes to 11/32" diameter.



Pilot Holes Redrilled to 11/32" Diameter  
Figure 5

**Refer to Figure 6:**

4. Assembly 2 3/4" lg. mounting bracket (#2) to gearbox mounting plate (#1) with two 5/16"-18 x 3/4" lg. GR5 hex head cap screw (#4), 5/16" flat washers (#6) and hex nylock nut (#5) as shown. **Do not tighten.**
5. Assembly 3 7/8" lg. mounting bracket (#3) to gearbox mounting plate (#1) with two 5/16"-18 x 3/4" lg. GR5 hex head cap screw (#4), 5/16" flat washers (#6) and hex nylock nut (#5) as shown. **Do not tighten.**



Gearbox Mounting Plate Assembly  
Figure 6

## Assembly Instructions

### Gearbox Assembly

Refer to Figure 7 on page 4:

1. Assemble right angle gearbox (#12) to mounting bracket (#2) with four 5/16"-18 x 3/4" lg. GR5 hex head cap screws (#5) and lock washers (#10). Tighten cap screws to 17 ft. lbs. of torque.
2. Attach gearbox mounting bracket (#2) to the newly drilled 11/32" holes in the engine mounting plate (#1) with two 5/16"-18 x 3/4" lg. GR5 hex head cap screws (#5A), flat washers (#9A) and hex head nylock nuts (#8A). **Do not tighten.**
3. Reassemble front drive shaft (#11) and 3/16" x 7/8" key (#3) to the gearbox. **Do not tighten 3/8" hex head cap screw (#6).**
4. Reassemble gearbox (#12) and 3/16" sq. key (#4) to gearbox coupler (#14). Torque 1/4"-28 coupler cap screws (#7) to 10 ft. lbs.
5. Torque 3/8" hex head cap screw (#6) to 49 ft. lbs.
6. Torque the two hex nylock nuts (#8A) to 17 ft. lbs.
7. While holding gearbox mounting bracket (#13) tight against the transmission support bracket (#16), tighten the four 5/16"-18 hex head cap screws (#5D) to 17 ft. lbs. of torque.
8. Center punch the center of the two slots in mounting bracket (#13).
9. Drill 1/8" pilot holes in the transmission support bracket (#16) at the center punch marks. **Be careful not to drill through the transmission housing.**

10. Redrill the pilot holes to 11/32" diameter. **Be careful not to drill through the transmission housing.**

11. Attach bracket (#13) to transmission support (#16):

- **NT Trekers:**

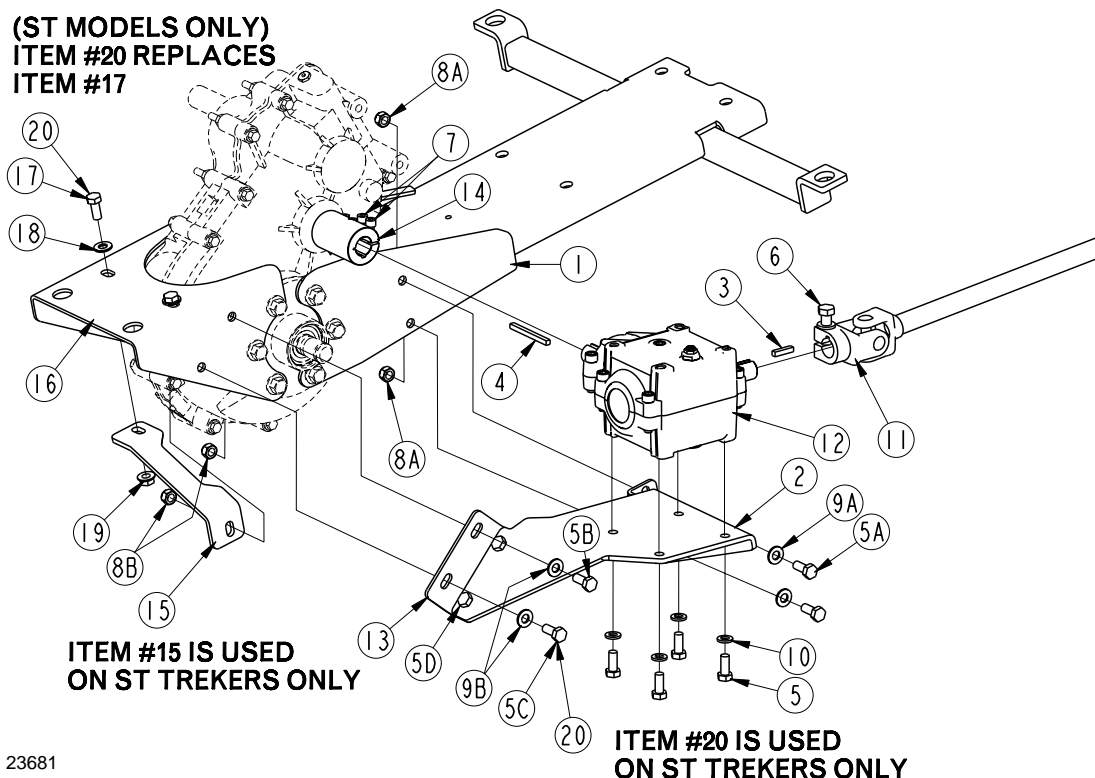
- a. Install two 5/16" x 3/4" lg. hex head cap screws (#5B & 5C), flat washers (#9B) and hex head nylock nuts (#8B). Torque nuts to 17 ft. lbs.

- **ST Trekers:**

- a. Install 5/16"-18 x 3/4" lg. GR5 hex head cap screw (#5B), flat washer (#9B) and hex head nylock nut (#8B). Do not tighten.
- b. Remove 5/16" muffler mounting hardware (#17, 18 & 19) on the left side of vehicle only. Discard bolt #17.
- c. Attach support bracket (#15) to the under side of transmission support (#16) with new 5/16"-18 x 1" lg. GR5 hex head cap screw (#20) and existing 5/16" flat washer #18 & nylock nut (#19). **Do not tighten.**
- d. Insert 5/16"-18 x 1" lg. GR5 hex head cap screw (#20), flat washer (#9B) and hex head nut (#8B).
- e. Tighten nuts (#8B & #19) to 17 ft. lbs. of torque.

Refer to Figure 1 & Figure 2 on page 1:

12. Reinstall existing shock with M14-2.00 hex nut and cap screw. Torque nut to 105 ft. lbs.
13. Lower vehicle to the ground and remove wheel chocks.



23681

Gearbox Removal (Muffler Not shown For Clarity)

Figure 7

**Listing of Parts**

Qty.	Part No.	Part Description
------	----------	------------------

<b>Kit No. 700-373A .....NT RETRO FIT GEARBOX MOUNT</b>		
---	--	--

1	700-372M	MANUAL 4X4 GEARBOX MOUNT
1	700-408D	GEAR BOX MNT PLATE
1	700-448D	MOUNT BRACKET GEARBOX FRONT
1	700-455D	MOUNT BRACKET GEARBOX NT
1	700-457D	GEARBOX MOUNT TEMPLATE
12	802-735C	HHCS 5/16-18X3/4 GR5 YELLOW DI
8	803-084C	NUT HEX NYLOCK 5/16-18 PLT
8	804-084C	WASHER FLAT 5/16 HARD ASTM F436
4	804-201C	WASHER LOCK SPRING 5/16 YELLOW

<b>Kit No. 700-374A .....ST RETRO FIT GEARBOX MOUNT</b>		
---	--	--

1	700-372M	MANUAL 4X4 GEARBOX MOUNT
1	700-408D	GEAR BOX MNT PLATE
1	700-416D	GEAR BOX SUPPORT BRACKET
1	700-447D	MOUNT BRACKET GEARBOX REAR
1	700-448D	MOUNT BRACKET GEARBOX FRONT
1	700-457D	GEARBOX MOUNT TEMPLATE
11	802-735C	HHCS 5/16-18X3/4 GR5 YELLOW DI
1	802-738C	HHCS 5/16-18X1 GR5 YELLOW DIE
8	803-084C	NUT HEX NYLOCK 5/16-18 PLT
9	804-084C	WASHER FLAT 5/16 HARD ASTM F436
4	804-201C	WASHER LOCK SPRING 5/16 YELLOW



Corporate Office: P.O. Box 5060  
Salina, Kansas 67402-5060 USA  
[www.landpride.com](http://www.landpride.com)

---