



Cat. No. 01881923

Rev. D 01/06/03

DCO# 5378

# Culligan® Preferred™ Series Drinking Water Filters

## Installation, Operation, and Service Guide

### SPECIFICATIONS

Operating Pressure Range: 10 - 125 psi (0.7 bar - 8.6 bar)

Operating Temperature Range: 35 - 100°F (2 - 38°C)

Service Flow Rate: 0.5 gpm (1.9 Lpm)

Capacity: 750 gal. (2,839L) Preferred 150

1000 gal. (3,785L) Preferred 250

300 gal. (1,135L) Preferred 350

For cold water use only



NSF's Certification Program  
is accredited by the American  
National Standards Institute

NSF's Certification Program  
is accredited by the Dutch  
Council for Accreditation

System Tested and Certified by NSF  
International against NSF/ANSI  
Standards 42 and 53 for the reduction of:

#### Standard No. 42: Aesthetic Effects

##### Chemical Unit

Taste and Odor Reduction

Chlorine Reduction

##### Mechanical Filtration Unit

Particulate Reduction

99.9+% reduction of particles  
one-half micron and larger in size

#### Standard No. 53: Health Effects

##### Chemical Reduction Unit

Lead Reduction

VOC Reduction (350 Only)

##### Mechanical Filtration Unit

Turbidity Reduction

Cyst Reduction

Asbestos Reduction

Validated by WQA according to NSF/ANSI 42  
and 53 for the claims listed by NSF International  
as verified and substantiated by test data.

Check for compliance with state and local laws and regulations.  
Do not use with water that is microbiologically unsafe or of  
unknown quality without adequate disinfection before or after the  
system. Systems certified for cyst reduction may be used on  
disinfected water that may contain filterable cysts.

Note that some states require licensed installers, and some  
states prohibit the use of saddle valves.

### INSTALLATION

Culligan recommends that Preferred Series Drinking Water  
Filters be installed with a faucet dedicated to dispensing only  
filtered water. Such a faucet is available from Culligan by  
ordering P/N 01-0035-37\*. Refer to the plumbing schematic  
shown in Figure 1 when completing this type of installation.  
Other recommended applications include point-of-use  
drinking water coolers, refrigerators, and ice makers.

\*Not tested or certified by NSF.

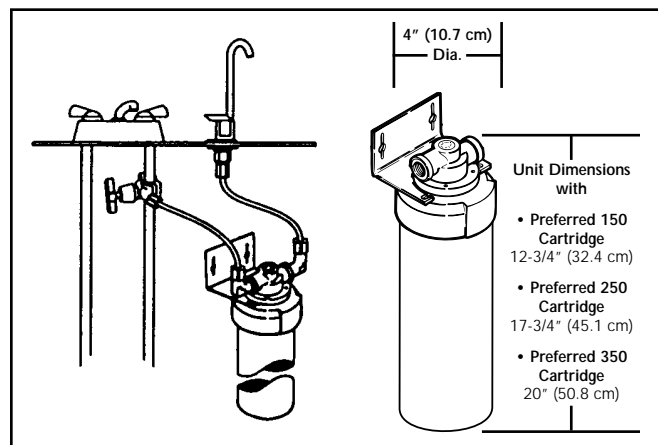


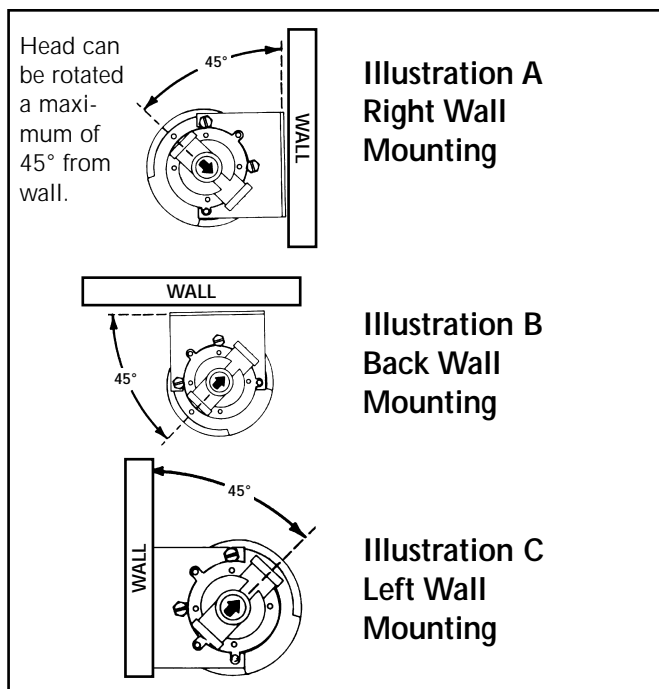
Figure 1

This filter system is supplied with fittings which are  
designed for use with 1/4 inch O.D. polyethylene tubing:  
available from Culligan by ordering P/N 00-4021-84\*.

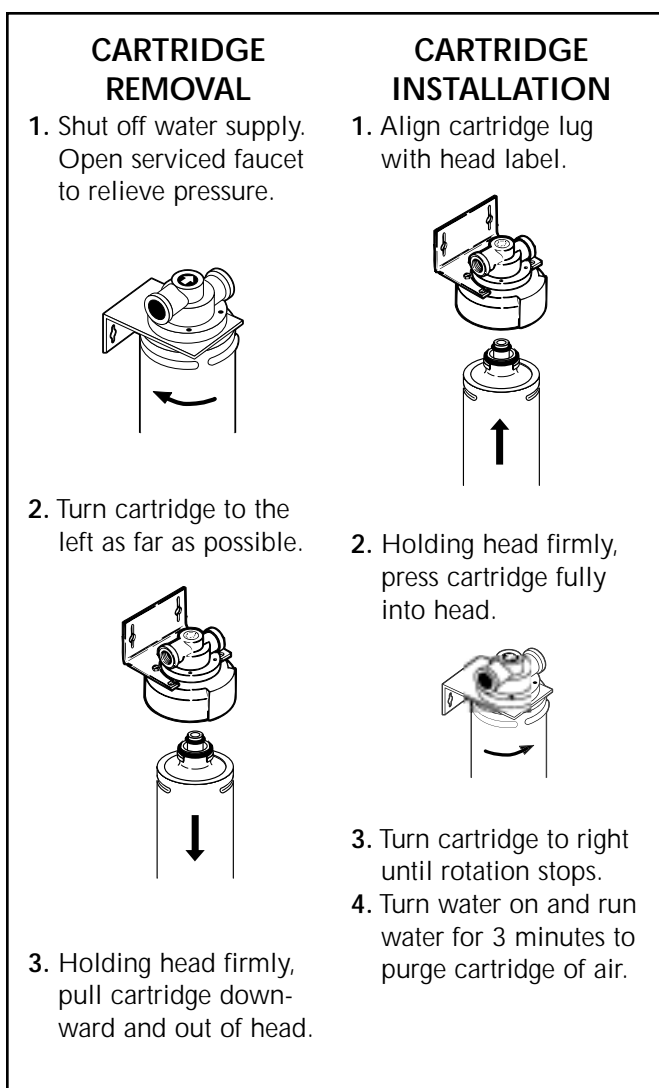
1. Select a location for the filter assembly which:
  - Provides a solid mount for the filter head.
  - Allows a minimum 2 inches (5 cm) of clearance under the cartridge.
  - Allows space for inlet and outlet water line connections.

Note: The filter must be mounted vertically.

2. Provide an inlet water supply for the filter by tapping the cold water line. This connection should accommodate 1/4 inch O.D. polyethylene tubing and must comply with state and local laws and regulations.
3. Install the faucet or dispensing device according to the instructions provided with the device.
4. Refer to Figure 2 to determine the best filter bracket position to accommodate the water connections.
5. Install the 0.5 gpm flow restrictor fitting into the outlet port on the filter head using Teflon tape.  
Note: The restrictor is built into one of the elbow fittings.
6. Install the remaining 1/4 inch tubing fitting into the filter head inlet using Teflon tape.
7. Mount the filter head using the screws and washers provided.
8. Connect the inlet and outlet tubing to the inlet and outlet fittings of the filter. Double check the water connections to be sure that water will follow the direction-of-flow arrow on top of the head; water supply to inlet fitting, outlet fitting to faucet.
9. Install the filter cartridge as detailed in Figure 3.
10. Flush the cartridge for three minutes to purge the system of air.



**Figure 2**



**Figure 3**

## **FILTER REPLACEMENT**

These drinking water systems must be maintained according to the manufacturer's instructions, including timely replacement of filter cartridges. Follow the guidelines below to determine when the filter cartridge must be replaced in each system. Refer to Figure 3 for the service sequence.

### **Preferred™ 150 Filter**

The filter cartridge must be replaced after every 750 gallons or one year of use (whichever comes first), or whenever there is a change in taste or odor or a noticeable decrease in flow. 750 gallons of water use is roughly equivalent to using 2 gallons of water daily for one year.

### **Preferred™ 250 Filter**

The filter cartridge must be replaced after every 1000 gallons or one year of use (whichever comes first), or whenever there is a change in taste or odor or a noticeable decrease in flow. 1000 gallons of water use is roughly equivalent to using 2-1/2 gallons of water daily for one year.

### **Preferred™ 350 Filter**

The filter cartridge must be replaced after every 300 gallons or one year of use (whichever comes first), or whenever there is a change in taste or odor or a noticeable decrease in flow. 300 gallons of water use is roughly equivalent to using 1-1/2 gallons of water daily for six months. Conforms to NSF/ANSI 53 for VOC reduction. See Performance Data Sheet for individual contaminants and reduction performance.

### **Replacement Cartridge Part Numbers**

Preferred 150 Filter Cartridge	01-0028-68
Preferred 250 Filter Cartridge	01-0028-69
Preferred 350 Filter Cartridge	01-0028-70

*Replaceable components and service parts are available through your local independent Culligan dealer. To learn the name of your nearest dealer, contact:*

Manufactured by:  
**CULLIGAN INTERNATIONAL COMPANY**  
 One Culligan Parkway  
 Northbrook, IL 60062  
 USA  
 (847) 205-6000  
<http://www.culligan.com>