



# PHILIPS

Introduction .....	3
System Requirements .....	3
Product Features .....	3
Controller Diagram .....	4
Button Descriptions .....	4-5
Installation .....	6-11
Properties .....	12-15
Profile Editor .....	16-23
Uninstall .....	24
Vista 32 Addendum .....	25-30
Troubleshooting .....	31
Frequently Asked Questions (FAQ) .....	32-38
Technical Support .....	39
FCC Warning .....	39

**IMPORTANT:** Before using this product please read your PC system instruction manual for safety and other information.

## Introduction

Thank you for purchasing the SGC2910 Wireless PC Controller for use with Personal Computers. You are now ready for total enjoyment of all your favorite PC Games from up to 30 feet away. Included docking USB receiver ensures convenience and high-level performance. The Controller is equipped with two built-in vibration motors, which have unbalanced weights to provide vibration feedback in games that support this feature. In addition, for the ultimate in control, an advanced mouse and key emulation profile editor software is included to enable added functionality and programming options.

## System Requirements

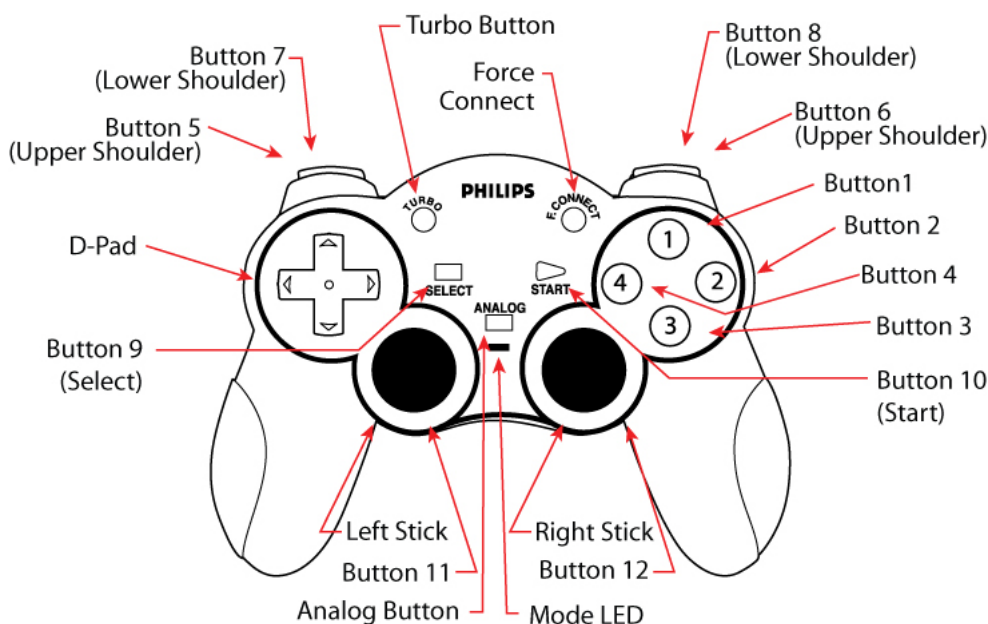
- IBM compatible personal computer with a Pentium 350 or higher processor
- Microsoft Windows Vista 32, 98SE, ME, 2000 or XP operating system
- 32 MB of RAM or higher
- 35 MB of available HDD space
- Double-speed CD-ROM drive or higher
- Super VGA monitor with display card supporting High Color
- USB port

## Product Features

- A) Advanced 2.4GHz RF Tech Wireless Technology
- B) Auto Sleep and Wake function
- C) Auto Scan
- D) Two (2) analog control sticks-Left/Right
- E) Four (4) digital fire buttons (1,2,3,4)
- F) Four (4) shoulder buttons (5,6,7,8)
- G) Start & Select buttons (function as 9, and 10 button)
- H) Analog Button
- I) Analog LED Indicator
- J) Built in Dual Vibration Feedback Motors with on/off switch
- K) 8-Way directional control pad
- L) Turbo fire button
- M) Force Connect button enables players to change their player position anytime (Advance Feature)
- N) USB Docking Receiver
- O) Superior Long Distance link Wireless technology UP to 30 feet

# Controller Diagram

## Controller Diagram



## Button Descriptions

- Directional Pad-Represents UP, DOWN, LEFT, RIGHT and four diagonals. Directional pad will function as POV (Point of View) hat during analog mode.
- Buttons “1”, “2”, “3”, and “4” are default fire buttons and are digital in nature.
- Left analog and right analog sticks - each contain two axes. Left analog stick controls the X and Y axis. Right analog stick controls the Rz and Z axis. Also, there is a “hidden” button “11” and “12” under each stick that are activated when the analog stick is depressed inward. The ‘hidden’ buttons function in both analog and digital modes.
- Buttons “5”, “6”, “7”, and “8” are all digital shoulder buttons.
- Analog button - used to switch the controller from digital to analog mode (and vice versa). Digital mode is the default mode. The red LED will illuminate when the controller is in analog mode and off in digital mode.
- Turbo Button - Use when desiring to engage the controller in a repeating mode (Auto Fire)
- Start / Select buttons-serve as digital buttons (9,10) See game manual for use of these buttons
- F. Connect Button - This button is found on the SGC2910 Wireless PC Controller and on the docking receiver marked with PHILIPS logo. This button is used to force link a SGC2910 Wireless PC Controller and docking receiver. An advanced feature of this function is as follows; Suppose player 2 wants to change to player 1, just press the F.Connect button on his SGC2910 Wireless PC Controller, then press the F.Connect button on the player 1 receiver, his controller will become player 1 controller.

## Power Switch

The power switch is located on the back of the SGC2910 Wireless PC Controller. The switch can be set to three settings as shown in the CONTROLLER DIAGRAM (photo 3) image. Off setting will turn the SGC2910 Wireless PC Controller power off. On setting turns the SGC2910 Wireless PC Controller power on. Vibration off setting turns the SGC2910 Wireless PC Controller power on, but the vibration feedback is powered off to conserve battery and enable longer playing time.

## Analog Button

Use to switch between digital and analog. Digital mode is the default mode. In digital mode, the left analog stick digital controls the X and Y axis. The right analog stick emulates the 1, 2, 3, and 4 action buttons. In the analog mode, the Digital directional pad functions as a point of view hat while the left analog stick controls the X and Y axis. The right analog stick controls the Rz and Z axis. The LED light nearest to the Analog button will be illuminated when Analog mode is on.

Note: The D-pad functions as a point of view control for most software titles, but may operate differently depending on the design of each individual game.

## Turbo Button

The turbo feature of the SGC2910 Wireless PC Controller allows the user to set various keys as a turbo fire (Auto Fire) “repeating mode”. This means that user can then hold down the button of his/her choice and the action will be repeated (without having to hit the button numerous times). This is especially useful in games that require weapons to be fired over and over again.

## Programming Instructions:

Press and hold the desired fire button then press the turbo button one time (LED Illuminates and Flash). You now have turbo fire. Repeat and you will remove turbo fire. When turbo fire is used, the LED within the turbo button will flash. Turbo fire can be assigned to buttons 1,2,3,4,5,6,7,8, 11,12, Select and Start.

Note: Turbo fire will also work with your custom profiles. In this instance the turbo fire will repeat the keyboard key that was programmed to the SGC2910 Wireless PC Controller button.

## Force Connect Button

The F.Connect button is used to force link the SGC2910 controller and docking receiver. The F.Connect button is found on the SGC2910 Wireless PC Controller and docking receiver marked with PHILIPS logo. By pressing the F.Connect button on SGC2910 Wireless PC Controller and the docking receiver, you can force these two devices to connect. This feature is used when multiple SGC2910 Wireless PC Controllers are used in the same location.

## Auto Sleep

The SGC2910 Wireless PC Controller will enter sleep mode after 1 minutes without any activity. This mode will conserve battery life. Press the Select, Start, Button 11, or Button 12 to wake up the SGC2910 Wireless PC Controller.

## Vibration Feedback

The SGC2910 Wireless PC Controller has two internal motors. Their weights are unbalanced to provide vibration when it is activated by game software.

Note: The vibration feedback will only function with software titles that support vibration. You must install the SGC2910 Wireless PC Controller software. There are many different force feedback and rumble effects available, however due to differences in software and hardware design, the SGC2910 Wireless PC Controller may not support all effects. You will find that the range of effects that the SGC2910 Wireless PC Controller supports will vary from game to game.

## Installation

### Installation procedure for users of Windows® XP & 2000

To properly install your SGC2910 Wireless PC Controller, the controller must be connected to your USB port first. Once Windows XP and 2000 have properly loaded the HID (human interface device) drivers for the SGC2910 you can begin software installation. Carefully follow the steps below.

### Installation procedure for users of Windows® 98SE & ME

Installation step for Windows 98SE and ME is the same as the Windows XP and 2000. However, you will need to install the software first and once finished, you can plug in the controller. Please perform the installation in this order to ensure the SGC2910 and software is installed properly. Carefully follow the steps below in the correct order.

Note: If you are connecting a USB device for the first time, Windows 98SE and ME may ask for the Windows Setup CD-ROM during installation to install the required system files. You will need to place the Windows Setup CD-ROM in your CD-ROM drive to finish the installation.

### Controller Setup and Installation

1. Make sure the SGC2910 Wireless PC Controller on/off switch is in the off position. Remove the battery cover and install three (3) AAA batteries into the SGC2910 Wireless PC Controller (not included). Plug the USB docking receiver into an available USB port on the PC. (Plug directly to a USB port on your PC tower or desktop.)
2. Windows 98SE, ME, 2000, and XP will automatically detect the SGC2910 Wireless PC Controller upon connection. The Wireless PC Controller will be detected by Windows as "SGC2910 Wireless PC Controller".
3. In Windows 98SE and ME, a Windows message will announce "NEW HARDWARE FOUND". The ADD NEW HARDWARE WIZARD will open announcing that Windows has detected a USB Human Interface Device. Click 'NEXT' to continue. Windows will ask, "What do you want Windows to do?" Choose the default option: "Search for the best driver for your device". Then click 'NEXT'. Follow the onscreen instructions to allow Windows to install the recommended HID drivers for your device. (NOTE: If you are connecting a USB device for the first time, Windows may ask for the Windows Setup CD-ROM during installation to install the required system files.)
4. In Windows XP and 2000, a Windows message will announce that "NEW HARDWARE FOUND", followed by another message announcing "Human Interface Device Found". Windows will then automatically load the correct HID drivers for the Wireless PC Controller.
5. Once installation has completed, Windows may prompt you to restart your PC. If this occurs please select 'YES'.

Note: LED on the docking receiver flashes when scanning for the SGC2910 Wireless PC Controller and stays illuminated when connection is complete. RF connect button on controller will stay illuminated continuously while the SGC2910 Wireless PC Controller on/off switch is on.

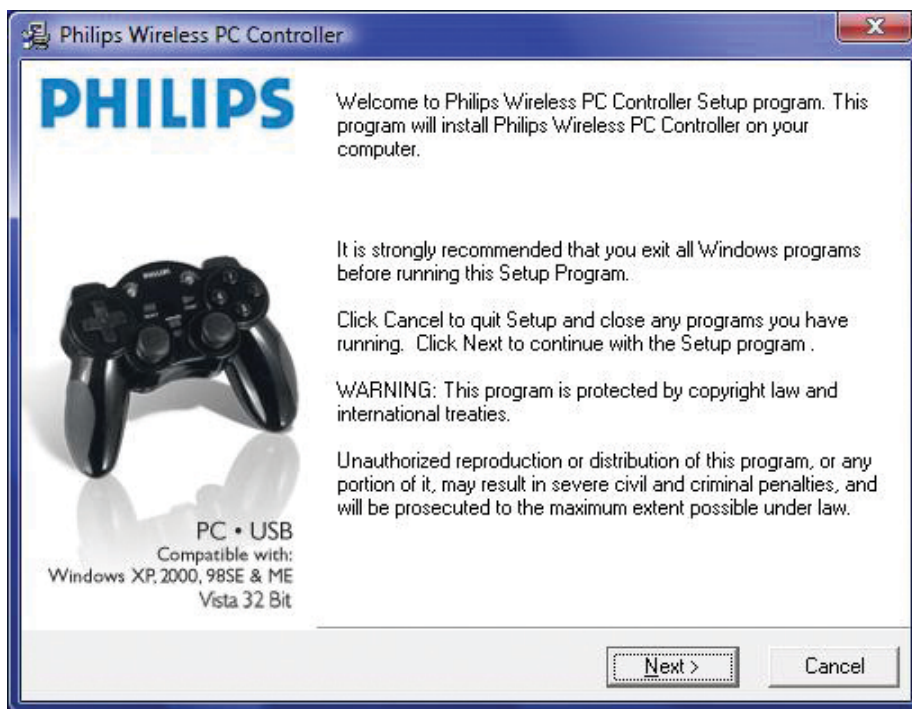
### Software Installation for Users of Windows®

1. The SGC2910 Wireless PC Controller should be connected to your PC before beginning software installation under Windows XP and 2000. In Windows 98SE and ME the software is installed first.
2. Close down all programs that are currently running on your computer.
3. Place the SGC2910 software CD into your CD-ROM drive.
4. Click on the 'START' button in the Windows Task Bar and choose 'RUN'. Click 'BROWSE' and choose your CD-ROM drive. The 'LOOK IN' box should display your CD-ROM drive. NOTE: You may need to click on the 'My Computer' icon in order to select your CD-ROM drive.

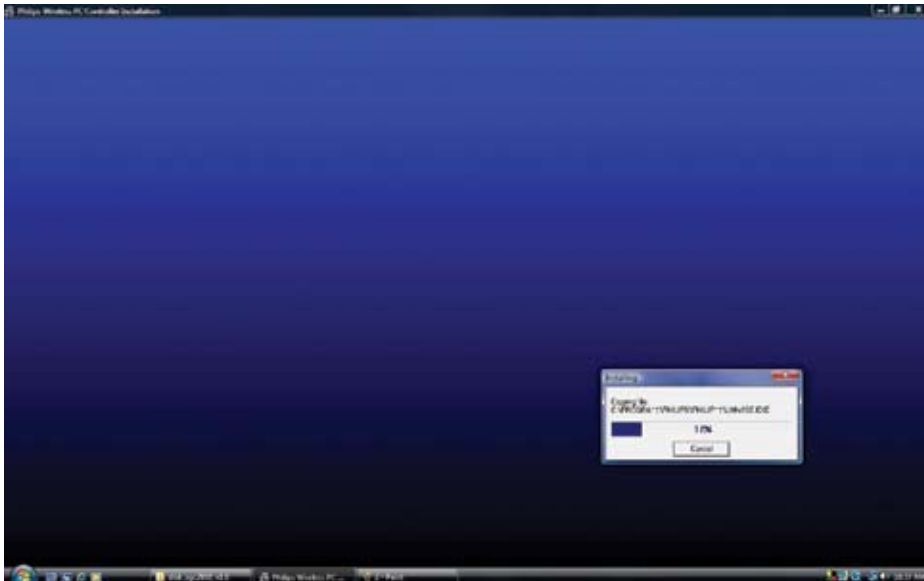
5. Select 'Setup for Philips Wireless PC Controller.exe' and click OK. The following window should appear.



6. Once initialization has finished, the 'SGC2910 Wireless PC Controller' Install Wizard screen will appear.



7. After reading the notice, press the 'NEXT' button to begin the software installation.  
You should now see the following screen indicating that the software is being installed on your system.

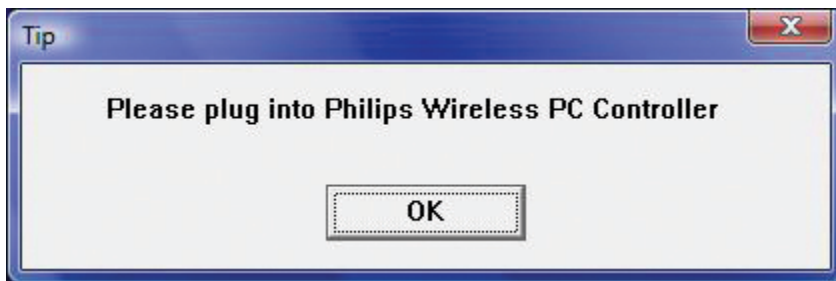


Note: During installation on Windows XP and 2000 the following digital signature message may appear.  
The message will read that the “Philips Controller has not passed Windows Logo testing”. Please click “Continue Anyway” or “Yes” to continue with the installation.

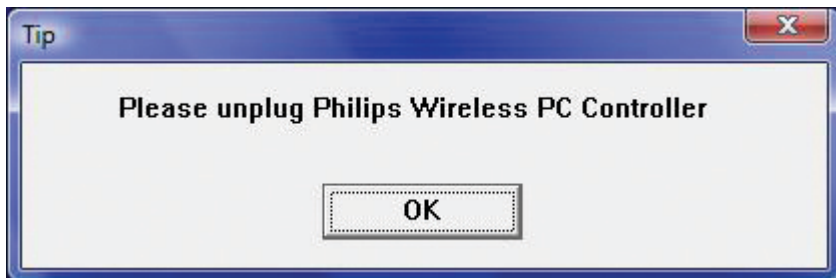




8. In Windows XP and Windows 2000, the SGC2910 Wireless PC Controller should be connected to your PC before beginning software installation. If the SGC2910 is not connected to your PC, the following warning message will appear. If this message appears, you must connect the SGC2910 Wireless PC Controller to the computer. You may need to wait a few seconds for Windows to load the HID drivers. Once completed, you can click the "OK" button.



9. When the PC detects the SGC2910 Wireless PC Controller, the following message will appear and ask you to disconnect the controller. Once you have disconnected the SGC2910, you should click the 'OK' button. If the message reappears you should wait several seconds and then click the 'OK' button. Some PCs require several seconds to detect the SGC2910 as disconnected.



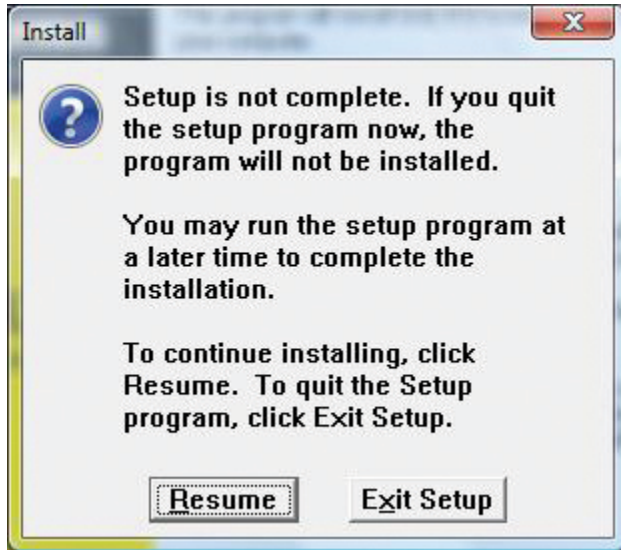
10. You can now click the 'FINISH' button at the following screen to complete the installation.



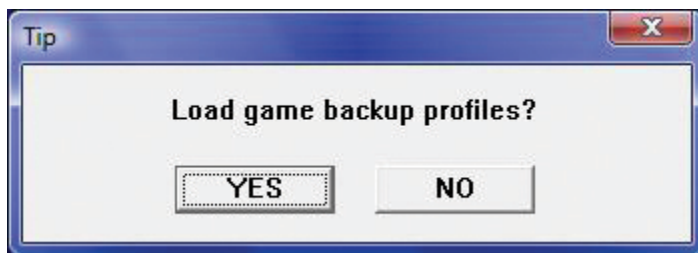
11. Once installation is complete you can reconnect the SGC2910 to your PC's USB port. Windows may prompt you to restart your PC. If this occurs please select 'YES'.

## Installation Notes

1. You can abort the software installation by clicking the 'CANCEL' button. The following screen would then appear. Clicking 'RESUME' will resume the installation, while clicking 'EXIT SETUP' will quit the installation.



2. If you previously installed the SGC2910 software on your PC the following Windows prompt may appear. This prompt will only appear if you selected to backup profiles during a previous SGC2910 software uninstall. If you click 'Yes' the backup profiles will be automatically loaded. If you click 'No' the backup profiles will be deleted. This prompt will not appear during the first installation of the SGC2910 software.

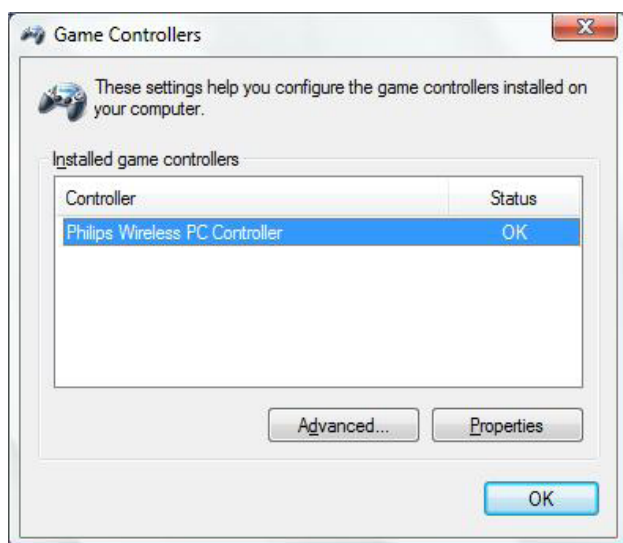


## Properties

### SGC2910 Wireless PC Controller Properties

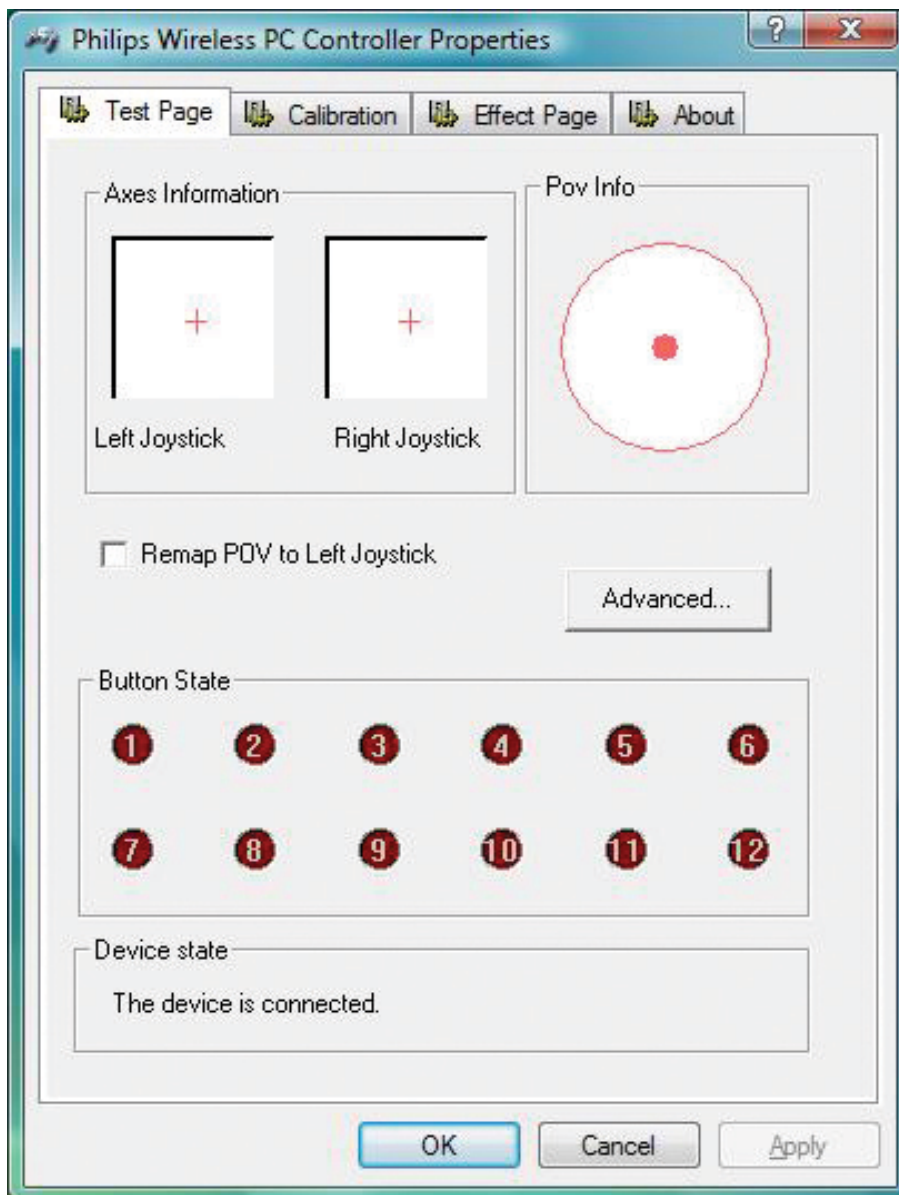
Congratulations, you should have completed installing your SGC2910 Wireless PC Controller and its software. The SGC2910 Wireless PC Controller is now ready for use. You should now test all the functions of your SGC2910 Wireless PC Controller to ensure it is functioning properly. Verify that the SGC2910 Wireless PC Controller is connected to your PC before continuing. Verify that your SGC2910 Wireless PC Controller is turned on and not in sleep mode. You should press the 'START' button to verify it is not in sleep mode.

1. To test the SGC2910 you will need to open the Windows Control Panel and click on the Game Controllers or Gaming Options icon.
2. In Windows 98SE, ME, and 2000 you must click on the 'START' button in the Windows Task Bar and select 'SETTINGS' and 'CONTROL PANEL'. Now click on the Gaming Options Icon.
3. In Windows XP, you must click on the 'START' button in the Windows Task Bar and select 'CONTROL PANEL'. If Windows XP is running in Category View you select "PRINTERS and OTHER HARDWARE" and then 'GAME CONTROLLERS'. If running in Classic View you click on the 'GAME CONTROLLERS' icon.
4. Once Game Controllers/Gaming Options has opened the SGC2910 Wireless PC Controller should be listed in the main Game Controllers/Gaming Options Window with a status of OK next to it.

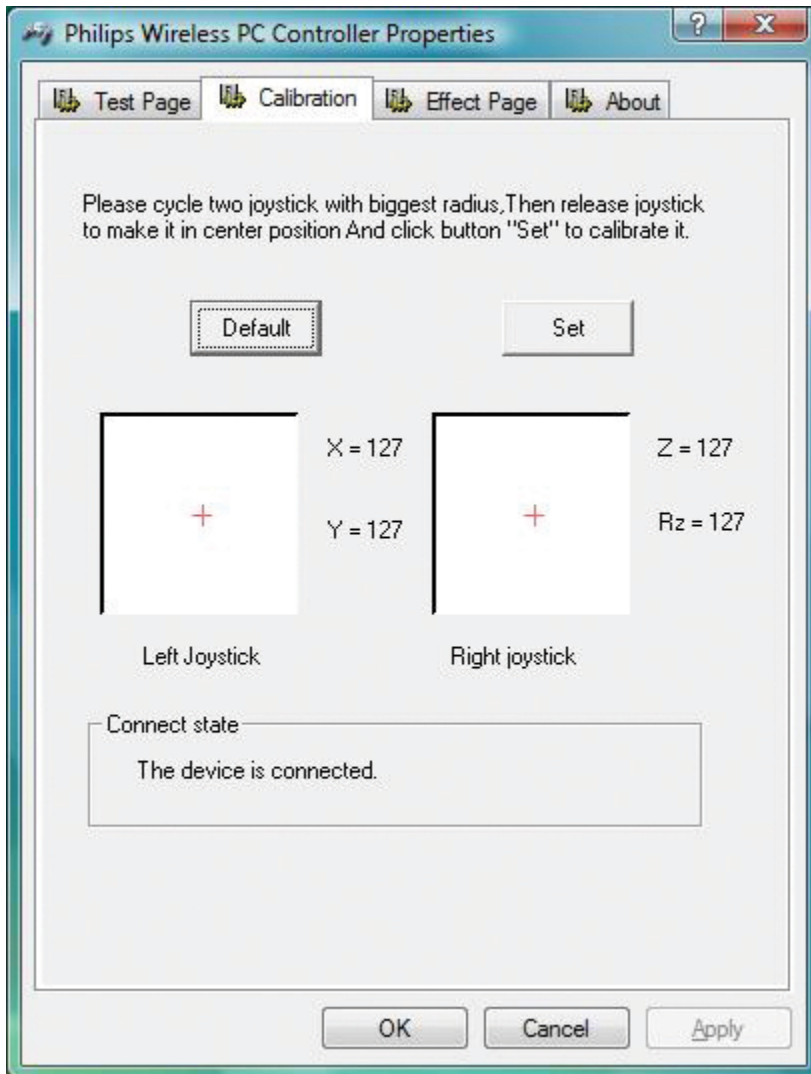


5. Highlight "Philips Wireless PC Controller" by clicking on it. Then click on 'PROPERTIES' button to open the SGC2910 Wireless PC Controller Properties Window.
6. The Wireless PC Controller Properties consists of four pages for testing all the functions of the Philips Wireless PC Controller.

7. 'TEST PAGE' is used for verifying that all buttons and controls are functioning properly. Pressing a button on the SGC2910 Wireless PC Controller will highlight that button on the 'TEST PAGE'. Move the analog sticks and d-pad of the Wireless PC Controller and see if they respond correctly. By default the d-pad will function as a POV hat. Placing a check in the "Remap POV hat to Left Joystick" will set the d-pad to control the X/Y axes. This will disable the d-pad's default POV controls and the d-pad and left analog stick will have the same directional movement controls. Clicking the 'Advanced' button will open the Profile Editor main menu. You should take some time to familiarize yourself with how your SGC2910 controller functions. See how the controls function in analog and digital mode.

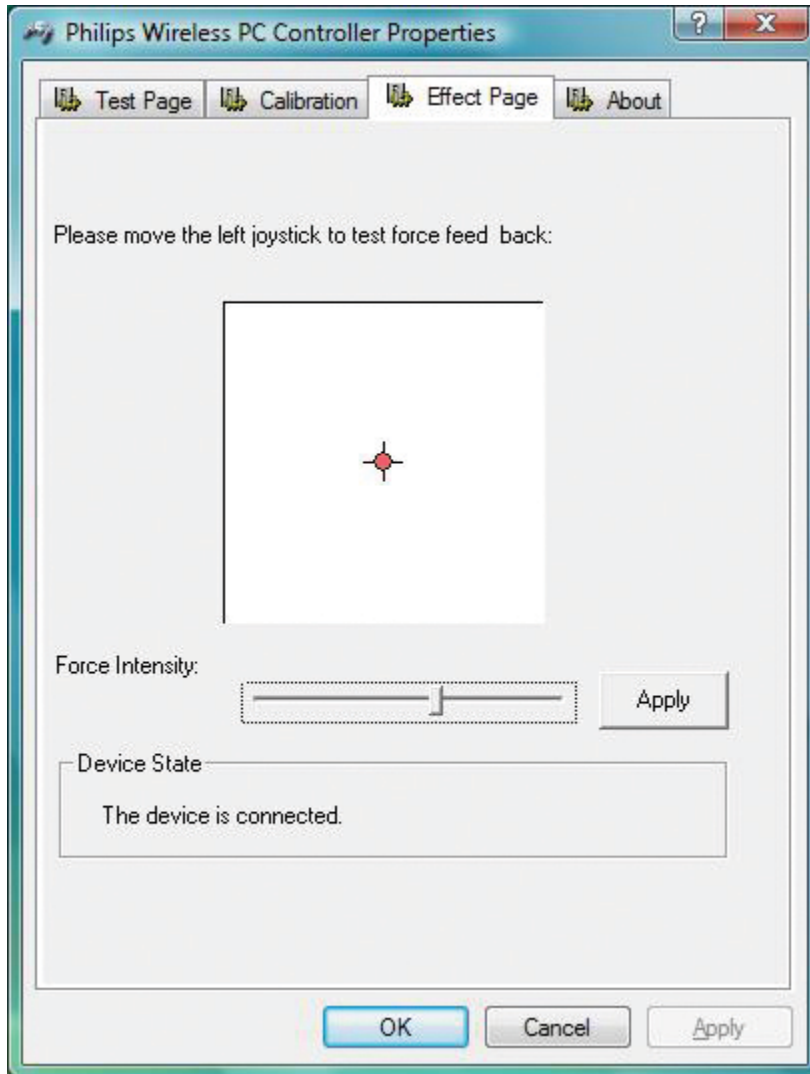


8. The 'CALBRATION PAGE' is used to calibrate the analog sticks. This page is only used if you experience misaligned axes or erratic, shaky response of the analog sticks on the 'TEST PAGE'. Click the 'SET' button and follow the onscreen instructions.



- The 'EFFECT PAGE' is used to verify that the vibration motors are functioning properly. Move the left analog stick to test the vibration of the left and right motor.

Note: The 'ABOUT PAGE' displays information regarding the Wireless PC Controller and the version number of the installed driver.



- Once all tests have been performed, you can click 'OK' to close SGC2910 Wireless PC Controller properties. If your PC game supports USB game controllers you can now start playing your games. If you have a PC game that only supports the keyboard and mouse you should look through the 'Mouse and Key Profile Editor Software' section to learn how to program the SGC2910 for use with your game.

Congratulations, you have now completed familiarizing yourself with how your SGC2910 Wireless PC Controller operates. At this time, if your PC game supports USB game controllers you can start playing your games. If you have a PC game that only supports the keyboard and mouse you should look through the "Mouse and Key Profile Editor Software: section to learn about this advance software tool that allows you to program the SGC2910 Wireless PC Controller for use with these games.

## Profile Editor

### Mouse and Key Profile Editor Software

#### What is the Profile Editor Software?

The Profile Editor is a program that allows you to customize your SGC2910 Wireless PC Controller for PC games that do not support USB game controllers. It can program keyboard keys and mouse movement to the SGC2910, allowing you to use the controller with PC games that only support the mouse and keyboard. You can create multiple profiles for each PC game you own. This allows you to have a customized control layout for the various PC games you play.

#### What is Profile?

A Profile is a set of programmed keyboard keys and control settings that determines how your SGC2910 functions in a PC game. Multiple Profiles can be created and saved for use with multiple games.

#### Should I use the Profile Editor?

The use of the Profile Editor is optional. If a PC game supports USB game controllers then you should not use the Profile Editor. Most PC games have an “Options/Setup” or “Controller Configuration” menu screen where you can configure your controller’s buttons to perform commands in the game. It is recommended that you use these menu screens if available. Users should configure the SGC2910 by using the game’s configuration screen.

The Profile Editor is for use with PC games that only support the mouse and keyboard as input devices. Typically, game controllers could not be used with these PC games. The Profile Editor will allow you to use your SGC2910 with these PC games. You are able to assign keyboard keys, mouse buttons, and mouse movement to the controller with the Profile Editor. This will allow you to use the SGC2910 with PC games that only support the keyboard and mouse.

Note: Check if your PC game supports USB game controllers. If it does, then you should not use the Profile Editor. To verify if a PC game will work with USB game controllers, you should check the recommended specifications on the game packaging, check the instruction manual, or look in the game’s “Options/Setup” menu. You can also check the game publisher’s website or contact their technical support department.

### How to program the SGC2910 with Profile Editor Software

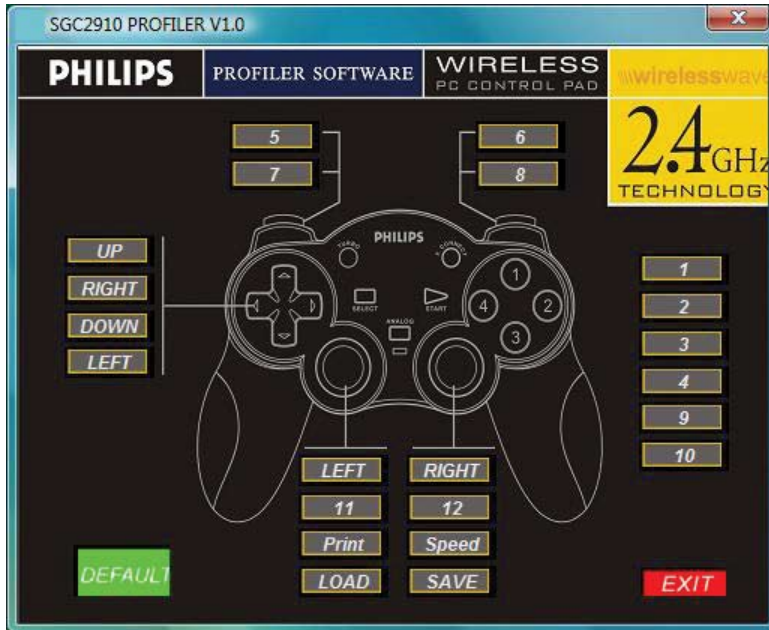
The following section will show you how to create a profile for the SGC2910 Wireless PC Controller. Creating a profile will allow you to use the SGC2910 with your mouse and keyboard games.

1. You can start the Profile Editor by double-clicking on the ‘SGC2910 Wireless PC Controller’ desktop shortcut. An image of the desktop shortcut is shown below. You can also start the Profile Editor by clicking on the “ADVANCED” button within the Test Page of the SGC2910 Wireless PC Controller Properties.

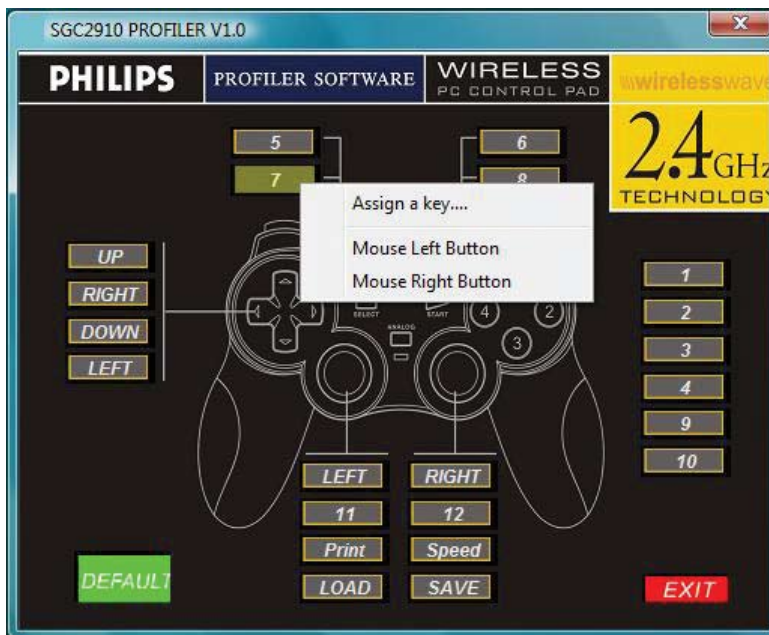




2. You should now see the main menu of the Profile Editor. In the main menu you can assign keyboard keys and mouse movement to the SGC2910. You can assign a keyboard key to any of the SGC2910's buttons and d-pad directionals. You can assign mouse movement to the left or/and right analog stick.

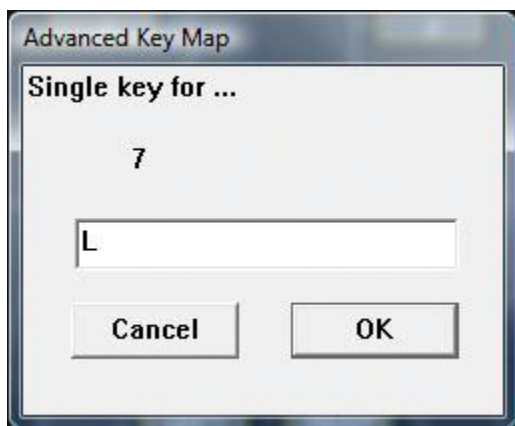


3. To program a controller button you must click on the button label representing the controller key. In the screen below we are programming button 7.

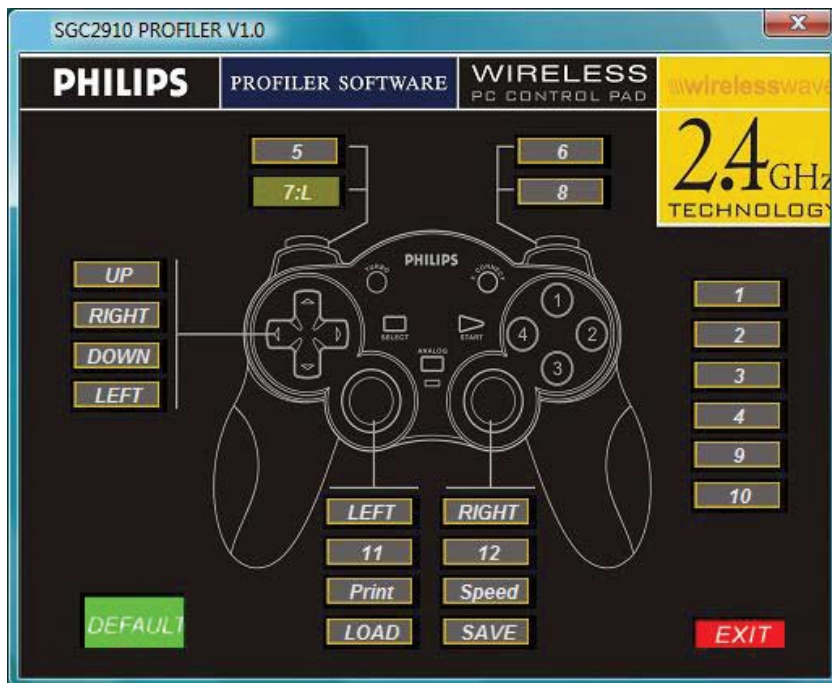


# Profile Editor

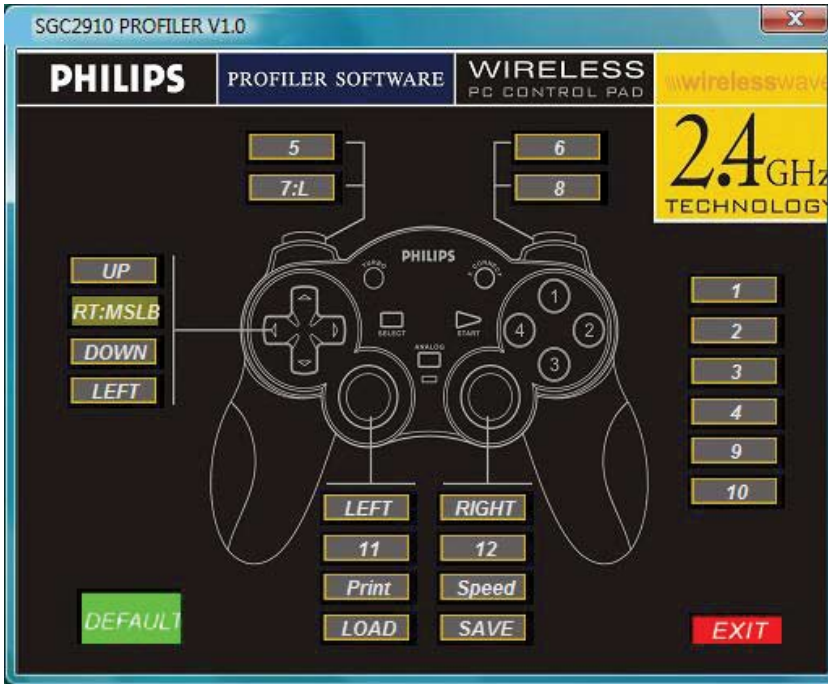
4. When you click on a button label a pop-up menu will appear with three available options; Assign a key, Mouse Left Button, and Mouse Right Button. Each option will be described below. You select the desired option by clicking on it.
  - a. Assign a key ... - This option is used to assign any keyboard key to the highlighted controller button. Once this option has been selected the Advanced Key Map window will appear.



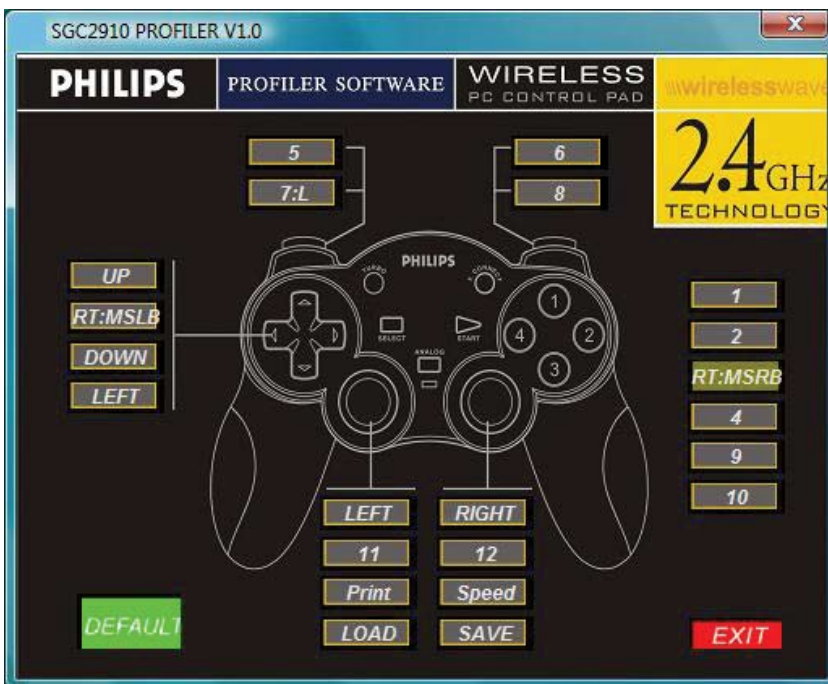
- b. Pressing any keyboard key will assign the pressed key to the selected controller button. In our example above, the L key has been assigned to controller button 7. Pressing the 'Cancel' button will cancel the programming and return you to the main menu. Clicking 'OK' will program the L key to controller's button 7.
  - c. Once you click OK, you will be returned to the main menu. You will now see that button 7's label has changed to "7:L". This indicates that pressing controller button 7 will produce the L key.



- d. Mouse Left Button – This option allows you to assign the mouse's left button to the highlighted button. Once selected, the controller is automatically programmed. In our example below, the left mouse button has been assigned to the d-pad right directional.

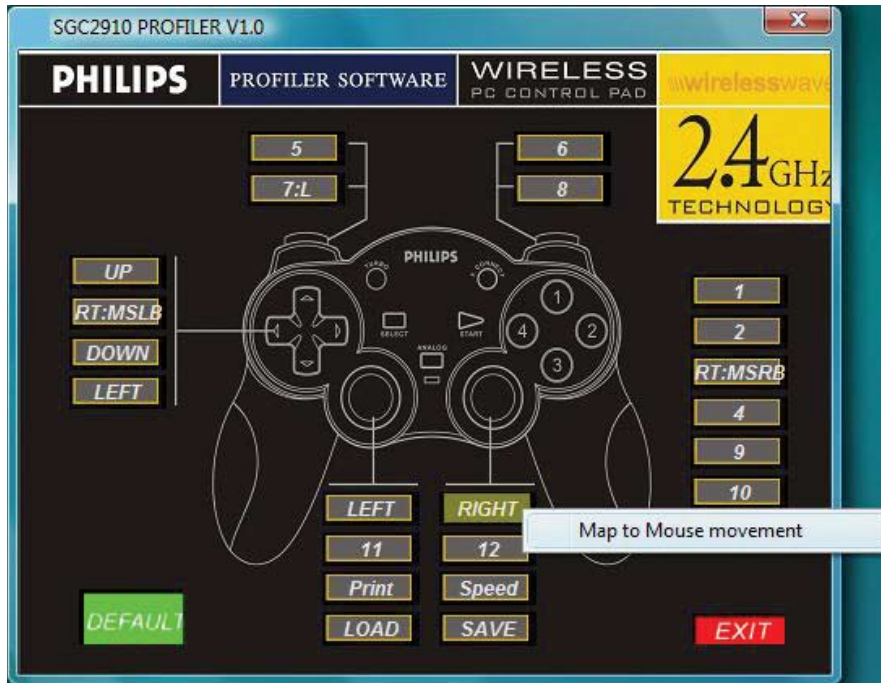


- e. Mouse Right Button – This option allows you to assign the mouse's right button to the highlighted button. Once selected, the controller is automatically programmed. In our example below, the right mouse button has been assigned to the controller's button 3.

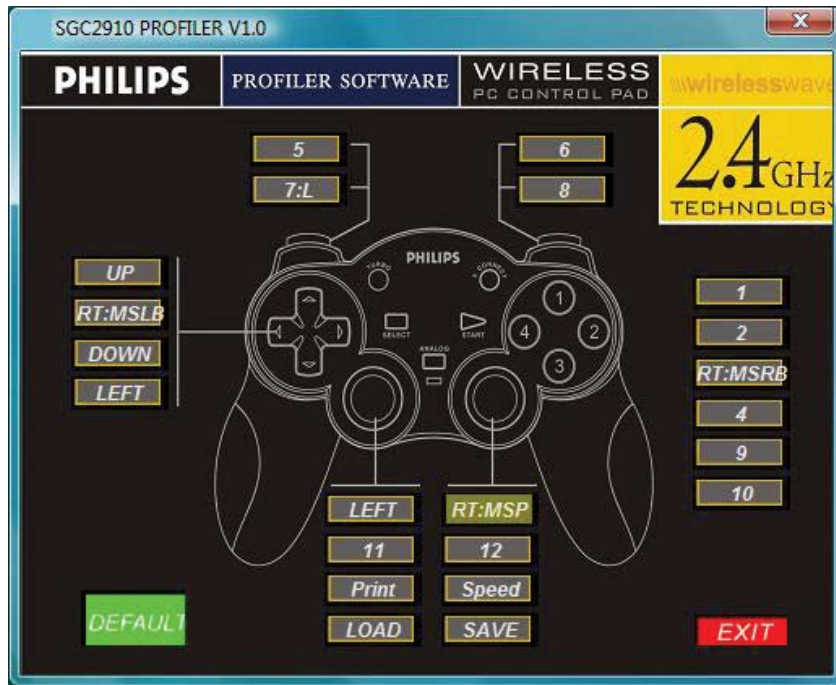


# Profile Editor

- f. You can repeat the steps described above to program all the buttons of the controller. Programming the d-pad is the same as programming buttons.
5. Mouse movement can be assigned to the Left or/and Right analog sticks. Mouse movement is the only option that can be assigned to the analog sticks. Mouse movement can be assigned to one or both analog sticks.
  - a. Click on the label of the analog stick you wish to program. In our example, the right analog stick is selected. You can then select the Map to Mouse Movement option to automatically assign mouse movement to the right analog stick.

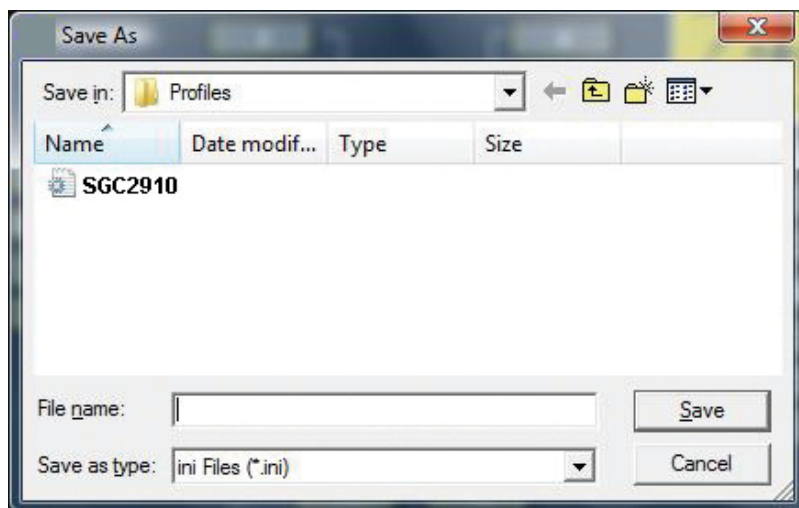


- b. You will then return to the main menu. The mouse movement has been assigned to the right analog stick. Moving the right analog stick will control the mouse cursor.

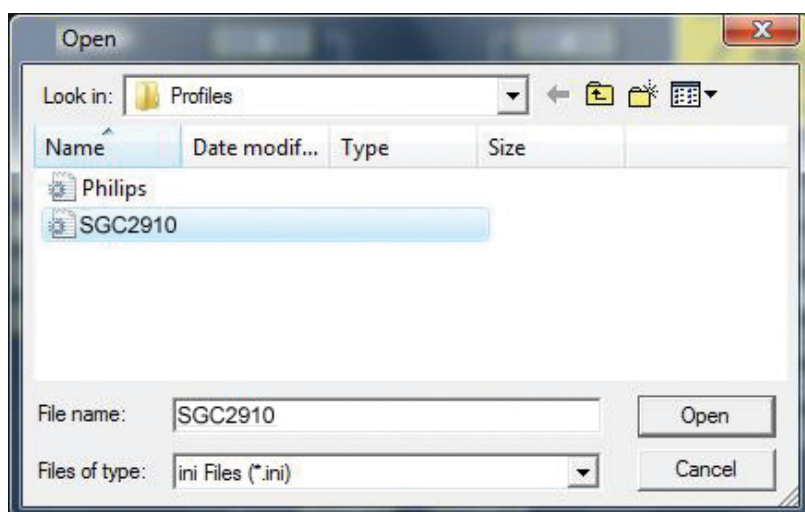


# Profile Editor

6. **SAVE button** – Once you have finished programming you should click the **SAVE** button to save your profile for a use at a later date.
  - a. Clicking the **SAVE** button will bring up the following window. Type a profile name within the “File Name” box and click the **Save** button. Note: It is recommended to save profiles with the same name as the PC game you desire to use the profile with. By default, Windows XP, 2000, ME & 98SE profiles are saved to the C:\Program Files\Philips\Wireless PC Controller\profile directory. Under Windows Vista profiles are saved to the C:\Users\Public\Public Documents\Wireless PC Controller Profiles\Profiles.

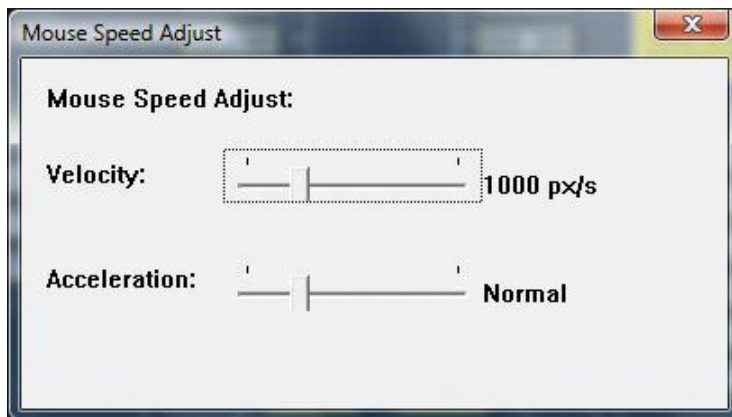


7. **LOAD button** – The **LOAD** button is used to load a previously saved profile.
  - a. Clicking the **LOAD** button will bring up the following window. Select the desired profile you wish to load by clicking on it. Once the profile has been highlighted, you can click the open button.



Note: Before playing your game you will need to load the desired profile you created for that game. Please verify that you have loaded the correct profile for the game you wish to play. It is always a good idea to check the profile before you begin the PC game. This will ensure the SGC2910's controls are configured correctly for the game.

- b. When you return to the main menu all the controls of the SGC2910 will be assigned according to the loaded profile.
- 8. **DEFAULT** button – Clicking on the **DEFAULT** button will reset the SGC2910 controls to the default setting. The default setting is recommended for use with PC games that support USB game controllers.
- 9. **SPEED** button – This button will open the **Mouse Speed Adjust** sub-menu as shown below. This sub-menu is used to adjust the velocity and acceleration of the emulated mouse movement. These two options allow you to improve the emulated mouse movement of the analog sticks. In some PC games, the emulated mouse movement may move too rapidly or slowly. You may also find precision to be poor. Adjusting these two options will improve the emulated mouse movement and provide a better game play experience.



- a. **Velocity** – You can adjust velocity by dragging the slider with your mouse’s left button. The velocity setting adjusts how fast the mouse cursor will move when you use the SGC2910’s analog stick. This setting adjusts the number of pixels the mouse cursor will move per second. The left of the slider will cause the velocity to be slower, while the right side of the slider will increase the velocity.
  - b. **Acceleration** – You can adjust acceleration by dragging the slider with your mouse’s left button. The acceleration setting adjusts the sensitivity of the SGC2910’s analog stick. The left of the slider will cause the acceleration to be slower, while the right side of the slider will increase the acceleration.
- Note: It is recommended that you adjust the velocity and acceleration to see what changes it causes to the emulated mouse movement.
10. **PRINT** button – This button allows you to print the main menu of the Profile Editor for reference during gameplay. A printout will provide you with a reference of the assigned keys.

Congratulations, you now know all the features and functions of the profile editor software. You are now ready to create your own custom profile for your PC games. Assignments and programming are automatically loaded as the changes are made. Once you have completed your profile you should save it for a later date. You can then close the Profile Editor as the created profile is automatically loaded.

Note: If you want to test your profile it is recommended that you simply use your text editor or Microsoft Word®. Pressing the controller’s buttons in these programs and PC games will output the assigned keyboard keys. Give it a try. Move the analog stick that you assigned mouse movement to. Your mouse cursor should automatically move.

When the SGC2910 is in digital mode the d-pad will control mouse movement and lose any controller buttons that are programmed to it. It is recommended that the SGC2910 be set to analog mode when you desire to use the Profile Editor.

## Uninstall

### Software uninstall for users of Windows® 98SE, ME, 2000, XP

PC Controller software can be uninstalled if desired. There are two procedures for uninstalling the Wireless PC Controller driver software. Both procedures are listed below. Both procedures will remove the SGC2910 software from your system.

#### Uninstall through Add/Remove Programs

1. You can use the "Add/Remove Programs" application included in your Windows operating system to uninstall the SGC2910 Wireless PC Controller software.
2. In Windows 98SE, ME, 2000, and XP you must click on the 'START' button in the Windows Task Bar and select 'SETTINGS' and 'CONTROL PANEL'. Now click on the Add/Remove Programs icon.
3. Once Add/Remove Programs has opened you should scroll down to 'SGC2910 Wireless PC Controller' and highlight it by clicking on it. Now click on the 'Remove' button to open 'SGC2910 Wireless PC Controller Uninstall Program'.
4. Skip to step 6 in the UNINSTALL through WIRELESS PC CONTROLLER SOFTWARE section below.

#### Uninstall through Wireless PC Controller Software

1. During installation of the SGC2910 software a folder was created in your system's program files directory. The default location of the folder is "C:\Program Files\Philips\SGC2910 Wireless PC Controller". A shortcut to the Philips Wireless PC Controller folder was also added to your programs folder in the "Start Menu".
2. To uninstall Wireless PC Controller's software, Click on the 'START' button in the Windows Task Bar.
3. Select the "PROGRAMS" folder on the "START MENU".
4. Scroll down to the "Philips" folder, then select the 'SGC2910 Wireless PC Controller' folder.
5. Select 'uninstall'. The 'SGC2910 Wireless PC Controller Uninstaller' will start.
6. You have three selections available. Automatic will automatically uninstall the Wireless PC Controller software. Custom will allow you to choose which modifications to make during uninstall. Repair will allow you to reinstall the software if original files are corrupted.  
Note: Custom uninstall is not recommended for the novice user.
7. Select 'Automatic' and then click 'NEXT'.
8. Click 'FINISH' to begin the uninstall. Follow the onscreen prompts to finish the uninstall. During the uninstall process, you may be prompted to disconnect your controller. If this occurs, disconnect the controller and press the 'OK' button. If the message reappears, you should wait several seconds and then click the 'OK' button. Some PCs require several seconds to detect the SGC2910 as disconnected.
9. During the uninstall process a Windows prompt will ask, "Leave game profiles saved on your system?" If you click the 'Yes' button the profiles you created will be backed up in "C:\Program Files\Philips\SGC2910 Game Backup Profiles" folder. If you click the 'No' button then all your created profiles will be deleted. It is recommended that you click the 'Yes' button if you wish to reinstall the SGC2910 software or are upgrading the SGC2910 software to a newer version. This option will allow you to backup your created profiles so they can be loaded when the SGC2910 is reinstalled or upgraded.
10. Once uninstall has finished, the 'SGC2910 Wireless PC Controller Uninstall Program' will automatically close.
11. Once installation has completed, Windows may prompt you to restart your PC. If this occurs please select 'YES'.



## Installation

### Installation procedure for users of Windows Vista

To properly install your SGC2910 Wireless PC Controller, the controller must be connected to your USB port first. Once Windows Vista has properly loaded the HID (human interface device) driver for the SGC2910 you can begin software installation. Carefully follow the steps below.

#### Controller installation for users of Vista

1. Pull the retracting extension cable to desired play length.
2. With your computer turned on and Vista running, connect the SGC2910 Wireless PC Controller's USB connector to one of the USB ports on your PC. The SGC2910 should be connected to a USB port directly on the PC.
3. Vista will automatically detect the SGC2910 Wireless PC controller upon connection. It will be detected as a pop up window on your system tray on the lower right of your screen. The window will say INSTALLING DEVICE DRIVER SOFTWARE. Once install is complete, the following window appears "USB HUMAN INTERFACE DEVICE. Device driver software installed successfully. The controller installation is now complete and you can proceed to the Vista instruction section of your manual.

#### Software installation for users of Vista

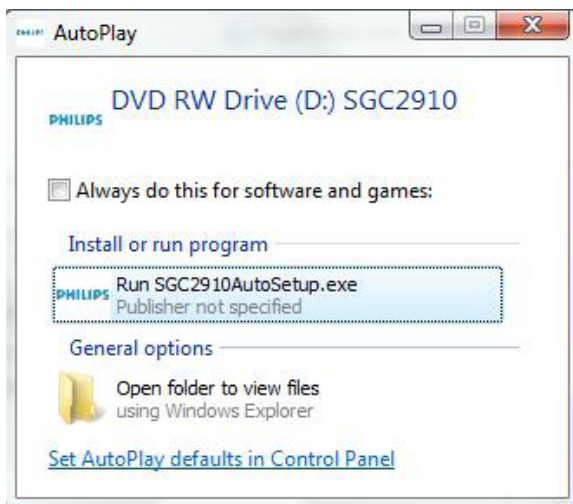
Philips recommends installing the software under an administrator account for an easier installation procedure.

Note: If using a standard user account you will need to enter an administrator's password in the text box of the window below to install the controller software due to the limited privileges of your standard user account. Once you enter the password click on the OK button and jump to step 5 of the Administrator user account procedure and follow the remaining steps.



# Vista 32 Addendum

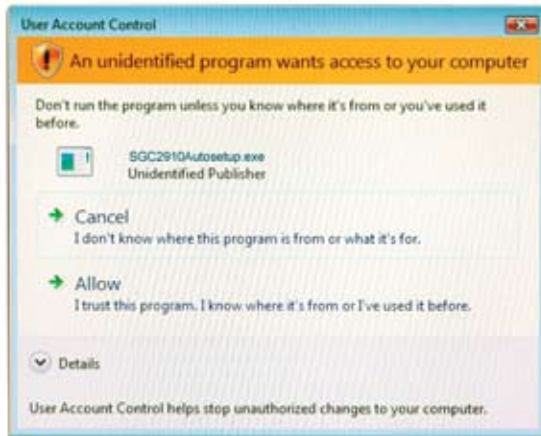
1. The SGC2910 Wireless PC Controller should be connected to your PC before beginning software installation under Windows Vista.
2. Close down all programs that are currently running on your computer.
3. Place the SGC2910 software CD into your CD-ROM drive. If you have auto play enabled, the auto play window will be displayed shortly after inserting the CD into your drive. You may double click on 'Setup for Philips Wireless PC Controller.exe' to begin the software installation.



If auto play is not enabled, click on the Start button, select Computer. Double click on the CD drive where the SGC2910 CD is located. This will launch the installer. Follow the on screen instructions.



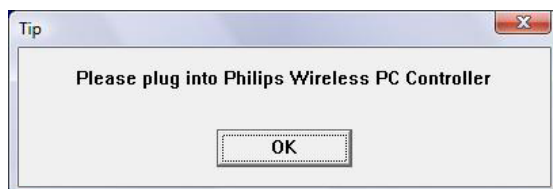
4. You will see the screen below. Click on Allow.



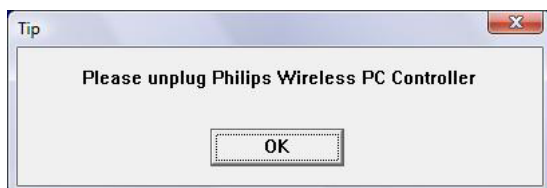
5. Once initialization has finished, the SGC2910 Wireless PC Controller' Install Wizard screen will appear.
6. After reading the notice, press the 'NEXT' button to begin the software installation. You should now see the screen indicating that the software is being installed on your system.
7. Note: During installation of Windows Vista the following Windows security message will appear: "Windows can't verify the publisher of this driver software". Please click "Install this driver software anyway".



8. In Windows Vista the SGC2910 Wireless PC Controller should be connected to your Computer before beginning software installation. If the SGC2910 is not connected to your PC, the following message will appear "Please Plug into the Wireless PC Controller". If this message appears, plug the controller in to your computer. You may need to wait a few seconds for Windows to load the HID drivers. Once completed, you can click the "OK" button.



9. When the PC detects the SGC2910 Wireless PC Controller, the following message will appear and ask you to disconnect the controller. Once you have disconnected the SGC2910, you should click the 'OK' button. If the message reappears you should wait several seconds and then click the 'OK' button. Some PCs require several seconds to detect the SGC2910 as disconnected. Screen will say "Please unplug Philips Wireless PC Controller".



10. You can now click the 'FINISH' button at the following screen to complete the installation.
11. Once installation is complete you can reconnect the SGC2910 to your PCs USB port.

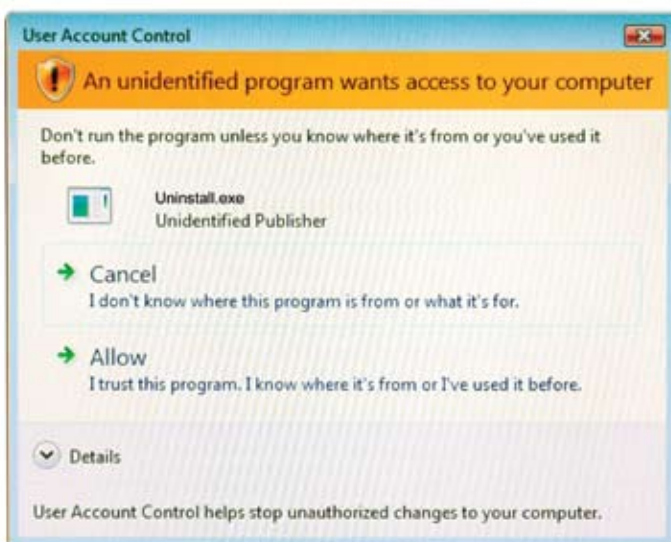
## Uninstall

### Software uninstall for users of Windows Vista

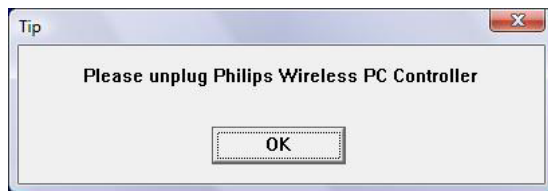
Note: We recommend that you use un-install under an Administrator Account for the simplest process. There are two procedures for uninstalling the the Wireless PC Controller driver software. Both procedures are listed below. Both procedures will remove the SGC2910 software from your system.

#### Uninstall through or change a program panel.

1. Click the start button in the Windows task bar and select Control Panel. Click on uninstall a program. If viewed in Classic View mode, click on the Programs and Features icon.
2. Click on Philips Wireless PC Controller to highlight it. Click on uninstall / change button and the following window appears.



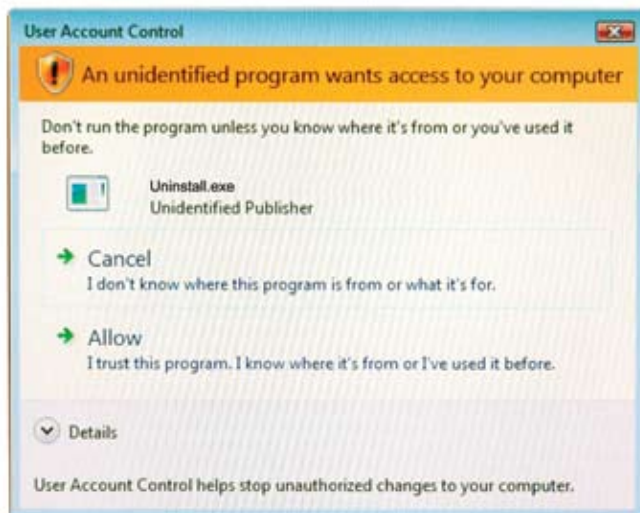
3. Click on allow button to launch the uninstaller.
4. You have three selections available. Automatic will automatically uninstall the the Wireless PC Controller software. Custom will allow you to choose which modifications to make during uninstall. Repair will allow you to reinstall the software if original files are corrupted. Note: Custom uninstall is not recommended for the novice user.
5. Select 'Automatic' and then click 'Next'.
6. Click 'FINISH' to begin the uninstall. Follow the onscreen prompts to finish the uninstall. During the uninstall process, you may be prompted to disconnect your controller. If this occurs, disconnect the controller and press the 'OK' button. If the message reappears, you should wait several seconds and then click the 'OK' button. Some PCs require several seconds to detect the SGC2910 as disconnected.



7. During the uninstall process a Windows prompt will ask, "Leave game profiles saved on your system?" If you click the "Yes" button the profiles you created will be backed up in "C:/Users/Public/Public Documents/SGC2910 Profiles/backup profiles." folder. If you click the "No" button then all your created profiles will be deleted. It is recommended that you click the "Yes" button if you wish to reinstall the SGC2910 software or are upgrading the SGC2910 software to a newer version. This option will allow you to backup your created profiles so they can be loaded when the SGC2910 is reinstalled or upgraded.
8. Once uninstall has finished, the 'SGC2910 Wireless PC Controller Uninstall Program' will automatically close.

## Uninstall thru the SGC2910 Software

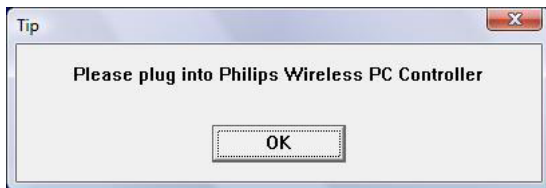
1. Click on Start button. Click on all Programs. Click on Philips folder, click on SGC2910 folder and select Uninstall and the following screen appears.



# Vista 32 Addendum

2. Click on Allow button. The 'SGC2910 Wireless PC Controller Uninstaller' will start.
3. You have three selections available. Automatic will automatically uninstall the the Wireless PC Controller software. Custom will allow you to choose which modifications to make during uninstall. Repair will allow you to reinstall the software if original files are corrupted. Note: Custom uninstall is not recommended for the novice user.
4. Select 'Automatic' and then click 'NEXT'.
5. Click 'FINISH' to begin the uninstall. Follow the onscreen prompts to finish the uninstall. During the uninstall process, you may be prompted to disconnect your controller.

If this occurs, disconnect the controller and press the 'OK' button. If the message reappears, you should wait



several seconds and then click the 'OK' button. Some PCs require several seconds to detect the SGC2910 as disconnected. Note: For standard user accounts you can perform the uninstall process according to the two previous procedures. You will be required to enter an administrators password in the text box of the window below if it appears during the uninstall.



## Troubleshooting

### Windows Troubleshooting

Below are our basic troubleshooting tips. A more detailed F.A.Q. is included on the SGC2910 Software's main directory. The F.A.Q. is in PDF format.

- Make sure the Wireless PC Controller is plugged firmly into your computer's USB port. Try connecting the Wireless PC Controller to a different USB port. Connect the Wireless PC Controller to a USB port on your computer. Do not connect through external hubs.
- Make sure you have properly installed the Wireless PC Controller through your operating system. Open the Gaming Options/Game Controllers applet to verify that the Wireless PC Controller is installed properly and operating correctly. If the SGC2910 is not listed, try disconnecting the controller and plugging it into another USB port. You should also try uninstalling the SGC2910 software and then reinstalling. You must follow the steps correctly to ensure the software is installed properly.
- Make sure you have installed the Wireless PC Controller software. Vibration feedback and Profile Editor will not work unless the SGC2910 software is installed on your PC.
- Make sure the Wireless connection cable is fully extended before connecting the SGC2910 to your PC.
- Do not extend/retract the connection cable while connected to a USB port as this can cause your software title to lose connection with the Wireless PC Controller. If this occurs, wait several seconds and the Wireless PC Controller should automatically reconnect. If this doesn't work try unplugging the USB connector and then reconnecting to the same USB port. If this doesn't work, you will need to exit the PC game and restart it. If this occurs while you are using the SGC2910 with a game profile, the loaded profile will be lost. You would then need to exit the PC game, restart the SGC2910 Profile Editor and reload the profile. You can then restart your PC game.
- If the software title stops responding to the Wireless PC Controller, this indicates that the connection may have been lost due to extending or retracting the connection cable. Wait several seconds and the Wireless PC Controller should automatically reconnect. If this doesn't work try unplugging the USB connector and then reconnecting to the same USB port.
- If your software title freezes or hangs up due to extending or retracting the cable, you will need to try the following:
  - a. Wait several seconds and the Wireless PC Controller should automatically reconnect. If this doesn't work try unplugging the USB connector and then reconnecting to the same USB port.
  - b. If the above tip does not work, then you will have to exit the software title. Press Ctrl and Alt keys down at the same time and then press the Del key. Try closing down the software title. If this does not work you will need to restart your PC.
- The Wireless PC Controller will only vibrate in software titles that support vibration. Contact the game manufacturer to verify. You must have also loaded the SGC2910 software. There are many different force feedback and rumble effects available. However, due to differences in software and hardware design, the Wireless PC Controller may not support all effects. You will find that the range of effects that the Wireless PC Controller supports will vary from game to game.
- Check your software's instruction manual to ensure it supports USB controllers. If the PC game supports USB controllers then you do not need to use the Profile Editor. If it only supports the mouse and keyboard, then you must use the SGC2910 Profile Editor.

## Frequently Asked Questions (FAQ)

### Installation Questions

---

#### Question

The SGC2910 is not listed in Game Controllers/Gaming Options in the Windows Control Panel.

#### Answer 1

The SGC2910 is not connected to the PC.

Verify that the SGC2910 is plugged into a USB port directly on your PC. Do not connect the SGC2910 through USB hubs. The SGC2910 should be connected directly to the PC's USB ports.

#### Answer 2

Try a different USB port.

Try disconnecting the SGC2910 and plugging it into another USB port.

Always connect the SGC2910 to a USB port on the PC.

#### Answer 3

The SGC2910 was not properly installed.

The SGC2910 may not be properly installed. The installation steps will vary depending on your operating system.

Verify that you performed the following.

1. Windows ME and 98SE users must install the software first and then plug the SGC2910 controller to a USB port.
2. Windows XP and 2000 users must plug the SGC2910 controller to a USB port and then they can install the software.

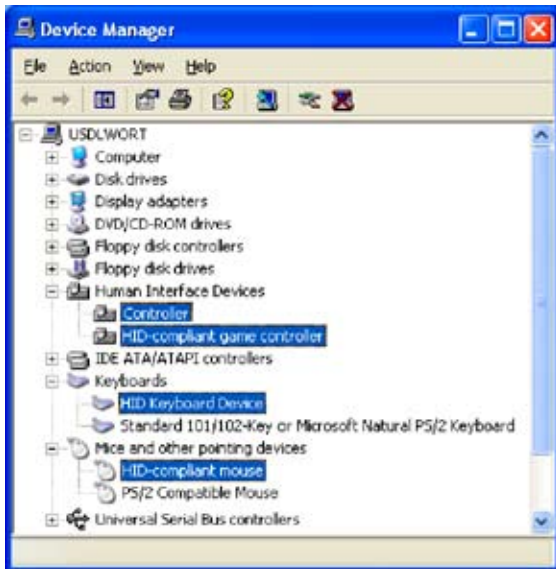
Try uninstalling the SGC2910 software according to the Uninstall instructions included in the SGC2910 instruction manual. Please restart your PC once the software is uninstalled. Then reinstall the controller and software. Please follow the steps according to your operating system.



**Answer 4**

Verify that the SGC2910 is properly installed.

You can confirm that the SGC2910 was properly installed by checking your device manager. Use the following steps to access your device manager. Make sure the SGC2910 is connected to a USB port.



1. In Windows XP and 2000, right click on the “My Computer” icon on your desktop and then click on “Properties”. You should now see the “System Properties” window. Click on the “Hardware” tab and then click on the “Device Manager” button. In Windows ME and 98SE, right click on the “My Computer” icon on your desktop and then click on “Properties”. You should now see the “System Properties” window. Click on the “Device Manager” tab.
2. You should now see the device manager. Verify that the device manager has the following devices listed. (Note: Attached is a screenshot of the entries that should be listed within your respective Windows operating system.)
  - a. In WinXP and Win2000, two new entries called “Philips Controller” and “HID-compliant game controller” will be listed under the Human Interface Device category. In WinME, one new entry called “Philips Joypad Mouse” will be listed under the Human Interface Devices category. In Win98SE, one new entry called “Philips Joypad Mouse” will be listed under the Human Input Devices (HID) category.
  - b. In all Windows operating systems, a new entry should be listed under the Keyboards category. The new entry should be “HID Keyboard Device”.
  - c. In all Windows operating systems, a new entry should be listed under the Mouse category. The new entry should be “HID-Compliant Mouse”.
3. If all these entries are listed, then the SGC2910 has been properly installed. If not, then you will need to uninstall the SGC2910 software by following the Uninstall instructions listed within the SGC2910 Instruction Manual. Then reinstall the software and re-check the device manager to ensure the SGC2910 was properly installed.
4. If the reinstall doesn’t work, you should check and verify that the device manager doesn’t have any Unknown Devices listed. Check the “Human Interface Device” and “Universal Serial Bus controllers” categories. If you see any Unknown Devices you should uninstall them. You should right-click on the “Unknown Device” to highlight it and click on “Uninstall” or “Remove”. The entry should now be removed from the device manager. You should now try reinstalling the software according to the instructions for your operating system.

---

**Question**

When I plug my SGC2910 in and Windows runs through the detection process it asks me for my Windows CD. I do not have a Windows CD as it was not supplied with my computer so what do I do?

**Answer 1**

Check and verify that you have the Windows CD.

If you have the Windows CD, you should insert it into your CD-ROM drive. The actual files that Windows is looking for when you are trying to install the SGC2910 are called Cab files and these are usually found in a directory on your Windows CD (Win98 if you have Windows 98SE or Win9x if you have Windows ME). You will need to select the appropriate CD-ROM directory when asked by Windows. The necessary files will then be copied to your PC.

**Answer 2**

Win98SE and ME may require the Windows CD to complete the installation.

Some PC manufacturers do not provide a Windows CD with their computer when they ship it to the customer. The actual files that Windows is looking for when you are trying to install the SGC2910 are called Cab files and these are usually found in a directory on your Windows CD (Win98 if you have Windows 98 or Win9x if you have Windows ME). However, if the manufacturer did not give you a CD then they may have made a backup of these files somewhere on your hard drive.

The standard location to place these files is the C:\Windows\Options\Cabs directory or, sometimes, simply the C:\Cabs directory. You can also try the C:\Windows\System32\Drivers directory for the location of the files. The last possible location to place these files is C:\Win98 or C:\Win9x.

When the Windows installer for the SGC2910 asks you for your Windows CD simply click OK - it will come back to you saying that it can not find a particular file and at the bottom of the window that comes up it will tell you where it is trying to Copy The Files From in a small window.

Click in this window and delete whatever is in there and try replacing it with one of the above locations. If neither works then you should get in touch with the company who supplied your PC and ask them where your Cab files are kept on your PC.

## General Questions

---

**Question**

How do I know if my PC game supports USB controllers?

**Answer**

Check the recommended system specifications on the game's packaging. Check in the game's instruction manual or readme file. As a last resort you can contact the game publisher for technical support or see if a F.A.Q. can be found on the publisher's website.

---

**Question**

My SGC2910 does not work with my PC game.

**Answer 1**

The PC game doesn't support USB controllers.

If the PC game doesn't support USB game controllers you will need to use our Profile Editor software and create a custom profile. Please consult the SGC2910 instruction manual.

**Answer 2**

The PC game supports USB controllers but the controller still doesn't work.

The SGC2910 will not automatically work with PC games that support USB controllers. You will need to configure the SGC2910 to the game. The procedure for doing this varies from game to game. You need to consult the game's instruction manual or contact the game publisher for instructions.

Usually, you will need to enter the PC game's options or setup menu. Within this menu there should be a "controller configuration" menu. You will need to change the input device to the connected game controller.

The default input device is usually the keyboard. Once this is completed you still need to configure/assign/map the buttons and controls of the SGC2910 to the game. The "controller configuration" menu should display all the gameplay functions of the PC game and the default keys that control these functions. For example, Jump = Space key. Within this screen you should click on the gameplay function you wish to configure and then press the desired button on the SGC2910. The exact procedure for configuring the gameplay functions will vary from game to game. Consult the PC game's instruction manual.

---

**Question**

My SGC2910 does not vibrate with my PC game.

**Answer 1**

PC game doesn't support vibration or force feedback.

You need to verify that the PC game in question supports vibration or force feedback. The majority of PC games do not. The SGC2910 will only work in PC games that support vibration or force feedback.

You should check the game's instruction manual and packaging. Also check the website of the game publisher and developer. If you still can not find any information you should try contacting the game publisher.

Most PC games that only support the mouse and keyboard as input devices do not support vibration feedback. Please keep this in mind.

**Answer 2**

PC game supports vibration feedback but the SGC2910 still doesn't vibrate.

Please make sure you have installed the SGC2910 software from the SGC2910 CD. Please test the controller's vibration in the "Gaming Options/Game Controllers" applet found in the Windows Control Panel. If the SGC2910's vibration feedback works when tested then the problem is with the PC game.

There are many different force feedback and rumble effects available. The supported effects will vary from game to game. Unfortunately, due to differences in software and hardware design, the PC game controller may not support all the effects of the PC game. You will find that the range of effects that the Wireless PC Controller supports will vary from game to game.

---

**Question**

Can I use the SGC2910 as a standard USB game controller games without the Profile Editor on PC games that support USB controller?

**Answer**

Yes you can.

This is actually recommended by us. You should not use the Profile Editor if your game supports USB game controllers. Verify that you are using our default profile and then configure the SGC2910 within the PC game's "controller configuration" menu.

**Question**

My SGC2910 does not work in my MS-DOS based game.

**Answer**

USB Devices do not function in MS-DOS

USB devices do not function under the MS-DOS environment.

There is no way to get an MS-DOS game to recognize a USB device.

---

**Question**

I extended the cable of my SGC2910 and now the SGC2910 stopped working in my PC Game or my PC game froze.

**Answer**

Do not extend or retract the connection cable of the SGC2910 while it is connected to a USB port.

The cable length should be adjusted before you connect the SGC2910 to your USB port. Adjusting the length while the SGC2910 is connected to a USB port can cause your PC and game to lose connection with the SGC2910. If this occurs, you can try the tips below.

- If the PC Game stops responding to the SGC2910 coil, this indicates that the connection may have been lost due to extending or retracting the connection cable. Wait several seconds and the SGC2910 should automatically reconnect. If this doesn't work, you will need to exist the PC game and restart it. If this occurs while you are using the SGC2910 with a game profile, the loaded profile will be lost. You would then need to exist the PC game, restart the SGC2910 Profile Editor and reload the profile. You then can restart your PC game.
- If your software title freezes or hangs up due to extending or retracting the cable you will need to try the following. Wait several seconds and the SGC2910 should automatically reconnect. If this doesn't work try unplugging the USB connector and then reconnecting to the same USB port. If the above tip does not work, then you will have to exist the software title. Press Ctrl and Alt keys down at the same time and then press the Del key. Try closing down the software title. If this does not work you will need to restart your PC.

Please do not extend or retract the SGC2910's cable while it is connected to the USB port. If you need to adjust the length you should exit the PC game. Unplug the SGC2910 from your USB port and adjust the cable to the desired length. Plug the SGC2910 to your USB port and restart the PC game. If you were using a custom profile you will need to restart the SGC2910 Profile Editor and reload the same profile.

---

**Question**

The Enter and Esc buttons on my SGC2910 do not work. What do they do?

**Answer**

SGC2910 software must be installed.

You must install the SGC2910 software. If the software is not installed, these two buttons will not function. The Enter and Esc buttons will provide the same function of the Enter and Esc keys on your keyboard. Enter and Esc is usually used to navigate through the game menus.

## Profile Editor Software Questions

---

### Question

I received a “Can’t connect to SGC2910 Wireless PC Controller Controller!” when I click on the SGC2910 icon.

### Answer

The SGC2910 is not connected to your PC’s USB port.

Verify that the SGC2910 is directly connected to a USB port on your PC. The SGC2910 must be connected in order to use the Profile Editor.

---

### Question

What does the profile editor do?

### Answer

The Profile Editor allows the SGC2910 to emulate mouse and keyboard commands on the controller. This makes the SGC2910 compatible with all computer games, even those that do not support controllers.

---

### Question

Why aren’t my controls working correctly in my PC game? The SGC2910 acts erratically when I use the Profile Editor.

### Answer 1

The game may support USB game controllers.

Check to verify if your PC game supports USB game controllers. If it does, you should not use the Profile Editor with the PC game. You should only use the default profile when your PC game supports USB game controllers. When you assign a keyboard key to the controller’s button, pressing that button when now send the controller button command and the keyboard key command. This isn’t a problem with PC games that only support the mouse and keyboard. This PC game will only register the keyboard key. However, a game that supports USB game controllers will register the controller button and keyboard key. So the game will assume you are pressing a controller button and keyboard key at the same time.

If you desire to use a custom profile with these games, you can check if the PC game has a joystick/controller enable option. If it does, try disabling it and then see if you can use the Profile Editor with the PC game.

### Answer 2

You may have loaded the wrong profile for your controller.

Check and verify that you are using the correct profile for the game you desire to play. You should get into the habit of checking the profile before you start your PC game. This will ensure the SGC2910 is correctly configured for the game you desire to play.

When you start your PC or reboot you must start the Profile Editor and load the desired profile. Also, if the PC loses connection with your SGC2910 you will need to start the Profile Editor and load the desired profile.

---

**Question**

The SGC2910's analog sticks provide poor control when mouse movement is assigned to the analog sticks. The mouse cursor moves too slow, too rapidly, or erratically.

**Answer**

Adjust the Velocity and Acceleration Sliders

Open the Profile Editor. Click the 'Speed' button the main menu to access the Mouse Speed Adjust sub-menu. You try adjusting the Velocity and Acceleration sliders to improve the mouse movement of the analog sticks. Once you make an adjustment try it out by turning the mouse movement mode on. Unfortunately, due to differences in the design of the analog stick and mouse you may never be able to achieve perfect mouse movement.

---

**Question**

I want to use my SGC2910 in First Person Shooters games. I want my SGC2910 to perform similarly to my Playstation2 controller. How can I configure the SGC2910 to do this?

**Answer**

Most First Person Shooter games (FPS) are designed to only support the mouse and keyboard. Most developers consider the mouse and keyboard to provide the best control, so controller support is usually very basic or not included.

Currently, our Profile Editor will not allow you to setup the SGC2910 so it emulates the Playstation2 control setup in FPS game. Currently, only mouse movement can be assigned to the SGC2910 analog sticks. You can configure the D-pad to the WASD keys and the right analog stick to mouse movement. This will allow you to use the SGC2910 d-pad to control character movement and the right analog stick to control the camera movement.

---

**Question**

Can I assign a keyboard key to analog sticks of the SGC2910?

**Answer**

No you cannot.

You can only assign mouse movement to the analog sticks.

---

**Question**

When I use the Profile Editor, my SGC2910 does not vibrate with my PC game.

**Answer**

Most keyboard and mouse only PC games do not support vibration feedback.

Unfortunately, most games that only support the mouse and keyboard do not support vibration feedback. If you must use the Profile Editor with your PC game, it means the game most likely doesn't support vibration feedback. However, contact the game publisher for verification.

---

If you require further assistance with your Wireless PC Controller, please contact Tech Service department through either of the following means:

## Technical Support

For Technical Support send an email with the model number of the product and a detailed description of your problem to:

Email: [accessorysupport@philips.com](mailto:accessorysupport@philips.com)

## FCC Warning

This equipment has been tested and found to comply with the limits for a Class B digital device pursuant to Part 15 of the FCC Rules. These limits are designed to provide reasonable protection against harmful interference in a residential installation. This equipment generates, uses and can radiate radio frequency energy and, if not installed and used in accordance with the instructions, may cause harmful interference to radio communications. However, there is no guarantee that interference to radio or television reception, which can be determined by turning the equipment off and on, the user is encouraged to try to correct the interference by one or more of the following measures:

- Reorient or relocate the receiving antenna.
- Increase the separation between the equipment and receiver.
- Connect the equipment into an outlet on a circuit different from that to which the receiver is connected
- Consult the dealer or an experienced radio/TV technician for help.

**CAUTION:** Any changes or modifications not expressly approved by the grantee of this device could void the user's authority to operate the equipment.

Windows® is a registered trademark of Microsoft®.

This product is not sponsored or endorsed by the companies mentioned herein.

©2007 Philips Accessories and Computer Peripherals

All rights reserved. All trade names and registered trademarks are property of the respective manufacturers listed.

Warranty/Garantie/Záruka: [www.philips.com/support](http://www.philips.com/support)



Specifications are subject to change without notice.  
Trademarks are the property of Koninklijke Philips Electronics N.V. or their respective owners.  
2007© Koninklijke Philips Electronics N.V. All rights reserved.