

## RANGE COMPOSITION

A range of hoods supplementing the 'inductive emission' principle and automatic filter washing. Untreated air is introduced inside to partly compensate for that removed. This results in better drawing of fumes towards the filter surface and reduced air-treatment costs. The inside filters have water sprayer nozzles controlled by the special panel which controls washing functions. The range consists of hoods with 5 different lengths (2400, 2800, 3200, 3600 and 4000 mm) and 2600 mm deep.



640257

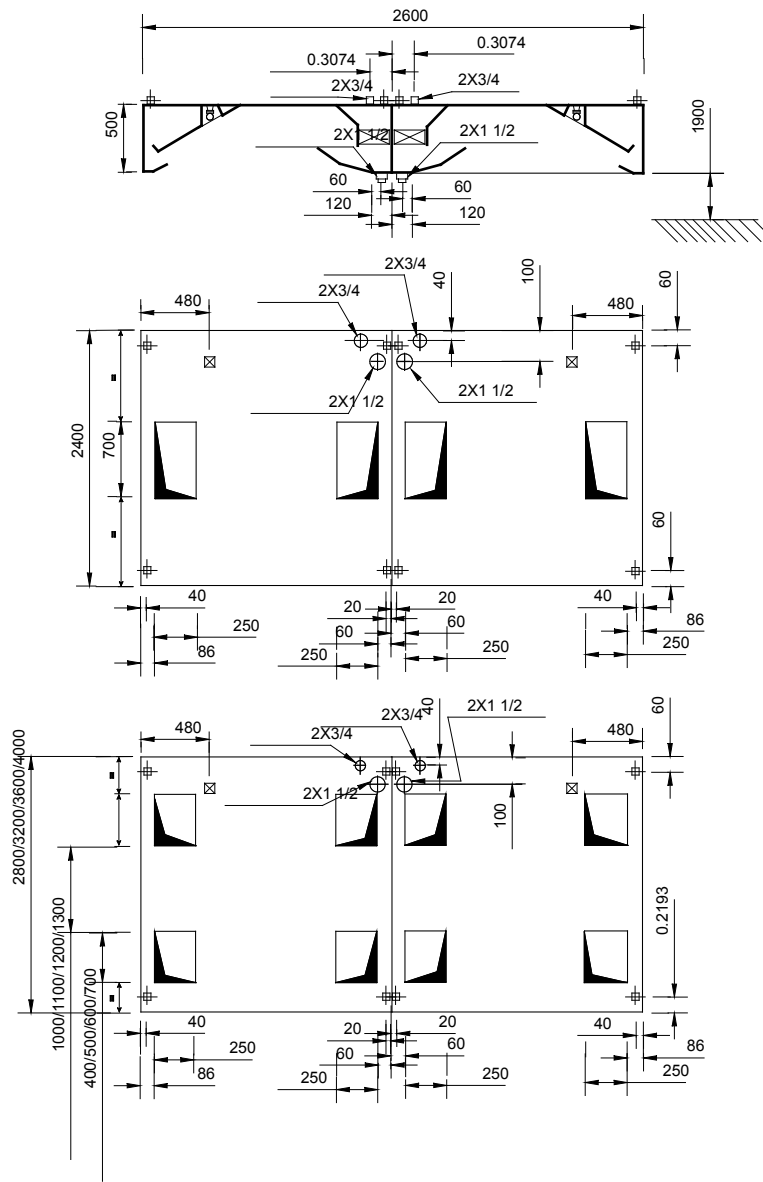
# SUPERTREDILWASH - SW line - 2600mm

## 304 AISI CENTRAL MODULAR HOODS **ZANUSSI** PROFESSIONAL

### FUNCTIONAL AND CONSTRUCTION FEATURES

- ◆ Constructed entirely in 304 AISI stainless steel.
- ◆ Constructed as 2 separate wall units to join on site back to back.
- ◆ Compensated flow exhaust system (air inlet from outdoors).
- ◆ Automatic built-in filter-washing.
- ◆ Supplied with "CHICANE" filter packs in 304 AISI stainless steel with built-in lighting and 2 drain pipes diam.= 1 1/2" in 304 AISI stainless steel.
- ◆ Brass nozzles with full cone-shaped jets and fast joints in stainless steel complete with gasket and nylon connector.
- ◆ Water pipes in 304 AISI stainless steel.
- ◆ All parts in contact with the inlet air flow, at external temperature, are insulated to avoid condensation.
- ◆ Eyebolts and screw anchors for ceiling installation.
- ◆ Heating and air conditioning costs reduced up to 60%.

TECHNICAL DATA					
CHARACTERISTICS	MODELS				
	STWC2624 640255	STWC2628 640256	STWC2632 640045	STWC2636 640257	STWC2640 640258
External dimensions - mm					
width	2400	2800	3200	3600	4000
depth	2600	2600	2600	2600	2600
height	500	500	500	500	500
Air Capacity - mc/h	7900	9200	10500	11800	13200
Power - kW					
installed-electric	0.32	0.48	0.48	0.64	0.64
Net weight - kg.	314	358	400	358	486
Supply voltage	220 V, 1N, 50/60	220 V, 1N, 50/60	220 V, 1N, 50/60	220 V, 1N, 50/60	220 V, 1N, 50/60



**LEGEND**

	STWC2624 640255	STWC2628 640256	STWC2632 640045	STWC2636 640257	STWC2640 640258
C - Water drain	1"1/2	1"1/2	1"1/2	1"1/2	1"1/2
I - Electrical connection	220 V, 1N, 50/60	220 V, 1N, 50/60	220 V, 1N, 50/60	220 V, 1N, 50/60	220 V, 1N, 50/60

**OPTIONAL ACCESSORIES**

ACCESSORIES	MODELS				
	STWC2624 640255	STWC2628 640256	STWC2632 640045	STWC2636 640257	STWC2640 640258
EXTRACTION PLENUM FOR HOOD 2400 MM	640138				
EXTRACTION PLENUM FOR HOOD 2800 MM		640139			
EXTRACTION PLENUM FOR HOOD 3200 MM			640140		
EXTRACTION PLENUM FOR HOOD 3600 MM				640141	
EXTRACTION PLENUM FOR HOOD 4000 MM					640142
EXTRACTION PLENUM FOR MODUL.HOOD 2400 MM	640143				
EXTRACTION PLENUM FOR MODUL.HOOD 2800 MM		640144			
EXTRACTION PLENUM FOR MODUL.HOOD 3200 MM			640145		
EXTRACTION PLENUM FOR MODUL.HOOD 3600 MM				640259	
EXTRACTION PLENUM FOR MODUL.HOOD 4000 MM					640264
GALVAN. AIR INLET PLENUM FOR HOOD 2400MM	640374				
GALVAN. AIR INLET PLENUM FOR HOOD 2800MM		640375			
GALVAN. AIR INLET PLENUM FOR HOOD 3200MM			640376		
GALVAN. AIR INLET PLENUM FOR HOOD 3600MM				640377	
GALVAN. AIR INLET PLENUM FOR HOOD 4000MM					640378
WASH-UP CONTROL PANEL-1 ZONE 60X20X40 CM	641141	641141	641141	641141	641141
WASH-UP CONTROL PANEL-2 ZONES 60X20X40CM	641142	641142	641142	641142	641142
WASH-UP CONTROL PANEL-3 ZONES 60X20X40CM	641143	641143	641143	641143	641143
WASH-UP CONTROL PANEL-4 ZONES 60X20X40CM	641144	641144	641144	641144	641144



www.zanussiprofessional.com