

RANGE COMPOSITION

A range of hoods supplementing the 'inductive emission' principle and automatic filter washing.

Untreated air is introduced inside to partly compensate for that removed. This results in better drawing of fumes towards the filter surface and reduced air-treatment costs. The inside filters have water sprayer nozzles controlled by the special panel which controls washing functions. The range consists of hoods with 8 different lengths (1200, 1600, 2000, 2400, 2800, 3200, 3600 and 4000 mm) and 1500 mm deep.



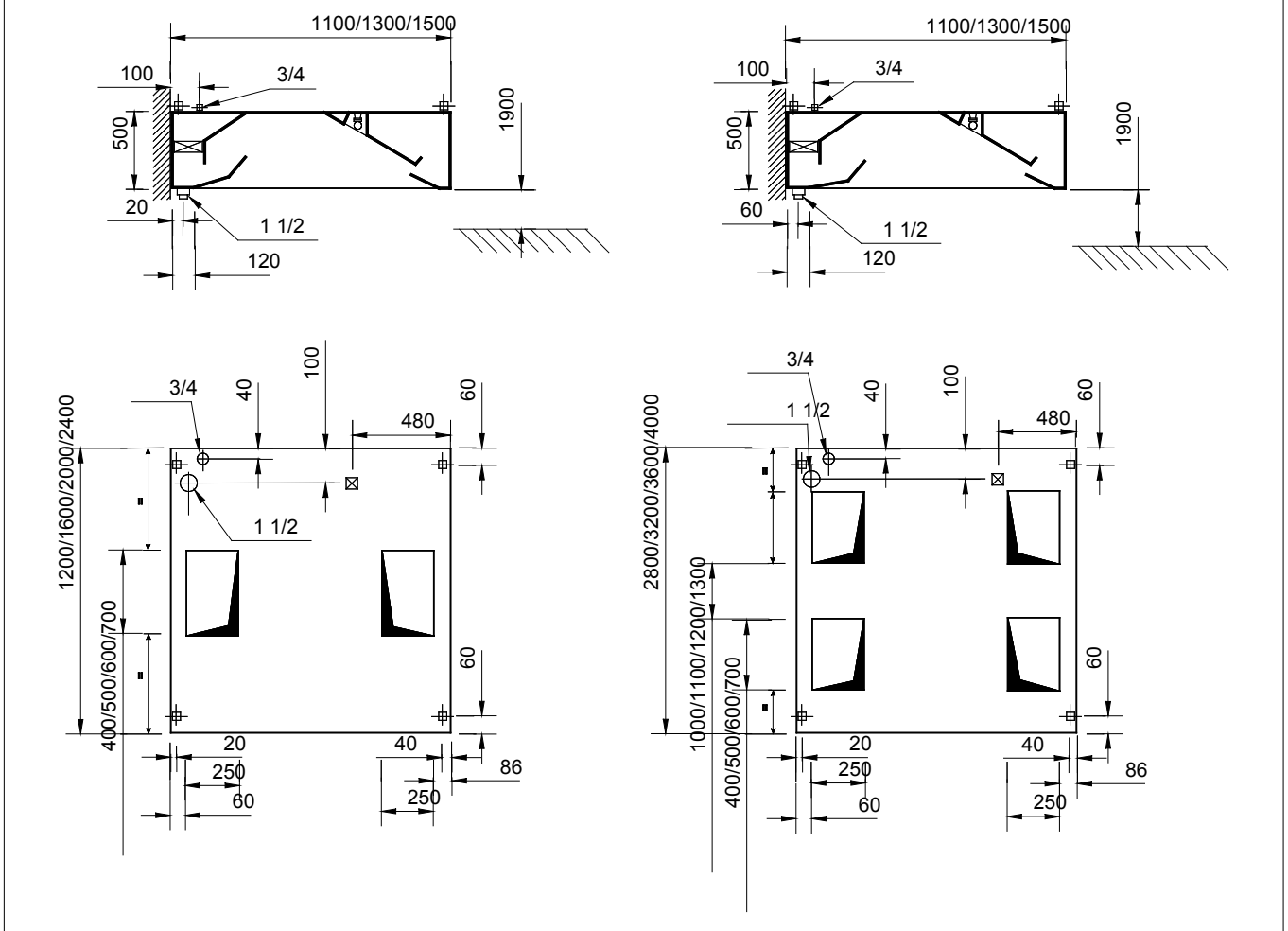
SUPERTREDILWASH - SW line - 1500mm

304 AISI WALL TYPE HOODS **ZANUSSI** PROFESSIONAL

FUNCTIONAL AND CONSTRUCTION FEATURES

- ◆ Constructed entirely in 304 AISI stainless steel.
- ◆ Compensated flow exhaust system (air inlet from outdoors).
- ◆ Automatic built-in filter-washing.
- ◆ Supplied with "CHICANE" filter packs in 304 AISI stainless steel with built-in lighting and drain pipe diam.= 1 1/2" in 304 AISI stainless steel.
- ◆ Brass nozzles with full cone-shaped jets and fast joints in stainless steel complete with gasket and nylon connector.
- ◆ Water pipes in 304 AISI stainless steel.
- ◆ All parts in contact with the inlet air flow, at external temperature, are insulated to avoid condensation.
- ◆ Eyebolts and screw anchors for ceiling installation.
- ◆ Heating and air conditioning costs reduced up to 60%.

TECHNICAL DATA								
CHARACTERISTICS	MODELS							
	STWP1512 641280	STWP1516 641281	STWP1520 641282	STWP1524 641283	STWP1528 641284	STWP1532 641285	STWP1536 641286	STWP1540 641287
External dimensions - mm								
width	1200	1600	2000	2400	2800	3200	3600	4000
depth	1500	1500	1500	1500	1500	1500	1500	1500
height	500	500	500	500	500	500	500	500
Air Capacity - mc/h	2000	2700	3300	4000	4700	5300	6000	6600
Inlet Air Capacity - mc/h	1500	2010	2220	2400	2760	3180	3600	3960
Net weight - kg.	96	117	136	160	182	203	225	246



LEGEND								
	STWP1512 641280	STWP1516 641281	STWP1520 641282	STWP1524 641283	STWP1528 641284	STWP1532 641285	STWP1536 641286	STWP1540 641287
C - Water drain	1"1/2	1"1/2	1"1/2	1"1/2	1"1/2	1"1/2	1"1/2	1"1/2
I - Electrical connection	220 V, 1N, 50/60	220 V, 1N, 50/60	220 V, 1N, 50/60	220 V, 1N, 50/60	220 V, 1N, 50/60	220 V, 1N, 50/60	220 V, 1N, 50/60	220 V, 1N, 50/60

OPTIONAL ACCESSORIES								
ACCESSORIES	MODELS							
	STWP1512 641280	STWP1516 641281	STWP1520 641282	STWP1524 641283	STWP1528 641284	STWP1532 641285	STWP1536 641286	STWP1540 641287
EXTRACTION PLENUM FOR HOOD 2400 MM				640138				
EXTRACTION PLENUM FOR HOOD 2800 MM					640139			
EXTRACTION PLENUM FOR HOOD 3200 MM						640140		
EXTRACTION PLENUM FOR HOOD 3600 MM							640141	
EXTRACTION PLENUM FOR HOOD 4000 MM								640142
GALVAN. AIR INLET PLENUM FOR HOOD 2400MM				640374				
GALVAN. AIR INLET PLENUM FOR HOOD 2800MM					640375			
GALVAN. AIR INLET PLENUM FOR HOOD 3200MM						640376		
GALVAN. AIR INLET PLENUM FOR HOOD 3600MM							640377	
GALVAN. AIR INLET PLENUM FOR HOOD 4000MM								640378
WASH-UP CONTROL PANEL-1 ZONE 60X20X40 CM	641141	641141	641141	641141	641141	641141	641141	641141
WASH-UP CONTROL PANEL-2 ZONES 60X20X40CM	641142	641142	641142	641142	641142	641142	641142	641142
WASH-UP CONTROL PANEL-3 ZONES 60X20X40CM	641143	641143	641143	641143	641143	641143	641143	641143
WASH-UP CONTROL PANEL-4 ZONES 60X20X40CM	641144	641144	641144	641144	641144	641144	641144	641144



www.zanussiprofessional.com