

Panasonic®

Stereo Radio Cassette Player RQ-SX50V Operating Instructions



This manual was printed with soy based ink.

Before connecting, operating or adjusting this product, please read these instructions completely. Please save this manual.

P

Panasonic Consumer Electronics Company, Division of Matsushita Electric Corporation of America
One Panasonic Way Secaucus, New Jersey 07094
<http://www.panasonic.com>

Panasonic Sales Company, Division of Matsushita Electric of Puerto Rico, Inc. ("PSC")
Ave. 65 de Infanteria, Km. 9.5 San Gabriel Industrial Park, Carolina, Puerto Rico 00985

RQT4503-P
F0398E0 (D)

Specifications

RADIO

Frequency range: FM: 87.9–107.9 MHz (0.2 MHz steps)
87.5–108.0 MHz (0.1 MHz/0.05 MHz steps)
AM: 520–1710 kHz (10 kHz steps)
522–1629 kHz (9 kHz steps)

CASSETTE PLAYER

Track system: 4 track, 2 channel, stereo
Frequency range (Normal/High/Metal): 40–18000 Hz

GENERAL

Output jack: PHONES; 300
Power requirement:
Rechargeable battery: DC 1.2 V (included rechargeable battery)
Battery: DC 1.5 V (one R6/LR6, AA, UM-3 battery)
Dimensions (W×H×D): 108.6×80.2×21.9 mm (4 1/4"×3 1/8"×7/8")
Weight (with rechargeable battery): 178 g (6.3 oz.)

CHARGER

Input: AC 120 V, 60 Hz
Output: DC 350 mA, 1.2 V

Play time:

[When used in hold mode, at 25°C (77°F) temperature and on a flat and stable surface]

Battery(-ies)	Tape playback	Radio reception
Rechargeable battery*	About 15 hours	About 14 hours
Panasonic alkaline battery	About 51 hours	About 47 hours
Rechargeable battery* and Panasonic alkaline battery	About 65 hours	About 60 hours

*When the included rechargeable battery is fully recharged (2 hours required).
•The play time may be less depending on the operating conditions.

Note

Specifications are subject to change without notice.
Weight and dimensions are approximate.

Supplied Accessories

- ① Stereo earphones (RFEV316P-K1S)
- ② Remote control (RFEV012P-KS)
- ③ Charger (RP-BC156APY)
- ④ Rechargeable battery (RP-BP61PYS1) (In the carrying case (5))
- ⑤ Rechargeable battery carrying case (RFA0475-Q)
- ⑥ Dry cell battery case (RFA0617-H)

•To order accessories contact 1-800-211-7262 or web site (<http://www.panasonic.com>).

•Use numbers indicated in parentheses when asking for replacement parts.

Power Sources

Rechargeable battery [4]

For initial use after purchase or after a long interval (more than three months), be sure to recharge the rechargeable battery.

A full charge, which takes about 2 hours, enables you to enjoy about 15 hours of tape playback or about 14 hours of radio reception (at 25°C).

Dry cell battery [6]

Battery condition indicators [5]

When the battery becomes weak
The indicators will flash.

Recharge the rechargeable battery or replace the dry cell battery with a new one.

To confirm the indicators in the stop mode

Press •BATT CHECK.

To extend playback time

Install both types of battery (rechargeable and dry cell battery) in the unit.

Before Use

Connecting the stereo earphones and the remote control [1]

Remote control operation [2]

- Before using VOL, be sure to adjust VOLUME on the main unit to the "5–7" position.
- The operation tone, "beep", sounds whenever a remote control button is pressed. The confirmation tone sounds after the operation tone.
- The beep tones, which are emitted when the main button is pressed, indicate that a cassette has not been inserted.

Hold function [3]

This function prevents the unit from operating in error.

Use this function to prevent the following situations:

- A. While not in use, playback or radio reception starts inadvertently and the battery runs out.
 - B. Playback or radio reception is interrupted while the unit is in use.
- The function on the main unit and the remote control are independent of each other.

When a button on the main unit is pressed in the hold state

"HOLD" appears on the display and flashes for about 3 seconds.

Listening to Tapes

A RECHARGEABLE BATTERY

First of all recharge.

Push until the battery clicks into place.

B DRY CELL BATTERY

R6/LR6, AA, UM-3

C BATTERY CONDITION

+BATT CHECK AUTO

D STEREO EARPHONES & REMOTE CONTROL

Plug type: 3.5 mm stereo

Plug in firmly.

E

Main button

VOL

F HOLD FUNCTION

To hold	To release

3

G

1

2

3

4

5

Playback side

Main button

MODE

SOUND SEL

REW FF

OFF

VOLUME

	Press.		During playback
	Press and hold.		In the stop mode

G This unit is equipped with an auto tape select function, so you can use normal, high or metal position tapes.

1 Insert the cassette tape.

Tapeslack is wound automatically when the cover is closed and playback will be ready to start from the forward side.

(a) Forward side
(b) Reverse side

2 Connect the stereo earphones and the remote control.

3 Release hold.

4 Press ◀ ▶ (main unit) or the main button (remote control).

5 Adjust the volume.

To stop playback:

Press ■ OFF (main unit) or the main button (remote control).

4

Other play methods

	From the main unit	From the remote control
[F] To change sides		
[I] Wind the tape [J] TPS		
[A]		
[K] Dolby B NR		

	Only from the main unit
[L] Play mode [M] Blank-Skip	
[N] ONE-REPEAT	
[B]	
	Only from the remote control
[O] INTRO-SCAN	
[C]	

To change sides **[F]**

Wind the tape **[I]**

Tape program sensor (TPS) **[J]**

You can skip as many programs as the number of times (up to 9) the button is pressed.

•The number of programs is changed when the button is pressed while searching.

[A] To switch to playback

Dolby B NR **[K]**

Press and hold to display "ON" to reduce noise on tapes recorded with Dolby B NR to 1/3.

Dolby noise reduction manufactured under license from Dolby Laboratories Licensing Corporation. "DOLBY" and the double-D symbol are trademarks of Dolby Laboratories Licensing Corporation.

To change the play mode **[L]**

(Available only from the main unit)
BS : Blank skip function works.

: Both sides of the tape are played continuously.

: Both the forward and reverse sides are played through once.

Blank-Skip: **[M]**

When a silent part of more than 13 seconds is detected during playback, the tape fast forwards until the next program is found. (If it is not found, play begins from the start of the opposite side.)

To repeat the current program (ONE-REPEAT) **[N]**

(Available only from the main unit)

[B] To cancel ONE-REPEAT

ONE-REPEAT is also cancelled when the tape operations are switched.

To search for a program on the tape (INTRO-SCAN) **[O]**

(Available only from the remote control)

Allows you to listen to the intro of each program for about 10 seconds in order.

[C] When the desired program is found

CAUTION:

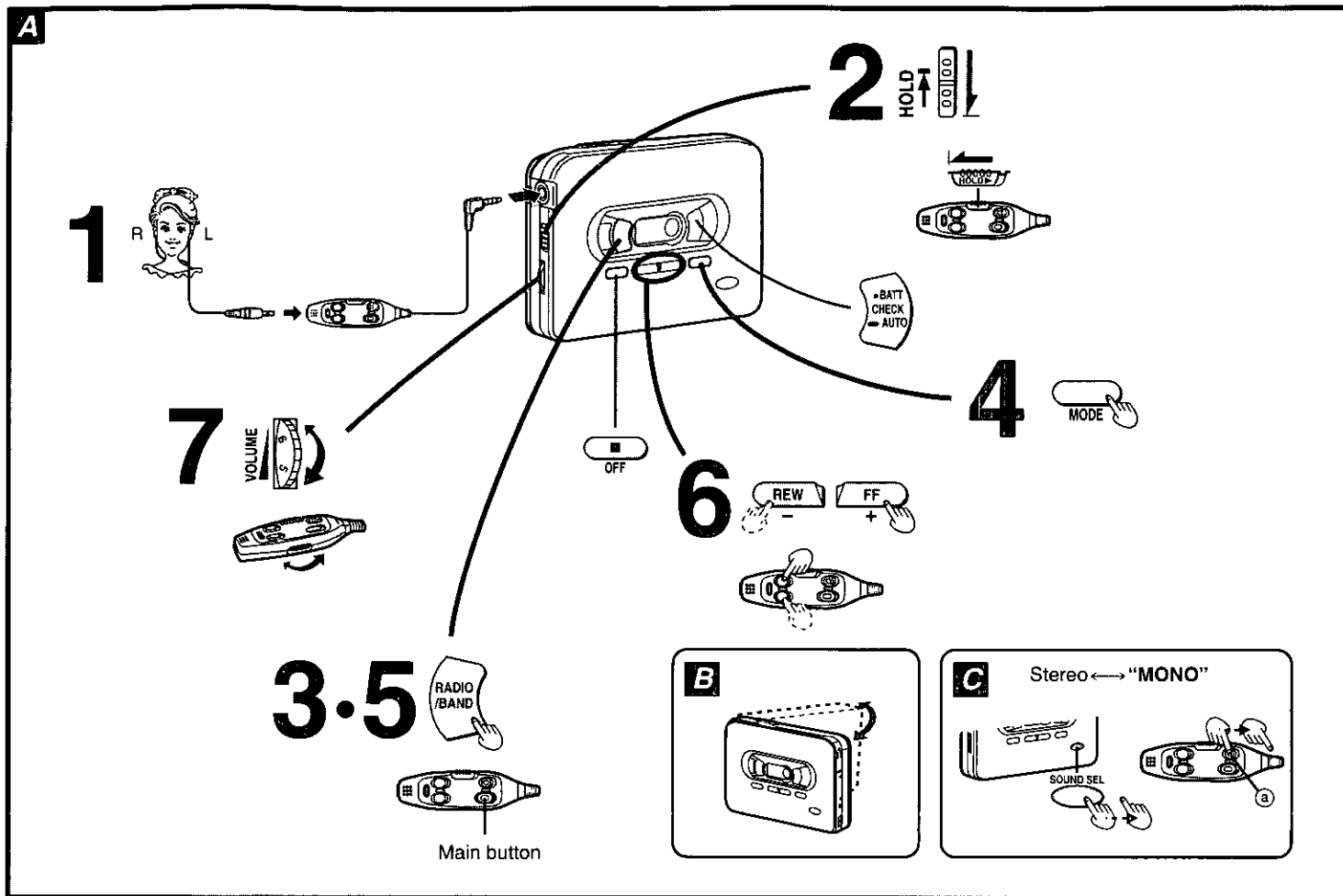
This equipment has been tested and found to comply with the limits for a Class B digital device, pursuant to Part 15 of the FCC Rules.

These limits are designed to provide reasonable protection against harmful interference in a residential installation. This equipment generates, uses and can radiate radio frequency energy and, if not installed and used in accordance with the instructions, may cause harmful interference to radio communications. However, there is no guarantee that interference will not occur in a particular installation. If this equipment does cause harmful interference to radio or television reception, which can be determined by turning the equipment off and on, the user is encouraged to try to correct the interference by one of the following measures:

- Reorient or relocate the receiving antenna.
- Increase the separation between the equipment and receiver.
- Connect the equipment into an outlet on a circuit different from that to which the receiver is connected.
- Consult the dealer or an experienced radio/TV technician for help.

FCC Notice: This system complies with new Part 15, except for the radio receiver, which complies with old Part 15, Subpart C of the FCC Rules. Operation is subject to the following two conditions: (1) This device may not cause harmful interference, and (2) this device must accept any interference received, including interference that may cause undesirable operation. The radio receiver is not subject to above item (2).

Any unauthorized changes or modifications to this equipment would void the user's authority to operate this device.



Memory presetting

(Available only from the main unit)

Frequencies of up to 20 radio stations (10 each for AM and FM) can be stored in the memory.

Preparation

- Release the hold state.
- Connect the earphones (the cord of the earphones acts as an FM antenna) when storing frequencies of FM stations in the memory.

■ Auto memory function

The frequencies in each band are automatically stored in the memory in ascending order, starting with the lowest frequency.

- ① Press RADIO/BAND to switch on the power.
- ② Press MODE to display "MEMO".
- ③ Press and hold **■** AUTO. The confirmation beep sounds after each frequency is stored.

When "error" appears on the display of the main unit:

Correct presetting may not be possible in cases where the broadcast signals are too strong or too weak. In such cases, carry out presetting manually. (See following.)

■ Manual memory function

- ① Press RADIO/BAND to switch on the power.
- ② Press MODE to display "MEMO".
- ③ Press RADIO/BAND to select the band.
- ④ Press and hold MODE until the displayed frequency flashes.
- ⑤ Press + or - to select the broadcast frequency.
- ⑥ Press MODE so that "M" and the memory number flashes.
- ⑦ Press + or - to select the memory number to store the frequency.
- ⑧ Press MODE.

■ To erase an unnecessary station from the memory

- ① Press RADIO/BAND to switch on the power.
- ② Press MODE to display "MEMO".
- ③ Press RADIO/BAND to select the band.
- ④ Press + or - to select the memory number to be removed.
- ⑤ Press and hold MODE until the displayed frequency flashes.
- ⑥ Press and hold MODE until "M" and "—" flashes.
- ⑦ Press MODE.

Listening operation

- 1 Connect the stereo earphones and the remote control.
- 2 Release hold.
- 3 Press RADIO/BAND (main unit) or press and hold the main button (remote control) to switch on the power.

- 4 Press MODE to display "MEMO" (MEMO mode) or not (free mode).
MEMO mode: To listen to a preset station
Free mode: To listen to a desired station (not preset)

- 5 Press RADIO/BAND (main unit) or the main button (remote control) to select the band.
Each press changes the indication between AM and FM.
- 6 Press + or - to select the desired station.
Memory number (only in the MEMO mode) and broadcast frequency changes.

- 7 Adjust the volume.

To turn off the radio:
Press **■** OFF (main unit) or press and hold the main button (remote control).

To obtain better reception When listening to AM broadcasts: **E**

As the built-in ferrite antenna is used, try various directions to obtain optimum reception.

When listening to FM broadcasts:

As the cord of the earphones acts as the FM antenna, extend it as far as possible rather than leaving it coiled.

To select stereo or monaural FM **Q**

Press and hold SOUND SEL (main unit) or the button **Q** (remote control) during FM reception.

When there is noise during FM reception:

Select "MONO".

The sound becomes monaural, but noise is reduced.

Automatic memory scan (for MEMO mode)

After selecting a band, press and hold + or - until the frequency displayed begins to scroll on the main unit.

This function allows you to listen to each of the broadcast stations stored in the memory, for about 5 seconds in order.

When a broadcast you like is being received:

Press + or - again.

To release the scan:

Press **■** AUTO on the main unit.

Automatic tuning (for free mode)

When selecting a broadcast frequency, press and hold + or - until the frequency displayed begins to scroll on the main unit. It automatically stops when a station is located.

To stop automatic tuning:

Press + or - again.

When using overseas

(Available only from the main unit)

Allocations need to be changed according to the area.

1. Press RADIO/BAND to switch on the power.
2. Press RADIO/BAND for more than 5 seconds to display the step.
3. Press + or - to select the step. Each press changes the indication to "FM U0.2", "FM U0.1" or "E".

"FM U0.2" (original setting):

FM 0.2 MHz,
AM 10 kHz

"FM U0.1": FM 0.1 MHz,
AM 10 kHz

"E": FM 0.05 MHz,
AM 9 kHz

4. Press and hold MODE to confirm the step. The display shows the lowest AM frequency.

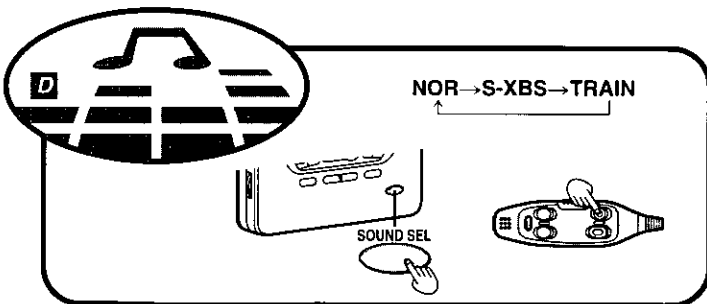
To return to the previous frequency step:

Repeat the steps above.

Note:

Converting the frequency step erases the stations previously stored in the memory.

To Change the Tone **D**



NOR:
Cancels the EQ effect. Normal sound.

S-XBS:
Boosts the low frequency range.

●If distortion occurs, turn down the volume.

TRAIN:
Cuts down the audible level of sound which may disturb those around you.

- Avoid using or placing this unit near sources of heat. Do not leave it in an automobile exposed to direct sunlight for a long period of time with the doors and windows closed.

- To avoid product damage, do not expose this product to rain, water or other liquids.

Rechargeable battery and charger

- Use only the included charger when recharging.
- During recharging, it is normal for the charger and the rechargeable battery to become slightly warm.
- Do not leave the charger turned on for more than 12 hours at one time, otherwise the rechargeable battery life may be shortened.
- Avoid recharging or placing the rechargeable battery near sources of heat or humidity.
- Do not peel off the plastic covering on the rechargeable battery. Short-circuiting may result which is dangerous.
- In order to derive the maximum from the battery's continuous operating time, allow it to run down completely before recharging it.
- The included rechargeable battery can be recharged about 300 times. After that, its operation time shortens and the rechargeable battery should be replaced.

Dry cell battery and rechargeable battery

- Load the new battery with their polarities (+ and -) aligned correctly.
- Do not apply heat to batteries, or internal shortcircuit may occur.
- If this unit is not to be used for a long period of time, remove the batteries and store them in a cool and dry place.
- Remove spent batteries immediately.

Listening caution



Do not play your headphones or earphones at a high volume. Hearing experts advise against continuous extended play.

If you experience a ringing in your ears, reduce volume or discontinue use. Do not use while operating a motorized vehicle. It may create a traffic hazard and is illegal in many areas.

You should use extreme caution or temporarily discontinue use in potentially hazardous situations.

Even if your headphones or earphones is an open-air type designed to let you hear outside sounds, don't turn up the volume so high that you can't hear what's around you.

Sound can be deceiving. Over time your hearing "comfort level" adapts to higher volumes of sound. So what sounds "normal" can actually be loud and harmful to your hearing.

Guard against this by setting your equipment at a safe level BEFORE your hearing adapts.

To establish a safe level:

- Start your volume control at a low setting.
- Slowly increase the sound until you can hear it comfortably and clearly, and without distortion.

Once you have established a comfortable sound level:

- Set the dial and leave it there.

To product you have purchased is powered by a nickel-cadmium battery which is recyclable. Please call 1-800-8-BATTERY for information on how to recycle this battery.



Troubleshooting Guide

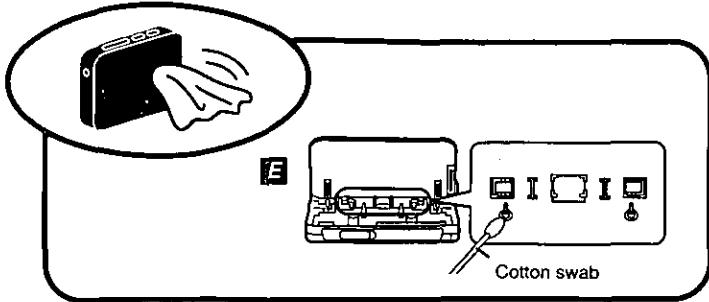
Before requesting service for this unit, check the chart below for a possible cause of the problem you are experiencing. Some simple checks or a minor adjustment on your part may eliminate the problem and restore proper operation.

If you are in doubt about some of the check points, or if the remedies indicated in the chart do not solve the problem, refer to the directory of Authorized Service Centers (enclosed with this unit) to locate a convenient service center, or consult your dealer for instructions.

For detailed instructions, contact an authorized servicenter 1-800-211-7262 or web site (<http://www.panasonic.com>).

Symptom	Checkpoint
No operation possible.	Has the HOLD mode been released?
Remote control fails to work properly.	Have the earphones and remote control plugs been connected.?
No sound is heard.	
A cracking noise is heard.	Are the plugs clean?
●No reception. ●The FM frequency range is different.	Has the frequency step been set for your area?

Maintenance



Main unit

Clean with a soft cloth. For very dirty surfaces clean with a mild dish washing liquid, then wipe with a dry cloth. Do not use alcohol or thinners to clean this unit.

Head care **E**

To ensure good sound quality for tape operation, the head and other surfaces the tape touches should occasionally be cleaned.

Clean it with a cotton swab dampened with a little isopropyl alcohol.

Product Service

Do not attempt to remove the cover(s) or repair the unit yourself. Refer servicing to qualified personnel only.

Product information

For product service, product information or assistance with product operation, refer to the servicenter directory.

User memo:

DATE OF PURCHASE _____
 DEALER NAME _____
 DEALER ADDRESS _____
 TELEPHONE NUMBER _____

The serial number of this product can be found on the label affixed to the back of the cassette compartment cover. Please note them in the space provided below and keep as a permanent record of your purchase to aid identification in the event of theft.

MODEL NUMBER _____ **RQ-SX50V** _____
 SERIAL NUMBER _____

Panasonic Consumer Electronics Company, Division of Matsushita Electric Corporation of America
 One Panasonic Way,
 Secaucus, New Jersey 07094

Panasonic Sales Company, Division of Matsushita Electric of Puerto Rico, Inc. ("PSC")
 Ave. 65 de Infanteria, Km. 9.5
 San Gabriel Industrial Park
 Carolina, Puerto Rico 00985
 Tel. (809) 750-4300
 FAX. (809) 758-2910

Panasonic Audio Products Limited Warranty

Panasonic Consumer Electronics Company or Panasonic Sales Company (collectively referred to as "The warrantor") will repair this product with new or refurbished parts, free of charge, in the U.S.A. or Puerto Rico from the date of original purchase in the event of a defect in materials or workmanship as follows:

AUDIO COMPONENTS, RADIOS, COMPACT DISC PLAYERS, VIDEO CD PLAYERS AND HOME ENTERTAINMENT SYSTEMS—For one (1) year.

ACCESSORIES, HEADPHONES AND CARTRIDGES—(when applicable) For ninety (90) days.

BATTERIES—(when applicable)—New rechargeable batteries in exchange for defective rechargeable batteries—For ten (10) days. Non-rechargeable batteries are not warranted.

RECHARGEABLE BATTERY PACKS—(when applicable)—New rechargeable battery packs in exchange for defective rechargeable battery packs for (90) days. Non-rechargeable battery packs are not warranted.

Carry-in or mail-in service in the continental U.S.A. can be obtained during the warranty period from a Panasonic Services Company (PASC) Factory Servicenter listed in the Servicenter Directory. Or call 1-800-211-7262, toll free, to locate an authorized PASC Servicenter. Carry-in or mail-in service in Puerto Rico can be obtained during the warranty period by calling the telephone numbers listed in the Servicenter Directory.

This warranty is extended only to the original purchaser. A purchase receipt or other proof of date of original purchase will be required before warranty service is rendered.

This warranty only covers failures due to defects in materials or workmanship

which occur during normal use and does not cover normal wear to the stylus (when applicable) or dealer installed cartridge or stylus. It does not cover damage which occurs in shipment or failures which are caused by products not supplied by the warrantor or failures which result from accident, misuse, abuse, neglect, mishandling, misapplication, faulty installation, set-up adjustment, improper maintenance, alteration, improper antenna, inadequate signal pick-up, maladjustment of consumer controls, modification, or commercial use of product, or service by anyone other than a PASC Factory Servicenter or authorized PASC Servicenter, or damage that is attributable to acts of God.

LIMITS AND EXCLUSIONS

There are no express warranties except as listed above.

THE WARRANTOR SHALL NOT BE LIABLE FOR INCIDENTAL OR CONSEQUENTIAL DAMAGES RESULTING FROM THE USE OF THIS PRODUCT, OR ARISING OUT OF ANY BREACH OF THIS WARRANTY, INCLUDING WITHOUT LIMITATION, DAMAGE TO TAPES RECORDS OR DISCS. ALL EXPRESS AND IMPLIED WARRANTIES INCLUDING THE WARRANTIES OF MERCHANTABILITY AND FITNESS FOR A PARTICULAR PURPOSE, ARE LIMITED TO THE APPLICABLE WARRANTY PERIOD SET FORTH ABOVE. Some states do not allow the exclusion or limitation of incidental or consequential damages, or limitations on how long an implied warranty lasts, so the above exclusions or limitations may not apply to you.

This warranty gives you specific legal rights and you may also have other rights which vary from state to state.

If a problem with this product develops during or after the warranty period, you may contact your dealer or Servicenter. If the problem is not handled to your satisfaction, then write to the Consumer Affairs Division at the company address indicated above.

If you ship the product

Carefully pack and send it prepaid, adequately insured and preferably in the original carton. Attach a postage-affixed letter, detailing the complaint, to the outside of the carton.

Do NOT send the product to the Executive or Regional Sales offices. They are NOT equipped to make repairs.

Customer's Record

Model No. _____

Dealer's Name _____

Serial No. _____
 or

Dealer's Address _____

Code No. _____

Date of Purchase _____