

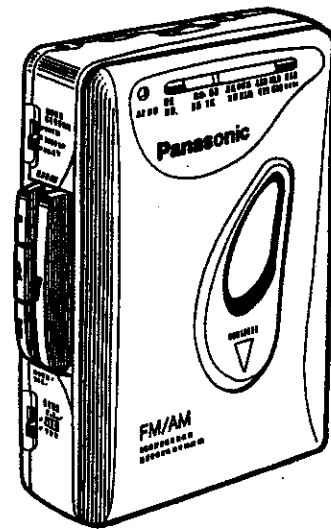
Stereo Radio Cassette Player
RQ-V60

Operating Instructions

Instrucciones de manejo

使用説明書

إرشادات التشغيل



Panasonic

Before connecting, operating or adjusting this product,
please read these instructions
completely.



G GC GN

ENGLISH

POWER SOURCE (**A** on the reverse side)

- Insert two UM-3 batteries (R6/LR6 or equivalent, not included) into the Battery Compartment, making sure of proper polarities.
- When the batteries are weak, the tape speed will slow down, the sound will become distorted, and the volume will decrease.
- For AC power operation, connect only Panasonic AC adaptor (optional) to the DC IN jack.

RADIO

1. Connect the included stereo earphones or headphones to the  Jack.
2. Set the SELECTOR Switch to "RADIO".
3. Set the BAND/FM MODE Selector to the desired radio band.
 - To receive FM stereo broadcast, set the BAND/FM MODE Selector to "FM ST".
4. Tune in the desired station using the TUNING Control.
The FM ST Indicator will light during FM stereo broadcast.
5. Adjust the volume using the VOLUME Control.
6. The radio can be turned off by setting the SELECTOR Switch to "TAPE ".

Note:

If FM stereo reception is poor (excessive noise, FM ST Indicator flickering), set the BAND/FM MODE Selector to "FM". This will reduce the noise and provide more clear reception; however, the broadcast will not be heard in stereo.

■ Antennas

FM: The stereo earphones or headphones cord serves as the FM antenna, so be sure to use it extended, not coiled.

AM: The sensitive ferrite core antenna inside the set will provide excellent AM reception in most areas. The ferrite core antenna is directional. For optimum reception, turn the set in the direction which gives the best results.

Note:

Be sure to have the set in the upright position when you listen to AM broadcasts.


■ Auto-Stop

During playback, when the tape reaches its end, the automatic stop system will release the PLAY Button.

■ Fast Forward and Rewind

The tape will move rapidly forward when the FF Button is pressed. The tape will rewind rapidly when the REW Button is pressed.

Notes:

- When the tape reaches the end, be sure to press the STOP Button.
- If the SELECTOR Switch is set to "RADIO" during tape operation, the motor will stop. It must be set to "TAPE ".
- Between functions (during play, fast forward or rewind), always press STOP first to avoid jamming the tape.


MAINTENANCE (**D** on the reverse side)

Get into habit of cleaning the head assembly (after every 10 hours or so) with a cotton swab dampened with a little alcohol.

NOTES

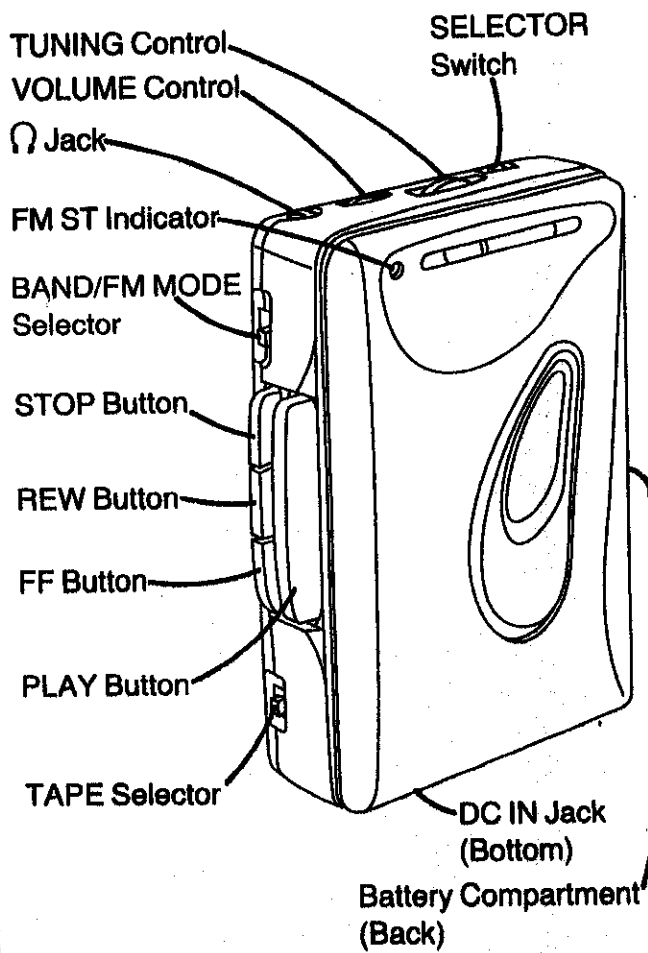
- Batteries installed with incorrect polarities may leak and damage this unit.
- Do not mix batteries (old and new) or types (carbon and alkaline).
- If the set is not used for a long period of time, or is used only from an AC power source, remove all the batteries to prevent potential damage due to possible battery leakage.
- Avoid using or placing this unit near sources of heat. Do not leave it in an automobile exposed to direct sunlight for a long period of time with the doors and windows closed, as this may deform the cabinet.
- Avoid spray-type insecticides. Some insecticides contain chemicals that could cause cabinet deformation.

TAPE PLAYBACK

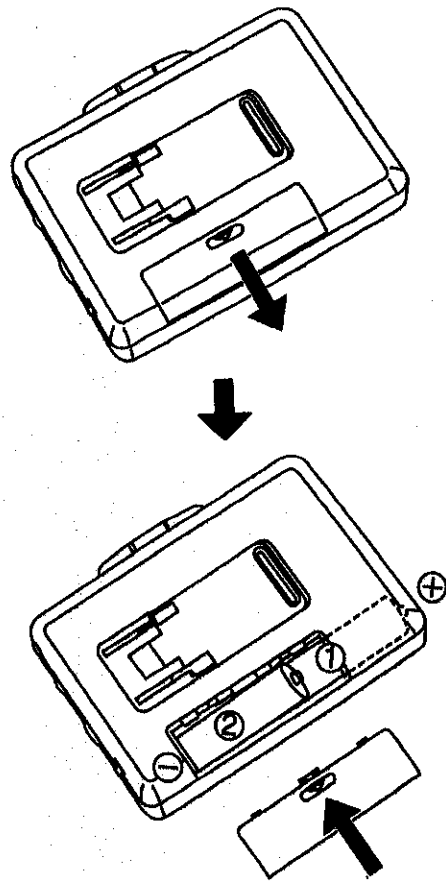
- Open the Cassette Compartment Cover and insert a cassette. (☞ **B** on the reverse side)
- Connect the included stereo earphones or headphones to the  Jack.
- Set the SELECTOR Switch to "TAPE **OFF**".
- Set the TAPE Selector according to the tape used.
CrO₂ **MTL**: Metal and chromium type
NOR: Normal type
- Press the PLAY Button and playback will begin.
- Adjust the VOLUME Control.
- To stop the playback, press the STOP Button.

Precautions for Listening with the Headphones

- Do not play your headset at a high volume. Hearing experts advise against continuous extended play.
- If you experience a ringing in your ears, reduce volume or discontinue use.
- Do not use while operating a motorized vehicle. It may create a traffic hazard and is illegal in many areas.
- You should use extreme caution or temporarily discontinue use in potentially hazardous situations.
- Even if your headset is an open-air type designed to let you hear outside sounds, don't turn up the volume so high that you can't hear what's around you.

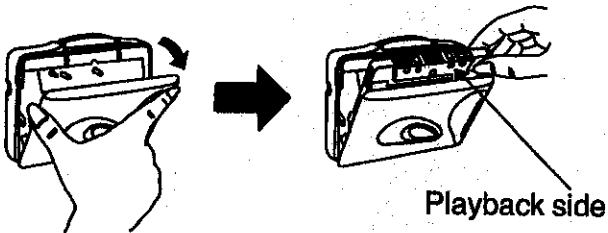


A

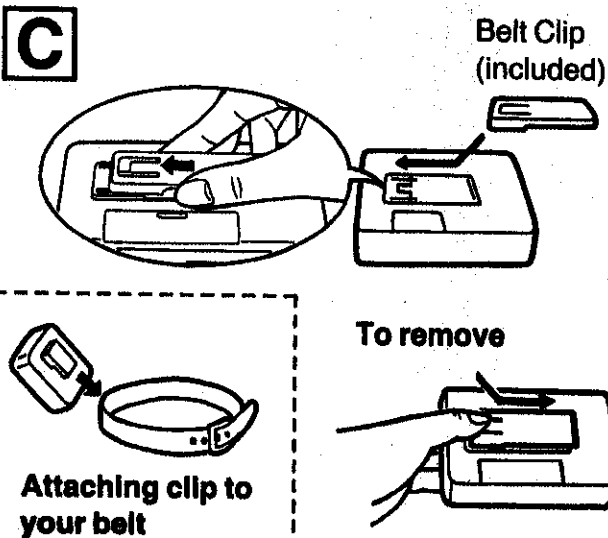


Two UM-3 Batteries (not included)

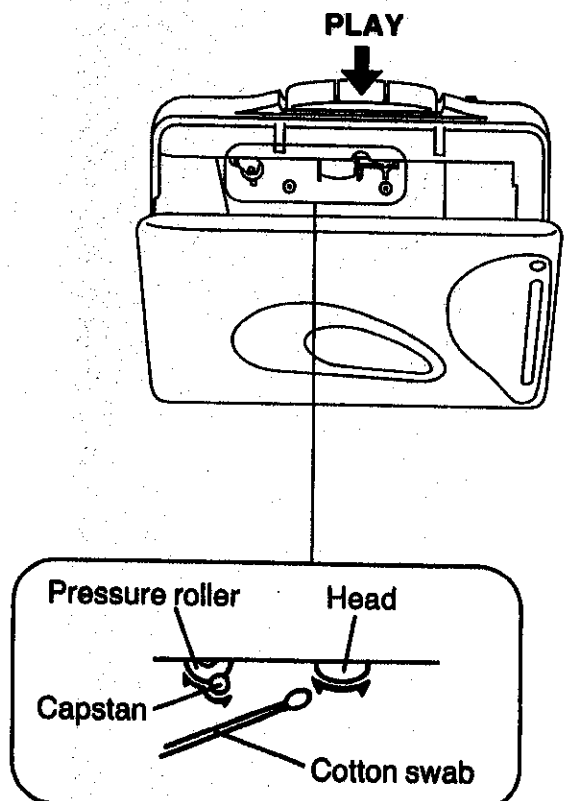
B



C



D



SPECIFICATIONS

Radio Frequency Range:	For Saudi Arabia	FM; 88–108 MHz AM; 530–1605 kHz
	For Others	FM; 87.5–108 MHz AM; 520–1610 kHz
Power Requirements:	Battery; 3 V (Two UM-3, "R6/LR6" batteries) AC; with optional AC adaptor	
Power Output:	For Australia and New Zealand	40 mW (20 mW×2)...RMS (max.)
	For Others	30 mW (15 mW×2)...RMS (max.)
Frequency Range:	60–14000 Hz (Normal, CrO ₂ /Metal)	
Jacks:		
Input;	DC IN; 3 V	
Output;	HEADPHONES	
Dimensions (W×H×D):	85.7×119.6×32.0 mm	
Weight:	151 g (without batteries)	

Note:

Specifications are subject to change without notice.

Weight and dimensions are approximate.

Matsushita Electric Industrial Co., Ltd.

Central P.O. Box 288, Osaka 530-91, Japan

RQTT0057-G

F1293m0