

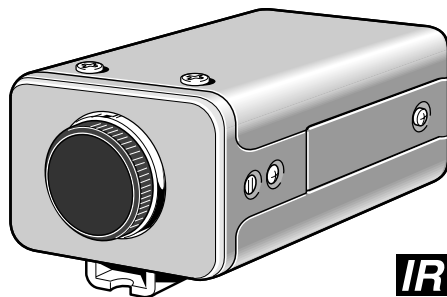
# SANYO

## VCB-3572IRP

### INSTRUCTION MANUAL BEDIENUNGSANLEITUNG MANUEL D'INSTRUCTIONS

使用说明书

**B/W CCD Camera**  
**CCD-Schwarzweißkamera**  
**Caméra CCD Noir et Blanc**  
黑白色CCD摄像机



**IR**

#### **About this manual**

Before installing and using the camera, please read this manual carefully. Be sure to keep it handy for later reference.

#### **Über diese Bedienungsanleitung**

Lesen Sie bitte vor der Montage und dem Inbetriebnehmen der Kamera zuerst diese Bedienungsanleitung sorgfältig durch und bewahren Sie sie zum späteren Nachschlagen auf.

#### **A propos de ce manuel**

Avant d'installer et d'utiliser la caméra, veuillez lire ce manuel attentivement. Gardez-le à portée de main pour toute référence ultérieure.

#### **关于本说明书**

在安装和使用摄像机之前，请仔细阅读本使用说明书，并务必保存好本使用说明书，以备今后查阅。

# CONTENTS

---

PRECAUTIONS .....	2
PARTS NAMES .....	3
CONCERNING AUTO-IRIS LENSES .....	5
MOUNTING THE LENS .....	6
CONNECTIONS .....	8
SETTINGS .....	9
TROUBLESHOOTING .....	11
SPECIFICATIONS .....	12
ACCESSORIES .....	13

Depending on the conditions of use, installation and environment, please be sure to make the appropriate settings and adjustments. If you need help with installation and/or settings, please consult your dealer.

# FEATURES

---

- Infrared signals immediate area sensitivity is improved by about 10 dB from previous models.
- Built-in interline transfer method 1/2" CCD, approx. 470,000 picture elements
- Low smear, anti-blooming, low lag, no burning and no geometric distortion using the CCD solid state image device.
- 100% solid state components giving excellent immunity to shock and vibration
- Not subject to interference from magnetic or electrostatic fields
- High sensitivity, minimum required illumination of 0,02 lux with F1.2 lens
- Horizontal resolution, more than 560 TV lines
- New backlight compensation function (Active when using an auto-iris lens)
- Externally adjustable flange back (mechanical focus)
- Low power consumption and quick start
- 12 V DC operation

# PRECAUTIONS

---

## ■ In case of problem

Do not use the camera if smoke or a strange odour comes from the unit, or if it seems not to function correctly. Disconnect the power cord immediately, and consult your dealer (or a Sanyo Authorized Service Centre).

## ■ Do not open or modify

Do not open the cabinet, as it may be dangerous and cause damage to the unit. For internal settings and repairs, consult your dealer (or a Sanyo Authorized Service Centre).

## ■ Do not put objects inside the unit

Make sure that no metal objects or flammable substance get inside the camera. If used with a foreign object inside, it could cause a fire, short-circuits or damages.

If water or a liquid gets inside the camera, disconnect the power cord immediately, and consult your dealer (or a Sanyo Authorized Service Centre). Be careful to protect the camera from rain, sea water, etc.

## ■ Be careful when handling the unit

To prevent damages, do not drop the camera or subject it to strong shock or vibration.

## ■ Install away from electric or magnetic fields

If installed close to a TV, radio transmitter, magnet, electric motor, transformer, audio speakers the magnetic field they generate will distort the image.

## ■ Protect from humidity and dust

To prevent damages to the camera, do not install it where there is greasy smoke or steam, where the dampness may get too high, or where there is a lot of dust.

## ■ Protect from high temperatures

Do not install close to stoves, or other heat generating devices, such as spotlights, etc., or where it could be subject to direct sunlight, as that could cause deformation, discoloration or other damages.

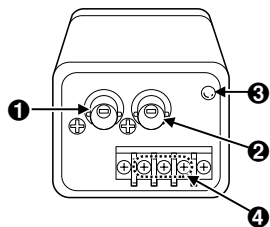
Be careful when installing close to the ceiling, in a kitchen or boiler room, as the temperature may raise to high levels.

Install where the temperature range will stay between  $-10^{\circ}\text{C}$  and  $50^{\circ}\text{C}$ . (no condensation)

## ■ Cleaning

- Dirt can be removed from the cabinet by wiping it with a soft cloth. To remove stains, wipe with a soft cloth moistened with a soft detergent solution and wrung dry, then wipe dry with dry soft cloth.
- Do not use benzine, thinner or other chemical product on the cabinet, as that may cause deformation and paint peeling. Before using a chemical cloth, make sure to read all accompanying instructions. Make sure that no plastic or rubber material comes in contact with the cabinet for a long period of time, as that may cause damage or paint peeling.

# PARTS NAMES



## ❶ Video output connector (VIDEO OUT: BNC type)

Connect this connector to a device such as a VCR or monitor with a **VIDEO IN** connector.

## ❷ External sync composite video signal input connector (VS IN: BNC type)

Connect to this connector the synchronizing signal output from a synchronizing signal device or the composite signal of a video distributor.

## ❸ Power indicator (POWER)

Comes on when the power to the camera is on.

## ❹ 12 V DC input terminal (12 V DC, NC)

Connect DC connecting cord from the AC adaptor to the **12V DC** input terminal on the camera. Then, plug the AC adaptor into an AC outlet.

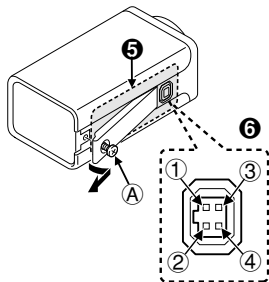
## ❺ Camera setup section (under the cover)

These settings are for when using a 1/2 inch CS mount **DC** (without **EE** internal amplifier) type lens. However, if due to installation conditions or environment the settings may need to be modified for best results (see "**SETTINGS**").

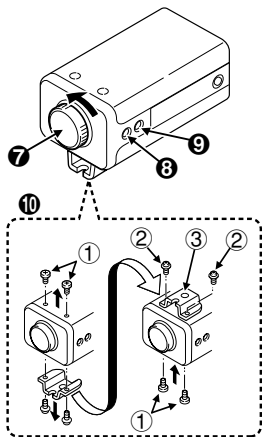
To access the controls, loosen the cover fixing screw **Ⓐ**, then remove the cover.

## ❻ Lens iris output connector (LENS)

This 4-pin connector is used to send the DC control signal and power supply to an auto-iris type lens.



# PARTS NAMES



## 7 Lens mount cap

The cap is installed to protect the lens mount section.

Remove the lens mount cap before installing a lens (sold separately).

## 8 Flange-back adjustment screw (FLANGE BACK ADJ.)

## 9 Flange-back lock screw (FLANGE BACK LOCK)

## 10 Camera installation bracket

The bracket can be fixed at the top or bottom of the camera. When fixing the bracket, be sure to use the longer screws and install the shorter screws on the opposite side to seal the openings.

① Shorter screws: M3 x 4

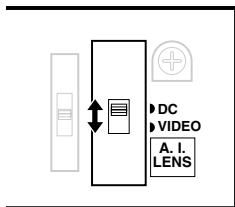
② Longer screws: M3 x 6

③ Camera mounting screw hole: 1/4"-20 UNC

### CAUTION:

When installing the camera support, select a location that can support the total weight of the camera and accessories.

# CONCERNING AUTO-IRIS LENSES



## DC type auto-iris lens

A lens without amplifier circuit that operates only on a DC power source. In general, this type of lens is referred to as DC type coil lens or DC type non-amplifier lens.

(Set the **A.I. LENS** switch to the **DC** position.)

## VIDEO type auto-iris lens

A lens with amplifier circuit that operates on video signal and DC power source. In general, this type of lens is referred to as EE amplifier type lens.

ALC and LEVEL volume level controls are available on the lens for iris adjustments.

(Set the **A.I. LENS** switch to the **VIDEO** position.)

### ■ Compatible auto-iris lenses

1/2 inch Sanyo DC type lens	1/2 or 2/3 inch VIDEO type lens
VCL-CS12GY: Standard angle, $f=12$ mm	Semi-wide angle, $f=9$ mm
VCL-CS6GY: Wide angle, $f=6$ mm	Standard angle, $f=12$ mm
VCL-CS3GY: Ultra-wide angle, $f=3.7$ mm	Telephoto angle, $f=16$ mm

### ■ If using a VIDEO type auto-iris lens

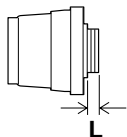
- Set the **ALC** and **LEVEL** controls on the lens to adjust the iris. Normally the **ALC** volume should be turned all the way to **Av** (Average).
- Depending on the type of lens used, the lens may not perform properly. In such a case, adjust the **LEVEL** volume on the lens casing to correct.

# MOUNTING THE LENS

Please use a DC type auto-iris lens (sold separately).

## Checking the lens mount

Do not use a lens if length "L" is more than 7 mm. If not, that may damage the camera and prevent proper installation.



1 Remove the lens mount cap from the camera.

2 Install the auto-iris lens.

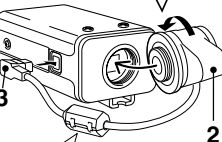
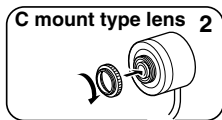
### CS mount type lens

Carefully align the lens mount with the camera opening, then turn the lens slowly to install it.

### C mount type lens

To allow for flange-back adjustment, install the supplied **C-mount adaptor** on the lens mount, then carefully align the lens mount with the camera opening and turn the lens slowly to install it.

3 Connect the lens plug to the lens iris output connector (LENS) on the side of the camera. When using lenses from other makers, the plug shape may not correspond to the terminal on the camera. In such a case, remove the original plug and using a soldering iron, connect the supplied **lens iris plug** according to the diagram. (Refer to page 7.)

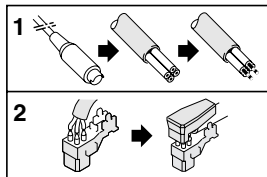


## CAUTION:

When using an auto-iris lens, the supplied clamping core (B) must be installed on the lens wire, in order to prevent electromagnetic interference to the other devices connected.



# MOUNTING THE LENS



## ■ Rewiring the lens cable in the lens iris plug

### 1 Prepare the lens cable.

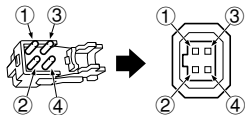
Cut the cable at the plug, then remove approx. 8 mm of the cable sheath and strip about 2 mm from each wire.

### 2 Install the lens iris plug.

Solder the cable to the pins following the correct pin layout (refer to the table and illustrations), then close the plug cover.

### Pin layout

	DC type lenses	VIDEO type lenses
①	Brake coil (-)	+12 V DC (50 mA max.)
②	Brake coil (+)	Not used
③	Drive coil (+)	Video output (1.0 Vp-p, high impedance)
④	Drive coil (-)	Ground (for video signal and DC power)



## ■ Flange-back adjustment

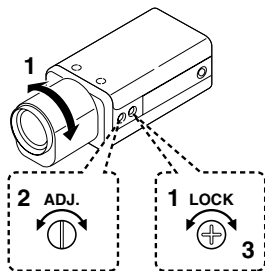
If the pick-up surface is not correctly positioned with relation to the lens focal point, the picture will be out of focus (in particular when using auto-iris power zoom lenses, sold separately). If that is the case, adjust the flange-back position as described below.

### 1 Using a + screwdriver, loosen the **FLANGE BACK LOCK** screw (M2:+).

Set the zoom lens to the maximum telephoto position, set the focus using the focus ring on the lens.

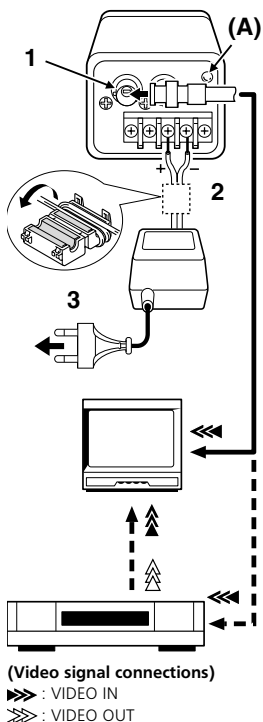
### 2 Set the zoom lens to the maximum wide angle position, set the focus using the **FLANGE BACK ADJ.** screw.

### 3 Repeat steps 2 and 3, until the image stays in focus when changing from a telephoto shot to a wide angle shot. When the setting is complete, tighten the **FLANGE BACK LOCK** screw.





# CONNECTIONS



## Basic connection for monitoring or recording

The peripheral devices (VCR, monitor, lens, etc.) and cables are sold separately.

- 1 Make the video signal connection between the camera and the monitor or time lapse VCR.
- 2 Connect DC connecting cord from the AC adaptor to the **12 V DC** input terminal on the camera.
  - When using this unit, the supplied clamping core (A) must be installed on the power cord, in order to prevent electromagnetic interference to the other devices connected.

### WARNING:

- This AC adaptor is specially conceived for this camera. Never use another type of AC adaptor with this camera, and do not use this AC adaptor to power other types of cameras.
- Not for use with toys.
- Never try to disassemble or modify the AC adaptor.

- 3 Insert the plug of this power cord into a wall outlet.  
The **POWER** indicator (A) will light. Adjust the picture on the monitor using the Brightness and Contrast controls.

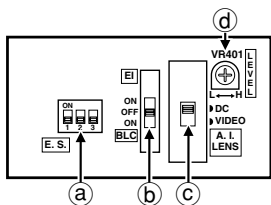
### ■ Coaxial cable type and maximum length

- Cable type RG-59U (3C-2V), 250 m maximum.
- Cable type RG-6U (5C-2V), 500 m maximum.
- Cable type RG-11U (7C-2V), 600 m maximum.

### CAUTION:

- The RG-59U type cable should not be run through electrical conduits or through the air.
- Using CCTV/Video-grade coaxial cable.

# SETTINGS



	Control name	Position
a	High speed electronic shutter switches (E.S.)	All OFF: 1/50 sec
b	Electronic iris (EI)/Backlight compensation (BLC) switch	OFF
c	Auto-iris lens switch (A.I. LENS) Refer to page 5	DC
d	Lens iris level volume (LEVEL)	about centre

## High speed electronic shutter setting

Normally, the speed setting switches for the high speed electronic shutter are all set to the **OFF** position. This sets the electronic shutter speed to 1/50 sec. The switches can be set as indicated in table **A** to select one of the **8** speeds available.

### CAUTION:

- When using the high speed electronic shutter, the **EI/BLC** switch must be set to the **OFF** position.
- Using the high speed electronic shutter indoors with low lighting, will give darker pictures. In such a case, add some lights to make sure the lighting is sufficient. If the lighting is very bright, pay attention to the light angle in order to avoid or minimize the smear phenomenon effect.

Table A

①	②	③	④	⑤	⑥	⑦	⑧
1/50	1/120	1/250	1/500	1/1000	1/2000	1/4000	1/10000

(Unit: sec.)

# SETTINGS

## ■ Electronic iris function setting

Use a manual or fixed iris lens and set the lens aperture to the shortest F stop. Set the **EI/BLC** switch to **EI-ON** position.

### Note:

Please refer to the specifications for dynamic range of the electronic iris.

### CAUTION:

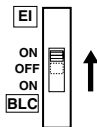
- The electronic iris is suitable for normal indoor use. When the **EI/BLC** switch is set to the **EI-ON** position, do not use an auto-iris lens.
- If used under fluorescent light, the image may flicker. In such a case, change to incandescent lighting or set the **EI/BLC** switch to the **OFF** position and use an auto-iris lens.
- When shooting bright subjects, pay attention to the light angle in order to avoid or minimize the smear phenomenon effect.

### When using an auto-iris lens (for indoor/outdoor use)

Set the **EI/BLC** switch to the **OFF** position.

### CAUTION:

If conditions are outside the electronic iris operation range or more than the maximum illumination, it will cause saturation of the CCD. In that case, use a manual iris lens.



## ■ Lens iris adjustment

If using a DC type auto-iris lens, you will need to set the **LEVEL** (VR401) volume when shooting in the conditions described below.

**L (counterclockwise):** To decrease the contrast

**H (clockwise):** To increase the contrast

- If shooting simultaneously in a dark room and through a bright window.
- If the subject background is extremely bright or dark.
- If the brightness of the picture on the monitor is not correct.



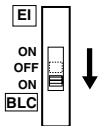
# SETTINGS

---

## ■ Backlight compensation setting

Use an auto-iris lens and set the **EI/BLC** switch to the **BLC-ON** position, to engage the backlight compensation function.

Use an auto-iris lens. Set the **EI/BLC** switch to the **BLC-ON** position.



### If using a VIDEO type auto-iris lens

- The **ALC** volume on the lens should be turned all the way to **Av** (Average).
- If the backlight compensation function does not compensate properly for the conditions, set using the **LEVEL** volume on the lens.

### CAUTION:

The electronic iris function and the backlight compensation function cannot operate simultaneously.

# TROUBLESHOOTING

---

Before taking the camera for repairs, please check below to make sure that the camera is used correctly. If it still does not perform correctly, please consult your dealer or a Sanyo Authorized Service Centre.

## ■ No picture on the monitor screen

- Is the power turned on to all connected devices? Is the voltage correct?
- Are all the signal connecting cables correctly connected?
- Is the lighting sufficient?
- Has the lens cap been removed?
- Is the lens type (**DC** or **VIDEO**) correctly selected?

Depending on the type of lens, the **A. I. LENS** switch must be set accordingly.

- Is the iris control correctly set?

**A:** When using a **DC** type lens, the **LEVEL** volume (inside the camera casing) should be adjusted.

**B:** When using a **VIDEO** type lens, the **LEVEL** volume (on the lens) should be adjusted.

## ■ The picture is not clear

- Is the monitor correctly adjusted?
- Is the flange-back position correctly set?
- Is the lens focus correctly adjusted?
- Are the lens surfaces clean?

If there is dust or finger prints on the lens, the image quality will deteriorate. To clean the lens use a soft cloth or a commercially available lens cleaning set.

# SPECIFICATIONS

---

## ■ Camera

<b>Scanning system</b>	: CCIR standard (625 TV lines, 25 frames/sec.)
<b>Interlace</b>	: PLL 2:1 interlace
<b>Image device</b>	: 1/2 inch solid state image device CCD
<b>Picture elements</b>	: 795 (H) x 596 (V)
<b>Effective picture elements</b>	: 752 (H) x 582 (V)
<b>Synchronizing system</b>	: External sync (Automatic switching)
<b>Resolution</b>	: 560 TV lines horizontally, 350 TV lines vertically
<b>Video output level</b>	: 1.0 Vp-p/75 ohms, composite
<b>Video S/N ratio</b>	: More than 50 dB
<b>Minimum required illumination (incandescent lighting)</b>	: Approx. 0.02 lux with a F 1.2 lens, approx. 0.03 lux with a F 1.4 lens
<b>Backlight compensation</b>	: Manual ON/OFF switching, zone light measuring system (Active when using an auto-iris lens)
<b>Electronic iris function</b>	: Manual ON/OFF switching
<b>Electronic shutter</b>	: 8 speeds, selectable by switches: (1/50, 1/120, 1/250, 1/500, 1/1000, 1/2000, 1/4000, 1/10000 sec.)
<b>Electronic iris range</b>	: 0.02 lux to 10,000 lux (F 1.2, lens) 0.03 lux to 15,000 lux (F 1.4, lens)
<b>Flange-back</b>	: 12.5 mm $\pm$ 0.8 mm
<b>Gamma correction</b>	: $\gamma = 0.45$
<b>Lens mount</b>	: CS mount (or C mount with the supplied adaptor)
<b>Environmental conditions</b>	: Temperature: $-10^{\circ}\text{C} \sim +50^{\circ}\text{C}$ Humidity: less than 90% (no condensation)

<b>Power supply</b>	: 12 V DC/150 mA (without auto iris lens) 12 V DC/200 mA (with auto iris lens)
<b>Weight</b>	: Approx. 330 g (without lens)

## ■ AC Adaptor:

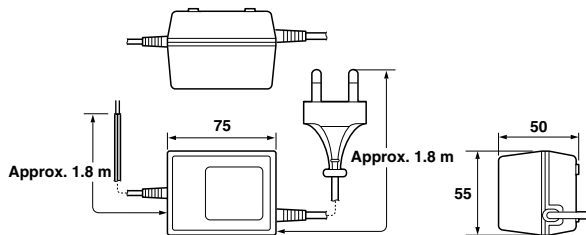
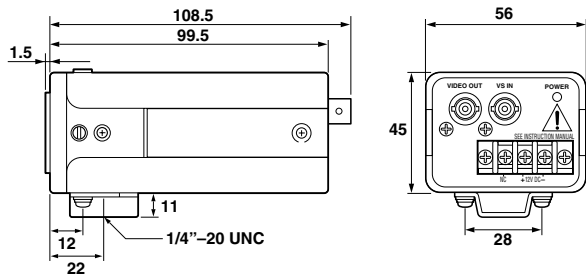
<b>Environmental conditions</b>	: Temperature: $-10^{\circ}\text{C} \sim +50^{\circ}\text{C}$ Humidity: less than 90%
<b>Power requirement</b>	: 220 – 230 V AC 50Hz
<b>Power consumption</b>	: 3.3 W (with camera head) 4.2 W (with camera head, auto iris lens)
<b>Weight</b>	: Approx. 440 g

## SERVICE

This camera is a precision instruments and if treated with care, will provide years of satisfactory performance. However, in the event of a problem, the owner is advised not to attempt to make repairs or open the cabinet. Servicing should always be referred to your dealer or Sanyo Authorized Service Centre.

# SPECIFICATIONS

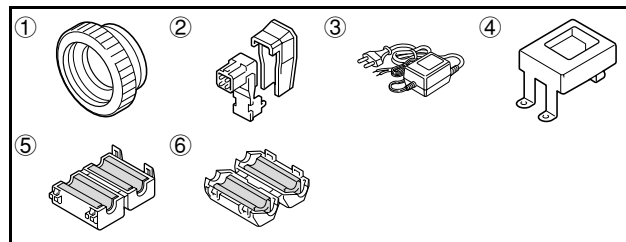
## ■ Dimensions: mm



Features and specifications are subject to change without prior notice or obligations.

# ACCESSORIES

- ① C mount adaptor (5 mm).....1 pc.  
The C mount adaptor must be used to be able to install a C mount lens on the camera.
- ② Lens iris plug (4-pin).....1 pc.
- ③ AC adaptor .....1 pc.
- ④ AC adaptor mounting plate .....1 pc.  
:With 3 fixing screws
- ⑤ Clamping core A .....1 pc.
- ⑥ Clamping core B .....1 pc.



1AC6P1P1978--  
L72H2/XE2(0399NI)

**SANYO**

---

**SANYO Electric Co, Ltd**  
Printed in Japan